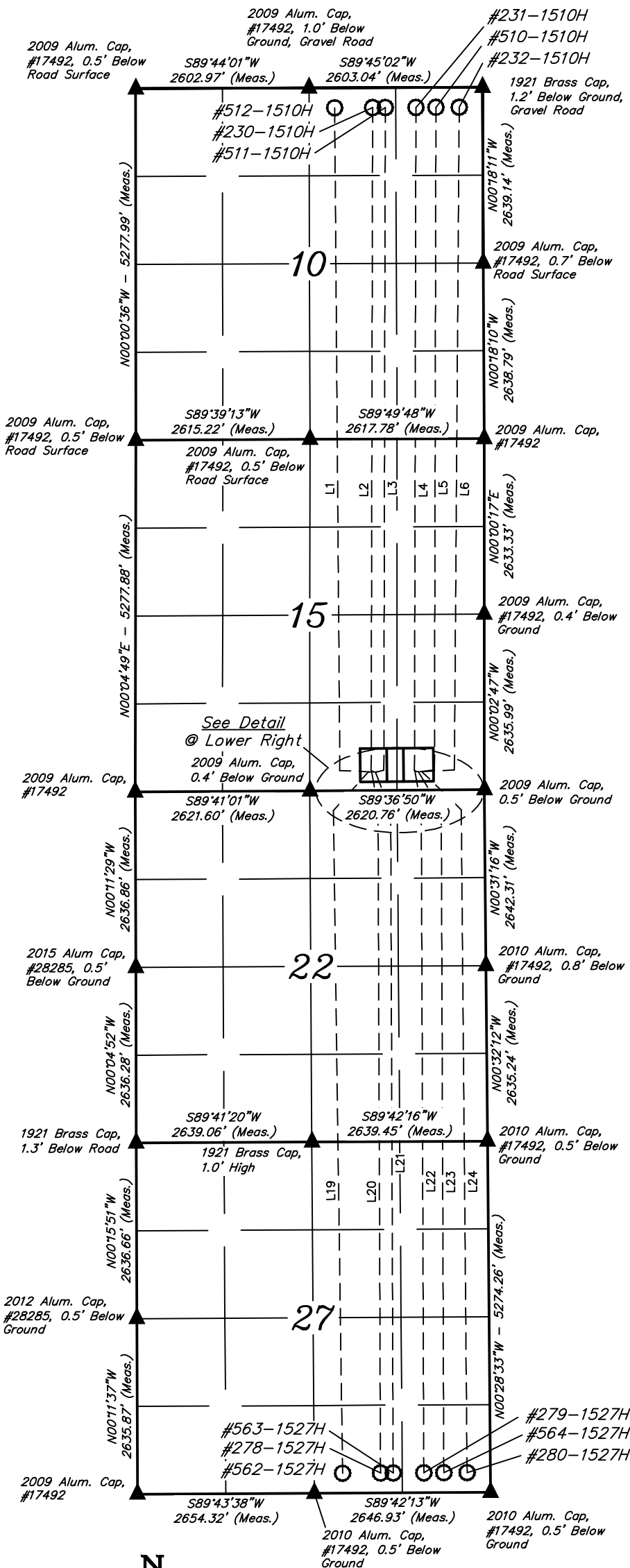


LEGEND:

- ◇ = HEEL.
- = TARGET BOTTOM HOLE.
- ▲ = SECTION CORNERS LOCATED.

T11N, R63W, 6th P.M.

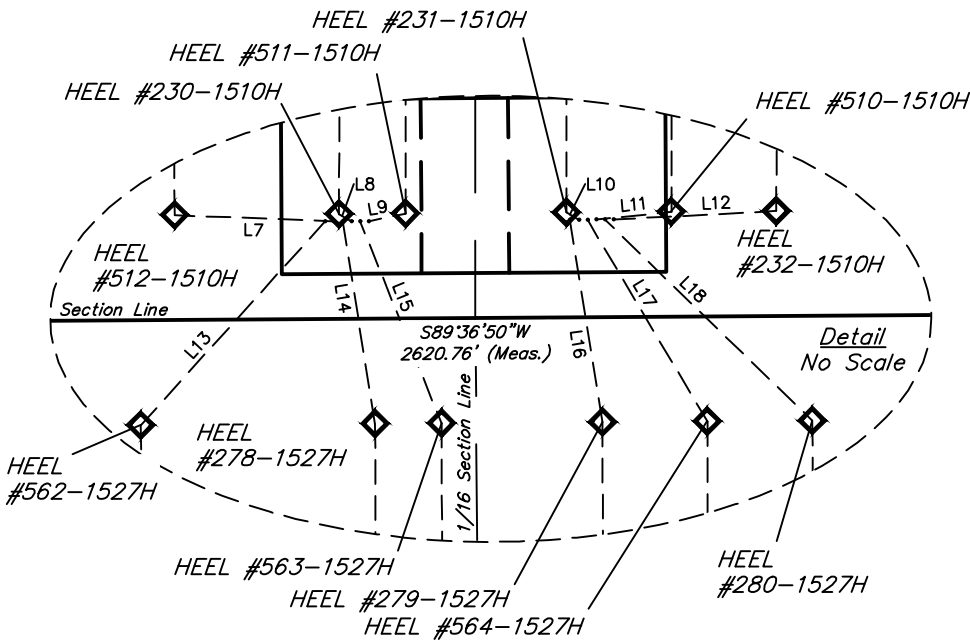


WELL	SHL FOOTAGES	SECTION	TOWNSHIP	RANGE
#232-1510H	279' FSL 915' FEL	15	11N	63W
#280-1527H	279' FSL 940' FEL	15	11N	63W
#510-1510H	279' FSL 965' FEL	15	11N	63W
#564-1527H	279' FSL 990' FEL	15	11N	63W
#231-1510H	279' FSL 1015' FEL	15	11N	63W
#279-1527H	279' FSL 1040' FEL	15	11N	63W
#511-1510H	279' FSL 1615' FEL	15	11N	63W
#563-1527H	279' FSL 1640' FEL	15	11N	63W
#230-1510H	279' FSL 1665' FEL	15	11N	63W
#278-1527H	279' FSL 1690' FEL	15	11N	63W
#512-1510H	279' FSL 1715' FEL	15	11N	63W
#562-1527H	279' FSL 1740' FEL	15	11N	63W

WELL	HEEL FOOTAGES	SECTION	TOWNSHIP	RANGE
#232-1510H	300' FSL 450' FEL	15	11N	63W
#280-1527H	300' FNL 350' FEL	22	11N	63W
#510-1510H	300' FSL 750' FEL	15	11N	63W
#564-1527H	300' FNL 650' FEL	22	11N	63W
#231-1510H	300' FSL 1050' FEL	15	11N	63W
#279-1527H	300' FNL 950' FEL	22	11N	63W
#511-1510H	300' FSL 1510' FEL	15	11N	63W
#563-1527H	300' FNL 1410' FEL	22	11N	63W
#230-1510H	300' FSL 1700' FEL	15	11N	63W
#278-1527H	300' FNL 1600' FEL	22	11N	63W
#512-1510H	300' FSL 2170' FEL	15	11N	63W
#562-1527H	300' FNL 2270' FEL	22	11N	63W

WELL	BHL FOOTAGES	SECTION	TOWNSHIP	RANGE
#232-1510H	300' FNL 350' FEL	10	11N	63W
#280-1527H	300' FSL 350' FEL	27	11N	63W
#510-1510H	300' FNL 700' FEL	10	11N	63W
#564-1527H	300' FSL 700' FEL	27	11N	63W
#231-1510H	300' FNL 1000' FEL	10	11N	63W
#279-1527H	300' FSL 1000' FEL	27	11N	63W
#511-1510H	300' FNL 1460' FEL	10	11N	63W
#563-1527H	300' FSL 1460' FEL	27	11N	63W
#230-1510H	300' FNL 1650' FEL	10	11N	63W
#278-1527H	300' FSL 1650' FEL	27	11N	63W
#512-1510H	300' FNL 2220' FEL	10	11N	63W
#562-1527H	300' FSL 2220' FEL	27	11N	63W

LINE TABLE			LINE TABLE		
LINE	DIRECTION	LENGTH	LINE	DIRECTION	LENGTH
L1	N00°26'56"W	9952.43'	L13	S42°08'29"W	785.71'
L2	N00°07'36"E	9951.46'	L14	S09°06'59"E	585.81'
L3	N00°07'36"E	9951.01'	L15	S21°56'50"E	622.42'
L4	N00°07'36"E	9949.91'	L16	S09°06'49"E	585.55'
L5	N00°07'36"E	9949.20'	L17	S30°43'52"E	670.71'
L6	N00°24'53"E	9948.93'	L18	S45°52'34"E	825.85'
L7	N87°45'08"W	455.52'	L19	S00°47'26"E	9948.56'
L8	N59°33'12"W	40.99'	L20	S00°12'53"E	9949.25'
L9	N78°16'28"E	107.00'	L21	S00°12'53"E	9949.55'
L10	N59°18'44"W	40.88'	L22	S00°12'53"E	9950.39'
L11	N84°00'34"E	215.93'	L23	S00°12'53"E	9950.86'
L12	N87°02'06"E	465.44'	L24	S00°30'09"E	9951.26'



REV: 3 02-24-17 T.B. (HEEL CHANGES)

FIFTH CREEK ENERGY COMPANY, LLC

CRITTER CREEK 15 SE
S 1/2 SE 1/4, SECTION 15, T11N, R63W, 6th P.M.
WELD COUNTY, COLORADO

SURVEYED BY	GREG WEIMER, N.P.	01-20-17	SCALE
DRAWN BY	T.B.	04-02-15	1" = 2000'
MULTI-WELL PLAN		FIGURE #5	



UELS, LLC
Corporate Office * 85 South 200 East
Vernal, UT 84078 * (435) 789-1017