

PHOTO: VIEW FROM CORNER #3 TO LOCATION STAKES

CAMERA ANGLE: NORTHERLY

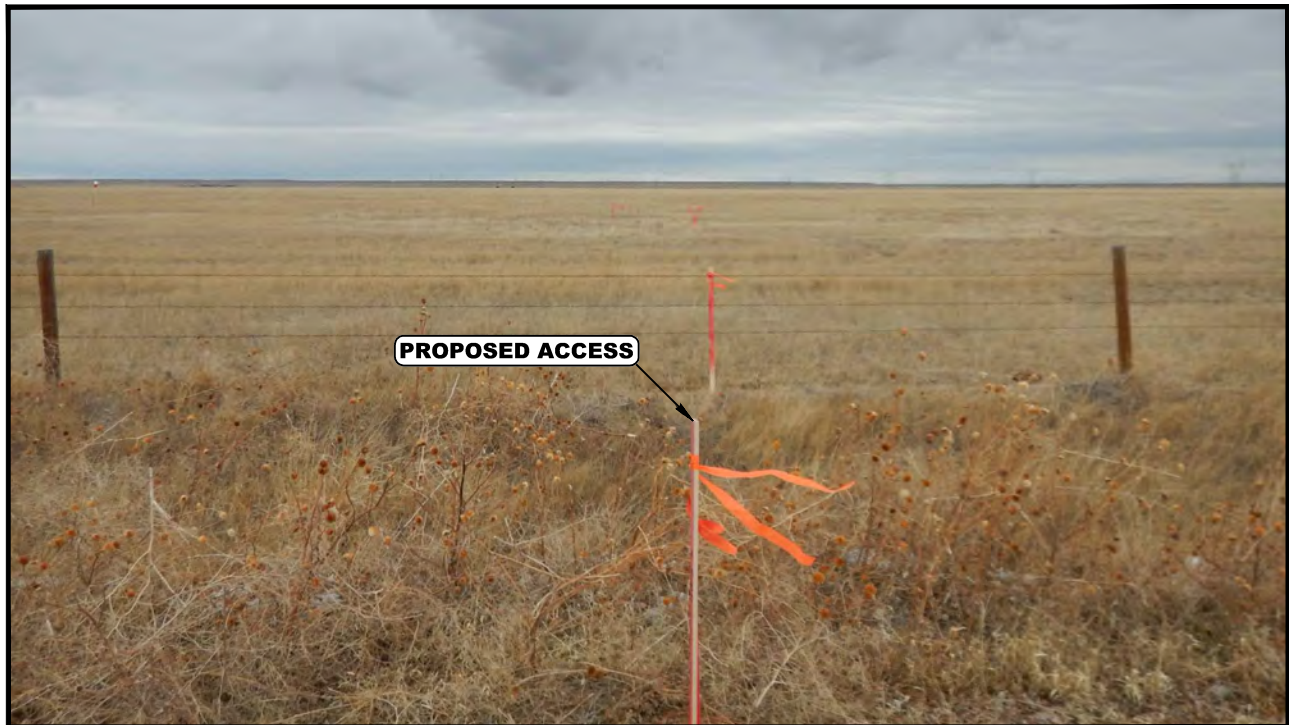


PHOTO: VIEW FROM BEGINNING OF PROPOSED ACCESS

CAMERA ANGLE: NORTHERLY

REV: 2 01-30-17 T.I. (PAD CHANGE & ADD WELLS)

## FIFTH CREEK ENERGY COMPANY, LLC

CRITTER CREEK 15 SE  
S 1/2 SE 1/4, SECTION 15, T11N, R63W, 6th P.M.  
WELD COUNTY, COLORADO



UELS, LLC  
Corporate Office \* 85 South 200 East  
Vernal, UT 84078 \* (435) 789-1017

TAKEN BY	G.W., N.P.	01-20-17	
DRAWN BY	R.C.	04-01-15	
LOCATION PHOTOS			PHOTO 1



PHOTO: VIEW OF LOCATION STAKES

CAMERA ANGLE: NORTHERLY



PHOTO: VIEW OF LOCATION STAKES

CAMERA ANGLE: EASTERLY

REV: 2 01-30-17 T.I. (PAD CHANGE & ADD WELLS)

## FIFTH CREEK ENERGY COMPANY, LLC

CRITTER CREEK 15 SE  
S 1/2 SE 1/4, SECTION 15, T11N, R63W, 6th P.M.  
WELD COUNTY, COLORADO



UELS, LLC  
Corporate Office \* 85 South 200 East  
Vernal, UT 84078 \* (435) 789-1017

TAKEN BY	G.W., N.P.	01-20-17	
DRAWN BY	R.C.	04-01-15	
LOCATION PHOTOS			PHOTO 2





PHOTO: VIEW OF LOCATION STAKES

CAMERA ANGLE: SOUTHERLY

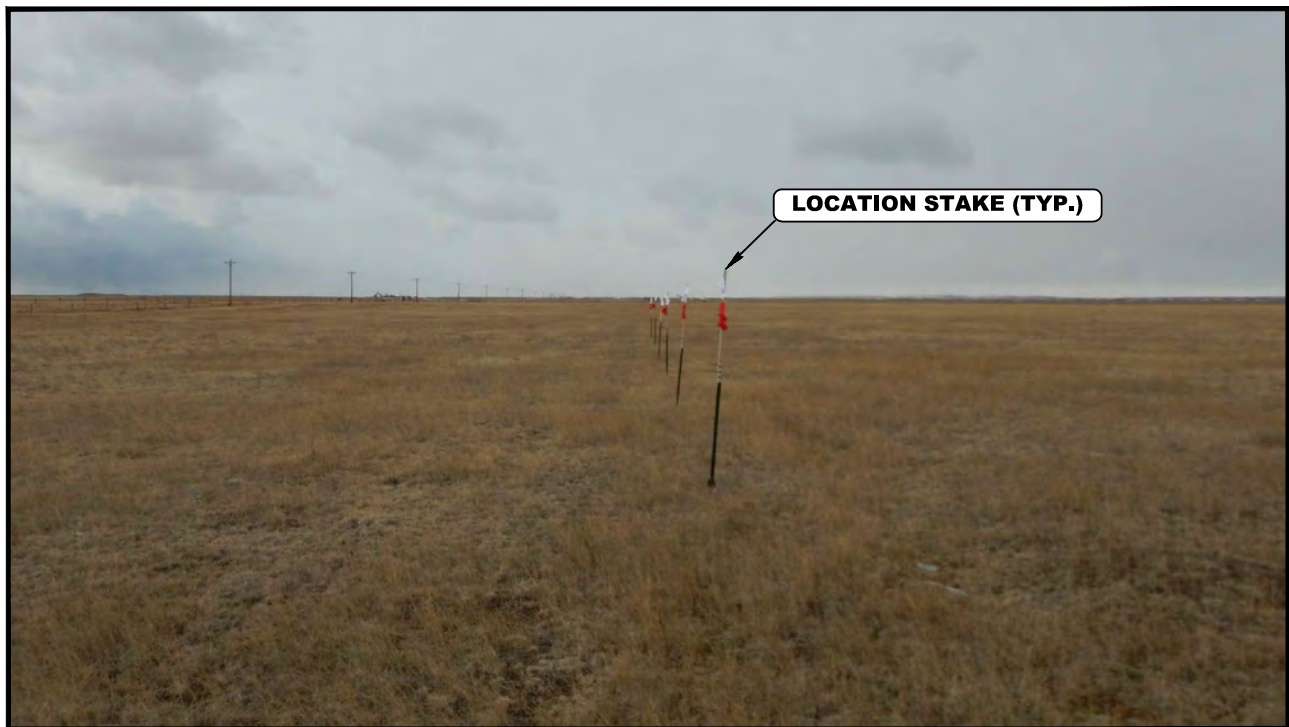


PHOTO: VIEW OF LOCATION STAKES

CAMERA ANGLE: WESTERLY

REV: 2 01-30-17 T.I. (PAD CHANGE & ADD WELLS)

## FIFTH CREEK ENERGY COMPANY, LLC

CRITTER CREEK 15 SE  
S 1/2 SE 1/4, SECTION 15, T11N, R63W, 6th P.M.  
WELD COUNTY, COLORADO



UELS, LLC  
Corporate Office \* 85 South 200 East  
Vernal, UT 84078 \* (435) 789-1017

TAKEN BY	G.W., N.P.	01-20-17	
DRAWN BY	R.C.	04-01-15	
LOCATION PHOTOS			PHOTO 3

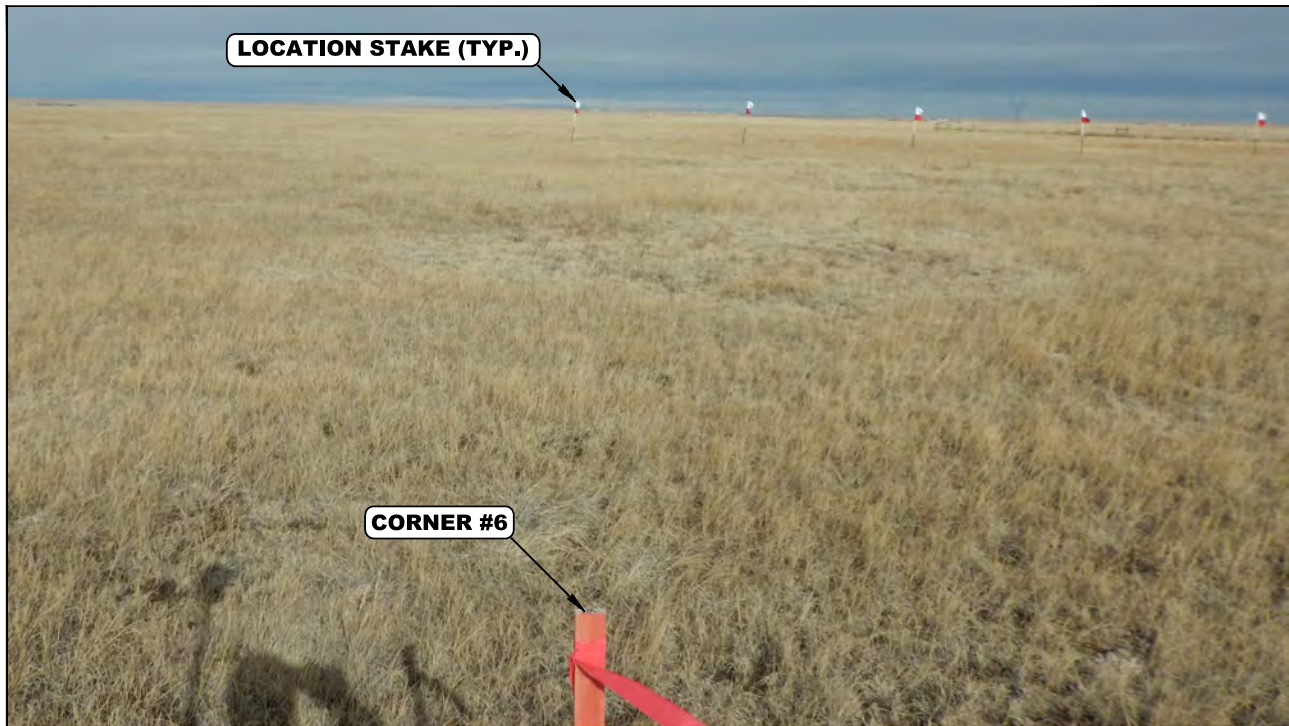


PHOTO: VIEW FROM CORNER #6 TO LOCATION STAKES

CAMERA ANGLE: NORTHERLY



PHOTO: VIEW FROM BEGINNING OF PROPOSED ACCESS

CAMERA ANGLE: WESTERLY

## **FIFTH CREEK ENERGY COMPANY, LLC**

**CRITTER CREEK 15 SE  
S 1/2 SE 1/4, SECTION 15, T11N, R63W, 6th P.M.  
WELD COUNTY, COLORADO**



**UELS, LLC**  
Corporate Office \* 85 South 200 East  
Vernal, UT 84078 \* (435) 789-1017

SURVEYED BY	G.W., N.P.	01-20-17	
DRAWN BY	T.L.	01-30-17	
<b>LOCATION PHOTOS</b>			<b>PHOTO 4</b>





PHOTO: VIEW OF LOCATION STAKES

CAMERA ANGLE: NORTHERLY



PHOTO: VIEW OF LOCATION STAKES

CAMERA ANGLE: EASTERLY

## **FIFTH CREEK ENERGY COMPANY, LLC**

**CRITTER CREEK 15 SE  
S 1/2 SE 1/4, SECTION 15, T11N, R63W, 6th P.M.  
WELD COUNTY, COLORADO**



**UELS, LLC**  
Corporate Office \* 85 South 200 East  
Vernal, UT 84078 \* (435) 789-1017

SURVEYED BY	G.W., N.P.	01-20-17	
DRAWN BY	T.L.	01-30-17	
<b>LOCATION PHOTOS</b>			<b>PHOTO 5</b>



PHOTO: VIEW OF LOCATION STAKES

CAMERA ANGLE: SOUTHERLY



PHOTO: VIEW OF LOCATION STAKES

CAMERA ANGLE: WESTERLY

## FIFTH CREEK ENERGY COMPANY, LLC

CRITTER CREEK 15 SE  
S 1/2 SE 1/4, SECTION 15, T11N, R63W, 6th P.M.  
WELD COUNTY, COLORADO



UELS, LLC  
Corporate Office \* 85 South 200 East  
Vernal, UT 84078 \* (435) 789-1017

SURVEYED BY	G.W., N.P.	01-20-17	
DRAWN BY	T.L.	01-30-17	
LOCATION PHOTOS			PHOTO 6