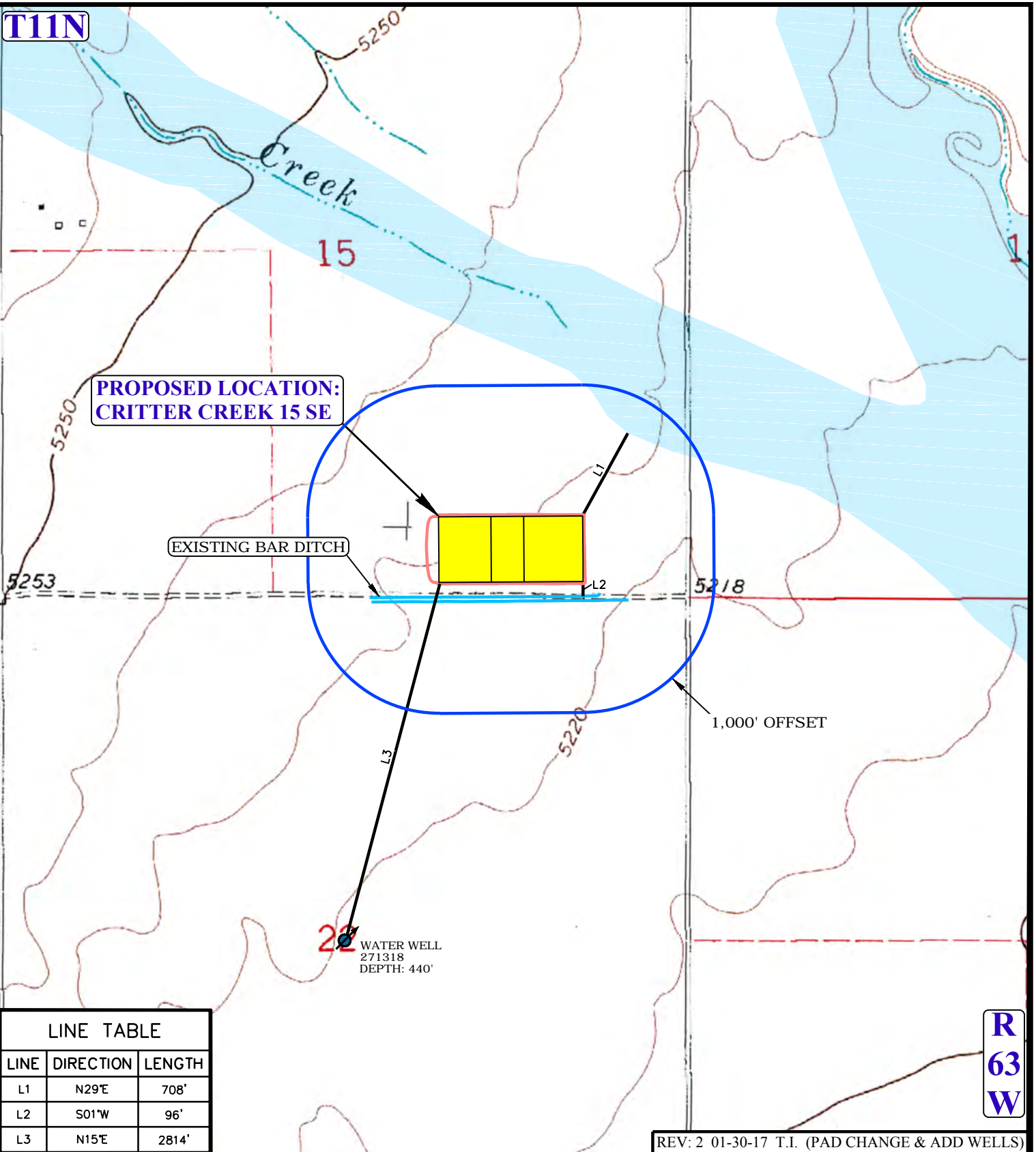


**T11N**



**LEGEND:**

- EXISTING DRAINAGE
- 1000' OFFSET BOUNDARY
- EDGE OF DISTURBANCE
- FLOOD PLAINS
- WATER WELLS



**UELS, LLC**  
Corporate Office \* 85 South 200 East  
Vernal, UT 84078 \* (435) 789-1017



**FIFTH CREEK ENERGY COMPANY, LLC**

**CRITTER CREEK 15 SE**  
S 1/2 SE 1/4, SECTION 15, T11N, R63W, 6th P.M.  
WELD COUNTY, COLORADO

SURVEYED BY	G.W., N.P.	01-20-17	SCALE
DRAWN BY	R.C.	04-01-15	1 : 12,000
HYDROLOGY MAP			TOPO W