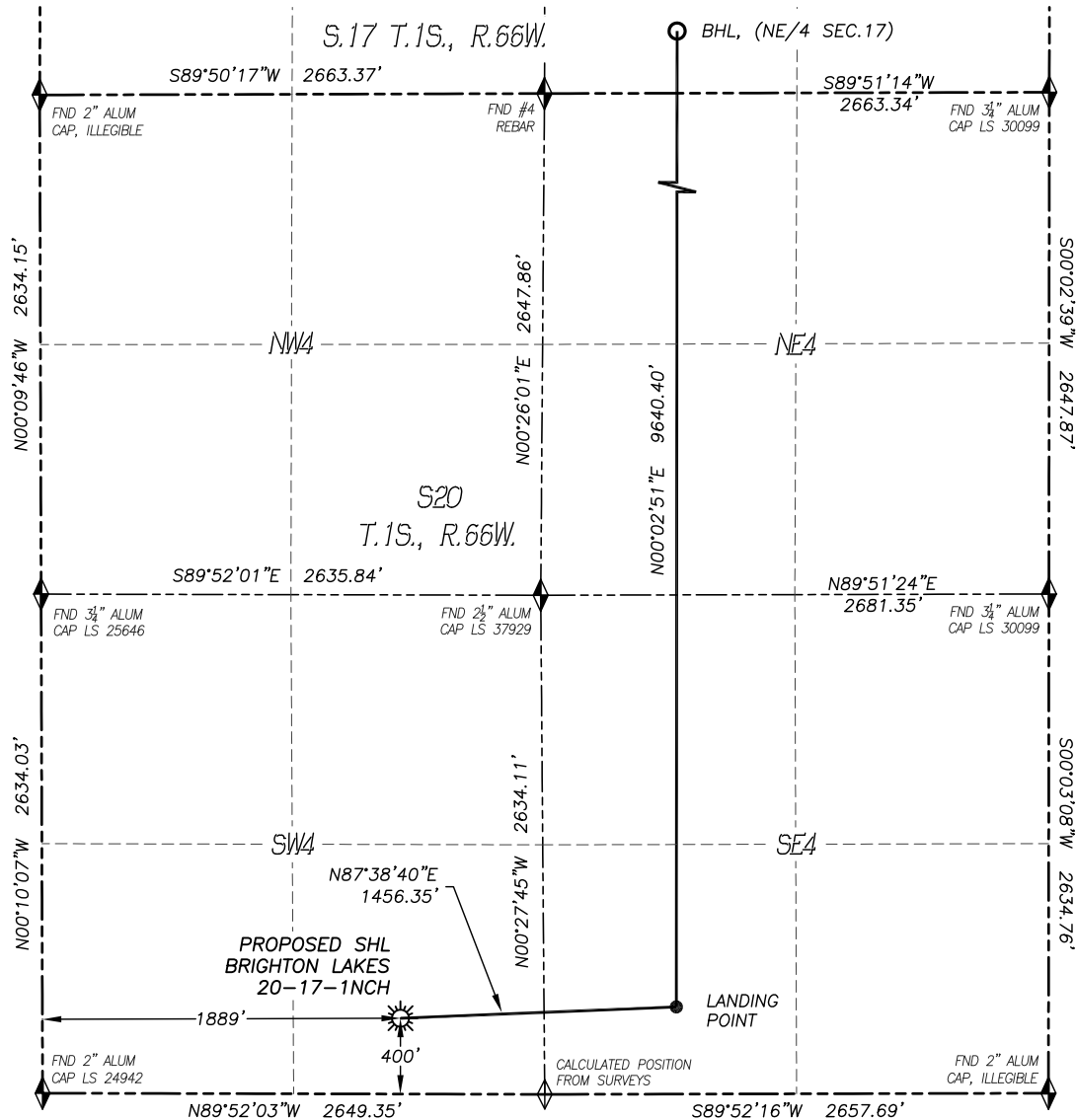


WELL LOCATION CERTIFICATE

BRIGHTON LAKES 20-17-1NCH

SECTION: 20
TOWNSHIP: 1S
RANGE: 66W



IN ACCORDANCE WITH A REQUEST FROM PETROSHARE CORP., DALEY LAND SURVEYING, INC. HAS DETERMINED THE SURFACE LOCATION OF THE BRIGHTON LAKES 20-17-1NCH WELL TO BE 400' FSL, 1889' FWL, AS MEASURED AT NINETY (90) DEGREES FROM THE SECTION LINES OF SECTION 20, TOWNSHIP 1 SOUTH, RANGE 66 WEST, AND THE BOTTOM HOLE LOCATION TO BE 460' FNL, 1964' FEL, AS MEASURED AT NINETY (90) DEGREES FROM THE SECTION LINES OF SECTION 17, TOWNSHIP 1 SOUTH, RANGE 66 WEST OF THE 6TH PRINCIPAL MERIDIAN, ADAMS COUNTY, COLORADO.

I HEREBY CERTIFY THAT THIS WELL LOCATION CERTIFICATE WAS PREPARED BY ME OR UNDER MY DIRECT SUPERVISION, THAT THE WORK WAS COMPLETED ON 12/21/2016 FOR AND ON BEHALF OF PETROSHARE CORP., AND THAT THIS MAP DOES NOT REPRESENT A BOUNDARY SURVEY, IT IS NOT A LAND SURVEY PLAT OR AN IMPROVEMENT SURVEY PLAT AND IT IS NOT TO BE RELIED UPON FOR THE ESTABLISHMENT OF FENCE, BUILDING OR OTHER FUTURE IMPROVEMENT LINES.

NOTES:

- 1) BEARINGS FOR THIS MAP ARE ASSUMED AND BASED UPON GPS OBSERVATIONS MADE BETWEEN MONUMENTS LOCATED AT THE SOUTHWEST CORNER AND WEST QUARTER CORNER OF SECTION 20, T.1S., R.66W.
- 2) HORIZONTAL DATUM IS NAD83.
- 3) VERTICAL DATUM IS NAVD88 AND ORIGINATES FROM THE LOCAL C.O.R.S. NETWORK, UTILIZING THE GEOID12A MODEL.
- 4) SEE LOCATION DRAWING FOR VISIBLE IMPROVEMENTS WITHIN 500' OF PROPOSED DISTURBED AREA.
- 5) SURFACE USE: AGRICULTURAL.
- 6) INST. OPERATOR: KYLE DALEY

NEAREST CULTURAL ITEMS:

BUILDING: 1033'± E
BUILDING UNIT: 1120'± SE
HIGH OCC. BLD. UNIT: 5280'±
DES. OUTSIDE ACTIVITY AREA: 5280'±
PUBLIC ROAD: 386'± S
ABOVE GROUND UTILITY: 432'± S
RAILROAD: 4673'± SE
PROPERTY LINE: 400'± S

NAD 83 LATITUDE AND LONGITUDE

SURFACE LOCATION:

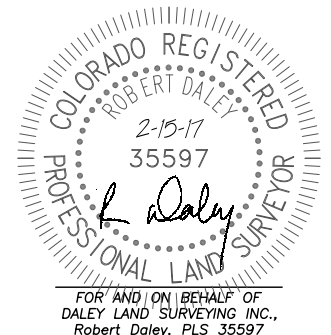
LATITUDE: N39.94442°
LONGITUDE: W104.80209°
ELEVATION: 5047'
PDOP: 1.3
QTR/QTR: SE4/SW4

LANDING POINT:

LATITUDE: N39.94459°
LONGITUDE: W104.79690°
FOOTAGE: 460' FSL, 1964' FEL
SEC. 20, T1S, R66W

BOTTOM HOLE:

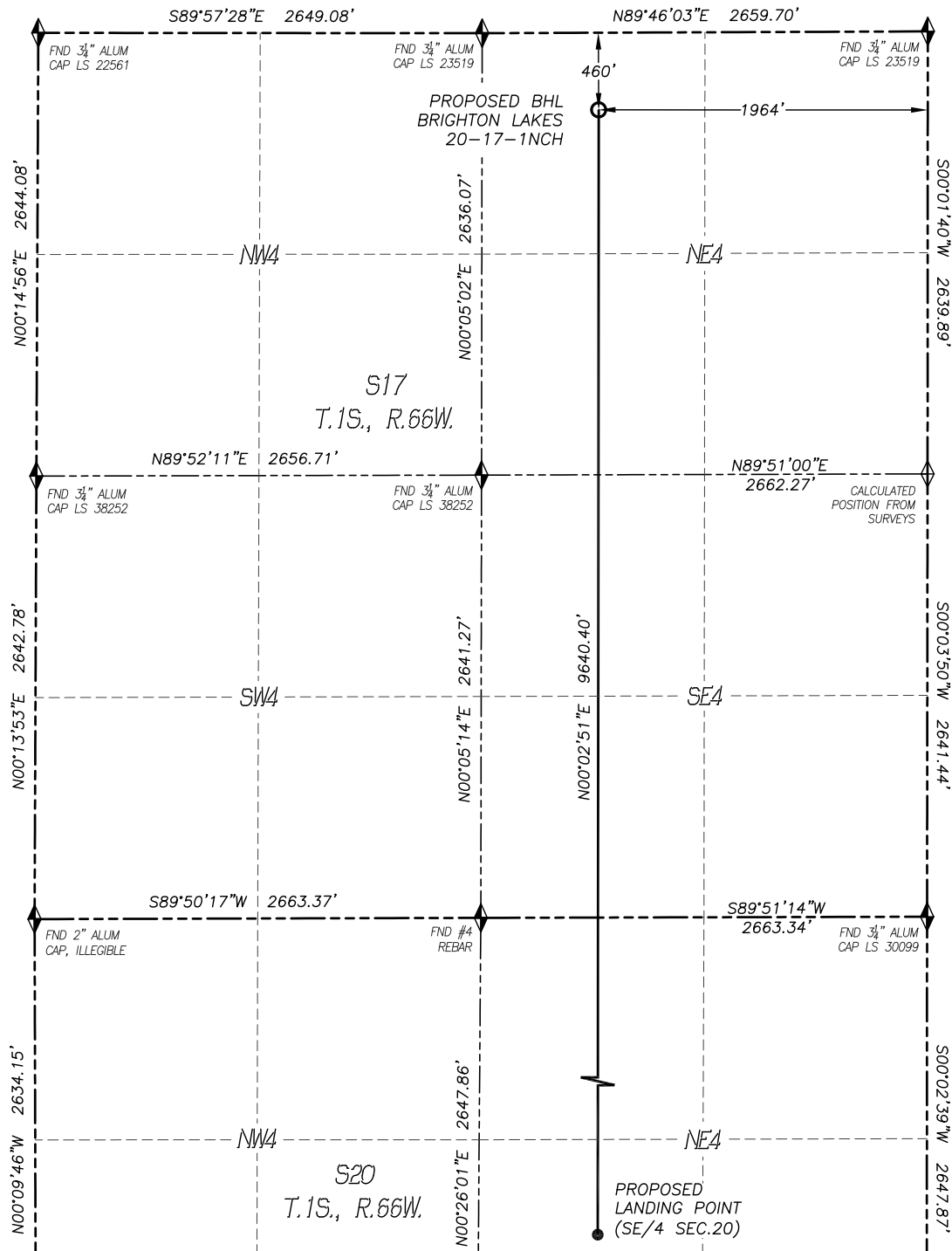
LATITUDE: N39.97104°
LONGITUDE: W104.79685°



WELL LOCATION CERTIFICATE

BRIGHTON LAKES 20-17-1NCH

SECTION: 20
TOWNSHIP: 1S
RANGE: 66W



LEGEND

- FOUND MONUMENT AS DESCRIBED
- PROPOSED WELL
- EXISTING WELL
- BOTTOM HOLE
- ABANDONED WELL
- CALCULATED POSITION

0 1000'
SCALE: 1" = 1000'