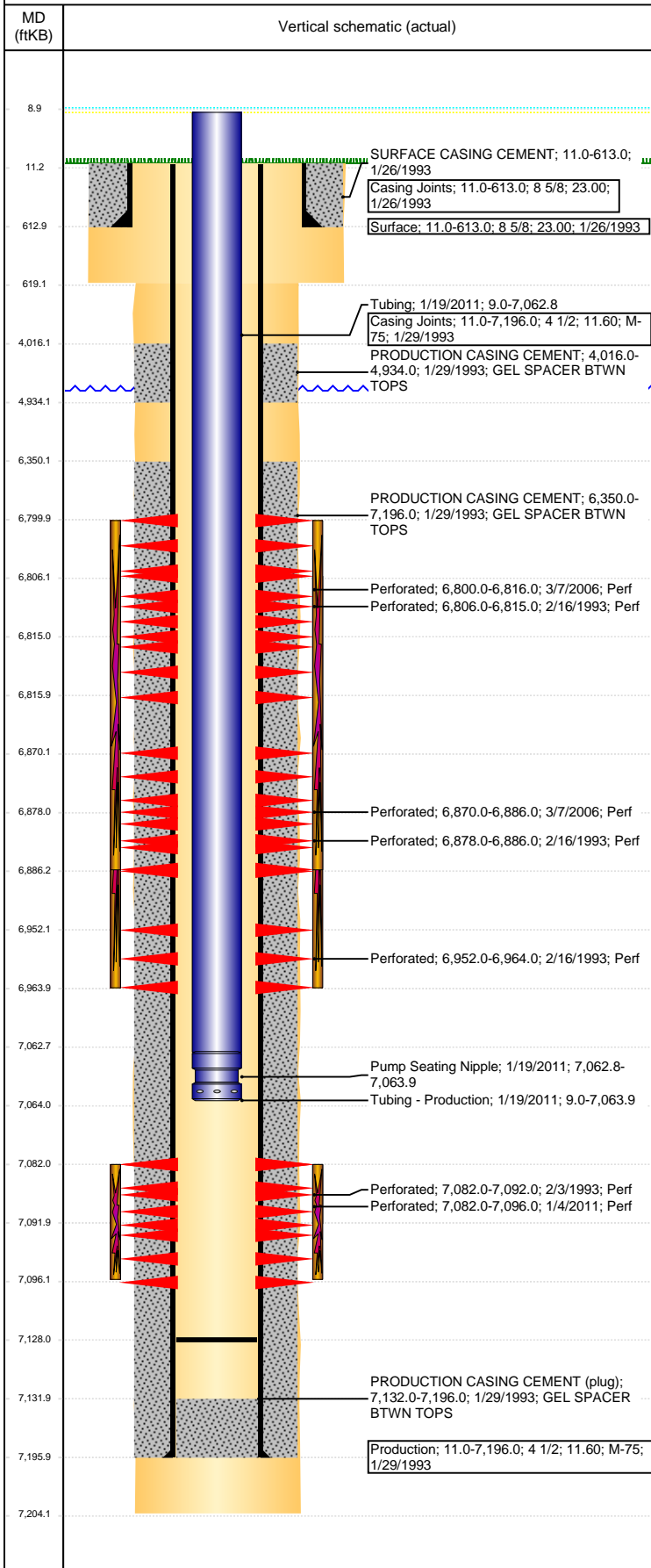


Well Name: BOCKIUS 34-02G

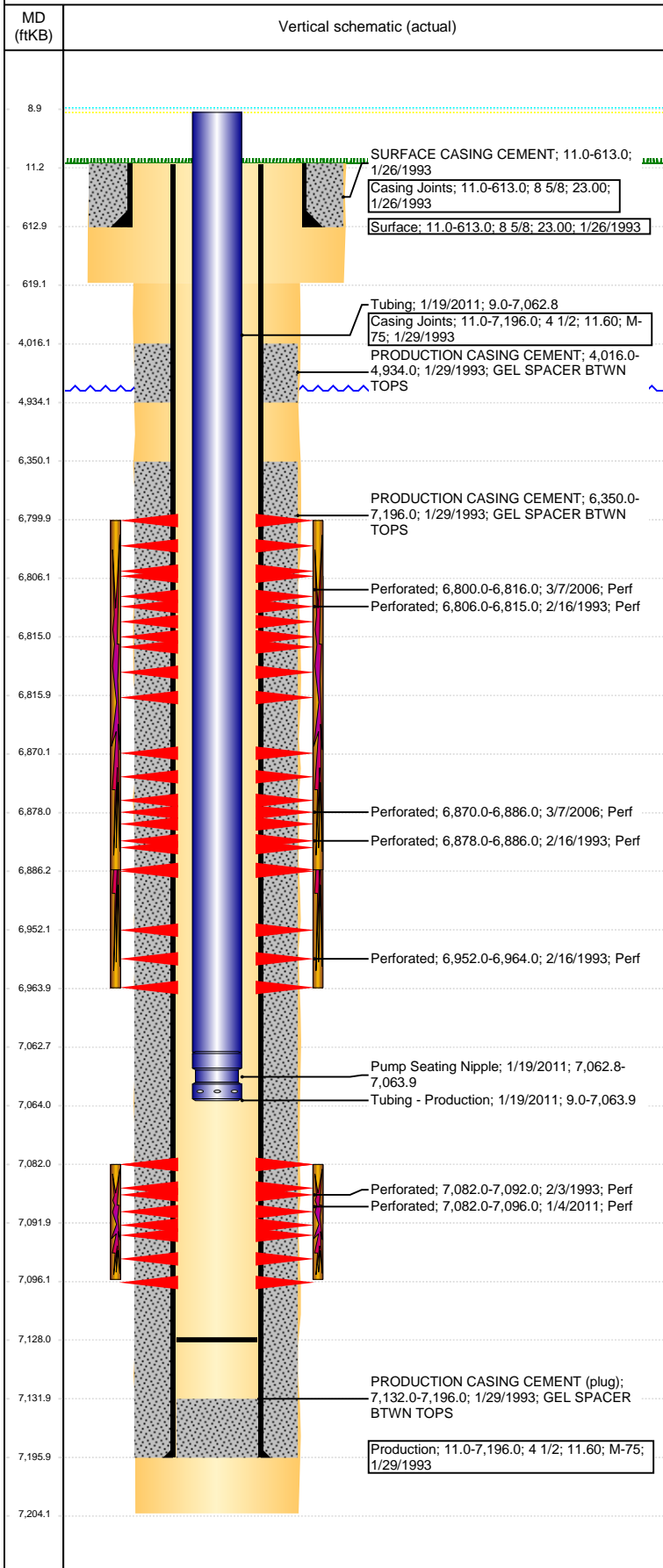
VERTICAL - ORIGINAL HOLE, 3/9/2017 1:55:56 PM



Well Header									
API 05-123-16499		Business Unit DJ BASIN		District 15		Well Config VERTICAL			
Original KB Elevation (ft) 4,756		KB - GL / MSL (ftKB) 11.00		Spud Date 1/25/1993		P & A Date			
Comment CODELL - Frac'd into by 34-7G; PUSH FP TO 7128; LCTN MV'D NOT NOTED ON LOGS. KB= 11'									
Directions To Well RDS 40 & 43 EAST 6/10, SOUTH INTO.									
Congressional Location									
Quarter 3 NW		Quarter 4 NE	Section 34	Township 4	Twtnshp N/S Dir N	Range 65		Range E/W Dir W	
Bottom Hole Location									
North-South Distance (ft)			From N or S Line		East-West Distance (ft)		From E or W Line		
Plug Back Total Depths									
Date		Depth (ftKB)	Method		Com				
2/3/1993		7,132.0	CASED HOLE LOG		GUIDE SHOE				
2/3/1993		7,137.0	CASED HOLE LOG		DEPTH-LOGGER/CBL				
1/19/2011		7,128.0	TUBING TALLY		32' OF RAT HOLE				
Wellbore Sections									
Section Des			Size (in)		Act Top, MD (ftKB)		Act Btm, MD (ftKB)		
SURFACE			12 1/4		11		619		
PRODUCTION			7 7/8		619		7,204		
Zone Statuses									
Zone Name		Status Date	Status	Fluid Type	Job	Prod Method			
CODELL		2/22/1993	PR		DRILLING/CO...				
CODELL		2/24/2011	PR		RE-FRAC, 1/4/...				
NIOBRARA		2/22/1993	PR		DRILLING/CO...				
NIOBRARA		3/24/2006	PR		RE-FRAC, 3/3/...				
Casing Strings									
Surface, 613.0ftKB									
Casing Description Surface		Run Date 1/26/1993	OD (in) 8 5/8	Wt/Len (l...) 23.00	Grade	Top, MD (ft...) 11.0	MD (ftKB) 613.0		
Production, 7,196.0ftKB									
Casing Description Production		Run Date 1/29/1993	OD (in) 4 1/2	Wt/Len (l...) 11.60	Grade M-75	Top, MD (ft...) 11.0	MD (ftKB) 7,196.0		
Cement									
Description SURFACE CASING CEMENT					Top Depth (ftKB) 11.0		Bottom Depth (ftKB) 613.0		
Description PRODUCTION CASING CEMENT					Top Depth (ftKB) 4,016.0		Bottom Depth (ftKB) 4,934.0		
Description PRODUCTION CASING CEMENT					Top Depth (ftKB) 6,350.0		Bottom Depth (ftKB) 7,196.0		
Tubing Strings									
Tubing Description Tubing - Production		Run Date 10/20/2006	String... 2 3/8	ID (in) 2.00	Wt (lb/ft) 4.70	Grade J-55	Len (ft) 7,046.00	Set De... 	
Tubing Description Tubing - Frac string		Run Date 1/4/2011	String... 2 7/8	ID (in) 2.44	Wt (lb/ft) 6.50	Grade N-80	Len (ft) 6,991.75	Set De... 	
Tubing Description Tubing - Production		Run Date 1/19/2011	String... 2 3/8	ID (in) 2.00	Wt (lb/ft) 4.70	Grade J-55	Len (ft) 7,054.88	Set De... 	
Tubing Components									
Item Des		OD (in)	Wt (lb/ft)	Grade	Jts	Len (ft)	Btm (ftKB)	Btm (TVD) (ftKB)	
Tubing		2 3/8	4.70	J-55	216	7,053.78	7,062.8		
Pump Seating Nipple		2 3/8	4.70	J-55	1	1.10	7,063.9		
Other In Hole									
Run Date		Des			OD (in)	Top (ftKB)	Btm (ftKB)		
Logs									
Date		Type				Top, MD (ftKB)		Btm, MD (ftKB)	
1/29/1993		COMPENSATED DENSI				4,300.0		7,202.0	
1/29/1993		INDUCTION				4,300.0		7,202.0	
2/3/1993		CBL				3,800.0		7,132.0	
2/3/1993		SONIC CEMENT BOND				3,800.0		7,132.0	

Well Name: BOCKIUS 34-02G

VERTICAL - ORIGINAL HOLE, 3/9/2017 1:55:58 PM



Logs					
Date		Type		Top, MD (ftKB)	Btm, MD (ftKB)
11/3/2010		GYRO		11.0	7,000.0
Perforation Data					
Linked Zone	Bnch/St g	Sum of Entered Shot Total	Top (ftKB)	Btm (ftKB)	Date
NIOBRARA, ORIGINAL HOLE	A	96	6,800.00	6,816.00	3/7/2006
NIOBRARA, ORIGINAL HOLE	A	8	6,806.00	6,815.00	2/16/1993
NIOBRARA, ORIGINAL HOLE	B	96	6,870.00	6,886.00	3/7/2006
NIOBRARA, ORIGINAL HOLE	B	10	6,878.00	6,886.00	2/16/1993
NIOBRARA, ORIGINAL HOLE	C	6	6,952.00	6,964.00	2/16/1993
CODELL, ORIGINAL HOLE		56	7,082.00	7,096.00	1/4/2011
CODELL, ORIGINAL HOLE		20	7,082.00	7,092.00	2/3/1993
Total (Sum)		292			
Stimulation Intervals					
Start Date		Primary Job Type			
2/5/1993		DRILLING/COMPLETION - ORIGINAL			
Technical Result		Tech Result Details		Tech Result Note	
Comment					
Start Date		Primary Job Type			
3/23/2006		RE-FRAC			
Technical Result		Tech Result Details		Tech Result Note	
Comment					
Start Date		Primary Job Type			
1/13/2011		RE-FRAC			
Technical Result		Tech Result Details		Tech Result Note	
Success		According to Plan			
Comment					
(CODELL RF) GOOD JOB. DUE NEGATIVE NOLTE SLOPE - WAITED TO MAKE GEL CHANGE TO 25#. MADE 25# GEL CHANGE WHERE 26# WAS SCHEDULED, AND DID NOT PUMP 26#. AVG VISC = 23.4 CP, AVG TEMP = 75.31 F, AVG PH = 10.24, POST-JOB 5 MINUTE = 3025 PSI.					
Start Date		Primary Job Type			
2/17/1993		DRILLING/COMPLETION - ORIGINAL			
Technical Result		Tech Result Details		Tech Result Note	
Comment					