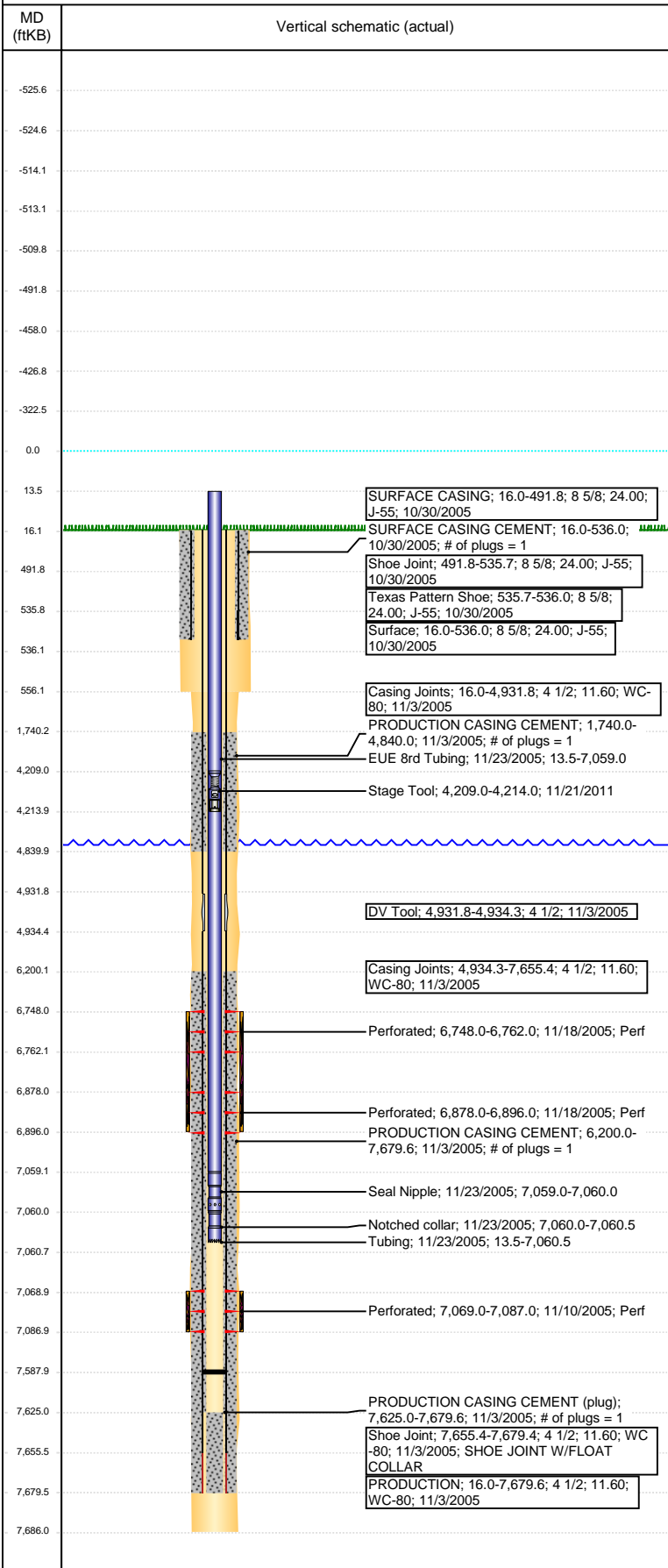


**Well Name: STATE M36-09**

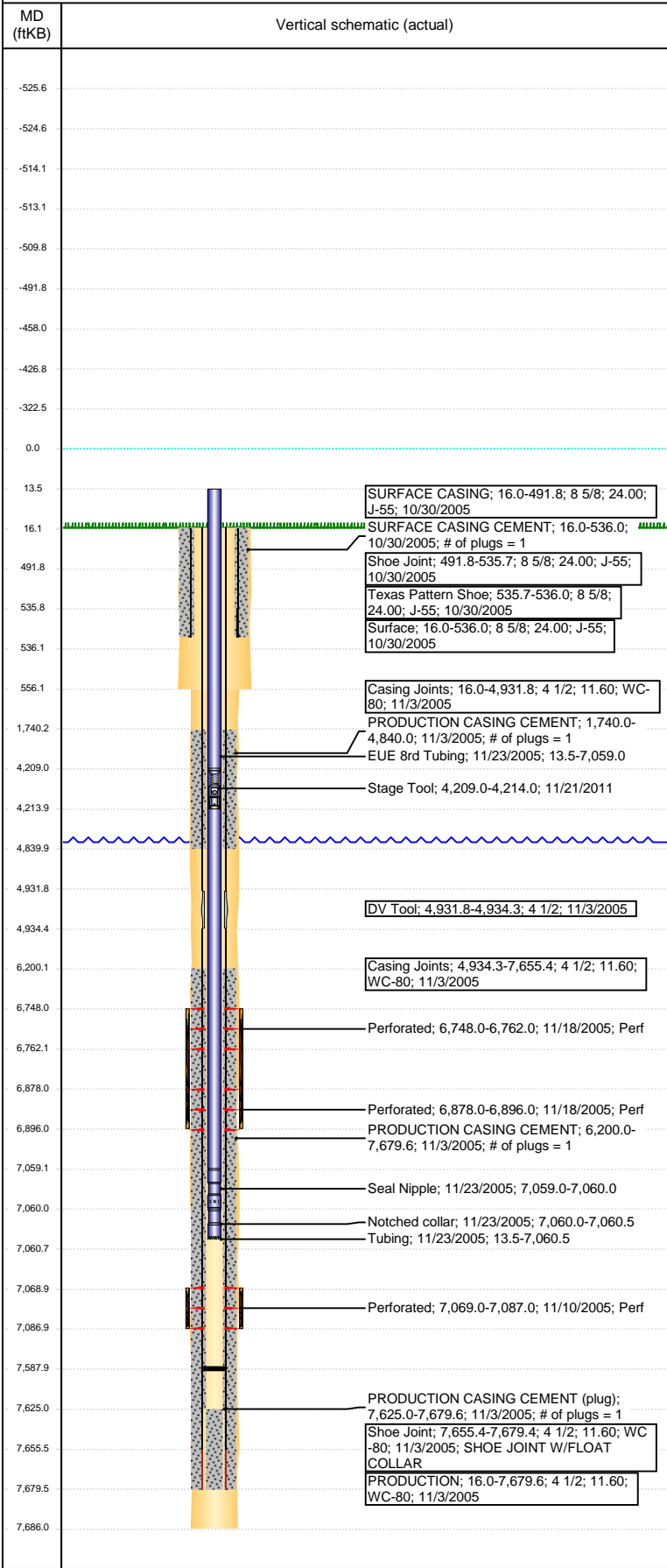
DEVIATED - ORIGINAL HOLE, 3/9/2017 10:09:37 AM



Well Header			
API	Business Unit	District	Well Config
05-123-23207	DJ BASIN	15	DEVIATED
Original KB Elevation (ft)	KB - GL / MSL (ftKB)	Spud Date	P & A Date
4,735	16.00	10/29/2005	
Comment			
STATE LEASE 80/5074, DV TOOL AT 4932, DRILLED OUT 11/9/2005. CFP PUSHED TO 7588' 11/23/2005			
Directions To Well			
Congressional Location			
Quarter 3	Quarter 4	Section	Township
NE	SE	36	6
Twonshp N/S Dir		Range	Range E/W Dir
N		67	W
Bottom Hole Location			
North-South Distance (ft)		From N or S Line	East-West Distance (ft)
1,958.0		S	596.0
From E or W Line			
E			
Plug Back Total Depths			
Date	Depth (ftKB)	Method	Com
11/3/2005	7,655.0	CASING TALLY	ORIGINAL PBTD, FLOAT COLLAR
11/10/2005	7,625.0	CASED HOLE LOG	DEPTH LOGGER
11/23/2005	7,588.0	TAG	DRILLED PLUG, CHASED PLUG TO 7588'
Wellbore Sections			
Section Des	Size (in)	Act Top, MD (ftKB)	Act Btm, MD (ftKB)
SURFACE	12 1/4	16	556
PRODUCTION	7 7/8	556	7,686
Zone Statuses			
Zone Name	Status Date	Status	Fluid Type
NIOBRARA	1/28/2005	PR	Water
NIOBRARA	1/26/2010	PR	Water
CODELL	11/28/2005	PR	Water
CODELL	1/26/2010	PR	Water
CODELL	9/23/2016	PR	Water
Casing Strings			
Surface, 536.0ftKB			
Casing Description	Run Date	OD (in)	Wt/Len (lb/ft)
Surface	10/30/2005	8 5/8	24.00
Grade	Top, MD (ftKB)	MD (ftKB)	
J-55	16.0	536.0	
PRODUCTION, 7,679.6ftKB			
Casing Description	Run Date	OD (in)	Wt/Len (lb/ft)
PRODUCTION	11/3/2005	4 1/2	11.60
Grade	Top, MD (ftKB)	MD (ftKB)	
WC-80	16.0	7,679.6	
Cement			
Description	Top Depth (ftKB)	Bottom Depth (ftKB)	
SURFACE CASING CEMENT	16.0	536.0	
PRODUCTION CASING CEMENT	1,740.0	4,840.0	
PRODUCTION CASING CEMENT	6,200.0	7,679.6	
Tubing Strings			
Tubing Description	Run Date	String...	ID (in)
Tubing	11/23/2005	2 3/8	2.00
Wt (lb/ft)	Grade	Len (ft)	Set De...
4.70	J-55	7,047.04	
Tubing Components			
Item Des	OD (in)	Wt (lb/ft)	Grade
EUE 8rd Tubing	2 3/8	4.70	J-55
Seal Nipple	2 3/8		
Notched collar	2 3/8		
Jts	Len (ft)	Btm (ftKB)	Btm (TVD) (ftKB)
214	7,045.54	7,059.0	
1	1.00	7,060.0	
1	0.50	7,060.5	
Other In Hole			
Run Date	Des	OD (in)	Top (ftKB)
11/21/2011	Stage Tool	2	4,209.0
Btm (ftKB)			
4,214.0			
Logs			
Date	Type	Top, MD (ftKB)	Btm, MD (ftKB)
11/2/2005	COMPENSATED DENSITY	2,000.0	7,687.0
11/2/2005	INDUCTION	536.0	7,687.0
11/10/2005	CBL/CCL/GR	6,140.0	7,622.0
11/10/2005	CBL/CCL/GR	6,140.0	7,622.0
Perforation Data			
Linked Zone	Bnch/St g	Sum of Entered Shot Total	Top (ftKB)
NIOBRARA, ORIGINAL HOLE	A	84	6,748.00
Btm (ftKB)	Date		
6,762.00	11/18/2005		

**Well Name: STATE M36-09**

DEVIATED - ORIGINAL HOLE, 3/9/2017 10:09:38 AM



Perforation Data					
Linked Zone	Bnch/St g	Sum of Entered Shot Total	Top (ftKB)	Btm (ftKB)	Date
NIOBRARA, ORIGINAL HOLE	B	108	6,878.00	6,896.00	11/18/2005
CODELL, ORIGINAL HOLE		72	7,069.00	7,087.00	11/10/2005
<b>Total (Sum)</b>		<b>264</b>			

Stimulation Intervals		
Start Date 11/18/2005	Primary Job Type DRILLING/COMPLETION - ORIGINAL	
Technical Result	Tech Result Details	Tech Result Note
Comment		

Start Date 11/18/2005	Primary Job Type DRILLING/COMPLETION - ORIGINAL	
Technical Result	Tech Result Details	Tech Result Note
Comment		