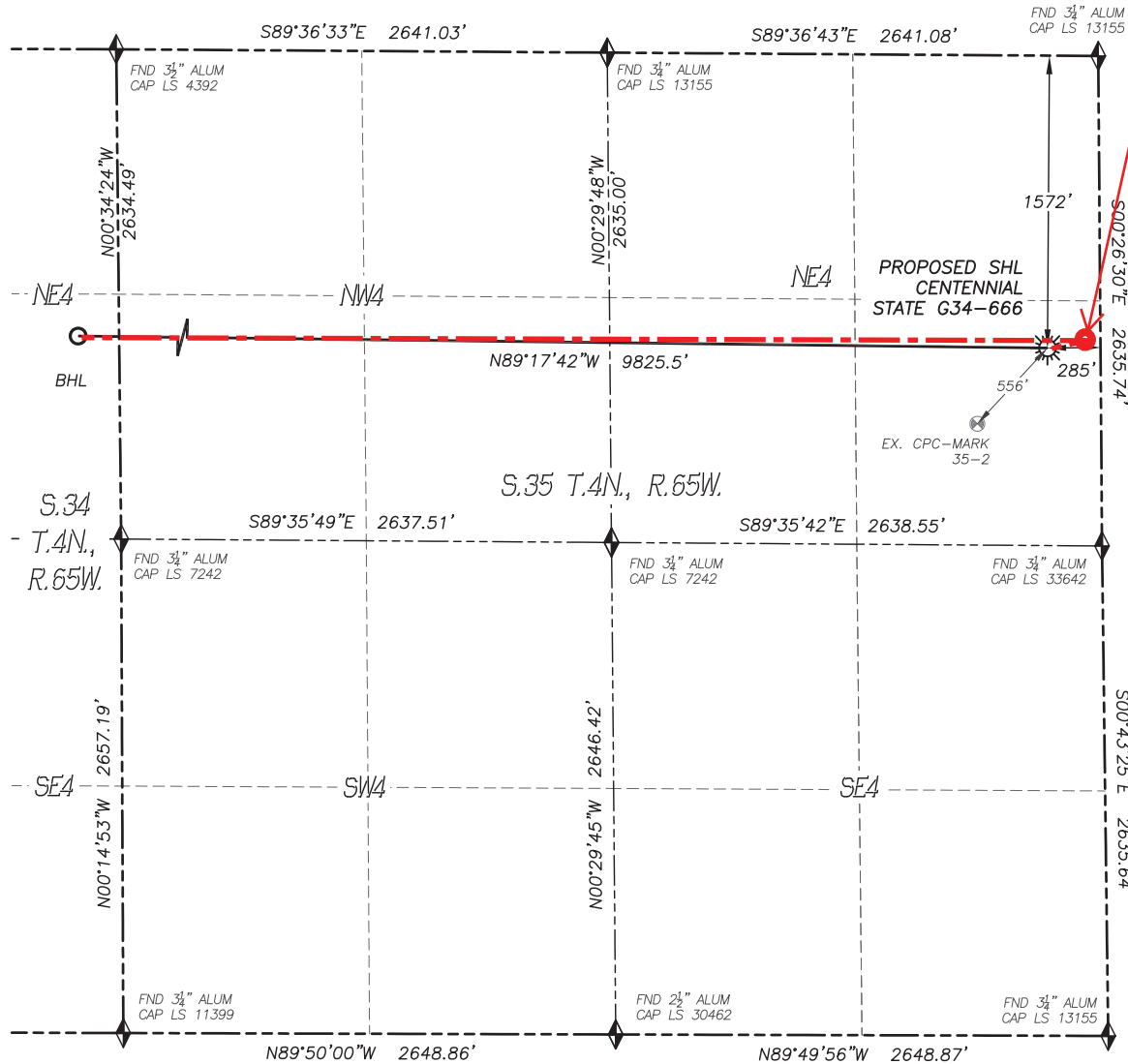
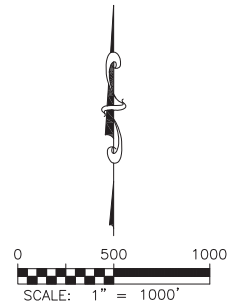


DALEY LAND SURVEYING, INC. 970.302.4159
WELL LOCATION CERTIFICATE
CENTENNIAL STATE G34-666

SECTION: 35
 TOWNSHIP: 4N
 RANGE: 65W



Approximate Top of
 Producing Zone:
 1500' FNL, 55' FEL,
 Sec 35, T4N- R65W.
HAND DRAWN
3/2/2017
 Depiction was not surveyed and
 was added by NBL



LEGEND

	FOUND MONUMENT AS DESCRIBED
	PROPOSED WELL
	EXISTING WELL
	BOTTOM HOLE
	ABANDONED WELL
	CALCULATED POSITION

IN ACCORDANCE WITH A REQUEST FROM REGGY GRAY OF NOBLE ENERGY INC., DALEY LAND SURVEYING, INC. HAS DETERMINED THE SURFACE LOCATION OF THE CENTENNIAL STATE G34-666 WELL TO BE 1572' FNL, 285' FEL, AS MEASURED AT NINETY (90) DEGREES FROM THE SECTION LINES OF SECTION 35, TOWNSHIP 4 NORTH, RANGE 65 WEST, AND THE BOTTOM HOLE LOCATION TO BE 1500' FNL, 460' FWL, AS MEASURED AT NINETY (90) DEGREES FROM THE SECTION LINES OF SECTION 34, TOWNSHIP 4 NORTH, RANGE 65 WEST, OF THE 6TH PRINCIPAL MERIDIAN, WELD COUNTY, COLORADO.

I HEREBY STATE THAT THIS WELL LOCATION CERTIFICATE WAS PREPARED BY ME OR UNDER MY DIRECT SUPERVISION, THAT THE WORK WAS COMPLETED ON 5/15/2015 FOR AND ON BEHALF OF NOBLE ENERGY, INC., AND THAT THIS MAP DOES NOT REPRESENT A BOUNDARY SURVEY, IT IS NOT A LAND SURVEY PLAT OR AN IMPROVEMENT SURVEY PLAT AND IT IS NOT TO BE RELIED UPON FOR THE ESTABLISHMENT OF FENCE, BUILDING OR OTHER FUTURE IMPROVEMENT LINES.

NOTES:

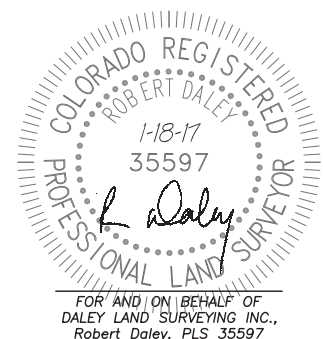
- 1) BEARINGS FOR THIS MAP ARE ASSUMED AND BASED UPON GPS OBSERVATIONS MADE BETWEEN MONUMENTS LOCATED AT THE SOUTHEAST CORNER AND EAST QUARTER CORNER OF SECTION 35, T.4N., R.65W.
- 2) HORIZONTAL DATUM IS NAD83.
- 3) VERTICAL DATUM IS NAVD88 AND ORIGINATES FROM THE LOCAL C.O.R.S. NETWORK, UTILIZING THE GEOID12A MODEL.
- 4) SEE LOCATION DRAWING FOR VISIBLE IMPROVEMENTS WITHIN 500' OF PROPOSED DISTURBED AREA.
- 5) SURFACE USE: RANGE LAND.
- 6) INST. OPERATOR: SCOTT ESTABROOKS.
- 7) NEAREST WELL: 556'± SW. - CPC-MARK 35-2

NEAREST CULTURAL ITEMS:

- | | |
|--------------------------------|-----------|
| 1) BUILDING: | 2010'± N |
| 2) BUILDING UNIT: | 1150'± SW |
| 3) HIGH OCC. BLD. UNIT: | 5280'± |
| 4) DES. OUTSIDE ACTIVITY AREA: | 5280'± |
| 5) PUBLIC ROAD: | 273'± E |
| 6) ABOVE GROUND UTILITY: | 943'± NW |
| 7) RAILROAD: | 5280'± |
| 8) PROPERTY LINE: | 285'± E |

NAD 83 LATITUDE AND LONGITUDE

SURFACE LOCATION:		BOTTOM HOLE:	
LATITUDE:	N40.27166°	LATITUDE:	N40.27201°
LONGITUDE:	W104.62208°	LONGITUDE:	W104.65728°
ELEV:	4784'		
PDOP:	1.3		
QTR/QTR:	SE4/NE4		



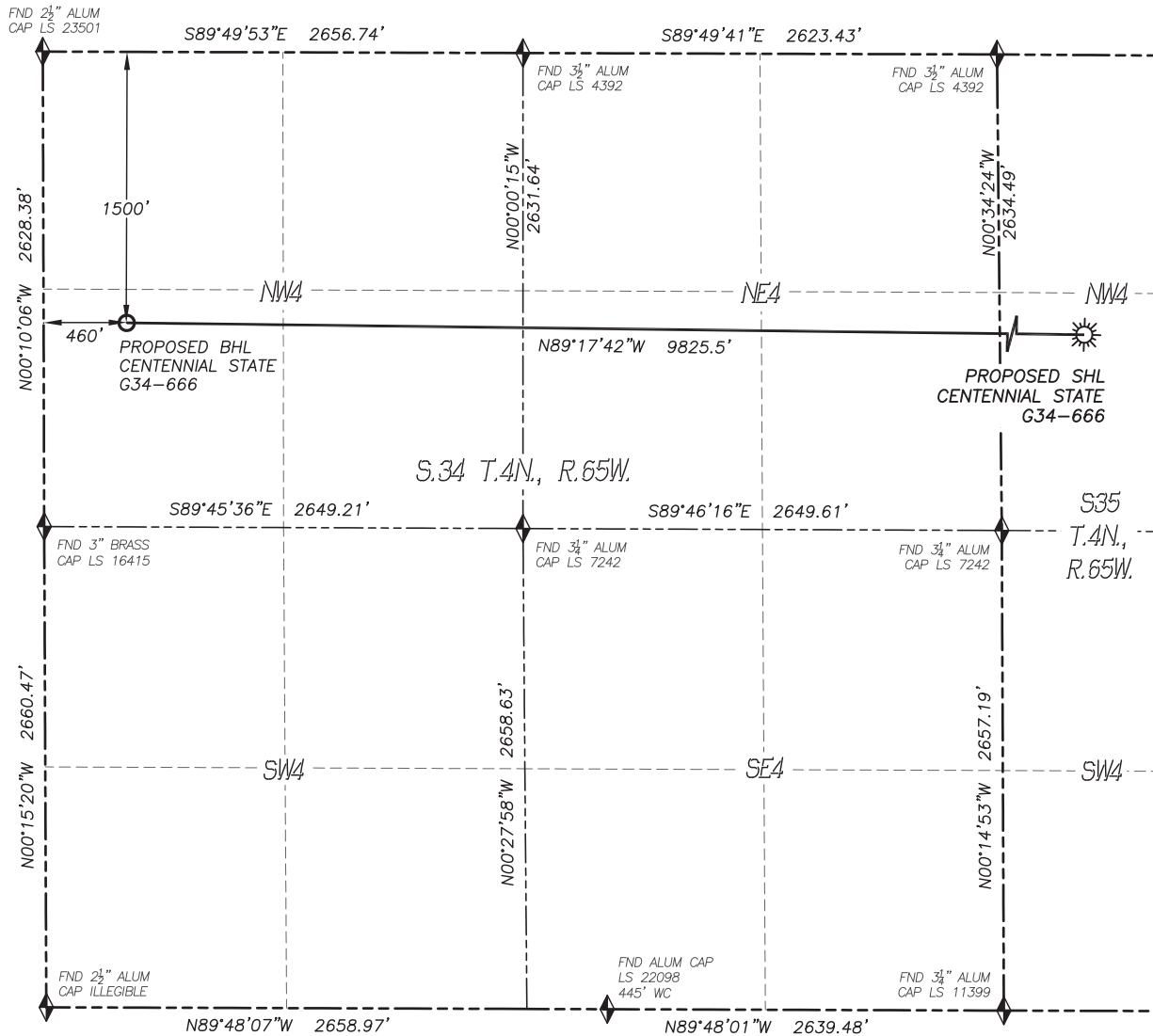
SHEET 1 OF 2

Drawing Date: 1/18/17

WELL LOCATION CERTIFICATE

CENTENNIAL STATE G34-666

SECTION: 35
TOWNSHIP: 4N
RANGE: 65W



- LEGEND**
- ◆ FOUND MONUMENT AS DESCRIBED
 - ☀ PROPOSED WELL
 - ⊙ EXISTING WELL
 - BOTTOM HOLE
 - ⊘ ABANDONED WELL
 - ◆ CALCULATED POSITION

