




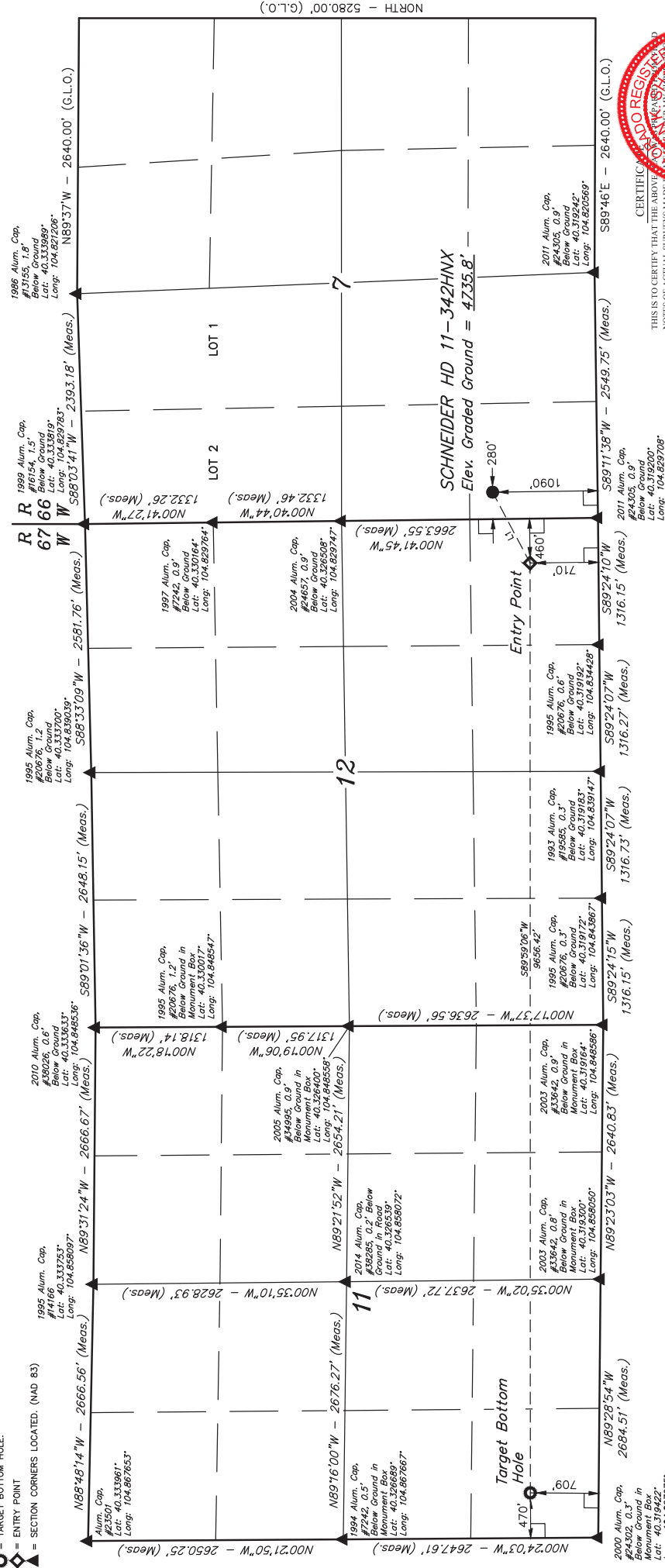


LEGEND:

-  = 90° SYMBOL
 = PROPOSED WELLHEAD.
 = TARGET BOTTOM HOLE.
 = ENTRY POINT
 = SECTION CORNERS LOCATED. (NAD 83)



CERTIFICATE

THIS IS TO CERTIFY THAT THE ABOVE
NOTES OF ACTUAL SURVEYS MADE
UNDER MY SUPERVISION ARE TRUE AND
CORRECT TO THE BEST OF MY
KNOWLEDGE AND BELIEF.

REGISTERED LAND SURVEYOR
REGISTRATION NO. 28265
STATE OF TEXAS

RECEIVED
DEPT. OF REVENUE
APR 29 2013
[Signature]

REV. 2 12-16-16 C.C. (BHL & NAME CHANGE)

BASIS OF BEARINGS

USGS COOPERATIVE BASE NETWORK CONTROL STATION,
DESIGNATION "VERMILYEA". NGS DATA SHEET LISTS THE
NAVD 88 ELEVATION AS BEING 5026 FEET.

UELS, LLC
Corporate Office * 85 South 200 East
Vernal, UT 84078 * (435) 789-1017



PHOP - 14

NAD 83 (SURFACE LOCATION)	NAD 83 (TARGET BOTTOM HOLE)
LATITUDE = 40°19'09.50" (40.32194)	LATITUDE = 40°19'08.85" (40.321347)
LONGITUDE = 105°49'43.40" (104.828722)	LONGITUDE = 104°51'27.55" (104.8658986)
NAD 27 (SURFACE LOCATION)	NAD 27 (TARGET BOTTOM HOLE)
LATITUDE = 40°19'09.50" (40.322144)	LATITUDE = 40°19'08.85" (40.321347)
LONGITUDE = 105°49'52.93" (104.831369)	LONGITUDE = 104°51'27.55" (104.8658986)
NAD 83 (ENTRY POINT)	NAD 27 (ENTRY POINT)
LATITUDE = 40°19'16.12" (40.321144)	LATITUDE = 40°19'16.18" (40.321184)
LONGITUDE = 105°49'52.93" (104.831369)	LONGITUDE = 104°50'51.33" (104.838622)
NAD 27 (ENTRY POINT)	NAD 83 (ENTRY POINT)
LATITUDE = 40°19'16.18" (40.321184)	LATITUDE = 40°19'09.50" (40.322144)
LONGITUDE = 104°50'51.33" (104.838622)	LONGITUDE = 105°49'43.40" (104.828722)

GREAT WESTERN OPERATING COMPANY

**SCHNEIDER HD 11-342HNX
SW 1/4 SW 1/4, SECTION 7, T4N, R66W, 6th P.M.
WELD COUNTY, COLORADO**

SURVEYED BY	GREG WEIMER, J.S.	05-27-16	SCALE
DRAWN BY	K.B.	05-31-16	1" = 1000'

LINE TABLE		
LINE	DIRECTION	LENGTH
L1	S62°07'38"W	831.82'