



# Kerr-McGee Oil & Gas Onshore LP

A subsidiary of Anadarko Petroleum Corporation

1099 18<sup>th</sup> Street  
Denver, CO 80202  
720-929-6000

February 23, 2017

Matt Lepore  
Director, Colorado Oil and Gas Conservation Commission  
Department of Natural Resources  
The Chancery Building  
1120 Lincoln Street, Suite 801  
Denver, CO 80203

Re: **30 Day Certification Letter - 318A.e**  
RW 37N-32HZ (Doc No. 401208917)  
Township 3 North, Range 65 West  
Section 29: SWSE  
Unit Acreage: 240 acres  
Unit Spacing: T3N-R65W Sec 29: SE/4SE/4;  
Sec 32: E/2E/2; T2N-R65W  
Sec 5: NE/4NE/4  
Weld County, Colorado

Dear Director Lepore:

Kerr McGee Oil and Gas Onshore LP (“KMG”) hereby certifies that KMG owns one hundred percent (100%) of the leasehold interest in the mineral rights in the proposed spacing unit. KMG hereby respectfully requests approval of this boundary well.

If you have any questions or issues regarding this permit, please contact our office.

Sincerely,

**Kerr-McGee Oil and Gas Onshore LP**

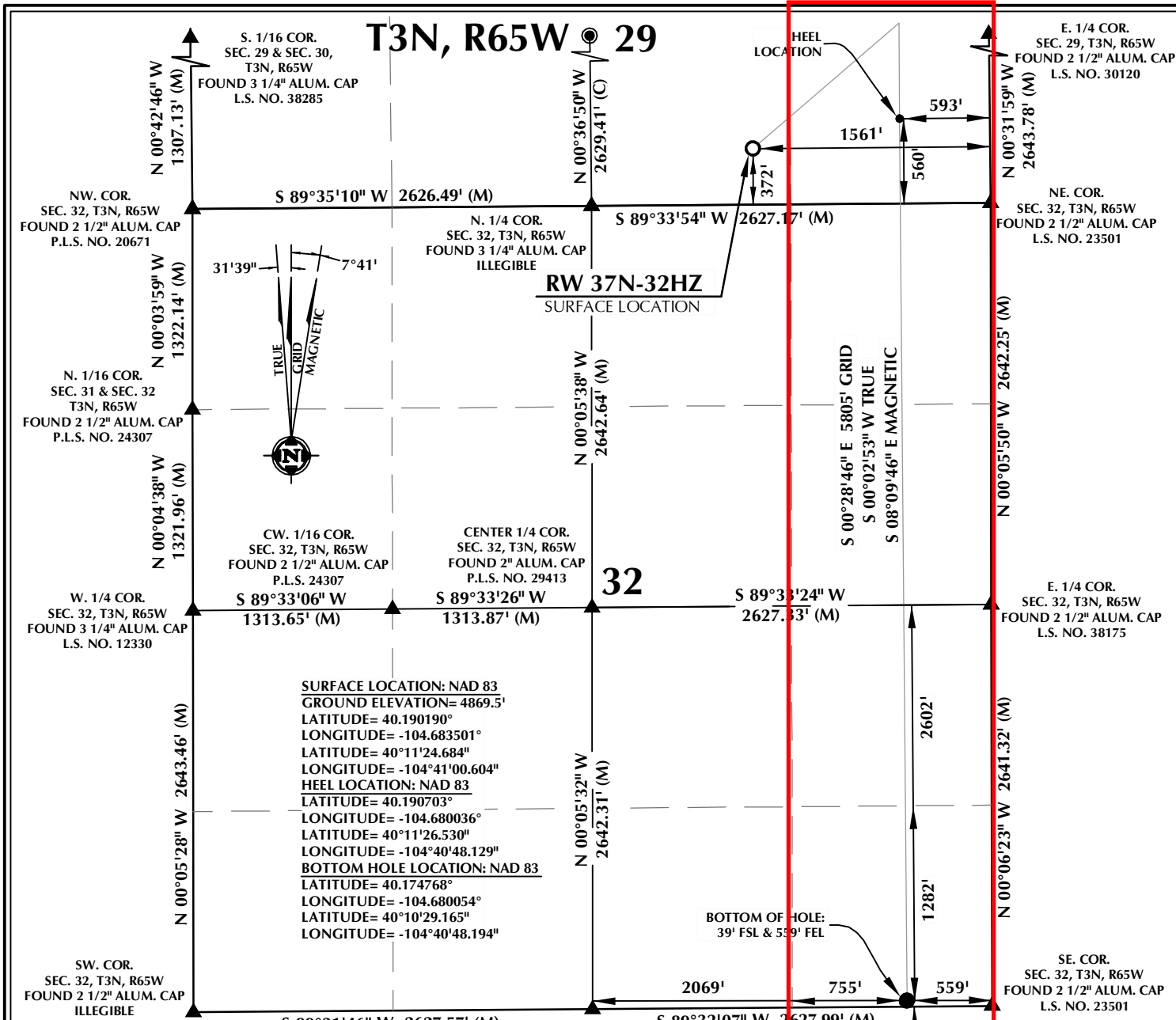
A handwritten signature in blue ink, appearing to read 'Craig Richardson'.

Craig Richardson  
Regulatory Analyst II

Enclosure

PROPOSED SPACING UNIT MAP

T3N, R65W 29

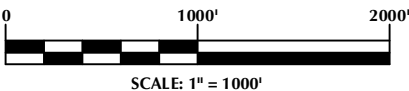


**SURFACE LOCATION: NAD 83**  
 GROUND ELEVATION= 4869.5'  
 LATITUDE= 40.190190°  
 LONGITUDE= -104.683501°  
**HEEL LOCATION: NAD 83**  
 LATITUDE= 40.190703°  
 LONGITUDE= -104.680036°  
**BOTTOM HOLE LOCATION: NAD 83**  
 LATITUDE= 40.174768°  
 LONGITUDE= -104.680054°  
 LONGITUDE= -104°40'48.194"

**CERTIFICATE OF SURVEYOR:**

THIS IS TO CERTIFY THAT THE ABOVE PLAT WAS PREPARED FROM FIELD NOTES OF ACTUAL SURVEY MADE BY ME OR UNDER MY SUPERVISION AND THAT THE SAME ARE TRUE AND CORRECT TO THE BEST OF MY KNOWLEDGE AND BELIEF. THIS CERTIFICATE DOES NOT REPRESENT A LAND SURVEY, PLAT OR IMPROVEMENT SURVEY PLAT AS DEFINED BY C.R.S. 38-51-302 AND CANNOT BE RELIED UPON TO DETERMINE OWNERSHIP.

*Randall K. French*  
 RANDALL K. FRENCH  
 PROFESSIONAL LAND SURVEYOR  
 COLORADO REGISTRATION NUMBER 38512



**NOTE:**  
 MAGNETIC NORTH IS CURRENT AS OF 11/10/2016.  
 MAGNETIC NORTH CHANGES WEST 0'06" PER YEAR.

**NOTES:**

- ▲ INDICATES SECTION CORNER
- INDICATES CALCULATED CORNER
- ELEVATION BASED ON NAVD88 (GEOID12B)
- BASIS OF BEARING DERIVED FROM COLORADO COORDINATE SYSTEM OF 1983 NORTH ZONE.
- ALL MEASURED DISTANCES ARE GRID.
- COMBINED SCALE FACTOR: .9972501 CALCULATED FROM THE W. 1/4 CORNER OF SECTION 29, T3N, R65W
- OPERATOR: ROB WILSON / PDOP = 1.3
- SEE ADDENDUM TO WELL LOCATION CERTIFICATE FOR EXISTING IMPROVEMENTS WITHIN 500' OF THE WELL PAD.
- WELL FOOTAGES ARE MEASURED AT RIGHT ANGLES TO THE SECTION LINES.
- THE BOTTOM OF HOLE BEARS S00°28'46"E, 5805' FROM THE HEEL LOCATION.

**WELL PAD - RW 15N-32HZ**

**RW 37N-32HZ**  
 LOCATION CERTIFICATE  
 372' FSL & 1561' FEL SWSE (SURFACE)  
 560' FSL & 593' FEL SESE (HEEL)  
 LOCATED IN SECTION 29  
 39' FSL & 559' FEL SESE (BOTTOM)  
 LOCATED IN SECTION 32  
 T3N, R65W, 6TH P.M.  
 WELD COUNTY, COLORADO

**Kerr-McGee Oil & Gas Onshore L.P.**  
 1099 18th Street  
 Denver, Colorado 80202



**CONSULTING, LLC**

**SHERIDAN OFFICE**  
 1095 Saberton Avenue  
 Sheridan, Wyoming 82801  
 Phone 307-674-0609

**LOVELAND OFFICE**  
 1635 Foxtrail Drive, Suite 204  
 Loveland, Colorado 80538  
 Phone 970-776-4331

DRAFTED BY:	LMO	CHECKED BY:	RKF
DATE DRAFTED:	12/20/16	DATE SURVEYED:	11/6/16
REVISED:		FILE NAME:	16-147