



Kerr-McGee Oil & Gas Onshore LP

A subsidiary of Anadarko Petroleum Corporation

1099 18th Street
Denver, CO 80202
720-929-6000

February 23, 2017

Matt Lepore
Director, Colorado Oil and Gas Conservation Commission
Department of Natural Resources
The Chancery Building
1120 Lincoln Street, Suite 801
Denver, CO 80203

Re: **30 Day Certification Letter - 318A.e**
RW 36N-32HZ (Doc No. 401208926)
Township 3 North, Range 65 West
Section 29: SWSE
Unit Acreage: 480 acres
Unit Spacing: T3N-R65W Sec 29: SW/4SE/4;
Sec 32: W/2E/2; T2N-R65W
Sec 5: NW/4NE/4
Weld County, Colorado

Dear Director Lepore:

Kerr McGee Oil and Gas Onshore LP ("KMG") hereby certifies that KMG owns one hundred percent (100%) of the leasehold interest in the mineral rights in the proposed spacing unit. KMG hereby respectfully requests approval of this boundary well.

If you have any questions or issues regarding this permit, please contact our office.

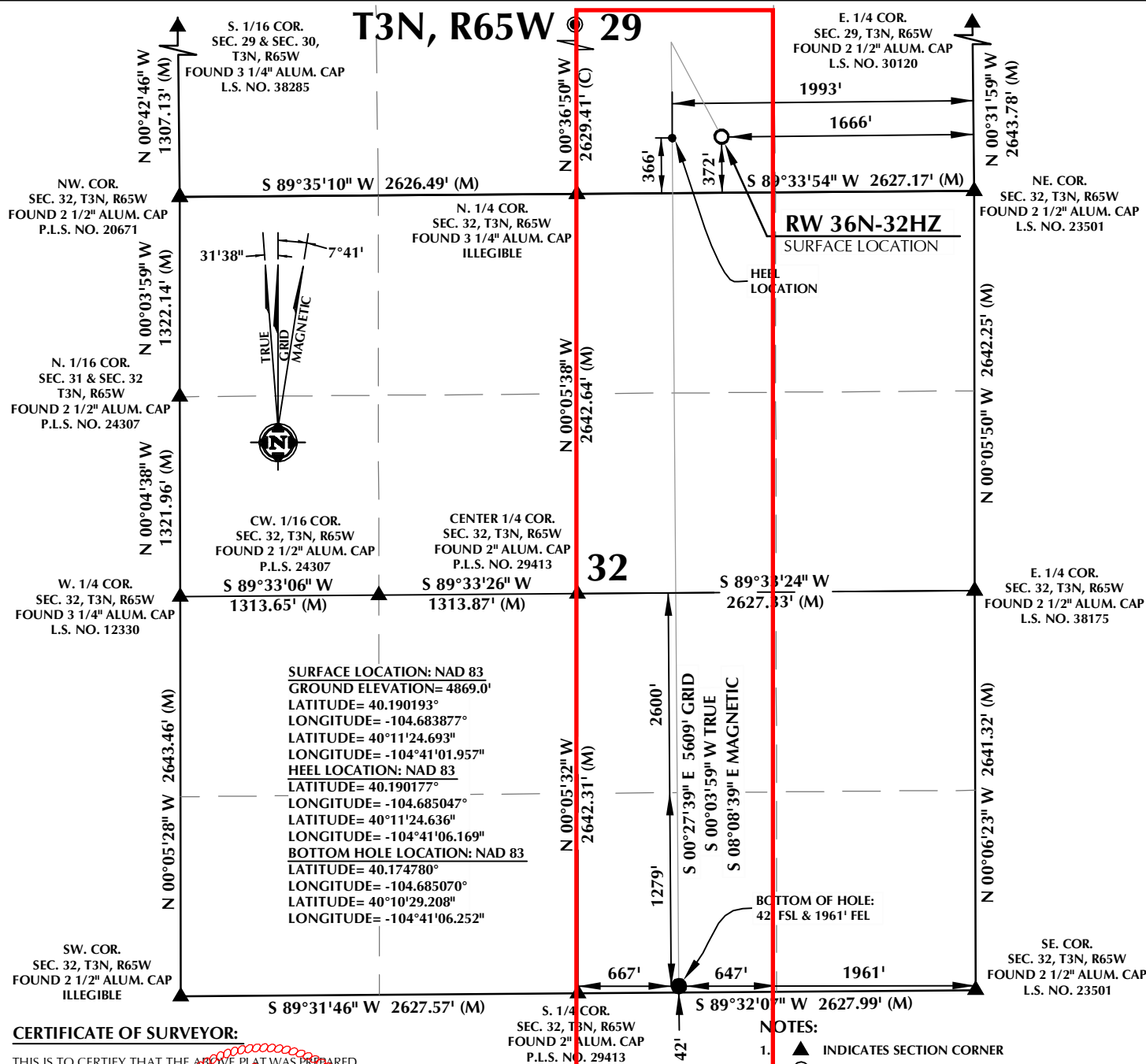
Sincerely,

Kerr-McGee Oil and Gas Onshore LP

A blue ink signature of Craig Richardson.

Craig Richardson
Regulatory Analyst II

Enclosure

**WELL PAD - RW 15N-32HZ**

RW 36N-32HZ
LOCATION CERTIFICATE
 372' FSL & 1666' FEL SWSE (SURFACE)
 366' FSL & 1993' FEL SWSE (HEEL)
 LOCATED IN SECTION 29
 42' FSL & 1961' FEL SWSE (BOTTOM)
 LOCATED IN SECTION 32
 T3N, R65W, 6TH P.M.
 WELD COUNTY, COLORADO

**Kerr-McGee Oil &
 Gas Onshore L.P.**
 1099 18th Street
 Denver, Colorado 80202

**CONSULTING, LLC**

SHERIDAN OFFICE
 1095 Saberton Avenue
 Sheridan, Wyoming 82801
 Phone 307-674-0609

LOVELAND OFFICE
 1635 Foxtrail Drive, Suite 204
 Loveland, Colorado 80538
 Phone 970-776-4331

DRAFTED BY:	LMO	CHECKED BY:	RKF
DATE DRAFTED:	12/20/16	DATE SURVEYED:	11/6/16
REVISED:		FILE NAME:	16-147