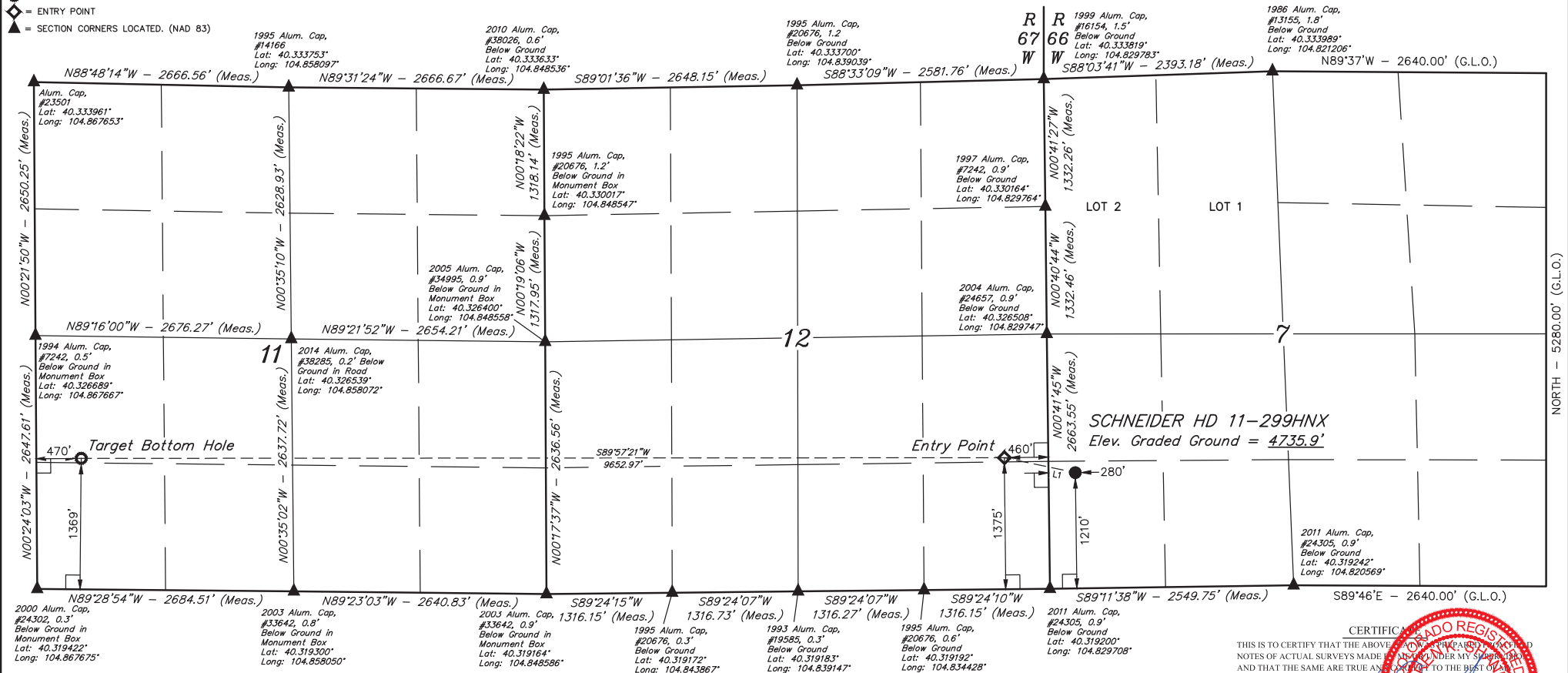


# LEGEND:

- = 90° SYMBOL
- = PROPOSED WELLHEAD.
- = TARGET BOTTOM HOLE.
- ◆ = ENTRY POINT
- ▲ = SECTION CORNERS LOCATED. (NAD 83)

T4N, R66W, 6th P.M.



## LINE TABLE

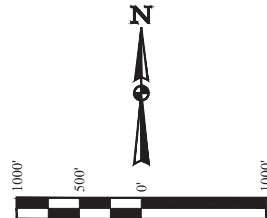
LINE	DIRECTION	LENGTH
L1	N78°07'32"W	758.17'

## BASIS OF BEARINGS

BASIS OF BEARINGS IS A G.P.S. OBSERVATION

## BASIS OF ELEVATION

USGS COOPERATIVE BASE NETWORK CONTROL STATION, DESIGNATION "VERMILYEA". NGS DATA SHEET LISTS THE NAVD 88 ELEVATION AS BEING 5026 FEET.



**UELS, LLC**  
Corporate Office \* 85 South 200 East  
Vernal, UT 84078 \* (435) 789-1017

NAD 83 (SURFACE LOCATION)	NAD 83 (ENTRY POINT)	NAD 83 (TARGET BOTTOM HOLE)
LATITUDE = 40°19'21.09" (40.322525)	LATITUDE = 40°19'22.69" (40.322969)	LATITUDE = 40°19'23.37" (40.323158)
LONGITUDE = 104°49'43.40" (104.828722)	LONGITUDE = 104°49'52.96" (104.831378)	LONGITUDE = 104°51'57.55" (104.865986)
NAD 27 (SURFACE LOCATION)	NAD 27 (ENTRY POINT)	NAD 27 (TARGET BOTTOM HOLE)
LATITUDE = 40°19'21.15" (40.322542)	LATITUDE = 40°19'22.75" (40.322986)	LATITUDE = 40°19'23.43" (40.323175)
LONGITUDE = 104°49'41.50" (104.828194)	LONGITUDE = 104°49'51.06" (104.830850)	LONGITUDE = 104°51'55.64" (104.865456)

PDOP=1.2

CERTIFICATE OF SURVEY  
THIS IS TO CERTIFY THAT THE ABOVE INFORMATION WAS OBTAINED FROM THE NOTES OF ACTUAL SURVEYS MADE BY ME OR UNDER MY SUPERVISION AND THAT THE SAME ARE TRUE AND CORRECT TO THE BEST OF MY KNOWLEDGE AND BELIEF.

REGISTERED LAND SURVEYOR  
REGISTRATION NO. 28285  
STATE OF COLORADO  
JUL 16 2016

REV: 1 11-16-16 K.B. (NAME, EP & TBH CHANGE)

## GREAT WESTERN OPERATING COMPANY

SCHNEIDER HD 11-299HNX  
SW 1/4 SW 1/4, SECTION 7, T4N, R66W, 6th P.M.  
WELD COUNTY, COLORADO

SURVEYED BY	GREG WEIMER, J.S.	05-27-16	SCALE
DRAWN BY	K.B.	05-31-16	1" = 1000'

## WELL LOCATION PLAT