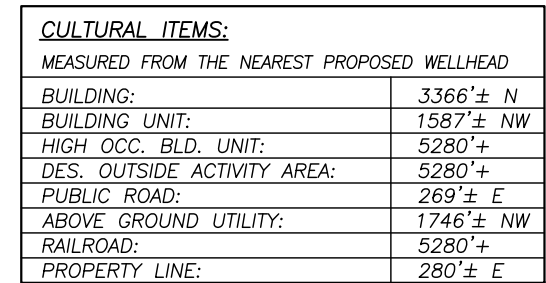


SECTION: 35
TOWNSHIP: 4N
RANGE: 65W



<u>IMPROVEMENTS</u>	
(MEASURED FROM PROPOSED CENTENNIAL STATE G34-G35 WELL LOCATION)	
1. WIRE FENCE:	0'± SW 253'± E 308'± E
2. ACCESS ROAD:	383'± NE
3. CATTLE GUARD:	438'± NE
4. GAS VALVE SET:	366± NE
5. COUNTY ROAD:	269'± E
6. PIVOT TRACK:	215'± SW 415'± SW
7. OIL/GAS WELL:	428± SW

