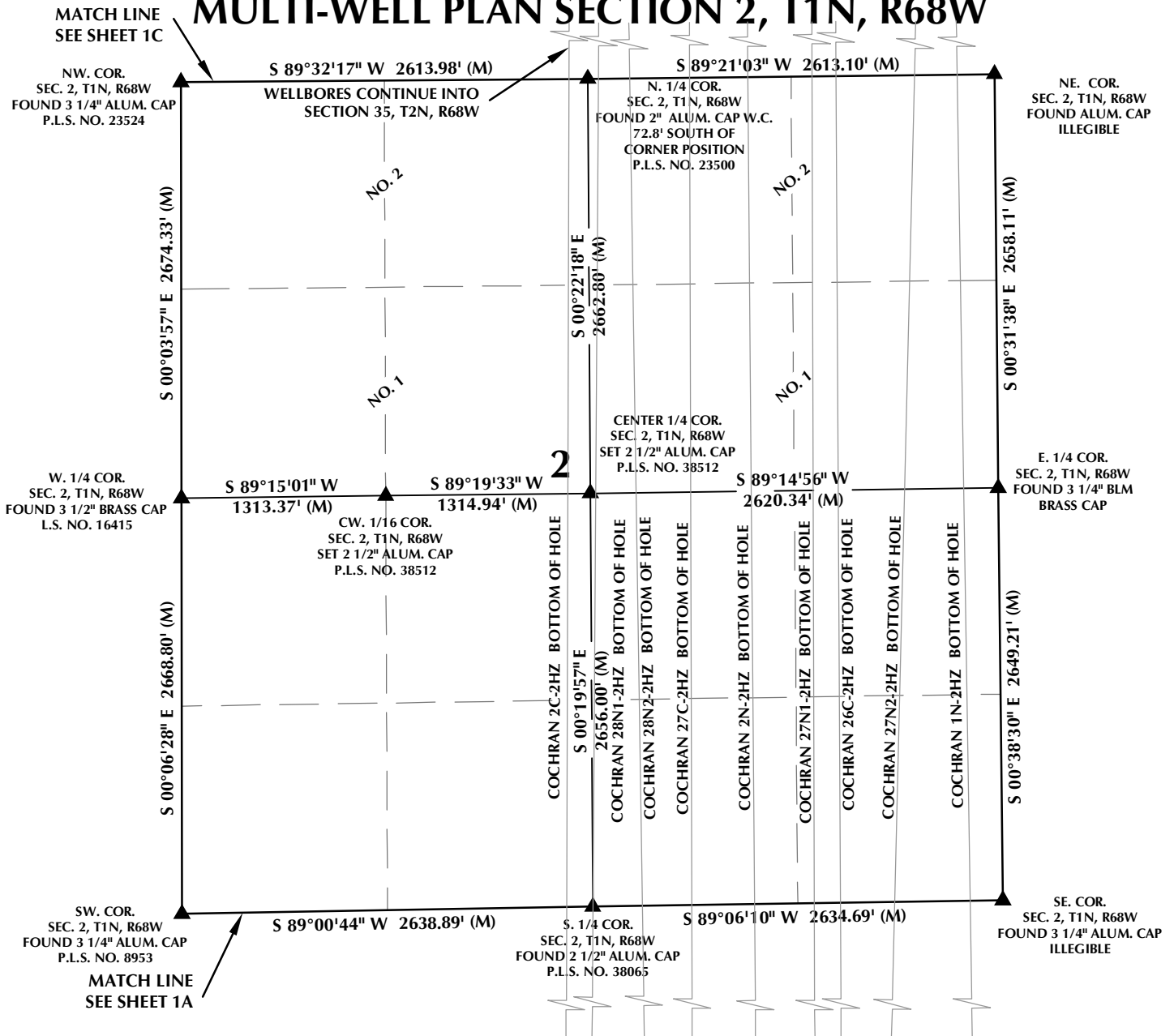


MULTI-WELL PLAN SECTION 2, T1N, R68W



WELL PAD - COCHRAN 2N-2HZ

MULTI-WELL PLAN
COCHRAN 2C-2HZ,
COCHRAN 28N1-2HZ, COCHRAN 28N2-2HZ,
COCHRAN 27C-2HZ, COCHRAN 2N-2HZ,
COCHRAN 27N1-2HZ, COCHRAN 26C-2HZ,
COCHRAN 27N2-2HZ & COCHRAN 1N-2HZ
LOCATED IN SECTIONS 2 & 11, T1N, R68W, 6TH P.M. &
LOCATED IN SECTION 35, T2N, R68W, 6TH P.M.
WELD COUNTY, COLORADO

**Kerr-McGee Oil &
Gas Onshore L.P.**

1099 18th Street
Denver, Colorado 80202



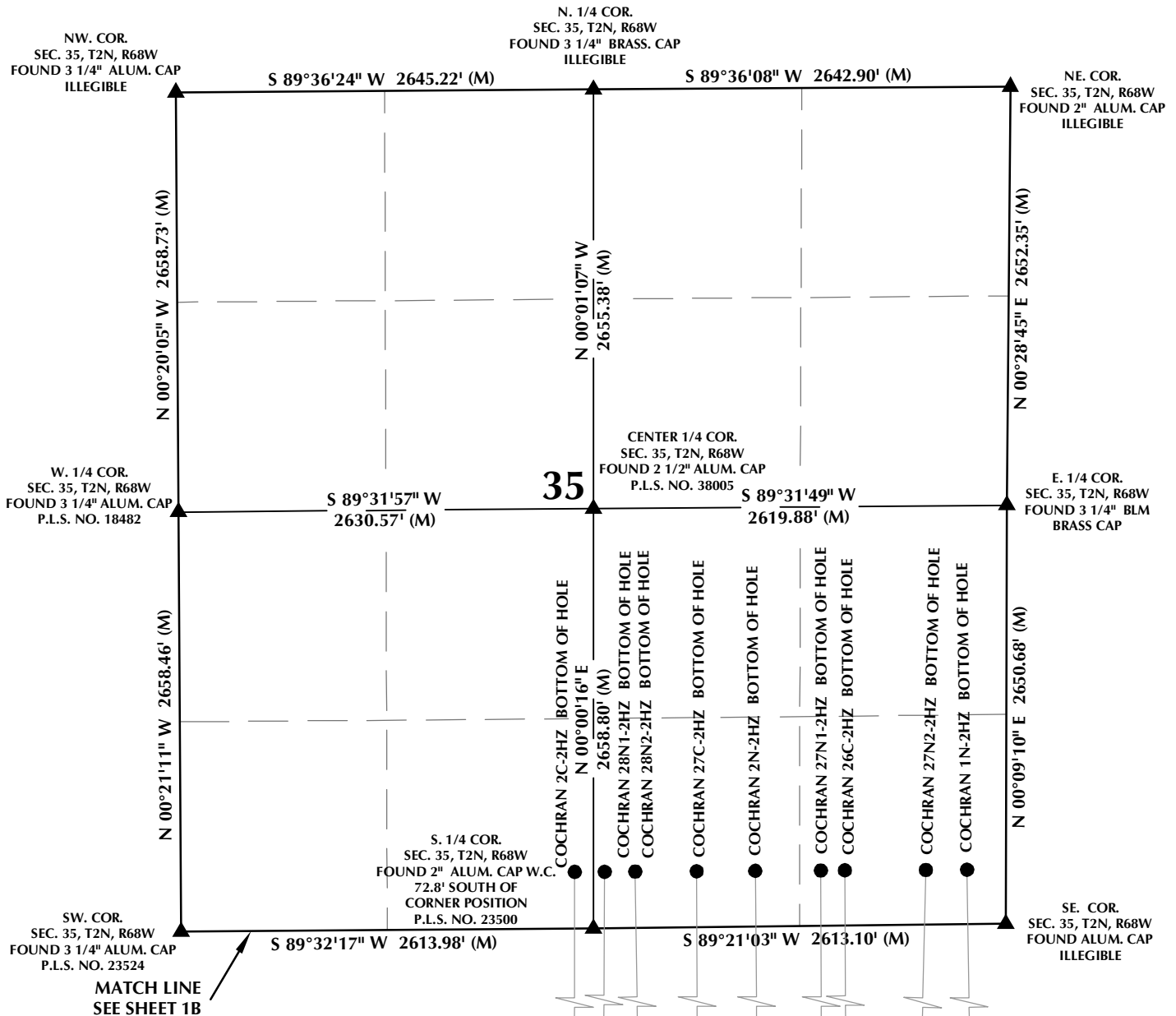
CONSULTING, LLC

SHERIDAN OFFICE
1095 Saberton Avenue
Sheridan, Wyoming 82801
Phone 307-674-0609

LOVELAND OFFICE
1635 Foxtrail Drive, Suite 204
Loveland, Colorado 80538
Phone 970-776-4331

DRAFTED BY:	LMO	CHECKED BY:	RKF	SHEET NO:
DATE DRAFTED:	2/7/17	DATE SURVEYED:	8/23/16	1B
REVISED:		FILE NAME:	16-56	1B OF 1

MULTI-WELL PLAN SECTION 35, T2N, R68W



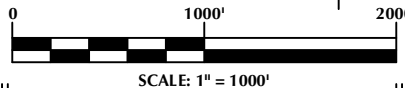
WELL NOTES:

COCHRAN 2C-2HZ
SURFACE: 2412' FNL, 1536' FEL, SEC. 11, T1N, R68W
BOTTOM HOLE: 358' FSL, 2497' FWL, SEC. 35, T2N, R68W
COCHRAN 28N1-2HZ
SURFACE: 2413' FNL, 1521' FEL, SEC. 11, T1N, R68W
BOTTOM HOLE: 358' FSL, 2543' FEL, SEC. 35, T2N, R68W
COCHRAN 28N2-2HZ
SURFACE: 2413' FNL, 1491' FEL, SEC. 11, T1N, R68W
BOTTOM HOLE: 357' FSL, 2349' FEL, SEC. 35, T2N, R68W
COCHRAN 27C-2HZ
SURFACE: 2413' FNL, 1476' FEL, SEC. 11, T1N, R68W
BOTTOM HOLE: 355' FSL, 1960' FEL, SEC. 35, T2N, R68W
COCHRAN 2N-2HZ
SURFACE: 2414' FNL, 1446' FEL, SEC. 11, T1N, R68W
BOTTOM HOLE: 352' FSL, 1587' FEL, SEC. 35, T2N, R68W
COCHRAN 27N1-2HZ
SURFACE: 2414' FNL, 1431' FEL, SEC. 11, T1N, R68W
BOTTOM HOLE: 350' FSL, 1173' FEL, SEC. 35, T2N, R68W

COCHRAN 26C-2HZ
SURFACE: 2414' FNL, 1401' FEL, SEC. 11, T1N, R68W
BOTTOM HOLE: 349' FSL, 1020' FEL, SEC. 35, T2N, R68W
COCHRAN 27N2-2HZ
SURFACE: 2415' FNL, 1386' FEL, SEC. 11, T1N, R68W
BOTTOM HOLE: 346' FSL, 506' FEL, SEC. 35, T2N, R68W
COCHRAN 1N-2HZ
SURFACE: 2415' FNL, 1356' FEL, SEC. 11, T1N, R68W
BOTTOM HOLE: 345' FSL, 245' FEL, SEC. 35, T2N, R68W

NOTES:

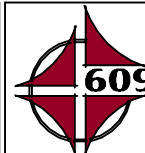
- ▲ INDICATES SECTION CORNER
- INDICATES CALCULATED CORNER
- BASIS OF BEARING DERIVED FROM COLORADO COORDINATE SYSTEM OF 1983 NORTH ZONE.
- ALL MEASURED DISTANCES ARE GRID.
- COMBINED SCALE FACTOR: .99972351 CALCULATED FROM THE W. 1/4 CORNER OF SECTION 11, T1N, R68W
- WELL FOOTAGES ARE MEASURED AT RIGHT ANGLES TO THE SECTION LINES.



WELL PAD - COCHRAN 2N-2HZ

MULTI-WELL PLAN
COCHRAN 2C-2HZ,
COCHRAN 28N1-2HZ, COCHRAN 28N2-2HZ,
COCHRAN 27C-2HZ, COCHRAN 2N-2HZ,
COCHRAN 27N1-2HZ, COCHRAN 26C-2HZ,
COCHRAN 27N2-2HZ & COCHRAN 1N-2HZ
LOCATED IN SECTIONS 2 & 11, T1N, R68W, 6TH P.M. &
LOCATED IN SECTION 35, T2N, R68W, 6TH P.M.
WELD COUNTY, COLORADO

**Kerr-McGee Oil &
Gas Onshore L.P.**
1099 18th Street
Denver, Colorado 80202



CONSULTING, LLC

SHERIDAN OFFICE
1095 Saberton Avenue
Sheridan, Wyoming 82801
Phone 307-674-0609

LOVELAND OFFICE
1635 Foxtrail Drive, Suite 204
Loveland, Colorado 80538
Phone 970-776-4331

DRAFTED BY:	LMO	CHECKED BY:	RKF	SHEET NO:
DATE DRAFTED:	2/7/17	DATE SURVEYED:	8/23/16	1C
REVISED:		FILE NAME:	16-56	1C OF 1