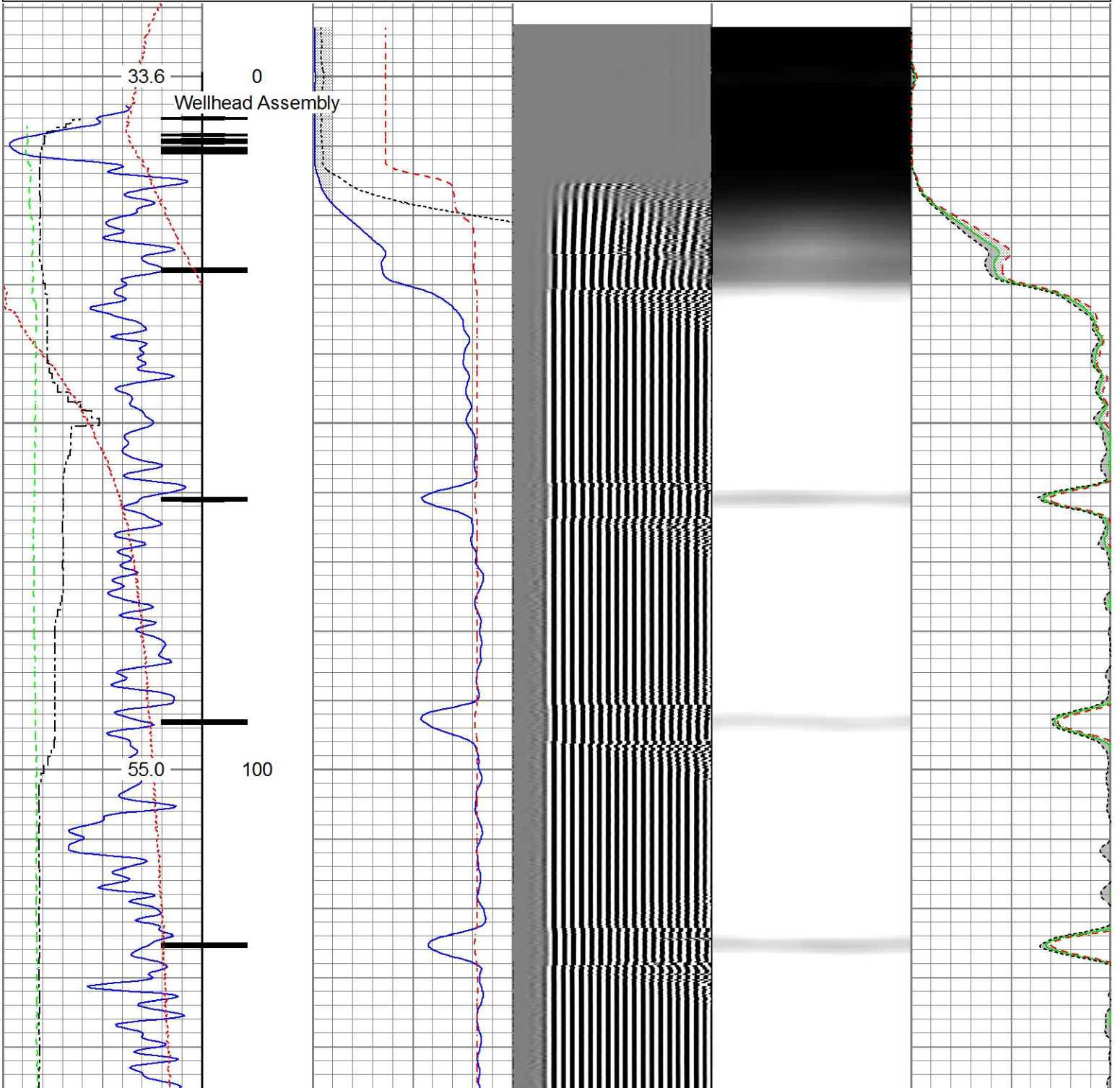
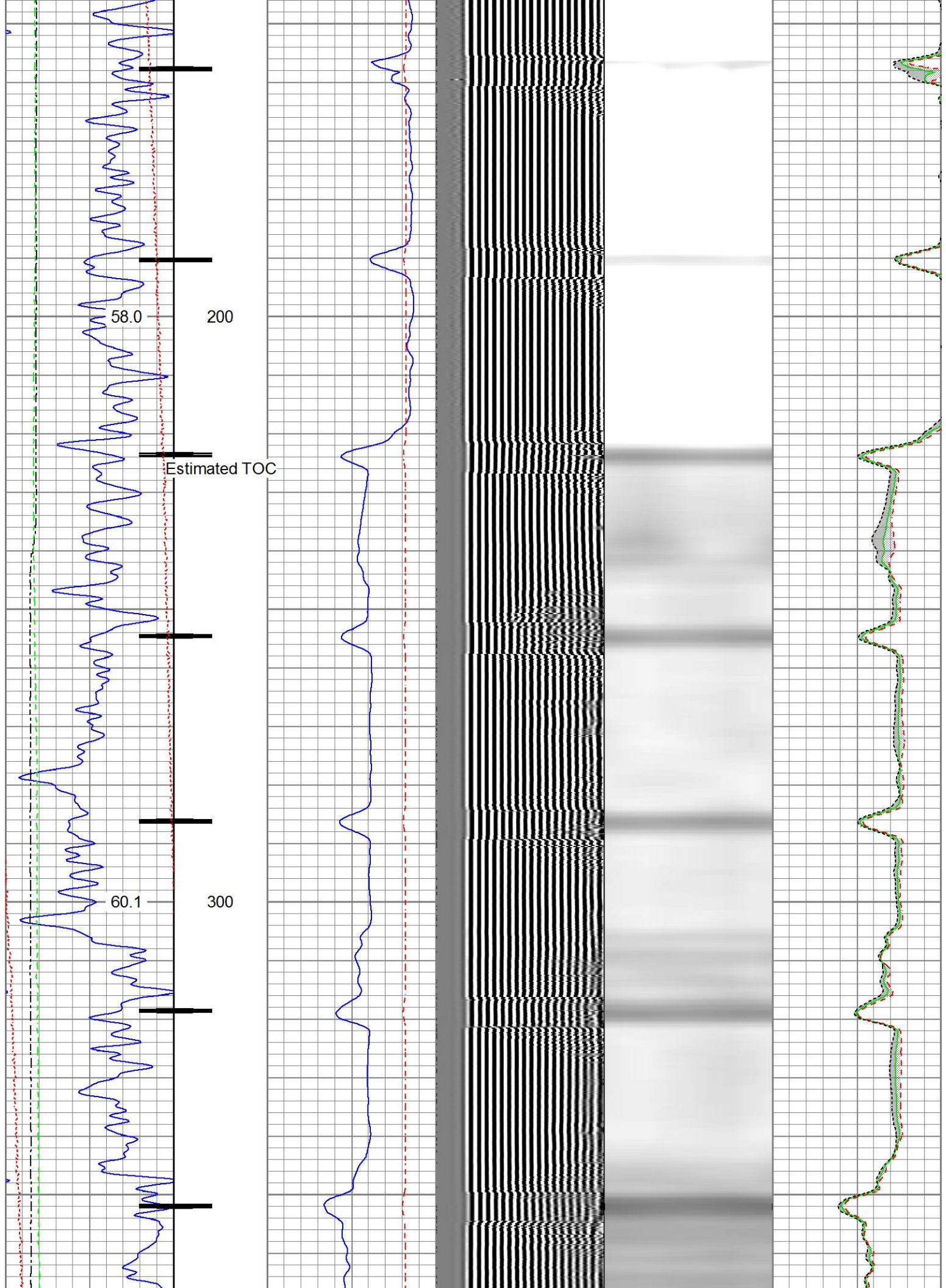


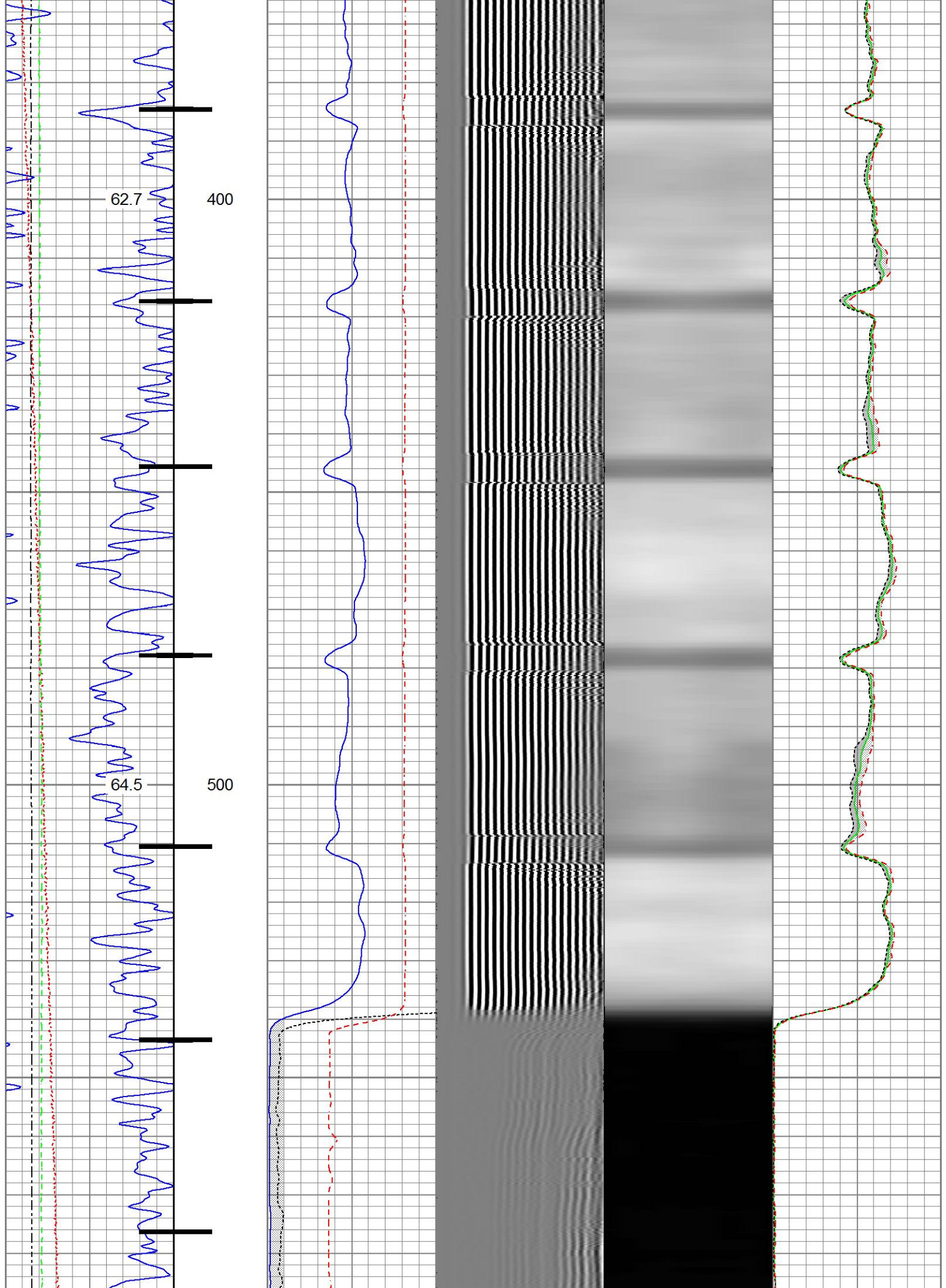


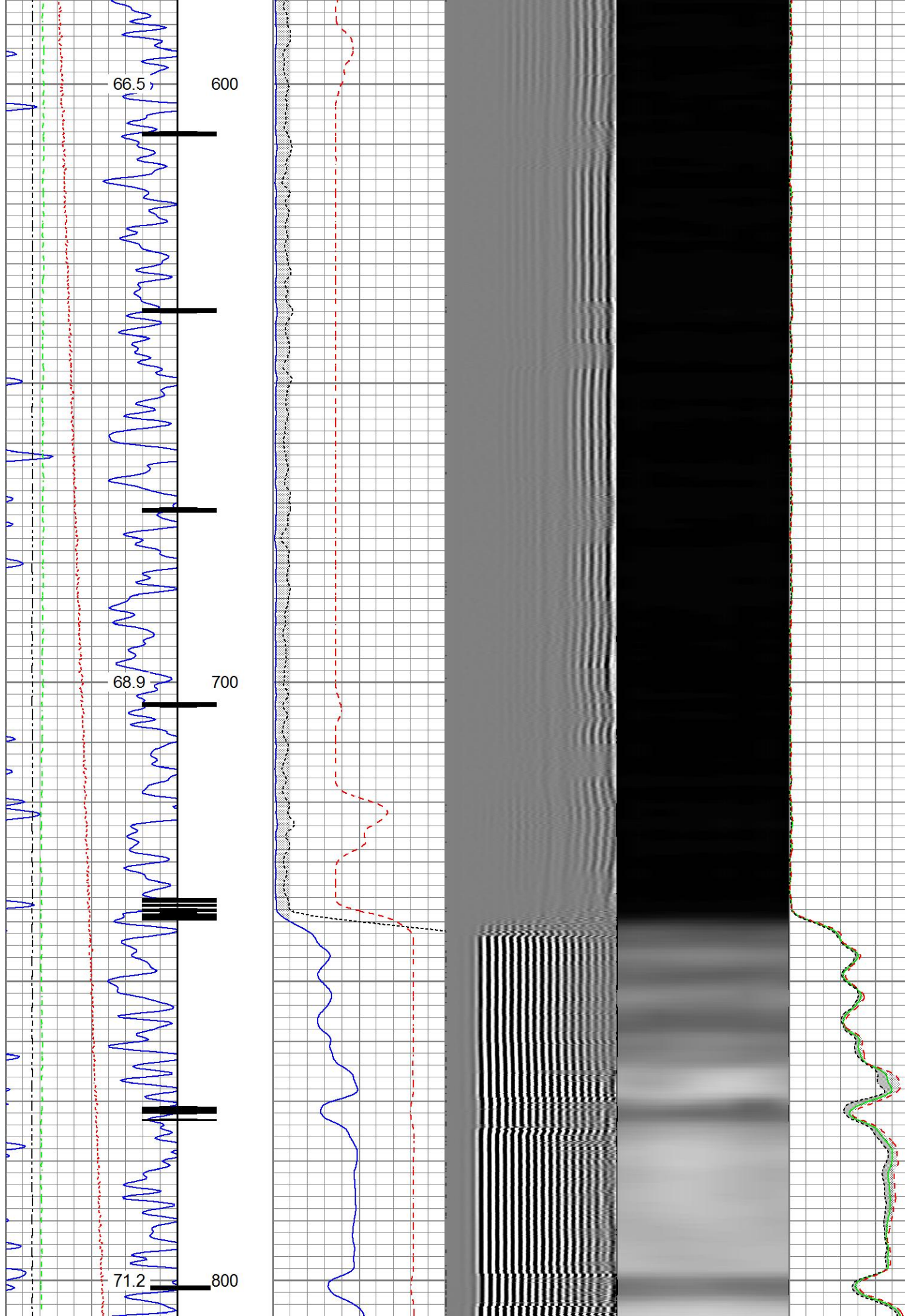
Database File anadarko\_clc gas unit 1\0212308230\_anadarko\_clc gas unit 1\_01-23-17\_rbl\_w8.db  
 Dataset Pathname pass7  
 Presentation Format ros\_radrii  
 Dataset Creation Mon Jan 23 07:25:00 2017  
 Charted by Depth in Feet scaled 1:240

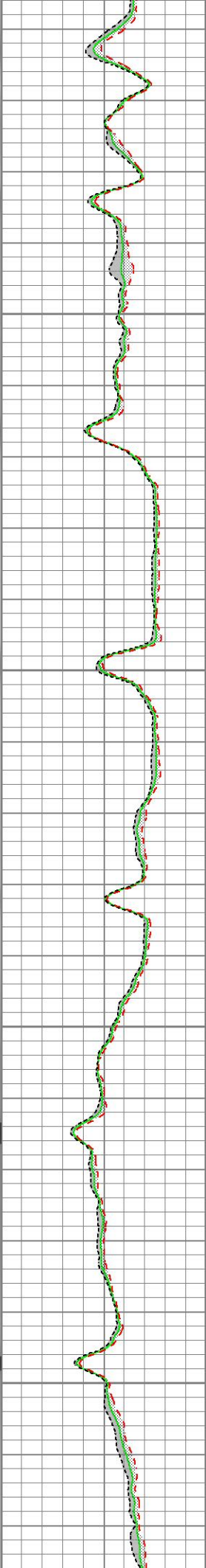
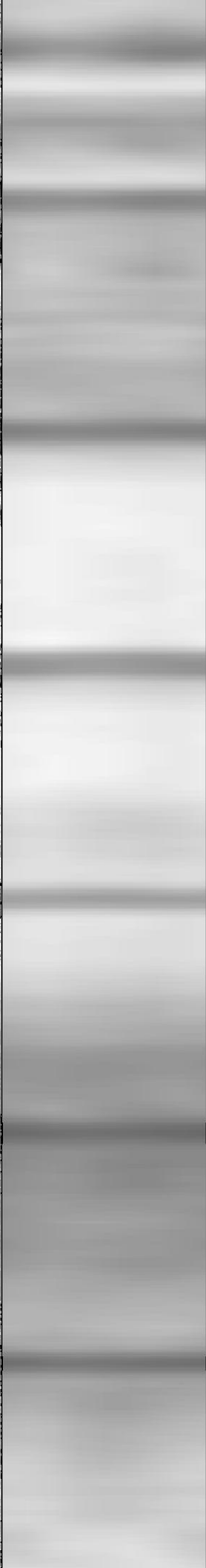
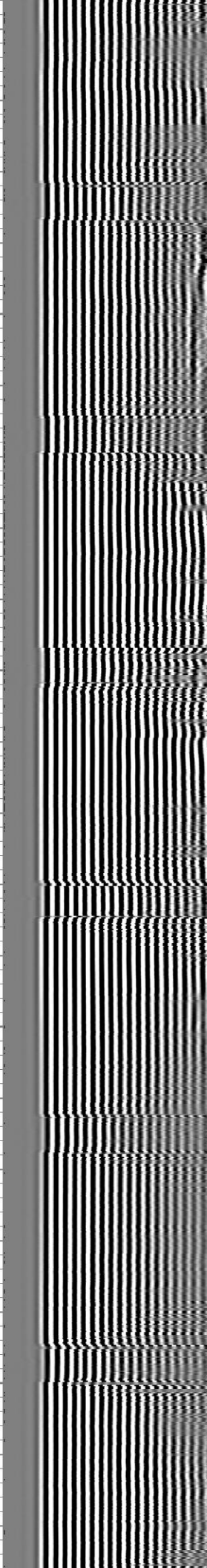
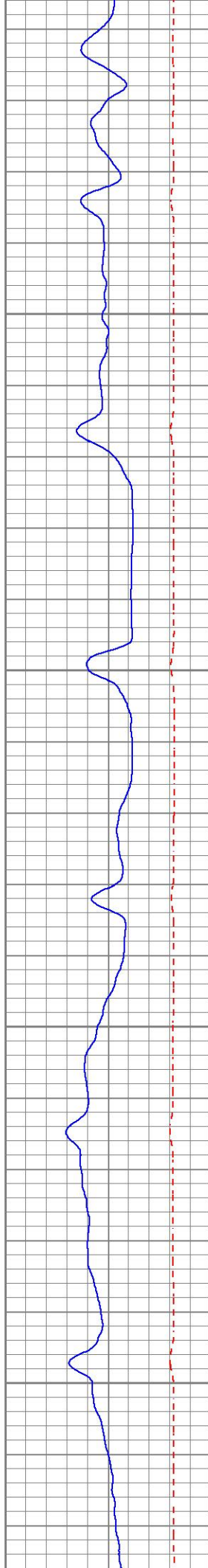
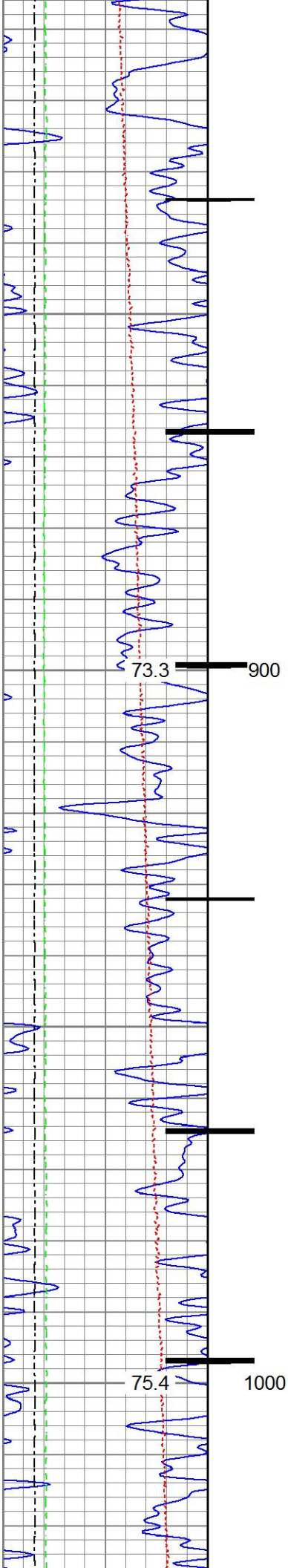
Gamma Ray 0 (GAPI) 120	3' Amplitude 0 (mV) 100	5' Variable Density Log 200 1200	Sector Map	Average Amplitude 0 100
Casing Collar Locator	3' Amplitude x 5 0 (mV) 20			Minimum Amplitude 0 100
Temperature 0 (degF) 20	3' Travel Time 650 (usec) 150			Maximum Amplitude 0 100
Line Speed -150 (ft/min) 150				
Line Tension 0 (lb) 2000				

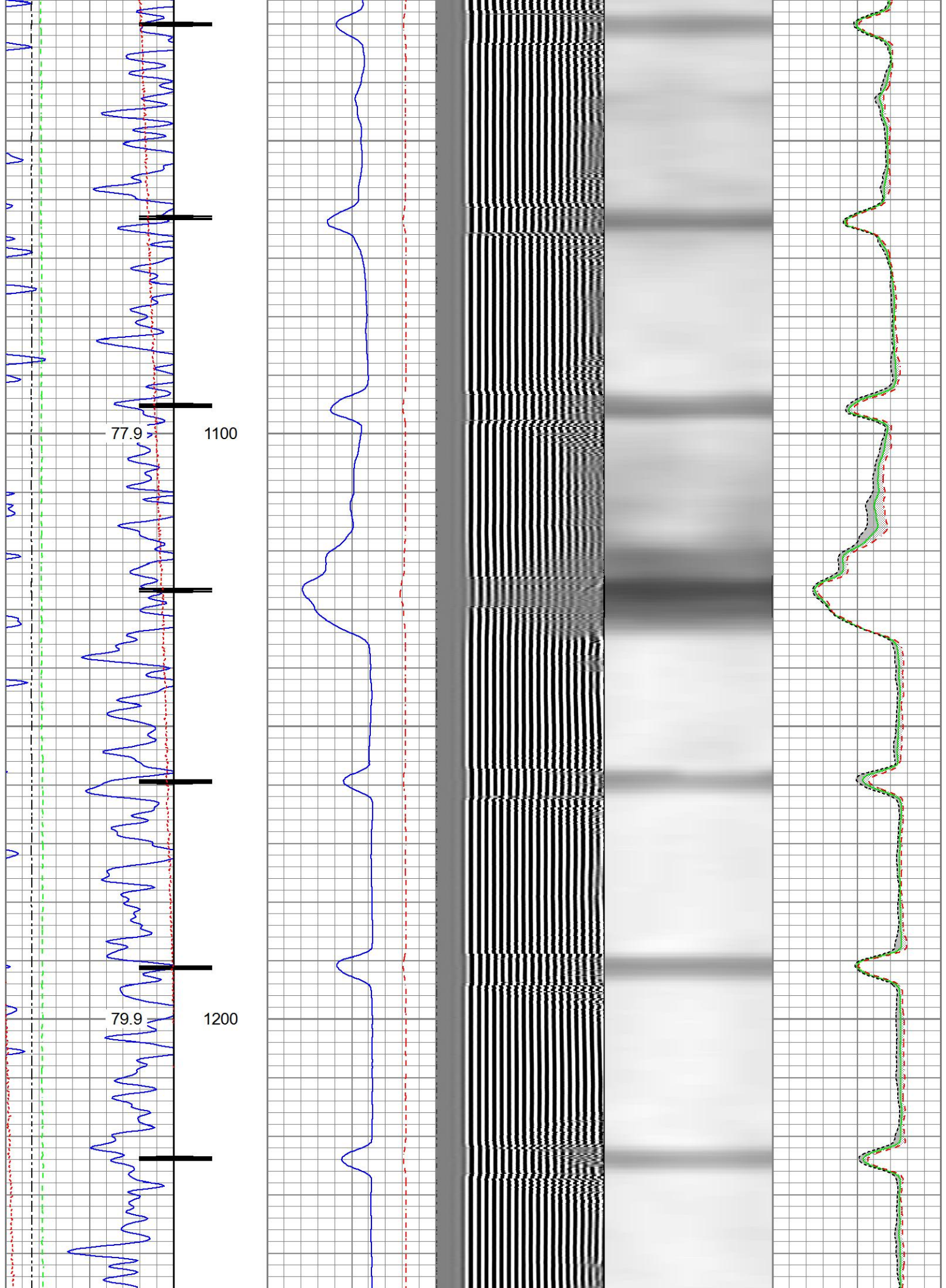


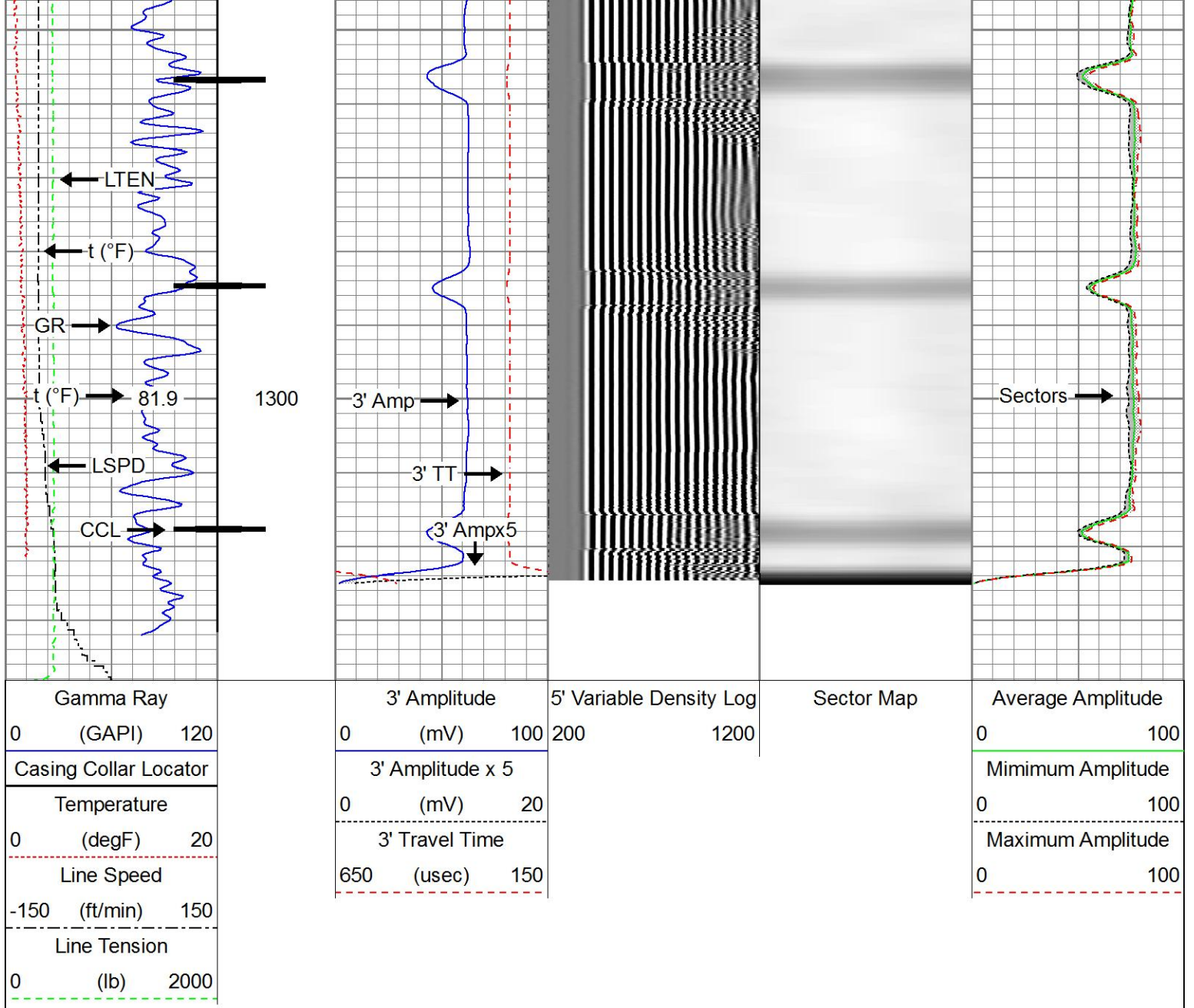








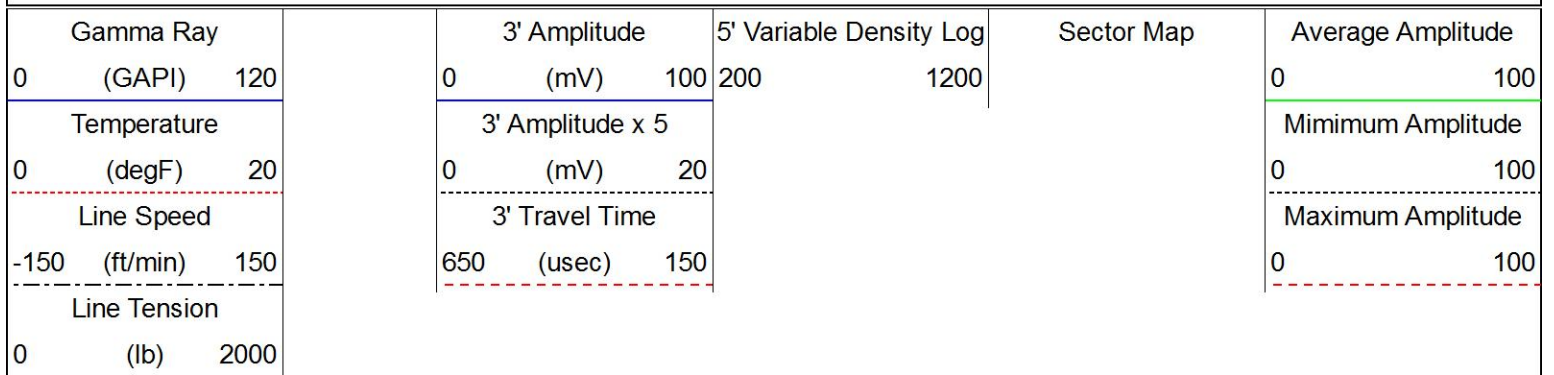


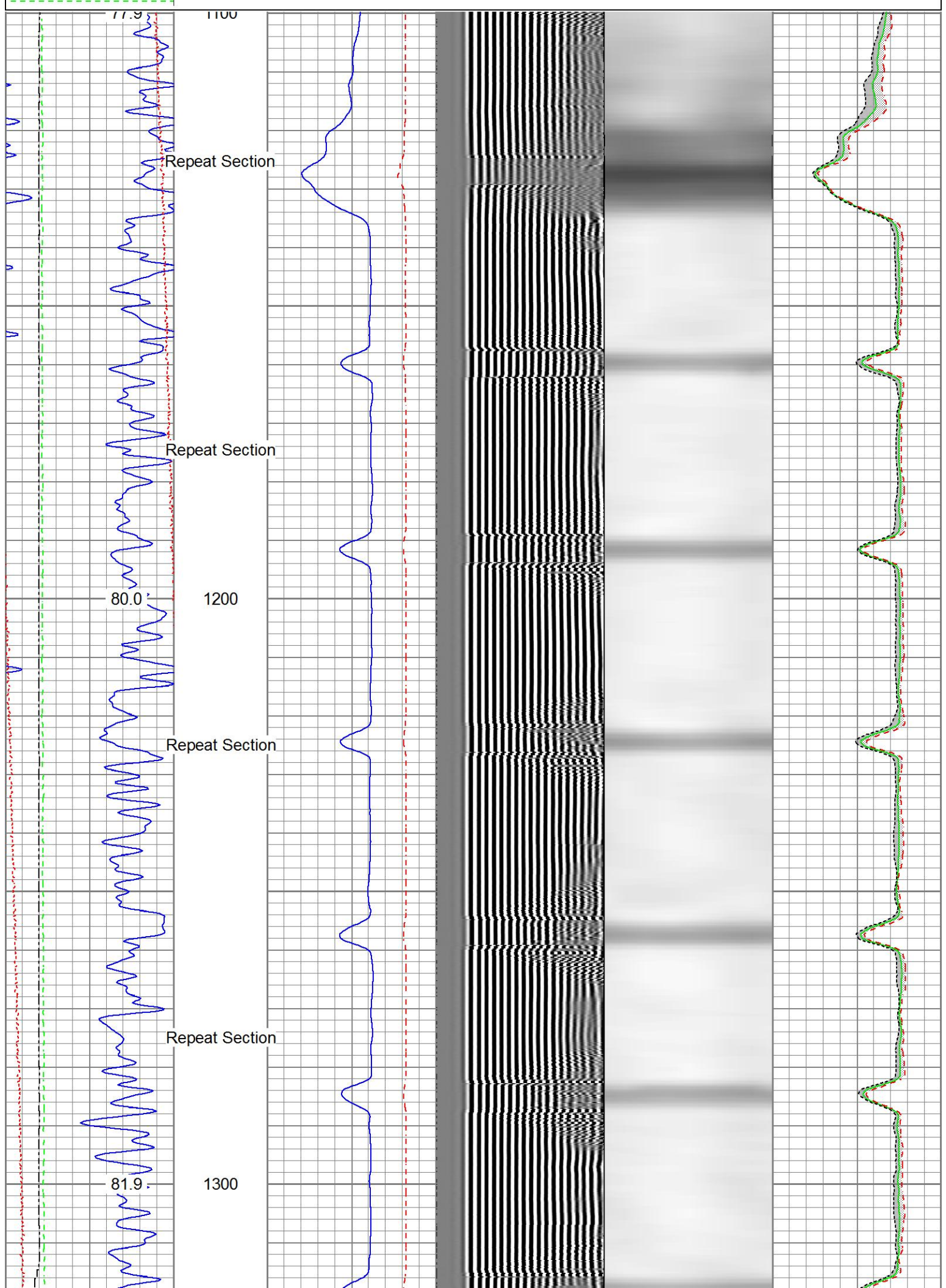


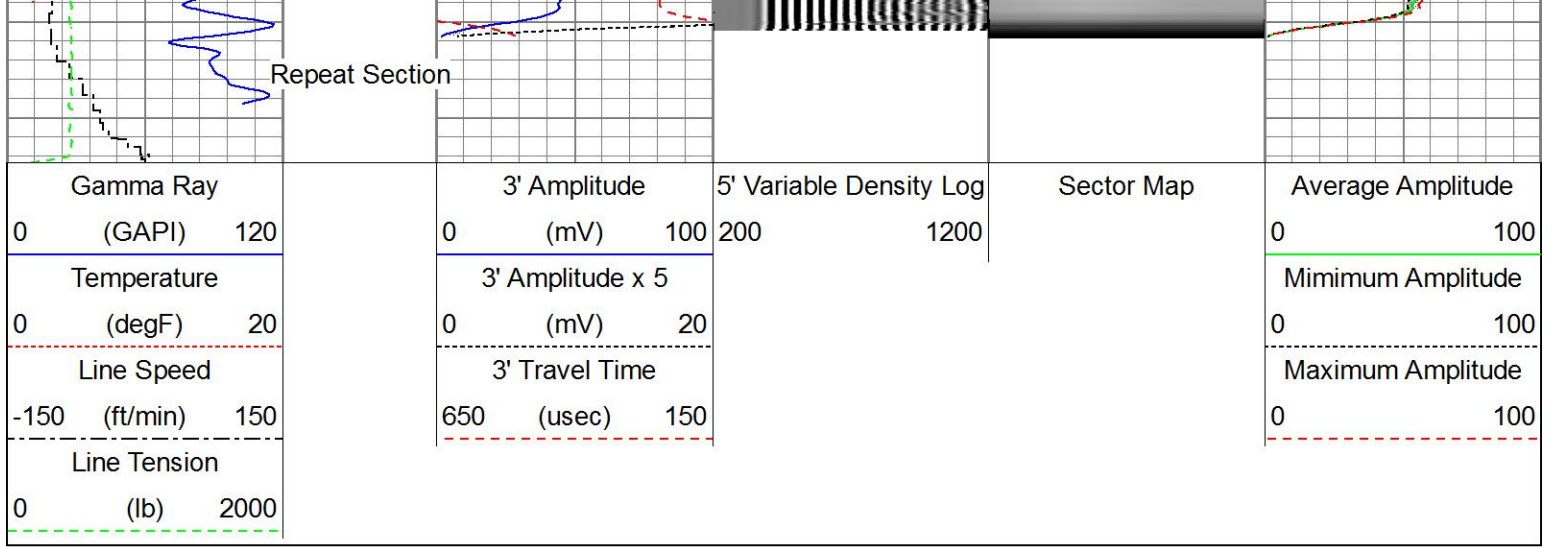
## Repeat Pass

Recorded With 0 PSI Surface Induced Pressure


Database File anadarko\_clc gas unit 1\0212308230\_anadarko\_clc gas unit 1\_01-23-17\_rbl\_w8.db  
 Dataset Pathname pass5  
 Presentation Format ros\_radrii  
 Dataset Creation Mon Jan 23 07:19:50 2017  
 Charted by Depth in Feet scaled 1:240







Sensor	Offset (ft)	Schematic	Description	Length (ft)	O.D. (in)	Weight (lb)		
			Titan_Electric_Cable_Heads-Titan_1-11/161.03 Electric Cable Head with 1" Fishing Neck		1.69	5.40		
			Probe_ELine_BowSpring_Centralizer-P-EE2.88.275 Probe 2-3/4" Electric Inline Bowspring Centralizer	EE2.88.275	2.75	20.00		
HeadVolt	19.51							
Temp	16.72							
WVFS8	14.55			Probe_RADII-C-P_RBT_2750 (FW1302-009.19) Probe 2-3/4" Sector Cement Bond Tool with Temperature Probe	009.19	2.75	105.00	
WVFS7	14.55							
WVFS6	14.55							
WVFS5	14.55							
WVFS4	14.55							
WVFS3	14.55							
WVFS2	14.55							
WVFS1	14.55							
WVFCAL	14.55							
WVF3FT	14.55							
WVF5FT	13.55							
HEADVOLT	10.30							
			Probe_ELine_BowSpring_Centralizer-P-EE2.88.275 Probe 2-3/4" Electric Inline Bowspring Centralizer	EE2.88.275	2.75	20.00		
DCCL	6.51							
CCL	6.51							
			Probe_CD_CCL_P_CCP_2750_0 (FW10114.512)		2.75	55.00		

GR	3.77		Probe_GR_CCL-P_CGR_2750_S (FW1214.545) Probe 2-3/4" Digital CCL / Gamma Ray Combined	2.75	55.00
			Probe_ELine_BowSpring_Centralizer-P Probe 2-3/4" Electric Inline Bowspring Centralizer	EE2.88,275	2.75
Dataset:		0212308230_Anadarko_CLC Gas Unit 1_01-23-17_RBL_w8.db: field/well/run1/pass7			
Total length:		23.40 ft			
Total weight:		225.40 lb			
O.D.:		2.75 in			

Calibration Report	
Database File	D:\Warrior\Data\Anadarko_CLC Gas Unit 1\0212308230_Anadarko_CLC Gas Unit 1_01-23-17_RBL_w8.db
Dataset Pathname	pass7
Dataset Creation	Mon Jan 23 07:25:00 2017

Gamma Ray Calibration Report		
Serial Number:	FW1212-026	
Tool Model:	P_CGR_2750_S	
Performed:	Mon Jun 13 11:30:22 2016	
Calibrator Value:	1.0	GAPI
Background Reading:	0.0	cps
Calibrator Reading:	1.6	cps
Sensitivity:	0.8500	GAPI/cps

Segmented Cement Bond Log Calibration Report		
Serial Number:	FW1302-002	
Tool Model:	P_RBT_2750	
Calibration Casing Diameter:	4.500	in
Calibration Depth:	164.630	ft

Master Calibration, performed Mon Jan 23 07:05:29 2017:						
	Raw (v)		Calibrated (mv)		Results	
	Zero	Cal	Zero	Cal	Gain	Offset
3'	0.004	0.629	0.800	81.196	128.596	0.332
CAL	0.004	0.721				
5'	0.004	0.540	0.800	81.196	149.887	0.251
SUM						
S1	0.004	0.663	0.000	100.000	151.684	-0.555
S2	0.004	0.630	0.000	100.000	159.704	-0.591
S3	0.004	0.602	0.000	100.000	167.058	-0.612
S4	0.004	0.599	0.000	100.000	167.993	-0.619
S5	0.004	0.618	0.000	100.000	162.889	-0.599
S6	0.004	0.646	0.000	100.000	155.780	-0.574
S7	0.004	0.664	0.000	100.000	151.387	-0.558
S8	0.004	0.677	0.000	100.000	148.411	-0.545

Internal Reference Calibration, performed (Not Performed):

	Raw (v)		Calibrated (v)		Results	
	Zero	Cal	Zero	Cal	Gain	Offset
CAL	0.000	0.000	0.004	0.721	1.000	0.000

Air Zero Calibration, performed Mon Jan 23 07:05:52 2017:

	Raw (v)		Calibrated (v)		Results	
	Zero		Zero		Offset	
3'	0.004		0.000		-0.000	
5'	0.004		0.000		-0.000	
SUM						
S1	0.004		0.000		-0.000	
S2	0.004		0.000		0.000	
S3	0.004		0.000		0.000	
S4	0.004		0.000		0.000	
S5	0.004		0.000		0.000	
S6	0.004		0.000		0.000	
S7	0.004		0.000		0.000	
S8	0.004		0.000		0.000	



Company Kerr-McGee Oil & Gas Onshore, L.P.  
 Well CLC Gas Unit 1  
 Field Wattenberg  
 County Weld  
 State Colorado