

T4S, R65W, 6th P.M.

ConocoPhillips Company

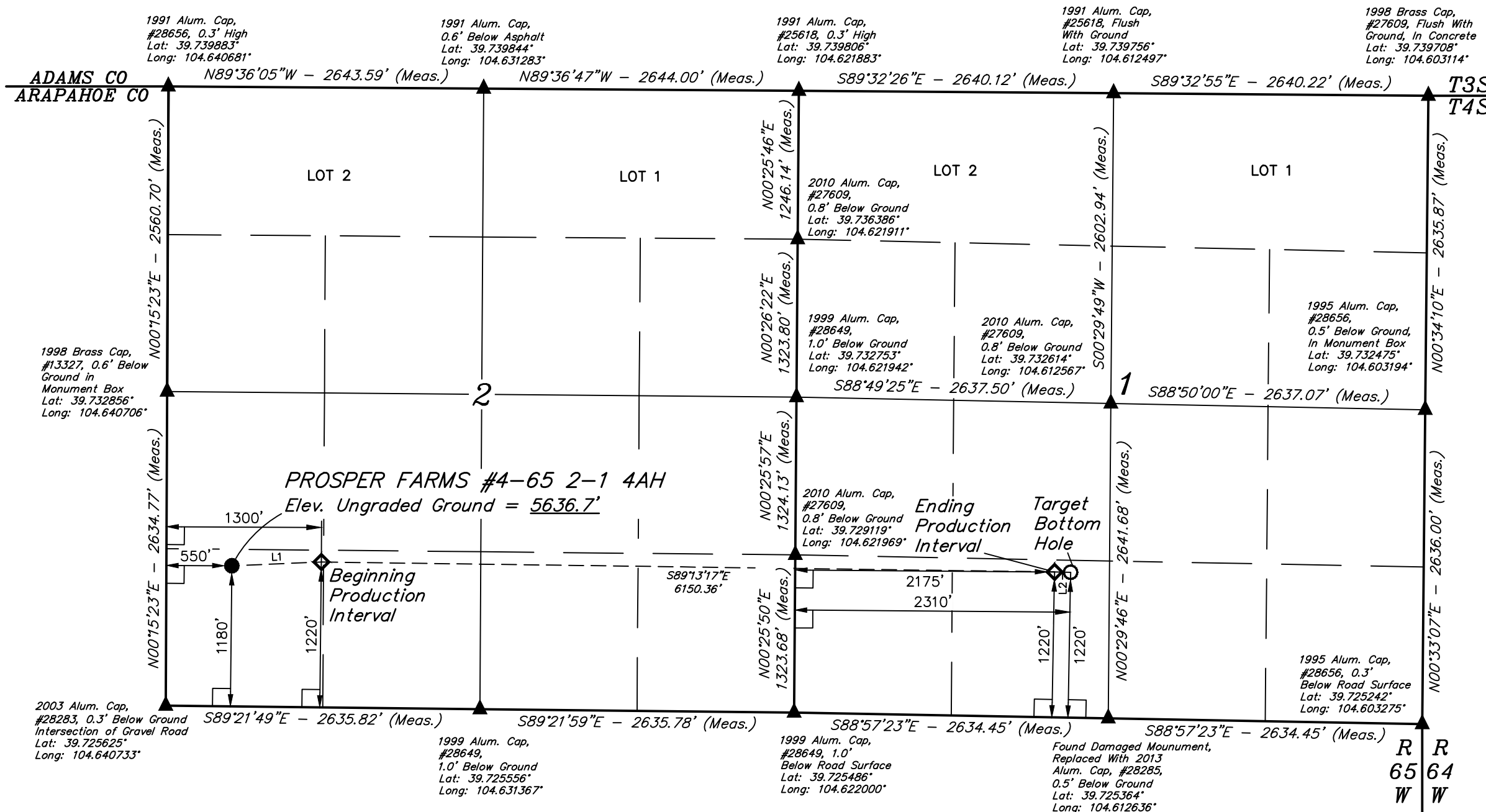
PROSPER FARMS #4-65 2-1 4AH
SW 1/4 SW 1/4, SECTION 2, T4S, R65W, 6th P.M.
ARAPAHOE COUNTY, COLORADO

BASIS OF BEARINGS

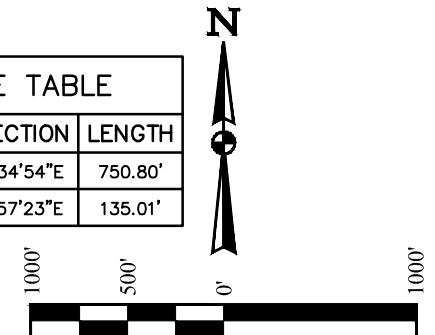
BASIS OF BEARINGS IS A G.P.S. OBSERVATION

BASIS OF ELEVATION

BENCHMARK 374 LOCATED ON THE SECTION LINE BETWEEN
SECTIONS 12 & 13, T5S, R64W, 6th. P.M., TAKEN FROM 1988
PUBLISHED DATUM BY THE UNITED STATES DEPARTMENT OF
THE INTERIOR, GEOLOGICAL SURVEY AS BEING 6054.61 FEET.



LINE TABLE		
LINE	DIRECTION	LENGTH
L1	N87°34'54"E	750.80'
L2	S88°57'23"E	135.01'








CERTIFICATE
 THAT THE ABOVE STATEMENT WAS PREPARED FROM FIELD
 SURVEYS MADE BY ME OR UNDER MY SUPERVISION
 AND ARE TRUE AND ACCURATE TO THE BEST OF MY
 KNOWLEDGE.

REGISTERED LAND SURVEYOR
REGISTRATION NO. 28285
STATE OF COLORADO

REV: 2 02-23-17 K.B. (DIMENSION FOR EPI & TBH CHANGE)

PDOP = 1.3

LEGEND:

-  = 90° SYMBOL
 = PROPOSED WELLHEAD.
 = TARGET BOTTOM HOLE.
 = SECTION CORNERS LOCATED.
 = PRODUCTION INTERVAL.

NAD 83 (TARGET BOTTOM HOLE)	NAD 83 (ENDING PRODUCTION INTERVAL)	NAD 83 (BEGINNING PRODUCTION INTERVAL)	NAD 83 (SURFACE LOCATION)
LATITUDE = 39°43'43.42" (39.728728)	LATITUDE = 39°43'43.44" (39.728733)	LATITUDE = 39°43'44.18" (39.728939)	LATITUDE = 39°43'43.86" (39.728850)
LONGITUDE = 104°36'49.54" (104.613761)	LONGITUDE = 104°36'51.27" (104.614242)	LONGITUDE = 104°38'09.96" (104.636100)	LONGITUDE = 104°38'19.56" (104.638767)
NAD 27 (TARGET BOTTOM HOLE)	NAD 27 (ENDING PRODUCTION INTERVAL)	NAD 27 (BEGINNING PRODUCTION INTERVAL)	NAD 27 (SURFACE LOCATION)
LATITUDE = 39°43'43.46" (39.728739)	LATITUDE = 39°43'43.49" (39.728747)	LATITUDE = 39°43'44.23" (39.728953)	LATITUDE = 39°43'43.91" (39.728864)
LONGITUDE = 104°36'47.66" (104.613239)	LONGITUDE = 104°36'49.39" (104.613719)	LONGITUDE = 104°38'08.08" (104.635578)	LONGITUDE = 104°38'17.68" (104.638244)
STATE PLANE NAD 83 (CO. CEN.)	STATE PLANE NAD 83 (CO. CEN.)	STATE PLANE NAD 83 (CO. CEN.)	STATE PLANE NAD 83 (CO. CEN.)
N: 1691534.23 E: 3249265.76	N: 1691535.20 E: 3249130.79	N: 1691551.13 E: 3242982.21	N: 1691511.21 E: 3242232.69
STATE PLANE NAD 27 (CO. CEN.)	STATE PLANE NAD 27 (CO. CEN.)	STATE PLANE NAD 27 (CO. CEN.)	STATE PLANE NAD 27 (CO. CEN.)
N: 691526.65 E: 2249419.20	N: 691527.62 E: 2249284.23	N: 691543.45 E: 2243135.71	N: 691503.52 E: 2242386.19



UELS, LLC
Corporate Office * 85 South 200 East
Vernal, UT 84078 * (435) 789-1017

SURVEYED BY: DALLAS NIELSEN, B.C.	DATE: 06-11-15
DRAWN BY: K.B.	DATE DRAWN: 06-30-15
SCALE: 1" = 1000'	

WELL LOCATION PLAT