

LEGEND

- ◆ ~ FOUND ORIGINAL STONE
- ~ FOUND GLO BRASS CAP ON STEEL POST
- ⊕ ~ FOUND REBAR AND CAP BY LS15710
- ~ FOUND No.6 REBAR WITH A 2 1/2" ALUMINUM CAP, LS24963
- ~ WELL FEATURE
- (M) ~ MEASURED IN FIELD
- L ~ 90° SYMBOL
- WC ~ WITNESS CORNER

BASIS OF BEARING:

THE LINE FROM THE E 1/4 CORNER TO THE NE CORNER OF SECTION 9, TOWNSHIP 11 SOUTH, RANGE 90 WEST, 6TH P.M., WAS ASSUMED TO BEAR N. 0°07'30" W. AS MONUMENTED AND SHOWN HEREON.

CERTIFICATE OF SURVEY:

I, David G. Nicewicz, a Registered Land Surveyor in the State of Colorado, do hereby certify that the survey represented by this plat was made under my direction and supervision, and that this plat accurately represents this survey.

David G. Nicewicz P.L.S. No. 24963
(for and on behalf of AECOM)

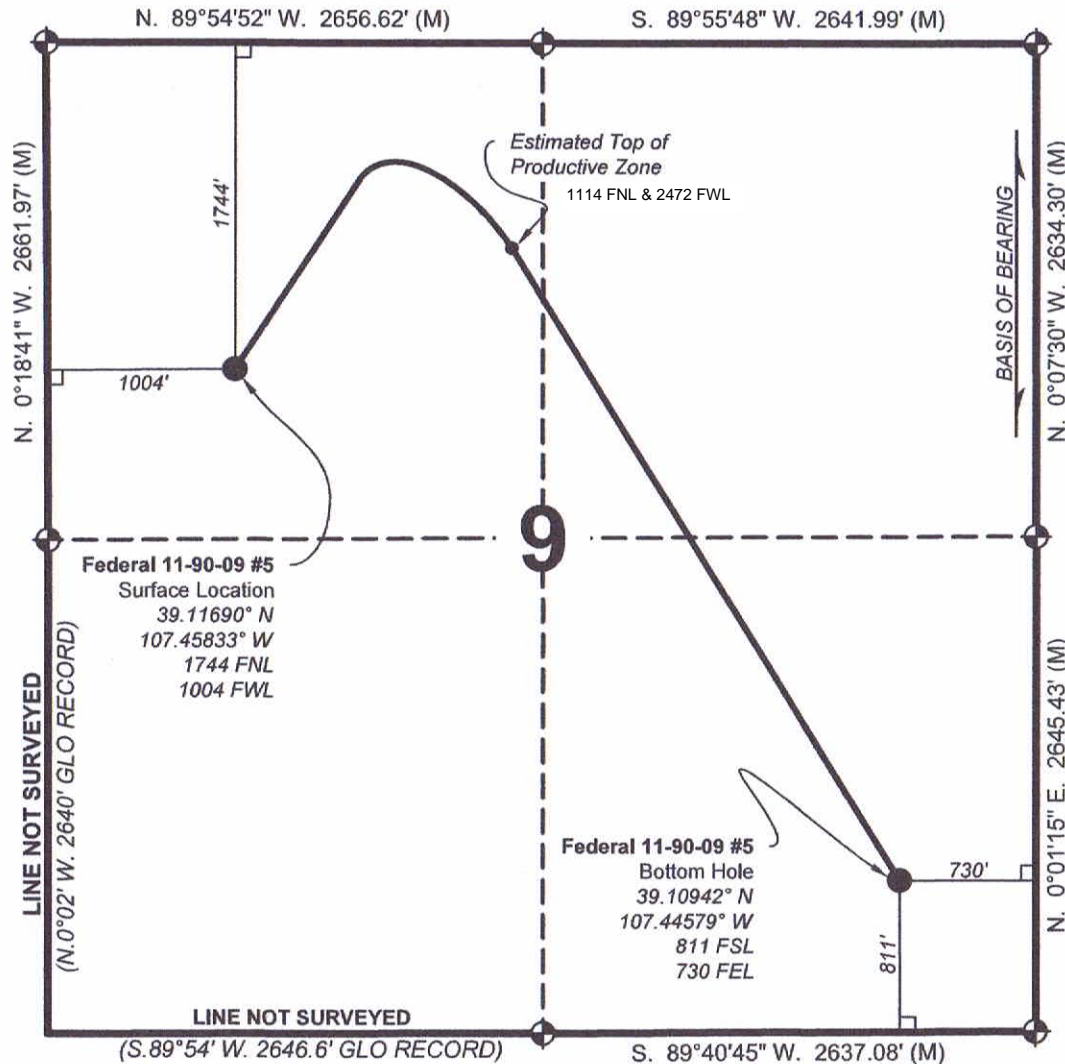


AECOM OF GLENWOOD SPRINGS COLORADO, has in accordance with a request from ERIC SANFORD, for SG INTERESTS I, LTD, determined the location of **FEDERAL 11-90-09 #5 SURFACE LOCATION** to be 1744 FNL & 1004 FWL in Section 9, Township 11 South, Range 90 West, of the Sixth Principal Meridian, Gunnison County, Colorado.

GAS WELL LOCATION PLAT

FEDERAL 11-90-09 #5 SURFACE LOCATION
Located in the NW 1/4 of Section 9,
Township 11 South, Range 90 West, 6th P.M.,
Gunnison County, Colorado

SURVEYED BY: DGN	DWG DATE: 06/05/2015	David G. Nicewicz, PLS	
DRAFTED BY: MLD	SCALE: 1" = 1000'	cell: (720) 456-1104 david.nicewicz@urs.com	AECOM 804 Colorado Ave, Suite 201 Glenwood Springs Co 81610
JOB NO.: 22244264.50900	SHEET NO. 1 of 1		



LEGEND

- ~ FOUND ORIGINAL STONE
- ~ FOUND GLO BRASS CAP ON STEEL POST
- ~ FOUND REBAR AND CAP BY LS15710
- ~ FOUND No.6 REBAR WITH A 2 1/2" ALUMINUM CAP, LS24963
- ~ WELL FEATURE
- (M) ~ MEASURED IN FIELD
- L ~ 90° SYMBOL
- WC ~ WITNESS CORNER

BASIS OF BEARING:

THE LINE FROM THE E 1/4 CORNER TO THE NE CORNER OF SECTION 9, TOWNSHIP 11 SOUTH, RANGE 90 WEST, 6TH P.M., WAS ASSUMED TO BEAR N. 0°07'30" W. AS MONUMENTED AND SHOWN HEREON.

CERTIFICATE OF SURVEY:

I, David G. Nicewicz, a Registered Land Surveyor in the State of Colorado, do hereby certify that the survey represented by this plat was made under my direction and supervision, and that this plat accurately represents this survey.

David G. Nicewicz P.L.S. No. 24963
(for and on behalf of AECOM)



GAS WELL LOCATION PLAT

FEDERAL 11-90-09 #5 BOTTOM HOLE
Located in the SE 1/4 of Section 9,
Township 11 South, Range 90 West, 6th P.M.,
Gunnison County, Colorado

SURVEYED BY: DGN	DWG DATE: 02/12/15	David G. Nicewicz, PLS cell: (720) 456-1104 david.nicewicz@urs.com AECOM 804 Colorado Ave, Suite 201 Glenwood Springs Co 81610	
DRAFTED BY: MLD	SCALE: 1" = 1000'		
JOB NO.: 22244264.50900		SHEET NO. 1 of 1	

AECOM OF GLENWOOD SPRINGS COLORADO, has in accordance with a request from ERIC SANFORD, for SG INTERESTS I, LTD, determined the location of FEDERAL 11-90-09 #5 BOTTOM HOLE to be 811 FSL & 730 FEL in Section 9, Township 11 South, Range 90 West, of the Sixth Principal Meridian, Gunnison County, Colorado.