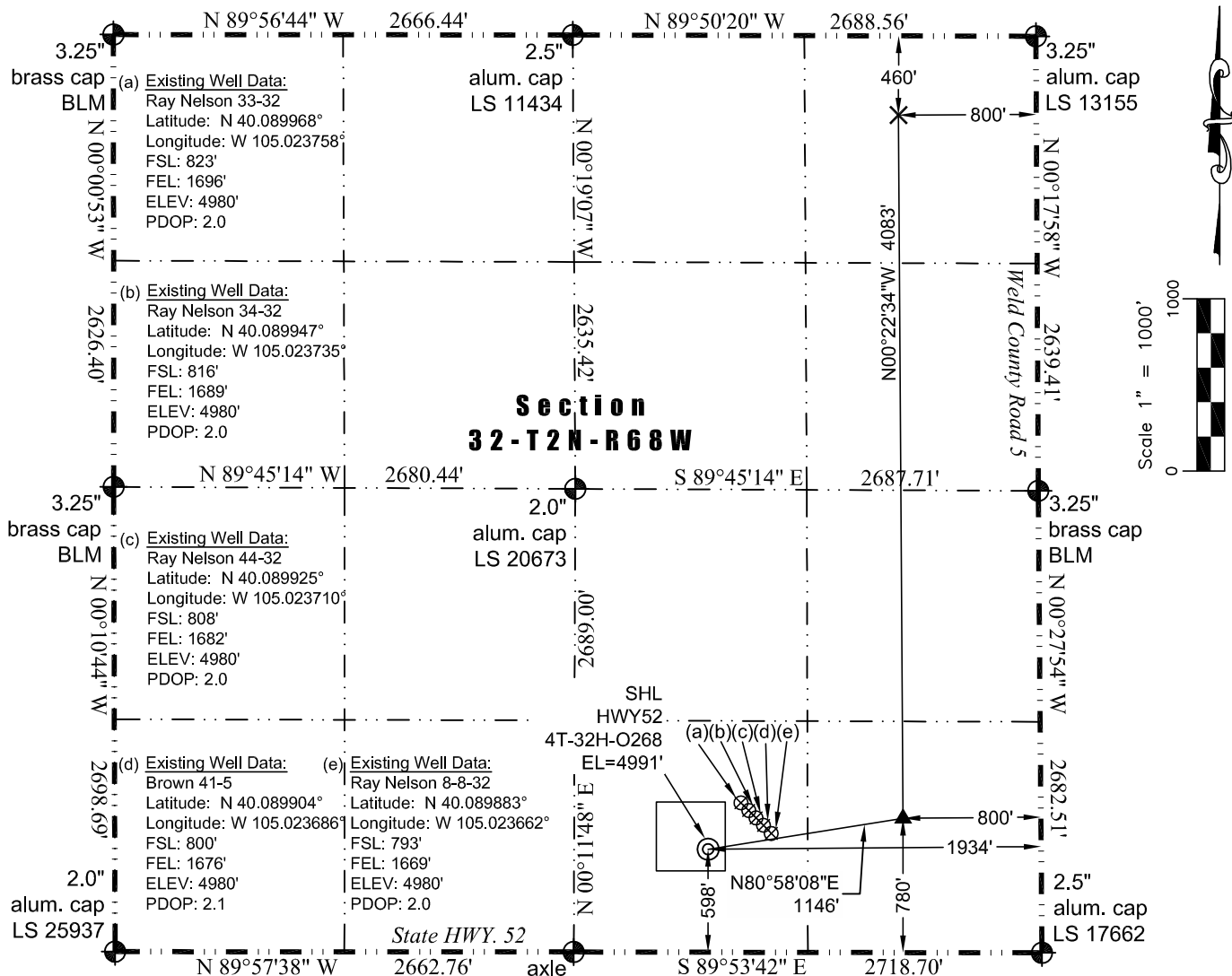




WELL LOCATION CERTIFICATE

THIS MAP DOES NOT REPRESENT A BOUNDARY SURVEY

Washburn Land Surveying
www.WashburnSurveying.com
970-232-9645



In accordance with a request from Jay Knutson of Crestone Peak Resources, Washburn Land Surveying, LLC has determined the location of the **HWY52 4T-32H-O268** well site to be SHL: 598' FSL and 1934' FEL, (TPZ: 780' FSL and 800' FEL), (BHL: 460' FNL and 800' FEL), as measured at ninety (90) degrees from the section lines of Section 32, Township 2 North, Range 68 West of the 6th Principal Meridian, Weld County Colorado.

- LEGEND**
- ⊗ - Existing Well
 - ⊕ - Found Survey Monument
 - (c) - Calculated Dimension
 - ⊙ - Surface Hole Location (SHL)
 - ▲ - Top of Producing Zone (TPZ)
 - × - Bottom Hole Location (BHL)

I hereby certify that this Well Location Certificate was prepared by me or under my direct supervision on 12/10/2016 for and on behalf of Crestone Peak Resources. That it is not a Land Survey Plat or an Improvement Survey Plat and that it is not to be relied upon for establishment of fences, buildings, or other future improvement lines.

John Robert McGehee LS#38219
Well: HWY52 4T-32H-O268 WLC