

NOBLE ENERGY INC.
LORENZ 16-15
SESE 15-5N-65W
465 FSL & 465 FEL
WELD COUNTY, CO
Wattenberg
CURRENT WELLBORE SCHEMATIC
with PROPOSED P&A
2/11/2017

API: 05-123-21313
 COGCC #

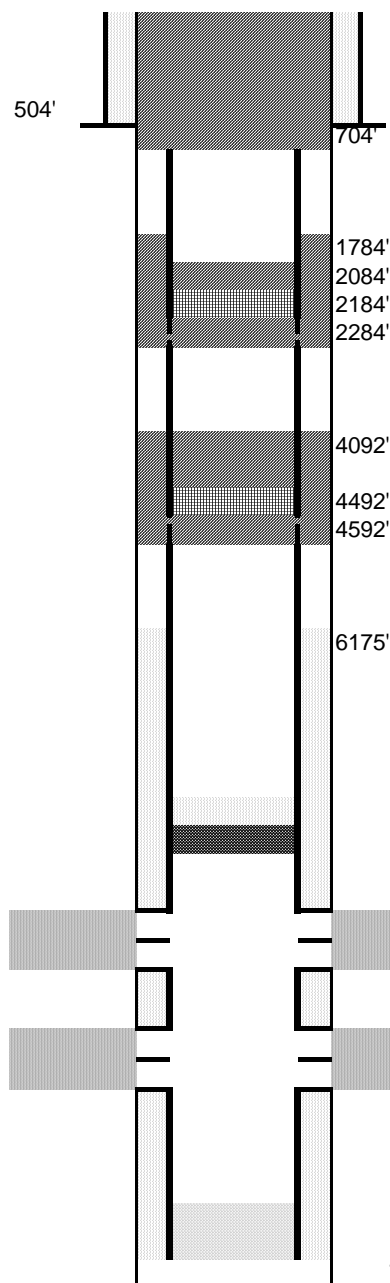
GL Elev: 4,617
 KB Elev: 4,629

Spud Date: 11/24/2003

Surface Casing :
 8-5/8", J-55, 24# @ 504'
 Cement: 370 sx
 TOC: Surface

TOC @ ~6,175'

Production Casing :
 4-1/2", I-80, 11.60# @ 7,097'
 Cement: 175 sx
 TD: 7125



Cut surface casing off 6'-8' below surface.

Pump 130 sx and bring to surface
 Pump 125 sx balance plug (w/ GasChek)
 Cut and pull csg @ 704'

Place 2 bbls on top (9 sx)
 Set CICR @ 2,184'
 Pump 190 sx through (w/ Gaschek)
 Perforate csg @ 2,284'

Place 6 bbls on top (30 sx) (w/ Gaschek)
 Set CICR @ 4,492'
 Pump 190 sx through (w/ Gaschek)
 Perforate csg @ 4,592'

CIBP @ 6,614' w/ 2 sx cement on top

Niobrara Perforations: 6,664' - 6,874'

Codell Perforations: 6,968' - 6,988'

TD: 7125