

LEGEND

- ◆ ~ FOUND ORIGINAL STONE
- ~ FOUND GLO BRASS CAP ON STEEL POST
- ⊕ ~ FOUND REBAR AND CAP BY LS15710
- ~ FOUND No.6 REBAR WITH A 2 1/2" ALUMINUM CAP, LS24963
- ~ WELL FEATURE
- (M) ~ MEASURED IN FIELD
- L ~ 90° SYMBOL
- WC ~ WITNESS CORNER

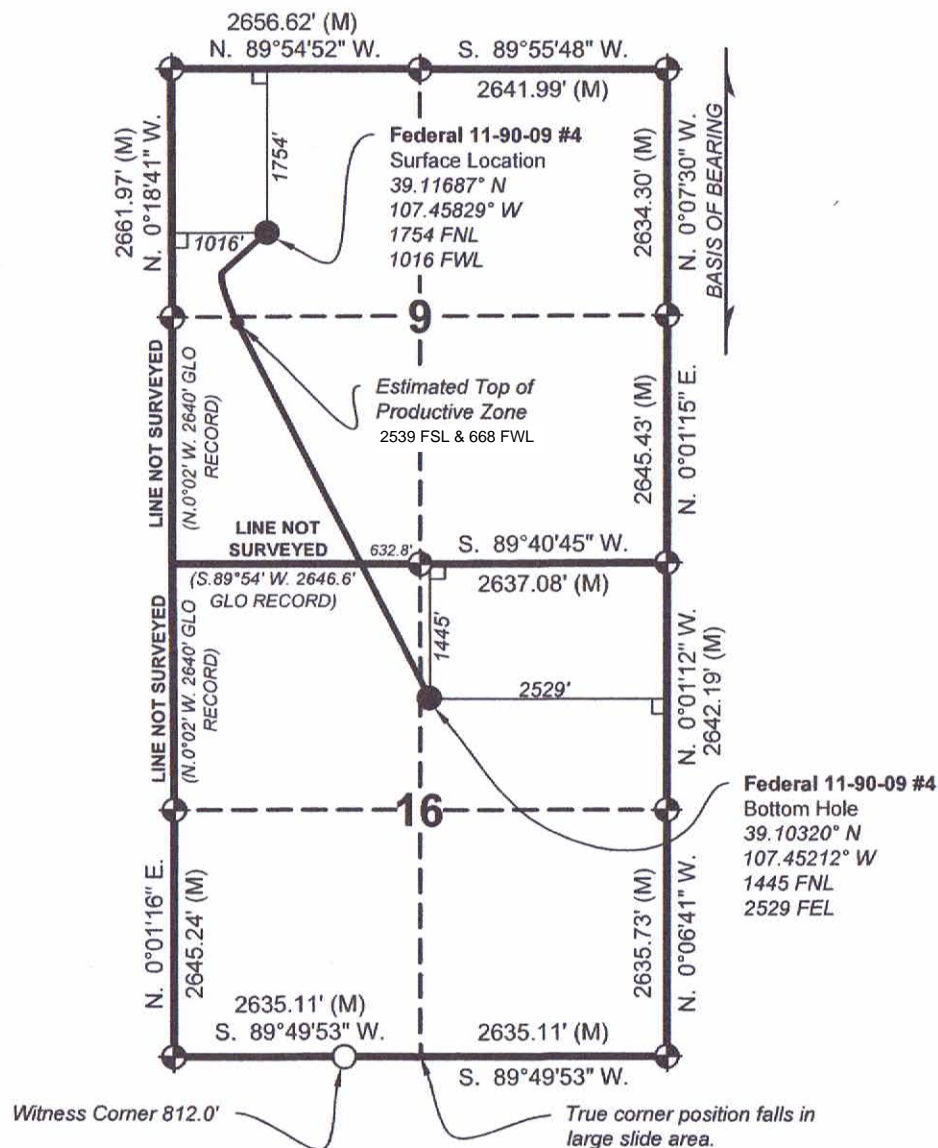
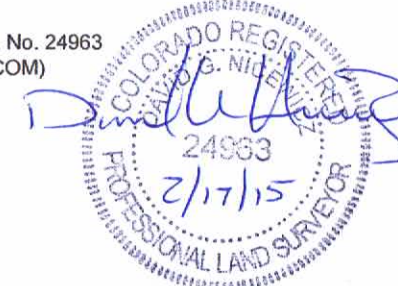
BASIS OF BEARING:

THE LINE FROM THE E $\frac{1}{4}$ CORNER TO THE NE CORNER OF SECTION 9, TOWNSHIP 11 SOUTH, RANGE 90 WEST, 6TH P.M., WAS ASSUMED TO BEAR N. 0°07'30" W. AS MONUMENTED AND SHOWN HEREON.

CERTIFICATE OF SURVEY:

I, David G. Nicewicz, a Registered Land Surveyor in the State of Colorado, do hereby certify that the survey represented by this plat was made under my direction and supervision, and that this plat accurately represents this survey.

David G. Nicewicz P.L.S. No. 24963
(for and on behalf of AECOM)



AECOM OF GLENWOOD SPRINGS COLORADO, has in accordance with a request from ERIC SANFORD, for SG INTERESTS I, LTD, determined the location of **FEDERAL 11-90-09 #4 BOTTOM HOLE** to be **1445 FNL & 2529 FEL** in Section 16, Township 11 South, Range 90 West, of the Sixth Principal Meridian, Gunnison County, Colorado.

GAS WELL LOCATION PLAT

FEDERAL 11-90-09 #4 BOTTOM HOLE

Located in the NE $\frac{1}{4}$ of Section 16,
Township 11 South, Range 90 West, 6th P.M.,
Gunnison County, Colorado

SURVEYED BY: DGN	DWG DATE: 02/12/15	David G. Nicewicz, PLS	
DRAFTED BY: MLD	SCALE: 1" = 2000'	cell: (720) 456-1104 david.nicewicz@urs.com	AECOM 804 Colorado Ave, Suite 201 Glenwood Springs Co 81610
JOB NO.: 22244264.50800		SHEET NO. 1 of 1	