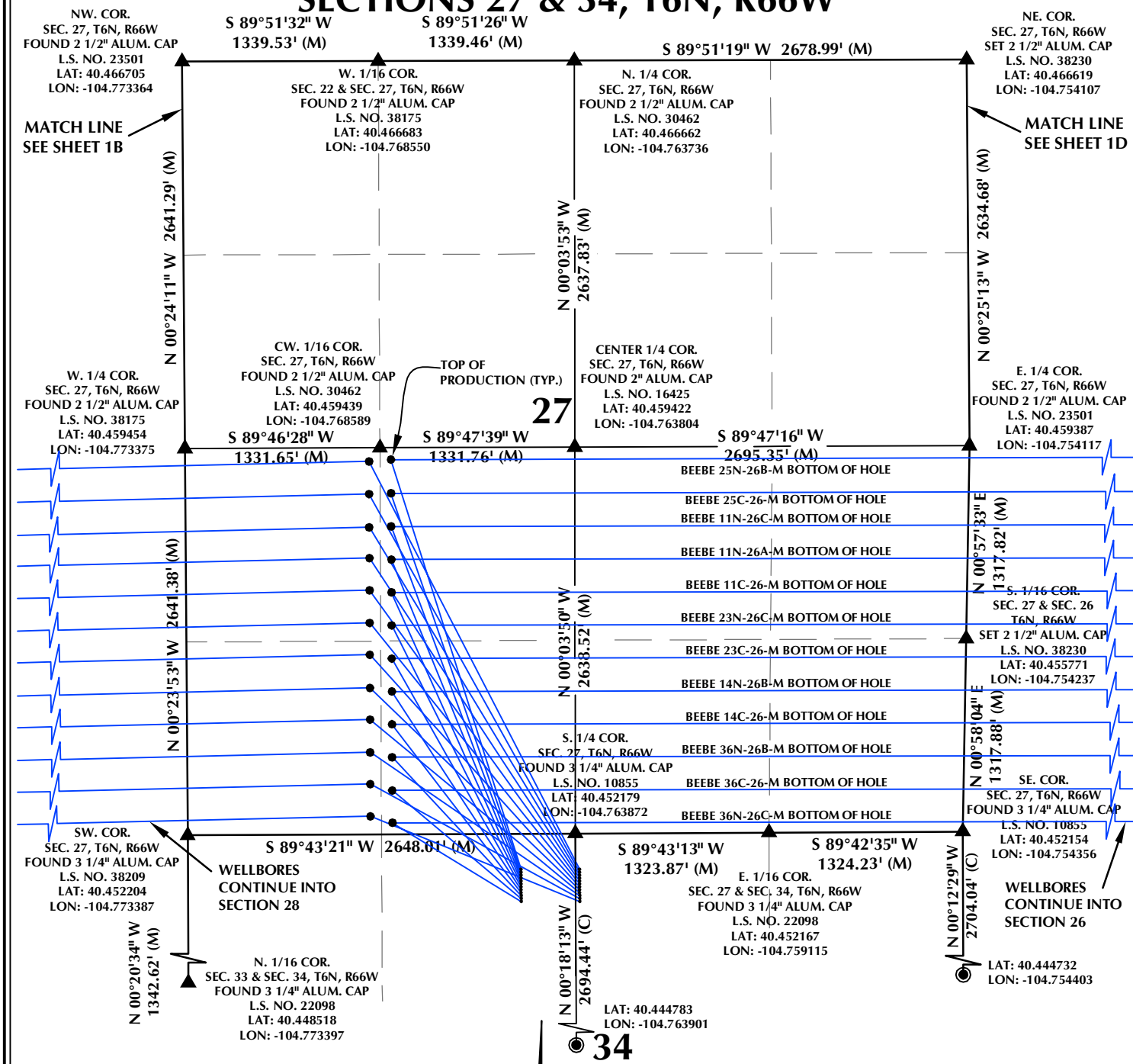


# SECTIONS 27 & 34, T6N, R66W



- NOTES:**
- ▲ INDICATES SECTION CORNER
  - INDICATES CALCULATED CORNER
  - BASIS OF BEARING DERIVED FROM COLORADO COORDINATE SYSTEM OF 1983 NORTH ZONE.
  - ALL MEASURED DISTANCES ARE GRID. COMBINED SCALE FACTOR: .99974180 CALCULATED FROM THE NE. CORNER OF SECTION 34, T6N, R66W
  - WELL FOOTAGES ARE MEASURED AT RIGHT ANGLES TO THE SECTION LINES.

## WELL PAD - BEEBE 3-34

**MULTI-WELL PLAN**  
 BEEBE 25N-26B-M, BEEBE 25C-26-M, BEEBE 11N-26C-M,  
 BEEBE 11N-26A-M, BEEBE 11C-26-M, BEEBE 23N-26C-M,  
 BEEBE 23C-26-M, BEEBE 14N-26B-M, BEEBE 14C-26-M,  
 BEEBE 36N-26B-M, BEEBE 36C-26-M, BEEBE 36N-26C-M,  
 BEEBE 25C-29-L, BEEBE 25N-29C-L, BEEBE 25N-29A-L,  
 BEEBE 10N-29C-L, BEEBE 10N-29B-L, BEEBE 23C-29-L,  
 BEEBE 23N-29A-L, BEEBE 15N-29B-L, BEEBE 15C-29-L,  
 BEEBE 36N-29C-L, BEEBE 36N-29B-L & BEEBE 36C-29-L  
 LOCATED IN SECTIONS 26, 27, 28, 29 & 34  
 T6N, R66W, 6TH P.M.  
 WELD COUNTY, COLORADO

**SYNERGY**  
 RESOURCES CORPORATION  
 1625 Broadway, Suite 300  
 Denver, Colorado 80202



## CONSULTING, LLC

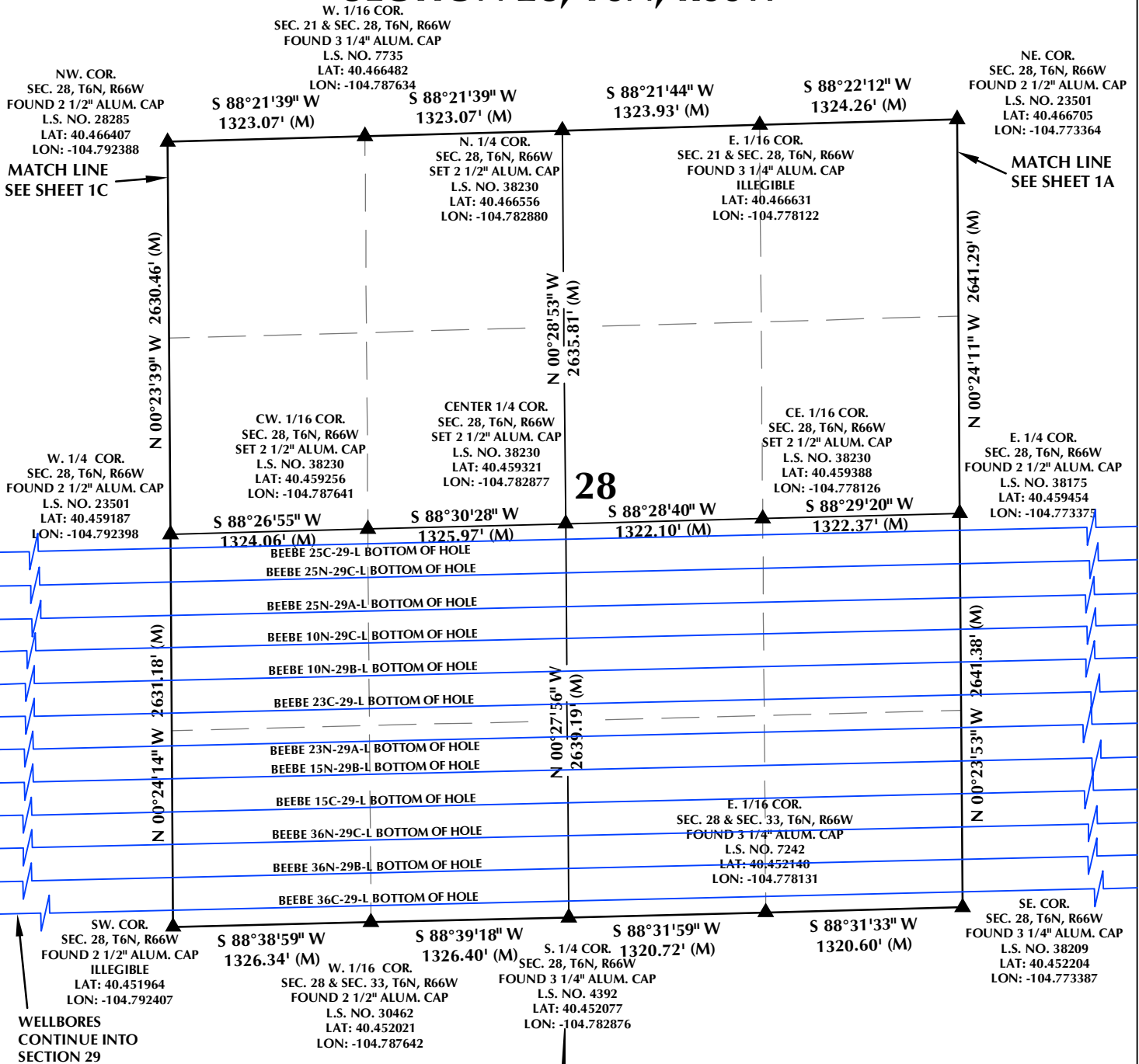
**SHERIDAN OFFICE**  
 1095 Saberton Avenue  
 Sheridan, Wyoming 82801  
 Phone 307-674-0609

**LOVELAND OFFICE**  
 1635 Foxtrail Drive, Suite 204  
 Loveland, Colorado 80538  
 Phone 970-776-4331

DRAFTED BY: LMO	CHECKED BY: JRS	SHEET NO: <b>1A</b> 1A OF 3
DATE DRAFTED: 12/30/16	DATE SURVEYED: 11/8/16	
REVISED:	FILE NAME: 16-108	

K:\SYNERGY RESOURCES\2016\_108\_BEEBE\_T6N\_R66W\_SEC\_34\PLATS\BEEBE MW PLAN.dwg, 1/5/2017 1:48:32 PM, zsch

# SECTION 28, T6N, R66W



- NOTES:**
- ▲ INDICATES SECTION CORNER
  - INDICATES CALCULATED CORNER
  - BASIS OF BEARING DERIVED FROM COLORADO COORDINATE SYSTEM OF 1983 NORTH ZONE.
  - ALL MEASURED DISTANCES ARE GRID. COMBINED SCALE FACTOR: .99974180 CALCULATED FROM THE NE. CORNER OF SECTION 34, T6N, R66W
  - WELL FOOTAGES ARE MEASURED AT RIGHT ANGLES TO THE SECTION LINES.

## WELL PAD - BEEBE 3-34

**MULTI-WELL PLAN**  
 BEEBE 25N-26B-M, BEEBE 25C-26-M, BEEBE 11N-26C-M,  
 BEEBE 11N-26A-M, BEEBE 11C-26-M, BEEBE 23N-26C-M,  
 BEEBE 23C-26-M, BEEBE 14N-26B-M, BEEBE 14C-26-M,  
 BEEBE 36N-26B-M, BEEBE 36C-26-M, BEEBE 36N-26C-M,  
 BEEBE 25C-29-L, BEEBE 25N-29C-L, BEEBE 25N-29A-L,  
 BEEBE 10N-29C-L, BEEBE 10N-29B-L, BEEBE 23C-29-L,  
 BEEBE 23N-29A-L, BEEBE 15N-29B-L, BEEBE 15C-29-L,  
 BEEBE 36N-29C-L, BEEBE 36N-29B-L & BEEBE 36C-29-L  
 LOCATED IN SECTIONS 26, 27, 28, 29 & 34  
 T6N, R66W, 6TH P.M.  
 WELD COUNTY, COLORADO

**SYNERGY**  
 RESOURCES CORPORATION  
 1625 Broadway, Suite 300  
 Denver, Colorado 80202



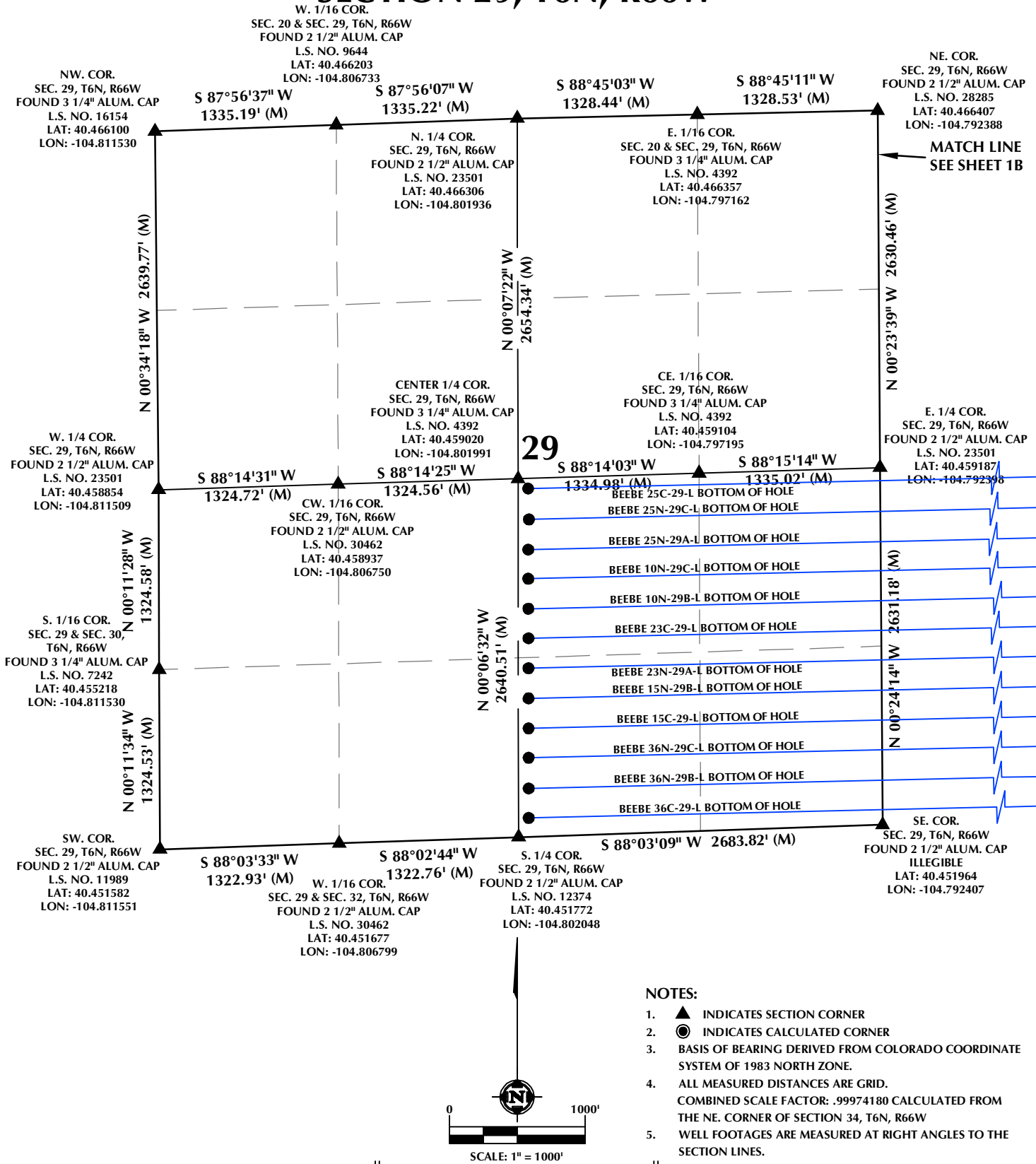
## CONSULTING, LLC

**SHERIDAN OFFICE**  
 1095 Saberton Avenue  
 Sheridan, Wyoming 82801  
 Phone 307-674-0609

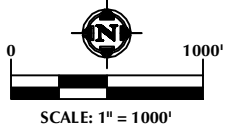
**LOVELAND OFFICE**  
 1635 Foxtrail Drive, Suite 204  
 Loveland, Colorado 80538  
 Phone 970-776-4331

DRAFTED BY: LMO	CHECKED BY: JRS	SHEET NO: <b>1B</b> 1B OF 3
DATE DRAFTED: 12/30/16	DATE SURVEYED: 11/8/16	
REVISED:	FILE NAME: 16-108	

# SECTION 29, T6N, R66W



- NOTES:**
- ▲ INDICATES SECTION CORNER
  - INDICATES CALCULATED CORNER
  - BASIS OF BEARING DERIVED FROM COLORADO COORDINATE SYSTEM OF 1983 NORTH ZONE.
  - ALL MEASURED DISTANCES ARE GRID. COMBINED SCALE FACTOR: .99974180 CALCULATED FROM THE NE. CORNER OF SECTION 34, T6N, R66W
  - WELL FOOTAGES ARE MEASURED AT RIGHT ANGLES TO THE SECTION LINES.



## WELL PAD - BEEBE 3-34

**MULTI-WELL PLAN**  
BEEBE 25N-26B-M, BEEBE 25C-26-M, BEEBE 11N-26C-M,  
BEEBE 11N-26A-M, BEEBE 11C-26-M, BEEBE 23N-26C-M,  
BEEBE 23C-26-M, BEEBE 14N-26B-M, BEEBE 14C-26-M,  
BEEBE 36N-26B-M, BEEBE 36C-26-M, BEEBE 36N-26C-M,  
BEEBE 25C-29-L, BEEBE 25N-29C-L, BEEBE 25N-29A-L,  
BEEBE 10N-29C-L, BEEBE 10N-29B-L, BEEBE 23C-29-L,  
BEEBE 23N-29A-L, BEEBE 15N-29B-L, BEEBE 15C-29-L,  
BEEBE 36N-29C-L, BEEBE 36N-29B-L & BEEBE 36C-29-L  
LOCATED IN SECTIONS 26, 27, 28, 29 & 34  
T6N, R66W, 6TH P.M.  
WELD COUNTY, COLORADO

**SYNERGY**  
RESOURCES CORPORATION

1625 Broadway, Suite 300  
Denver, Colorado 80202



## CONSULTING, LLC

**SHERIDAN OFFICE**  
1095 Saberton Avenue  
Sheridan, Wyoming 82801  
Phone 307-674-0609

**LOVELAND OFFICE**  
1635 Foxtrail Drive, Suite 204  
Loveland, Colorado 80538  
Phone 970-776-4331

DRAFTED BY: LMO	CHECKED BY: JRS	SHEET NO: <b>1C</b> 1C OF 3
DATE DRAFTED: 12/30/16	DATE SURVEYED: 11/8/16	
REVISED:	FILE NAME: 16-108	

# SECTION 26, T6N, R66W

W. 1/16 COR.  
SEC. 23 & SEC. 26, T6N, R66W  
SET 2 1/2" ALUM. CAP  
L.S. NO. 38230  
LAT: 40.466601  
LON: -104.749341

NE. COR.  
SEC. 26, T6N, R66W  
FOUND 2 1/2" ALUM. CAP  
WITNESS CORNER 1505' SOUTH  
OF CORNER POSITION  
L.S. NO. 38175  
LAT: 40.466586  
LON: -104.734972

NW. COR.  
SEC. 26, T6N, R66W  
SET 2 1/2" ALUM. CAP  
L.S. NO. 38230  
LAT: 40.466619  
LON: -104.754107

S 89°48'14" W  
1326.28' (M)

S 89°47'56" W  
1326.10' (M)

S 89°29'20" W  
1335.90' (M)

S 89°28'57" W  
1335.88' (M)

MATCH LINE  
SEE SHEET 1A

N. 1/4 COR.  
SEC. 26, T6N, R66W  
FOUND 2 1/2" ALUM. CAP  
L.S. NO. 23501  
LAT: 40.466583  
LON: -104.744575

E. 1/16 COR.  
SEC. 23 & SEC. 26, T6N, R66W  
FOUND 3 1/4" ALUM. CAP  
L.S. NO. 22098  
LAT: 40.466584  
LON: -104.739773

N 00°25'13" W 2634.68' (M)

N 01°03'05" W  
2629.46' (M)

N 01°22'18" W 2636.37' (M)

CW. 1/16 COR.  
SEC. 26, T6N, R66W  
FOUND 3 1/4" ALUM. CAP  
L.S. NO. 4392  
LAT: 40.459376  
LON: -104.749298

CENTER 1/4 COR.  
SEC. 26, T6N, R66W  
FOUND 3 1/4" ALUM. CAP  
L.S. NO. 4392  
LAT: 40.459365  
LON: -104.744482

E. 1/4 COR.  
SEC. 26, T6N, R66W  
FOUND 3 1/4" ALUM. CAP  
L.S. NO. 10855  
LAT: 40.459350  
LON: -104.734827

W. 1/4 COR.  
SEC. 26, T6N, R66W  
FOUND 2 1/2" ALUM. CAP  
L.S. NO. 23501  
LAT: 40.459387  
LON: -104.754117

S 89°41'20" W  
1340.98' (M)

S 89°40'46" W  
1340.34' (M)

S 89°37'43" W  
1343.32' (M)

S 89°37'47" W  
1343.26' (M)

26

CE. 1/16 COR.  
SEC. 26, T6N, R66W  
FOUND 2 1/2" ALUM. CAP  
L.S. NO. 30462  
LAT: 40.459358  
LON: -104.739654

N 00°57'33" E  
1317.82' (M)

N 00°58'04" E  
1317.88' (M)

N 01°02'30" W  
2628.58' (M)

N 01°01'28" W 2624.19' (M)

S. 1/16 COR.  
SEC. 27 & SEC. 26  
T6N, R66W  
SET 2 1/2" ALUM. CAP  
L.S. NO. 38230  
LAT: 40.455771  
LON: -104.754237

S 89°41'20" W  
1340.98' (M)

S 89°40'46" W  
1340.34' (M)

S 89°37'43" W  
1343.32' (M)

S 89°37'47" W  
1343.26' (M)

E. 1/16 COR.  
SEC. 26 & SEC. 35, T6N, R66W  
FOUND 2 1/2" ALUM. CAP  
L.S. NO. 28285  
LAT: 40.452149  
LON: -104.739565

SW. COR.  
SEC. 26, T6N, R66W  
FOUND 3 1/4" ALUM. CAP  
L.S. NO. 10855  
LAT: 40.452154  
LON: -104.754356

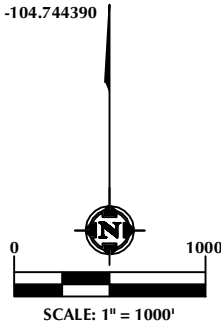
S 89°32'46" W 2773.48' (M)

S. 1/4 COR.  
SEC. 26, T6N, R66W  
FOUND 3 1/4" ALUM. CAP  
WITNESS CORNER 105.59'  
NORTH OF CORNER POSITION  
L.S. NO. 4392  
LAT: 40.452150  
LON: -104.744390

S 89°31'53" W  
1342.94' (M)

S 89°32'24" W  
1342.80' (M)

SE. COR.  
SEC. 26, T6N, R66W  
FOUND 2 1/2" ALUM. CAP  
ILLEGIBLE  
LAT: 40.452147  
LON: -104.734740



**NOTES:**

- ▲ INDICATES SECTION CORNER
- INDICATES CALCULATED CORNER
- BASIS OF BEARING DERIVED FROM COLORADO COORDINATE SYSTEM OF 1983 NORTH ZONE.
- ALL MEASURED DISTANCES ARE GRID. COMBINED SCALE FACTOR: .99974180 CALCULATED FROM THE NE. CORNER OF SECTION 34, T6N, R66W
- WELL FOOTAGES ARE MEASURED AT RIGHT ANGLES TO THE SECTION LINES.

**WELL PAD - BEEBE 3-34**

MULTI-WELL PLAN  
BEEBE 25N-26B-M, BEEBE 25C-26-M, BEEBE 11N-26C-M,  
BEEBE 11N-26A-M, BEEBE 11C-26-M, BEEBE 23N-26C-M,  
BEEBE 23C-26-M, BEEBE 14N-26B-M, BEEBE 14C-26-M,  
BEEBE 36N-26B-M, BEEBE 36C-26-M, BEEBE 36N-26C-M,  
BEEBE 25C-29-L, BEEBE 25N-29C-L, BEEBE 25N-29A-L,  
BEEBE 10N-29C-L, BEEBE 10N-29B-L, BEEBE 23C-29-L,  
BEEBE 23N-29A-L, BEEBE 15N-29B-L, BEEBE 15C-29-L,  
BEEBE 36N-29C-L, BEEBE 36N-29B-L & BEEBE 36C-29-L  
LOCATED IN SECTIONS 26, 27, 28, 29 & 34  
T6N, R66W, 6TH P.M.  
WELD COUNTY, COLORADO

**SYNERGY**  
RESOURCES CORPORATION  
1625 Broadway, Suite 300  
Denver, Colorado 80202

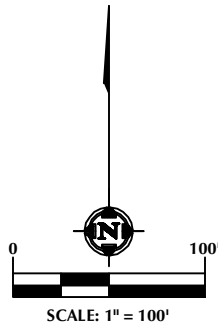
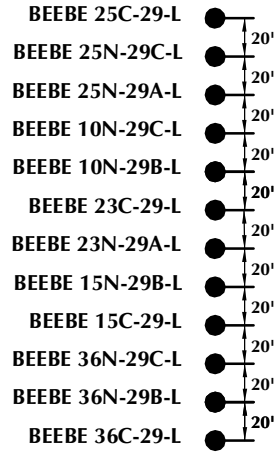
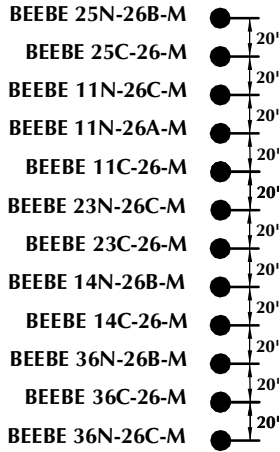


**CONSULTING, LLC**

SHERIDAN OFFICE 1095 Saberton Avenue Sheridan, Wyoming 82801 Phone 307-674-0609  
LOVELAND OFFICE 1635 Foxtrail Drive, Suite 204 Loveland, Colorado 80538 Phone 970-776-4331

DRAFTED BY: LMO	CHECKED BY: JRS	SHEET NO: <b>1D</b> 1D OF 3
DATE DRAFTED: 12/30/16	DATE SURVEYED: 11/8/16	
REVISED:	FILE NAME: 16-108	

# BEEBE 3-34



**NOTES:**

1. ▲ INDICATES SECTION CORNER
2. ● INDICATES CALCULATED CORNER
3. BASIS OF BEARING DERIVED FROM COLORADO COORDINATE SYSTEM OF 1983 NORTH ZONE.
4. ALL MEASURED DISTANCES ARE GRID.  
COMBINED SCALE FACTOR: .99974180 CALCULATED FROM THE NE. CORNER OF SECTION 34, T6N, R66W
5. WELL FOOTAGES ARE MEASURED AT RIGHT ANGLES TO THE SECTION LINES.

**WELL PAD - BEEBE 3-34**

MULTI-WELL PLAN  
 BEEBE 25N-26B-M, BEEBE 25C-26-M, BEEBE 11N-26C-M,  
 BEEBE 11N-26A-M, BEEBE 11C-26-M, BEEBE 23N-26C-M,  
 BEEBE 23C-26-M, BEEBE 14N-26B-M, BEEBE 14C-26-M,  
 BEEBE 36N-26B-M, BEEBE 36C-26-M, BEEBE 36N-26C-M,  
 BEEBE 25C-29-L, BEEBE 25N-29C-L, BEEBE 25N-29A-L,  
 BEEBE 10N-29C-L, BEEBE 10N-29B-L, BEEBE 23C-29-L,  
 BEEBE 23N-29A-L, BEEBE 15N-29B-L, BEEBE 15C-29-L,  
 BEEBE 36N-29C-L, BEEBE 36N-29B-L & BEEBE 36C-29-L  
 LOCATED IN SECTIONS 26, 27, 28, 29 & 34  
 T6N, R66W, 6TH P.M.  
 WELD COUNTY, COLORADO

**SYNERGY**  
RESOURCES CORPORATION

1625 Broadway, Suite 300  
Denver, Colorado 80202



**CONSULTING, LLC**

**SHERIDAN OFFICE**      **LOVELAND OFFICE**  
 1095 Saberton Avenue      1635 Foxtrail Drive, Suite 204  
 Sheridan, Wyoming 82801      Loveland, Colorado 80538  
 Phone 307-674-0609      Phone 970-776-4331

DRAFTED BY:	LMO	CHECKED BY:	JRS	SHEET NO:
DATE DRAFTED:	12/30/16	DATE SURVEYED:	11/8/16	<b>2</b>
REVISED:		FILE NAME:	16-108	2 OF 3

# BEEBE 3-34

**WELL NOTES:**

<b>BEEBE 25N-26B-M</b> <b>SURFACE:</b> 242' FNL & 2276' FWL LATITUDE= 40.451518° LONGITUDE= -104.765212°	<b>TOP OF PRODUCTION:</b> 2559' FSL & 1406' FWL LATITUDE= 40.459215° LONGITUDE= -104.768321°	<b>BOTTOM HOLE:</b> 2539' FSL & 2609' FWL LATITUDE= 40.459120° LONGITUDE= -104.744748°	<b>FORMATION:</b> NIOBRARA
<b>BEEBE 25C-26-M</b> <b>SURFACE:</b> 262' FNL & 2276' FWL LATITUDE= 40.451463° LONGITUDE= -104.765212°	<b>TOP OF PRODUCTION:</b> 2329' FSL & 1406' FWL LATITUDE= 40.458584° LONGITUDE= -104.768325°	<b>BOTTOM HOLE:</b> 2305' FSL & 2617' FWL LATITUDE= 40.458478° LONGITUDE= -104.744740°	<b>FORMATION:</b> CODELL
<b>BEEBE 11N-26C-M</b> <b>SURFACE:</b> 282' FNL & 2275' FWL LATITUDE= 40.451408° LONGITUDE= -104.765213°	<b>TOP OF PRODUCTION:</b> 2103' FSL & 1405' FWL LATITUDE= 40.457963° LONGITUDE= -104.768328°	<b>BOTTOM HOLE:</b> 2078' FSL & 2625' FWL LATITUDE= 40.457855° LONGITUDE= -104.744732°	<b>FORMATION:</b> NIOBRARA
<b>BEEBE 11N-26A-M</b> <b>SURFACE:</b> 302' FNL & 2275' FWL LATITUDE= 40.451353° LONGITUDE= -104.765213°	<b>TOP OF PRODUCTION:</b> 1877' FSL & 1404' FWL LATITUDE= 40.457343° LONGITUDE= -104.768331°	<b>BOTTOM HOLE:</b> 1851' FSL & 2633' FWL LATITUDE= 40.457231° LONGITUDE= -104.744724°	<b>FORMATION:</b> NIOBRARA
<b>BEEBE 11C-26-M</b> <b>SURFACE:</b> 322' FNL & 2275' FWL LATITUDE= 40.451299° LONGITUDE= -104.765214°	<b>TOP OF PRODUCTION:</b> 1653' FSL & 1404' FWL LATITUDE= 40.456728° LONGITUDE= -104.768335°	<b>BOTTOM HOLE:</b> 1626' FSL & 2641' FWL LATITUDE= 40.456614° LONGITUDE= -104.744716°	<b>FORMATION:</b> CODELL
<b>BEEBE 23N-26C-M</b> <b>SURFACE:</b> 342' FNL & 2275' FWL LATITUDE= 40.451244° LONGITUDE= -104.765215°	<b>TOP OF PRODUCTION:</b> 1428' FSL & 1403' FWL LATITUDE= 40.456111° LONGITUDE= -104.768338°	<b>BOTTOM HOLE:</b> 1401' FSL & 2649' FWL LATITUDE= 40.455996° LONGITUDE= -104.744709°	<b>FORMATION:</b> NIOBRARA
<b>BEEBE 23C-26-M</b> <b>SURFACE:</b> 362' FNL & 2275' FWL LATITUDE= 40.451189° LONGITUDE= -104.765215°	<b>TOP OF PRODUCTION:</b> 1201' FSL & 1402' FWL LATITUDE= 40.455488° LONGITUDE= -104.768342°	<b>BOTTOM HOLE:</b> 1180' FSL & 2656' FWL LATITUDE= 40.455390° LONGITUDE= -104.744701°	<b>FORMATION:</b> CODELL
<b>BEEBE 14N-26B-M</b> <b>SURFACE:</b> 382' FNL & 2275' FWL LATITUDE= 40.451134° LONGITUDE= -104.765216°	<b>TOP OF PRODUCTION:</b> 976' FSL & 1402' FWL LATITUDE= 40.454870° LONGITUDE= -104.768345°	<b>BOTTOM HOLE:</b> 953' FSL & 2664' FWL LATITUDE= 40.454766° LONGITUDE= -104.744693°	<b>FORMATION:</b> NIOBRARA
<b>BEEBE 14C-26-M</b> <b>SURFACE:</b> 402' FNL & 2275' FWL LATITUDE= 40.451079° LONGITUDE= -104.765216°	<b>TOP OF PRODUCTION:</b> 752' FSL & 1401' FWL LATITUDE= 40.454255° LONGITUDE= -104.768348°	<b>BOTTOM HOLE:</b> 727' FSL & 2672' FWL LATITUDE= 40.454146° LONGITUDE= -104.744685°	<b>FORMATION:</b> CODELL
<b>BEEBE 36N-26B-M</b> <b>SURFACE:</b> 422' FNL & 2275' FWL LATITUDE= 40.451024° LONGITUDE= -104.765217°	<b>TOP OF PRODUCTION:</b> 527' FSL & 1401' FWL LATITUDE= 40.453637° LONGITUDE= -104.768352°	<b>BOTTOM HOLE:</b> 501' FSL & 2680' FWL LATITUDE= 40.453526° LONGITUDE= -104.744677°	<b>FORMATION:</b> NIOBRARA
<b>BEEBE 36C-26-M</b> <b>SURFACE:</b> 442' FNL & 2274' FWL LATITUDE= 40.450969° LONGITUDE= -104.765218°	<b>TOP OF PRODUCTION:</b> 300' FSL & 1400' FWL LATITUDE= 40.453014° LONGITUDE= -104.768355°	<b>BOTTOM HOLE:</b> 276' FSL & 2688' FWL LATITUDE= 40.452908° LONGITUDE= -104.744670°	<b>FORMATION:</b> CODELL
<b>BEEBE 36N-26C-M</b> <b>SURFACE:</b> 462' FNL & 2274' FWL LATITUDE= 40.450914° LONGITUDE= -104.765218°	<b>TOP OF PRODUCTION:</b> 79' FSL & 1399' FWL LATITUDE= 40.452408° LONGITUDE= -104.768359°	<b>BOTTOM HOLE:</b> 51' FSL & 2696' FWL LATITUDE= 40.452290° LONGITUDE= -104.744662°	<b>FORMATION:</b> NIOBRARA

## WELL PAD - BEEBE 3-34

**MULTI-WELL PLAN**  
 BEEBE 25N-26B-M, BEEBE 25C-26-M, BEEBE 11N-26C-M,  
 BEEBE 11N-26A-M, BEEBE 11C-26-M, BEEBE 23N-26C-M,  
 BEEBE 23C-26-M, BEEBE 14N-26B-M, BEEBE 14C-26-M,  
 BEEBE 36N-26B-M, BEEBE 36C-26-M, BEEBE 36N-26C-M,  
 BEEBE 25C-29-L, BEEBE 25N-29C-L, BEEBE 25N-29A-L,  
 BEEBE 10N-29C-L, BEEBE 10N-29B-L, BEEBE 23C-29-L,  
 BEEBE 23N-29A-L, BEEBE 15N-29B-L, BEEBE 15C-29-L,  
 BEEBE 36N-29C-L, BEEBE 36N-29B-L & BEEBE 36C-29-L  
 LOCATED IN SECTIONS 26, 27, 28, 29 & 34  
 T6N, R66W, 6TH P.M.  
 WELD COUNTY, COLORADO



1625 Broadway, Suite 300  
 Denver, Colorado 80202



## CONSULTING, LLC

**SHERIDAN OFFICE**  
 1095 Saberton Avenue  
 Sheridan, Wyoming 82801  
 Phone 307-674-0609

**LOVELAND OFFICE**  
 1635 Foxtrail Drive, Suite 204  
 Loveland, Colorado 80538  
 Phone 970-776-4331

DRAFTED BY:	LMO	CHECKED BY:	JRS	SHEET NO: <b>3A</b> 3A OF 3
DATE DRAFTED:	12/30/16	DATE SURVEYED:	11/8/16	
REVISED:		FILE NAME:	16-108	

# BEEBE 3-34

**WELL NOTES:**

BEEBE 25C-29-L

<b>SURFACE:</b> 244' FNL & 2620' FEL LATITUDE= 40.451509° LONGITUDE= -104.763774°	<b>TOP OF PRODUCTION:</b> 2325' FSL & 1256' FWL LATITUDE= 40.459186° LONGITUDE= -104.768860°	<b>BOTTOM HOLE:</b> 2564' FSL & 2595' FEL LATITUDE= 40.458819° LONGITUDE= -104.801723°	<b>FORMATION:</b> CODELL
--	---	---	-----------------------------

BEEBE 25N-29C-L

<b>SURFACE:</b> 264' FNL & 2620' FEL LATITUDE= 40.451454° LONGITUDE= -104.763775°	<b>TOP OF PRODUCTION:</b> 2325' FSL & 1256' FWL LATITUDE= 40.458574° LONGITUDE= -104.768864°	<b>BOTTOM HOLE:</b> 2336' FSL & 2596' FEL LATITUDE= 40.458193° LONGITUDE= -104.801728°	<b>FORMATION:</b> NIOBRARA
--	---	---	-------------------------------

BEEBE 25N-29A-L

<b>SURFACE:</b> 284' FNL & 2620' FEL LATITUDE= 40.451399° LONGITUDE= -104.763776°	<b>TOP OF PRODUCTION:</b> 2098' FSL & 1255' FWL LATITUDE= 40.457951° LONGITUDE= -104.768867°	<b>BOTTOM HOLE:</b> 2114' FSL & 2597' FEL LATITUDE= 40.457583° LONGITUDE= -104.801733°	<b>FORMATION:</b> NIOBRARA
--	---	---	-------------------------------

BEEBE 10N-29C-L

<b>SURFACE:</b> 304' FNL & 2620' FEL LATITUDE= 40.451344° LONGITUDE= -104.763776°	<b>TOP OF PRODUCTION:</b> 1888' FSL & 1254' FWL LATITUDE= 40.457375° LONGITUDE= -104.768870°	<b>BOTTOM HOLE:</b> 1899' FSL & 2598' FEL LATITUDE= 40.456993° LONGITUDE= -104.801737°	<b>FORMATION:</b> NIOBRARA
--	---	---	-------------------------------

BEEBE 10N-29B-L

<b>SURFACE:</b> 324' FNL & 2620' FEL LATITUDE= 40.451289° LONGITUDE= -104.763777°	<b>TOP OF PRODUCTION:</b> 1668' FSL & 1254' FWL LATITUDE= 40.456771° LONGITUDE= -104.768874°	<b>BOTTOM HOLE:</b> 1679' FSL & 2599' FEL LATITUDE= 40.456388° LONGITUDE= -104.801742°	<b>FORMATION:</b> NIOBRARA
--	---	---	-------------------------------

BEEBE 23C-29-L

<b>SURFACE:</b> 344' FNL & 2620' FEL LATITUDE= 40.451235° LONGITUDE= -104.763777°	<b>TOP OF PRODUCTION:</b> 1445' FSL & 1253' FWL LATITUDE= 40.456159° LONGITUDE= -104.768877°	<b>BOTTOM HOLE:</b> 1461' FSL & 2600' FEL LATITUDE= 40.455790° LONGITUDE= -104.801747°	<b>FORMATION:</b> CODELL
--	---	---	-----------------------------

BEEBE 23N-29A-L

<b>SURFACE:</b> 364' FNL & 2620' FEL LATITUDE= 40.451180° LONGITUDE= -104.763778°	<b>TOP OF PRODUCTION:</b> 1228' FSL & 1253' FWL LATITUDE= 40.455563° LONGITUDE= -104.768880°	<b>BOTTOM HOLE:</b> 1240' FSL & 2601' FEL LATITUDE= 40.455183° LONGITUDE= -104.801752°	<b>FORMATION:</b> NIOBRARA
--	---	---	-------------------------------

BEEBE 15N-29B-L

<b>SURFACE:</b> 384' FNL & 2620' FEL LATITUDE= 40.451125° LONGITUDE= -104.763778°	<b>TOP OF PRODUCTION:</b> 1001' FSL & 1252' FWL LATITUDE= 40.454940° LONGITUDE= -104.768884°	<b>BOTTOM HOLE:</b> 1019' FSL & 2603' FEL LATITUDE= 40.454576° LONGITUDE= -104.801756°	<b>FORMATION:</b> NIOBRARA
--	---	---	-------------------------------

BEEBE 15C-29-L

<b>SURFACE:</b> 404' FNL & 2620' FEL LATITUDE= 40.451070° LONGITUDE= -104.763779°	<b>TOP OF PRODUCTION:</b> 785' FSL & 1251' FWL LATITUDE= 40.454347° LONGITUDE= -104.768887°	<b>BOTTOM HOLE:</b> 797' FSL & 2604' FEL LATITUDE= 40.453966° LONGITUDE= -104.801761°	<b>FORMATION:</b> CODELL
--	--	--	-----------------------------

BEEBE 36N-29C-L

<b>SURFACE:</b> 424' FNL & 2621' FEL LATITUDE= 40.451015° LONGITUDE= -104.763780°	<b>TOP OF PRODUCTION:</b> 561' FSL & 1251' FWL LATITUDE= 40.453732° LONGITUDE= -104.768890°	<b>BOTTOM HOLE:</b> 580' FSL & 2605' FEL LATITUDE= 40.453370° LONGITUDE= -104.801766°	<b>FORMATION:</b> NIOBRARA
--	--	--	-------------------------------

BEEBE 36N-29B-L

<b>SURFACE:</b> 444' FNL & 2621' FEL LATITUDE= 40.450960° LONGITUDE= -104.763780°	<b>TOP OF PRODUCTION:</b> 344' FSL & 1250' FWL LATITUDE= 40.453136° LONGITUDE= -104.768894°	<b>BOTTOM HOLE:</b> 355' FSL & 2606' FEL LATITUDE= 40.452752° LONGITUDE= -104.801771°	<b>FORMATION:</b> NIOBRARA
--	--	--	-------------------------------

BEEBE 36C-29-L

<b>SURFACE:</b> 464' FNL & 2621' FEL LATITUDE= 40.450905° LONGITUDE= -104.763781°	<b>TOP OF PRODUCTION:</b> 124' FSL & 1249' FWL LATITUDE= 40.452533° LONGITUDE= -104.768897°	<b>BOTTOM HOLE:</b> 137' FSL & 2607' FEL LATITUDE= 40.452154° LONGITUDE= -104.801775°	<b>FORMATION:</b> CODELL
--	--	--	-----------------------------

## WELL PAD - BEEBE 3-34

**MULTI-WELL PLAN**

BEEBE 25N-26B-M, BEEBE 25C-26-M, BEEBE 11N-26C-M,  
BEEBE 11N-26A-M, BEEBE 11C-26-M, BEEBE 23N-26C-M,  
BEEBE 23C-26-M, BEEBE 14N-26B-M, BEEBE 14C-26-M,  
BEEBE 36N-26B-M, BEEBE 36C-26-M, BEEBE 36N-26C-M,  
BEEBE 25C-29-L, BEEBE 25N-29C-L, BEEBE 25N-29A-L,  
BEEBE 10N-29C-L, BEEBE 10N-29B-L, BEEBE 23C-29-L,  
BEEBE 23N-29A-L, BEEBE 15N-29B-L, BEEBE 15C-29-L,  
BEEBE 36N-29C-L, BEEBE 36N-29B-L & BEEBE 36C-29-L  
LOCATED IN SECTIONS 26, 27, 28, 29 & 34  
T6N, R66W, 6TH P.M.  
WELD COUNTY, COLORADO



1625 Broadway, Suite 300  
Denver, Colorado 80202



## CONSULTING, LLC

**SHERIDAN OFFICE**  
1095 Saberton Avenue  
Sheridan, Wyoming 82801  
Phone 307-674-0609

**LOVELAND OFFICE**  
1635 Foxtrail Drive, Suite 204  
Loveland, Colorado 80538  
Phone 970-776-4331

DRAFTED BY:	LMO	CHECKED BY:	JRS	SHEET NO: <b>3B</b> 3B OF 3
DATE DRAFTED:	12/30/16	DATE SURVEYED:	11/8/16	
REVISED:		FILE NAME:	16-108	