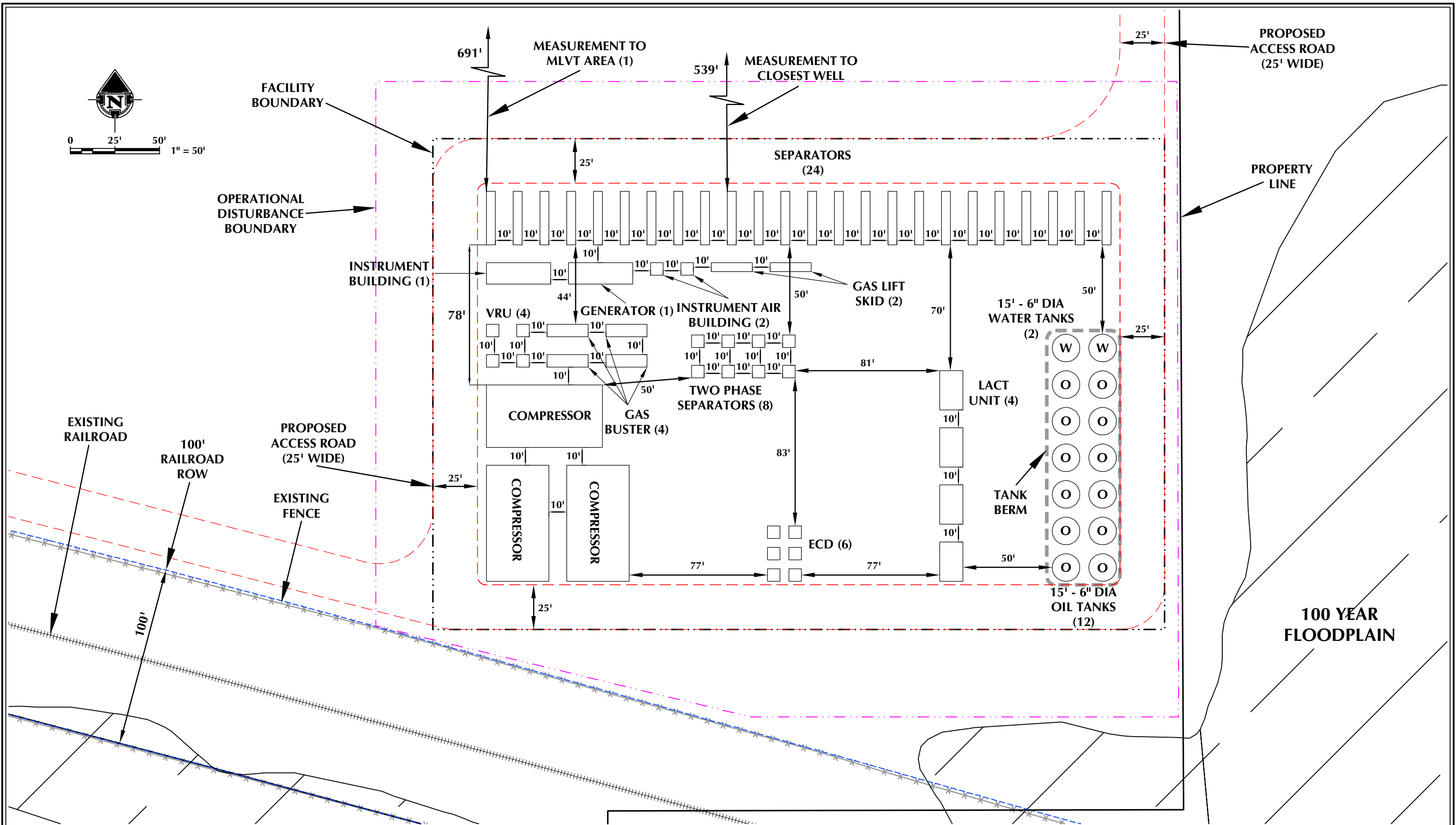


K:\SYNERGY RESOURCES\2016_08_BEEBE_T6N_R66W_SEC_34\DWG\BEEBE.dwg, 1/4/2017 9:42:54 PM, steven



| | | | | | |
|--|--|--|--|--|--|
| <p>NOTES:</p> <p>1. EQUIPMENT PLACEMENT IS APPROXIMATE AND SUBJECT TO MINOR MODIFICATION DUE TO SPECIFIC CIRCUMSTANCES.</p> | | <div data-bbox="1305 1764 1460 1935"></div> <p>LOVELAND OFFICE 1635 Foxtrail Drive, Suite 204 Loveland, Colorado 80538 Phone 970-776-4331</p> <p>SHERIDAN OFFICE 1095 Saberton Avenue Sheridan, Wyoming 82801 Phone 307-674-0609</p> <p>CONSULTING, LLC</p> | <div data-bbox="1693 1774 2004 1844"></div> <p>SYNERGY RESOURCES CORPORATION</p> <p>1625 Broadway, Suite 300 Denver, Colorado 80202</p> | <p>SCALE: 1" = 50'</p> <p>DATE SURVEYED: 11/8/16</p> <p>DATE: 12/9/16</p> <p>DRAFTER: CDJ</p> <p>REVISED: 12/29/16</p> | <p>FACILITY LOCATION DRAWING (B)</p> <p>BEEBE 3-34</p> <p>LOCATED IN SECTION 34, T6N, R66W, 6TH P.M.</p> <p>WELD COUNTY, COLORADO</p> |
|--|--|--|--|--|--|

FACILITY LOCATION DRAWING (C)
BEEBE 3-34
PRODUCTION FACILITY & MISC. EQUIPMENT

| | |
|--|---|
| # MLVTs | 1 |
| # VRUs | 4 |
| # Compressors | 3 |
| # LACT Units | 4 |
| # Combustors | 6 |
| # Gas Busters | 4 |
| # Oil Tanks | 12 |
| # Water Tanks | 2 |
| # Generators | 1 |
| # Meter Runs | 3 |
| # Single Separators | 24 |
| # Two Phase Separators | 8 |
| # Instrument Buildings | 2 Instrument Air, 1 Instrument Building |
| # Gas Lift Skids | 2 |
| * No existing facility equipment within disturbance area * | |

WELLS

Proposed:

BEEBE 25N-26B-M, BEEBE 25C-26-M, BEEBE 11N-26C-M,
BEEBE 11N-26A-M, BEEBE 11C-26-M, BEEBE 23N-26C-M,
BEEBE 23C-26-M, BEEBE 14N-26B-M, BEEBE 14C-26-M,
BEEBE 36N-26B-M, BEEBE 36C-26-M, BEEBE 36N-26C-M,
BEEBE 25C-29-L, BEEBE 25N-29C-L, BEEBE 25N-29A-L,
BEEBE 10N-29C-L, BEEBE 10N-29B-L, BEEBE 23C-29-L,
BEEBE 23N-29A-L, BEEBE 15N-29B-L, BEEBE 15C-29-L,
BEEBE 36N-29C-L, BEEBE 36N-29B-L & BEEBE 36C-29-L

* No existing wells within disturbance area *