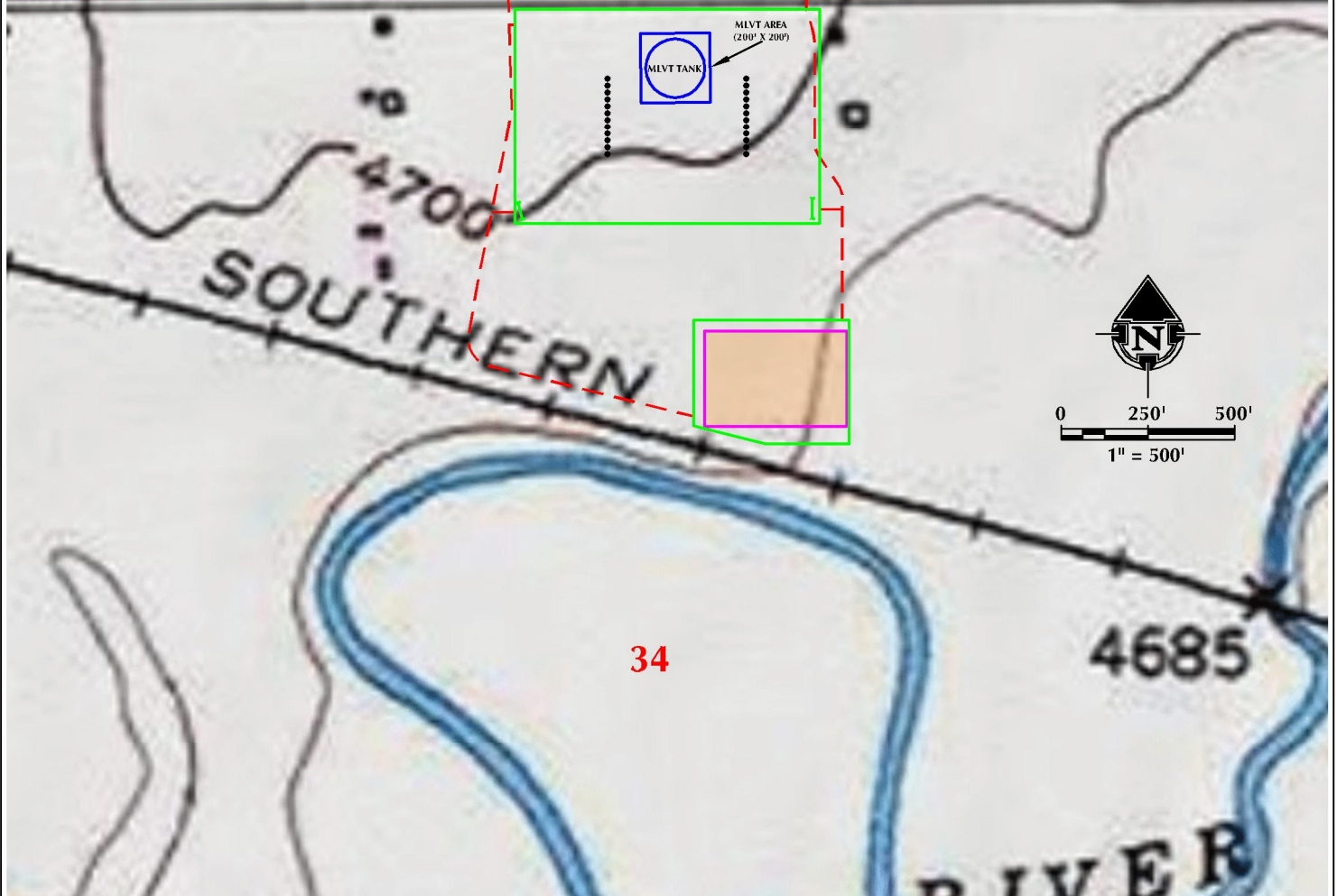


**T6N
R66W**

27

O STREET (CR 64)



LEGEND

- | | | |
|--|---|--|
| ● PROPOSED WELL | DISTURBANCE AREA | ROAD - IMPROVED - EXISTING |
| - - - ACCESS ROAD | PROPOSED FACILITY | - - - ROAD - PRIMITIVE - EXISTING |
| SECTION LINE | MLVT AREA | ROAD - HIGHWAY - EXISTING |

PAD - BEEBE 3-34

ACCESS ROAD MAP
BEEBE 25N-26B-M, BEEBE 25C-26-M, BEEBE 11N-26C-M, BEEBE 11N-26A-M,
BEEBE 11C-26-M, BEEBE 23N-26C-M, BEEBE 23C-26-M, BEEBE 14N-26B-M,
BEEBE 14C-26-M, BEEBE 36N-26B-M, BEEBE 36C-26-M, BEEBE 36N-26C-M,
BEEBE 25C-29-L, BEEBE 25N-29C-L, BEEBE 25N-29A-L, BEEBE 10N-29C-L,
BEEBE 10N-29B-L, BEEBE 23C-29-L, BEEBE 23N-29A-L, BEEBE 15N-29B-L,
BEEBE 15C-29-L, BEEBE 36N-29C-L, BEEBE 36N-29B-L & BEEBE 36C-29-L
LOCATED IN SECTION 34, T6N, R66W, 6TH P.M.
WELD COUNTY, COLORADO

 **SYNERGY**
RESOURCES CORPORATION
1625 Broadway, Suite 300
Denver, Colorado 80202



CONSULTING, LLC

SHERIDAN OFFICE
1095 Saberton Avenue
Sheridan, Wyoming 82801
Phone 307-674-0609

LOVELAND OFFICE
1635 Foxtrail Drive, Suite 204
Loveland, Colorado 80538
Phone 970-776-4331

SCALE:	1" = 500ft	NAD83 CO-Nft
DRAWN:	CDJ	DATE: 12/12/16
REVISED:	CDJ	DATE: 1/2/17