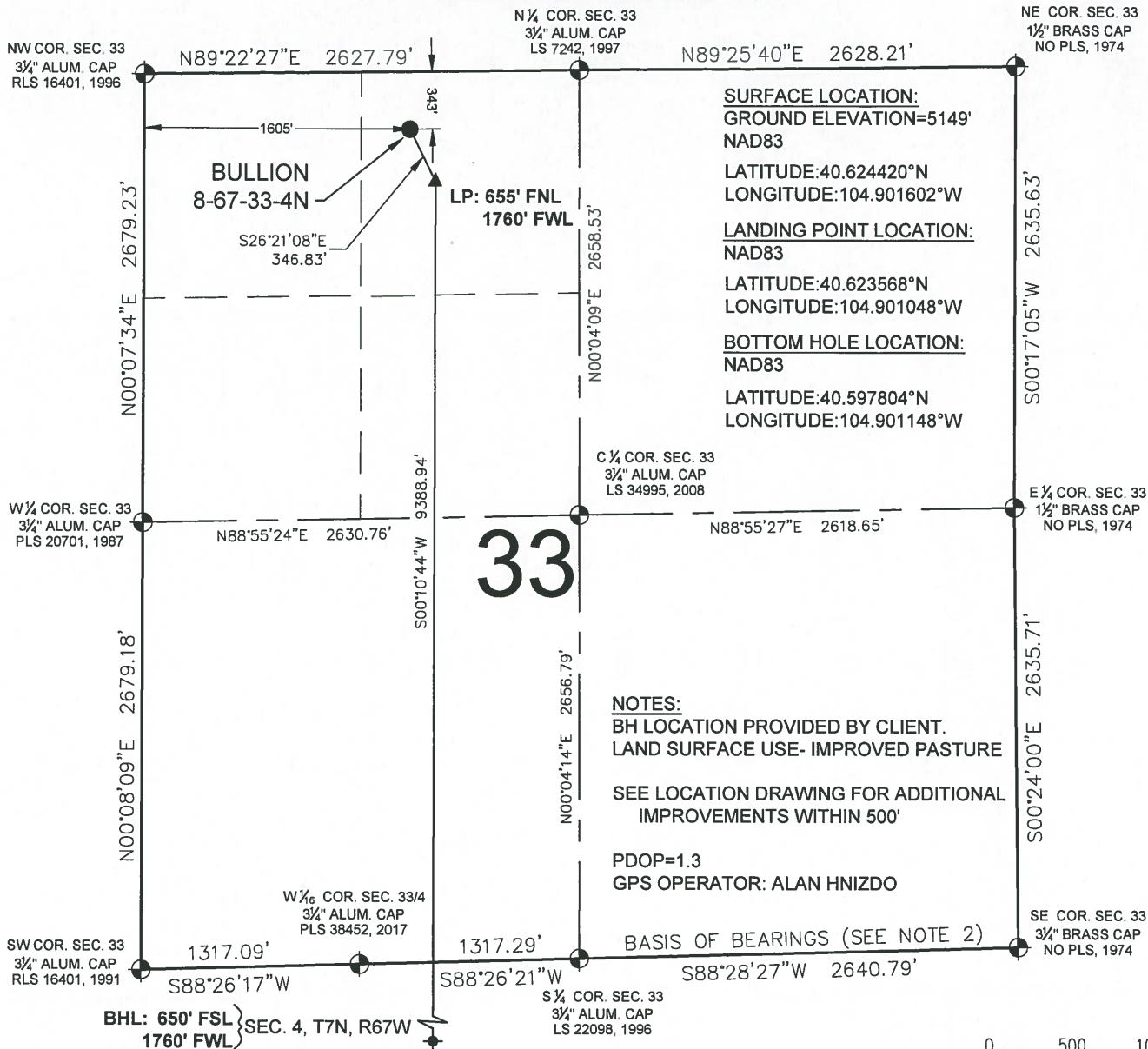


BULLION 8-67-33-4N WELL LOCATION CERTIFICATE



WELL BULLION 8-67-33-4N TO BE LOCATED 343' FNL & 1605' FWL

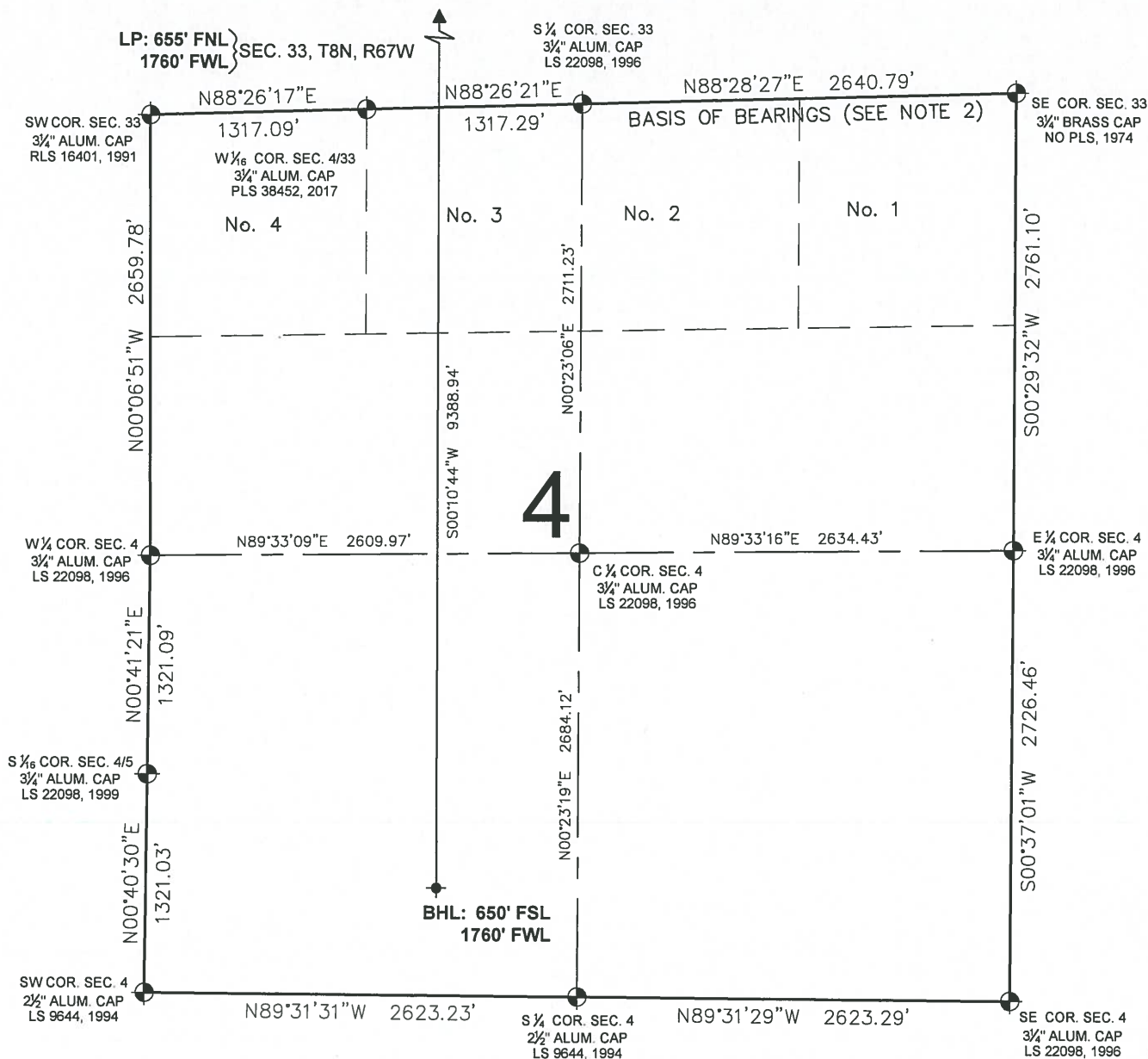
I, BRIAN C. RITZ, A LICENSED PROFESSIONAL LAND SURVEYOR IN THE STATE OF COLORADO DO HEREBY CERTIFY TO **ENERPLUS RESOURCES (USA) CORPORATION**, THAT THE SURVEY AND WELL LOCATION CERTIFICATE SHOWN HEREON WERE DONE BY ME OR UNDER MY DIRECT SUPERVISION AND THAT THE DRAWING SHOWN HEREON ACCURATELY DEPICTS THE PROPOSED LOCATION OF THE WELL. THIS CERTIFICATE DOES NOT REPRESENT A LAND SURVEY PLAT OR IMPROVEMENT SURVEY PLAT AS DEFINED BY C.R.S. 380-02 AND CANNOT BE RELIED UPON TO DETERMINE OWNERSHIP.

BRIAN C. RITZ, PLS 38452
COLORADO LICENSED PROFESSIONAL LAND SURVEYOR
FOR AND ON BEHALF OF P.F.S., LLC



SHEET 1 OF 2

BULLION 8-67-33-4N WELL LOCATION CERTIFICATE



LEGEND

- ⊕ = EXISTING MONUMENT
- = CALCULATED POSITION
- = PROPOSED WELL
- ◆ = EXISTING WELL
- ⬮ = BOTTOM HOLE
- ▲ = LANDING POINT
- LP = LANDING POINT
- BHL = BOTTOM HOLE LOCATION

BRIAN C. RITZ, PLS 38452
COLORADO LICENSED PROFESSIONAL LAND SURVEYOR
FOR AND ON BEHALF OF P.F.S., LLC



SHEET 2 OF 2

FIELD DATE:

01-17-17

DRAWING DATE:

02-09-17

BY:

MDC

CHECKED BY:

IJM

WELL NAME:

BULLION 8-67-33-4N

SURFACE LOCATION:

NE 1/4 NW 1/4 SEC. 33, T8N, R67W, 6TH P.M.

WELD COUNTY, COLORADO

PREPARED FOR:

enerPLUS