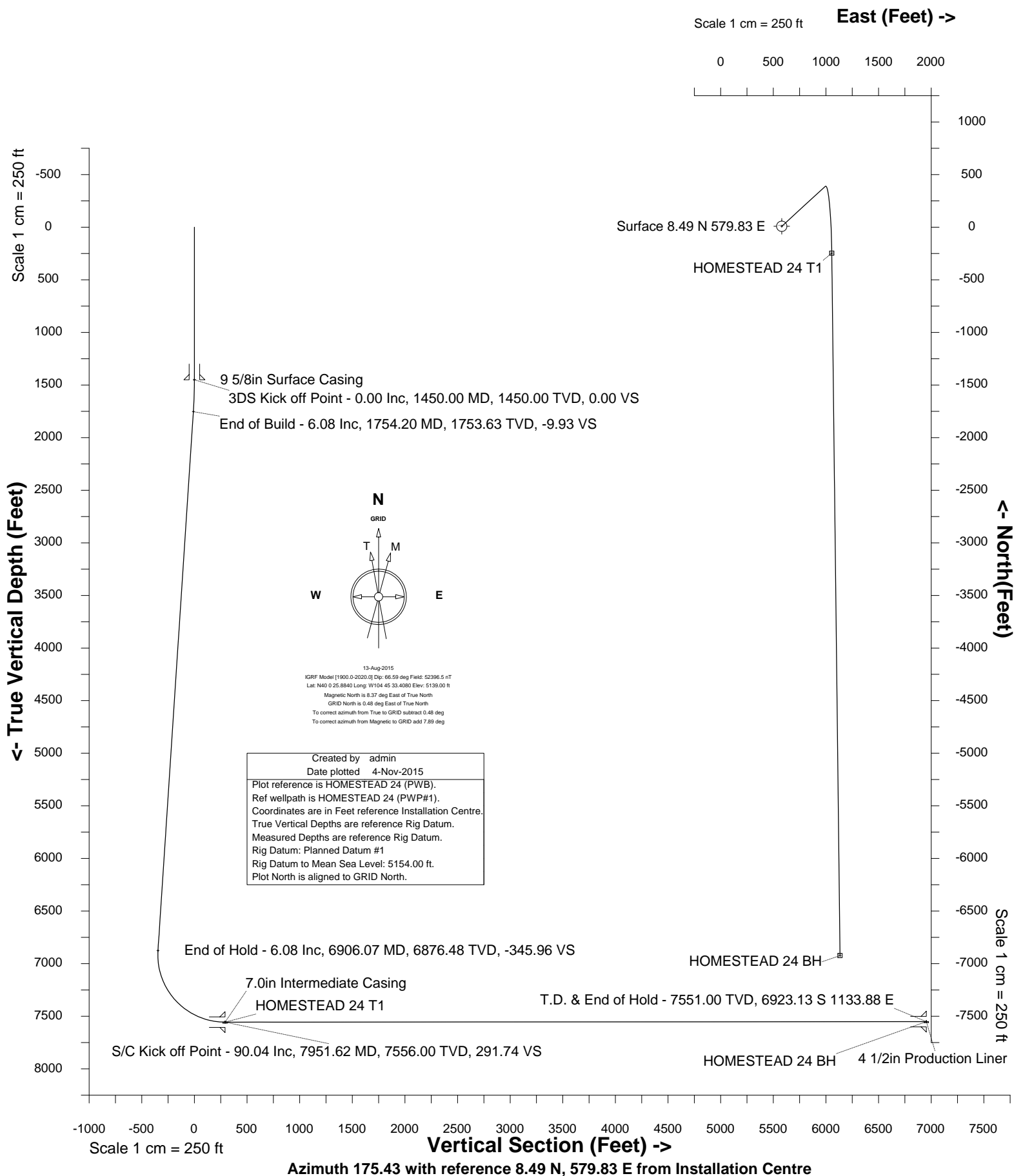




Petro Operating Company

Location	Weld County, CO	Slot	HOMESTEAD 24
Field	Wattenberg	Well	HOMESTEAD 24
Installation	Homestead	Wellbore	HOMESTEAD 24 (PWB)





SYSDRILL
Well Design Combined Report
Wellbore: HOMESTEAD 24 (PWB)

Wellhead Details							
Name	Latitude	Longitude	Northing	Easting	North	East	Slot Elevation Above Ground
HOMESTEAD 24	40.00720000	-104.75721000	1246341.0665	3208070.8827	8.49N	579.83E	0.00

Declination		
Date	Source	Time
13-Aug-2015	IGRF Model [1900.0-2020.0]	08:38

Installation Details						
Name	Installation Position (Latitude)	Installation Position (Longitude)	Northing	Easting	Coord System Name	North Alignment
Homestead	40.00719000	-104.75928000	1246332.5735	3207491.0767	CO83-NF on NORTH AMERICAN DATUM 1983 datum	Grid

Summary Wellpath									
MD[ft]	Inc[deg]	Azi[deg]	TVD[ft]	North[ft]	East[ft]	Dogleg [deg/100ft]	Vertical Section[ft]	Northing	Easting
23.00	0.00	0.000	23.00	0.00N	0.00E		0.00	1246341.07	3208070.88
1450.00	0.00	47.450	1450.00	0.00N	0.00E	==>	0.00	1246341.07	3208070.88
14629.04	90.04	179.330	7551.00	6931.62S	554.06E	==>	6953.73	1239409.70	3208624.92

Interpolated Wellpath								
MD[ft]	Inc[deg]	Azi[deg]	TVD[ft]	North[ft]	East[ft]	Dogleg [deg/100ft]	Vertical Section[ft]	All Station Comments
0.00	0.00	0.000	0.00	0.00N	0.00E		0.00	Rig Datum Slot Datum
23.00	0.00	0.000	23.00	0.00N	0.00E	==>	0.00	
100.00	0.00	0.000	100.00	0.00N	0.00E	==>	0.00	
200.00	0.00	0.000	200.00	0.00N	0.00E	==>	0.00	
300.00	0.00	0.000	300.00	0.00N	0.00E	==>	0.00	
400.00	0.00	0.000	400.00	0.00N	0.00E	==>	0.00	
500.00	0.00	0.000	500.00	0.00N	0.00E	==>	0.00	
600.00	0.00	0.000	600.00	0.00N	0.00E	==>	0.00	
700.00	0.00	0.000	700.00	0.00N	0.00E	==>	0.00	
800.00	0.00	0.000	800.00	0.00N	0.00E	==>	0.00	
900.00	0.00	0.000	900.00	0.00N	0.00E	==>	0.00	
1000.00	0.00	0.000	1000.00	0.00N	0.00E	==>	0.00	
1100.00	0.00	0.000	1100.00	0.00N	0.00E	==>	0.00	
1200.00	0.00	0.000	1200.00	0.00N	0.00E	==>	0.00	
1300.00	0.00	0.000	1300.00	0.00N	0.00E	==>	0.00	
1400.00	0.00	0.000	1400.00	0.00N	0.00E	==>	0.00	9 5/8in Surface Casing
1450.00	0.00	47.450	1450.00	0.00N	0.00E	==>	0.00	
1500.00	1.00	47.450	1500.00	0.30N	0.32E	2.00	-0.27	
1600.00	3.00	47.450	1599.93	2.65N	2.89E	2.00	-2.42	
1700.00	5.00	47.450	1699.68	7.37N	8.03E	2.00	-6.71	
1800.00	6.08	47.450	1799.17	14.19N	15.46E	==>	-12.92	
1900.00	6.08	47.450	1898.61	21.36N	23.27E	==>	-19.44	
2000.00	6.08	47.450	1998.04	28.53N	31.08E	==>	-25.96	
2100.00	6.08	47.450	2097.48	35.70N	38.89E	==>	-32.48	
2200.00	6.08	47.450	2196.92	42.86N	46.70E	==>	-39.01	
2300.00	6.08	47.450	2296.35	50.03N	54.50E	==>	-45.53	
2400.00	6.08	47.450	2395.79	57.20N	62.31E	==>	-52.05	
2500.00	6.08	47.450	2495.23	64.36N	70.12E	==>	-58.57	
2600.00	6.08	47.450	2594.66	71.53N	77.93E	==>	-65.10	
2700.00	6.08	47.450	2694.10	78.70N	85.74E	==>	-71.62	
2800.00	6.08	47.450	2793.54	85.87N	93.54E	==>	-78.14	
2900.00	6.08	47.450	2892.97	93.03N	101.35E	==>	-84.66	
3000.00	6.08	47.450	2992.41	100.20N	109.16E	==>	-91.18	
3100.00	6.08	47.450	3091.85	107.37N	116.97E	==>	-97.71	
3200.00	6.08	47.450	3191.29	114.53N	124.78E	==>	-104.23	
3300.00	6.08	47.450	3290.72	121.70N	132.58E	==>	-110.75	
3400.00	6.08	47.450	3390.16	128.87N	140.39E	==>	-117.27	
3500.00	6.08	47.450	3489.60	136.04N	148.20E	==>	-123.80	
3600.00	6.08	47.450	3589.03	143.20N	156.01E	==>	-130.32	

All data is in Feet unless otherwise stated
Coordinates are from Slot MD's are from Rig and TVD's are from Rig (Planned Datum #1 5154.0ft above Mean Sea Level)
Vertical Section is from 0.00N 0.00E on azimuth 175.430 degrees
Bottom hole distance is 6953.73 Feet on azimuth 175.43 degrees from Wellhead
Calculation method uses Minimum Curvature method
Prepared by Integrated Petroleum Technologies, Inc.
Date Printed: 4-Nov-2015



SYSDRILL
Well Design Combined Report
Wellbore: HOMESTEAD 24 (PWB)

Interpolated Wellpath								
MD[ft]	Inc[deg]	Azi[deg]	TVD[ft]	North[ft]	East[ft]	Dogleg [deg/100ft]	Vertical Section[ft]	All Station Comments
3700.00	6.08	47.450	3688.47	150.37N	163.82E	==>	-136.84	
3800.00	6.08	47.450	3787.91	157.54N	171.62E	==>	-143.36	
3900.00	6.08	47.450	3887.34	164.71N	179.43E	==>	-149.89	
4000.00	6.08	47.450	3986.78	171.87N	187.24E	==>	-156.41	
4100.00	6.08	47.450	4086.22	179.04N	195.05E	==>	-162.93	
4200.00	6.08	47.450	4185.65	186.21N	202.86E	==>	-169.45	
4300.00	6.08	47.450	4285.09	193.37N	210.66E	==>	-175.97	
4400.00	6.08	47.450	4384.53	200.54N	218.47E	==>	-182.50	
4500.00	6.08	47.450	4483.96	207.71N	226.28E	==>	-189.02	
4600.00	6.08	47.450	4583.40	214.88N	234.09E	==>	-195.54	
4700.00	6.08	47.450	4682.84	222.04N	241.90E	==>	-202.06	
4800.00	6.08	47.450	4782.27	229.21N	249.70E	==>	-208.59	
4900.00	6.08	47.450	4881.71	236.38N	257.51E	==>	-215.11	
5000.00	6.08	47.450	4981.15	243.54N	265.32E	==>	-221.63	
5100.00	6.08	47.450	5080.58	250.71N	273.13E	==>	-228.15	
5200.00	6.08	47.450	5180.02	257.88N	280.94E	==>	-234.67	
5300.00	6.08	47.450	5279.46	265.05N	288.74E	==>	-241.20	
5400.00	6.08	47.450	5378.89	272.21N	296.55E	==>	-247.72	
5500.00	6.08	47.450	5478.33	279.38N	304.36E	==>	-254.24	
5600.00	6.08	47.450	5577.77	286.55N	312.17E	==>	-260.76	
5700.00	6.08	47.450	5677.20	293.72N	319.98E	==>	-267.29	
5800.00	6.08	47.450	5776.64	300.88N	327.78E	==>	-273.81	
5900.00	6.08	47.450	5876.08	308.05N	335.59E	==>	-280.33	
6000.00	6.08	47.450	5975.51	315.22N	343.40E	==>	-286.85	
6100.00	6.08	47.450	6074.95	322.38N	351.21E	==>	-293.38	
6200.00	6.08	47.450	6174.39	329.55N	359.02E	==>	-299.90	
6300.00	6.08	47.450	6273.82	336.72N	366.82E	==>	-306.42	
6400.00	6.08	47.450	6373.26	343.89N	374.63E	==>	-312.94	
6500.00	6.08	47.450	6472.70	351.05N	382.44E	==>	-319.46	
6600.00	6.08	47.450	6572.13	358.22N	390.25E	==>	-325.99	
6700.00	6.08	47.450	6671.57	365.39N	398.06E	==>	-332.51	
6800.00	6.08	47.450	6771.01	372.55N	405.86E	==>	-339.03	
6900.00	6.08	47.450	6870.44	379.72N	413.67E	==>	-345.55	
7000.00	6.32	133.510	6970.03	379.97N	421.57E	9.00	-345.17	
7100.00	14.13	160.950	7068.42	364.61N	429.56E	9.00	-329.22	
7200.00	22.83	168.460	7163.18	334.00N	437.45E	9.00	-298.08	
7300.00	31.69	171.940	7251.99	288.90N	445.03E	9.00	-252.52	
7400.00	40.61	174.010	7332.66	230.40N	452.12E	9.00	-193.65	
7500.00	49.55	175.440	7403.21	159.96N	458.56E	9.00	-122.92	
7600.00	58.51	176.540	7461.89	79.31N	464.17E	9.00	-42.07	
7700.00	67.47	177.440	7507.25	9.57S	468.82E	9.00	46.89	
7800.00	76.44	178.230	7538.20	104.49S	472.39E	9.00	141.79	7.0in Intermediate Casing
7900.00	85.41	178.960	7553.95	203.10S	474.81E	9.00	240.29	
7951.00	89.99	179.320	7556.00	254.04S	475.57E	9.00	291.13	
8000.00	90.04	179.330	7555.96	303.04S	476.15E	==>	340.01	
8100.00	90.04	179.330	7555.89	403.03S	477.33E	==>	439.78	
8200.00	90.04	179.330	7555.81	503.02S	478.50E	==>	539.55	
8300.00	90.04	179.330	7555.74	603.02S	479.68E	==>	639.32	
8400.00	90.04	179.330	7555.66	703.01S	480.85E	==>	739.09	
8500.00	90.04	179.330	7555.59	803.00S	482.03E	==>	838.86	
8600.00	90.04	179.330	7555.51	903.00S	483.20E	==>	938.63	
8700.00	90.04	179.330	7555.44	1002.99S	484.38E	==>	1038.40	
8800.00	90.04	179.330	7555.36	1102.98S	485.55E	==>	1138.16	
8900.00	90.04	179.330	7555.29	1202.98S	486.73E	==>	1237.93	
9000.00	90.04	179.330	7555.21	1302.97S	487.90E	==>	1337.70	
9100.00	90.04	179.330	7555.14	1402.96S	489.08E	==>	1437.47	
9200.00	90.04	179.330	7555.07	1502.96S	490.25E	==>	1537.24	
9300.00	90.04	179.330	7554.99	1602.95S	491.43E	==>	1637.01	
9400.00	90.04	179.330	7554.92	1702.94S	492.60E	==>	1736.78	
9500.00	90.04	179.330	7554.84	1802.93S	493.78E	==>	1836.55	
9600.00	90.04	179.330	7554.77	1902.93S	494.95E	==>	1936.31	

All data is in Feet unless otherwise stated
Coordinates are from Slot MD's are from Rig and TVD's are from Rig (Planned Datum #1 5154.0ft above Mean Sea Level)
Vertical Section is from 0.00N 0.00E on azimuth 175.430 degrees
Bottom hole distance is 6953.73 Feet on azimuth 175.43 degrees from Wellhead
Calculation method uses Minimum Curvature method
Prepared by Integrated Petroleum Technologies, Inc.
Date Printed: 4-Nov-2015



SYSDRILL
Well Design Combined Report
Wellbore: HOMESTEAD 24 (PWB)

Interpolated Wellpath								
MD[ft]	Inc[deg]	Azi[deg]	TVD[ft]	North[ft]	East[ft]	Dogleg [deg/100ft]	Vertical Section[ft]	All Station Comments
9700.00	90.04	179.330	7554.69	2002.92S	496.13E	==>	2036.08	
9800.00	90.04	179.330	7554.62	2102.91S	497.30E	==>	2135.85	
9900.00	90.04	179.330	7554.54	2202.91S	498.48E	==>	2235.62	
10000.00	90.04	179.330	7554.47	2302.90S	499.66E	==>	2335.39	
10100.00	90.04	179.330	7554.39	2402.89S	500.83E	==>	2435.16	
10200.00	90.04	179.330	7554.32	2502.89S	502.01E	==>	2534.93	
10300.00	90.04	179.330	7554.24	2602.88S	503.18E	==>	2634.70	
10400.00	90.04	179.330	7554.17	2702.87S	504.36E	==>	2734.46	
10500.00	90.04	179.330	7554.09	2802.87S	505.53E	==>	2834.23	
10600.00	90.04	179.330	7554.02	2902.86S	506.71E	==>	2934.00	
10700.00	90.04	179.330	7553.94	3002.85S	507.88E	==>	3033.77	
10800.00	90.04	179.330	7553.87	3102.84S	509.06E	==>	3133.54	
10900.00	90.04	179.330	7553.79	3202.84S	510.23E	==>	3233.31	
11000.00	90.04	179.330	7553.72	3302.83S	511.41E	==>	3333.08	
11100.00	90.04	179.330	7553.64	3402.82S	512.58E	==>	3432.85	
11200.00	90.04	179.330	7553.57	3502.82S	513.76E	==>	3532.62	
11300.00	90.04	179.330	7553.49	3602.81S	514.93E	==>	3632.38	
11400.00	90.04	179.330	7553.42	3702.80S	516.11E	==>	3732.15	
11500.00	90.04	179.330	7553.34	3802.80S	517.28E	==>	3831.92	
11600.00	90.04	179.330	7553.27	3902.79S	518.46E	==>	3931.69	
11700.00	90.04	179.330	7553.19	4002.78S	519.63E	==>	4031.46	
11800.00	90.04	179.330	7553.12	4102.78S	520.81E	==>	4131.23	
11900.00	90.04	179.330	7553.04	4202.77S	521.98E	==>	4231.00	
12000.00	90.04	179.330	7552.97	4302.76S	523.16E	==>	4330.77	
12100.00	90.04	179.330	7552.89	4402.75S	524.34E	==>	4430.53	
12200.00	90.04	179.330	7552.82	4502.75S	525.51E	==>	4530.30	
12300.00	90.04	179.330	7552.74	4602.74S	526.69E	==>	4630.07	
12400.00	90.04	179.330	7552.67	4702.73S	527.86E	==>	4729.84	
12500.00	90.04	179.330	7552.59	4802.73S	529.04E	==>	4829.61	
12600.00	90.04	179.330	7552.52	4902.72S	530.21E	==>	4929.38	
12700.00	90.04	179.330	7552.44	5002.71S	531.39E	==>	5029.15	
12800.00	90.04	179.330	7552.37	5102.71S	532.56E	==>	5128.92	
12900.00	90.04	179.330	7552.29	5202.70S	533.74E	==>	5228.68	
13000.00	90.04	179.330	7552.22	5302.69S	534.91E	==>	5328.45	
13100.00	90.04	179.330	7552.14	5402.68S	536.09E	==>	5428.22	
13200.00	90.04	179.330	7552.07	5502.68S	537.26E	==>	5527.99	
13300.00	90.04	179.330	7552.00	5602.67S	538.44E	==>	5627.76	
13400.00	90.04	179.330	7551.92	5702.66S	539.61E	==>	5727.53	
13500.00	90.04	179.330	7551.85	5802.66S	540.79E	==>	5827.30	
13600.00	90.04	179.330	7551.77	5902.65S	541.96E	==>	5927.07	
13700.00	90.04	179.330	7551.70	6002.64S	543.14E	==>	6026.84	
13800.00	90.04	179.330	7551.62	6102.64S	544.31E	==>	6126.60	
13900.00	90.04	179.330	7551.55	6202.63S	545.49E	==>	6226.37	
14000.00	90.04	179.330	7551.47	6302.62S	546.66E	==>	6326.14	
14100.00	90.04	179.330	7551.40	6402.62S	547.84E	==>	6425.91	
14200.00	90.04	179.330	7551.32	6502.61S	549.02E	==>	6525.68	
14300.00	90.04	179.330	7551.25	6602.60S	550.19E	==>	6625.45	
14400.00	90.04	179.330	7551.17	6702.59S	551.37E	==>	6725.22	
14500.00	90.04	179.330	7551.10	6802.59S	552.54E	==>	6824.99	
14600.00	90.04	179.330	7551.02	6902.58S	553.72E	==>	6924.75	
14629.04	90.04	179.330	7551.00	6931.62S	554.06E	==>	6953.73	4 1/2in Production Liner

All data is in Feet unless otherwise stated
Coordinates are from Slot MD's are from Rig and TVD's are from Rig (Planned Datum #1 5154.0ft above Mean Sea Level)
Vertical Section is from 0.00N 0.00E on azimuth 175.430 degrees
Bottom hole distance is 6953.73 Feet on azimuth 175.43 degrees from Wellhead
Calculation method uses Minimum Curvature method
Prepared by Integrated Petroleum Technologies, Inc.
Date Printed: 4-Nov-2015



SYSDRILL
Well Design Combined Report
Wellbore: HOMESTEAD 24 (PWB)

Hole Sections

Diameter [in]	Start MD[ft]	Start TVD[ft]	Start North[ft]	Start East[ft]	End MD[ft]	End TVD[ft]	End North[ft]	End East[ft]
13 1/2	23.00	23.00	0.00N	0.00E	1450.00	1450.00	0.00N	0.00E
8 3/4	1450.00	1450.00	0.00N	0.00E	7951.00	7556.00	254.04S	475.57E
6 1/8	7951.00	7556.00	254.04S	475.57E	14629.04	7551.00	6931.62S	554.06E

Casings

Name	Top MD[ft]	Top TVD[ft]	Top North[ft]	Top East[ft]	Shoe MD[ft]	Shoe TVD[ft]	Shoe North[ft]	Shoe East[ft]
9 5/8in Surface Casing	23.00	23.00	0.00N	0.00E	1450.00	1450.00	0.00N	0.00E
7.0in Intermediate Casing	23.00	23.00	0.00N	0.00E	7951.00	7556.00	254.04S	475.57E
4 1/2in Production Liner	6954.00	6924.22	381.79N	417.92E	14629.04	7551.00	6931.62S	554.06E

Targets

Name	North[ft]	East[ft]	TVD[ft]	Latitude	Longitude	Northing	Easting
HOMESTEAD 24 BH	6931.62S	554.06E	7551.00	39.98816000	-104.75544000	1239409.70	3208624.92
HOMESTEAD 24 T1	254.66S	475.58E	7556.00	40.00649000	-104.75552000	1246086.41	3208546.45

Survey Tool Program

Reference	Survey Name	MD[ft]	TVD[ft]	Survey Tool	Error Model
400945	Planned	14629.04	7551.00	ISCWSA MWD	Rev 3 + Fixed Rig + Rotating

Notes

All data is in Feet unless otherwise stated
Coordinates are from Slot MD's are from Rig and TVD's are from Rig (Planned Datum #1 5154.0ft above Mean Sea Level)
Vertical Section is from 0.00N 0.00E on azimuth 175.430 degrees
Bottom hole distance is 6953.73 Feet on azimuth 175.43 degrees from Wellhead
Calculation method uses Minimum Curvature method
Prepared by Integrated Petroleum Technologies, Inc.
Date Printed: 4-Nov-2015



SYSDRILL
Closest Approach + Clearance Factor Summary Report
Wellbore: HOMESTEAD 24 (PWB)

Ellipse separations are reported ONLY if BOTH wells have uncertainty data
Only Depth and Magnetic Reference Field error terms are correlated across tie points
Scan limit is calculated on CENTRE to CENTRE distance
Summary data uses Closest Approach clearance calculation for all minima
Hole size/Casings ARE included
Hole size/Casings are NOT subtracted from Centre-Centre distance
Confidence limit of 95.00% / 2.80 SD.

Wellbore		
Name	Created	Last Revised
HOMESTEAD 24 (PWB)	18-Aug-2015	24-Sep-2015

Well		
Name	Government ID	Last Revised
HOMESTEAD 24		18-Aug-2015

Slot						
Name	Latitude	Longitude	Grid Northing	Grid Easting	North	East
HOMESTEAD 24	40.00720000	-104.75721000	1246341.0665	3208070.8827	8.49N	579.83E

Installation						
Name	Installation Position (Latitude)	Installation Position (Longitude)	Easting	Northing	Coord System Name	North Alignment
Homestead	40.00719000	-104.75928000	3207491.0767	1246332.5735	CO83-NF on NORTH AMERICAN DATUM 1983 datum	Grid

Clearance Summary							
Offset WellName	Separation [ft]	MD[ft]	Diverging From[ft]	Ellipse Separation [ft]	Ellipse MD[ft]	Clearance Factor	Clearance MD[ft]
HOMESTEAD 23	14.01	1450.17	1450.17	-44.53	14629.04	0.84	14629.04
HOMESTEAD 22	30.81	1450.17	14628.03	-20.07	14628.03	0.94	14628.03
HOMESTEAD 21	47.62	1450.17	1450.17	38.35	1433.76	1.36	14629.04
HOMESTEAD 20	61.63	1450.17	1450.17	52.36	1433.76	1.91	14629.04
HOMESTEAD 19	78.44	1450.17	1450.17	69.17	1433.76	2.28	14629.04
HOMESTEAD 18	95.25	1450.17	14629.04	85.97	1433.76	2.71	14629.04
HOMESTEAD 17	112.05	1450.17	1450.17	102.78	1433.76	3.23	14629.04
HOMESTEAD 16	126.06	1450.17	1450.17	116.79	1433.76	3.63	14629.04
HOMESTEAD 15	142.87	1450.17	14627.85	133.59	1433.76	4.07	14629.04
HOMESTEAD 14	159.68	1450.17	1450.17	150.40	1433.76	4.57	14629.04
BERGMAN #1	161.27	10823.00	10823.00	53.83	10833.37	1.50	10833.37
HOMESTEAD 13	173.68	1448.00	1448.00	164.33	1448.00	4.98	14629.04
HOMESTEAD 12	403.39	1450.17	14629.04	394.11	1433.76	5.50	14629.04
HOMESTEAD 11	420.20	1450.17	14629.03	410.91	1433.76	6.04	14629.04
HOMESTEAD 10	437.01	1450.17	14628.57	427.72	1433.76	6.53	14629.04
HOMESTEAD 9	453.82	1450.17	14629.04	444.53	1433.76	7.04	14629.04
HOMESTEAD 8	467.82	1450.17	14629.04	458.54	1433.76	7.58	14629.04
HOMESTEAD 7	484.63	1450.17	14629.04	475.35	1433.76	8.07	14629.04
HOMESTEAD 6	501.44	1450.17	14629.04	492.15	1433.76	8.58	14629.04
HOMESTEAD 5	515.45	1450.17	14628.89	506.16	1433.76	9.11	14629.04
HOMESTEAD 4	532.25	1450.17	14629.04	522.97	1433.76	9.60	14629.04
HOMESTEAD 3	549.06	1450.17	14629.04	539.77	1433.76	10.11	14629.04
HOMESTEAD 2	565.88	1450.17	14629.04	556.59	1433.76	10.64	14629.04

All data is in Feet unless otherwise stated
Coordinates are from Slot MD's are from Rig and TVD's are from Rig (Planned Datum #1 5154.0ft above Mean Sea Level)
Vertical Section is from 0.00N 0.00E on azimuth 175.430 degrees
Prepared by Integrated Petroleum Technologies, Inc.
Date Printed: 4-Nov-2015

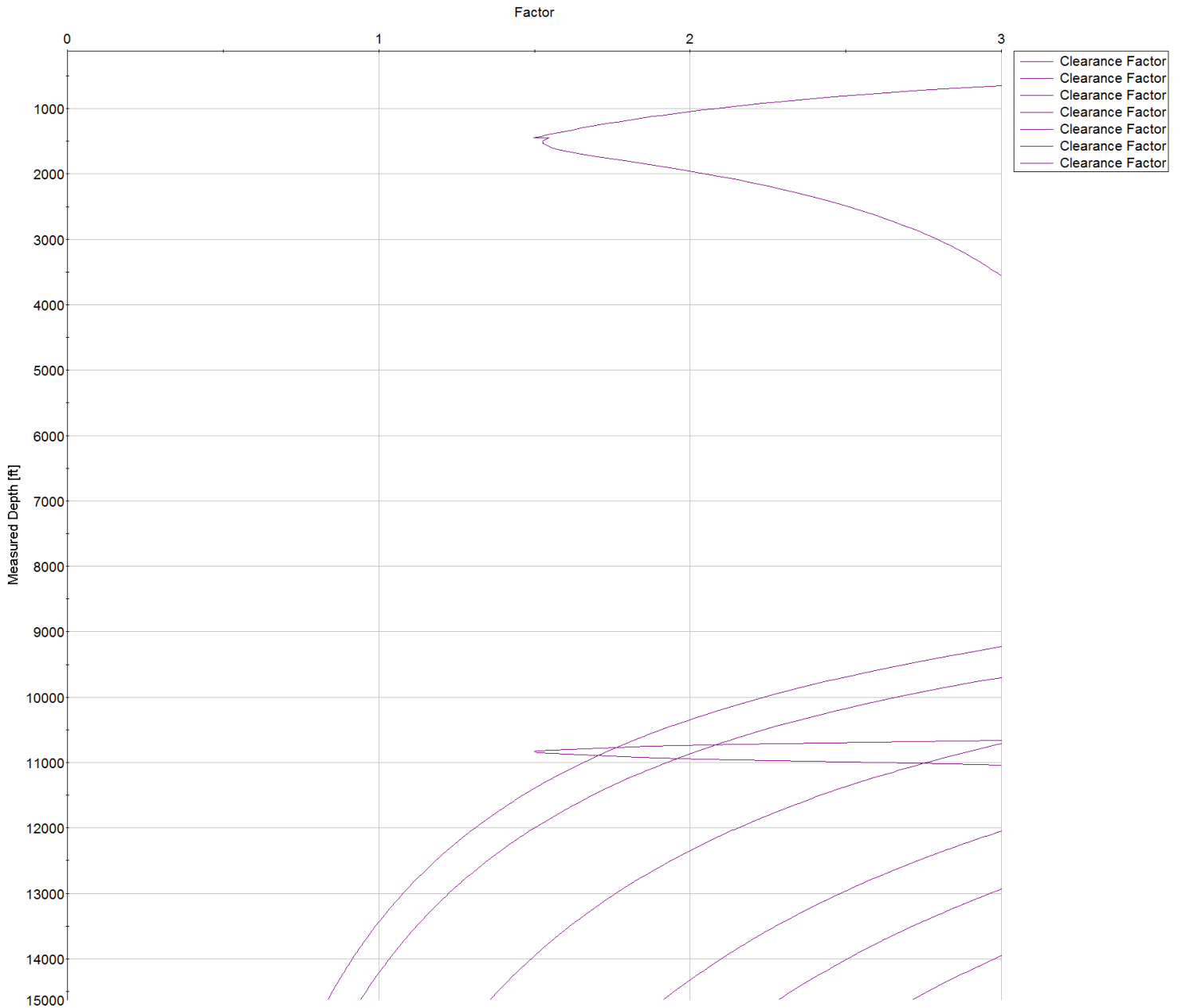


SYSDRILL
Closest Approach + Clearance Factor Summary Report
Wellbore: HOMESTEAD 24 (PWB)

Clearance Summary							
Offset WellName	Separation [ft]	MD[ft]	Diverging From[ft]	Ellipse Separation [ft]	Ellipse MD[ft]	Clearance Factor	Clearance MD[ft]
HOMESTEAD 1	579.89	1442.00	14629.04	570.55	1442.00	11.12	14629.04
WILLARD, JOHN W. GAS UNIT #1	1371.64	4058.43	4058.43	1337.29	4780.22	28.73	7023.00
UPRR 50 PAN AM M #1	1450.89	9127.33	9127.33	1382.26	9160.14	19.16	9652.27
BEN STEVENSON GAS UNIT #1	2272.54	14629.04	14629.04	2170.29	14629.04	22.22	14629.04
BRIGHTON COMPANY #1	2506.96	13458.04	13458.04	2334.72	13523.66	13.98	14015.78
BERGMAN #2	3146.54	13747.63	13747.63	2967.25	13818.93	17.00	14360.27
SHAW A #1	4911.70	14629.04	14629.04	4829.60	14629.04	59.83	14629.04
VISTA USX #WW33-08D	5413.89	5295.19	5295.19	5363.07	5354.36	72.61	12194.92

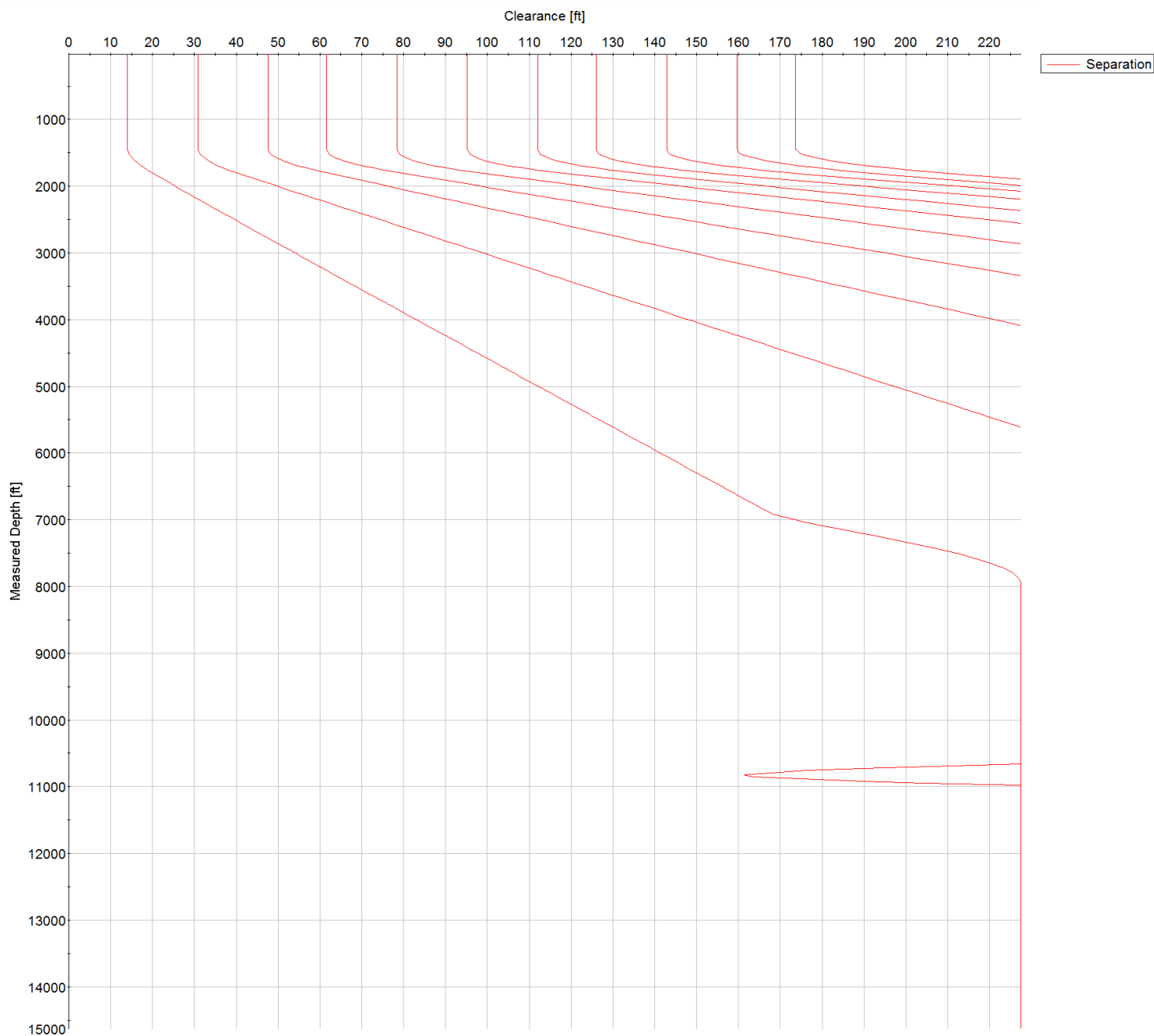


SYSDRILL
Closest Approach + Clearance Factor Summary Report
Wellbore: HOMESTEAD 24 (PWB)



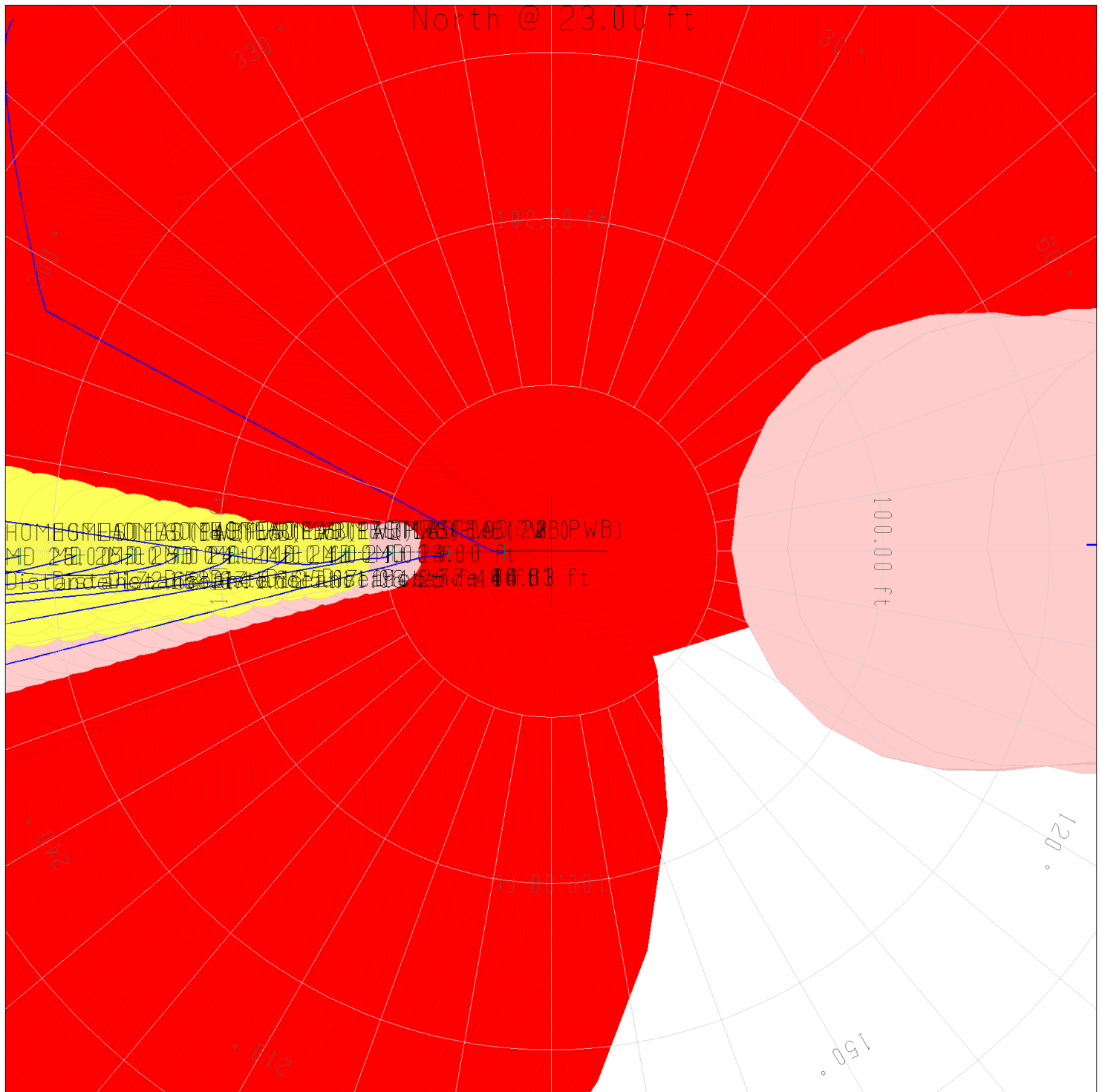


SYSDRILL
Closest Approach + Clearance Factor Summary Report
Wellbore: HOMESTEAD 24 (PWB)





SYSDRILL
Closest Approach + Clearance Factor Summary Report
Wellbore: HOMESTEAD 24 (PWB)



All data is in Feet unless otherwise stated
Coordinates are from Slot MD's are from Rig and TVD's are from Rig (Planned Datum #1 5154.0ft above Mean Sea Level)
Vertical Section is from 0.00N 0.00E on azimuth 175.430 degrees
Prepared by Integrated Petroleum Technologies, Inc.
Date Printed: 4-Nov-2015