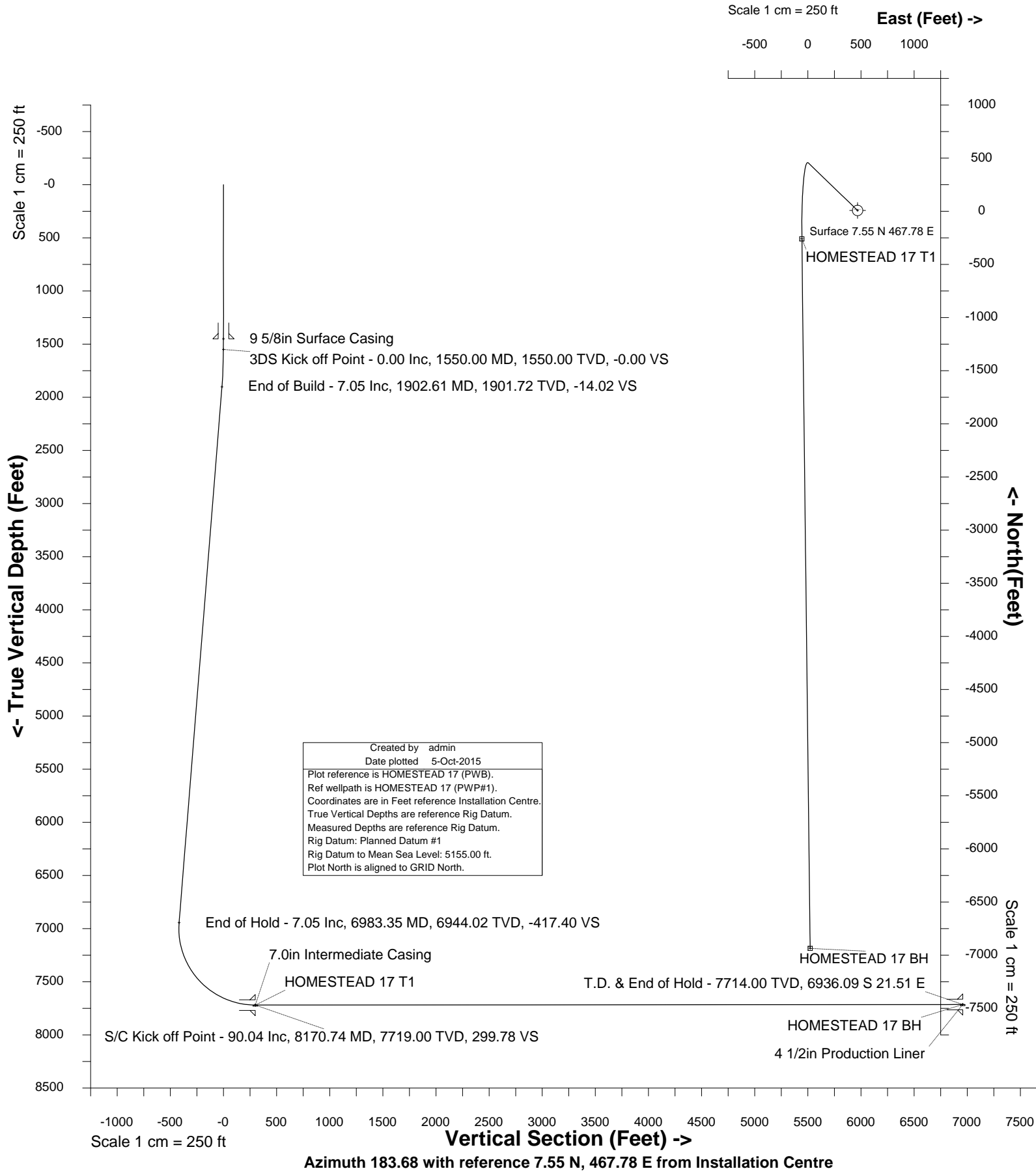


Location	Weld County, CO	Slot	HOMESTEAD 17
Field	Wattenberg	Well	HOMESTEAD 17
Installation	Homestead	Wellbore	HOMESTEAD 17 (PWB)





SYSDRILL  
Well Design Combined Report  
Wellbore: HOMESTEAD 17 (PWB)

Wellhead Details							
Name	Latitude	Longitude	Northing	Easting	North	East	Slot Elevation Above Ground
HOMESTEAD 17	40.00720000	-104.75761000	1246340.1282	3207958.8370	7.55N	467.78E	0.00

Declination		
Date	Source	Time
13-Aug-2015	IGRF Model [1900.0-2020.0]	08:38

Installation Details						
Name	Installation Position (Latitude)	Installation Position (Longitude)	Northing	Easting	Coord System Name	North Alignment
Homestead	40.00719000	-104.75928000	1246332.5735	3207491.0767	CO83-NF on NORTH AMERICAN DATUM 1983 datum	Grid

Summary Wellpath									
MD[ft]	Inc[deg]	Azi[deg]	TVD[ft]	North[ft]	East[ft]	Dogleg [deg/100ft]	Vertical Section[ft]	Northing	Easting
23.00	0.00	0.000	23.00	0.00N	0.00E		0.00	1246340.13	3207958.84
1550.00	0.00	313.970	1550.00	0.00N	0.00E	==>	0.00	1246340.13	3207958.84
1902.61	7.05	313.970	1901.72	15.05N	15.60W	2.00	-14.02	1246355.18	3207943.24
6983.35	7.05	313.970	6944.02	448.13N	464.54W	==>	-417.41	1246788.24	3207494.31
8170.74	90.04	179.330	7719.00	266.68S	524.44W	8.00	299.77	1246073.46	3207434.41
14848.16	90.04	179.330	7714.00	6943.64S	446.27W	==>	6957.97	1239396.74	3207512.59

Interpolated Wellpath								
MD[ft]	Inc[deg]	Azi[deg]	TVD[ft]	North[ft]	East[ft]	Dogleg [deg/100ft]	Vertical Section[ft]	All Station Comments
0.00	0.00	0.000	0.00	0.00N	0.00E		0.00	Rig Datum Slot Datum
23.00	0.00	0.000	23.00	0.00N	0.00E	==>	0.00	
100.00	0.00	0.000	100.00	0.00N	0.00E	==>	0.00	
200.00	0.00	0.000	200.00	0.00N	0.00E	==>	0.00	
300.00	0.00	0.000	300.00	0.00N	0.00E	==>	0.00	
400.00	0.00	0.000	400.00	0.00N	0.00E	==>	0.00	
500.00	0.00	0.000	500.00	0.00N	0.00E	==>	0.00	
600.00	0.00	0.000	600.00	0.00N	0.00E	==>	0.00	
700.00	0.00	0.000	700.00	0.00N	0.00E	==>	0.00	
800.00	0.00	0.000	800.00	0.00N	0.00E	==>	0.00	
900.00	0.00	0.000	900.00	0.00N	0.00E	==>	0.00	
1000.00	0.00	0.000	1000.00	0.00N	0.00E	==>	0.00	
1100.00	0.00	0.000	1100.00	0.00N	0.00E	==>	0.00	
1200.00	0.00	0.000	1200.00	0.00N	0.00E	==>	0.00	
1300.00	0.00	0.000	1300.00	0.00N	0.00E	==>	0.00	
1400.00	0.00	0.000	1400.00	0.00N	0.00E	==>	0.00	9 5/8in Surface Casing 3DS Kick off Point
1450.00	0.00	0.000	1450.00	0.00N	0.00E	==>	0.00	
1500.00	0.00	0.000	1500.00	0.00N	0.00E	==>	0.00	
1550.00	0.00	313.970	1550.00	0.00N	0.00E	==>	0.00	
1600.00	1.00	313.970	1600.00	0.30N	0.31W	2.00	-0.28	
1700.00	3.00	313.970	1699.93	2.73N	2.83W	2.00	-2.54	End of Build
1800.00	5.00	313.970	1799.68	7.57N	7.85W	2.00	-7.05	
1900.00	7.00	313.970	1899.13	14.83N	15.37W	2.00	-13.81	
1902.61	7.05	313.970	1901.72	15.05N	15.60W	2.00	-14.02	
2000.00	7.05	313.970	1998.37	23.35N	24.20W	==>	-21.75	
2100.00	7.05	313.970	2097.62	31.87N	33.04W	==>	-29.69	
2200.00	7.05	313.970	2196.86	40.40N	41.88W	==>	-37.63	
2300.00	7.05	313.970	2296.10	48.92N	50.71W	==>	-45.57	
2400.00	7.05	313.970	2395.35	57.44N	59.55W	==>	-53.51	
2500.00	7.05	313.970	2494.59	65.97N	68.38W	==>	-61.45	
2600.00	7.05	313.970	2593.83	74.49N	77.22W	==>	-69.39	
2700.00	7.05	313.970	2693.08	83.02N	86.06W	==>	-77.33	
2800.00	7.05	313.970	2792.32	91.54N	94.89W	==>	-85.27	
2900.00	7.05	313.970	2891.56	100.06N	103.73W	==>	-93.21	
3000.00	7.05	313.970	2990.81	108.59N	112.57W	==>	-101.15	
3100.00	7.05	313.970	3090.05	117.11N	121.40W	==>	-109.09	

All data is in Feet unless otherwise stated  
Coordinates are from Slot MD's are from Rig and TVD's are from Rig ( Planned Datum #1 5155.0ft above Mean Sea Level )  
Vertical Section is from 0.00N 0.00E on azimuth 183.680 degrees  
Bottom hole distance is 6957.97 Feet on azimuth 183.68 degrees from Wellhead  
Calculation method uses Minimum Curvature method  
Prepared by Integrated Petroleum Technologies, Inc.  
Date Printed: 5-Oct-2015



SYSDRILL  
Well Design Combined Report  
Wellbore: HOMESTEAD 17 (PWB)

Interpolated Wellpath								
MD[ft]	Inc[deg]	Azi[deg]	TVD[ft]	North[ft]	East[ft]	Dogleg [deg/100ft]	Vertical Section[ft]	All Station Comments
3200.00	7.05	313.970	3189.30	125.64N	130.24W	==>	-117.03	
3300.00	7.05	313.970	3288.54	134.16N	139.07W	==>	-124.96	
3400.00	7.05	313.970	3387.78	142.69N	147.91W	==>	-132.90	
3500.00	7.05	313.970	3487.03	151.21N	156.75W	==>	-140.84	
3600.00	7.05	313.970	3586.27	159.73N	165.58W	==>	-148.78	
3700.00	7.05	313.970	3685.51	168.26N	174.42W	==>	-156.72	
3800.00	7.05	313.970	3784.76	176.78N	183.25W	==>	-164.66	
3900.00	7.05	313.970	3884.00	185.31N	192.09W	==>	-172.60	
4000.00	7.05	313.970	3983.24	193.83N	200.93W	==>	-180.54	
4100.00	7.05	313.970	4082.49	202.35N	209.76W	==>	-188.48	
4200.00	7.05	313.970	4181.73	210.88N	218.60W	==>	-196.42	
4300.00	7.05	313.970	4280.97	219.40N	227.44W	==>	-204.36	
4400.00	7.05	313.970	4380.22	227.93N	236.27W	==>	-212.30	
4500.00	7.05	313.970	4479.46	236.45N	245.11W	==>	-220.24	
4600.00	7.05	313.970	4578.70	244.97N	253.94W	==>	-228.18	
4700.00	7.05	313.970	4677.95	253.50N	262.78W	==>	-236.12	
4800.00	7.05	313.970	4777.19	262.02N	271.62W	==>	-244.06	
4900.00	7.05	313.970	4876.43	270.55N	280.45W	==>	-252.00	
5000.00	7.05	313.970	4975.68	279.07N	289.29W	==>	-259.94	
5100.00	7.05	313.970	5074.92	287.59N	298.12W	==>	-267.88	
5200.00	7.05	313.970	5174.16	296.12N	306.96W	==>	-275.82	
5300.00	7.05	313.970	5273.41	304.64N	315.80W	==>	-283.76	
5400.00	7.05	313.970	5372.65	313.17N	324.63W	==>	-291.70	
5500.00	7.05	313.970	5471.89	321.69N	333.47W	==>	-299.64	
5600.00	7.05	313.970	5571.14	330.21N	342.31W	==>	-307.58	
5700.00	7.05	313.970	5670.38	338.74N	351.14W	==>	-315.52	
5800.00	7.05	313.970	5769.62	347.26N	359.98W	==>	-323.46	
5900.00	7.05	313.970	5868.87	355.79N	368.81W	==>	-331.40	
6000.00	7.05	313.970	5968.11	364.31N	377.65W	==>	-339.34	
6100.00	7.05	313.970	6067.36	372.83N	386.49W	==>	-347.28	
6200.00	7.05	313.970	6166.60	381.36N	395.32W	==>	-355.22	
6300.00	7.05	313.970	6265.84	389.88N	404.16W	==>	-363.16	
6400.00	7.05	313.970	6365.09	398.41N	412.99W	==>	-371.10	
6500.00	7.05	313.970	6464.33	406.93N	421.83W	==>	-379.04	
6600.00	7.05	313.970	6563.57	415.45N	430.67W	==>	-386.98	
6700.00	7.05	313.970	6662.82	423.98N	439.50W	==>	-394.92	
6800.00	7.05	313.970	6762.06	432.50N	448.34W	==>	-402.86	
6900.00	7.05	313.970	6861.30	441.03N	457.18W	==>	-410.80	
6983.35	7.05	313.970	6944.02	448.13N	464.54W	==>	-417.41	End of Hold
7000.00	6.19	305.110	6960.56	449.36N	466.01W	8.00	-418.54	
7100.00	6.67	228.170	7060.09	448.59N	474.76W	8.00	-417.21	
7200.00	13.35	201.100	7158.56	433.92N	483.26W	8.00	-402.03	
7300.00	20.97	192.610	7254.06	405.64N	491.34W	8.00	-373.29	
7400.00	28.79	188.550	7344.71	364.30N	498.84W	8.00	-331.55	
7500.00	36.68	186.120	7428.77	310.70N	505.61W	8.00	-277.63	
7600.00	44.61	184.450	7504.58	245.89N	511.53W	8.00	-212.57	
7700.00	52.55	183.200	7570.69	171.13N	516.48W	8.00	-137.65	
7800.00	60.51	182.190	7625.79	87.87N	520.37W	8.00	-54.31	
7900.00	68.47	181.320	7668.83	2.27S	523.10W	8.00	35.82	
8000.00	76.44	180.550	7698.95	97.53S	524.65W	8.00	130.98	
8100.00	84.41	179.830	7715.58	196.05S	524.96W	8.00	229.32	
8170.00	89.98	179.330	7719.00	265.94S	524.45W	8.00	299.03	
8170.74	90.04	179.330	7719.00	266.68S	524.44W	8.00	299.77	
8200.00	90.04	179.330	7718.98	295.94S	524.10W	==>	328.94	7.0in Intermediate Casing S/C Kick off Point/Target, HOMESTEAD 17 T1
8300.00	90.04	179.330	7718.90	395.93S	522.93W	==>	428.65	
8400.00	90.04	179.330	7718.83	495.92S	521.76W	==>	528.37	
8500.00	90.04	179.330	7718.75	595.92S	520.59W	==>	628.08	
8600.00	90.04	179.330	7718.68	695.91S	519.42W	==>	727.79	
8700.00	90.04	179.330	7718.60	795.90S	518.25W	==>	827.50	
8800.00	90.04	179.330	7718.53	895.90S	517.08W	==>	927.21	
8900.00	90.04	179.330	7718.45	995.89S	515.91W	==>	1026.93	
9000.00	90.04	179.330	7718.38	1095.88S	514.73W	==>	1126.64	

All data is in Feet unless otherwise stated  
Coordinates are from Slot MD's are from Rig and TVD's are from Rig ( Planned Datum #1 5155.0ft above Mean Sea Level )  
Vertical Section is from 0.00N 0.00E on azimuth 183.680 degrees  
Bottom hole distance is 6957.97 Feet on azimuth 183.68 degrees from Wellhead  
Calculation method uses Minimum Curvature method  
Prepared by Integrated Petroleum Technologies, Inc.  
Date Printed: 5-Oct-2015



SYSDRILL  
Well Design Combined Report  
Wellbore: HOMESTEAD 17 (PWB)

Interpolated Wellpath								
MD[ft]	Inc[deg]	Azi[deg]	TVD[ft]	North[ft]	East[ft]	Dogleg [deg/100ft]	Vertical Section[ft]	All Station Comments
9100.00	90.04	179.330	7718.30	1195.87S	513.56W	==>	1226.35	
9200.00	90.04	179.330	7718.23	1295.87S	512.39W	==>	1326.06	
9300.00	90.04	179.330	7718.15	1395.86S	511.22W	==>	1425.78	
9400.00	90.04	179.330	7718.08	1495.85S	510.05W	==>	1525.49	
9500.00	90.04	179.330	7718.00	1595.85S	508.88W	==>	1625.20	
9600.00	90.04	179.330	7717.93	1695.84S	507.71W	==>	1724.91	
9700.00	90.04	179.330	7717.85	1795.83S	506.54W	==>	1824.62	
9800.00	90.04	179.330	7717.78	1895.83S	505.37W	==>	1924.34	
9900.00	90.04	179.330	7717.71	1995.82S	504.20W	==>	2024.05	
10000.00	90.04	179.330	7717.63	2095.81S	503.03W	==>	2123.76	
10100.00	90.04	179.330	7717.56	2195.81S	501.86W	==>	2223.47	
10200.00	90.04	179.330	7717.48	2295.80S	500.69W	==>	2323.18	
10300.00	90.04	179.330	7717.41	2395.79S	499.51W	==>	2422.90	
10400.00	90.04	179.330	7717.33	2495.78S	498.34W	==>	2522.61	
10500.00	90.04	179.330	7717.26	2595.78S	497.17W	==>	2622.32	
10600.00	90.04	179.330	7717.18	2695.77S	496.00W	==>	2722.03	
10700.00	90.04	179.330	7717.11	2795.76S	494.83W	==>	2821.75	
10800.00	90.04	179.330	7717.03	2895.76S	493.66W	==>	2921.46	
10900.00	90.04	179.330	7716.96	2995.75S	492.49W	==>	3021.17	
11000.00	90.04	179.330	7716.88	3095.74S	491.32W	==>	3120.88	
11100.00	90.04	179.330	7716.81	3195.74S	490.15W	==>	3220.59	
11200.00	90.04	179.330	7716.73	3295.73S	488.98W	==>	3320.31	
11300.00	90.04	179.330	7716.66	3395.72S	487.81W	==>	3420.02	
11400.00	90.04	179.330	7716.58	3495.72S	486.64W	==>	3519.73	
11500.00	90.04	179.330	7716.51	3595.71S	485.47W	==>	3619.44	
11600.00	90.04	179.330	7716.43	3695.70S	484.29W	==>	3719.15	
11700.00	90.04	179.330	7716.36	3795.70S	483.12W	==>	3818.87	
11800.00	90.04	179.330	7716.28	3895.69S	481.95W	==>	3918.58	
11900.00	90.04	179.330	7716.21	3995.68S	480.78W	==>	4018.29	
12000.00	90.04	179.330	7716.13	4095.67S	479.61W	==>	4118.00	
12100.00	90.04	179.330	7716.06	4195.67S	478.44W	==>	4217.72	
12200.00	90.04	179.330	7715.98	4295.66S	477.27W	==>	4317.43	
12300.00	90.04	179.330	7715.91	4395.65S	476.10W	==>	4417.14	
12400.00	90.04	179.330	7715.83	4495.65S	474.93W	==>	4516.85	
12500.00	90.04	179.330	7715.76	4595.64S	473.76W	==>	4616.56	
12600.00	90.04	179.330	7715.68	4695.63S	472.59W	==>	4716.28	
12700.00	90.04	179.330	7715.61	4795.63S	471.42W	==>	4815.99	
12800.00	90.04	179.330	7715.53	4895.62S	470.25W	==>	4915.70	
12900.00	90.04	179.330	7715.46	4995.61S	469.07W	==>	5015.41	
13000.00	90.04	179.330	7715.38	5095.61S	467.90W	==>	5115.12	
13100.00	90.04	179.330	7715.31	5195.60S	466.73W	==>	5214.84	
13200.00	90.04	179.330	7715.23	5295.59S	465.56W	==>	5314.55	
13300.00	90.04	179.330	7715.16	5395.59S	464.39W	==>	5414.26	
13400.00	90.04	179.330	7715.08	5495.58S	463.22W	==>	5513.97	
13500.00	90.04	179.330	7715.01	5595.57S	462.05W	==>	5613.69	
13600.00	90.04	179.330	7714.93	5695.56S	460.88W	==>	5713.40	
13700.00	90.04	179.330	7714.86	5795.56S	459.71W	==>	5813.11	
13800.00	90.04	179.330	7714.78	5895.55S	458.54W	==>	5912.82	
13900.00	90.04	179.330	7714.71	5995.54S	457.37W	==>	6012.53	
14000.00	90.04	179.330	7714.64	6095.54S	456.20W	==>	6112.25	
14100.00	90.04	179.330	7714.56	6195.53S	455.03W	==>	6211.96	
14200.00	90.04	179.330	7714.49	6295.52S	453.85W	==>	6311.67	
14300.00	90.04	179.330	7714.41	6395.52S	452.68W	==>	6411.38	
14400.00	90.04	179.330	7714.34	6495.51S	451.51W	==>	6511.09	
14500.00	90.04	179.330	7714.26	6595.50S	450.34W	==>	6610.81	
14600.00	90.04	179.330	7714.19	6695.50S	449.17W	==>	6710.52	
14700.00	90.04	179.330	7714.11	6795.49S	448.00W	==>	6810.23	
14800.00	90.04	179.330	7714.04	6895.48S	446.83W	==>	6909.94	End of Hold/Target, 4 1/2in Production Liner, HOMESTEAD 17 BH
14848.16	90.04	179.330	7714.00	6943.64S	446.27W	==>	6957.97	

All data is in Feet unless otherwise stated  
Coordinates are from Slot MD's are from Rig and TVD's are from Rig ( Planned Datum #1 5155.0ft above Mean Sea Level )  
Vertical Section is from 0.00N 0.00E on azimuth 183.680 degrees  
Bottom hole distance is 6957.97 Feet on azimuth 183.68 degrees from Wellhead  
Calculation method uses Minimum Curvature method  
Prepared by Integrated Petroleum Technologies, Inc.  
Date Printed: 5-Oct-2015



SYS DRILL  
Well Design Combined Report  
Wellbore: HOMESTEAD 17 (PWB)

### Hole Sections

Diameter [in]	Start MD[ft]	Start TVD[ft]	Start North[ft]	Start East[ft]	End MD[ft]	End TVD[ft]	End North[ft]	End East[ft]
13 1/2	23.00	23.00	0.00N	0.00E	1450.00	1450.00	0.00N	0.00E
8 3/4	1450.00	1450.00	0.00N	0.00E	8170.00	7719.00	265.94S	524.45W
6 1/8	8170.00	7719.00	265.94S	524.45W	14848.16	7714.00	6943.64S	446.27W

### Casings

Name	Top MD[ft]	Top TVD[ft]	Top North[ft]	Top East[ft]	Shoe MD[ft]	Shoe TVD[ft]	Shoe North[ft]	Shoe East[ft]
9 5/8in Surface Casing	23.00	23.00	0.00N	0.00E	1450.00	1450.00	0.00N	0.00E
7.0in Intermediate Casing	23.00	23.00	0.00N	0.00E	8170.00	7719.00	265.94S	524.45W
4 1/2in Production Liner	7047.00	7007.35	450.73N	470.15W	14848.16	7714.00	6943.64S	446.27W

### Targets

Name	North[ft]	East[ft]	TVD[ft]	Latitude	Longitude	Northing	Easting
HOMESTEAD 17 BH	6943.64S	446.27W	7714.00	39.98815000	-104.75941000	1239396.74	3207512.59
HOMESTEAD 17 T1	266.68S	524.44W	7719.00	40.00648000	-104.75949000	1246073.46	3207434.41

### Survey Tool Program

Reference	Survey Name	MD[ft]	TVD[ft]	Survey Tool	Error Model
400768	Planned	14848.16	7714.00	ISCWSA MWD	Rev 3 + Fixed Rig + Rotating

### Notes

All data is in Feet unless otherwise stated  
Coordinates are from Slot MD's are from Rig and TVD's are from Rig ( Planned Datum #1 5155.0ft above Mean Sea Level )  
Vertical Section is from 0.00N 0.00E on azimuth 183.680 degrees  
Bottom hole distance is 6957.97 Feet on azimuth 183.68 degrees from Wellhead  
Calculation method uses Minimum Curvature method  
Prepared by Integrated Petroleum Technologies, Inc.  
Date Printed: 5-Oct-2015



SYSDRILL  
Closest Approach + Clearance Factor Summary Report  
Wellbore: HOMESTEAD 17 (PWB)

Ellipse separations are reported ONLY if BOTH wells have uncertainty data
Only Depth and Magnetic Reference Field error terms are correlated across tie points
Scan limit is calculated on CENTRE to CENTRE distance
Summary data uses Closest Approach clearance calculation for all minima
Hole size/Casings ARE included
Hole size/Casings are NOT subtracted from Centre-Centre distance
Confidence limit of 95.00% / 2.80 SD.

Wellbore		
Name	Created	Last Revised
HOMESTEAD 17 (PWB)	18-Aug-2015	24-Sep-2015

Well		
Name	Government ID	Last Revised
HOMESTEAD 17		18-Aug-2015

Slot						
Name	Latitude	Longitude	Grid Northing	Grid Easting	North	East
HOMESTEAD 17	40.00720000	-104.75761000	1246340.1282	3207958.8370	7.55N	467.78E

Installation						
Name	Installation Position (Latitude)	Installation Position (Longitude)	Easting	Northing	Coord System Name	North Alignment
Homestead	40.00719000	-104.75928000	3207491.0767	1246332.5735	CO83-NF on NORTH AMERICAN DATUM 1983 datum	Grid

Clearance Summary								
Offset WellName	Separation [ft]	MD[ft]	Diverging From[ft]	Ellipse Separation [ft]	Ellipse MD[ft]	Clearance Factor	Clearance MD[ft]	
HOMESTEAD 16	14.01	1525.00	8132.00	4.49	1550.00	1.17	14848.16	
HOMESTEAD 18	16.81	1550.00	8170.74	-39.63	14848.16	0.85	14848.16	
HOMESTEAD 15	30.82	1499.38	14848.16	21.43	1523.00	1.10	14848.16	
HOMESTEAD 19	33.62	1550.00	8192.29	23.91	1581.40	1.32	14848.16	
HOMESTEAD 14	47.62	1474.00	1474.00	38.35	1433.76	1.35	14848.16	
HOMESTEAD 20	50.42	1550.00	1550.00	40.68	1581.40	1.36	14848.16	
HOMESTEAD 13	61.63	1449.00	8192.29	52.27	1449.00	2.01	14848.16	
HOMESTEAD 21	64.43	1525.00	8167.64	54.77	1564.99	1.92	14848.16	
HOMESTEAD 22	81.24	1499.38	1499.38	71.80	1532.19	2.44	14848.16	
HOMESTEAD 23	98.05	1476.00	1476.00	88.76	1499.38	2.71	14848.16	
HOMESTEAD 24	112.05	1451.00	1451.00	102.79	1433.76	3.23	14848.16	
HOMESTEAD 12	273.75	2075.88	14848.16	261.05	2075.88	2.41	14848.16	
HOMESTEAD 11	294.14	2043.43	14848.16	281.65	2043.43	2.84	14848.16	
HOMESTEAD 10	313.58	1991.50	14848.16	301.32	2007.91	3.46	14848.16	
HOMESTEAD 9	332.41	1979.99	14848.16	320.32	1979.99	3.92	14848.16	
HOMESTEAD 8	350.33	1925.89	14848.16	338.48	1942.29	4.38	14848.16	
HOMESTEAD 7	369.47	1881.71	14848.16	357.81	1916.54	4.96	14848.16	
HOMESTEAD 6	388.03	1772.48	14848.16	376.84	1846.85	5.44	14848.16	
HOMESTEAD 5	403.39	1544.00	14848.16	393.61	1624.72	5.93	14848.16	
HOMESTEAD 4	420.20	1519.00	14848.16	410.72	1550.00	6.47	14848.16	
HOMESTEAD 3	437.01	1482.97	14848.16	427.64	1515.78	6.96	14848.16	
HOMESTEAD 2	453.83	1468.00	14848.16	444.54	1433.76	7.46	14848.16	
HOMESTEAD 1	467.84	1443.00	14848.16	458.49	1443.00	7.99	14848.16	

All data is in Feet unless otherwise stated  
Coordinates are from Slot MD's are from Rig and TVD's are from Rig ( Planned Datum #1 5155.0ft above Mean Sea Level )  
Vertical Section is from 0.00N 0.00E on azimuth 183.680 degrees  
Prepared by Integrated Petroleum Technologies, Inc.  
Date Printed: 5-Oct-2015

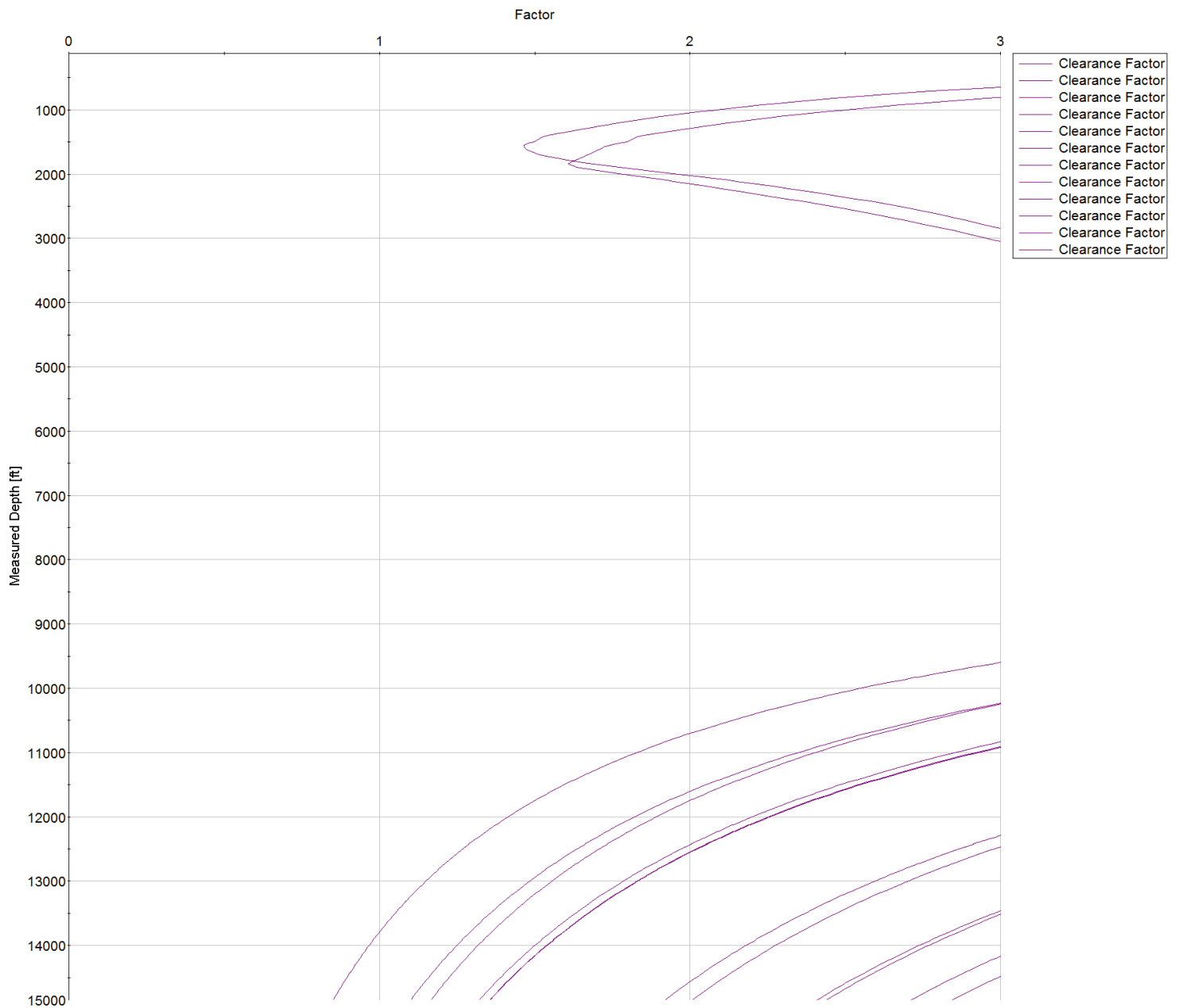


SYSDRILL  
Closest Approach + Clearance Factor Summary Report  
Wellbore: HOMESTEAD 17 (PWB)

Clearance Summary							
Offset WellName	Separation [ft]	MD[ft]	Diverging From[ft]	Ellipse Separation [ft]	Ellipse MD[ft]	Clearance Factor	Clearance MD[ft]
WILLARD, JOHN W. GAS UNIT #1	751.13	7060.40	7060.40	703.36	7060.40	15.67	7123.00
BERGMAN #1	1273.54	11041.94	11041.94	1165.90	11063.03	11.74	11177.86
BERGMAN #2	2034.13	13966.96	13966.96	1854.14	14023.00	11.00	14343.87
BEN STEVENSON GAS UNIT #1	2147.30	14848.16	14848.16	2075.50	14848.16	29.91	14848.16
UPRR 50 PAN AM M #1	2489.74	1550.00	9343.85	2473.31	1564.99	33.06	10357.65
BRIGHTON COMPANY #1	3619.36	13676.47	13676.47	3446.87	13753.31	20.03	14507.91
VISTA USX #WW33-08D	4463.05	7509.51	7509.51	4403.40	7503.31	59.23	11276.28
SHAW A #1	5420.93	14848.16	14848.16	5290.53	14848.16	41.57	14848.16



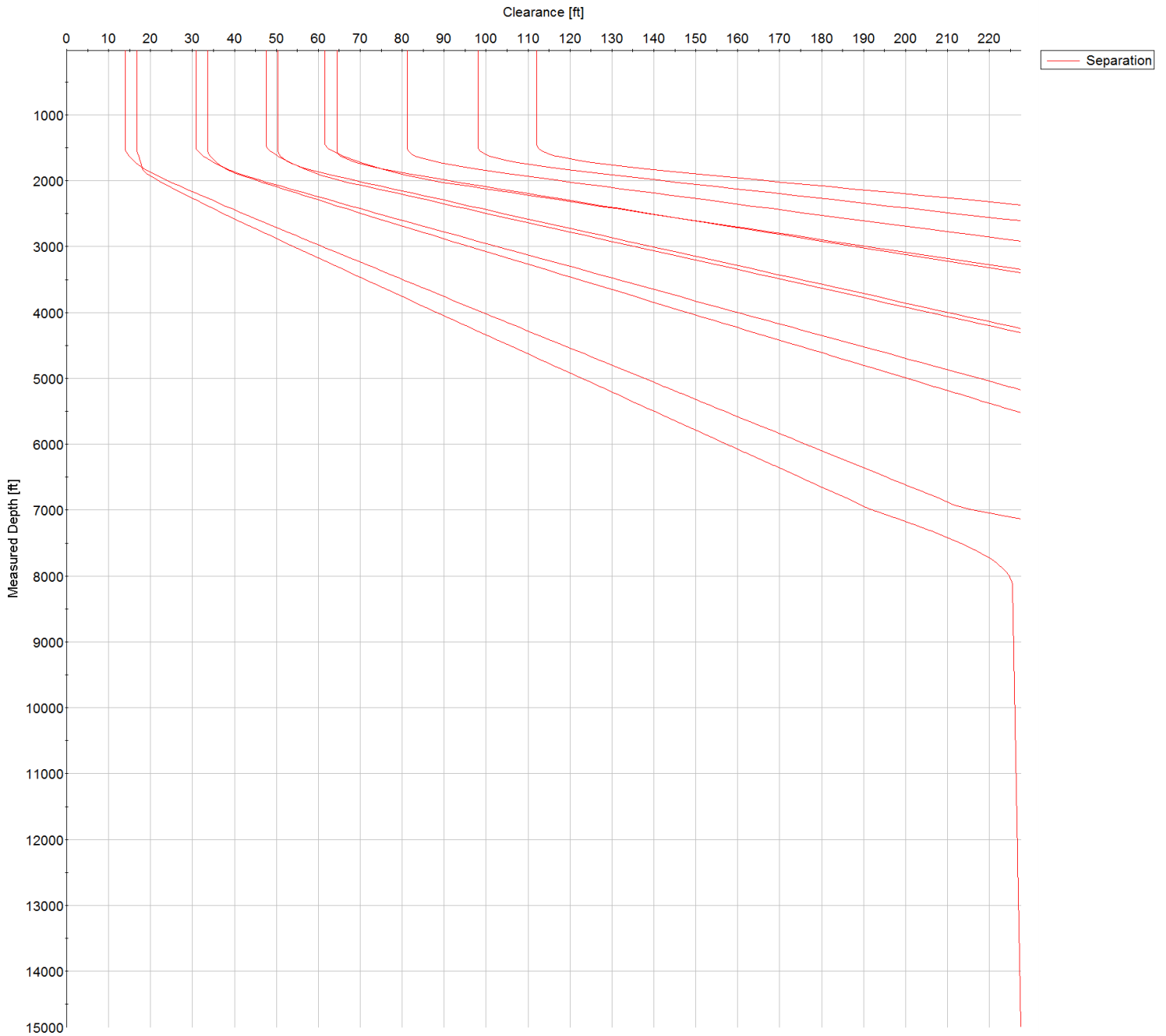
SYSDRILL  
Closest Approach + Clearance Factor Summary Report  
Wellbore: HOMESTEAD 17 (PWB)







SYSDRILL  
Closest Approach + Clearance Factor Summary Report  
Wellbore: HOMESTEAD 17 (PWB)



All data is in Feet unless otherwise stated  
Coordinates are from Slot MD's are from Rig and TVD's are from Rig ( Planned Datum #1 5155.0ft above Mean Sea Level )  
Vertical Section is from 0.00N 0.00E on azimuth 183.680 degrees  
Prepared by Integrated Petroleum Technologies, Inc.  
Date Printed: 5-Oct-2015

