

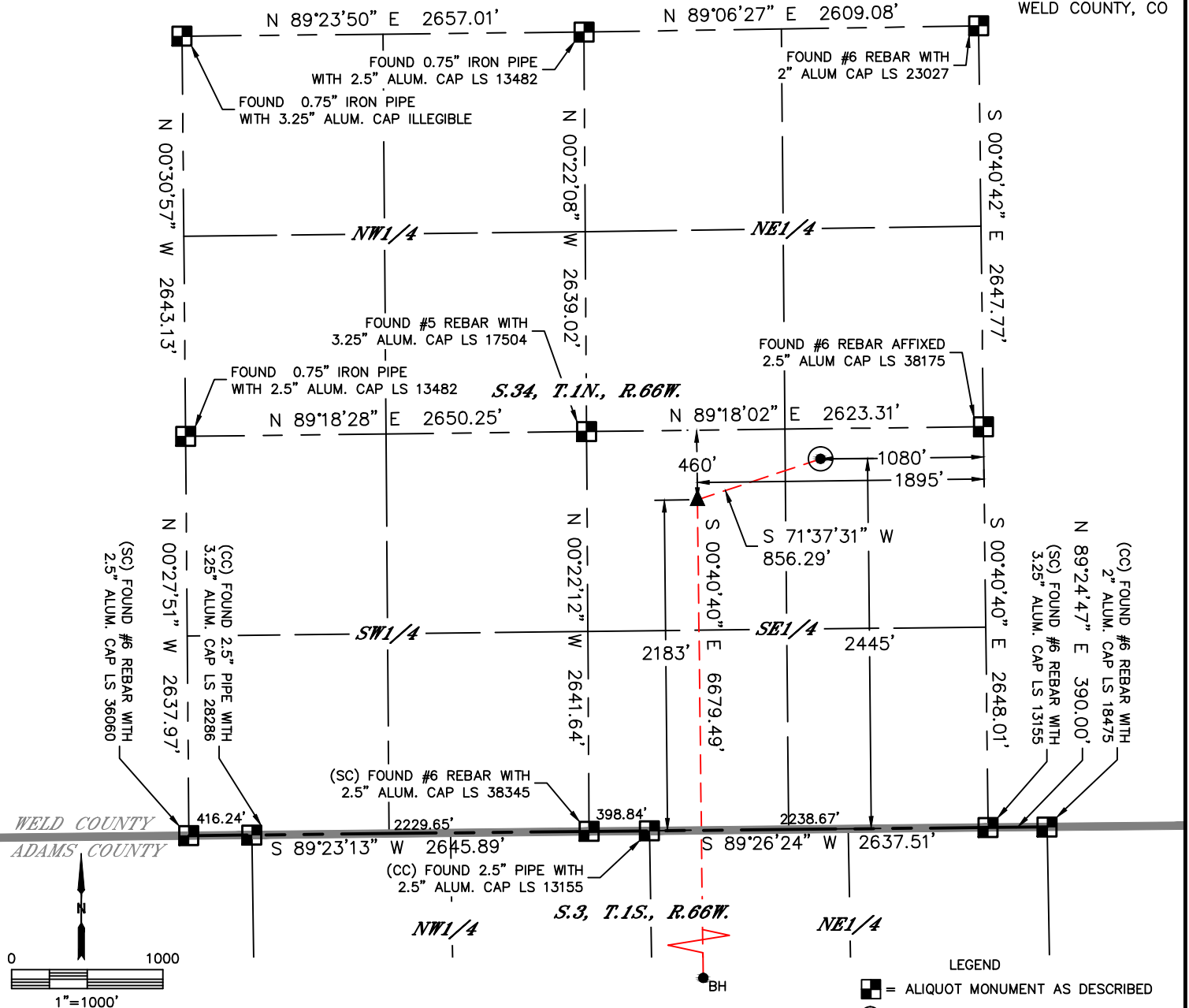


Lat40°, Inc. 6250 W. 10th Street, Unit 2, Greeley, CO 970-515-5294

WELL LOCATION CERTIFICATE

HOMESTEAD 15

SECTION: 34
TOWNSHIP: 1N
RANGE: 66W
6TH. P.M.
WELD COUNTY, CO



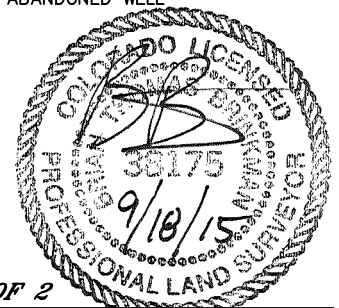
| | | | | | | |
|-----------------------------------|-----------|------------|------------------------|----------------|-----------------------|-----------|
| CLIENT: PETRO OPERATING CO. | | | LANDMAN: DEREK PETRIE | | | |
| INSTRUMENT OPERATOR: CHASE MILLER | | | SURVEY DATE: 7/24/2015 | | SURFACE USE: CROPLAND | |
| SHL FOOTAGE | SHL LAT ° | SHL LONG ° | SHL PDOP | SHL ELEV (FT.) | SHL 1/4/1/4 | SHL S-T-R |
| 2445 FSL 1080 FEL | 40.00720 | -104.75772 | 1.9 | 5133 | NESE | 34-1N-66 |

| | | | | | | |
|------------------|-----------|------------|-----------|----------|------------|----------|
| BHL FOOTAGE | BHL LAT ° | BHL LONG ° | BHL S-T-R | EP LAT ° | EP LONG ° | EP S-T-R |
| 460 FSL 2318 FEL | 39.98815 | -104.76054 | 3-1S-66 | 40.00648 | -104.76063 | 34-1N-66 |

NOTE:
1) Bearings shown are Grid Bearings of the Colorado State Plane Coordinate System, North Zone, North American Datum 1983. The lineal dimensions as contained herein are based upon the "U.S. Survey Foot."
2) Distances to section lines measured at 90 degrees from said section lines.
3) Ground elevations are based on an observed GPS elevation (NAVD 1988 DATUM).
4) Latitude and Longitude shown are (NAD 83 DATUM).
5) IMPROVEMENTS: See LOCATION DRAWING for all visible improvements within 500' of oil and gas location.
6) This map does not represent a boundary survey.

| NEAREST CULTURAL ITEMS | |
|----------------------------------|---------------|
| BUILDING | ±1297' SE |
| BUILDING UNIT | ±1297' SE |
| HIGH OCCUPANCY BUILDING UNIT | ±3010' SE |
| DESIGNATED OUTSIDE ACTIVITY AREA | 5280'+ |
| PUBLIC ROAD (ALTA STREET) | ±1294' SE |
| ABOVE GROUND UTILITY | ±1031' E |
| RAILROAD | 5280'+ |
| PROPERTY LINE | 1' S, L15, B1 |

- LEGEND
- = ALIQUOT MONUMENT AS DESCRIBED
 - = CALCULATED POSITION
 - = SURFACE HOLE LOCATION (SHL)
 - ▲ = ENTRY POINT LOCATION (EP)
 - BH = BOTTOM HOLE LOCATION (BHL)
 - ⊙ = EXISTING WELL
 - ⊙ = ABANDONED WELL



SHEET 1 OF 2

Brian T. Brinkman—On behalf of Lat40°, Inc.
Colorado Licensed Professional Land Surveyor No. 38175
DATE: 9/18/2015
PROJECT#: 2014230

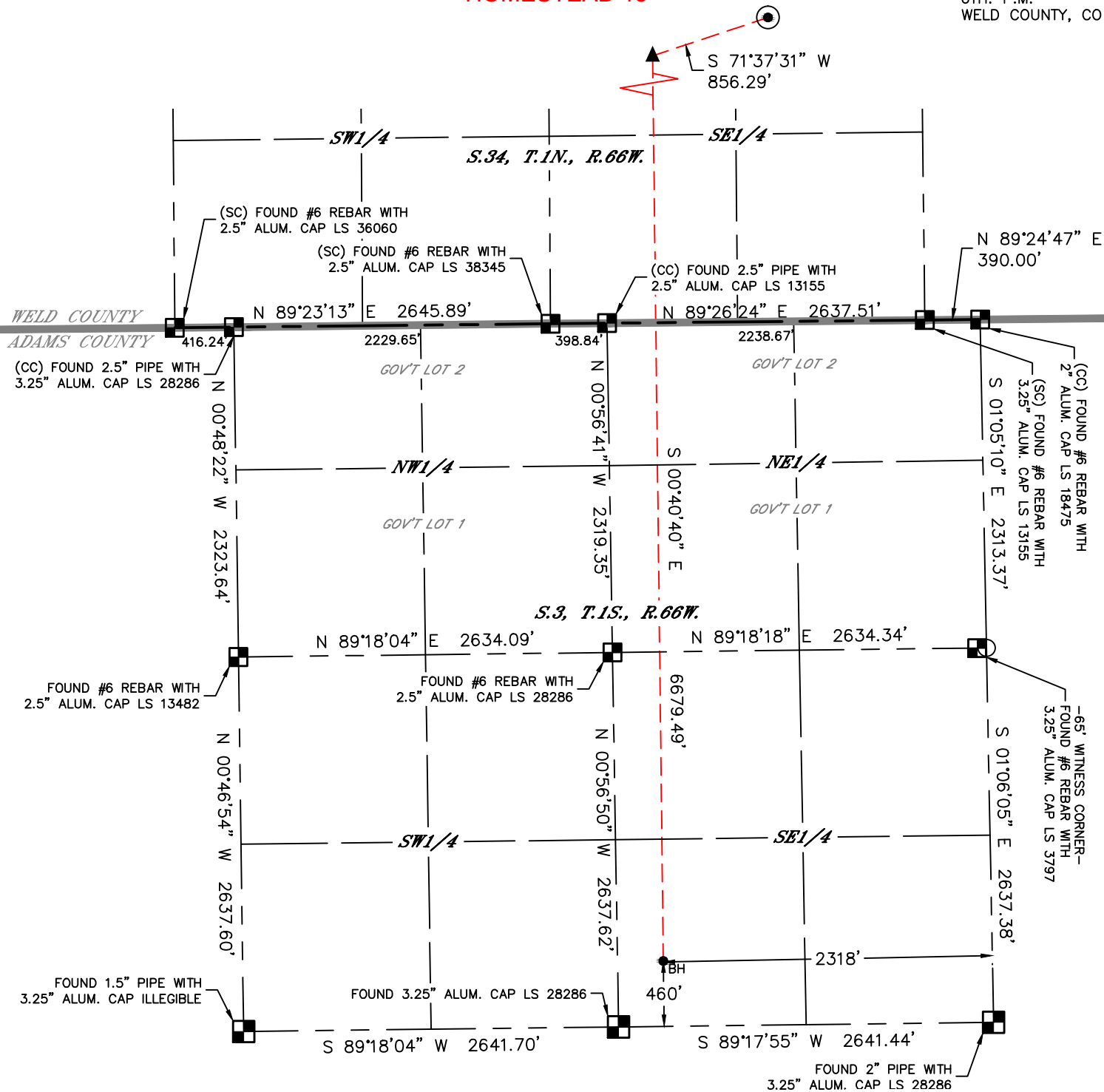


Lat40°, Inc. 6250 W. 10th Street, Unit 2, Greeley, CO 970-515-5294

WELL LOCATION CERTIFICATE

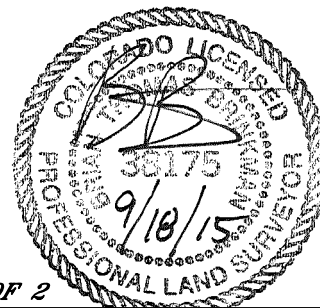
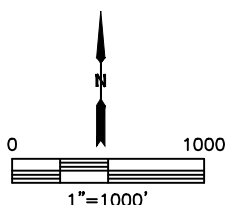
HOMESTEAD 15

SECTION: 34
TOWNSHIP: 1N
RANGE: 66W
6TH. P.M.
WELD COUNTY, CO



LEGEND

- = ALIQUOT MONUMENT AS DESCRIBED
- = CALCULATED POSITION
- = SURFACE HOLE LOCATION (SHL)
- ▲ = ENTRY POINT LOCATION (EP)
- = BOTTOM HOLE LOCATION (BHL)
- ⊙ = EXISTING WELL
- ⊙ = ABANDONED WELL



SHEET 2 OF 2

Brian T. Brinkman—On behalf of Lat40°, Inc.
Colorado Licensed Professional Land Surveyor No. 38175
DATE: 9/18/2015
PROJECT#: 2014230

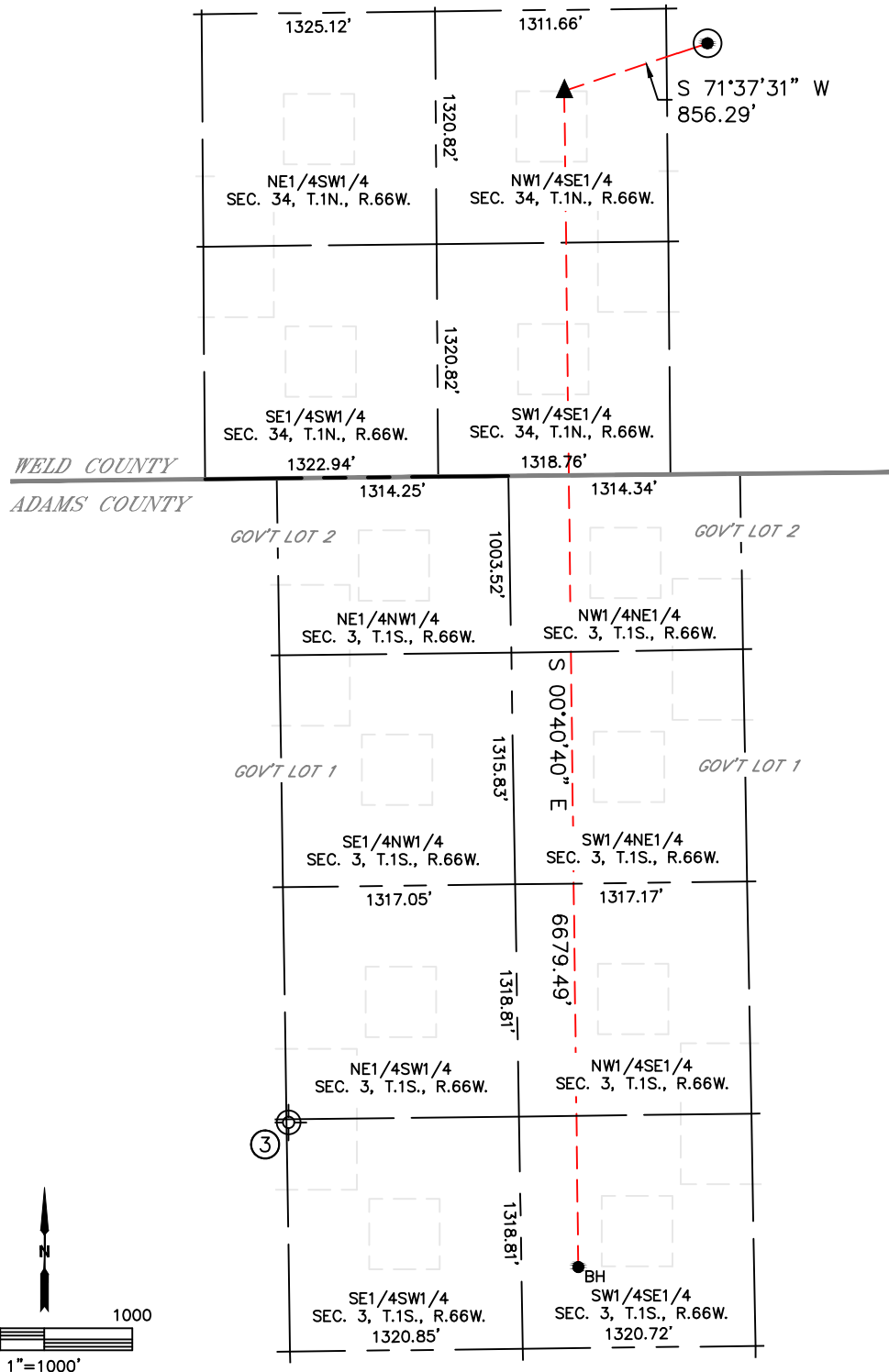


Lat40°, Inc. 6250 W. 10th Street, Unit 2, Greeley, CO 970-515-5294

SITE SKETCH

HOMESTEAD 15

SECTION: 34
TOWNSHIP: 1N
RANGE: 66W
6TH. P.M.
WELD COUNTY, CO



| WELL NO. | WELL NAME | SHL FOOTAGE | | | | SHL LAT° | SHL LONG° | PDOP | ELEV (FT.) | 1/4/1/4 |
|----------|-----------|-------------|-----|------|-----|----------|-----------|------|------------|---------|
| 3 | BERGMAN 2 | 1300 | FSL | 1325 | FWL | 39.99055 | 104.76668 | NA | 5133 | SESW |

DATE: 9/18/2015
PROJECT#: 2014230