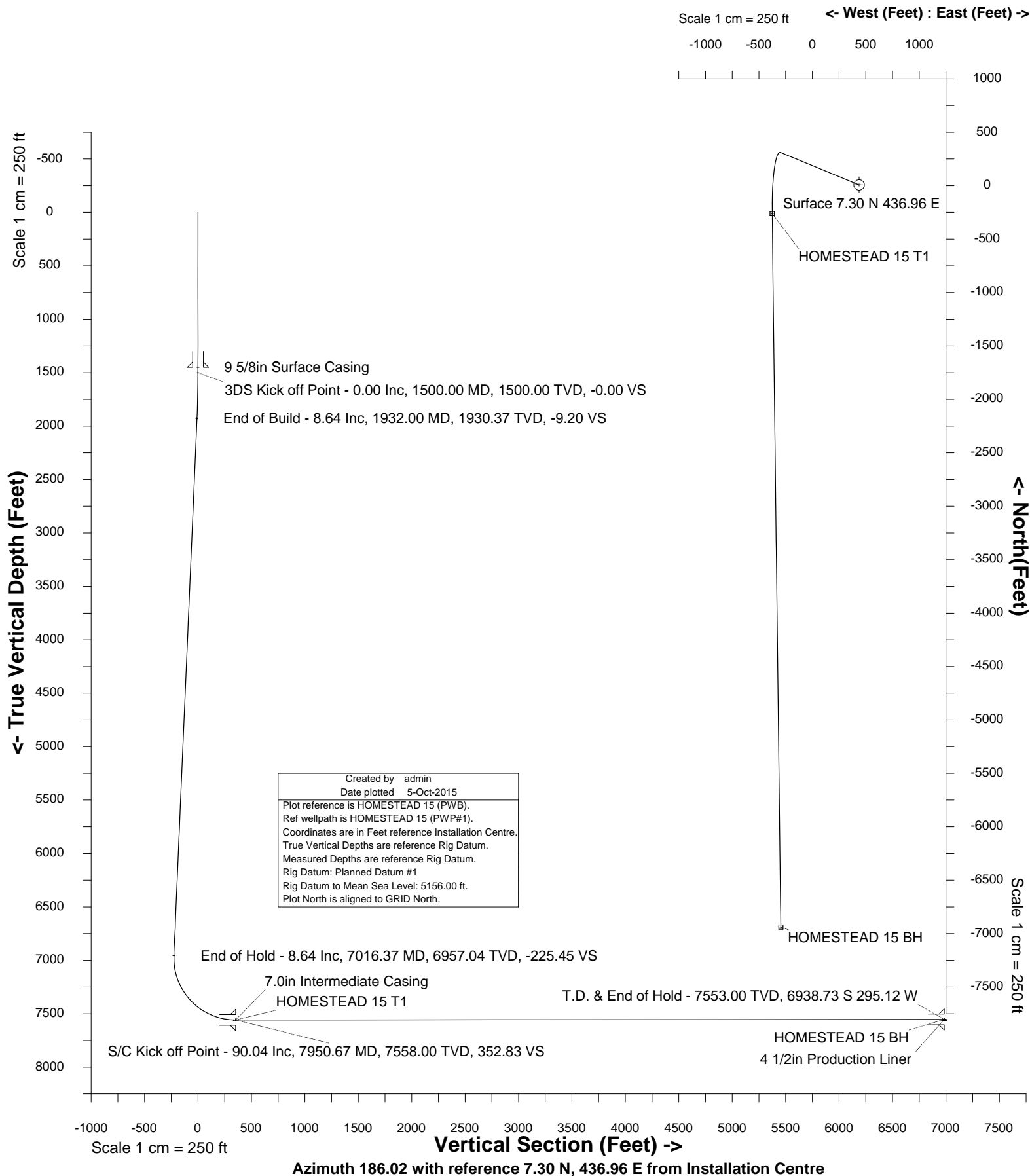


Petro Operating Company

Location Weld County, CO
Field Wattenberg
Installation Homestead

Slot HOMESTEAD 15
Well HOMESTEAD 15
Wellbore HOMESTEAD 15 (PWB)





SYSDRILL
Well Design Combined Report
Wellbore: HOMESTEAD 15 (PWB)

Wellhead Details							
Name	Latitude	Longitude	Northing	Easting	North	East	Slot Elevation Above Ground
HOMESTEAD 15	40.00720000	-104.75772000	1246339.8702	3207928.0244	7.30N	436.96E	0.00

Declination		
Date	Source	Time
13-Aug-2015	IGRF Model [1900.0-2020.0]	08:38

Installation Details						
Name	Installation Position (Latitude)	Installation Position (Longitude)	Northing	Easting	Coord System Name	North Alignment
Homestead	40.00719000	-104.75928000	1246332.5735	3207491.0767	CO83-NF on NORTH AMERICAN DATUM 1983 datum	Grid

Summary Wellpath									
MD[ft]	Inc[deg]	Azi[deg]	TVD[ft]	North[ft]	East[ft]	Dogleg [deg/100ft]	Vertical Section[ft]	Northing	Easting
23.00	0.00	0.000	23.00	0.00N	0.00E		0.00	1246339.87	3207928.02
1500.00	0.00	292.460	1500.00	0.00N	0.00E	==>	0.00	1246339.87	3207928.02
1932.00	8.64	292.460	1930.37	12.42N	30.04W	2.00	-9.20	1246352.29	3207897.98
7016.37	8.64	292.460	6957.04	304.27N	735.89W	==>	-225.46	1246644.13	3207192.16
7950.67	90.04	179.310	7558.00	269.09S	812.97W	10.00	352.82	1246070.79	3207115.08
14628.10	90.04	179.310	7553.00	6946.03S	732.08W	==>	6984.50	1239394.10	3207195.97

Interpolated Wellpath								
MD[ft]	Inc[deg]	Azi[deg]	TVD[ft]	North[ft]	East[ft]	Dogleg [deg/100ft]	Vertical Section[ft]	All Station Comments
0.00	0.00	0.000	0.00	0.00N	0.00E		0.00	Rig Datum Slot Datum
23.00	0.00	0.000	23.00	0.00N	0.00E	==>	0.00	
100.00	0.00	0.000	100.00	0.00N	0.00E	==>	0.00	
200.00	0.00	0.000	200.00	0.00N	0.00E	==>	0.00	
300.00	0.00	0.000	300.00	0.00N	0.00E	==>	0.00	
400.00	0.00	0.000	400.00	0.00N	0.00E	==>	0.00	
500.00	0.00	0.000	500.00	0.00N	0.00E	==>	0.00	
600.00	0.00	0.000	600.00	0.00N	0.00E	==>	0.00	
700.00	0.00	0.000	700.00	0.00N	0.00E	==>	0.00	
800.00	0.00	0.000	800.00	0.00N	0.00E	==>	0.00	
900.00	0.00	0.000	900.00	0.00N	0.00E	==>	0.00	
1000.00	0.00	0.000	1000.00	0.00N	0.00E	==>	0.00	
1100.00	0.00	0.000	1100.00	0.00N	0.00E	==>	0.00	
1200.00	0.00	0.000	1200.00	0.00N	0.00E	==>	0.00	
1300.00	0.00	0.000	1300.00	0.00N	0.00E	==>	0.00	
1400.00	0.00	0.000	1400.00	0.00N	0.00E	==>	0.00	9 5/8in Surface Casing 3DS Kick off Point
1450.00	0.00	0.000	1450.00	0.00N	0.00E	==>	0.00	
1500.00	0.00	292.460	1500.00	0.00N	0.00E	==>	0.00	
1600.00	2.00	292.460	1599.98	0.67N	1.61W	2.00	-0.49	
1700.00	4.00	292.460	1699.84	2.67N	6.45W	2.00	-1.98	
1800.00	6.00	292.460	1799.45	6.00N	14.50W	2.00	-4.44	End of Build
1900.00	8.00	292.460	1898.70	10.65N	25.76W	2.00	-7.89	
1932.00	8.64	292.460	1930.37	12.42N	30.04W	2.00	-9.20	
2000.00	8.64	292.460	1997.59	16.33N	39.48W	==>	-12.10	
2100.00	8.64	292.460	2096.46	22.07N	53.37W	==>	-16.35	
2200.00	8.64	292.460	2195.32	27.81N	67.25W	==>	-20.60	
2300.00	8.64	292.460	2294.19	33.55N	81.13W	==>	-24.86	
2400.00	8.64	292.460	2393.05	39.29N	95.01W	==>	-29.11	
2500.00	8.64	292.460	2491.92	45.03N	108.90W	==>	-33.36	
2600.00	8.64	292.460	2590.78	50.77N	122.78W	==>	-37.62	
2700.00	8.64	292.460	2689.65	56.51N	136.66W	==>	-41.87	
2800.00	8.64	292.460	2788.51	62.25N	150.55W	==>	-46.12	
2900.00	8.64	292.460	2887.38	67.99N	164.43W	==>	-50.38	
3000.00	8.64	292.460	2986.24	73.73N	178.31W	==>	-54.63	
3100.00	8.64	292.460	3085.11	79.47N	192.19W	==>	-58.88	
3200.00	8.64	292.460	3183.97	85.21N	206.08W	==>	-63.14	

All data is in Feet unless otherwise stated
Coordinates are from Slot MD's are from Rig and TVD's are from Rig (Planned Datum #1 5156.0ft above Mean Sea Level)
Vertical Section is from 0.00N 0.00E on azimuth 186.020 degrees
Bottom hole distance is 6984.50 Feet on azimuth 186.02 degrees from Wellhead
Calculation method uses Minimum Curvature method
Prepared by Integrated Petroleum Technologies, Inc.
Date Printed: 5-Oct-2015



SYSDRILL
Well Design Combined Report
Wellbore: HOMESTEAD 15 (PWB)

Interpolated Wellpath								All Station Comments
MD[ft]	Inc[deg]	Azi[deg]	TVD[ft]	North[ft]	East[ft]	Dogleg [deg/100ft]	Vertical Section[ft]	
3300.00	8.64	292.460	3282.84	90.95N	219.96W	==>	-67.39	
3400.00	8.64	292.460	3381.71	96.69N	233.84W	==>	-71.64	
3500.00	8.64	292.460	3480.57	102.43N	247.72W	==>	-75.90	
3600.00	8.64	292.460	3579.44	108.17N	261.61W	==>	-80.15	
3700.00	8.64	292.460	3678.30	113.91N	275.49W	==>	-84.40	
3800.00	8.64	292.460	3777.17	119.65N	289.37W	==>	-88.66	
3900.00	8.64	292.460	3876.03	125.39N	303.26W	==>	-92.91	
4000.00	8.64	292.460	3974.90	131.13N	317.14W	==>	-97.16	
4100.00	8.64	292.460	4073.76	136.87N	331.02W	==>	-101.42	
4200.00	8.64	292.460	4172.63	142.61N	344.90W	==>	-105.67	
4300.00	8.64	292.460	4271.49	148.35N	358.79W	==>	-109.92	
4400.00	8.64	292.460	4370.36	154.09N	372.67W	==>	-114.18	
4500.00	8.64	292.460	4469.22	159.83N	386.55W	==>	-118.43	
4600.00	8.64	292.460	4568.09	165.57N	400.43W	==>	-122.68	
4700.00	8.64	292.460	4666.95	171.31N	414.32W	==>	-126.94	
4800.00	8.64	292.460	4765.82	177.05N	428.20W	==>	-131.19	
4900.00	8.64	292.460	4864.68	182.79N	442.08W	==>	-135.44	
5000.00	8.64	292.460	4963.55	188.53N	455.97W	==>	-139.70	
5100.00	8.64	292.460	5062.41	194.27N	469.85W	==>	-143.95	
5200.00	8.64	292.460	5161.28	200.01N	483.73W	==>	-148.20	
5300.00	8.64	292.460	5260.14	205.75N	497.61W	==>	-152.46	
5400.00	8.64	292.460	5359.01	211.49N	511.50W	==>	-156.71	
5500.00	8.64	292.460	5457.87	217.23N	525.38W	==>	-160.96	
5600.00	8.64	292.460	5556.74	222.97N	539.26W	==>	-165.22	
5700.00	8.64	292.460	5655.60	228.71N	553.14W	==>	-169.47	
5800.00	8.64	292.460	5754.47	234.45N	567.03W	==>	-173.72	
5900.00	8.64	292.460	5853.33	240.19N	580.91W	==>	-177.98	
6000.00	8.64	292.460	5952.20	245.93N	594.79W	==>	-182.23	
6100.00	8.64	292.460	6051.06	251.67N	608.68W	==>	-186.48	
6200.00	8.64	292.460	6149.93	257.41N	622.56W	==>	-190.74	
6300.00	8.64	292.460	6248.80	263.15N	636.44W	==>	-194.99	
6400.00	8.64	292.460	6347.66	268.89N	650.32W	==>	-199.24	
6500.00	8.64	292.460	6446.53	274.63N	664.21W	==>	-203.50	
6600.00	8.64	292.460	6545.39	280.37N	678.09W	==>	-207.75	
6700.00	8.64	292.460	6644.26	286.11N	691.97W	==>	-212.00	
6800.00	8.64	292.460	6743.12	291.85N	705.85W	==>	-216.26	
6900.00	8.64	292.460	6841.99	297.59N	719.74W	==>	-220.51	
7000.00	8.64	292.460	6940.85	303.33N	733.62W	==>	-224.76	
7016.37	8.64	292.460	6957.04	304.27N	735.89W	==>	-225.46	End of Hold
7100.00	9.37	237.130	7039.78	302.97N	747.44W	10.00	-222.96	
7200.00	16.91	206.660	7137.20	285.51N	760.84W	10.00	-204.19	
7300.00	26.13	195.860	7230.16	251.23N	773.42W	10.00	-168.78	
7400.00	35.76	190.500	7315.84	201.19N	784.79W	10.00	-117.83	
7500.00	45.53	187.200	7391.64	136.90N	794.61W	10.00	-52.86	
7600.00	55.36	184.850	7455.25	60.32N	802.57W	10.00	24.13	
7700.00	65.23	183.010	7504.74	26.23S	808.45W	10.00	110.82	
7800.00	75.12	181.440	7538.60	120.12S	812.05W	10.00	204.57	
7900.00	85.03	180.010	7555.82	218.49S	813.28W	10.00	302.53	
7950.00	89.98	179.320	7558.00	268.42S	812.98W	10.00	352.16	7.0in Intermediate Casing
7950.67	90.04	179.310	7558.00	269.09S	812.97W	10.00	352.82	S/C Kick off Point/Target, HOMESTEAD 15 T1
8000.00	90.04	179.310	7557.96	318.42S	812.38W	==>	401.81	
8100.00	90.04	179.310	7557.89	418.41S	811.17W	==>	501.13	
8200.00	90.04	179.310	7557.81	518.40S	809.95W	==>	600.44	
8300.00	90.04	179.310	7557.74	618.40S	808.74W	==>	699.76	
8400.00	90.04	179.310	7557.66	718.39S	807.53W	==>	799.07	
8500.00	90.04	179.310	7557.59	818.38S	806.32W	==>	898.39	
8600.00	90.04	179.310	7557.51	918.37S	805.11W	==>	997.70	
8700.00	90.04	179.310	7557.44	1018.37S	803.90W	==>	1097.02	
8800.00	90.04	179.310	7557.36	1118.36S	802.69W	==>	1196.33	
8900.00	90.04	179.310	7557.29	1218.35S	801.47W	==>	1295.65	
9000.00	90.04	179.310	7557.21	1318.34S	800.26W	==>	1394.96	
9100.00	90.04	179.310	7557.14	1418.34S	799.05W	==>	1494.28	

All data is in Feet unless otherwise stated
Coordinates are from Slot MD's are from Rig and TVD's are from Rig (Planned Datum #1 5156.0ft above Mean Sea Level)
Vertical Section is from 0.00N 0.00E on azimuth 186.020 degrees
Bottom hole distance is 6984.50 Feet on azimuth 186.02 degrees from Wellhead
Calculation method uses Minimum Curvature method
Prepared by Integrated Petroleum Technologies, Inc.
Date Printed: 5-Oct-2015



SYSDRILL
Well Design Combined Report
Wellbore: HOMESTEAD 15 (PWB)

Interpolated Wellpath								
MD[ft]	Inc[deg]	Azi[deg]	TVD[ft]	North[ft]	East[ft]	Dogleg [deg/100ft]	Vertical Section[ft]	All Station Comments
9200.00	90.04	179.310	7557.06	1518.33S	797.84W	==>	1593.59	
9300.00	90.04	179.310	7556.99	1618.32S	796.63W	==>	1692.91	
9400.00	90.04	179.310	7556.91	1718.31S	795.42W	==>	1792.22	
9500.00	90.04	179.310	7556.84	1818.31S	794.21W	==>	1891.54	
9600.00	90.04	179.310	7556.76	1918.30S	792.99W	==>	1990.85	
9700.00	90.04	179.310	7556.69	2018.29S	791.78W	==>	2090.17	
9800.00	90.04	179.310	7556.62	2118.29S	790.57W	==>	2189.48	
9900.00	90.04	179.310	7556.54	2218.28S	789.36W	==>	2288.80	
10000.00	90.04	179.310	7556.47	2318.27S	788.15W	==>	2388.11	
10100.00	90.04	179.310	7556.39	2418.26S	786.94W	==>	2487.43	
10200.00	90.04	179.310	7556.32	2518.26S	785.73W	==>	2586.74	
10300.00	90.04	179.310	7556.24	2618.25S	784.51W	==>	2686.06	
10400.00	90.04	179.310	7556.17	2718.24S	783.30W	==>	2785.37	
10500.00	90.04	179.310	7556.09	2818.23S	782.09W	==>	2884.68	
10600.00	90.04	179.310	7556.02	2918.23S	780.88W	==>	2984.00	
10700.00	90.04	179.310	7555.94	3018.22S	779.67W	==>	3083.31	
10800.00	90.04	179.310	7555.87	3118.21S	778.46W	==>	3182.63	
10900.00	90.04	179.310	7555.79	3218.20S	777.25W	==>	3281.94	
11000.00	90.04	179.310	7555.72	3318.20S	776.03W	==>	3381.26	
11100.00	90.04	179.310	7555.64	3418.19S	774.82W	==>	3480.57	
11200.00	90.04	179.310	7555.57	3518.18S	773.61W	==>	3579.89	
11300.00	90.04	179.310	7555.49	3618.17S	772.40W	==>	3679.20	
11400.00	90.04	179.310	7555.42	3718.17S	771.19W	==>	3778.52	
11500.00	90.04	179.310	7555.34	3818.16S	769.98W	==>	3877.83	
11600.00	90.04	179.310	7555.27	3918.15S	768.77W	==>	3977.15	
11700.00	90.04	179.310	7555.19	4018.15S	767.55W	==>	4076.46	
11800.00	90.04	179.310	7555.12	4118.14S	766.34W	==>	4175.78	
11900.00	90.04	179.310	7555.04	4218.13S	765.13W	==>	4275.09	
12000.00	90.04	179.310	7554.97	4318.12S	763.92W	==>	4374.41	
12100.00	90.04	179.310	7554.89	4418.12S	762.71W	==>	4473.72	
12200.00	90.04	179.310	7554.82	4518.11S	761.50W	==>	4573.04	
12300.00	90.04	179.310	7554.74	4618.10S	760.29W	==>	4672.35	
12400.00	90.04	179.310	7554.67	4718.09S	759.07W	==>	4771.67	
12500.00	90.04	179.310	7554.59	4818.09S	757.86W	==>	4870.98	
12600.00	90.04	179.310	7554.52	4918.08S	756.65W	==>	4970.30	
12700.00	90.04	179.310	7554.44	5018.07S	755.44W	==>	5069.61	
12800.00	90.04	179.310	7554.37	5118.06S	754.23W	==>	5168.93	
12900.00	90.04	179.310	7554.29	5218.06S	753.02W	==>	5268.24	
13000.00	90.04	179.310	7554.22	5318.05S	751.80W	==>	5367.56	
13100.00	90.04	179.310	7554.14	5418.04S	750.59W	==>	5466.87	
13200.00	90.04	179.310	7554.07	5518.03S	749.38W	==>	5566.19	
13300.00	90.04	179.310	7553.99	5618.03S	748.17W	==>	5665.50	
13400.00	90.04	179.310	7553.92	5718.02S	746.96W	==>	5764.82	
13500.00	90.04	179.310	7553.84	5818.01S	745.75W	==>	5864.13	
13600.00	90.04	179.310	7553.77	5918.01S	744.54W	==>	5963.45	
13700.00	90.04	179.310	7553.69	6018.00S	743.32W	==>	6062.76	
13800.00	90.04	179.310	7553.62	6117.99S	742.11W	==>	6162.08	
13900.00	90.04	179.310	7553.55	6217.98S	740.90W	==>	6261.39	
14000.00	90.04	179.310	7553.47	6317.98S	739.69W	==>	6360.71	
14100.00	90.04	179.310	7553.40	6417.97S	738.48W	==>	6460.02	
14200.00	90.04	179.310	7553.32	6517.96S	737.27W	==>	6559.34	
14300.00	90.04	179.310	7553.25	6617.95S	736.06W	==>	6658.65	
14400.00	90.04	179.310	7553.17	6717.95S	734.84W	==>	6757.96	
14500.00	90.04	179.310	7553.10	6817.94S	733.63W	==>	6857.28	
14600.00	90.04	179.310	7553.02	6917.93S	732.42W	==>	6956.59	
14628.10	90.04	179.310	7553.00	6946.03S	732.08W	==>	6984.50	End of Hold/Target. 4 1/2in Production Liner, HOMESTEAD 15 BH

All data is in Feet unless otherwise stated
Coordinates are from Slot MD's are from Rig and TVD's are from Rig (Planned Datum #1 5156.0ft above Mean Sea Level)
Vertical Section is from 0.00N 0.00E on azimuth 186.020 degrees
Bottom hole distance is 6984.50 Feet on azimuth 186.02 degrees from Wellhead
Calculation method uses Minimum Curvature method
Prepared by Integrated Petroleum Technologies, Inc.
Date Printed: 5-Oct-2015



SYSDRILL
Well Design Combined Report
Wellbore: HOMESTEAD 15 (PWB)

Hole Sections

Diameter [in]	Start MD[ft]	Start TVD[ft]	Start North[ft]	Start East[ft]	End MD[ft]	End TVD[ft]	End North[ft]	End East[ft]
13 1/2	23.00	23.00	0.00N	0.00E	1450.00	1450.00	0.00N	0.00E
8 3/4	1450.00	1450.00	0.00N	0.00E	7950.00	7558.00	268.42S	812.98W
6 1/8	7950.00	7558.00	268.42S	812.98W	14628.10	7553.00	6946.03S	732.08W

Casings

Name	Top MD[ft]	Top TVD[ft]	Top North[ft]	Top East[ft]	Shoe MD[ft]	Shoe TVD[ft]	Shoe North[ft]	Shoe East[ft]
9 5/8in Surface Casing	23.00	23.00	0.00N	0.00E	1450.00	1450.00	0.00N	0.00E
7.0in Intermediate Casing	23.00	23.00	0.00N	0.00E	7950.00	7558.00	268.42S	812.98W
4 1/2in Production Liner	7051.00	6991.31	305.21N	740.69W	14628.10	7553.00	6946.03S	732.08W

Targets

Name	North[ft]	East[ft]	TVD[ft]	Latitude	Longitude	Northing	Easting
HOMESTEAD 15 BH	6946.03S	732.08W	7553.00	39.98815000	-104.76054000	1239394.10	3207195.97
HOMESTEAD 15 T1	269.09S	812.97W	7558.00	40.00648000	-104.76063000	1246070.79	3207115.08

Survey Tool Program

Reference	Survey Name	MD[ft]	TVD[ft]	Survey Tool	Error Model
400717	Planned	14628.10	7553.00	ISCWSA MWD	Rev 3 + Fixed Rig + Rotating

Notes

All data is in Feet unless otherwise stated
Coordinates are from Slot MD's are from Rig and TVD's are from Rig (Planned Datum #1 5156.0ft above Mean Sea Level)
Vertical Section is from 0.00N 0.00E on azimuth 186.020 degrees
Bottom hole distance is 6984.50 Feet on azimuth 186.02 degrees from Wellhead
Calculation method uses Minimum Curvature method
Prepared by Integrated Petroleum Technologies, Inc.
Date Printed: 5-Oct-2015



SYSDRILL
Closest Approach + Clearance Factor Summary Report
Wellbore: HOMESTEAD 15 (PWB)

Ellipse separations are reported ONLY if BOTH wells have uncertainty data
Only Depth and Magnetic Reference Field error terms are correlated across tie points
Scan limit is calculated on CENTRE to CENTRE distance
Summary data uses Closest Approach clearance calculation for all minima
Hole size/Casings ARE included
Hole size/Casings are NOT subtracted from Centre-Centre distance
Confidence limit of 95.00% / 2.80 SD.

Wellbore		
Name	Created	Last Revised
HOMESTEAD 15 (PWB)	18-Aug-2015	24-Sep-2015

Well		
Name	Government ID	Last Revised
HOMESTEAD 15		18-Aug-2015

Slot						
Name	Latitude	Longitude	Grid Northing	Grid Easting	North	East
HOMESTEAD 15	40.00720000	-104.75772000	1246339.8702	3207928.0244	7.30N	436.96E

Installation						
Name	Installation Position (Latitude)	Installation Position (Longitude)	Easting	Northing	Coord System Name	North Alignment
Homestead	40.00719000	-104.75928000	3207491.0767	1246332.5735	CO83-NF on NORTH AMERICAN DATUM 1983 datum	Grid

Clearance Summary								
Offset WellName	Separation [ft]	MD[ft]	Diverging From[ft]	Ellipse Separation [ft]	Ellipse MD[ft]	Clearance Factor	Clearance MD[ft]	
HOMESTEAD 14	16.81	1475.00	1925.53	-37.90	14628.10	0.86	14628.10	
HOMESTEAD 16	16.81	1500.00	14628.10	-154.39	14628.10	0.53	14628.10	
HOMESTEAD 17	30.81	1500.00	14628.10	21.42	1515.78	1.10	14628.10	
HOMESTEAD 13	30.82	1450.17	1450.17	-20.18	14628.10	0.94	14628.10	
HOMESTEAD 18	47.62	1500.00	7995.44	38.23	1515.78	1.36	14628.10	
HOMESTEAD 19	64.43	1500.00	14628.10	55.03	1515.78	1.83	14628.10	
HOMESTEAD 20	81.24	1500.00	14628.10	71.84	1515.78	2.34	14628.10	
HOMESTEAD 21	95.25	1500.00	14628.03	85.85	1515.78	2.71	14628.10	
HOMESTEAD 22	112.05	1500.00	1500.00	102.69	1515.78	3.18	14628.10	
HOMESTEAD 23	128.86	1477.00	14628.10	119.57	1500.00	3.66	14628.10	
HOMESTEAD 24	142.87	1452.00	14628.10	133.61	1433.76	4.07	14628.10	
HOMESTEAD 12	218.93	2252.65	14628.10	153.02	14628.10	1.44	14628.10	
HOMESTEAD 11	241.20	2221.24	14628.10	227.70	2221.24	2.05	14628.10	
HOMESTEAD 10	262.95	2157.13	14628.10	249.76	2188.35	2.47	14628.10	
HOMESTEAD 9	283.14	2126.39	14628.10	270.10	2155.55	2.98	14628.10	
HOMESTEAD 8	303.10	2095.60	14628.10	290.33	2123.00	3.55	14628.10	
HOMESTEAD 7	323.99	2064.81	14628.10	311.47	2089.93	4.01	14628.10	
HOMESTEAD 6	344.12	2034.07	14628.10	331.73	2073.52	4.52	14628.10	
HOMESTEAD 5	364.53	2002.30	14628.10	352.41	2024.31	5.09	14628.10	
HOMESTEAD 4	385.10	1971.50	14628.10	373.16	2007.91	5.54	14628.10	
HOMESTEAD 3	405.23	1942.29	14628.10	393.38	1975.10	6.06	14628.10	
HOMESTEAD 2	423.02	1469.00	14628.10	413.52	1942.29	6.61	14628.10	
HOMESTEAD 1	437.02	1444.00	14628.10	427.68	1444.00	7.07	14628.10	

All data is in Feet unless otherwise stated
Coordinates are from Slot MD's are from Rig and TVD's are from Rig (Planned Datum #1 5156.0ft above Mean Sea Level)
Vertical Section is from 0.00N 0.00E on azimuth 186.020 degrees
Prepared by Integrated Petroleum Technologies, Inc.
Date Printed: 5-Oct-2015

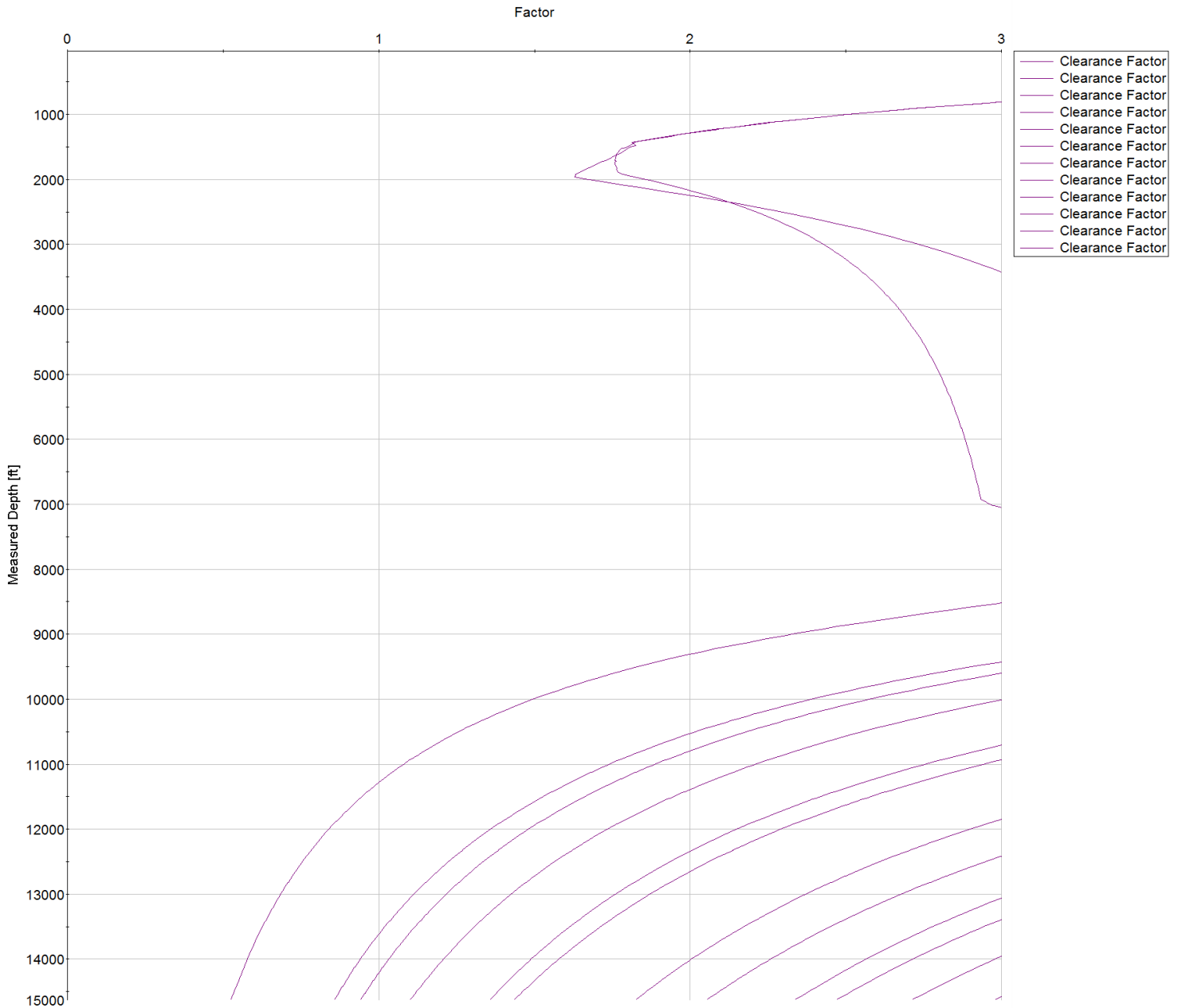


SYSDRILL
Closest Approach + Clearance Factor Summary Report
Wellbore: HOMESTEAD 15 (PWB)

Clearance Summary							
Offset WellName	Separation [ft]	MD[ft]	Diverging From[ft]	Ellipse Separation [ft]	Ellipse MD[ft]	Clearance Factor	Clearance MD[ft]
WILLARD, JOHN W. GAS UNIT #1	892.57	7044.00	7044.00	839.66	7044.00	16.82	7093.21
BERGMAN #1	1591.73	10823.59	10823.59	1484.42	10849.77	14.70	10997.41
BERGMAN #2	1717.13	13747.26	13747.26	1537.41	13802.53	9.32	14064.99
BEN STEVENSON GAS UNIT #1	2215.91	14628.10	14628.10	2118.20	14628.10	22.68	14628.10
UPRR 50 PAN AM M #1	2515.05	1500.00	9126.02	2498.95	1523.00	37.06	10275.62
BRIGHTON COMPANY #1	3936.48	13459.07	13459.07	3764.34	13540.06	21.79	14393.08
VISTA USX #WW33-08D	4169.40	7454.10	7454.10	4110.93	7454.10	55.83	10767.75
SHAW A #1	5598.39	14628.10	14628.10	5456.97	14628.10	39.59	14628.10

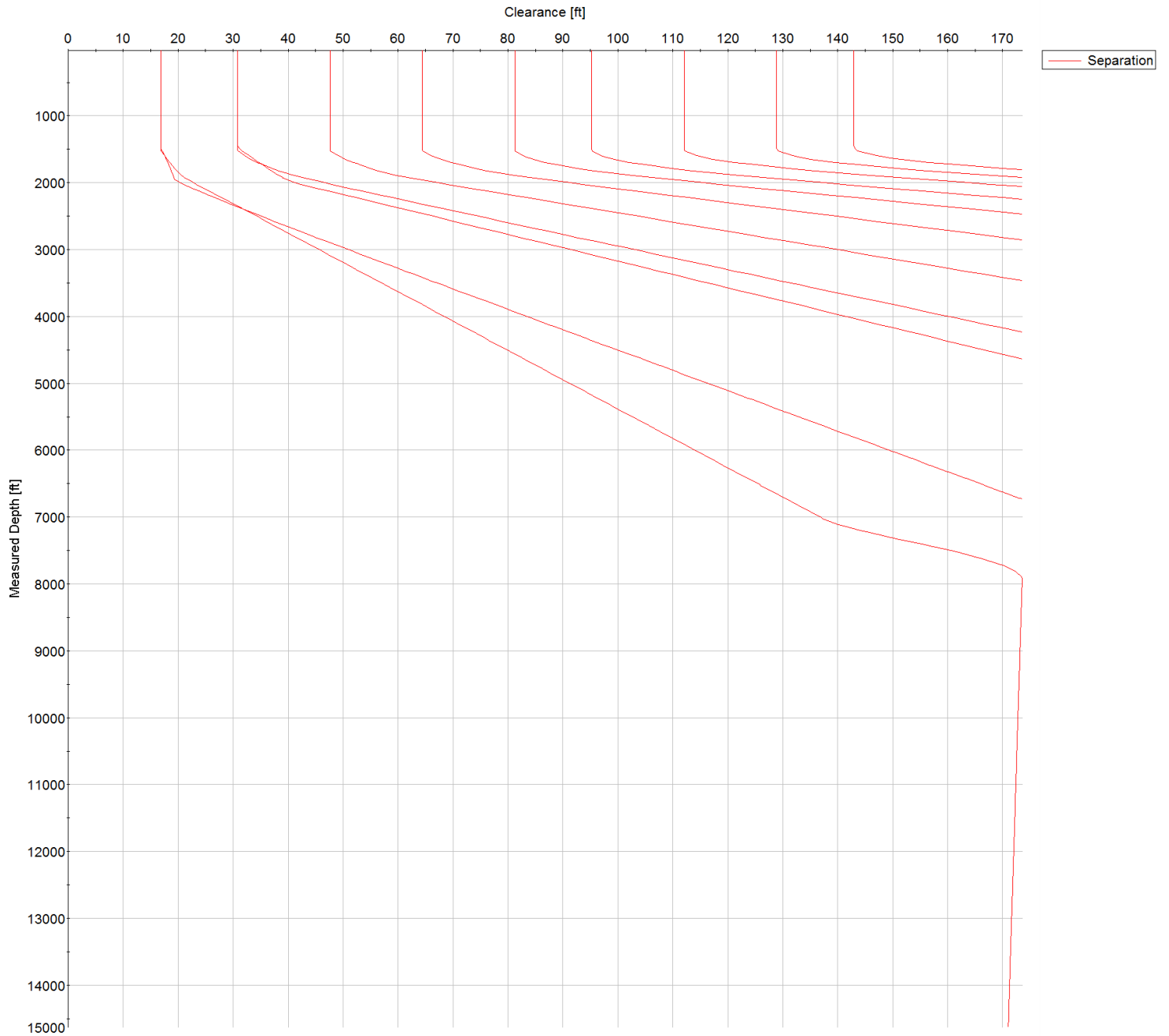


SYSDRILL
Closest Approach + Clearance Factor Summary Report
Wellbore: HOMESTEAD 15 (PWB)





SYSDRILL
Closest Approach + Clearance Factor Summary Report
Wellbore: HOMESTEAD 15 (PWB)





SYSDRILL
Closest Approach + Clearance Factor Summary Report
Wellbore: HOMESTEAD 15 (PWB)

