

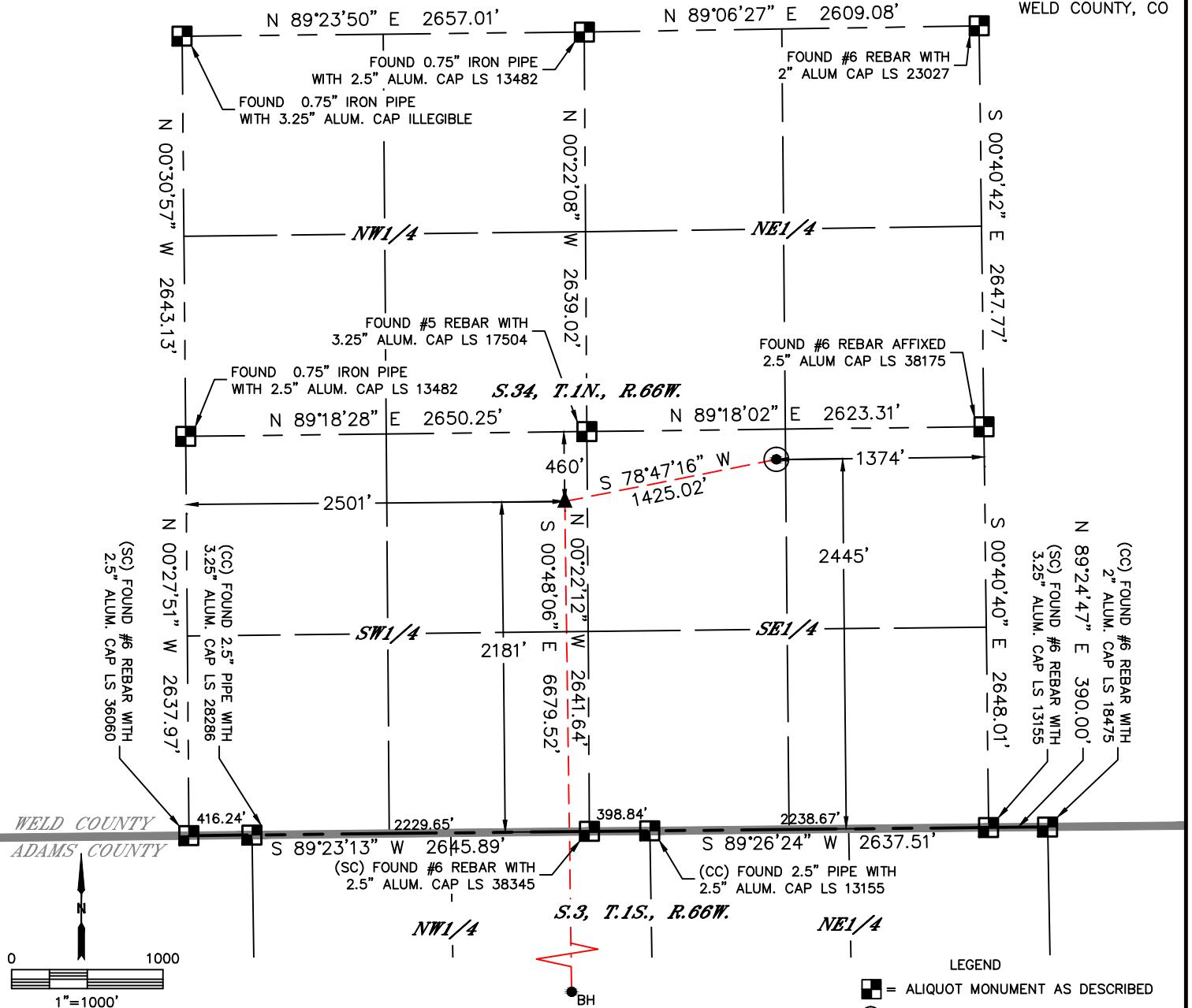


Lat40°, Inc. 6250 W. 10th Street, Unit 2, Greeley, CO 970-515-5294

# WELL LOCATION CERTIFICATE

HOMESTEAD 10

SECTION: 34  
TOWNSHIP: 1N  
RANGE: 66W  
6TH. P.M.  
WELD COUNTY, CO



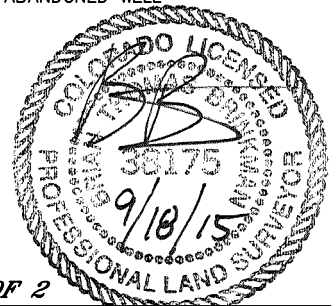
CLIENT: PETRO OPERATING CO.						LANDMAN: DEREK PETRIE			
INSTRUMENT OPERATOR: CHASE MILLER						SURVEY DATE: 7/24/2015		SURFACE USE: CROPLAND	
SHL FOOTAGE			SHL LAT °		SHL LONG °	SHL PDOP	SHL ELEV (FT.)	SHL 1/4/1/4	SHL S-T-R
2445	FSL	1374	FEL	40.00720	-104.75877	1.6	5137	NWSE	34-1N-66

BHL FOOTAGE				BHL LAT °	BHL LONG °	BHL S-T-R	EP LAT °	EP LONG °	EP S-T-R
460	FSL	2098	FWL	39.98814	-104.76363	3-1S-66	40.00647	-104.76377	34-1N-66

NOTE:  
1) Bearings shown are Grid Bearings of the Colorado State Plane Coordinate System, North Zone, North American Datum 1983. The lineal dimensions as contained herein are based upon the "U.S. Survey Foot."  
2) Distances to section lines measured at 90 degrees from said section lines.  
3) Ground elevations are based on an observed GPS elevation (NAVD 1988 DATUM).  
4) Latitude and Longitude shown are (NAD 83 DATUM).  
5) IMPROVEMENTS: See LOCATION DRAWING for all visible improvements within 500' of oil and gas location.  
6) This map does not represent a boundary survey.

NEAREST CULTURAL ITEMS	
BUILDING	±1128' NW
BUILDING UNIT	±1399' NW
HIGH OCCUPANCY BUILDING UNIT	±3257' SW
DESIGNATED OUTSIDE ACTIVITY AREA	5280'+
PUBLIC ROAD (ARROWHEAD DRIVE)	±1508' SW
ABOVE GROUND UTILITY	±1325' E
RAILROAD	5280'+
PROPERTY LINE	1' S, L12, B 1

- LEGEND
- = ALIQUOT MONUMENT AS DESCRIBED
  - = CALCULATED POSITION
  - = SURFACE HOLE LOCATION (SHL)
  - ▲ = ENTRY POINT LOCATION (EP)
  - BH = BOTTOM HOLE LOCATION (BHL)
  - ⊙ = EXISTING WELL
  - ⊙ = ABANDONED WELL



SHEET 1 OF 2

Brian T. Brinkman—On behalf of Lat40°, Inc.  
Colorado Licensed Professional Land Surveyor No. 38175  
DATE: 9/18/2015  
PROJECT#: 2014230

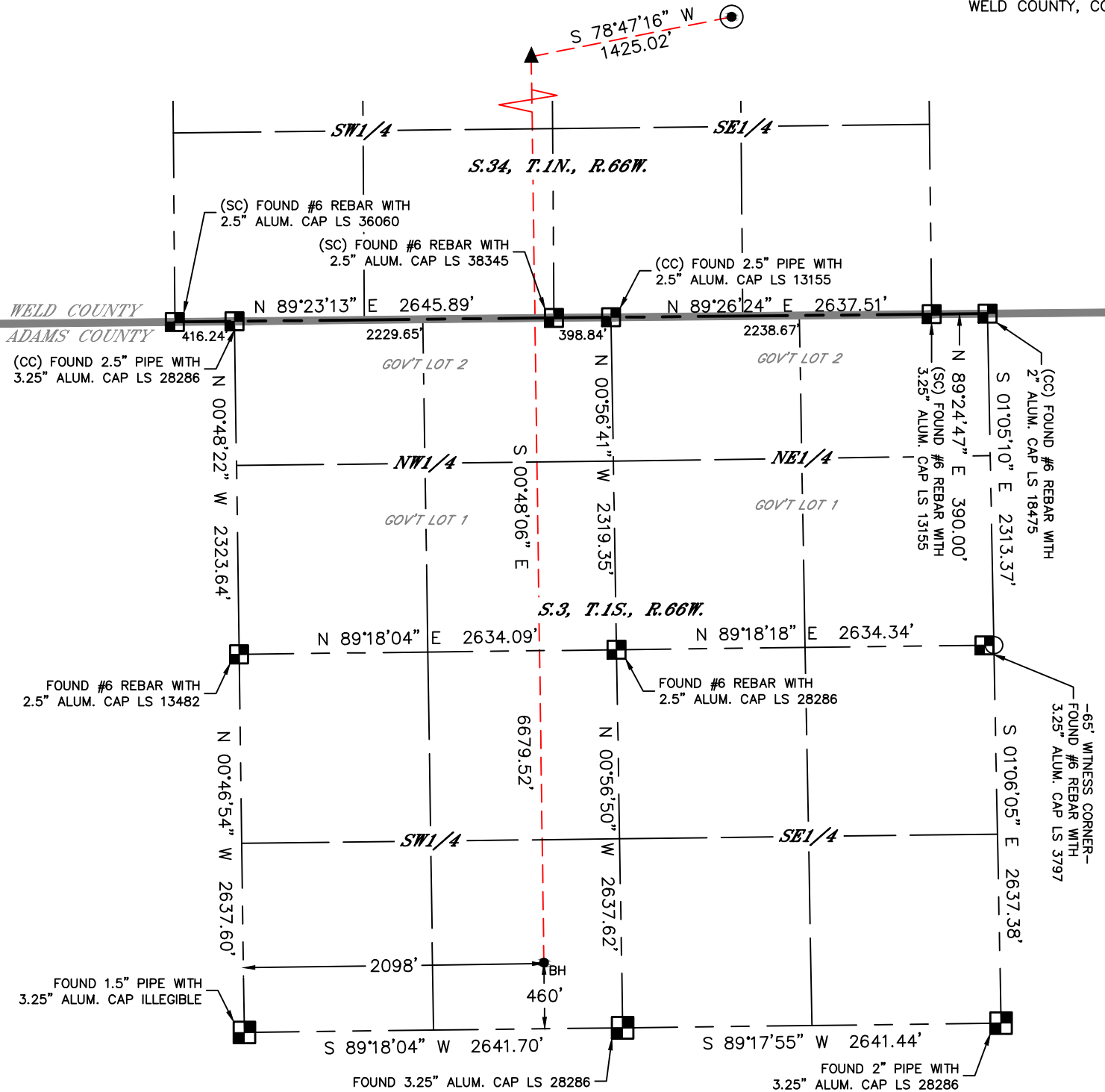


Lat40°, Inc. 6250 W. 10th Street, Unit 2, Greeley, CO 970-515-5294

# WELL LOCATION CERTIFICATE

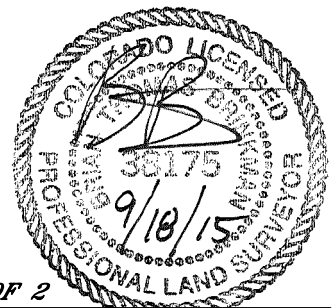
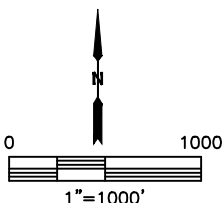
HOMESTEAD 10

SECTION: 34  
TOWNSHIP: 1N  
RANGE: 66W  
6TH. P.M.  
WELD COUNTY, CO



## LEGEND

- = ALIQUOT MONUMENT AS DESCRIBED
- = CALCULATED POSITION
- = SURFACE HOLE LOCATION (SHL)
- ▲ = ENTRY POINT LOCATION (EP)
- = BOTTOM HOLE LOCATION (BHL)
- ⊙ = EXISTING WELL
- ⊙ = ABANDONED WELL



SHEET 2 OF 2

Brian T. Brinkman—On behalf of Lat40°, Inc.  
Colorado Licensed Professional Land Surveyor No. 38175  
DATE: 9/18/2015  
PROJECT#: 2014230

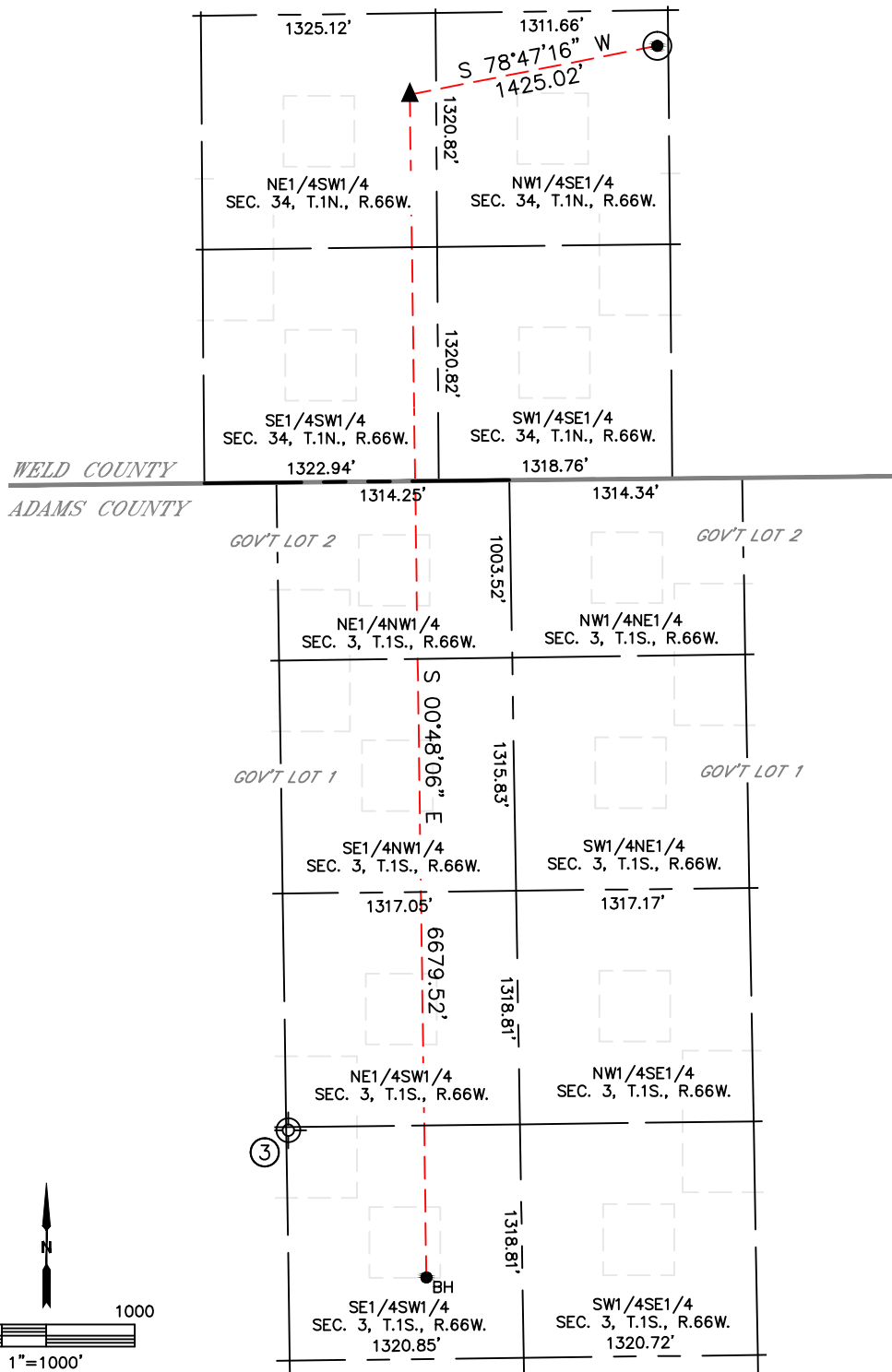


Lat40°, Inc. 6250 W. 10th Street, Unit 2, Greeley, CO 970-515-5294

# SITE SKETCH

## HOMESTEAD 10

SECTION: 34  
TOWNSHIP: 1N  
RANGE: 66W  
6TH. P.M.  
WELD COUNTY, CO



WELL NO.	WELL NAME	SHL FOOTAGE				SHL LAT°	SHL LONG°	PDOP	ELEV (FT.)	1/4/1/4
3	BERGMAN 2	1300	FSL	1325	FWL	39.99055	104.76668	NA	5133	SESW

DATE: 9/18/2015  
PROJECT#: 2014230