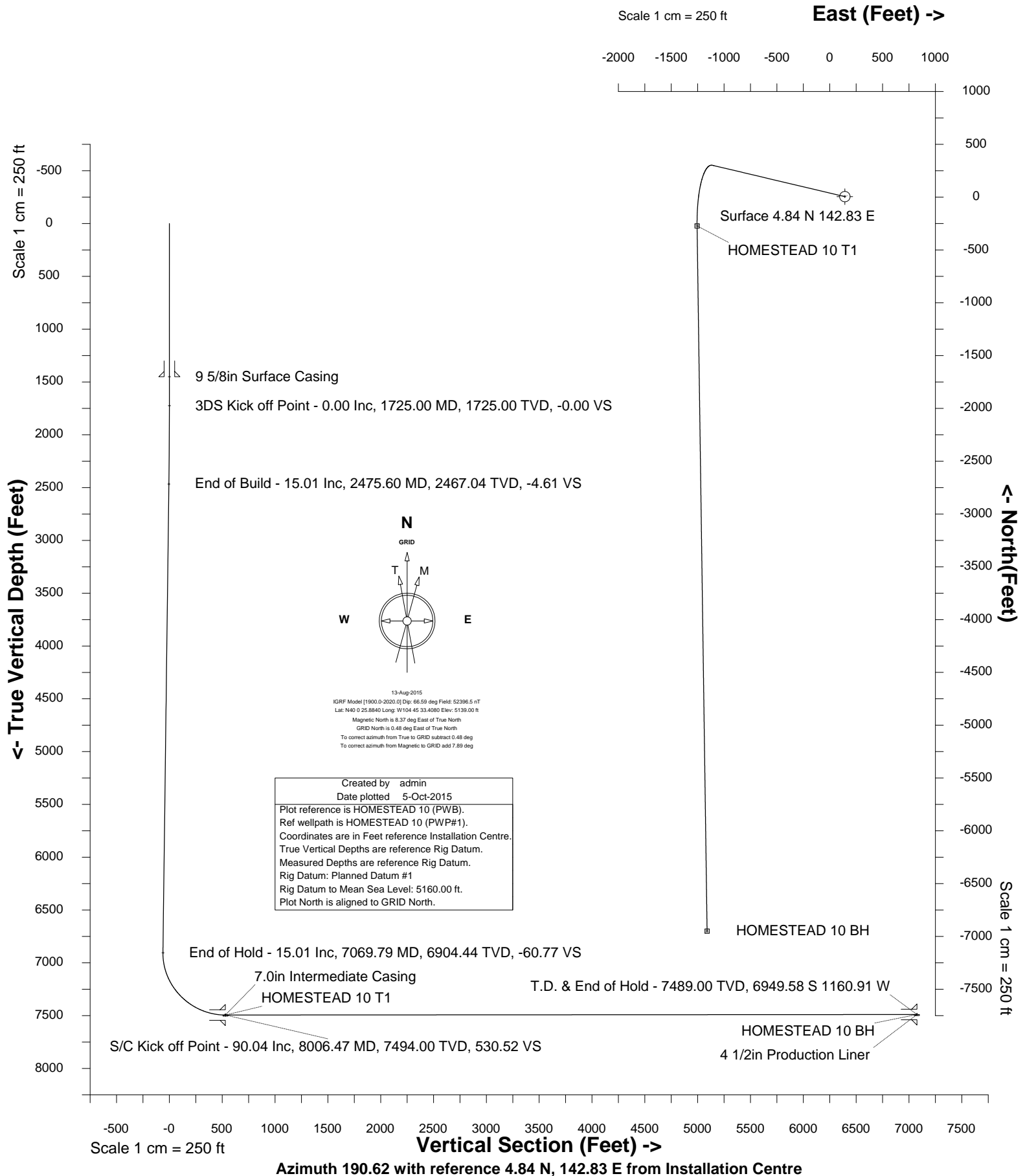


Location	Weld County, CO	Slot	HOMESTEAD 10
Field	Wattenberg	Well	HOMESTEAD 10
Installation	Homestead	Wellbore	HOMESTEAD 10 (PWB)





SYSDRILL
Well Design Combined Report
Wellbore: HOMESTEAD 10 (PWB)

Wellhead Details							
Name	Latitude	Longitude	Northing	Easting	North	East	Slot Elevation Above Ground
HOMESTEAD 10	40.00720000	-104.75877000	1246337.4099	3207633.9045	4.84N	142.83E	0.00

Declination		
Date	Source	Time
13-Aug-2015	IGRF Model [1900.0-2020.0]	08:38

Installation Details						
Name	Installation Position (Latitude)	Installation Position (Longitude)	Northing	Easting	Coord System Name	North Alignment
Homestead	40.00719000	-104.75928000	1246332.5735	3207491.0767	CO83-NF on NORTH AMERICAN DATUM 1983 datum	Grid

Summary Wellpath									
MD[ft]	Inc[deg]	Azi[deg]	TVD[ft]	North[ft]	East[ft]	Dogleg [deg/100ft]	Vertical Section[ft]	Northing	Easting
23.00	0.00	0.000	23.00	0.00N	0.00E		0.00	1246337.41	3207633.90
1725.00	0.00	283.320	1725.00	0.00N	0.00E	==>	0.00	1246337.41	3207633.90
2475.60	15.01	283.320	2467.04	22.53N	95.14W	2.00	-4.61	1246359.94	3207538.77
7069.79	15.01	283.320	6904.44	296.75N	1253.11W	==>	-60.78	1246634.15	3206380.84
8006.47	90.04	179.190	7494.00	277.59S	1398.41W	10.00	530.51	1246059.83	3206235.54
14683.97	90.04	179.190	7489.00	6954.41S	1303.75W	==>	7075.56	1239383.25	3206330.20

Interpolated Wellpath								
MD[ft]	Inc[deg]	Azi[deg]	TVD[ft]	North[ft]	East[ft]	Dogleg [deg/100ft]	Vertical Section[ft]	All Station Comments
0.00	0.00	0.000	0.00	0.00N	0.00E		0.00	Rig Datum Slot Datum
23.00	0.00	0.000	23.00	0.00N	0.00E	==>	0.00	
100.00	0.00	0.000	100.00	0.00N	0.00E	==>	0.00	
200.00	0.00	0.000	200.00	0.00N	0.00E	==>	0.00	
300.00	0.00	0.000	300.00	0.00N	0.00E	==>	0.00	
400.00	0.00	0.000	400.00	0.00N	0.00E	==>	0.00	
500.00	0.00	0.000	500.00	0.00N	0.00E	==>	0.00	
600.00	0.00	0.000	600.00	0.00N	0.00E	==>	0.00	
700.00	0.00	0.000	700.00	0.00N	0.00E	==>	0.00	
800.00	0.00	0.000	800.00	0.00N	0.00E	==>	0.00	
900.00	0.00	0.000	900.00	0.00N	0.00E	==>	0.00	
1000.00	0.00	0.000	1000.00	0.00N	0.00E	==>	0.00	
1100.00	0.00	0.000	1100.00	0.00N	0.00E	==>	0.00	
1200.00	0.00	0.000	1200.00	0.00N	0.00E	==>	0.00	
1300.00	0.00	0.000	1300.00	0.00N	0.00E	==>	0.00	
1400.00	0.00	0.000	1400.00	0.00N	0.00E	==>	0.00	9 5/8in Surface Casing
1450.00	0.00	0.000	1450.00	0.00N	0.00E	==>	0.00	
1500.00	0.00	0.000	1500.00	0.00N	0.00E	==>	0.00	
1600.00	0.00	0.000	1600.00	0.00N	0.00E	==>	0.00	
1700.00	0.00	0.000	1700.00	0.00N	0.00E	==>	0.00	
1725.00	0.00	283.320	1725.00	0.00N	0.00E	==>	0.00	3DS Kick off Point
1800.00	1.50	283.320	1799.99	0.23N	0.96W	2.00	-0.05	
1900.00	3.50	283.320	1899.89	1.23N	5.20W	2.00	-0.25	
2000.00	5.50	283.320	1999.58	3.04N	12.83W	2.00	-0.62	
2100.00	7.50	283.320	2098.93	5.65N	23.85W	2.00	-1.16	
2200.00	9.50	283.320	2197.83	9.05N	38.23W	2.00	-1.85	End of Build
2300.00	11.50	283.320	2296.15	13.25N	55.96W	2.00	-2.71	
2400.00	13.50	283.320	2393.77	18.24N	77.02W	2.00	-3.74	
2475.60	15.01	283.320	2467.04	22.53N	95.14W	2.00	-4.61	
2500.00	15.01	283.320	2490.61	23.99N	101.29W	==>	-4.91	
2600.00	15.01	283.320	2587.20	29.96N	126.49W	==>	-6.13	
2700.00	15.01	283.320	2683.78	35.92N	151.70W	==>	-7.36	
2800.00	15.01	283.320	2780.37	41.89N	176.90W	==>	-8.58	
2900.00	15.01	283.320	2876.96	47.86N	202.11W	==>	-9.80	
3000.00	15.01	283.320	2973.54	53.83N	227.31W	==>	-11.02	

All data is in Feet unless otherwise stated
Coordinates are from Slot MD's are from Rig and TVD's are from Rig (Planned Datum #1 5160.0ft above Mean Sea Level)
Vertical Section is from 0.00N 0.00E on azimuth 190.620 degrees
Bottom hole distance is 7075.56 Feet on azimuth 190.62 degrees from Wellhead
Calculation method uses Minimum Curvature method
Prepared by Integrated Petroleum Technologies, Inc.
Date Printed: 5-Oct-2015



SYSDRILL
Well Design Combined Report
Wellbore: HOMESTEAD 10 (PWB)

Interpolated Wellpath								
MD[ft]	Inc[deg]	Azi[deg]	TVD[ft]	North[ft]	East[ft]	Dogleg [deg/100ft]	Vertical Section[ft]	All Station Comments
3100.00	15.01	283.320	3070.13	59.80N	252.52W	==>	-12.25	
3200.00	15.01	283.320	3166.72	65.77N	277.72W	==>	-13.47	
3300.00	15.01	283.320	3263.31	71.74N	302.93W	==>	-14.69	
3400.00	15.01	283.320	3359.89	77.71N	328.13W	==>	-15.91	
3500.00	15.01	283.320	3456.48	83.68N	353.34W	==>	-17.14	
3600.00	15.01	283.320	3553.07	89.65N	378.54W	==>	-18.36	
3700.00	15.01	283.320	3649.65	95.61N	403.75W	==>	-19.58	
3800.00	15.01	283.320	3746.24	101.58N	428.95W	==>	-20.80	
3900.00	15.01	283.320	3842.83	107.55N	454.16W	==>	-22.03	
4000.00	15.01	283.320	3939.42	113.52N	479.36W	==>	-23.25	
4100.00	15.01	283.320	4036.00	119.49N	504.57W	==>	-24.47	
4200.00	15.01	283.320	4132.59	125.46N	529.77W	==>	-25.69	
4300.00	15.01	283.320	4229.18	131.43N	554.98W	==>	-26.92	
4400.00	15.01	283.320	4325.76	137.40N	580.18W	==>	-28.14	
4500.00	15.01	283.320	4422.35	143.37N	605.39W	==>	-29.36	
4600.00	15.01	283.320	4518.94	149.33N	630.59W	==>	-30.58	
4700.00	15.01	283.320	4615.53	155.30N	655.80W	==>	-31.81	
4800.00	15.01	283.320	4712.11	161.27N	681.00W	==>	-33.03	
4900.00	15.01	283.320	4808.70	167.24N	706.21W	==>	-34.25	
5000.00	15.01	283.320	4905.29	173.21N	731.41W	==>	-35.47	
5100.00	15.01	283.320	5001.87	179.18N	756.62W	==>	-36.70	
5200.00	15.01	283.320	5098.46	185.15N	781.82W	==>	-37.92	
5300.00	15.01	283.320	5195.05	191.12N	807.03W	==>	-39.14	
5400.00	15.01	283.320	5291.64	197.09N	832.23W	==>	-40.36	
5500.00	15.01	283.320	5388.22	203.05N	857.44W	==>	-41.59	
5600.00	15.01	283.320	5484.81	209.02N	882.64W	==>	-42.81	
5700.00	15.01	283.320	5581.40	214.99N	907.85W	==>	-44.03	
5800.00	15.01	283.320	5677.98	220.96N	933.05W	==>	-45.25	
5900.00	15.01	283.320	5774.57	226.93N	958.26W	==>	-46.48	
6000.00	15.01	283.320	5871.16	232.90N	983.46W	==>	-47.70	
6100.00	15.01	283.320	5967.75	238.87N	1008.67W	==>	-48.92	
6200.00	15.01	283.320	6064.33	244.84N	1033.87W	==>	-50.14	
6300.00	15.01	283.320	6160.92	250.81N	1059.08W	==>	-51.37	
6400.00	15.01	283.320	6257.51	256.77N	1084.28W	==>	-52.59	
6500.00	15.01	283.320	6354.10	262.74N	1109.49W	==>	-53.81	
6600.00	15.01	283.320	6450.68	268.71N	1134.69W	==>	-55.03	
6700.00	15.01	283.320	6547.27	274.68N	1159.90W	==>	-56.25	
6800.00	15.01	283.320	6643.86	280.65N	1185.10W	==>	-57.48	
6900.00	15.01	283.320	6740.44	286.62N	1210.31W	==>	-58.70	
7000.00	15.01	283.320	6837.03	292.59N	1235.52W	==>	-59.92	
7069.79	15.01	283.320	6904.44	296.75N	1253.11W	==>	-60.78	End of Hold
7100.00	14.59	271.590	6933.65	297.76N	1260.72W	10.00	-60.36	
7200.00	17.29	235.870	7030.03	289.75N	1285.67W	10.00	-47.90	
7300.00	24.09	214.760	7123.65	264.58N	1309.67W	10.00	-18.73	
7400.00	32.52	203.270	7211.68	223.01N	1331.98W	10.00	26.24	
7500.00	41.59	196.240	7291.43	166.31N	1351.94W	10.00	85.65	7.0in Intermediate Casing S/C Kick off Point/Target, HOMESTEAD 10 T1
7600.00	50.96	191.370	7360.50	96.19N	1368.92W	10.00	157.69	
7700.00	60.48	187.670	7416.77	14.79N	1382.41W	10.00	240.19	
7800.00	70.09	184.600	7458.53	75.42S	1392.02W	10.00	330.62	
7900.00	79.74	181.900	7484.53	171.70S	1397.43W	10.00	426.25	
8000.00	89.42	179.350	7493.97	271.12S	1398.50W	10.00	524.16	
8006.00	90.00	179.200	7494.00	277.12S	1398.42W	10.00	530.05	
8006.47	90.04	179.190	7494.00	277.59S	1398.41W	10.00	530.51	
8100.00	90.04	179.190	7493.93	371.11S	1397.09W	==>	622.18	
8200.00	90.04	179.190	7493.86	471.10S	1395.67W	==>	720.20	
8300.00	90.04	179.190	7493.78	571.09S	1394.25W	==>	818.21	
8400.00	90.04	179.190	7493.71	671.08S	1392.84W	==>	916.23	
8500.00	90.04	179.190	7493.63	771.07S	1391.42W	==>	1014.25	
8600.00	90.04	179.190	7493.56	871.06S	1390.00W	==>	1112.26	
8700.00	90.04	179.190	7493.48	971.05S	1388.58W	==>	1210.28	

All data is in Feet unless otherwise stated
Coordinates are from Slot MD's are from Rig and TVD's are from Rig (Planned Datum #1 5160.0ft above Mean Sea Level)
Vertical Section is from 0.00N 0.00E on azimuth 190.620 degrees
Bottom hole distance is 7075.56 Feet on azimuth 190.62 degrees from Wellhead
Calculation method uses Minimum Curvature method
Prepared by Integrated Petroleum Technologies, Inc.
Date Printed: 5-Oct-2015



SYSDRILL
Well Design Combined Report
Wellbore: HOMESTEAD 10 (PWB)

Interpolated Wellpath								
MD[ft]	Inc[deg]	Azi[deg]	TVD[ft]	North[ft]	East[ft]	Dogleg [deg/100ft]	Vertical Section[ft]	All Station Comments
8800.00	90.04	179.190	7493.41	1071.04S	1387.16W	==>	1308.30	
8900.00	90.04	179.190	7493.33	1171.03S	1385.75W	==>	1406.31	
9000.00	90.04	179.190	7493.26	1271.02S	1384.33W	==>	1504.33	
9100.00	90.04	179.190	7493.18	1371.01S	1382.91W	==>	1602.35	
9200.00	90.04	179.190	7493.11	1471.00S	1381.49W	==>	1700.36	
9300.00	90.04	179.190	7493.03	1570.99S	1380.08W	==>	1798.38	
9400.00	90.04	179.190	7492.96	1670.98S	1378.66W	==>	1896.40	
9500.00	90.04	179.190	7492.88	1770.97S	1377.24W	==>	1994.41	
9600.00	90.04	179.190	7492.81	1870.96S	1375.82W	==>	2092.43	
9700.00	90.04	179.190	7492.73	1970.95S	1374.41W	==>	2190.45	
9800.00	90.04	179.190	7492.66	2070.94S	1372.99W	==>	2288.46	
9900.00	90.04	179.190	7492.58	2170.93S	1371.57W	==>	2386.48	
10000.00	90.04	179.190	7492.51	2270.92S	1370.15W	==>	2484.50	
10100.00	90.04	179.190	7492.43	2370.91S	1368.73W	==>	2582.51	
10200.00	90.04	179.190	7492.36	2470.90S	1367.32W	==>	2680.53	
10300.00	90.04	179.190	7492.28	2570.89S	1365.90W	==>	2778.55	
10400.00	90.04	179.190	7492.21	2670.88S	1364.48W	==>	2876.56	
10500.00	90.04	179.190	7492.13	2770.87S	1363.06W	==>	2974.58	
10600.00	90.04	179.190	7492.06	2870.86S	1361.65W	==>	3072.60	
10700.00	90.04	179.190	7491.98	2970.85S	1360.23W	==>	3170.61	
10800.00	90.04	179.190	7491.91	3070.84S	1358.81W	==>	3268.63	
10900.00	90.04	179.190	7491.83	3170.83S	1357.39W	==>	3366.65	
11000.00	90.04	179.190	7491.76	3270.82S	1355.97W	==>	3464.66	
11100.00	90.04	179.190	7491.68	3370.81S	1354.56W	==>	3562.68	
11200.00	90.04	179.190	7491.61	3470.80S	1353.14W	==>	3660.70	
11300.00	90.04	179.190	7491.53	3570.79S	1351.72W	==>	3758.71	
11400.00	90.04	179.190	7491.46	3670.78S	1350.30W	==>	3856.73	
11500.00	90.04	179.190	7491.38	3770.77S	1348.89W	==>	3954.75	
11600.00	90.04	179.190	7491.31	3870.75S	1347.47W	==>	4052.76	
11700.00	90.04	179.190	7491.23	3970.74S	1346.05W	==>	4150.78	
11800.00	90.04	179.190	7491.16	4070.73S	1344.63W	==>	4248.80	
11900.00	90.04	179.190	7491.08	4170.72S	1343.22W	==>	4346.81	
12000.00	90.04	179.190	7491.01	4270.71S	1341.80W	==>	4444.83	
12100.00	90.04	179.190	7490.93	4370.70S	1340.38W	==>	4542.85	
12200.00	90.04	179.190	7490.86	4470.69S	1338.96W	==>	4640.86	
12300.00	90.04	179.190	7490.79	4570.68S	1337.54W	==>	4738.88	
12400.00	90.04	179.190	7490.71	4670.67S	1336.13W	==>	4836.90	
12500.00	90.04	179.190	7490.64	4770.66S	1334.71W	==>	4934.91	
12600.00	90.04	179.190	7490.56	4870.65S	1333.29W	==>	5032.93	
12700.00	90.04	179.190	7490.49	4970.64S	1331.87W	==>	5130.95	
12800.00	90.04	179.190	7490.41	5070.63S	1330.46W	==>	5228.96	
12900.00	90.04	179.190	7490.34	5170.62S	1329.04W	==>	5326.98	
13000.00	90.04	179.190	7490.26	5270.61S	1327.62W	==>	5425.00	
13100.00	90.04	179.190	7490.19	5370.60S	1326.20W	==>	5523.01	
13200.00	90.04	179.190	7490.11	5470.59S	1324.79W	==>	5621.03	
13300.00	90.04	179.190	7490.04	5570.58S	1323.37W	==>	5719.05	
13400.00	90.04	179.190	7489.96	5670.57S	1321.95W	==>	5817.06	
13500.00	90.04	179.190	7489.89	5770.56S	1320.53W	==>	5915.08	
13600.00	90.04	179.190	7489.81	5870.55S	1319.11W	==>	6013.10	
13700.00	90.04	179.190	7489.74	5970.54S	1317.70W	==>	6111.11	
13800.00	90.04	179.190	7489.66	6070.53S	1316.28W	==>	6209.13	
13900.00	90.04	179.190	7489.59	6170.52S	1314.86W	==>	6307.15	
14000.00	90.04	179.190	7489.51	6270.51S	1313.44W	==>	6405.16	
14100.00	90.04	179.190	7489.44	6370.50S	1312.03W	==>	6503.18	
14200.00	90.04	179.190	7489.36	6470.49S	1310.61W	==>	6601.19	
14300.00	90.04	179.190	7489.29	6570.48S	1309.19W	==>	6699.21	
14400.00	90.04	179.190	7489.21	6670.47S	1307.77W	==>	6797.23	
14500.00	90.04	179.190	7489.14	6770.46S	1306.36W	==>	6895.24	
14600.00	90.04	179.190	7489.06	6870.45S	1304.94W	==>	6993.26	
14683.97	90.04	179.190	7489.00	6954.41S	1303.75W	==>	7075.56	End of Hold/Target, 4 1/2in Production Liner, HOMESTEAD 10 BH

All data is in Feet unless otherwise stated
Coordinates are from Slot MD's are from Rig and TVD's are from Rig (Planned Datum #1 5160.0ft above Mean Sea Level)
Vertical Section is from 0.00N 0.00E on azimuth 190.620 degrees
Bottom hole distance is 7075.56 Feet on azimuth 190.62 degrees from Wellhead
Calculation method uses Minimum Curvature method
Prepared by Integrated Petroleum Technologies, Inc.
Date Printed: 5-Oct-2015



Hole Sections								
Diameter [in]	Start MD[ft]	Start TVD[ft]	Start North[ft]	Start East[ft]	End MD[ft]	End TVD[ft]	End North[ft]	End East[ft]
13 1/2	23.00	23.00	0.00N	0.00E	1450.00	1450.00	0.00N	0.00E
8 3/4	1450.00	1450.00	0.00N	0.00E	8006.00	7494.00	277.12S	1398.42W
6 1/8	8006.00	7494.00	277.12S	1398.42W	14683.97	7489.00	6954.41S	1303.75W

Casings								
Name	Top MD[ft]	Top TVD[ft]	Top North[ft]	Top East[ft]	Shoe MD[ft]	Shoe TVD[ft]	Shoe North[ft]	Shoe East[ft]
9 5/8in Surface Casing	23.00	23.00	0.00N	0.00E	1450.00	1450.00	0.00N	0.00E
7.0in Intermediate Casing	23.00	23.00	0.00N	0.00E	8006.00	7494.00	277.12S	1398.42W
4 1/2in Production Liner	7110.00	6943.33	297.74N	1263.23W	14683.97	7489.00	6954.41S	1303.75W

Targets							
Name	North[ft]	East[ft]	TVD[ft]	Latitude	Longitude	Northing	Easting
HOMESTEAD 10 BH	6954.41S	1303.75W	7489.00	39.98814000	-104.76363000	1239383.25	3206330.20
HOMESTEAD 10 T1	277.59S	1398.41W	7494.00	40.00647000	-104.76377000	1246059.83	3206235.54

Survey Tool Program					
Reference	Survey Name	MD[ft]	TVD[ft]	Survey Tool	Error Model
400592	Planned	14683.97	7489.00	ISCWSA MWD	Rev 3 + Fixed Rig + Rotating

Notes

All data is in Feet unless otherwise stated
Coordinates are from Slot MD's are from Rig and TVD's are from Rig (Planned Datum #1 5160.0ft above Mean Sea Level)
Vertical Section is from 0.00N 0.00E on azimuth 190.620 degrees
Bottom hole distance is 7075.56 Feet on azimuth 190.62 degrees from Wellhead
Calculation method uses Minimum Curvature method
Prepared by Integrated Petroleum Technologies, Inc.
Date Printed: 5-Oct-2015



SYSDRILL
Closest Approach + Clearance Factor Summary Report
Wellbore: HOMESTEAD 10 (PWB)

Ellipse separations are reported ONLY if BOTH wells have uncertainty data
Only Depth and Magnetic Reference Field error terms are correlated across tie points
Scan limit is calculated on CENTRE to CENTRE distance
Summary data uses Closest Approach clearance calculation for all minima
Hole size/Casings ARE included
Hole size/Casings are NOT subtracted from Centre-Centre distance
Confidence limit of 95.00% / 2.80 SD.

Wellbore		
Name	Created	Last Revised
HOMESTEAD 10 (PWB)	18-Aug-2015	24-Sep-2015

Well		
Name	Government ID	Last Revised
HOMESTEAD 10		18-Aug-2015

Slot						
Name	Latitude	Longitude	Grid Northing	Grid Easting	North	East
HOMESTEAD 10	40.00720000	-104.75877000	1246337.4099	3207633.9045	4.84N	142.83E

Installation						
Name	Installation Position (Latitude)	Installation Position (Longitude)	Easting	Northing	Coord System Name	North Alignment
Homestead	40.00719000	-104.75928000	3207491.0767	1246332.5735	CO83-NF on NORTH AMERICAN DATUM 1983 datum	Grid

Clearance Summary								
Offset WellName	Separation [ft]	MD[ft]	Diverging From[ft]	Ellipse Separation [ft]	Ellipse MD[ft]	Clearance Factor	Clearance MD[ft]	
HOMESTEAD 9	16.81	1700.00	1700.00	-135.64	14683.97	0.59	14683.97	
HOMESTEAD 11	16.81	1729.04	1729.04	6.08	1761.85	1.13	14683.97	
HOMESTEAD 8	30.81	1650.00	1650.00	20.59	1663.42	1.42	14683.97	
HOMESTEAD 12	33.62	1729.04	14683.97	18.99	14683.97	1.05	14683.97	
HOMESTEAD 7	47.62	1625.00	1625.00	37.53	1647.02	1.54	14683.97	
HOMESTEAD 6	64.43	1600.00	1600.00	54.45	1623.00	2.08	14683.97	
HOMESTEAD 5	78.44	1549.00	1549.00	68.80	1549.00	2.75	14683.97	
HOMESTEAD 4	95.25	1524.00	1524.00	85.75	1548.59	3.08	14683.97	
HOMESTEAD 3	112.05	1499.38	1499.38	102.67	1523.00	3.61	14683.97	
HOMESTEAD 2	128.91	1473.00	14683.97	119.64	1433.76	4.23	14683.97	
HOMESTEAD 1	142.91	1448.00	1448.00	133.56	1448.00	4.62	14683.97	
HOMESTEAD 13	209.61	2286.78	14683.97	194.65	14683.97	1.55	14683.97	
HOMESTEAD 14	241.05	2171.95	14683.97	227.52	2188.35	2.18	14683.97	
HOMESTEAD 15	262.95	2123.00	14683.97	249.75	2155.55	2.47	14683.97	
HOMESTEAD 16	288.62	2057.12	14683.97	275.85	2073.52	2.91	14683.97	
HOMESTEAD 17	313.54	1975.10	14683.97	301.30	1991.50	3.46	14683.97	
HOMESTEAD 18	333.57	1923.00	14683.97	321.69	1942.29	3.82	14683.97	
HOMESTEAD 19	355.06	1843.87	14683.97	343.60	1860.27	4.27	14683.97	
HOMESTEAD 20	374.20	1761.85	14683.97	363.23	1778.25	4.79	14683.97	
HOMESTEAD 21	389.39	1532.19	14683.97	379.48	1663.42	5.18	14683.97	
HOMESTEAD 22	406.19	1506.00	14683.97	396.74	1532.19	5.63	14683.97	
HOMESTEAD 23	423.00	1481.00	14683.97	413.70	1515.78	6.13	14683.97	
HOMESTEAD 24	437.01	1456.00	14683.97	427.76	1433.76	6.53	14683.97	

All data is in Feet unless otherwise stated
Coordinates are from Slot MD's are from Rig and TVD's are from Rig (Planned Datum #1 5160.0ft above Mean Sea Level)
Vertical Section is from 0.00N 0.00E on azimuth 190.620 degrees
Prepared by Integrated Petroleum Technologies, Inc.
Date Printed: 5-Oct-2015

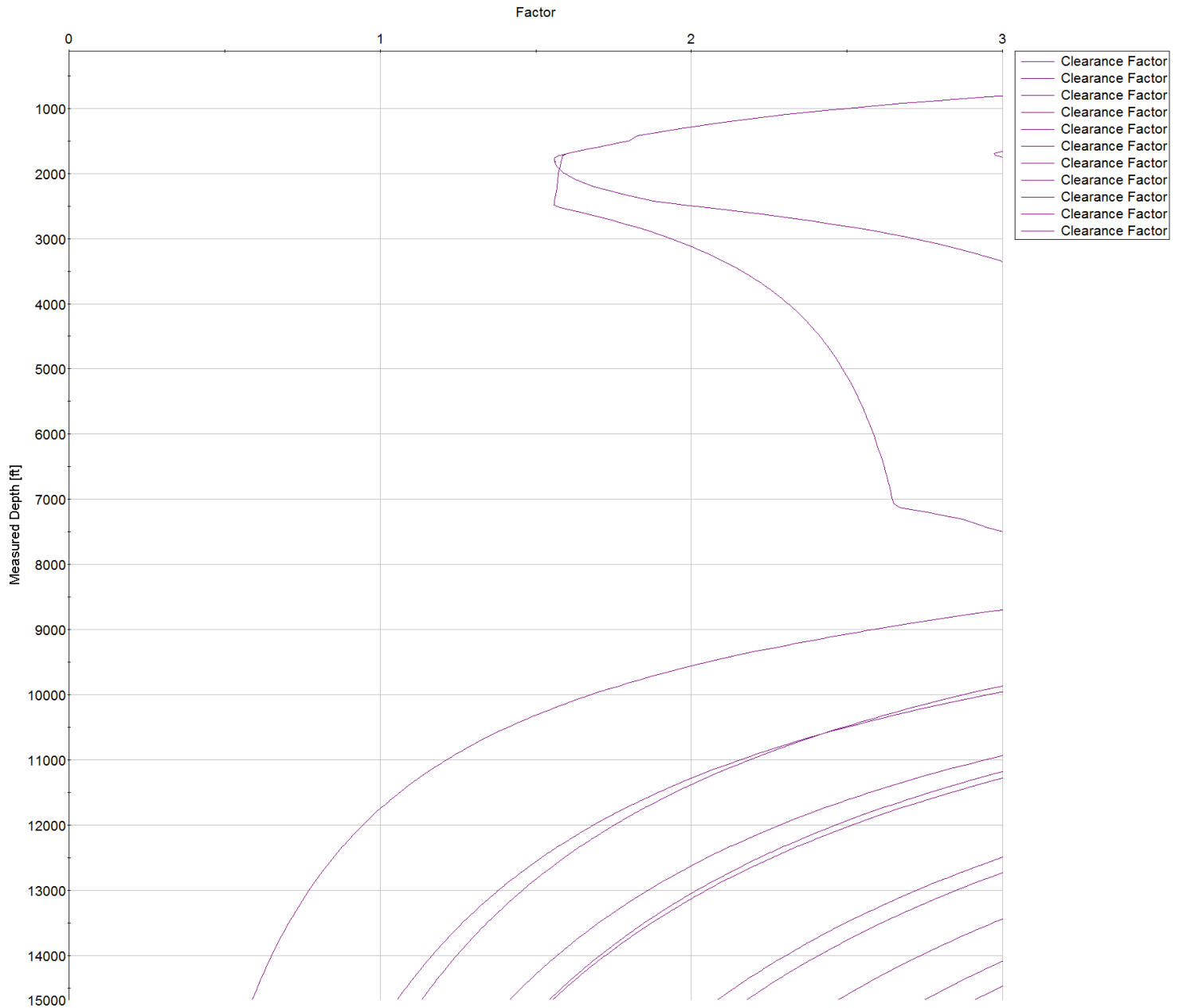


SYSDRILL
Closest Approach + Clearance Factor Summary Report
Wellbore: HOMESTEAD 10 (PWB)

Clearance Summary							
Offset WellName	Separation [ft]	MD[ft]	Diverging From[ft]	Ellipse Separation [ft]	Ellipse MD[ft]	Clearance Factor	Clearance MD[ft]
BERGMAN #2	849.45	13802.53	13802.53	669.17	13851.74	4.64	13933.76
WILLARD, JOHN W. GAS UNIT #1	1087.11	4288.09	4288.09	1048.02	4435.73	21.89	6847.15
BERGMAN #1	2465.44	10884.18	10884.18	2357.41	10915.39	22.39	11259.88
BEN STEVENSON GAS UNIT #1	2595.66	14683.97	14683.97	2441.68	14683.97	16.86	14683.97
UPRR 50 PAN AM M #1	2762.33	1729.04	9192.95	2744.78	1745.44	45.93	10866.18
VISTA USX #WW33-08D	3324.51	7585.34	7585.34	3264.52	7585.34	46.33	9881.92
BRIGHTON COMPANY #1	4804.74	13524.49	13524.49	4632.06	13605.68	26.22	14683.97
SHAW A #1	6139.13	14683.97	14683.97	5974.25	14683.97	37.23	14683.97

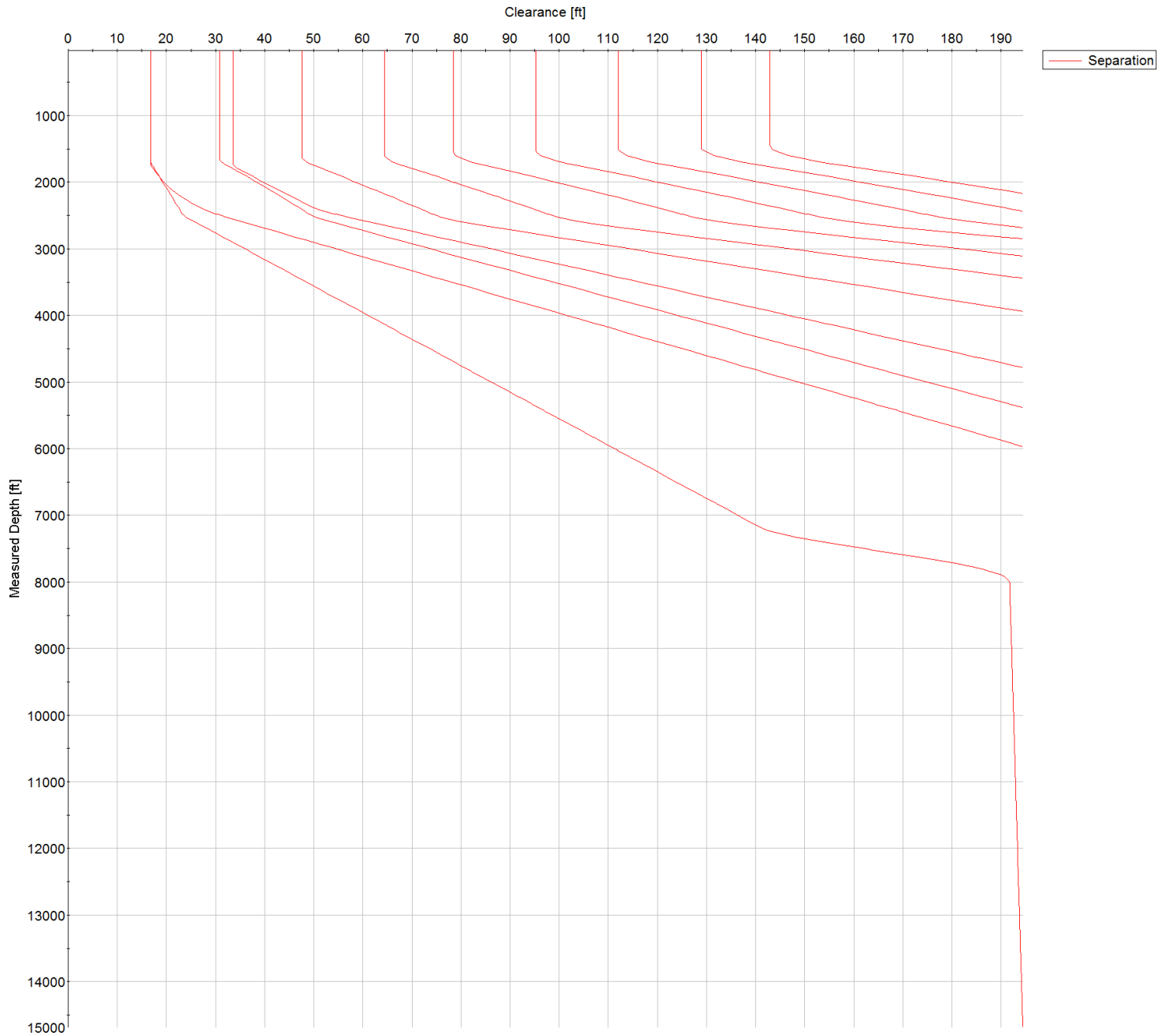


SYSDRILL
Closest Approach + Clearance Factor Summary Report
Wellbore: HOMESTEAD 10 (PWB)





SYSDRILL
Closest Approach + Clearance Factor Summary Report
Wellbore: HOMESTEAD 10 (PWB)



All data is in Feet unless otherwise stated
Coordinates are from Slot MD's are from Rig and TVD's are from Rig (Planned Datum #1 5160.0ft above Mean Sea Level)
Vertical Section is from 0.00N 0.00E on azimuth 190.620 degrees
Prepared by Integrated Petroleum Technologies, Inc.
Date Printed: 5-Oct-2015

