

Petro Operating Company

Location Weld County, CO
Field Wattenberg
Installation Homestead

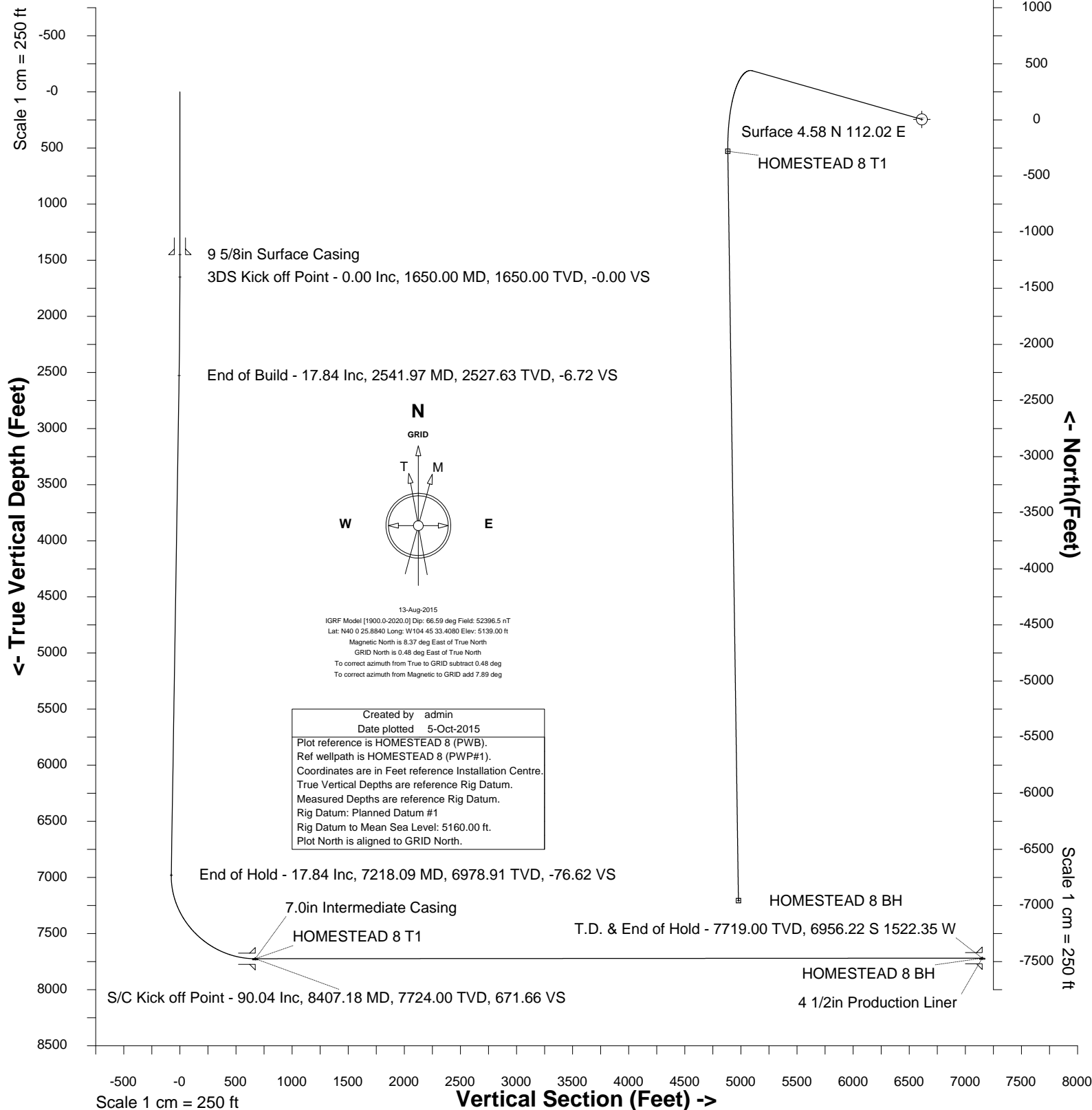
Slot HOMESTEAD 8
Well HOMESTEAD 8
Wellbore HOMESTEAD 8 (PWB)



Scale 1 cm = 250 ft

East (Feet) ->

-2000 -1500 -1000 -500 0 500





SYSDRILL
Well Design Combined Report
Wellbore: HOMESTEAD 8 (PWB)

Wellhead Details							
Name	Latitude	Longitude	Northing	Easting	North	East	Slot Elevation Above Ground
HOMESTEAD 8	40.00720000	-104.75888000	1246337.1523	3207603.0919	4.58N	112.02E	0.00

Declination		
Date	Source	Time
13-Aug-2015	IGRF Model [1900.0-2020.0]	08:38

Installation Details						
Name	Installation Position (Latitude)	Installation Position (Longitude)	Northing	Easting	Coord System Name	North Alignment
Homestead	40.00719000	-104.75928000	1246332.5735	3207491.0767	CO83-NF on NORTH AMERICAN DATUM 1983 datum	Grid

Summary Wellpath									
MD[ft]	Inc[deg]	Azi[deg]	TVD[ft]	North[ft]	East[ft]	Dogleg [deg/100ft]	Vertical Section[ft]	Northing	Easting
23.00	0.00	0.000	23.00	0.00N	0.00E		0.00	1246337.15	3207603.09
1650.00	0.00	286.010	1650.00	0.00N	0.00E	==>	0.00	1246337.15	3207603.09
2541.97	17.84	286.010	2527.63	37.99N	132.40W	2.00	-6.72	1246375.14	3207470.70
7218.09	17.84	286.010	6978.91	433.10N	1509.36W	==>	-76.62	1246770.24	3206093.78
8407.18	90.04	179.190	7724.00	283.97S	1728.93W	8.00	671.65	1246053.19	3205874.22
15084.68	90.04	179.190	7719.00	6960.80S	1634.36W	==>	7150.09	1239376.61	3205968.79

Interpolated Wellpath								
MD[ft]	Inc[deg]	Azi[deg]	TVD[ft]	North[ft]	East[ft]	Dogleg [deg/100ft]	Vertical Section[ft]	All Station Comments
0.00	0.00	0.000	0.00	0.00N	0.00E		0.00	Rig Datum
23.00	0.00	0.000	23.00	0.00N	0.00E	==>	0.00	Slot Datum
100.00	0.00	0.000	100.00	0.00N	0.00E	==>	0.00	
200.00	0.00	0.000	200.00	0.00N	0.00E	==>	0.00	
300.00	0.00	0.000	300.00	0.00N	0.00E	==>	0.00	
400.00	0.00	0.000	400.00	0.00N	0.00E	==>	0.00	
500.00	0.00	0.000	500.00	0.00N	0.00E	==>	0.00	
600.00	0.00	0.000	600.00	0.00N	0.00E	==>	0.00	
700.00	0.00	0.000	700.00	0.00N	0.00E	==>	0.00	
800.00	0.00	0.000	800.00	0.00N	0.00E	==>	0.00	
900.00	0.00	0.000	900.00	0.00N	0.00E	==>	0.00	
1000.00	0.00	0.000	1000.00	0.00N	0.00E	==>	0.00	
1100.00	0.00	0.000	1100.00	0.00N	0.00E	==>	0.00	
1200.00	0.00	0.000	1200.00	0.00N	0.00E	==>	0.00	
1300.00	0.00	0.000	1300.00	0.00N	0.00E	==>	0.00	
1400.00	0.00	0.000	1400.00	0.00N	0.00E	==>	0.00	9 5/8in Surface Casing
1450.00	0.00	0.000	1450.00	0.00N	0.00E	==>	0.00	
1500.00	0.00	0.000	1500.00	0.00N	0.00E	==>	0.00	
1600.00	0.00	0.000	1600.00	0.00N	0.00E	==>	0.00	
1650.00	0.00	286.010	1650.00	0.00N	0.00E	==>	0.00	
1700.00	1.00	286.010	1700.00	0.12N	0.42W	2.00	-0.02	3DS Kick off Point
1800.00	3.00	286.010	1799.93	1.08N	3.77W	2.00	-0.19	
1900.00	5.00	286.010	1899.68	3.01N	10.48W	2.00	-0.53	
2000.00	7.00	286.010	1999.13	5.89N	20.53W	2.00	-1.04	
2100.00	9.00	286.010	2098.15	9.73N	33.90W	2.00	-1.72	
2200.00	11.00	286.010	2196.63	14.52N	50.59W	2.00	-2.57	End of Build
2300.00	13.00	286.010	2294.44	20.25N	70.58W	2.00	-3.58	
2400.00	15.00	286.010	2391.46	26.92N	93.83W	2.00	-4.76	
2500.00	17.00	286.010	2487.58	34.53N	120.32W	2.00	-6.11	
2541.97	17.84	286.010	2527.63	37.99N	132.40W	2.00	-6.72	
2600.00	17.84	286.010	2582.87	42.89N	149.49W	==>	-7.59	
2700.00	17.84	286.010	2678.06	51.34N	178.93W	==>	-9.08	
2800.00	17.84	286.010	2773.25	59.79N	208.38W	==>	-10.58	
2900.00	17.84	286.010	2868.44	68.24N	237.83W	==>	-12.07	
3000.00	17.84	286.010	2963.64	76.69N	267.27W	==>	-13.57	
3100.00	17.84	286.010	3058.83	85.14N	296.72W	==>	-15.06	

All data is in Feet unless otherwise stated
Coordinates are from Slot MD's are from Rig and TVD's are from Rig (Planned Datum #1 5160.0ft above Mean Sea Level)
Vertical Section is from 0.00N 0.00E on azimuth 193.210 degrees
Bottom hole distance is 7150.09 Feet on azimuth 193.21 degrees from Wellhead
Calculation method uses Minimum Curvature method
Prepared by Integrated Petroleum Technologies, Inc.
Date Printed: 5-Oct-2015



SYSDRILL
Well Design Combined Report
Wellbore: HOMESTEAD 8 (PWB)

Interpolated Wellpath								
MD[ft]	Inc[deg]	Azi[deg]	TVD[ft]	North[ft]	East[ft]	Dogleg [deg/100ft]	Vertical Section[ft]	All Station Comments
3200.00	17.84	286.010	3154.02	93.59N	326.17W	==>	-16.56	
3300.00	17.84	286.010	3249.21	102.04N	355.61W	==>	-18.05	
3400.00	17.84	286.010	3344.40	110.49N	385.06W	==>	-19.55	
3500.00	17.84	286.010	3439.59	118.94N	414.51W	==>	-21.04	
3600.00	17.84	286.010	3534.79	127.39N	443.95W	==>	-22.54	
3700.00	17.84	286.010	3629.98	135.84N	473.40W	==>	-24.03	
3800.00	17.84	286.010	3725.17	144.29N	502.85W	==>	-25.53	
3900.00	17.84	286.010	3820.36	152.74N	532.29W	==>	-27.02	
4000.00	17.84	286.010	3915.55	161.19N	561.74W	==>	-28.52	
4100.00	17.84	286.010	4010.75	169.64N	591.19W	==>	-30.01	
4200.00	17.84	286.010	4105.94	178.09N	620.63W	==>	-31.51	
4300.00	17.84	286.010	4201.13	186.54N	650.08W	==>	-33.00	
4400.00	17.84	286.010	4296.32	194.99N	679.53W	==>	-34.50	
4500.00	17.84	286.010	4391.51	203.43N	708.97W	==>	-35.99	
4600.00	17.84	286.010	4486.71	211.88N	738.42W	==>	-37.49	
4700.00	17.84	286.010	4581.90	220.33N	767.87W	==>	-38.98	
4800.00	17.84	286.010	4677.09	228.78N	797.31W	==>	-40.48	
4900.00	17.84	286.010	4772.28	237.23N	826.76W	==>	-41.97	
5000.00	17.84	286.010	4867.47	245.68N	856.21W	==>	-43.47	
5100.00	17.84	286.010	4962.67	254.13N	885.65W	==>	-44.96	
5200.00	17.84	286.010	5057.86	262.58N	915.10W	==>	-46.46	
5300.00	17.84	286.010	5153.05	271.03N	944.55W	==>	-47.95	
5400.00	17.84	286.010	5248.24	279.48N	973.99W	==>	-49.45	
5500.00	17.84	286.010	5343.43	287.93N	1003.44W	==>	-50.94	
5600.00	17.84	286.010	5438.62	296.38N	1032.89W	==>	-52.44	
5700.00	17.84	286.010	5533.82	304.83N	1062.34W	==>	-53.93	
5800.00	17.84	286.010	5629.01	313.28N	1091.78W	==>	-55.43	
5900.00	17.84	286.010	5724.20	321.73N	1121.23W	==>	-56.92	
6000.00	17.84	286.010	5819.39	330.18N	1150.68W	==>	-58.41	
6100.00	17.84	286.010	5914.58	338.63N	1180.12W	==>	-59.91	
6200.00	17.84	286.010	6009.78	347.08N	1209.57W	==>	-61.40	
6300.00	17.84	286.010	6104.97	355.53N	1239.02W	==>	-62.90	
6400.00	17.84	286.010	6200.16	363.97N	1268.46W	==>	-64.39	
6500.00	17.84	286.010	6295.35	372.42N	1297.91W	==>	-65.89	
6600.00	17.84	286.010	6390.54	380.87N	1327.36W	==>	-67.38	
6700.00	17.84	286.010	6485.74	389.32N	1356.80W	==>	-68.88	
6800.00	17.84	286.010	6580.93	397.77N	1386.25W	==>	-70.37	
6900.00	17.84	286.010	6676.12	406.22N	1415.70W	==>	-71.87	
7000.00	17.84	286.010	6771.31	414.67N	1445.14W	==>	-73.36	
7100.00	17.84	286.010	6866.50	423.12N	1474.59W	==>	-74.86	
7200.00	17.84	286.010	6961.70	431.57N	1504.04W	==>	-76.35	
7218.09	17.84	286.010	6978.91	433.10N	1509.36W	==>	-76.62	
7300.00	17.18	264.220	7057.11	435.34N	1533.49W	8.00	-73.29	
7400.00	19.50	239.670	7152.17	425.41N	1562.64W	8.00	-56.96	
7500.00	24.27	222.290	7245.03	401.74N	1590.92W	8.00	-27.45	
7600.00	30.37	210.920	7333.90	364.79N	1617.78W	8.00	14.66	
7700.00	37.14	203.210	7417.03	315.28N	1642.71W	8.00	68.56	
7800.00	44.27	197.630	7492.82	254.17N	1665.20W	8.00	133.19	
7900.00	51.61	193.330	7559.78	182.66N	1684.84W	8.00	207.29	
8000.00	59.08	189.840	7616.62	102.13N	1701.23W	8.00	289.44	
8100.00	66.62	186.850	7662.23	14.16N	1714.06W	8.00	378.01	
8200.00	74.22	184.200	7695.71	79.55S	1723.07W	8.00	471.30	
8300.00	81.85	181.730	7716.43	177.16S	1728.09W	8.00	567.48	
8400.00	89.49	179.360	7723.97	276.79S	1729.03W	8.00	664.69	
8407.00	90.03	179.190	7724.00	283.79S	1728.94W	8.00	671.48	7.0in Intermediate Casing S/C Kick off Point/Target, HOMESTEAD 8 T1
8407.18	90.04	179.190	7724.00	283.97S	1728.93W	8.00	671.65	
8500.00	90.04	179.190	7723.93	376.78S	1727.62W	==>	761.71	
8600.00	90.04	179.190	7723.86	476.77S	1726.20W	==>	858.73	
8700.00	90.04	179.190	7723.78	576.76S	1724.79W	==>	955.75	
8800.00	90.04	179.190	7723.71	676.75S	1723.37W	==>	1052.76	
8900.00	90.04	179.190	7723.63	776.74S	1721.96W	==>	1149.78	
9000.00	90.04	179.190	7723.56	876.73S	1720.54W	==>	1246.80	

All data is in Feet unless otherwise stated
Coordinates are from Slot MD's are from Rig and TVD's are from Rig (Planned Datum #1 5160.0ft above Mean Sea Level)
Vertical Section is from 0.00N 0.00E on azimuth 193.210 degrees
Bottom hole distance is 7150.09 Feet on azimuth 193.21 degrees from Wellhead
Calculation method uses Minimum Curvature method
Prepared by Integrated Petroleum Technologies, Inc.
Date Printed: 5-Oct-2015



SYSDRILL
Well Design Combined Report
Wellbore: HOMESTEAD 8 (PWB)

Interpolated Wellpath								
MD[ft]	Inc[deg]	Azi[deg]	TVD[ft]	North[ft]	East[ft]	Dogleg [deg/100ft]	Vertical Section[ft]	All Station Comments
9100.00	90.04	179.190	7723.48	976.72S	1719.12W	==>	1343.82	
9200.00	90.04	179.190	7723.41	1076.71S	1717.71W	==>	1440.84	
9300.00	90.04	179.190	7723.33	1176.70S	1716.29W	==>	1537.86	
9400.00	90.04	179.190	7723.26	1276.69S	1714.87W	==>	1634.88	
9500.00	90.04	179.190	7723.18	1376.68S	1713.46W	==>	1731.90	
9600.00	90.04	179.190	7723.11	1476.67S	1712.04W	==>	1828.92	
9700.00	90.04	179.190	7723.03	1576.66S	1710.63W	==>	1925.94	
9800.00	90.04	179.190	7722.96	1676.65S	1709.21W	==>	2022.95	
9900.00	90.04	179.190	7722.88	1776.64S	1707.79W	==>	2119.97	
10000.00	90.04	179.190	7722.81	1876.63S	1706.38W	==>	2216.99	
10100.00	90.04	179.190	7722.73	1976.62S	1704.96W	==>	2314.01	
10200.00	90.04	179.190	7722.66	2076.61S	1703.54W	==>	2411.03	
10300.00	90.04	179.190	7722.58	2176.60S	1702.13W	==>	2508.05	
10400.00	90.04	179.190	7722.51	2276.59S	1700.71W	==>	2605.07	
10500.00	90.04	179.190	7722.43	2376.58S	1699.30W	==>	2702.09	
10600.00	90.04	179.190	7722.36	2476.57S	1697.88W	==>	2799.11	
10700.00	90.04	179.190	7722.28	2576.56S	1696.46W	==>	2896.13	
10800.00	90.04	179.190	7722.21	2676.55S	1695.05W	==>	2993.14	
10900.00	90.04	179.190	7722.13	2776.54S	1693.63W	==>	3090.16	
11000.00	90.04	179.190	7722.06	2876.53S	1692.21W	==>	3187.18	
11100.00	90.04	179.190	7721.98	2976.52S	1690.80W	==>	3284.20	
11200.00	90.04	179.190	7721.91	3076.51S	1689.38W	==>	3381.22	
11300.00	90.04	179.190	7721.83	3176.50S	1687.97W	==>	3478.24	
11400.00	90.04	179.190	7721.76	3276.49S	1686.55W	==>	3575.26	
11500.00	90.04	179.190	7721.68	3376.48S	1685.13W	==>	3672.28	
11600.00	90.04	179.190	7721.61	3476.47S	1683.72W	==>	3769.30	
11700.00	90.04	179.190	7721.53	3576.46S	1682.30W	==>	3866.32	
11800.00	90.04	179.190	7721.46	3676.45S	1680.88W	==>	3963.33	
11900.00	90.04	179.190	7721.38	3776.44S	1679.47W	==>	4060.35	
12000.00	90.04	179.190	7721.31	3876.43S	1678.05W	==>	4157.37	
12100.00	90.04	179.190	7721.23	3976.42S	1676.64W	==>	4254.39	
12200.00	90.04	179.190	7721.16	4076.41S	1675.22W	==>	4351.41	
12300.00	90.04	179.190	7721.09	4176.40S	1673.80W	==>	4448.43	
12400.00	90.04	179.190	7721.01	4276.39S	1672.39W	==>	4545.45	
12500.00	90.04	179.190	7720.94	4376.38S	1670.97W	==>	4642.47	
12600.00	90.04	179.190	7720.86	4476.37S	1669.55W	==>	4739.49	
12700.00	90.04	179.190	7720.79	4576.36S	1668.14W	==>	4836.51	
12800.00	90.04	179.190	7720.71	4676.35S	1666.72W	==>	4933.52	
12900.00	90.04	179.190	7720.64	4776.34S	1665.31W	==>	5030.54	
13000.00	90.04	179.190	7720.56	4876.33S	1663.89W	==>	5127.56	
13100.00	90.04	179.190	7720.49	4976.32S	1662.47W	==>	5224.58	
13200.00	90.04	179.190	7720.41	5076.31S	1661.06W	==>	5321.60	
13300.00	90.04	179.190	7720.34	5176.30S	1659.64W	==>	5418.62	
13400.00	90.04	179.190	7720.26	5276.29S	1658.22W	==>	5515.64	
13500.00	90.04	179.190	7720.19	5376.28S	1656.81W	==>	5612.66	
13600.00	90.04	179.190	7720.11	5476.27S	1655.39W	==>	5709.68	
13700.00	90.04	179.190	7720.04	5576.26S	1653.98W	==>	5806.70	
13800.00	90.04	179.190	7719.96	5676.25S	1652.56W	==>	5903.71	
13900.00	90.04	179.190	7719.89	5776.24S	1651.14W	==>	6000.73	
14000.00	90.04	179.190	7719.81	5876.23S	1649.73W	==>	6097.75	
14100.00	90.04	179.190	7719.74	5976.22S	1648.31W	==>	6194.77	
14200.00	90.04	179.190	7719.66	6076.21S	1646.89W	==>	6291.79	
14300.00	90.04	179.190	7719.59	6176.20S	1645.48W	==>	6388.81	
14400.00	90.04	179.190	7719.51	6276.19S	1644.06W	==>	6485.83	
14500.00	90.04	179.190	7719.44	6376.18S	1642.65W	==>	6582.85	
14600.00	90.04	179.190	7719.36	6476.17S	1641.23W	==>	6679.87	
14700.00	90.04	179.190	7719.29	6576.16S	1639.81W	==>	6776.89	
14800.00	90.04	179.190	7719.21	6676.15S	1638.40W	==>	6873.91	End of Hold/Target, 4 1/2in Production Liner, HOMESTEAD 8 BH
14900.00	90.04	179.190	7719.14	6776.14S	1636.98W	==>	6970.92	
15000.00	90.04	179.190	7719.06	6876.13S	1635.56W	==>	7067.94	
15084.68	90.04	179.190	7719.00	6960.80S	1634.36W	==>	7150.09	

All data is in Feet unless otherwise stated
Coordinates are from Slot MD's are from Rig and TVD's are from Rig (Planned Datum #1 5160.0ft above Mean Sea Level)
Vertical Section is from 0.00N 0.00E on azimuth 193.210 degrees
Bottom hole distance is 7150.09 Feet on azimuth 193.21 degrees from Wellhead
Calculation method uses Minimum Curvature method
Prepared by Integrated Petroleum Technologies, Inc.
Date Printed: 5-Oct-2015



SYSDRILL
Well Design Combined Report
Wellbore: HOMESTEAD 8 (PWB)

Hole Sections

Diameter [in]	Start MD[ft]	Start TVD[ft]	Start North[ft]	Start East[ft]	End MD[ft]	End TVD[ft]	End North[ft]	End East[ft]
13 1/2	23.00	23.00	0.00N	0.00E	1450.00	1450.00	0.00N	0.00E
8 3/4	1450.00	1450.00	0.00N	0.00E	8407.00	7724.00	283.79S	1728.94W
6 1/8	8407.00	7724.00	283.79S	1728.94W	15084.68	7719.00	6960.80S	1634.36W

Casings

Name	Top MD[ft]	Top TVD[ft]	Top North[ft]	Top East[ft]	Shoe MD[ft]	Shoe TVD[ft]	Shoe North[ft]	Shoe East[ft]
9 5/8in Surface Casing	23.00	23.00	0.00N	0.00E	1450.00	1450.00	0.00N	0.00E
7.0in Intermediate Casing	23.00	23.00	0.00N	0.00E	8407.00	7724.00	283.79S	1728.94W
4 1/2in Production Liner	7285.00	7042.78	435.63N	1529.07W	15084.68	7719.00	6960.80S	1634.36W

Targets

Name	North[ft]	East[ft]	TVD[ft]	Latitude	Longitude	Northing	Easting
HOMESTEAD 8 BH	6960.80S	1634.36W	7719.00	39.98813000	-104.76492000	1239376.61	3205968.79
HOMESTEAD 8 T1	283.97S	1728.93W	7724.00	40.00646000	-104.76506000	1246053.19	3205874.22

Survey Tool Program

Reference	Survey Name	MD[ft]	TVD[ft]	Survey Tool	Error Model
400551	Planned	15084.68	7719.00	ISCWSA MWD	Rev 3 + Fixed Rig + Rotating

Notes

All data is in Feet unless otherwise stated
Coordinates are from Slot MD's are from Rig and TVD's are from Rig (Planned Datum #1 5160.0ft above Mean Sea Level)
Vertical Section is from 0.00N 0.00E on azimuth 193.210 degrees
Bottom hole distance is 7150.09 Feet on azimuth 193.21 degrees from Wellhead
Calculation method uses Minimum Curvature method
Prepared by Integrated Petroleum Technologies, Inc.
Date Printed: 5-Oct-2015



SYSDRILL
Closest Approach + Clearance Factor Summary Report
Wellbore: HOMESTEAD 8 (PWB)

Ellipse separations are reported ONLY if BOTH wells have uncertainty data
Only Depth and Magnetic Reference Field error terms are correlated across tie points
Scan limit is calculated on CENTRE to CENTRE distance
Summary data uses Closest Approach clearance calculation for all minima
Hole size/Casings ARE included
Hole size/Casings are NOT subtracted from Centre-Centre distance
Confidence limit of 95.00% / 2.80 SD.

Wellbore		
Name	Created	Last Revised
HOMESTEAD 8 (PWB)	17-Aug-2015	24-Sep-2015

Well		
Name	Government ID	Last Revised
HOMESTEAD 8		17-Aug-2015

Slot						
Name	Latitude	Longitude	Grid Northing	Grid Easting	North	East
HOMESTEAD 8	40.00720000	-104.75888000	1246337.1523	3207603.0919	4.58N	112.02E

Installation						
Name	Installation Position (Latitude)	Installation Position (Longitude)	Easting	Northing	Coord System Name	North Alignment
Homestead	40.00719000	-104.75928000	3207491.0767	1246332.5735	CO83-NF on NORTH AMERICAN DATUM 1983 datum	Grid

Clearance Summary								
Offset WellName	Separation [ft]	MD[ft]	Diverging From[ft]	Ellipse Separation [ft]	Ellipse MD[ft]	Clearance Factor	Clearance MD[ft]	
HOMESTEAD 9	14.01	1650.00	15084.68	-32.63	15084.68	0.88	15084.68	
HOMESTEAD 7	16.81	1625.00	8331.65	6.72	1650.00	1.11	15084.68	
HOMESTEAD 10	30.81	1650.00	1650.00	20.54	1663.42	1.42	15082.06	
HOMESTEAD 6	33.62	1600.00	1600.00	23.64	1623.00	1.19	15084.68	
HOMESTEAD 5	47.62	1549.00	1549.00	37.98	1549.00	1.54	15084.68	
HOMESTEAD 11	47.62	1650.00	8407.18	37.35	1663.42	1.54	15084.68	
HOMESTEAD 4	64.43	1524.00	1524.00	54.93	1548.59	2.20	15084.68	
HOMESTEAD 12	64.43	1650.00	15084.68	54.16	1663.42	2.16	15084.68	
HOMESTEAD 3	81.24	1499.38	1499.38	71.85	1523.00	2.62	15084.68	
HOMESTEAD 2	98.11	1473.00	15082.06	88.84	1433.76	3.08	15084.68	
HOMESTEAD 1	112.11	1448.00	1448.00	102.75	1448.00	3.65	15084.68	
HOMESTEAD 13	252.67	2221.16	15084.68	238.91	2237.57	2.75	15084.68	
HOMESTEAD 14	281.79	2106.33	15084.68	268.63	2139.14	3.03	15084.68	
HOMESTEAD 15	303.10	2057.12	15084.68	290.31	2089.93	3.55	15082.06	
HOMESTEAD 16	327.36	1991.50	15084.68	314.99	2007.91	4.05	15082.06	
HOMESTEAD 17	350.29	1909.48	15084.68	338.44	1925.89	4.38	15084.68	
HOMESTEAD 18	369.06	1843.87	15084.68	357.59	1860.27	4.89	15084.68	
HOMESTEAD 19	388.73	1729.04	15084.68	377.85	1778.25	5.37	15084.68	
HOMESTEAD 20	405.80	1679.82	15084.68	395.37	1696.23	5.73	15084.68	
HOMESTEAD 21	420.20	1532.19	15084.68	410.31	1650.00	6.23	15084.68	
HOMESTEAD 22	437.01	1506.00	15084.68	427.55	1532.19	6.72	15084.68	
HOMESTEAD 23	453.82	1482.97	15084.68	444.52	1515.78	7.09	15084.68	
HOMESTEAD 24	467.82	1456.00	15084.68	458.57	1433.76	7.58	15084.68	

All data is in Feet unless otherwise stated
Coordinates are from Slot MD's are from Rig and TVD's are from Rig (Planned Datum #1 5160.0ft above Mean Sea Level)
Vertical Section is from 0.00N 0.00E on azimuth 193.210 degrees
Prepared by Integrated Petroleum Technologies, Inc.
Date Printed: 5-Oct-2015

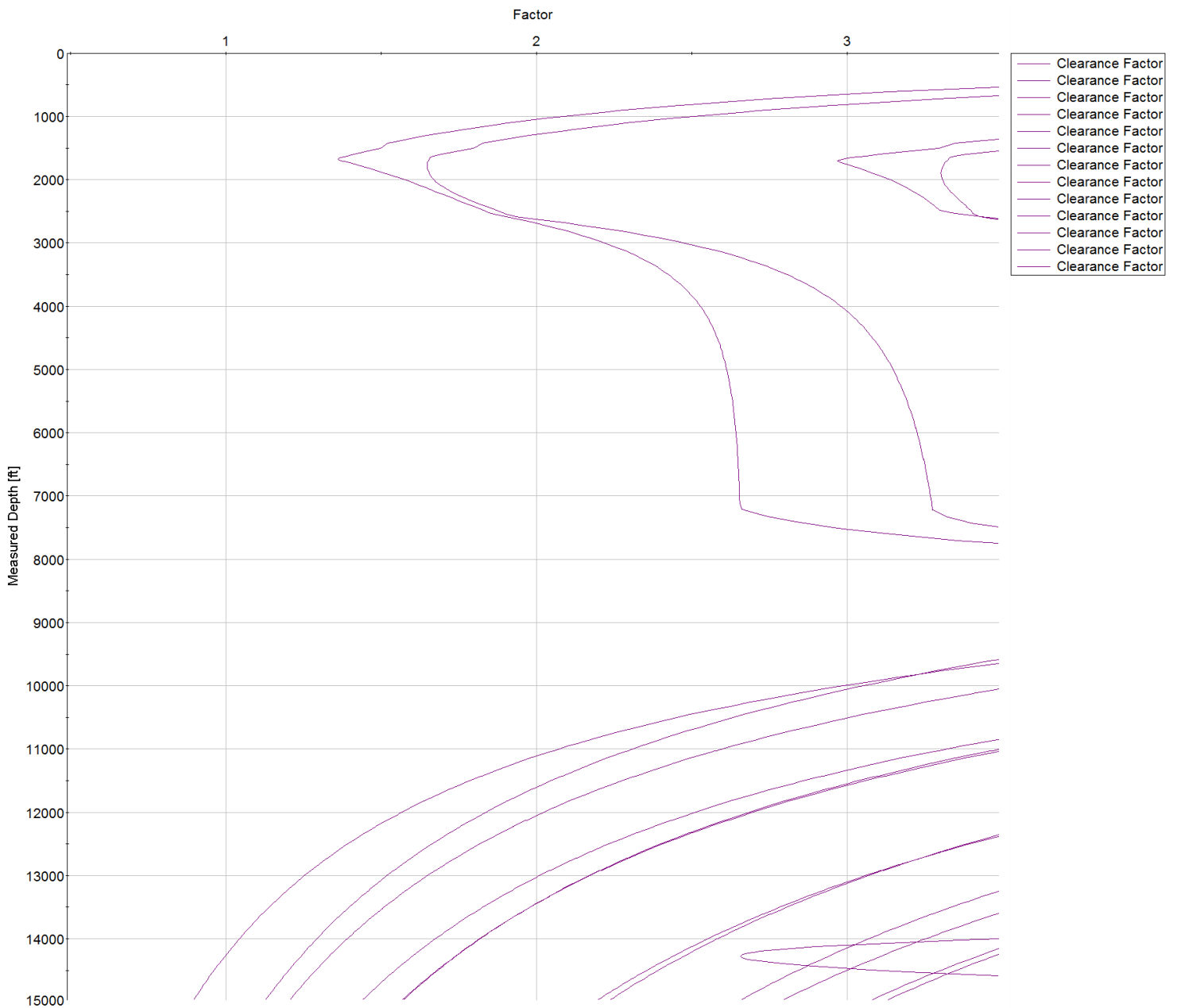


SYSDRILL
Closest Approach + Clearance Factor Summary Report
Wellbore: HOMESTEAD 8 (PWB)

Clearance Summary							
Offset WellName	Separation [ft]	MD[ft]	Diverging From[ft]	Ellipse Separation [ft]	Ellipse MD[ft]	Clearance Factor	Clearance MD[ft]
BERGMAN #2	487.97	14200.22	14200.22	306.15	14245.44	2.66	14278.25
WILLARD, JOHN W. GAS UNIT #1	1068.10	4009.33	4009.33	1029.63	4124.05	22.24	6010.53
UPRR 50 PAN AM M #1	2788.76	1650.00	9588.40	2771.70	1663.42	48.95	11456.73
BEN STEVENSON GAS UNIT #1	2816.91	15084.68	15084.68	2644.48	15084.68	16.34	15084.68
BERGMAN #1	2826.87	11283.33	11283.33	2717.54	11309.09	25.30	11752.00
VISTA USX #WW33-08D	2965.31	7929.82	7929.82	2902.65	7946.23	40.64	9881.92
BRIGHTON COMPANY #1	5166.21	13923.61	13923.61	4992.56	14015.78	28.00	15084.68
SHAW A #1	6384.53	15084.68	15084.68	6208.93	15084.68	36.36	15084.68



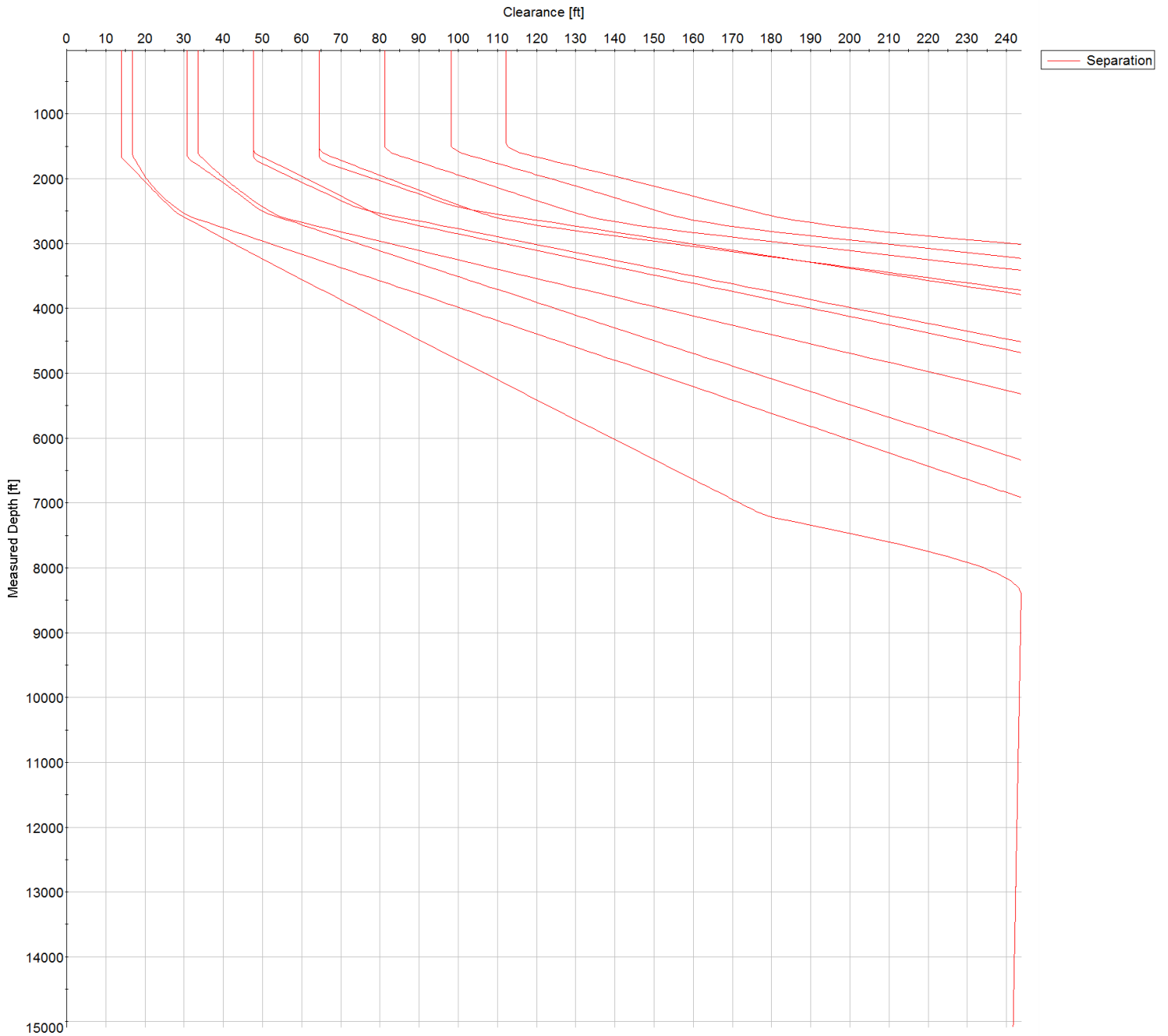
SYSDRILL
Closest Approach + Clearance Factor Summary Report
Wellbore: HOMESTEAD 8 (PWB)



All data is in Feet unless otherwise stated
Coordinates are from Slot MD's are from Rig and TVD's are from Rig (Planned Datum #1 5160.0ft above Mean Sea Level)
Vertical Section is from 0.00N 0.00E on azimuth 193.210 degrees
Prepared by Integrated Petroleum Technologies, Inc.
Date Printed: 5-Oct-2015



SYSDRILL
Closest Approach + Clearance Factor Summary Report
Wellbore: HOMESTEAD 8 (PWB)



All data is in Feet unless otherwise stated
Coordinates are from Slot MD's are from Rig and TVD's are from Rig (Planned Datum #1 5160.0ft above Mean Sea Level)
Vertical Section is from 0.00N 0.00E on azimuth 193.210 degrees
Prepared by Integrated Petroleum Technologies, Inc.
Date Printed: 5-Oct-2015

