

Petro Operating Company

Location Weld County, CO
Field Wattenberg
Installation Homestead

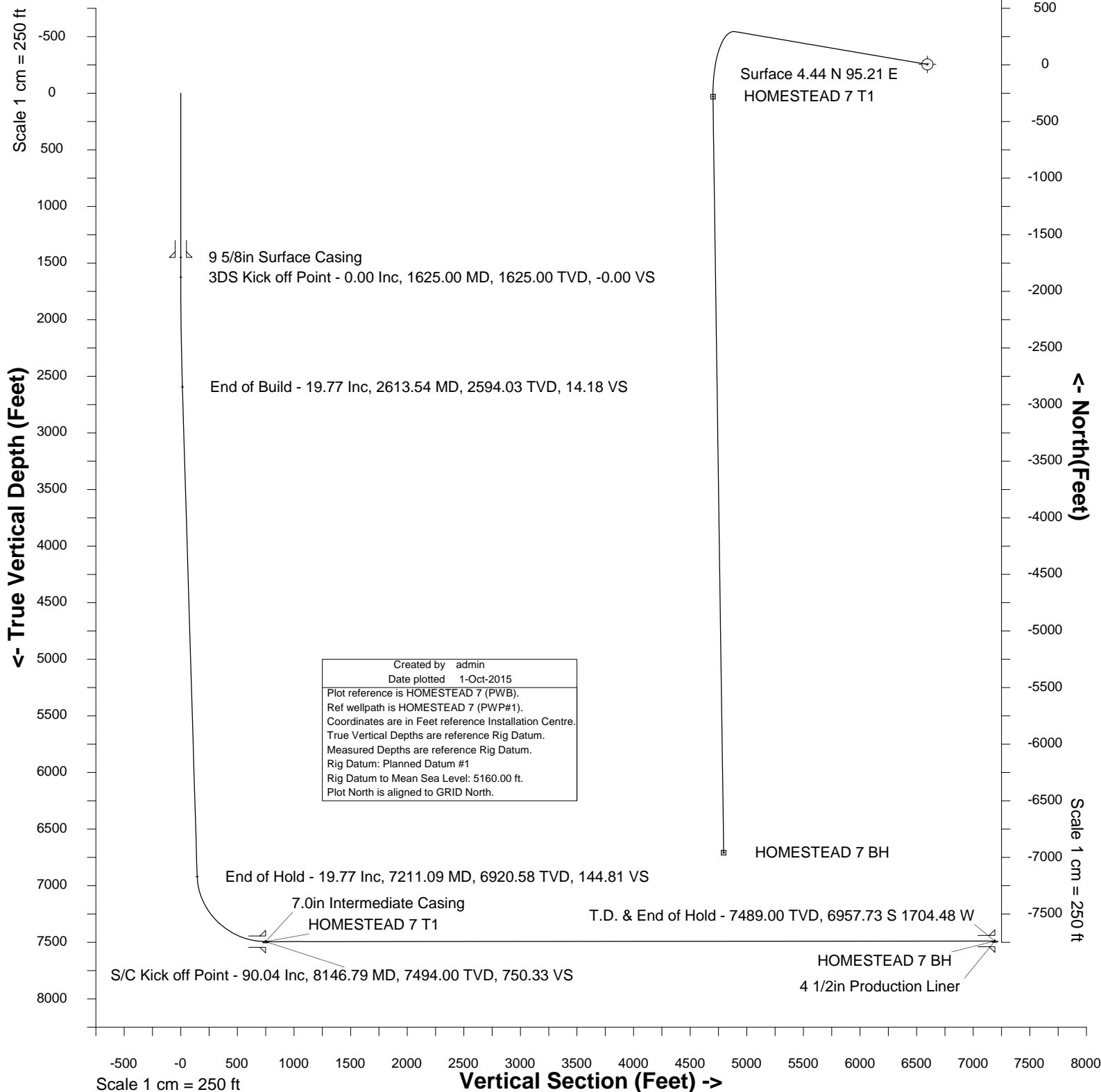
Slot HOMESTEAD 7
Well HOMESTEAD 7
Wellbore HOMESTEAD 7 (PWB)



Scale 1 cm = 250 ft

East (Feet) ->

-2500 -2000 -1500 -1000 -500 -0 500



Created by admin
Date plotted 1-Oct-2015
Plot reference is HOMESTEAD 7 (PWB).
Ref wellpath is HOMESTEAD 7 (PWP#1).
Coordinates are in Feet reference Installation Centre.
True Vertical Depths are reference Rig Datum.
Measured Depths are reference Rig Datum.
Rig Datum: Planned Datum #1
Rig Datum to Mean Sea Level: 5160.00 ft.
Plot North is aligned to GRID North.

Azimuth 194.49 with reference 4.44 N, 95.21 E from Installation Centre



SYSDRILL
Well Design Combined Report
Wellbore: HOMESTEAD 7 (PWB)

Wellhead Details							
Name	Latitude	Longitude	Northing	Easting	North	East	Slot Elevation Above Ground
HOMESTEAD 7	40.00720000	-104.75894000	1246337.0119	3207586.2851	4.44N	95.21E	0.00

Declination		
Date	Source	Time
13-Aug-2015	IGRF Model [1900.0-2020.0]	08:38

Installation Details						
Name	Installation Position (Latitude)	Installation Position (Longitude)	Northing	Easting	Coord System Name	North Alignment
Homestead	40.00719000	-104.75928000	1246332.5735	3207491.0767	CO83-NF on NORTH AMERICAN DATUM 1983 datum	Grid

Summary Wellpath									
MD[ft]	Inc[deg]	Azi[deg]	TVD[ft]	North[ft]	East[ft]	Dogleg [deg/100ft]	Vertical Section[ft]	Northing	Easting
23.00	0.00	0.000	23.00	0.00N	0.00E		0.00	1246337.01	3207586.29
1625.00	0.00	279.680	1625.00	0.00N	0.00E	==>	0.00	1246337.01	3207586.29
2613.54	19.77	279.680	2594.03	28.38N	166.47W	2.00	14.18	1246365.39	3207419.82
7211.09	19.77	279.680	6920.58	289.75N	1699.50W	==>	144.80	1246626.75	3205886.85
8146.79	90.04	179.190	7494.00	285.34S	1894.21W	10.00	750.32	1246051.68	3205692.14
14824.29	90.04	179.190	7489.00	6962.17S	1799.69W	==>	7191.01	1239375.10	3205786.66

Interpolated Wellpath								
MD[ft]	Inc[deg]	Azi[deg]	TVD[ft]	North[ft]	East[ft]	Dogleg [deg/100ft]	Vertical Section[ft]	All Station Comments
0.00	0.00	0.000	0.00	0.00N	0.00E		0.00	Rig Datum
23.00	0.00	0.000	23.00	0.00N	0.00E	==>	0.00	Slot Datum
100.00	0.00	0.000	100.00	0.00N	0.00E	==>	0.00	
200.00	0.00	0.000	200.00	0.00N	0.00E	==>	0.00	
300.00	0.00	0.000	300.00	0.00N	0.00E	==>	0.00	
400.00	0.00	0.000	400.00	0.00N	0.00E	==>	0.00	
500.00	0.00	0.000	500.00	0.00N	0.00E	==>	0.00	
600.00	0.00	0.000	600.00	0.00N	0.00E	==>	0.00	
700.00	0.00	0.000	700.00	0.00N	0.00E	==>	0.00	
800.00	0.00	0.000	800.00	0.00N	0.00E	==>	0.00	
900.00	0.00	0.000	900.00	0.00N	0.00E	==>	0.00	
1000.00	0.00	0.000	1000.00	0.00N	0.00E	==>	0.00	
1100.00	0.00	0.000	1100.00	0.00N	0.00E	==>	0.00	
1200.00	0.00	0.000	1200.00	0.00N	0.00E	==>	0.00	
1300.00	0.00	0.000	1300.00	0.00N	0.00E	==>	0.00	
1400.00	0.00	0.000	1400.00	0.00N	0.00E	==>	0.00	
1450.00	0.00	0.000	1450.00	0.00N	0.00E	==>	0.00	9 5/8in Surface Casing
1500.00	0.00	0.000	1500.00	0.00N	0.00E	==>	0.00	
1600.00	0.00	0.000	1600.00	0.00N	0.00E	==>	0.00	
1625.00	0.00	279.680	1625.00	0.00N	0.00E	==>	0.00	3DS Kick off Point
1700.00	1.50	279.680	1699.99	0.16N	0.97W	2.00	0.08	
1800.00	3.50	279.680	1799.89	0.90N	5.27W	2.00	0.45	
1900.00	5.50	279.680	1899.58	2.22N	13.00W	2.00	1.11	
2000.00	7.50	279.680	1998.93	4.12N	24.16W	2.00	2.06	
2100.00	9.50	279.680	2097.83	6.60N	38.73W	2.00	3.30	
2200.00	11.50	279.680	2196.15	9.67N	56.69W	2.00	4.83	
2300.00	13.50	279.680	2293.77	13.30N	78.03W	2.00	6.65	
2400.00	15.50	279.680	2390.58	17.51N	102.71W	2.00	8.75	
2500.00	17.50	279.680	2486.46	22.28N	130.71W	2.00	11.14	
2600.00	19.50	279.680	2581.29	27.62N	161.98W	2.00	13.80	
2613.54	19.77	279.680	2594.03	28.38N	166.47W	2.00	14.18	End of Build
2700.00	19.77	279.680	2675.40	33.30N	195.30W	==>	16.64	
2800.00	19.77	279.680	2769.51	38.98N	228.64W	==>	19.48	
2900.00	19.77	279.680	2863.61	44.67N	261.99W	==>	22.32	
3000.00	19.77	279.680	2957.72	50.35N	295.33W	==>	25.16	
3100.00	19.77	279.680	3051.82	56.04N	328.68W	==>	28.00	

All data is in Feet unless otherwise stated
Coordinates are from Slot MD's are from Rig and TVD's are from Rig (Planned Datum #1 5160.0ft above Mean Sea Level)
Vertical Section is from 0.00N 0.00E on azimuth 194.490 degrees
Bottom hole distance is 7191.01 Feet on azimuth 194.49 degrees from Wellhead
Calculation method uses Minimum Curvature method
Prepared by Integrated Petroleum Technologies, Inc.
Date Printed: 1-Oct-2015



SYSDRILL
Well Design Combined Report
Wellbore: HOMESTEAD 7 (PWB)

Interpolated Wellpath								
MD[ft]	Inc[deg]	Azi[deg]	TVD[ft]	North[ft]	East[ft]	Dogleg [deg/100ft]	Vertical Section[ft]	All Station Comments
3200.00	19.77	279.680	3145.93	61.72N	362.02W	==>	30.85	
3300.00	19.77	279.680	3240.03	67.41N	395.36W	==>	33.69	
3400.00	19.77	279.680	3334.14	73.09N	428.71W	==>	36.53	
3500.00	19.77	279.680	3428.25	78.78N	462.05W	==>	39.37	
3600.00	19.77	279.680	3522.35	84.46N	495.40W	==>	42.21	
3700.00	19.77	279.680	3616.46	90.15N	528.74W	==>	45.05	
3800.00	19.77	279.680	3710.56	95.83N	562.09W	==>	47.89	
3900.00	19.77	279.680	3804.67	101.52N	595.43W	==>	50.73	
4000.00	19.77	279.680	3898.77	107.20N	628.78W	==>	53.57	
4100.00	19.77	279.680	3992.88	112.89N	662.12W	==>	56.42	
4200.00	19.77	279.680	4086.98	118.57N	695.47W	==>	59.26	
4300.00	19.77	279.680	4181.09	124.26N	728.81W	==>	62.10	
4400.00	19.77	279.680	4275.19	129.94N	762.15W	==>	64.94	
4500.00	19.77	279.680	4369.30	135.63N	795.50W	==>	67.78	
4600.00	19.77	279.680	4463.40	141.31N	828.84W	==>	70.62	
4700.00	19.77	279.680	4557.51	147.00N	862.19W	==>	73.46	
4800.00	19.77	279.680	4651.62	152.68N	895.53W	==>	76.30	
4900.00	19.77	279.680	4745.72	158.37N	928.88W	==>	79.14	
5000.00	19.77	279.680	4839.83	164.05N	962.22W	==>	81.99	
5100.00	19.77	279.680	4933.93	169.73N	995.57W	==>	84.83	
5200.00	19.77	279.680	5028.04	175.42N	1028.91W	==>	87.67	
5300.00	19.77	279.680	5122.14	181.10N	1062.26W	==>	90.51	
5400.00	19.77	279.680	5216.25	186.79N	1095.60W	==>	93.35	
5500.00	19.77	279.680	5310.35	192.47N	1128.94W	==>	96.19	
5600.00	19.77	279.680	5404.46	198.16N	1162.29W	==>	99.03	
5700.00	19.77	279.680	5498.56	203.84N	1195.63W	==>	101.87	
5800.00	19.77	279.680	5592.67	209.53N	1228.98W	==>	104.71	
5900.00	19.77	279.680	5686.77	215.21N	1262.32W	==>	107.56	
6000.00	19.77	279.680	5780.88	220.90N	1295.67W	==>	110.40	
6100.00	19.77	279.680	5874.99	226.58N	1329.01W	==>	113.24	
6200.00	19.77	279.680	5969.09	232.27N	1362.36W	==>	116.08	
6300.00	19.77	279.680	6063.20	237.95N	1395.70W	==>	118.92	
6400.00	19.77	279.680	6157.30	243.64N	1429.05W	==>	121.76	
6500.00	19.77	279.680	6251.41	249.32N	1462.39W	==>	124.60	
6600.00	19.77	279.680	6345.51	255.01N	1495.73W	==>	127.44	
6700.00	19.77	279.680	6439.62	260.69N	1529.08W	==>	130.28	
6800.00	19.77	279.680	6533.72	266.38N	1562.42W	==>	133.13	
6900.00	19.77	279.680	6627.83	272.06N	1595.77W	==>	135.97	
7000.00	19.77	279.680	6721.93	277.75N	1629.11W	==>	138.81	
7100.00	19.77	279.680	6816.04	283.43N	1662.46W	==>	141.65	
7200.00	19.77	279.680	6910.14	289.12N	1695.80W	==>	144.49	
7211.09	19.77	279.680	6920.58	289.75N	1699.50W	==>	144.80	
7300.00	20.16	253.460	7004.31	287.91N	1729.07W	10.00	153.99	
7400.00	24.61	229.690	7096.94	269.49N	1761.56W	10.00	179.95	
7500.00	31.58	214.310	7185.22	234.30N	1792.28W	10.00	221.71	
7600.00	39.75	204.360	7266.46	183.42N	1820.29W	10.00	277.98	
7700.00	48.52	197.420	7338.21	118.39N	1844.75W	10.00	347.06	
7800.00	57.60	192.170	7398.28	41.18N	1864.91W	10.00	426.86	
7900.00	66.86	187.890	7444.84	45.85S	1880.16W	10.00	514.93	
8000.00	76.22	184.180	7476.48	140.06S	1890.03W	10.00	608.62	
8100.00	85.63	180.750	7492.23	238.59S	1894.24W	10.00	705.07	
8146.00	89.97	179.220	7494.00	284.55S	1894.22W	10.00	749.56	
8146.79	90.04	179.190	7494.00	285.34S	1894.21W	10.00	750.32	
8200.00	90.04	179.190	7493.96	338.54S	1893.46W	==>	801.64	
8300.00	90.04	179.190	7493.89	438.53S	1892.04W	==>	898.09	
8400.00	90.04	179.190	7493.81	538.52S	1890.63W	==>	994.55	
8500.00	90.04	179.190	7493.74	638.51S	1889.21W	==>	1091.00	
8600.00	90.04	179.190	7493.66	738.50S	1887.80W	==>	1187.46	
8700.00	90.04	179.190	7493.59	838.49S	1886.38W	==>	1283.91	
8800.00	90.04	179.190	7493.51	938.48S	1884.96W	==>	1380.36	
8900.00	90.04	179.190	7493.44	1038.47S	1883.55W	==>	1476.82	
9000.00	90.04	179.190	7493.36	1138.46S	1882.13W	==>	1573.27	

All data is in Feet unless otherwise stated
Coordinates are from Slot MD's are from Rig and TVD's are from Rig (Planned Datum #1 5160.0ft above Mean Sea Level)
Vertical Section is from 0.00N 0.00E on azimuth 194.490 degrees
Bottom hole distance is 7191.01 Feet on azimuth 194.49 degrees from Wellhead
Calculation method uses Minimum Curvature method
Prepared by Integrated Petroleum Technologies, Inc.
Date Printed: 1-Oct-2015



SYSDRILL
Well Design Combined Report
Wellbore: HOMESTEAD 7 (PWB)

Interpolated Wellpath								
MD[ft]	Inc[deg]	Azi[deg]	TVD[ft]	North[ft]	East[ft]	Dogleg [deg/100ft]	Vertical Section[ft]	All Station Comments
9100.00	90.04	179.190	7493.29	1238.45S	1880.72W	==>	1669.72	
9200.00	90.04	179.190	7493.21	1338.44S	1879.30W	==>	1766.18	
9300.00	90.04	179.190	7493.14	1438.43S	1877.89W	==>	1862.63	
9400.00	90.04	179.190	7493.06	1538.42S	1876.47W	==>	1959.08	
9500.00	90.04	179.190	7492.99	1638.41S	1875.06W	==>	2055.54	
9600.00	90.04	179.190	7492.91	1738.40S	1873.64W	==>	2151.99	
9700.00	90.04	179.190	7492.84	1838.39S	1872.22W	==>	2248.45	
9800.00	90.04	179.190	7492.76	1938.38S	1870.81W	==>	2344.90	
9900.00	90.04	179.190	7492.69	2038.37S	1869.39W	==>	2441.35	
10000.00	90.04	179.190	7492.61	2138.36S	1867.98W	==>	2537.81	
10100.00	90.04	179.190	7492.54	2238.35S	1866.56W	==>	2634.26	
10200.00	90.04	179.190	7492.46	2338.34S	1865.15W	==>	2730.71	
10300.00	90.04	179.190	7492.39	2438.33S	1863.73W	==>	2827.17	
10400.00	90.04	179.190	7492.31	2538.32S	1862.32W	==>	2923.62	
10500.00	90.04	179.190	7492.24	2638.31S	1860.90W	==>	3020.07	
10600.00	90.04	179.190	7492.16	2738.30S	1859.48W	==>	3116.53	
10700.00	90.04	179.190	7492.09	2838.29S	1858.07W	==>	3212.98	
10800.00	90.04	179.190	7492.01	2938.28S	1856.65W	==>	3309.44	
10900.00	90.04	179.190	7491.94	3038.27S	1855.24W	==>	3405.89	
11000.00	90.04	179.190	7491.86	3138.26S	1853.82W	==>	3502.34	
11100.00	90.04	179.190	7491.79	3238.25S	1852.41W	==>	3598.80	
11200.00	90.04	179.190	7491.71	3338.24S	1850.99W	==>	3695.25	
11300.00	90.04	179.190	7491.64	3438.23S	1849.58W	==>	3791.70	
11400.00	90.04	179.190	7491.56	3538.22S	1848.16W	==>	3888.16	
11500.00	90.04	179.190	7491.49	3638.21S	1846.75W	==>	3984.61	
11600.00	90.04	179.190	7491.41	3738.20S	1845.33W	==>	4081.06	
11700.00	90.04	179.190	7491.34	3838.19S	1843.91W	==>	4177.52	
11800.00	90.04	179.190	7491.26	3938.18S	1842.50W	==>	4273.97	
11900.00	90.04	179.190	7491.19	4038.17S	1841.08W	==>	4370.43	
12000.00	90.04	179.190	7491.11	4138.16S	1839.67W	==>	4466.88	
12100.00	90.04	179.190	7491.04	4238.15S	1838.25W	==>	4563.33	
12200.00	90.04	179.190	7490.97	4338.14S	1836.84W	==>	4659.79	
12300.00	90.04	179.190	7490.89	4438.13S	1835.42W	==>	4756.24	
12400.00	90.04	179.190	7490.82	4538.12S	1834.01W	==>	4852.69	
12500.00	90.04	179.190	7490.74	4638.11S	1832.59W	==>	4949.15	
12600.00	90.04	179.190	7490.67	4738.10S	1831.17W	==>	5045.60	
12700.00	90.04	179.190	7490.59	4838.09S	1829.76W	==>	5142.05	
12800.00	90.04	179.190	7490.52	4938.08S	1828.34W	==>	5238.51	
12900.00	90.04	179.190	7490.44	5038.07S	1826.93W	==>	5334.96	
13000.00	90.04	179.190	7490.37	5138.06S	1825.51W	==>	5431.42	
13100.00	90.04	179.190	7490.29	5238.05S	1824.10W	==>	5527.87	
13200.00	90.04	179.190	7490.22	5338.04S	1822.68W	==>	5624.32	
13300.00	90.04	179.190	7490.14	5438.03S	1821.27W	==>	5720.78	
13400.00	90.04	179.190	7490.07	5538.02S	1819.85W	==>	5817.23	
13500.00	90.04	179.190	7489.99	5638.01S	1818.43W	==>	5913.68	
13600.00	90.04	179.190	7489.92	5738.00S	1817.02W	==>	6010.14	
13700.00	90.04	179.190	7489.84	5837.99S	1815.60W	==>	6106.59	
13800.00	90.04	179.190	7489.77	5937.98S	1814.19W	==>	6203.04	
13900.00	90.04	179.190	7489.69	6037.97S	1812.77W	==>	6299.50	
14000.00	90.04	179.190	7489.62	6137.96S	1811.36W	==>	6395.95	
14100.00	90.04	179.190	7489.54	6237.95S	1809.94W	==>	6492.41	
14200.00	90.04	179.190	7489.47	6337.94S	1808.53W	==>	6588.86	
14300.00	90.04	179.190	7489.39	6437.93S	1807.11W	==>	6685.31	
14400.00	90.04	179.190	7489.32	6537.92S	1805.70W	==>	6781.77	
14500.00	90.04	179.190	7489.24	6637.91S	1804.28W	==>	6878.22	
14600.00	90.04	179.190	7489.17	6737.90S	1802.86W	==>	6974.67	
14700.00	90.04	179.190	7489.09	6837.89S	1801.45W	==>	7071.13	
14800.00	90.04	179.190	7489.02	6937.88S	1800.03W	==>	7167.58	End of Hold/Target, 4 1/2in Production Liner, HOMESTEAD 7 BH
14824.29	90.04	179.190	7489.00	6962.17S	1799.69W	==>	7191.01	

All data is in Feet unless otherwise stated
Coordinates are from Slot MD's are from Rig and TVD's are from Rig (Planned Datum #1 5160.0ft above Mean Sea Level)
Vertical Section is from 0.00N 0.00E on azimuth 194.490 degrees
Bottom hole distance is 7191.01 Feet on azimuth 194.49 degrees from Wellhead
Calculation method uses Minimum Curvature method
Prepared by Integrated Petroleum Technologies, Inc.
Date Printed: 1-Oct-2015



SYSDRILL
Well Design Combined Report
Wellbore: HOMESTEAD 7 (PWB)

Hole Sections								
Diameter [in]	Start MD[ft]	Start TVD[ft]	Start North[ft]	Start East[ft]	End MD[ft]	End TVD[ft]	End North[ft]	End East[ft]
13 1/2	23.00	23.00	0.00N	0.00E	1450.00	1450.00	0.00N	0.00E
8 3/4	1450.00	1450.00	0.00N	0.00E	8146.00	7494.00	284.55S	1894.22W
6 1/8	8146.00	7494.00	284.55S	1894.22W	14824.29	7489.00	6962.17S	1799.69W

Casings								
Name	Top MD[ft]	Top TVD[ft]	Top North[ft]	Top East[ft]	Shoe MD[ft]	Shoe TVD[ft]	Shoe North[ft]	Shoe East[ft]
9 5/8in Surface Casing	23.00	23.00	0.00N	0.00E	1450.00	1450.00	0.00N	0.00E
7.0in Intermediate Casing	23.00	23.00	0.00N	0.00E	8146.00	7494.00	284.55S	1894.22W
4 1/2in Production Liner	7252.00	6959.13	290.62N	1713.14W	14824.29	7489.00	6962.17S	1799.69W

Targets							
Name	North[ft]	East[ft]	TVD[ft]	Latitude	Longitude	Northing	Easting
HOMESTEAD 7 BH	6962.17S	1799.69W	7489.00	39.98813000	-104.76557000	1239375.10	3205786.66
HOMESTEAD 7 T1	285.34S	1894.21W	7494.00	40.00646000	-104.76571000	1246051.68	3205692.14

Survey Tool Program					
Reference	Survey Name	MD[ft]	TVD[ft]	Survey Tool	Error Model
400533	Planned	14824.29	7489.00	ISCWSA MWD	Rev 3 + Fixed Rig + Rotating

Notes



SYSDRILL
Closest Approach + Clearance Factor Summary Report
Wellbore: HOMESTEAD 7 (PWB)

Ellipse separations are reported ONLY if BOTH wells have uncertainty data
Only Depth and Magnetic Reference Field error terms are correlated across tie points
Scan limit is calculated on CENTRE to CENTRE distance
Summary data uses Closest Approach clearance calculation for all minima
Hole size/Casings ARE included
Hole size/Casings are NOT subtracted from Centre-Centre distance
Confidence limit of 95.00% / 2.80 SD.

Wellbore		
Name	Created	Last Revised
HOMESTEAD 7 (PWB)	17-Aug-2015	23-Sep-2015

Well		
Name	Government ID	Last Revised
HOMESTEAD 7		17-Aug-2015

Slot						
Name	Latitude	Longitude	Grid Northing	Grid Easting	North	East
HOMESTEAD 7	40.00720000	-104.75894000	1246337.0119	3207586.2851	4.44N	95.21E

Installation						
Name	Installation Position (Latitude)	Installation Position (Longitude)	Easting	Northing	Coord System Name	North Alignment
Homestead	40.00719000	-104.75928000	3207491.0767	1246332.5735	CO83-NF on NORTH AMERICAN DATUM 1983 datum	Grid

Clearance Summary								
Offset WellName	Separation [ft]	MD[ft]	Diverging From[ft]	Ellipse Separation [ft]	Ellipse MD[ft]	Clearance Factor	Clearance MD[ft]	
HOMESTEAD 8	16.81	1625.00	1625.00	6.67	1663.42	1.11	14824.29	
HOMESTEAD 6	16.81	1600.00	1600.00	-135.63	14824.29	0.59	14824.29	
HOMESTEAD 9	30.81	1625.00	14824.29	17.38	14824.29	1.05	14824.29	
HOMESTEAD 5	30.81	1549.00	1549.00	21.18	1549.00	1.42	14824.29	
HOMESTEAD 10	47.62	1625.00	8146.79	37.49	1647.02	1.54	14823.00	
HOMESTEAD 4	47.62	1524.00	1524.00	38.12	1548.59	1.54	14824.29	
HOMESTEAD 11	64.43	1625.00	1625.00	54.30	1647.02	2.22	14824.29	
HOMESTEAD 3	64.43	1499.38	1499.38	55.05	1523.00	2.08	14824.29	
HOMESTEAD 12	81.24	1625.00	14824.29	71.11	1647.02	2.58	14824.29	
HOMESTEAD 2	81.32	1473.00	14823.00	72.05	1433.76	2.75	14824.29	
HOMESTEAD 1	95.32	1448.00	1448.00	85.96	1448.00	3.07	14824.29	
HOMESTEAD 13	275.46	2171.95	14824.29	261.98	2188.35	3.09	14824.29	
HOMESTEAD 14	303.33	2073.52	14824.29	290.43	2089.93	3.63	14824.29	
BERGMAN #2	305.84	13940.90	13940.90	123.96	13966.57	1.67	13982.97	
HOMESTEAD 15	323.99	2024.31	14824.29	311.42	2040.72	4.01	14823.00	
HOMESTEAD 16	347.48	1958.70	14824.29	335.31	1975.10	4.45	14823.00	
HOMESTEAD 17	369.42	1860.27	14824.29	357.81	1893.08	4.96	14823.00	
HOMESTEAD 18	387.64	1811.06	14824.29	376.34	1827.46	5.36	14824.29	
HOMESTEAD 19	406.05	1663.42	14824.29	395.62	1712.63	5.80	14824.29	
HOMESTEAD 20	422.78	1647.02	14824.29	412.54	1663.42	6.30	14824.29	
HOMESTEAD 21	437.01	1532.19	14824.29	427.14	1630.61	6.72	14824.29	
HOMESTEAD 22	453.82	1506.00	14824.29	444.36	1532.19	7.17	14824.29	
HOMESTEAD 23	470.63	1482.97	14824.29	461.33	1515.78	7.65	14824.29	

All data is in Feet unless otherwise stated
Coordinates are from Slot MD's are from Rig and TVD's are from Rig (Planned Datum #1 5160.0ft above Mean Sea Level)
Vertical Section is from 0.00N 0.00E on azimuth 194.490 degrees
Prepared by Integrated Petroleum Technologies, Inc.
Date Printed: 1-Oct-2015

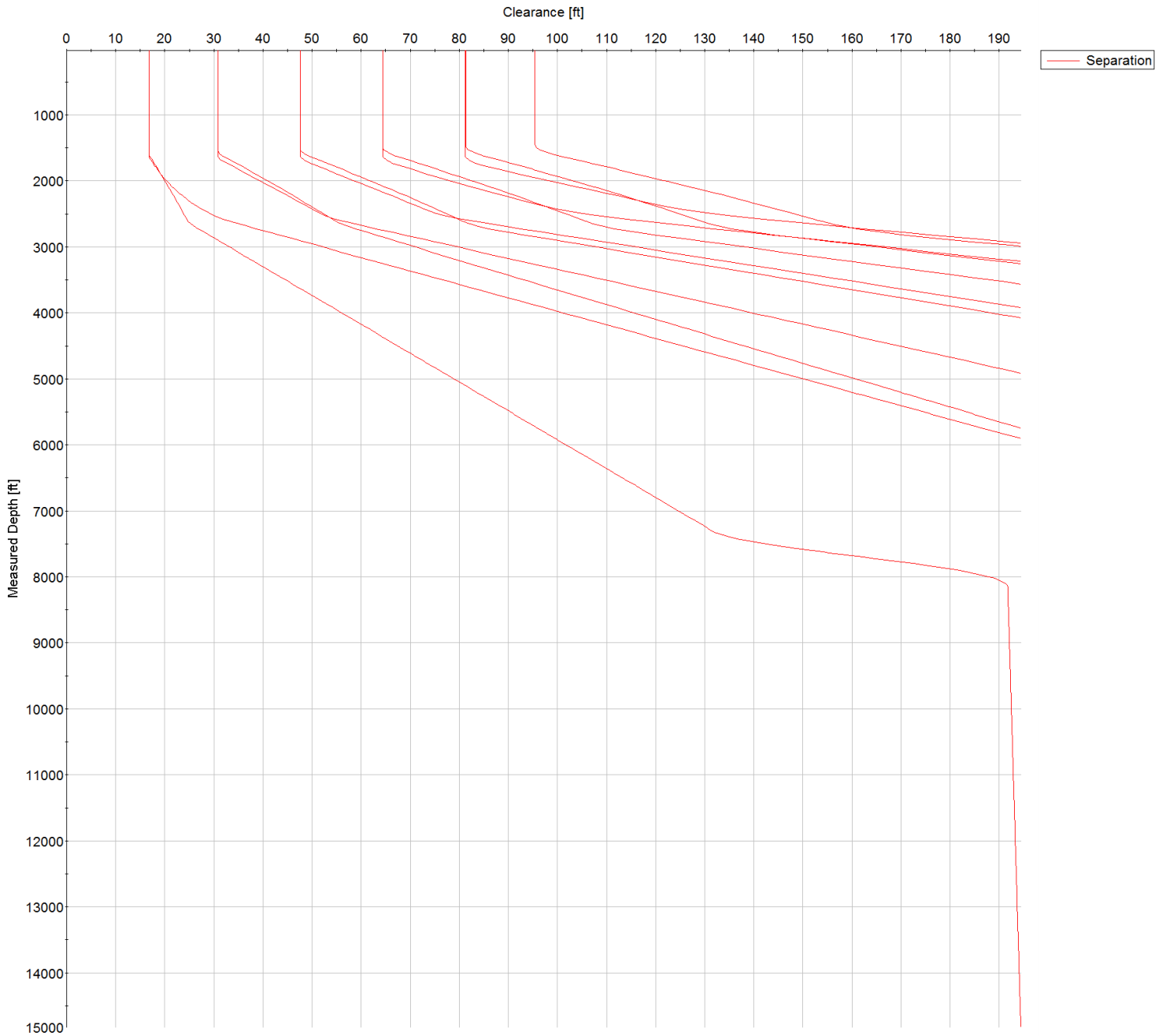


SYSDRILL
Closest Approach + Clearance Factor Summary Report
Wellbore: HOMESTEAD 7 (PWB)

Clearance Summary							
Offset WellName	Separation [ft]	MD[ft]	Diverging From[ft]	Ellipse Separation [ft]	Ellipse MD[ft]	Clearance Factor	Clearance MD[ft]
HOMESTEAD 24	484.63	1456.00	14824.29	475.38	1433.76	8.07	14824.29
WILLARD, JOHN W. GAS UNIT #1	1129.34	3442.53	3442.53	1095.95	3549.90	25.29	5600.43
UPRR 50 PAN AM M #1	2803.21	1625.00	9329.06	2786.30	1647.02	51.03	11292.69
VISTA USX #WW33-08D	2808.91	7749.38	7749.38	2745.92	7765.78	38.40	9455.41
BEN STEVENSON GAS UNIT #1	2940.27	14824.29	14824.29	2761.03	14824.29	16.40	14824.29
BERGMAN #1	3008.98	11023.99	11023.99	2900.15	11063.03	27.01	11555.15
BRIGHTON COMPANY #1	5348.34	13664.26	13664.26	5175.23	13753.31	29.05	14824.29
SHAW A #1	6513.71	14824.29	14824.29	6334.37	14824.29	36.32	14824.29

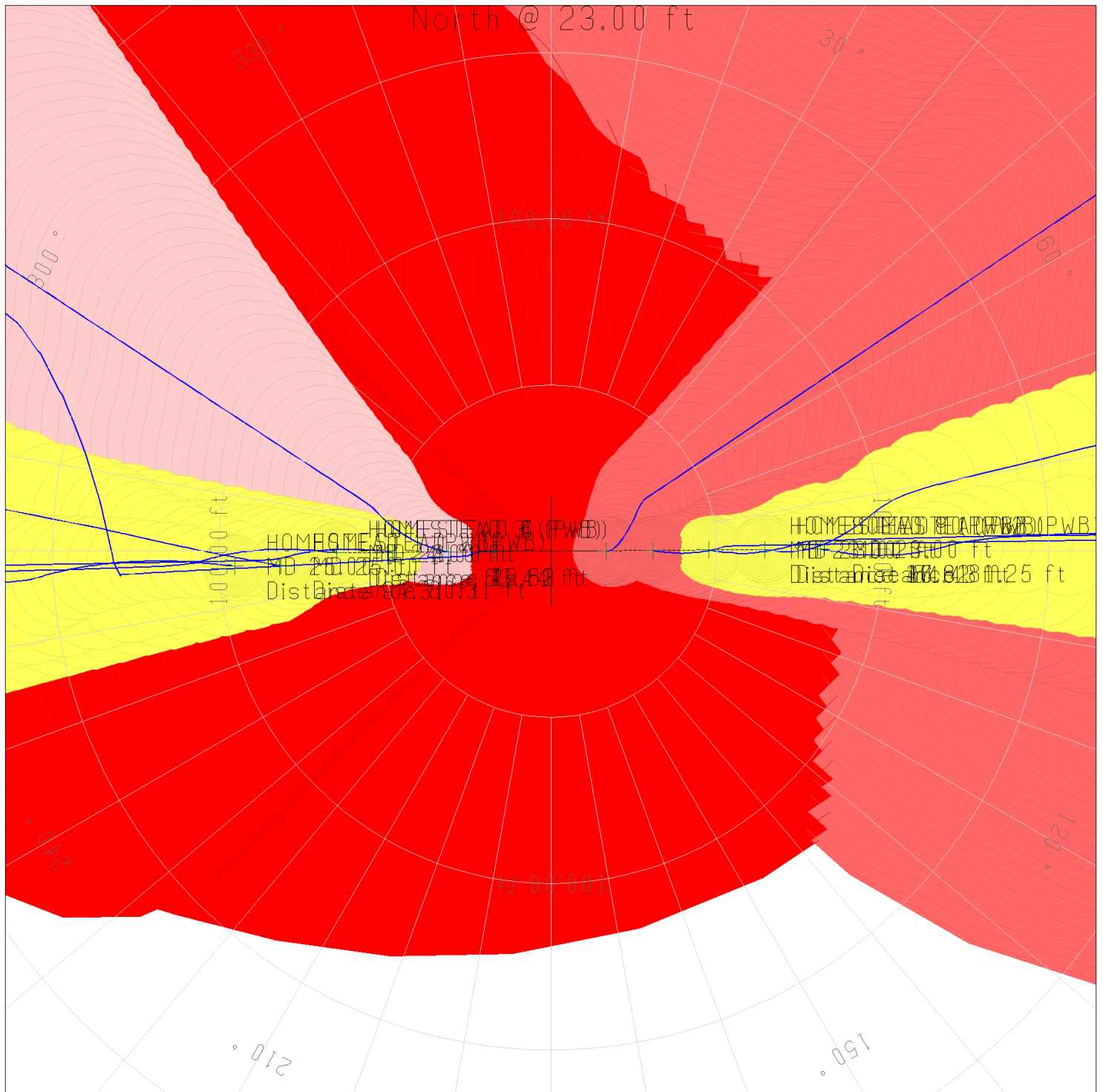


SYSDRILL
Closest Approach + Clearance Factor Summary Report
Wellbore: HOMESTEAD 7 (PWB)





SYSDRILL
Closest Approach + Clearance Factor Summary Report
Wellbore: HOMESTEAD 7 (PWB)



All data is in Feet unless otherwise stated
Coordinates are from Slot MD's are from Rig and TVD's are from Rig (Planned Datum #1 5160.0ft above Mean Sea Level)
Vertical Section is from 0.00N 0.00E on azimuth 194.490 degrees
Prepared by Integrated Petroleum Technologies, Inc.
Date Printed: 1-Oct-2015