

Petro Operating Company

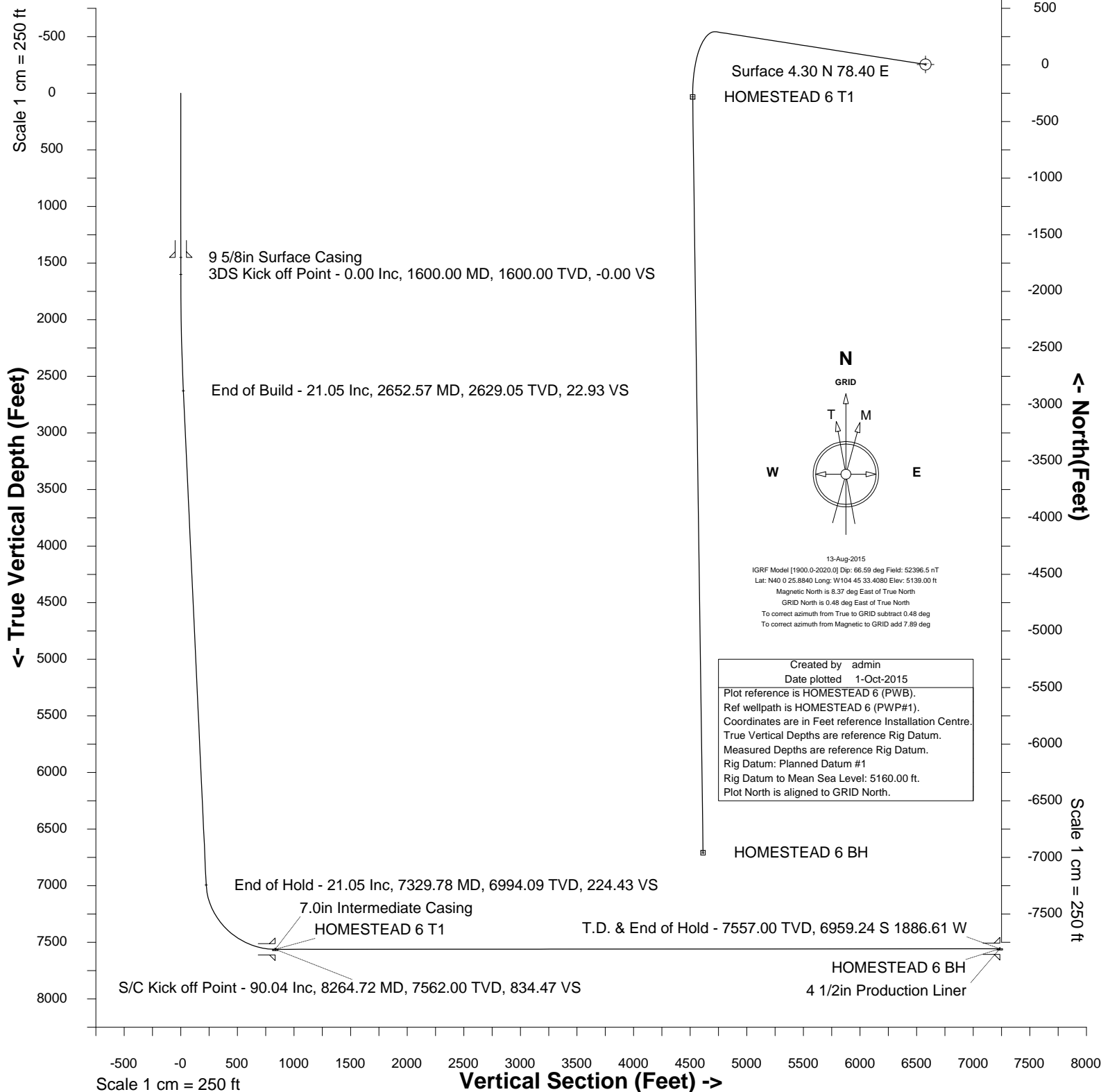
Location Weld County, CO
Field Wattenberg
Installation Homestead

Slot HOMESTEAD 6
Well HOMESTEAD 6
Wellbore HOMESTEAD 6 (PWB)



Scale 1 cm = 250 ft East (Feet) ->

-2500 -2000 -1500 -1000 -500 0 500



Azimuth 195.76 with reference 4.30 N, 78.40 E from Installation Centre



SYSDRILL
Well Design Combined Report
Wellbore: HOMESTEAD 6 (PWB)

Wellhead Details							
Name	Latitude	Longitude	Northing	Easting	North	East	Slot Elevation Above Ground
HOMESTEAD 6	40.00720000	-104.75900000	1246336.8714	3207569.4782	4.30N	78.40E	0.00

Declination		
Date	Source	Time
13-Aug-2015	IGRF Model [1900.0-2020.0]	08:38

Installation Details						
Name	Installation Position (Latitude)	Installation Position (Longitude)	Northing	Easting	Coord System Name	North Alignment
Homestead	40.00719000	-104.75928000	1246332.5735	3207491.0767	CO83-NF on NORTH AMERICAN DATUM 1983 datum	Grid

Summary Wellpath									
MD[ft]	Inc[deg]	Azi[deg]	TVD[ft]	North[ft]	East[ft]	Dogleg [deg/100ft]	Vertical Section[ft]	Northing	Easting
23.00	0.00	0.000	23.00	0.00N	0.00E		0.00	1246336.87	3207569.48
1600.00	0.00	278.870	1600.00	0.00N	0.00E	==>	0.00	1246336.87	3207569.48
2652.57	21.05	278.870	2629.05	29.48N	188.91W	2.00	22.93	1246366.35	3207380.57
7329.78	21.05	278.870	6994.09	288.54N	1848.90W	==>	224.43	1246625.40	3205720.64
8264.72	90.04	179.210	7562.00	286.68S	2056.68W	10.00	834.46	1246050.20	3205512.87
14942.20	90.04	179.210	7557.00	6963.53S	1965.01W	==>	7235.47	1239373.59	3205604.54

Interpolated Wellpath								
MD[ft]	Inc[deg]	Azi[deg]	TVD[ft]	North[ft]	East[ft]	Dogleg [deg/100ft]	Vertical Section[ft]	All Station Comments
0.00	0.00	0.000	0.00	0.00N	0.00E		0.00	Rig Datum
23.00	0.00	0.000	23.00	0.00N	0.00E	==>	0.00	Slot Datum
100.00	0.00	0.000	100.00	0.00N	0.00E	==>	0.00	
200.00	0.00	0.000	200.00	0.00N	0.00E	==>	0.00	
300.00	0.00	0.000	300.00	0.00N	0.00E	==>	0.00	
400.00	0.00	0.000	400.00	0.00N	0.00E	==>	0.00	
500.00	0.00	0.000	500.00	0.00N	0.00E	==>	0.00	
600.00	0.00	0.000	600.00	0.00N	0.00E	==>	0.00	
700.00	0.00	0.000	700.00	0.00N	0.00E	==>	0.00	
800.00	0.00	0.000	800.00	0.00N	0.00E	==>	0.00	
900.00	0.00	0.000	900.00	0.00N	0.00E	==>	0.00	
1000.00	0.00	0.000	1000.00	0.00N	0.00E	==>	0.00	
1100.00	0.00	0.000	1100.00	0.00N	0.00E	==>	0.00	
1200.00	0.00	0.000	1200.00	0.00N	0.00E	==>	0.00	
1300.00	0.00	0.000	1300.00	0.00N	0.00E	==>	0.00	
1400.00	0.00	0.000	1400.00	0.00N	0.00E	==>	0.00	9 5/8in Surface Casing 3DS Kick off Point
1450.00	0.00	0.000	1450.00	0.00N	0.00E	==>	0.00	
1500.00	0.00	0.000	1500.00	0.00N	0.00E	==>	0.00	
1600.00	0.00	278.870	1600.00	0.00N	0.00E	==>	0.00	
1700.00	2.00	278.870	1699.98	0.27N	1.72W	2.00	0.21	
1800.00	4.00	278.870	1799.84	1.08N	6.90W	2.00	0.84	
1900.00	6.00	278.870	1899.45	2.42N	15.51W	2.00	1.88	
2000.00	8.00	278.870	1998.70	4.30N	27.55W	2.00	3.34	
2100.00	10.00	278.870	2097.47	6.71N	43.00W	2.00	5.22	
2200.00	12.00	278.870	2195.62	9.65N	61.85W	2.00	7.51	
2300.00	14.00	278.870	2293.06	13.12N	84.08W	2.00	10.21	
2400.00	16.00	278.870	2389.64	17.11N	109.65W	2.00	13.31	
2500.00	18.00	278.870	2485.27	21.62N	138.54W	2.00	16.82	
2600.00	20.00	278.870	2579.82	26.64N	170.70W	2.00	20.72	
2652.57	21.05	278.870	2629.05	29.48N	188.91W	2.00	22.93	
2700.00	21.05	278.870	2673.31	32.11N	205.75W	==>	24.97	
2800.00	21.05	278.870	2766.64	37.65N	241.24W	==>	29.28	
2900.00	21.05	278.870	2859.96	43.19N	276.73W	==>	33.59	
3000.00	21.05	278.870	2953.29	48.73N	312.22W	==>	37.90	
3100.00	21.05	278.870	3046.62	54.26N	347.71W	==>	42.21	
3200.00	21.05	278.870	3139.94	59.80N	383.20W	==>	46.51	

All data is in Feet unless otherwise stated
Coordinates are from Slot MD's are from Rig and TVD's are from Rig (Planned Datum #1 5160.0ft above Mean Sea Level)
Vertical Section is from 0.00N 0.00E on azimuth 195.760 degrees
Bottom hole distance is 7235.47 Feet on azimuth 195.76 degrees from Wellhead
Calculation method uses Minimum Curvature method
Prepared by Integrated Petroleum Technologies, Inc.
Date Printed: 1-Oct-2015



SYSDRILL
Well Design Combined Report
Wellbore: HOMESTEAD 6 (PWB)

Interpolated Wellpath								All Station Comments
MD[ft]	Inc[deg]	Azi[deg]	TVD[ft]	North[ft]	East[ft]	Dogleg [deg/100ft]	Vertical Section[ft]	
3300.00	21.05	278.870	3233.27	65.34N	418.69W	==>	50.82	
3400.00	21.05	278.870	3326.59	70.88N	454.18W	==>	55.13	
3500.00	21.05	278.870	3419.92	76.42N	489.67W	==>	59.44	
3600.00	21.05	278.870	3513.24	81.96N	525.17W	==>	63.75	
3700.00	21.05	278.870	3606.57	87.50N	560.66W	==>	68.06	
3800.00	21.05	278.870	3699.90	93.04N	596.15W	==>	72.36	
3900.00	21.05	278.870	3793.22	98.57N	631.64W	==>	76.67	
4000.00	21.05	278.870	3886.55	104.11N	667.13W	==>	80.98	
4100.00	21.05	278.870	3979.87	109.65N	702.62W	==>	85.29	
4200.00	21.05	278.870	4073.20	115.19N	738.11W	==>	89.60	
4300.00	21.05	278.870	4166.53	120.73N	773.60W	==>	93.90	
4400.00	21.05	278.870	4259.85	126.27N	809.09W	==>	98.21	
4500.00	21.05	278.870	4353.18	131.81N	844.58W	==>	102.52	
4600.00	21.05	278.870	4446.50	137.35N	880.08W	==>	106.83	
4700.00	21.05	278.870	4539.83	142.88N	915.57W	==>	111.14	
4800.00	21.05	278.870	4633.15	148.42N	951.06W	==>	115.44	
4900.00	21.05	278.870	4726.48	153.96N	986.55W	==>	119.75	
5000.00	21.05	278.870	4819.81	159.50N	1022.04W	==>	124.06	
5100.00	21.05	278.870	4913.13	165.04N	1057.53W	==>	128.37	
5200.00	21.05	278.870	5006.46	170.58N	1093.02W	==>	132.68	
5300.00	21.05	278.870	5099.78	176.12N	1128.51W	==>	136.98	
5400.00	21.05	278.870	5193.11	181.66N	1164.00W	==>	141.29	
5500.00	21.05	278.870	5286.44	187.19N	1199.49W	==>	145.60	
5600.00	21.05	278.870	5379.76	192.73N	1234.99W	==>	149.91	
5700.00	21.05	278.870	5473.09	198.27N	1270.48W	==>	154.22	
5800.00	21.05	278.870	5566.41	203.81N	1305.97W	==>	158.52	
5900.00	21.05	278.870	5659.74	209.35N	1341.46W	==>	162.83	
6000.00	21.05	278.870	5753.06	214.89N	1376.95W	==>	167.14	
6100.00	21.05	278.870	5846.39	220.43N	1412.44W	==>	171.45	
6200.00	21.05	278.870	5939.72	225.97N	1447.93W	==>	175.76	
6300.00	21.05	278.870	6033.04	231.50N	1483.42W	==>	180.07	
6400.00	21.05	278.870	6126.37	237.04N	1518.91W	==>	184.37	
6500.00	21.05	278.870	6219.69	242.58N	1554.40W	==>	188.68	
6600.00	21.05	278.870	6313.02	248.12N	1589.90W	==>	192.99	
6700.00	21.05	278.870	6406.35	253.66N	1625.39W	==>	197.30	
6800.00	21.05	278.870	6499.67	259.20N	1660.88W	==>	201.61	
6900.00	21.05	278.870	6593.00	264.74N	1696.37W	==>	205.91	
7000.00	21.05	278.870	6686.32	270.28N	1731.86W	==>	210.22	
7100.00	21.05	278.870	6779.65	275.81N	1767.35W	==>	214.53	
7200.00	21.05	278.870	6872.97	281.35N	1802.84W	==>	218.84	End of Hold
7300.00	21.05	278.870	6966.30	286.89N	1838.33W	==>	223.15	
7329.78	21.05	278.870	6994.09	288.54N	1848.90W	==>	224.43	
7400.00	21.07	259.250	7059.70	288.13N	1873.80W	10.00	231.59	
7500.00	24.65	234.990	7152.04	272.77N	1908.63W	10.00	255.83	
7600.00	31.03	218.340	7240.55	240.51N	1941.78W	10.00	295.88	
7700.00	38.83	207.350	7322.55	192.33N	1972.26W	10.00	350.53	
7800.00	47.36	199.680	7395.56	129.69N	1999.12W	10.00	418.11	
7900.00	56.28	193.900	7457.34	54.49N	2021.55W	10.00	496.57	
8000.00	65.41	189.230	7506.03	30.97S	2038.88W	10.00	583.53	
8100.00	74.67	185.200	7540.14	124.11S	2050.57W	10.00	676.34	7.0in Intermediate Casing S/C Kick off Point/Target, HOMESTEAD 6 T1
8200.00	83.99	181.520	7558.63	222.09S	2056.28W	10.00	772.18	
8264.00	89.98	179.240	7562.00	285.96S	2056.69W	10.00	833.77	
8264.72	90.04	179.210	7562.00	286.68S	2056.68W	10.00	834.46	
8300.00	90.04	179.210	7561.97	321.96S	2056.20W	==>	868.28	
8400.00	90.04	179.210	7561.90	421.95S	2054.83W	==>	964.14	
8500.00	90.04	179.210	7561.82	521.94S	2053.45W	==>	1060.00	
8600.00	90.04	179.210	7561.75	621.93S	2052.08W	==>	1155.86	
8700.00	90.04	179.210	7561.67	721.92S	2050.71W	==>	1251.72	
8800.00	90.04	179.210	7561.60	821.91S	2049.34W	==>	1347.58	
8900.00	90.04	179.210	7561.52	921.90S	2047.96W	==>	1443.44	
9000.00	90.04	179.210	7561.45	1021.89S	2046.59W	==>	1539.30	
9100.00	90.04	179.210	7561.37	1121.88S	2045.22W	==>	1635.16	

All data is in Feet unless otherwise stated
Coordinates are from Slot MD's are from Rig and TVD's are from Rig (Planned Datum #1 5160.0ft above Mean Sea Level)
Vertical Section is from 0.00N 0.00E on azimuth 195.760 degrees
Bottom hole distance is 7235.47 Feet on azimuth 195.76 degrees from Wellhead
Calculation method uses Minimum Curvature method
Prepared by Integrated Petroleum Technologies, Inc.
Date Printed: 1-Oct-2015



SYSDRILL
Well Design Combined Report
Wellbore: HOMESTEAD 6 (PWB)

Interpolated Wellpath								
MD[ft]	Inc[deg]	Azi[deg]	TVD[ft]	North[ft]	East[ft]	Dogleg [deg/100ft]	Vertical Section[ft]	All Station Comments
9200.00	90.04	179.210	7561.30	1221.87S	2043.84W	==>	1731.02	
9300.00	90.04	179.210	7561.22	1321.86S	2042.47W	==>	1826.88	
9400.00	90.04	179.210	7561.15	1421.86S	2041.10W	==>	1922.74	
9500.00	90.04	179.210	7561.08	1521.85S	2039.73W	==>	2018.60	
9600.00	90.04	179.210	7561.00	1621.84S	2038.35W	==>	2114.46	
9700.00	90.04	179.210	7560.93	1721.83S	2036.98W	==>	2210.32	
9800.00	90.04	179.210	7560.85	1821.82S	2035.61W	==>	2306.18	
9900.00	90.04	179.210	7560.78	1921.81S	2034.23W	==>	2402.04	
10000.00	90.04	179.210	7560.70	2021.80S	2032.86W	==>	2497.90	
10100.00	90.04	179.210	7560.63	2121.79S	2031.49W	==>	2593.76	
10200.00	90.04	179.210	7560.55	2221.78S	2030.12W	==>	2689.62	
10300.00	90.04	179.210	7560.48	2321.77S	2028.74W	==>	2785.48	
10400.00	90.04	179.210	7560.40	2421.76S	2027.37W	==>	2881.33	
10500.00	90.04	179.210	7560.33	2521.75S	2026.00W	==>	2977.19	
10600.00	90.04	179.210	7560.25	2621.74S	2024.62W	==>	3073.05	
10700.00	90.04	179.210	7560.18	2721.73S	2023.25W	==>	3168.91	
10800.00	90.04	179.210	7560.10	2821.72S	2021.88W	==>	3264.77	
10900.00	90.04	179.210	7560.03	2921.71S	2020.51W	==>	3360.63	
11000.00	90.04	179.210	7559.95	3021.70S	2019.13W	==>	3456.49	
11100.00	90.04	179.210	7559.88	3121.69S	2017.76W	==>	3552.35	
11200.00	90.04	179.210	7559.80	3221.69S	2016.39W	==>	3648.21	
11300.00	90.04	179.210	7559.73	3321.68S	2015.02W	==>	3744.07	
11400.00	90.04	179.210	7559.65	3421.67S	2013.64W	==>	3839.93	
11500.00	90.04	179.210	7559.58	3521.66S	2012.27W	==>	3935.79	
11600.00	90.04	179.210	7559.50	3621.65S	2010.90W	==>	4031.65	
11700.00	90.04	179.210	7559.43	3721.64S	2009.52W	==>	4127.51	
11800.00	90.04	179.210	7559.35	3821.63S	2008.15W	==>	4223.37	
11900.00	90.04	179.210	7559.28	3921.62S	2006.78W	==>	4319.23	
12000.00	90.04	179.210	7559.20	4021.61S	2005.41W	==>	4415.09	
12100.00	90.04	179.210	7559.13	4121.60S	2004.03W	==>	4510.95	
12200.00	90.04	179.210	7559.05	4221.59S	2002.66W	==>	4606.81	
12300.00	90.04	179.210	7558.98	4321.58S	2001.29W	==>	4702.67	
12400.00	90.04	179.210	7558.90	4421.57S	1999.91W	==>	4798.53	
12500.00	90.04	179.210	7558.83	4521.56S	1998.54W	==>	4894.39	
12600.00	90.04	179.210	7558.75	4621.55S	1997.17W	==>	4990.25	
12700.00	90.04	179.210	7558.68	4721.54S	1995.80W	==>	5086.11	
12800.00	90.04	179.210	7558.60	4821.53S	1994.42W	==>	5181.97	
12900.00	90.04	179.210	7558.53	4921.52S	1993.05W	==>	5277.83	
13000.00	90.04	179.210	7558.45	5021.51S	1991.68W	==>	5373.69	
13100.00	90.04	179.210	7558.38	5121.51S	1990.30W	==>	5469.55	
13200.00	90.04	179.210	7558.30	5221.50S	1988.93W	==>	5565.40	
13300.00	90.04	179.210	7558.23	5321.49S	1987.56W	==>	5661.26	
13400.00	90.04	179.210	7558.15	5421.48S	1986.19W	==>	5757.12	
13500.00	90.04	179.210	7558.08	5521.47S	1984.81W	==>	5852.98	
13600.00	90.04	179.210	7558.01	5621.46S	1983.44W	==>	5948.84	
13700.00	90.04	179.210	7557.93	5721.45S	1982.07W	==>	6044.70	
13800.00	90.04	179.210	7557.86	5821.44S	1980.69W	==>	6140.56	
13900.00	90.04	179.210	7557.78	5921.43S	1979.32W	==>	6236.42	
14000.00	90.04	179.210	7557.71	6021.42S	1977.95W	==>	6332.28	
14100.00	90.04	179.210	7557.63	6121.41S	1976.58W	==>	6428.14	
14200.00	90.04	179.210	7557.56	6221.40S	1975.20W	==>	6524.00	
14300.00	90.04	179.210	7557.48	6321.39S	1973.83W	==>	6619.86	
14400.00	90.04	179.210	7557.41	6421.38S	1972.46W	==>	6715.72	
14500.00	90.04	179.210	7557.33	6521.37S	1971.08W	==>	6811.58	
14600.00	90.04	179.210	7557.26	6621.36S	1969.71W	==>	6907.44	
14700.00	90.04	179.210	7557.18	6721.35S	1968.34W	==>	7003.30	
14800.00	90.04	179.210	7557.11	6821.34S	1966.97W	==>	7099.16	
14900.00	90.04	179.210	7557.03	6921.34S	1965.59W	==>	7195.02	End of Hold/Target, 4 1/2in Production Liner, HOMESTEAD 6 BH
14942.20	90.04	179.210	7557.00	6963.53S	1965.01W	==>	7235.47	

All data is in Feet unless otherwise stated
Coordinates are from Slot MD's are from Rig and TVD's are from Rig (Planned Datum #1 5160.0ft above Mean Sea Level)
Vertical Section is from 0.00N 0.00E on azimuth 195.760 degrees
Bottom hole distance is 7235.47 Feet on azimuth 195.76 degrees from Wellhead
Calculation method uses Minimum Curvature method
Prepared by Integrated Petroleum Technologies, Inc.
Date Printed: 1-Oct-2015



SYSDRILL
Well Design Combined Report
Wellbore: HOMESTEAD 6 (PWB)

Hole Sections

Diameter [in]	Start MD[ft]	Start TVD[ft]	Start North[ft]	Start East[ft]	End MD[ft]	End TVD[ft]	End North[ft]	End East[ft]
13 1/2	23.00	23.00	0.00N	0.00E	1450.00	1450.00	0.00N	0.00E
8 3/4	1450.00	1450.00	0.00N	0.00E	8264.00	7562.00	285.96S	2056.69W
6 1/8	8264.00	7562.00	285.96S	2056.69W	14942.20	7557.00	6963.53S	1965.01W

Casings

Name	Top MD[ft]	Top TVD[ft]	Top North[ft]	Top East[ft]	Shoe MD[ft]	Shoe TVD[ft]	Shoe North[ft]	Shoe East[ft]
9 5/8in Surface Casing	23.00	23.00	0.00N	0.00E	1450.00	1450.00	0.00N	0.00E
7.0in Intermediate Casing	23.00	23.00	0.00N	0.00E	8264.00	7562.00	285.96S	2056.69W
4 1/2in Production Liner	7369.00	7030.74	289.37N	1862.82W	14942.20	7557.00	6963.53S	1965.01W

Targets

Name	North[ft]	East[ft]	TVD[ft]	Latitude	Longitude	Northing	Easting
HOMESTEAD 6 BH	6963.53S	1965.01W	7557.00	39.98813000	-104.76622000	1239373.59	3205604.54
HOMESTEAD 6 T1	286.68S	2056.68W	7562.00	40.00646000	-104.76635000	1246050.20	3205512.87

Survey Tool Program

Reference	Survey Name	MD[ft]	TVD[ft]	Survey Tool	Error Model
400499	Planned	14942.20	7557.00	ISCWSA MWD	Rev 3 + Fixed Rig + Rotating

Notes

All data is in Feet unless otherwise stated
Coordinates are from Slot MD's are from Rig and TVD's are from Rig (Planned Datum #1 5160.0ft above Mean Sea Level)
Vertical Section is from 0.00N 0.00E on azimuth 195.760 degrees
Bottom hole distance is 7235.47 Feet on azimuth 195.76 degrees from Wellhead
Calculation method uses Minimum Curvature method
Prepared by Integrated Petroleum Technologies, Inc.
Date Printed: 1-Oct-2015



SYSDRILL
Closest Approach + Clearance Factor Summary Report
Wellbore: HOMESTEAD 6 (PWB)

Ellipse separations are reported ONLY if BOTH wells have uncertainty data
Only Depth and Magnetic Reference Field error terms are correlated across tie points
Scan limit is calculated on CENTRE to CENTRE distance
Summary data uses Closest Approach clearance calculation for all minima
Hole size/Casings ARE included
Hole size/Casings are NOT subtracted from Centre-Centre distance
Confidence limit of 95.00% / 2.80 SD.

Wellbore		
Name	Created	Last Revised
HOMESTEAD 6 (PWB)	17-Aug-2015	23-Sep-2015

Well		
Name	Government ID	Last Revised
HOMESTEAD 6		17-Aug-2015

Slot						
Name	Latitude	Longitude	Grid Northing	Grid Easting	North	East
HOMESTEAD 6	40.00720000	-104.75900000	1246336.8714	3207569.4782	4.30N	78.40E

Installation						
Name	Installation Position (Latitude)	Installation Position (Longitude)	Easting	Northing	Coord System Name	North Alignment
Homestead	40.00719000	-104.75928000	3207491.0767	1246332.5735	CO83-NF on NORTH AMERICAN DATUM 1983 datum	Grid

Clearance Summary								
Offset WellName	Separation [ft]	MD[ft]	Diverging From[ft]	Ellipse Separation [ft]	Ellipse MD[ft]	Clearance Factor	Clearance MD[ft]	
HOMESTEAD 5	14.01	1549.00	1549.00	-31.52	14942.20	0.89	14942.20	
HOMESTEAD 7	16.81	1600.00	1600.00	-135.12	14942.20	0.59	14942.20	
HOMESTEAD 4	30.81	1524.00	14942.20	15.72	14942.20	1.04	14942.20	
HOMESTEAD 8	33.62	1600.00	7339.27	23.63	1614.21	1.19	14942.20	
HOMESTEAD 9	47.62	1600.00	8264.72	37.64	1614.21	1.54	14942.20	
HOMESTEAD 3	47.62	1499.38	1499.38	38.24	1523.00	1.54	14942.20	
HOMESTEAD 10	64.43	1600.00	8264.72	54.45	1614.21	2.08	14942.20	
HOMESTEAD 2	64.53	1473.00	14942.20	55.26	1433.76	2.17	14942.20	
HOMESTEAD 1	78.52	1448.00	14942.20	69.16	1448.00	2.56	14942.20	
HOMESTEAD 11	81.24	1600.00	1600.00	71.26	1614.21	2.63	14942.20	
HOMESTEAD 12	98.05	1600.00	8290.72	88.07	1614.21	3.09	14942.20	
BERGMAN #2	124.08	14059.94	14059.94	-59.77	14081.40	0.68	14081.40	
HOMESTEAD 13	296.72	2139.14	14942.20	283.40	2155.55	3.63	14942.20	
HOMESTEAD 14	323.77	2040.72	14942.20	311.03	2073.52	4.09	14942.20	
HOMESTEAD 15	344.12	1991.50	14942.20	331.69	2024.31	4.52	14942.20	
HOMESTEAD 16	367.07	1925.89	14942.20	355.05	1958.70	4.98	14942.20	
HOMESTEAD 17	388.00	1761.85	14942.20	376.79	1860.27	5.44	14942.20	
HOMESTEAD 18	405.79	1696.23	14942.20	394.89	1794.65	5.87	14942.20	
HOMESTEAD 19	423.00	1600.00	14942.20	412.96	1647.02	6.33	14942.20	
HOMESTEAD 20	439.71	1614.21	14942.20	429.66	1630.61	6.79	14942.20	
HOMESTEAD 21	453.82	1532.19	14942.20	444.01	1614.21	7.23	14942.20	
HOMESTEAD 22	470.63	1506.00	14942.20	461.17	1532.19	7.69	14942.20	
HOMESTEAD 23	487.44	1482.97	14942.20	478.13	1515.78	8.14	14942.20	

All data is in Feet unless otherwise stated
Coordinates are from Slot MD's are from Rig and TVD's are from Rig (Planned Datum #1 5160.0ft above Mean Sea Level)
Vertical Section is from 0.00N 0.00E on azimuth 195.760 degrees
Prepared by Integrated Petroleum Technologies, Inc.
Date Printed: 1-Oct-2015

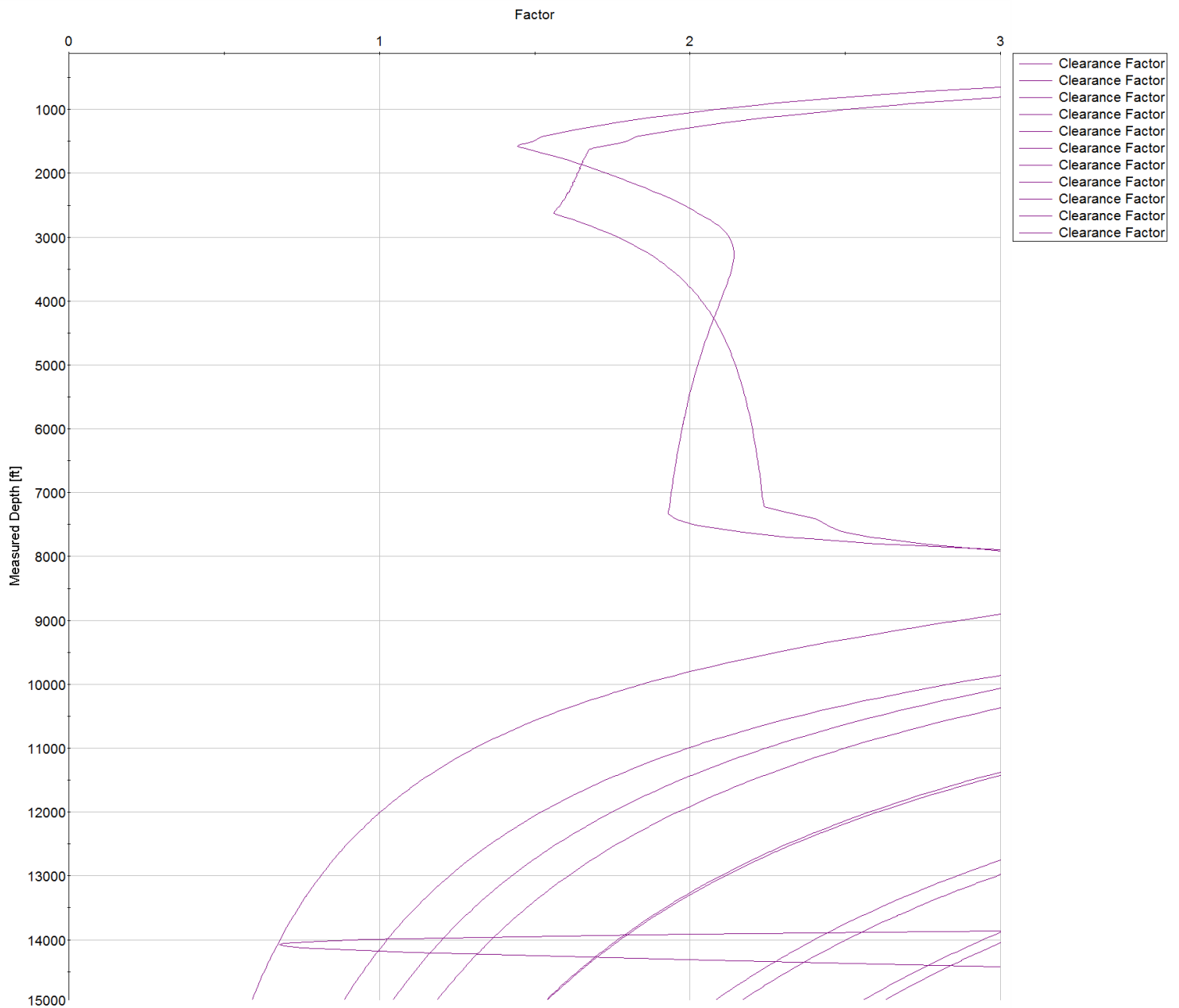


SYSDRILL
Closest Approach + Clearance Factor Summary Report
Wellbore: HOMESTEAD 6 (PWB)

Clearance Summary							
Offset WellName	Separation [ft]	MD[ft]	Diverging From[ft]	Ellipse Separation [ft]	Ellipse MD[ft]	Clearance Factor	Clearance MD[ft]
HOMESTEAD 24	501.44	1456.00	14942.20	492.19	1433.76	8.58	14942.20
WILLARD, JOHN W. GAS UNIT #1	1138.27	3287.44	3287.44	1106.22	3385.86	26.13	5387.17
VISTA USX #WW33-08D	2638.88	7864.21	7864.21	2574.30	7880.61	35.57	9373.39
UPRR 50 PAN AM M #1	2817.69	1600.00	9446.13	2800.95	1623.00	52.49	11555.15
BEN STEVENSON GAS UNIT #1	3069.48	14942.20	14942.20	2883.58	14942.20	16.51	14942.20
BERGMAN #1	3189.49	11145.05	11145.05	3080.20	11177.86	28.46	11702.79
BRIGHTON COMPANY #1	5529.98	13786.12	13786.12	5356.61	13868.14	29.98	14942.20
SHAW A #1	6645.22	14942.20	14942.20	6461.30	14942.20	36.13	14942.20

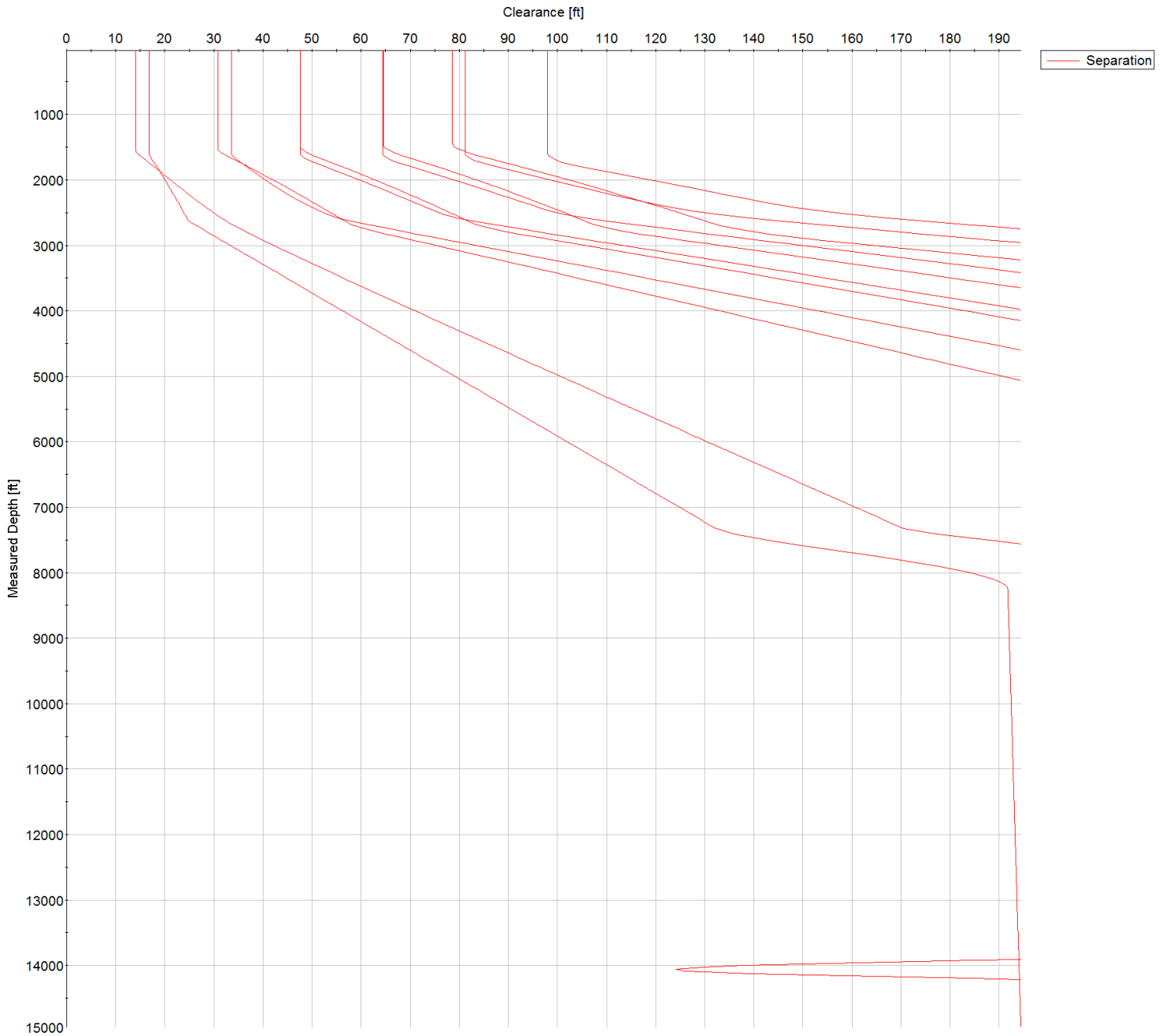


SYSDRILL
Closest Approach + Clearance Factor Summary Report
Wellbore: HOMESTEAD 6 (PWB)



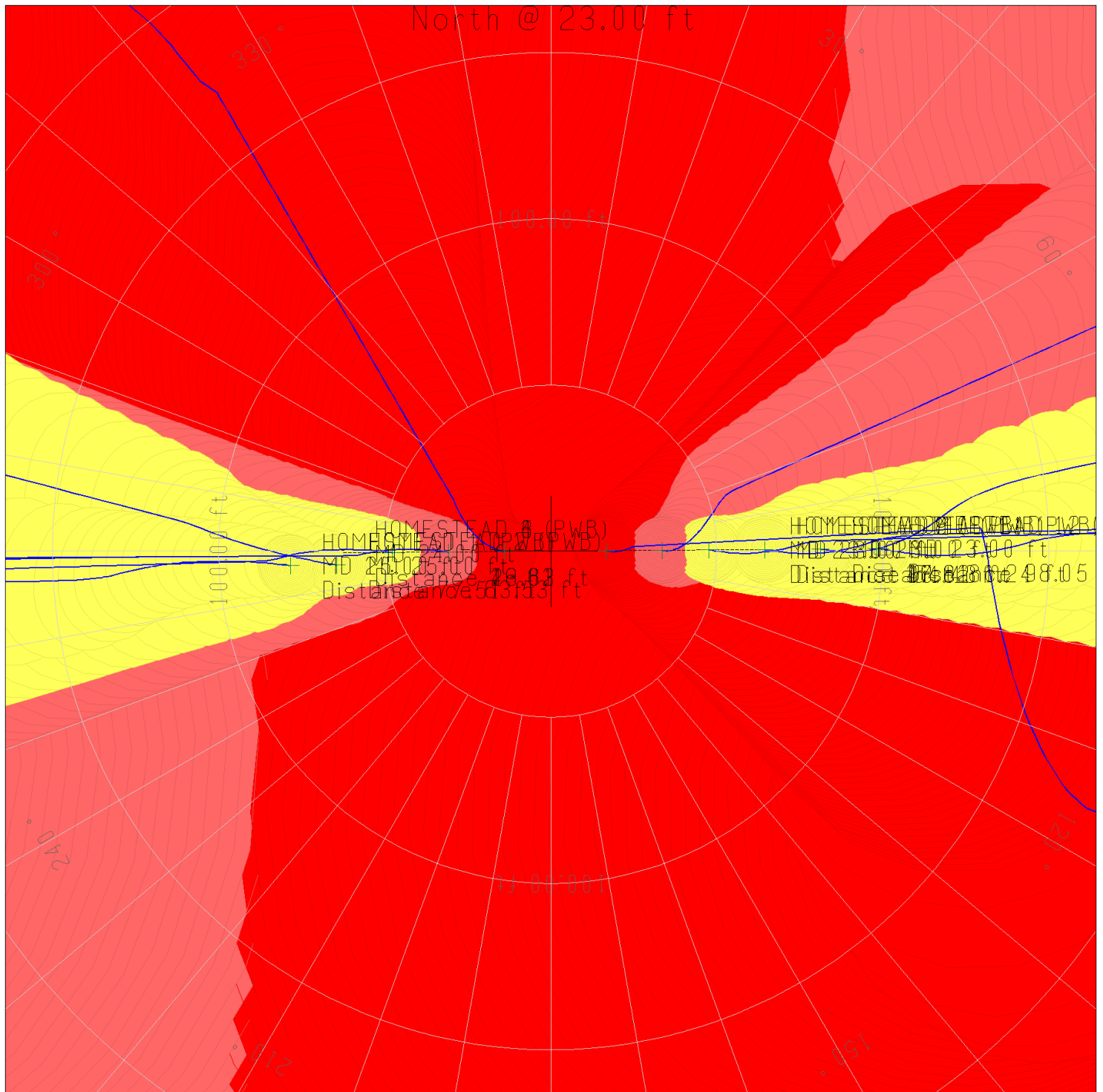


SYSDRILL
Closest Approach + Clearance Factor Summary Report
Wellbore: HOMESTEAD 6 (PWB)





SYSDRILL
Closest Approach + Clearance Factor Summary Report
Wellbore: HOMESTEAD 6 (PWB)



All data is in Feet unless otherwise stated
Coordinates are from Slot MD's are from Rig and TVD's are from Rig (Planned Datum #1 5160.0ft above Mean Sea Level)
Vertical Section is from 0.00N 0.00E on azimuth 195.760 degrees
Prepared by Integrated Petroleum Technologies, Inc.
Date Printed: 1-Oct-2015