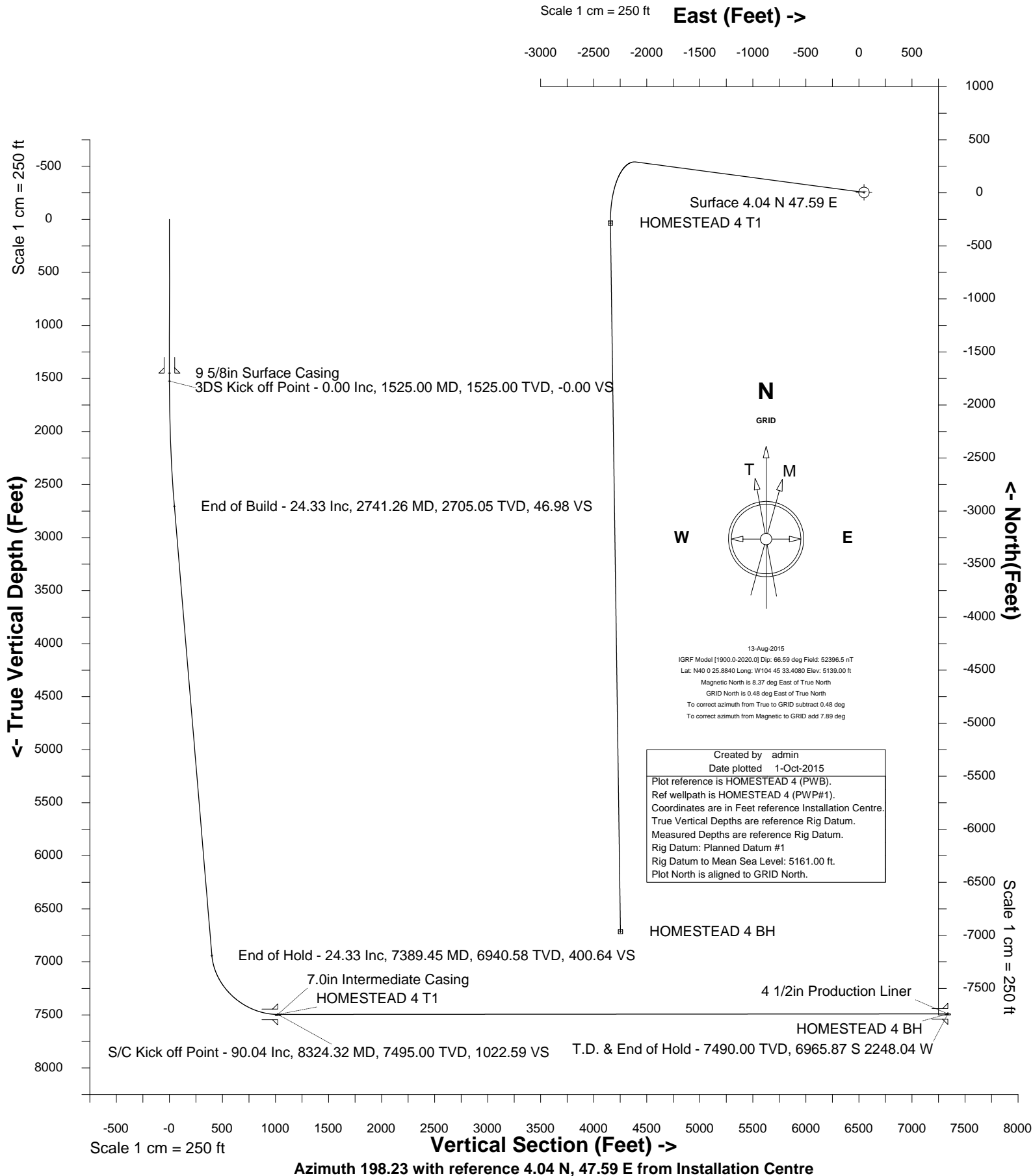


Wellbore HOMESTEAD 4 (PWB)





SYSDRILL
Well Design Combined Report
Wellbore: HOMESTEAD 4 (PWB)

Wellhead Details							
Name	Latitude	Longitude	Northing	Easting	North	East	Slot Elevation Above Ground
HOMESTEAD 4	40.00720000	-104.75911000	1246336.6140	3207538.6657	4.04N	47.59E	0.00

Declination		
Date	Source	Time
13-Aug-2015	IGRF Model [1900.0-2020.0]	08:38

Installation Details						
Name	Installation Position (Latitude)	Installation Position (Longitude)	Northing	Easting	Coord System Name	North Alignment
Homestead	40.00719000	-104.75928000	1246332.5735	3207491.0767	CO83-NF on NORTH AMERICAN DATUM 1983 datum	Grid

Summary Wellpath									
MD[ft]	Inc[deg]	Azi[deg]	TVD[ft]	North[ft]	East[ft]	Dogleg [deg/100ft]	Vertical Section[ft]	Northing	Easting
23.00	0.00	0.000	23.00	0.00N	0.00E		0.00	1246336.61	3207538.67
1525.00	0.00	277.590	1525.00	0.00N	0.00E	==>	0.00	1246336.61	3207538.67
2741.26	24.33	277.590	2705.05	33.57N	252.10W	2.00	46.98	1246370.19	3207286.57
7389.45	24.33	277.590	6940.58	286.32N	2150.01W	==>	400.64	1246622.93	3205388.74
8324.32	90.04	179.190	7495.00	289.44S	2390.04W	10.00	1022.59	1246047.19	3205148.72
15005.46	90.04	179.190	7490.00	6969.91S	2295.63W	==>	7338.22	1239366.96	3205243.12

Interpolated Wellpath								
MD[ft]	Inc[deg]	Azi[deg]	TVD[ft]	North[ft]	East[ft]	Dogleg [deg/100ft]	Vertical Section[ft]	All Station Comments
0.00	0.00	0.000	0.00	0.00N	0.00E		0.00	Rig Datum
23.00	0.00	0.000	23.00	0.00N	0.00E	==>	0.00	Slot Datum
100.00	0.00	0.000	100.00	0.00N	0.00E	==>	0.00	
200.00	0.00	0.000	200.00	0.00N	0.00E	==>	0.00	
300.00	0.00	0.000	300.00	0.00N	0.00E	==>	0.00	
400.00	0.00	0.000	400.00	0.00N	0.00E	==>	0.00	
500.00	0.00	0.000	500.00	0.00N	0.00E	==>	0.00	
600.00	0.00	0.000	600.00	0.00N	0.00E	==>	0.00	
700.00	0.00	0.000	700.00	0.00N	0.00E	==>	0.00	
800.00	0.00	0.000	800.00	0.00N	0.00E	==>	0.00	
900.00	0.00	0.000	900.00	0.00N	0.00E	==>	0.00	
1000.00	0.00	0.000	1000.00	0.00N	0.00E	==>	0.00	
1100.00	0.00	0.000	1100.00	0.00N	0.00E	==>	0.00	
1200.00	0.00	0.000	1200.00	0.00N	0.00E	==>	0.00	
1300.00	0.00	0.000	1300.00	0.00N	0.00E	==>	0.00	
1400.00	0.00	0.000	1400.00	0.00N	0.00E	==>	0.00	9 5/8in Surface Casing 3DS Kick off Point
1450.00	0.00	0.000	1450.00	0.00N	0.00E	==>	0.00	
1500.00	0.00	0.000	1500.00	0.00N	0.00E	==>	0.00	
1525.00	0.00	277.590	1525.00	0.00N	0.00E	==>	0.00	
1600.00	1.50	277.590	1599.99	0.13N	0.97W	2.00	0.18	
1700.00	3.50	277.590	1699.89	0.71N	5.30W	2.00	0.99	
1800.00	5.50	277.590	1799.58	1.74N	13.07W	2.00	2.44	
1900.00	7.50	277.590	1898.93	3.24N	24.29W	2.00	4.53	
2000.00	9.50	277.590	1997.83	5.19N	38.95W	2.00	7.26	
2100.00	11.50	277.590	2096.15	7.59N	57.01W	2.00	10.62	
2200.00	13.50	277.590	2193.77	10.45N	78.46W	2.00	14.62	
2300.00	15.50	277.590	2290.58	13.75N	103.28W	2.00	19.25	
2400.00	17.50	277.590	2386.46	17.50N	131.43W	2.00	24.49	
2500.00	19.50	277.590	2481.29	21.69N	162.88W	2.00	30.35	
2600.00	21.50	277.590	2574.95	26.31N	197.59W	2.00	36.82	
2700.00	23.50	277.590	2667.33	31.37N	235.53W	2.00	43.89	End of Build
2741.26	24.33	277.590	2705.05	33.57N	252.10W	2.00	46.98	
2800.00	24.33	277.590	2758.58	36.77N	276.09W	==>	51.45	
2900.00	24.33	277.590	2849.70	42.21N	316.92W	==>	59.06	
3000.00	24.33	277.590	2940.82	47.64N	357.75W	==>	66.66	
3100.00	24.33	277.590	3031.94	53.08N	398.58W	==>	74.27	

All data is in Feet unless otherwise stated
Coordinates are from Slot MD's are from Rig (Planned Datum #1 5161.0ft above Mean Sea Level)
Vertical Section is from 0.00N 0.00E on azimuth 198.230 degrees
Bottom hole distance is 7338.22 Feet on azimuth 198.23 degrees from Wellhead
Calculation method uses Minimum Curvature method
Prepared by Integrated Petroleum Technologies, Inc.
Date Printed: 1-Oct-2015



SYSDRILL
Well Design Combined Report
Wellbore: HOMESTEAD 4 (PWB)

Interpolated Wellpath								
MD[ft]	Inc[deg]	Azi[deg]	TVD[ft]	North[ft]	East[ft]	Dogleg [deg/100ft]	Vertical Section[ft]	All Station Comments
3200.00	24.33	277.590	3123.06	58.52N	439.41W	==>	81.88	
3300.00	24.33	277.590	3214.19	63.96N	480.24W	==>	89.49	
3400.00	24.33	277.590	3305.31	69.39N	521.07W	==>	97.10	
3500.00	24.33	277.590	3396.43	74.83N	561.91W	==>	104.71	
3600.00	24.33	277.590	3487.55	80.27N	602.74W	==>	112.32	
3700.00	24.33	277.590	3578.68	85.71N	643.57W	==>	119.92	
3800.00	24.33	277.590	3669.80	91.14N	684.40W	==>	127.53	
3900.00	24.33	277.590	3760.92	96.58N	725.23W	==>	135.14	
4000.00	24.33	277.590	3852.04	102.02N	766.06W	==>	142.75	
4100.00	24.33	277.590	3943.16	107.46N	806.89W	==>	150.36	
4200.00	24.33	277.590	4034.29	112.89N	847.72W	==>	157.97	
4300.00	24.33	277.590	4125.41	118.33N	888.55W	==>	165.58	
4400.00	24.33	277.590	4216.53	123.77N	929.38W	==>	173.18	
4500.00	24.33	277.590	4307.65	129.21N	970.22W	==>	180.79	
4600.00	24.33	277.590	4398.78	134.65N	1011.05W	==>	188.40	
4700.00	24.33	277.590	4489.90	140.08N	1051.88W	==>	196.01	
4800.00	24.33	277.590	4581.02	145.52N	1092.71W	==>	203.62	
4900.00	24.33	277.590	4672.14	150.96N	1133.54W	==>	211.23	
5000.00	24.33	277.590	4763.26	156.40N	1174.37W	==>	218.83	
5100.00	24.33	277.590	4854.39	161.83N	1215.20W	==>	226.44	
5200.00	24.33	277.590	4945.51	167.27N	1256.03W	==>	234.05	
5300.00	24.33	277.590	5036.63	172.71N	1296.86W	==>	241.66	
5400.00	24.33	277.590	5127.75	178.15N	1337.70W	==>	249.27	
5500.00	24.33	277.590	5218.88	183.58N	1378.53W	==>	256.88	
5600.00	24.33	277.590	5310.00	189.02N	1419.36W	==>	264.49	
5700.00	24.33	277.590	5401.12	194.46N	1460.19W	==>	272.09	
5800.00	24.33	277.590	5492.24	199.90N	1501.02W	==>	279.70	
5900.00	24.33	277.590	5583.36	205.33N	1541.85W	==>	287.31	
6000.00	24.33	277.590	5674.49	210.77N	1582.68W	==>	294.92	
6100.00	24.33	277.590	5765.61	216.21N	1623.51W	==>	302.53	
6200.00	24.33	277.590	5856.73	221.65N	1664.34W	==>	310.14	
6300.00	24.33	277.590	5947.85	227.08N	1705.17W	==>	317.75	
6400.00	24.33	277.590	6038.98	232.52N	1746.01W	==>	325.35	
6500.00	24.33	277.590	6130.10	237.96N	1786.84W	==>	332.96	
6600.00	24.33	277.590	6221.22	243.40N	1827.67W	==>	340.57	
6700.00	24.33	277.590	6312.34	248.84N	1868.50W	==>	348.18	
6800.00	24.33	277.590	6403.46	254.27N	1909.33W	==>	355.79	
6900.00	24.33	277.590	6494.59	259.71N	1950.16W	==>	363.40	
7000.00	24.33	277.590	6585.71	265.15N	1990.99W	==>	371.01	
7100.00	24.33	277.590	6676.83	270.59N	2031.82W	==>	378.61	
7200.00	24.33	277.590	6767.95	276.02N	2072.65W	==>	386.22	
7300.00	24.33	277.590	6859.08	281.46N	2113.48W	==>	393.83	
7389.45	24.33	277.590	6940.58	286.32N	2150.01W	==>	400.64	
7400.00	24.21	275.030	6950.20	286.80N	2154.32W	10.00	401.53	End of Hold
7500.00	25.20	251.080	7041.28	281.68N	2194.98W	10.00	419.12	
7600.00	29.53	231.340	7130.25	259.32N	2234.47W	10.00	452.70	
7700.00	36.01	217.180	7214.41	220.40N	2271.57W	10.00	501.28	
7800.00	43.69	207.130	7291.20	166.10N	2305.17W	10.00	563.36	
7900.00	52.02	199.640	7358.30	98.07N	2334.24W	10.00	637.07	
8000.00	60.73	193.730	7413.65	18.38N	2357.90W	10.00	720.17	
8100.00	69.66	188.750	7455.59	70.55S	2375.43W	10.00	810.12	
8200.00	78.71	184.330	7482.83	166.02S	2386.30W	10.00	904.19	
8300.00	87.82	180.180	7494.55	265.12S	2390.17W	10.00	999.54	
8324.00	90.01	179.200	7495.00	289.12S	2390.04W	10.00	1022.29	7.0in Intermediate Casing
8324.32	90.04	179.190	7495.00	289.44S	2390.04W	10.00	1022.59	S/C Kick off Point/Target, HOMESTEAD 4 T1
8400.00	90.04	179.190	7494.94	365.11S	2388.97W	==>	1094.13	
8500.00	90.04	179.190	7494.87	465.10S	2387.55W	==>	1188.66	
8600.00	90.04	179.190	7494.79	565.09S	2386.14W	==>	1283.19	
8700.00	90.04	179.190	7494.72	665.08S	2384.73W	==>	1377.72	
8800.00	90.04	179.190	7494.64	765.07S	2383.32W	==>	1472.25	
8900.00	90.04	179.190	7494.57	865.06S	2381.90W	==>	1566.78	
9000.00	90.04	179.190	7494.49	965.05S	2380.49W	==>	1661.31	

All data is in Feet unless otherwise stated
Coordinates are from Slot MD's are from Rig and TVD's are from Rig (Planned Datum #1 5161.0ft above Mean Sea Level)
Vertical Section is from 0.00N 0.00E on azimuth 198.230 degrees
Bottom hole distance is 7338.22 Feet on azimuth 198.23 degrees from Wellhead
Calculation method uses Minimum Curvature method
Prepared by Integrated Petroleum Technologies, Inc.
Date Printed: 1-Oct-2015



SYSDRILL
Well Design Combined Report
Wellbore: HOMESTEAD 4 (PWB)

Interpolated Wellpath								
MD[ft]	Inc[deg]	Azi[deg]	TVD[ft]	North[ft]	East[ft]	Dogleg [deg/100ft]	Vertical Section[ft]	All Station Comments
9100.00	90.04	179.190	7494.42	1065.04S	2379.08W	==>	1755.84	
9200.00	90.04	179.190	7494.34	1165.03S	2377.66W	==>	1850.37	
9300.00	90.04	179.190	7494.27	1265.02S	2376.25W	==>	1944.89	
9400.00	90.04	179.190	7494.19	1365.01S	2374.84W	==>	2039.42	
9500.00	90.04	179.190	7494.12	1465.00S	2373.42W	==>	2133.95	
9600.00	90.04	179.190	7494.05	1564.99S	2372.01W	==>	2228.48	
9700.00	90.04	179.190	7493.97	1664.98S	2370.60W	==>	2323.01	
9800.00	90.04	179.190	7493.90	1764.97S	2369.19W	==>	2417.54	
9900.00	90.04	179.190	7493.82	1864.96S	2367.77W	==>	2512.07	
10000.00	90.04	179.190	7493.75	1964.95S	2366.36W	==>	2606.60	
10100.00	90.04	179.190	7493.67	2064.94S	2364.95W	==>	2701.13	
10200.00	90.04	179.190	7493.60	2164.93S	2363.53W	==>	2795.66	
10300.00	90.04	179.190	7493.52	2264.92S	2362.12W	==>	2890.19	
10400.00	90.04	179.190	7493.45	2364.91S	2360.71W	==>	2984.72	
10500.00	90.04	179.190	7493.37	2464.90S	2359.29W	==>	3079.25	
10600.00	90.04	179.190	7493.30	2564.89S	2357.88W	==>	3173.78	
10700.00	90.04	179.190	7493.22	2664.88S	2356.47W	==>	3268.30	
10800.00	90.04	179.190	7493.15	2764.87S	2355.06W	==>	3362.83	
10900.00	90.04	179.190	7493.07	2864.86S	2353.64W	==>	3457.36	
11000.00	90.04	179.190	7493.00	2964.85S	2352.23W	==>	3551.89	
11100.00	90.04	179.190	7492.92	3064.84S	2350.82W	==>	3646.42	
11200.00	90.04	179.190	7492.85	3164.83S	2349.40W	==>	3740.95	
11300.00	90.04	179.190	7492.77	3264.82S	2347.99W	==>	3835.48	
11400.00	90.04	179.190	7492.70	3364.81S	2346.58W	==>	3930.01	
11500.00	90.04	179.190	7492.62	3464.80S	2345.16W	==>	4024.54	
11600.00	90.04	179.190	7492.55	3564.79S	2343.75W	==>	4119.07	
11700.00	90.04	179.190	7492.47	3664.78S	2342.34W	==>	4213.60	
11800.00	90.04	179.190	7492.40	3764.77S	2340.92W	==>	4308.13	
11900.00	90.04	179.190	7492.32	3864.76S	2339.51W	==>	4402.66	
12000.00	90.04	179.190	7492.25	3964.75S	2338.10W	==>	4497.19	
12100.00	90.04	179.190	7492.17	4064.74S	2336.69W	==>	4591.72	
12200.00	90.04	179.190	7492.10	4164.73S	2335.27W	==>	4686.24	
12300.00	90.04	179.190	7492.02	4264.72S	2333.86W	==>	4780.77	
12400.00	90.04	179.190	7491.95	4364.71S	2332.45W	==>	4875.30	
12500.00	90.04	179.190	7491.88	4464.70S	2331.03W	==>	4969.83	
12600.00	90.04	179.190	7491.80	4564.69S	2329.62W	==>	5064.36	
12700.00	90.04	179.190	7491.73	4664.68S	2328.21W	==>	5158.89	
12800.00	90.04	179.190	7491.65	4764.67S	2326.79W	==>	5253.42	
12900.00	90.04	179.190	7491.58	4864.66S	2325.38W	==>	5347.95	
13000.00	90.04	179.190	7491.50	4964.65S	2323.97W	==>	5442.48	
13100.00	90.04	179.190	7491.43	5064.64S	2322.56W	==>	5537.01	
13200.00	90.04	179.190	7491.35	5164.63S	2321.14W	==>	5631.54	
13300.00	90.04	179.190	7491.28	5264.62S	2319.73W	==>	5726.07	
13400.00	90.04	179.190	7491.20	5364.61S	2318.32W	==>	5820.60	
13500.00	90.04	179.190	7491.13	5464.60S	2316.90W	==>	5915.13	
13600.00	90.04	179.190	7491.05	5564.59S	2315.49W	==>	6009.65	
13700.00	90.04	179.190	7490.98	5664.58S	2314.08W	==>	6104.18	
13800.00	90.04	179.190	7490.90	5764.57S	2312.66W	==>	6198.71	
13900.00	90.04	179.190	7490.83	5864.56S	2311.25W	==>	6293.24	
14000.00	90.04	179.190	7490.75	5964.55S	2309.84W	==>	6387.77	
14100.00	90.04	179.190	7490.68	6064.54S	2308.43W	==>	6482.30	
14200.00	90.04	179.190	7490.60	6164.53S	2307.01W	==>	6576.83	
14300.00	90.04	179.190	7490.53	6264.52S	2305.60W	==>	6671.36	
14400.00	90.04	179.190	7490.45	6364.51S	2304.19W	==>	6765.89	
14500.00	90.04	179.190	7490.38	6464.50S	2302.77W	==>	6860.42	
14600.00	90.04	179.190	7490.30	6564.49S	2301.36W	==>	6954.95	
14700.00	90.04	179.190	7490.23	6664.48S	2299.95W	==>	7049.48	
14800.00	90.04	179.190	7490.15	6764.47S	2298.53W	==>	7144.01	
14900.00	90.04	179.190	7490.08	6864.46S	2297.12W	==>	7238.54	
15000.00	90.04	179.190	7490.00	6964.45S	2295.71W	==>	7333.07	
15005.46	90.04	179.190	7490.00	6969.91S	2295.63W	==>	7338.22	End of Hold/Target, 4 1/2in Production Liner, HOMESTEAD 4 BH

All data is in Feet unless otherwise stated
Coordinates are from Slot MD's are from Rig and TVD's are from Rig (Planned Datum #1 5161.0ft above Mean Sea Level)
Vertical Section is from 0.00N 0.00E on azimuth 198.230 degrees
Bottom hole distance is 7338.22 Feet on azimuth 198.23 degrees from Wellhead
Calculation method uses Minimum Curvature method
Prepared by Integrated Petroleum Technologies, Inc.
Date Printed: 1-Oct-2015



SYSDRILL
Well Design Combined Report
Wellbore: HOMESTEAD 4 (PWB)

Hole Sections

Diameter [in]	Start MD[ft]	Start TVD[ft]	Start North[ft]	Start East[ft]	End MD[ft]	End TVD[ft]	End North[ft]	End East[ft]
13 1/2	23.00	23.00	0.00N	0.00E	1450.00	1450.00	0.00N	0.00E
8 3/4	1450.00	1450.00	0.00N	0.00E	8324.00	7495.00	289.12S	2390.04W
6 1/8	8324.00	7495.00	289.12S	2390.04W	15005.46	7490.00	6969.91S	2295.63W

Casings

Name	Top MD[ft]	Top TVD[ft]	Top North[ft]	Top East[ft]	Shoe MD[ft]	Shoe TVD[ft]	Shoe North[ft]	Shoe East[ft]
9 5/8in Surface Casing	23.00	23.00	0.00N	0.00E	1450.00	1450.00	0.00N	0.00E
7.0in Intermediate Casing	23.00	23.00	0.00N	0.00E	8324.00	7495.00	289.12S	2390.04W
4 1/2in Production Liner	7430.00	6977.58	287.10N	2166.57W	15005.46	7490.00	6969.91S	2295.63W

Targets

Name	North[ft]	East[ft]	TVD[ft]	Latitude	Longitude	Northing	Easting
HOMESTEAD 4 BH	6969.91S	2295.63W	7490.00	39.98812000	-104.76751000	1239366.96	3205243.12
HOMESTEAD 4 T1	289.44S	2390.04W	7495.00	40.00646000	-104.76765000	1246047.19	3205148.72

Survey Tool Program

Reference	Survey Name	MD[ft]	TVD[ft]	Survey Tool	Error Model
400446	Planned	15005.46	7490.00	ISCWSA MWD	Rev 3 + Fixed Rig + Rotating

Notes

All data is in Feet unless otherwise stated
Coordinates are from Slot MD's are from Rig and TVD's are from Rig (Planned Datum #1 5161.0ft above Mean Sea Level)
Vertical Section is from 0.00N 0.00E on azimuth 198.230 degrees
Bottom hole distance is 7338.22 Feet on azimuth 198.23 degrees from Wellhead
Calculation method uses Minimum Curvature method
Prepared by Integrated Petroleum Technologies, Inc.
Date Printed: 1-Oct-2015



SYSDRILL
Closest Approach + Clearance Factor Summary Report
Wellbore: HOMESTEAD 4 (PWB)

Ellipse separations are reported ONLY if BOTH wells have uncertainty data
Only Depth and Magnetic Reference Field error terms are correlated across tie points
Scan limit is calculated on CENTRE to CENTRE distance
Summary data uses Closest Approach clearance calculation for all minima
Hole size/Casings ARE included
Hole size/Casings are NOT subtracted from Centre-Centre distance
Confidence limit of 95.00% / 2.80 SD.

Wellbore		
Name	Created	Last Revised
HOMESTEAD 4 (PWB)	17-Aug-2015	1-Oct-2015

Well		
Name	Government ID	Last Revised
HOMESTEAD 4		17-Aug-2015

Slot						
Name	Latitude	Longitude	Grid Northing	Grid Easting	North	East
HOMESTEAD 4	40.00720000	-104.75911000	1246336.6140	3207538.6657	4.04N	47.59E

Installation						
Name	Installation Position (Latitude)	Installation Position (Longitude)	Easting	Northing	Coord System Name	North Alignment
Homestead	40.00719000	-104.75928000	3207491.0767	1246332.5735	CO83-NF on NORTH AMERICAN DATUM 1983 datum	Grid

Clearance Summary								
Offset WellName	Separation [ft]	MD[ft]	Diverging From[ft]	Ellipse Separation [ft]	Ellipse MD[ft]	Clearance Factor	Clearance MD[ft]	
HOMESTEAD 3	16.81	1499.38	1499.38	-135.44	15005.46	0.59	15005.46	
HOMESTEAD 5	16.81	1525.00	15002.69	7.26	1564.99	1.09	15002.69	
HOMESTEAD 6	30.81	1525.00	15003.88	15.72	15003.88	1.04	15003.88	
HOMESTEAD 2	33.81	1474.00	15003.14	24.54	1433.76	1.42	15005.46	
HOMESTEAD 7	47.62	1525.00	8327.50	38.09	1548.59	1.54	15005.46	
HOMESTEAD 1	47.76	1449.00	1449.00	38.40	1449.00	1.53	15005.46	
HOMESTEAD 8	64.43	1525.00	1525.00	54.89	1548.59	2.20	15005.46	
HOMESTEAD 9	78.44	1525.00	15005.46	68.90	1548.59	2.57	15005.46	
HOMESTEAD 10	95.25	1525.00	8327.03	85.71	1548.59	3.08	15005.46	
HOMESTEAD 11	112.05	1525.00	8327.92	102.52	1548.59	3.67	15005.46	
HOMESTEAD 12	128.86	1525.00	15005.46	119.33	1548.59	4.11	15005.46	
BERGMAN #2	237.76	14121.62	14121.62	55.24	14097.80	1.30	14081.40	
HOMESTEAD 13	341.23	2073.52	15005.46	328.36	2089.93	4.63	15005.46	
HOMESTEAD 14	365.88	1975.10	15005.46	353.57	1991.50	5.13	15005.46	
HOMESTEAD 15	385.10	1925.89	15005.46	373.11	1942.29	5.54	15005.46	
HOMESTEAD 16	406.19	1532.19	15005.46	394.85	1876.67	5.99	15005.46	
HOMESTEAD 17	420.20	1525.00	15005.46	410.68	1548.59	6.47	15005.46	
HOMESTEAD 18	437.01	1525.00	15005.46	427.49	1548.59	6.89	15005.46	
HOMESTEAD 19	453.82	1525.00	15005.46	444.30	1548.59	7.34	15005.46	
HOMESTEAD 20	470.63	1525.00	15005.46	461.10	1548.59	7.82	15005.46	
HOMESTEAD 21	484.63	1525.00	15005.46	475.12	1548.59	8.25	15005.46	
HOMESTEAD 22	501.44	1499.38	15005.46	491.99	1532.19	8.70	15005.46	
HOMESTEAD 23	518.25	1482.97	15005.46	508.94	1515.78	9.17	15005.46	

All data is in Feet unless otherwise stated
Coordinates are from Slot MD's are from Rig and TVD's are from Rig (Planned Datum #1 5161.0ft above Mean Sea Level)
Vertical Section is from 0.00N 0.00E on azimuth 198.230 degrees
Prepared by Integrated Petroleum Technologies, Inc.
Date Printed: 1-Oct-2015

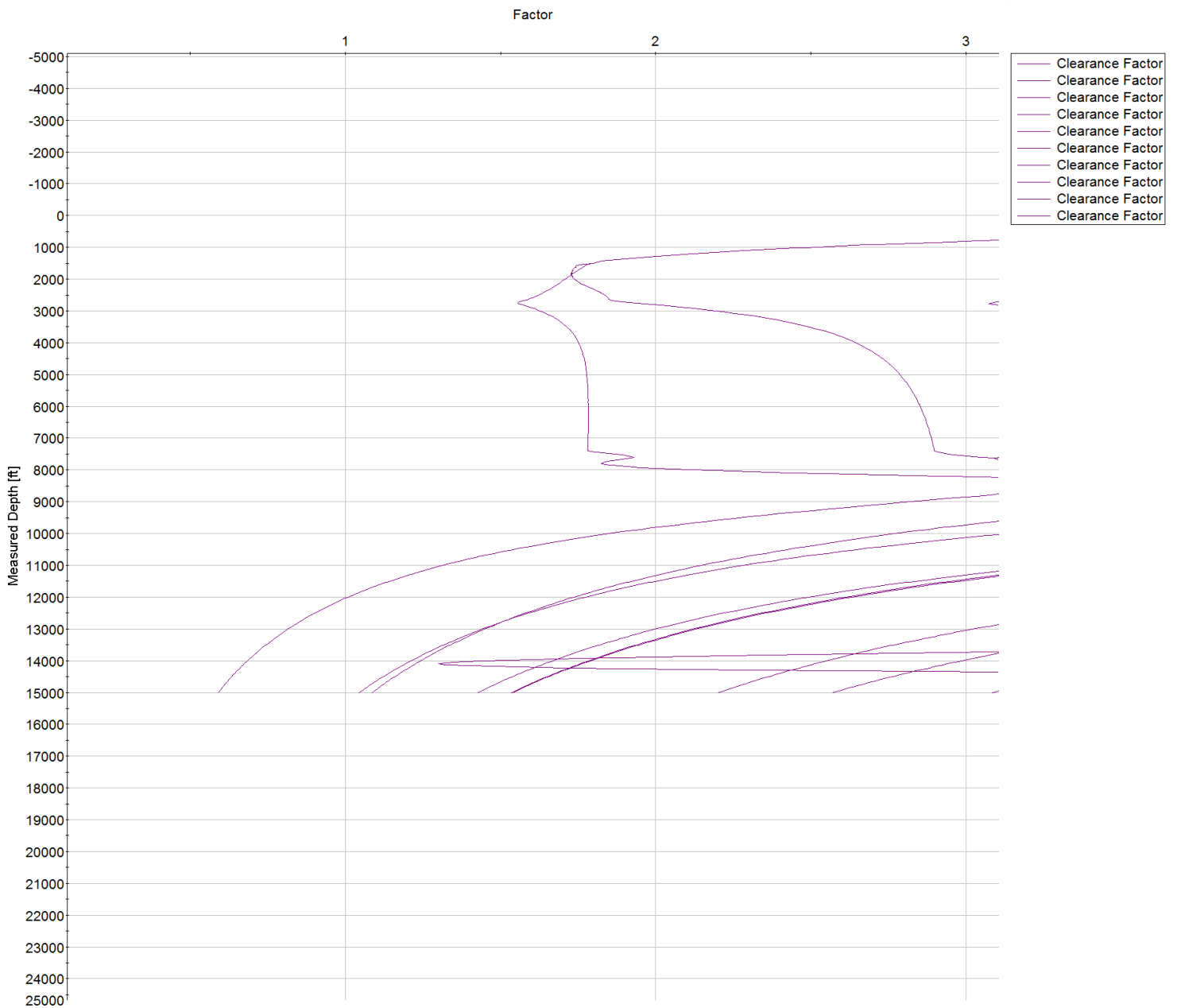


SYSDRILL
Closest Approach + Clearance Factor Summary Report
Wellbore: HOMESTEAD 4 (PWB)

Clearance Summary							
Offset WellName	Separation [ft]	MD[ft]	Diverging From[ft]	Ellipse Separation [ft]	Ellipse MD[ft]	Clearance Factor	Clearance MD[ft]
HOMESTEAD 24	532.25	1457.00	15005.46	523.01	1433.76	9.60	15005.46
WILLARD, JOHN W. GAS UNIT #1	1151.65	2999.37	2999.37	1121.96	3090.59	27.70	4895.05
VISTA USX #WW33-08D	2298.88	7923.00	7923.00	2231.42	7946.23	30.08	9061.71
UPRR 50 PAN AM M #1	2844.31	1525.00	9509.66	2828.05	1548.59	55.41	11883.24
BEN STEVENSON GAS UNIT #1	3338.26	15005.46	15005.46	3141.56	15005.46	16.97	15005.46
BERGMAN #1	3343.13	1525.00	11204.63	3326.95	1564.99	31.43	11883.24
BRIGHTON COMPANY #1	5891.94	13844.83	13844.83	5718.30	13933.76	31.86	15005.46
SHAW A #1	6910.79	15005.46	15005.46	6718.88	15005.46	36.01	15005.46



SYSDRILL
Closest Approach + Clearance Factor Summary Report
Wellbore: HOMESTEAD 4 (PWB)





SYSDRILL
Closest Approach + Clearance Factor Summary Report
Wellbore: HOMESTEAD 4 (PWB)

