

Petro Operating Company

Location Weld County, CO
Field Wattenberg
Installation Homestead

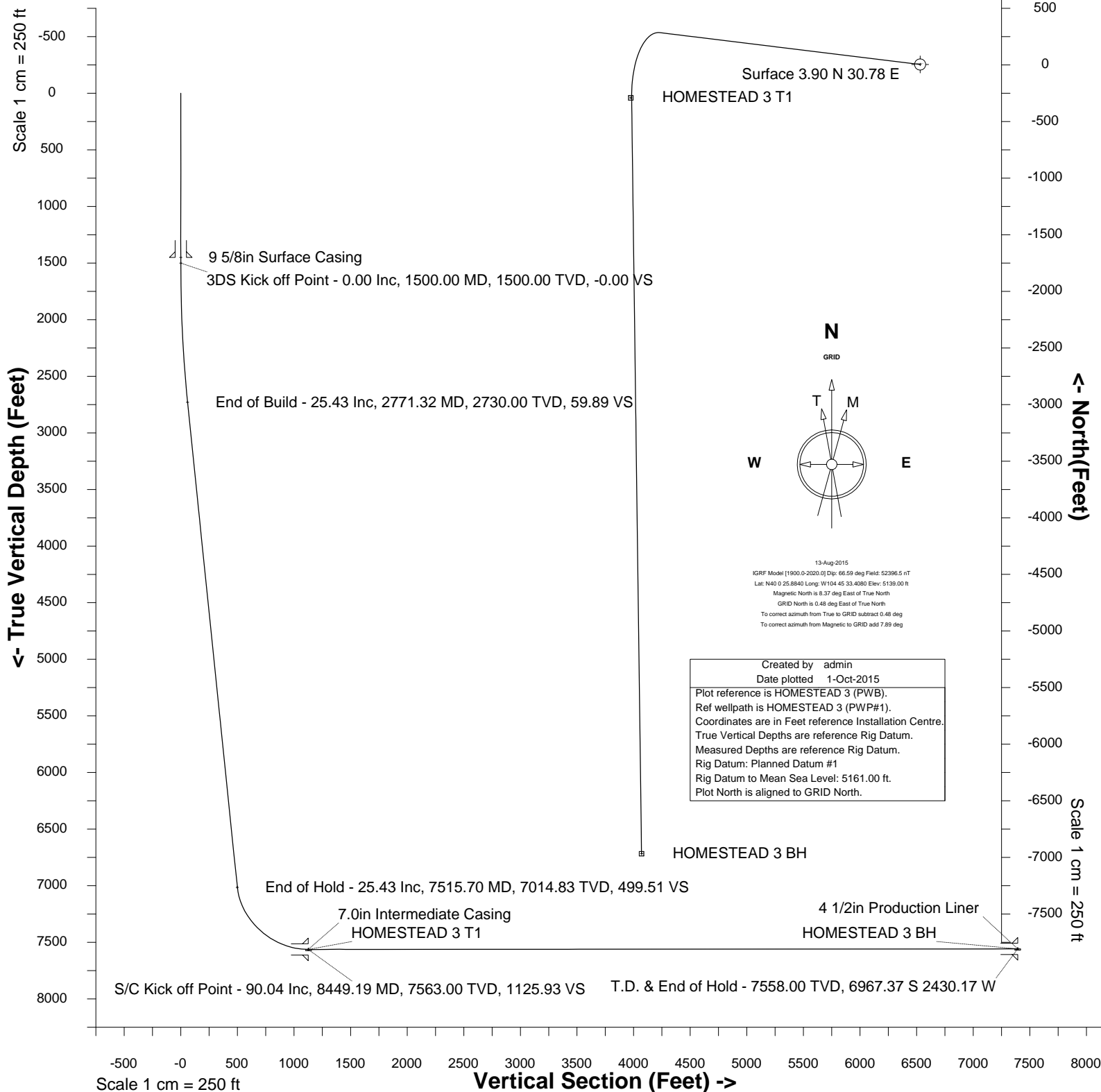
Slot HOMESTEAD 3
Well HOMESTEAD 3
Wellbore HOMESTEAD 3 (PWB)



Scale 1 cm = 250 ft

East (Feet) ->

-3000 -2500 -2000 -1500 -1000 -500 0 500



Azimuth 199.44 with reference 3.90 N, 30.78 E from Installation Centre



SYSDRILL
Well Design Combined Report
Wellbore: HOMESTEAD 3 (PWB)

Wellhead Details							
Name	Latitude	Longitude	Northing	Easting	North	East	Slot Elevation Above Ground
HOMESTEAD 3	40.00720000	-104.75917000	1246336.4735	3207521.8588	3.90N	30.78E	0.00

Declination		
Date	Source	Time
13-Aug-2015	IGRF Model [1900.0-2020.0]	08:38

Installation Details						
Name	Installation Position (Latitude)	Installation Position (Longitude)	Northing	Easting	Coord System Name	North Alignment
Homestead	40.00719000	-104.75928000	1246332.5735	3207491.0767	CO83-NF on NORTH AMERICAN DATUM 1983 datum	Grid

Summary Wellpath									
MD[ft]	Inc[deg]	Azi[deg]	TVD[ft]	North[ft]	East[ft]	Dogleg [deg/100ft]	Vertical Section[ft]	Northing	Easting
23.00	0.00	0.000	23.00	0.00N	0.00E		0.00	1246336.47	3207521.86
1500.00	0.00	276.980	1500.00	0.00N	0.00E	==>	0.00	1246336.47	3207521.86
2771.32	25.43	276.980	2730.00	33.72N	275.43W	2.00	59.89	1246370.20	3207246.43
7515.70	25.43	276.980	7014.83	281.28N	2297.34W	==>	499.50	1246617.74	3205224.60
8449.19	90.04	179.250	7563.00	294.44S	2548.28W	10.00	1125.92	1246042.04	3204973.67
15126.59	90.04	179.250	7558.00	6971.27S	2460.96W	==>	7392.90	1239365.46	3205060.99

Interpolated Wellpath								
MD[ft]	Inc[deg]	Azi[deg]	TVD[ft]	North[ft]	East[ft]	Dogleg [deg/100ft]	Vertical Section[ft]	All Station Comments
0.00	0.00	0.000	0.00	0.00N	0.00E		0.00	Rig Datum Slot Datum
23.00	0.00	0.000	23.00	0.00N	0.00E	==>	0.00	
100.00	0.00	0.000	100.00	0.00N	0.00E	==>	0.00	
200.00	0.00	0.000	200.00	0.00N	0.00E	==>	0.00	
300.00	0.00	0.000	300.00	0.00N	0.00E	==>	0.00	
400.00	0.00	0.000	400.00	0.00N	0.00E	==>	0.00	
500.00	0.00	0.000	500.00	0.00N	0.00E	==>	0.00	
600.00	0.00	0.000	600.00	0.00N	0.00E	==>	0.00	
700.00	0.00	0.000	700.00	0.00N	0.00E	==>	0.00	
800.00	0.00	0.000	800.00	0.00N	0.00E	==>	0.00	
900.00	0.00	0.000	900.00	0.00N	0.00E	==>	0.00	
1000.00	0.00	0.000	1000.00	0.00N	0.00E	==>	0.00	
1100.00	0.00	0.000	1100.00	0.00N	0.00E	==>	0.00	
1200.00	0.00	0.000	1200.00	0.00N	0.00E	==>	0.00	
1300.00	0.00	0.000	1300.00	0.00N	0.00E	==>	0.00	
1400.00	0.00	0.000	1400.00	0.00N	0.00E	==>	0.00	9 5/8in Surface Casing 3DS Kick off Point
1450.00	0.00	0.000	1450.00	0.00N	0.00E	==>	0.00	
1500.00	0.00	276.980	1500.00	0.00N	0.00E	==>	0.00	
1600.00	2.00	276.980	1599.98	0.21N	1.73W	2.00	0.38	
1700.00	4.00	276.980	1699.84	0.85N	6.93W	2.00	1.51	
1800.00	6.00	276.980	1799.45	1.91N	15.58W	2.00	3.39	
1900.00	8.00	276.980	1898.70	3.39N	27.67W	2.00	6.02	
2000.00	10.00	276.980	1997.47	5.29N	43.20W	2.00	9.39	
2100.00	12.00	276.980	2095.62	7.61N	62.14W	2.00	13.51	
2200.00	14.00	276.980	2193.06	10.34N	84.47W	2.00	18.37	
2300.00	16.00	276.980	2289.64	13.49N	110.15W	2.00	23.95	
2400.00	18.00	276.980	2385.27	17.04N	139.17W	2.00	30.26	
2500.00	20.00	276.980	2479.82	21.00N	171.49W	2.00	37.29	
2600.00	22.00	276.980	2573.17	25.35N	207.06W	2.00	45.02	
2700.00	24.00	276.980	2665.21	30.10N	245.84W	2.00	53.45	
2771.32	25.43	276.980	2730.00	33.72N	275.43W	2.00	59.89	End of Build
2800.00	25.43	276.980	2755.90	35.22N	287.66W	==>	62.54	
2900.00	25.43	276.980	2846.22	40.44N	330.27W	==>	71.81	
3000.00	25.43	276.980	2936.53	45.66N	372.89W	==>	81.08	
3100.00	25.43	276.980	3026.84	50.87N	415.51W	==>	90.34	
3200.00	25.43	276.980	3117.16	56.09N	458.12W	==>	99.61	

All data is in Feet unless otherwise stated
Coordinates are from Slot MD's are from Rig and TVD's are from Rig (Planned Datum #1 5161.0ft above Mean Sea Level)
Vertical Section is from 0.00N 0.00E on azimuth 199.440 degrees
Bottom hole distance is 7392.90 Feet on azimuth 199.44 degrees from Wellhead
Calculation method uses Minimum Curvature method
Prepared by Integrated Petroleum Technologies, Inc.
Date Printed: 1-Oct-2015



SYSDRILL
Well Design Combined Report
Wellbore: HOMESTEAD 3 (PWB)

Interpolated Wellpath								
MD[ft]	Inc[deg]	Azi[deg]	TVD[ft]	North[ft]	East[ft]	Dogleg [deg/100ft]	Vertical Section[ft]	All Station Comments
3300.00	25.43	276.980	3207.47	61.31N	500.74W	==>	108.87	
3400.00	25.43	276.980	3297.79	66.53N	543.36W	==>	118.14	
3500.00	25.43	276.980	3388.10	71.74N	585.97W	==>	127.41	
3600.00	25.43	276.980	3478.41	76.96N	628.59W	==>	136.67	
3700.00	25.43	276.980	3568.73	82.18N	671.21W	==>	145.94	
3800.00	25.43	276.980	3659.04	87.40N	713.83W	==>	155.21	
3900.00	25.43	276.980	3749.35	92.62N	756.44W	==>	164.47	
4000.00	25.43	276.980	3839.67	97.83N	799.06W	==>	173.74	
4100.00	25.43	276.980	3929.98	103.05N	841.68W	==>	183.00	
4200.00	25.43	276.980	4020.30	108.27N	884.29W	==>	192.27	
4300.00	25.43	276.980	4110.61	113.49N	926.91W	==>	201.54	
4400.00	25.43	276.980	4200.92	118.71N	969.53W	==>	210.80	
4500.00	25.43	276.980	4291.24	123.92N	1012.14W	==>	220.07	
4600.00	25.43	276.980	4381.55	129.14N	1054.76W	==>	229.33	
4700.00	25.43	276.980	4471.86	134.36N	1097.38W	==>	238.60	
4800.00	25.43	276.980	4562.18	139.58N	1139.99W	==>	247.87	
4900.00	25.43	276.980	4652.49	144.80N	1182.61W	==>	257.13	
5000.00	25.43	276.980	4742.81	150.01N	1225.23W	==>	266.40	
5100.00	25.43	276.980	4833.12	155.23N	1267.85W	==>	275.66	
5200.00	25.43	276.980	4923.43	160.45N	1310.46W	==>	284.93	
5300.00	25.43	276.980	5013.75	165.67N	1353.08W	==>	294.20	
5400.00	25.43	276.980	5104.06	170.88N	1395.70W	==>	303.46	
5500.00	25.43	276.980	5194.37	176.10N	1438.31W	==>	312.73	
5600.00	25.43	276.980	5284.69	181.32N	1480.93W	==>	321.99	
5700.00	25.43	276.980	5375.00	186.54N	1523.55W	==>	331.26	
5800.00	25.43	276.980	5465.32	191.76N	1566.16W	==>	340.53	
5900.00	25.43	276.980	5555.63	196.97N	1608.78W	==>	349.79	
6000.00	25.43	276.980	5645.94	202.19N	1651.40W	==>	359.06	
6100.00	25.43	276.980	5736.26	207.41N	1694.01W	==>	368.32	
6200.00	25.43	276.980	5826.57	212.63N	1736.63W	==>	377.59	
6300.00	25.43	276.980	5916.88	217.85N	1779.25W	==>	386.86	
6400.00	25.43	276.980	6007.20	223.06N	1821.87W	==>	396.12	
6500.00	25.43	276.980	6097.51	228.28N	1864.48W	==>	405.39	
6600.00	25.43	276.980	6187.83	233.50N	1907.10W	==>	414.66	
6700.00	25.43	276.980	6278.14	238.72N	1949.72W	==>	423.92	
6800.00	25.43	276.980	6368.45	243.93N	1992.33W	==>	433.19	
6900.00	25.43	276.980	6458.77	249.15N	2034.95W	==>	442.45	
7000.00	25.43	276.980	6549.08	254.37N	2077.57W	==>	451.72	
7100.00	25.43	276.980	6639.39	259.59N	2120.18W	==>	460.99	
7200.00	25.43	276.980	6729.71	264.81N	2162.80W	==>	470.25	
7300.00	25.43	276.980	6820.02	270.02N	2205.42W	==>	479.52	
7400.00	25.43	276.980	6910.33	275.24N	2248.03W	==>	488.78	
7500.00	25.43	276.980	7000.65	280.46N	2290.65W	==>	498.05	
7515.70	25.43	276.980	7014.83	281.28N	2297.34W	==>	499.50	End of Hold
7600.00	25.71	257.380	7091.01	279.48N	2333.21W	10.00	513.14	
7700.00	29.16	236.880	7179.95	261.39N	2374.89W	10.00	544.08	
7800.00	35.01	221.530	7264.78	226.51N	2414.41W	10.00	590.12	
7900.00	42.28	210.480	7342.93	175.92N	2450.58W	10.00	649.87	
8000.00	50.34	202.260	7412.01	111.14N	2482.30W	10.00	721.51	
8100.00	58.85	195.810	7469.93	34.15N	2508.61W	10.00	802.87	
8200.00	67.64	190.450	7514.93	52.72S	2528.71W	10.00	891.47	
8300.00	76.57	185.730	7545.64	146.82S	2541.98W	10.00	984.63	
8400.00	85.59	181.350	7561.13	245.30S	2548.03W	10.00	1079.50	
8449.00	90.03	179.260	7563.00	294.25S	2548.28W	10.00	1125.74	7.0in Intermediate Casing
8449.19	90.04	179.250	7563.00	294.44S	2548.28W	10.00	1125.92	S/C Kick off Point/Target, HOMESTEAD 3 T1
8500.00	90.04	179.250	7562.96	345.25S	2547.62W	==>	1173.61	
8600.00	90.04	179.250	7562.89	445.24S	2546.31W	==>	1267.46	
8700.00	90.04	179.250	7562.81	545.23S	2545.00W	==>	1361.32	
8800.00	90.04	179.250	7562.74	645.22S	2543.69W	==>	1455.17	
8900.00	90.04	179.250	7562.66	745.21S	2542.39W	==>	1549.02	
9000.00	90.04	179.250	7562.59	845.20S	2541.08W	==>	1642.88	
9100.00	90.04	179.250	7562.51	945.19S	2539.77W	==>	1736.73	

All data is in Feet unless otherwise stated
Coordinates are from Slot MD's are from Rig and TVD's are from Rig (Planned Datum #1 5161.0ft above Mean Sea Level)
Vertical Section is from 0.00N 0.00E on azimuth 199.440 degrees
Bottom hole distance is 7392.90 Feet on azimuth 199.44 degrees from Wellhead
Calculation method uses Minimum Curvature method
Prepared by Integrated Petroleum Technologies, Inc.
Date Printed: 1-Oct-2015



SYSDRILL
Well Design Combined Report
Wellbore: HOMESTEAD 3 (PWB)

Interpolated Wellpath								
MD[ft]	Inc[deg]	Azi[deg]	TVD[ft]	North[ft]	East[ft]	Dogleg [deg/100ft]	Vertical Section[ft]	All Station Comments
9200.00	90.04	179.250	7562.44	1045.19S	2538.46W	==>	1830.58	
9300.00	90.04	179.250	7562.36	1145.18S	2537.16W	==>	1924.44	
9400.00	90.04	179.250	7562.29	1245.17S	2535.85W	==>	2018.29	
9500.00	90.04	179.250	7562.21	1345.16S	2534.54W	==>	2112.14	
9600.00	90.04	179.250	7562.14	1445.15S	2533.23W	==>	2206.00	
9700.00	90.04	179.250	7562.06	1545.14S	2531.92W	==>	2299.85	
9800.00	90.04	179.250	7561.99	1645.13S	2530.62W	==>	2393.70	
9900.00	90.04	179.250	7561.91	1745.13S	2529.31W	==>	2487.56	
10000.00	90.04	179.250	7561.84	1845.12S	2528.00W	==>	2581.41	
10100.00	90.04	179.250	7561.76	1945.11S	2526.69W	==>	2675.27	
10200.00	90.04	179.250	7561.69	2045.10S	2525.39W	==>	2769.12	
10300.00	90.04	179.250	7561.61	2145.09S	2524.08W	==>	2862.97	
10400.00	90.04	179.250	7561.54	2245.08S	2522.77W	==>	2956.83	
10500.00	90.04	179.250	7561.46	2345.07S	2521.46W	==>	3050.68	
10600.00	90.04	179.250	7561.39	2445.07S	2520.15W	==>	3144.53	
10700.00	90.04	179.250	7561.31	2545.06S	2518.85W	==>	3238.39	
10800.00	90.04	179.250	7561.24	2645.05S	2517.54W	==>	3332.24	
10900.00	90.04	179.250	7561.16	2745.04S	2516.23W	==>	3426.09	
11000.00	90.04	179.250	7561.09	2845.03S	2514.92W	==>	3519.95	
11100.00	90.04	179.250	7561.02	2945.02S	2513.62W	==>	3613.80	
11200.00	90.04	179.250	7560.94	3045.01S	2512.31W	==>	3707.65	
11300.00	90.04	179.250	7560.87	3145.01S	2511.00W	==>	3801.51	
11400.00	90.04	179.250	7560.79	3245.00S	2509.69W	==>	3895.36	
11500.00	90.04	179.250	7560.72	3344.99S	2508.38W	==>	3989.21	
11600.00	90.04	179.250	7560.64	3444.98S	2507.08W	==>	4083.07	
11700.00	90.04	179.250	7560.57	3544.97S	2505.77W	==>	4176.92	
11800.00	90.04	179.250	7560.49	3644.96S	2504.46W	==>	4270.77	
11900.00	90.04	179.250	7560.42	3744.95S	2503.15W	==>	4364.63	
12000.00	90.04	179.250	7560.34	3844.95S	2501.85W	==>	4458.48	
12100.00	90.04	179.250	7560.27	3944.94S	2500.54W	==>	4552.33	
12200.00	90.04	179.250	7560.19	4044.93S	2499.23W	==>	4646.19	
12300.00	90.04	179.250	7560.12	4144.92S	2497.92W	==>	4740.04	
12400.00	90.04	179.250	7560.04	4244.91S	2496.61W	==>	4833.89	
12500.00	90.04	179.250	7559.97	4344.90S	2495.31W	==>	4927.75	
12600.00	90.04	179.250	7559.89	4444.89S	2494.00W	==>	5021.60	
12700.00	90.04	179.250	7559.82	4544.89S	2492.69W	==>	5115.46	
12800.00	90.04	179.250	7559.74	4644.88S	2491.38W	==>	5209.31	
12900.00	90.04	179.250	7559.67	4744.87S	2490.08W	==>	5303.16	
13000.00	90.04	179.250	7559.59	4844.86S	2488.77W	==>	5397.02	
13100.00	90.04	179.250	7559.52	4944.85S	2487.46W	==>	5490.87	
13200.00	90.04	179.250	7559.44	5044.84S	2486.15W	==>	5584.72	
13300.00	90.04	179.250	7559.37	5144.83S	2484.84W	==>	5678.58	
13400.00	90.04	179.250	7559.29	5244.83S	2483.54W	==>	5772.43	
13500.00	90.04	179.250	7559.22	5344.82S	2482.23W	==>	5866.28	
13600.00	90.04	179.250	7559.14	5444.81S	2480.92W	==>	5960.14	
13700.00	90.04	179.250	7559.07	5544.80S	2479.61W	==>	6053.99	
13800.00	90.04	179.250	7558.99	5644.79S	2478.31W	==>	6147.84	
13900.00	90.04	179.250	7558.92	5744.78S	2477.00W	==>	6241.70	
14000.00	90.04	179.250	7558.84	5844.77S	2475.69W	==>	6335.55	
14100.00	90.04	179.250	7558.77	5944.77S	2474.38W	==>	6429.40	
14200.00	90.04	179.250	7558.69	6044.76S	2473.07W	==>	6523.26	
14300.00	90.04	179.250	7558.62	6144.75S	2471.77W	==>	6617.11	
14400.00	90.04	179.250	7558.54	6244.74S	2470.46W	==>	6710.96	
14500.00	90.04	179.250	7558.47	6344.73S	2469.15W	==>	6804.82	
14600.00	90.04	179.250	7558.39	6444.72S	2467.84W	==>	6898.67	
14700.00	90.04	179.250	7558.32	6544.71S	2466.53W	==>	6992.52	
14800.00	90.04	179.250	7558.24	6644.71S	2465.23W	==>	7086.38	
14900.00	90.04	179.250	7558.17	6744.70S	2463.92W	==>	7180.23	End of Hold/Target, 4 1/2in Production Liner, HOMESTEAD 3 BH
15000.00	90.04	179.250	7558.09	6844.69S	2462.61W	==>	7274.08	
15100.00	90.04	179.250	7558.02	6944.68S	2461.30W	==>	7367.94	
15126.59	90.04	179.250	7558.00	6971.27S	2460.96W	==>	7392.90	

All data is in Feet unless otherwise stated
Coordinates are from Slot MD's are from Rig and TVD's are from Rig (Planned Datum #1 5161.0ft above Mean Sea Level)
Vertical Section is from 0.00N 0.00E on azimuth 199.440 degrees
Bottom hole distance is 7392.90 Feet on azimuth 199.44 degrees from Wellhead
Calculation method uses Minimum Curvature method
Prepared by Integrated Petroleum Technologies, Inc.
Date Printed: 1-Oct-2015



SYSDRILL
Well Design Combined Report
Wellbore: HOMESTEAD 3 (PWB)

Hole Sections								
Diameter [in]	Start MD[ft]	Start TVD[ft]	Start North[ft]	Start East[ft]	End MD[ft]	End TVD[ft]	End North[ft]	End East[ft]
13 1/2	23.00	23.00	0.00N	0.00E	1450.00	1450.00	0.00N	0.00E
8 3/4	1450.00	1450.00	0.00N	0.00E	8449.00	7563.00	294.25S	2548.28W
6 1/8	8449.00	7563.00	294.25S	2548.28W	15126.59	7558.00	6971.27S	2460.96W

Casings								
Name	Top MD[ft]	Top TVD[ft]	Top North[ft]	Top East[ft]	Shoe MD[ft]	Shoe TVD[ft]	Shoe North[ft]	Shoe East[ft]
9 5/8in Surface Casing	23.00	23.00	0.00N	0.00E	1450.00	1450.00	0.00N	0.00E
7.0in Intermediate Casing	23.00	23.00	0.00N	0.00E	8449.00	7563.00	294.25S	2548.28W
4 1/2in Production Liner	7555.00	7050.36	281.98N	2314.09W	15126.59	7558.00	6971.27S	2460.96W

Targets							
Name	North[ft]	East[ft]	TVD[ft]	Latitude	Longitude	Northing	Easting
HOMESTEAD 3 BH	6971.27S	2460.96W	7558.00	39.98812000	-104.76816000	1239365.46	3205060.99
HOMESTEAD 3 T1	294.44S	2555.28W	7563.00	40.00645000	-104.76830000	1246042.04	3204966.67

Survey Tool Program					
Reference	Survey Name	MD[ft]	TVD[ft]	Survey Tool	Error Model
399765	Planned	15126.59	7558.00	ISCWSA MWD	Rev 3 + Fixed Rig + Rotating

Notes



SYSDRILL
Closest Approach + Clearance Factor Summary Report
Wellbore: HOMESTEAD 3 (PWB)

Ellipse separations are reported ONLY if BOTH wells have uncertainty data
Only Depth and Magnetic Reference Field error terms are correlated across tie points
Scan limit is calculated on CENTRE to CENTRE distance
Summary data uses Closest Approach clearance calculation for all minima
Hole size/Casings ARE included
Hole size/Casings are NOT subtracted from Centre-Centre distance
Confidence limit of 95.00% / 2.80 SD.

Wellbore		
Name	Created	Last Revised
HOMESTEAD 3 (PWB)	17-Aug-2015	23-Sep-2015

Well		
Name	Government ID	Last Revised
HOMESTEAD 3		17-Aug-2015

Slot						
Name	Latitude	Longitude	Grid Northing	Grid Easting	North	East
HOMESTEAD 3	40.00720000	-104.75917000	1246336.4735	3207521.8588	3.90N	30.78E

Installation						
Name	Installation Position (Latitude)	Installation Position (Longitude)	Easting	Northing	Coord System Name	North Alignment
Homestead	40.00719000	-104.75928000	3207491.0767	1246332.5735	CO83-NF on NORTH AMERICAN DATUM 1983 datum	Grid

Clearance Summary								
Offset WellName	Separation [ft]	MD[ft]	Diverging From[ft]	Ellipse Separation [ft]	Ellipse MD[ft]	Clearance Factor	Clearance MD[ft]	
HOMESTEAD 4	16.81	1500.00	1500.00	-134.82	15126.59	0.59	15126.59	
HOMESTEAD 2	17.20	1474.00	15125.59	-31.28	15126.59	0.89	15126.59	
HOMESTEAD 1	31.03	1449.00	15124.90	13.33	15126.59	1.04	15126.59	
HOMESTEAD 5	33.62	1500.00	7650.95	24.22	1515.78	1.17	15123.00	
HOMESTEAD 6	47.62	1500.00	1500.00	38.23	1515.78	1.54	15126.59	
HOMESTEAD 7	64.43	1500.00	1500.00	55.04	1515.78	2.08	15126.59	
HOMESTEAD 8	81.24	1500.00	1500.00	71.84	1515.78	2.62	15126.59	
HOMESTEAD 9	95.25	1500.00	1500.00	85.85	1515.78	3.08	15126.59	
HOMESTEAD 10	112.05	1500.00	1500.00	102.66	1515.78	3.62	15126.59	
HOMESTEAD 11	128.86	1500.00	1500.00	119.47	1515.78	4.14	15126.59	
HOMESTEAD 12	145.67	1500.00	1500.00	136.28	1515.78	4.62	15126.59	
HOMESTEAD 13	362.46	2040.72	15126.59	349.74	2057.12	5.16	15126.59	
HOMESTEAD 14	386.37	1942.29	15126.59	374.22	1975.10	5.61	15126.59	
HOMESTEAD 15	405.22	1893.08	15125.88	393.38	1923.00	6.06	15125.88	
BERGMAN #2	418.97	14243.38	14243.38	237.03	14212.63	2.29	14179.82	
HOMESTEAD 16	423.00	1500.00	15126.59	413.62	1515.78	6.52	15126.59	
HOMESTEAD 17	437.01	1500.00	15126.59	427.63	1515.78	6.96	15126.59	
HOMESTEAD 18	453.82	1500.00	15126.59	444.44	1515.78	7.41	15126.59	
HOMESTEAD 19	470.63	1500.00	15126.59	461.25	1515.78	7.87	15126.59	
HOMESTEAD 20	487.43	1500.00	15126.59	478.05	1515.78	8.31	15126.59	
HOMESTEAD 21	501.44	1500.00	15126.59	492.06	1515.78	8.76	15126.59	
HOMESTEAD 22	518.25	1500.00	15126.59	508.89	1515.78	9.22	15126.59	
HOMESTEAD 23	535.06	1482.97	15126.59	525.77	1500.00	9.66	15126.59	

All data is in Feet unless otherwise stated
Coordinates are from Slot MD's are from Rig and TVD's are from Rig (Planned Datum #1 5161.0ft above Mean Sea Level)
Vertical Section is from 0.00N 0.00E on azimuth 199.440 degrees
Prepared by Integrated Petroleum Technologies, Inc.
Date Printed: 1-Oct-2015

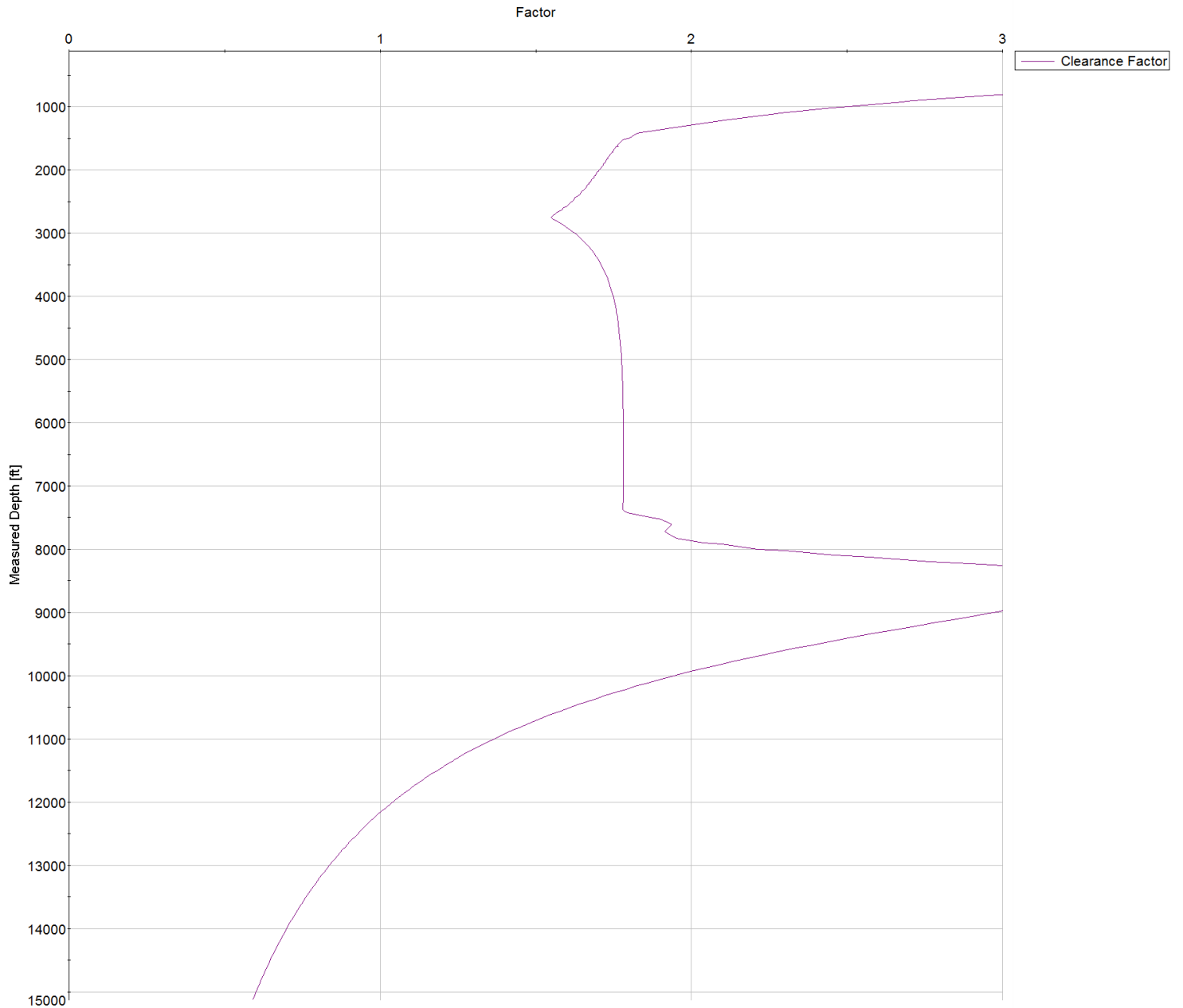


SYSDRILL
Closest Approach + Clearance Factor Summary Report
Wellbore: HOMESTEAD 3 (PWB)

Clearance Summary							
Offset WellName	Separation [ft]	MD[ft]	Diverging From[ft]	Ellipse Separation [ft]	Ellipse MD[ft]	Clearance Factor	Clearance MD[ft]
HOMESTEAD 24	549.06	1457.00	15126.59	539.82	1433.76	10.11	15126.59
WILLARD, JOHN W. GAS UNIT #1	1157.58	2897.81	2897.81	1128.93	2975.76	28.38	4780.22
VISTA USX #WW33-08D	2137.31	8044.65	8044.65	2067.62	8061.06	27.29	8996.10
UPRR 50 PAN AM M #1	2858.86	1500.00	9626.58	2842.77	1523.00	56.67	12145.70
BERGMAN #1	3349.09	1500.00	11323.00	3333.07	1548.59	32.81	12080.09
BEN STEVENSON GAS UNIT #1	3481.17	15126.59	15126.59	3279.82	15126.59	17.29	15126.59
BRIGHTON COMPANY #1	6072.85	13966.57	13966.57	5899.02	14048.59	32.79	15126.59
SHAW A #1	7048.89	15126.59	15126.59	6852.98	15126.59	35.98	15126.59



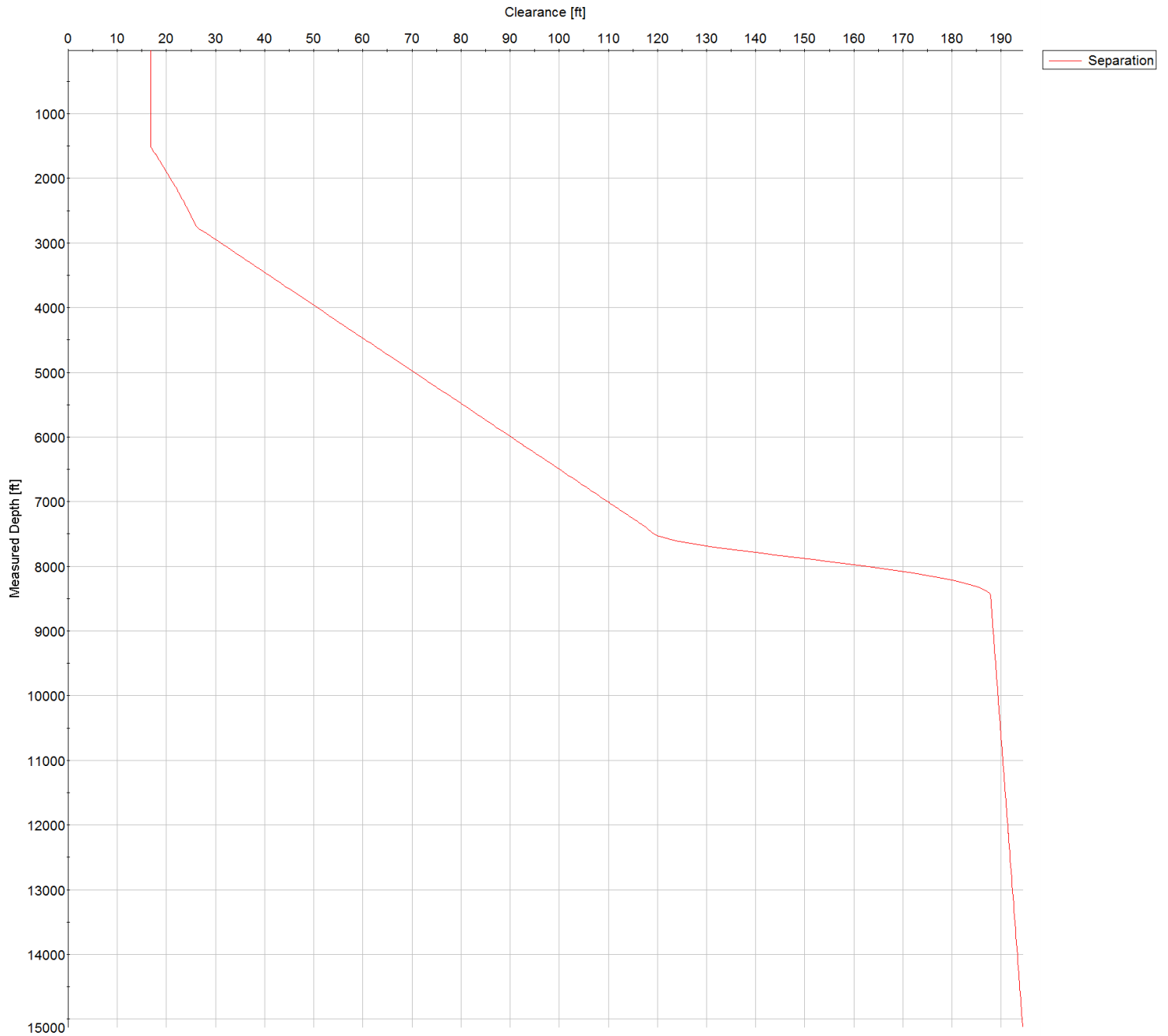
SYSDRILL
Closest Approach + Clearance Factor Summary Report
Wellbore: HOMESTEAD 3 (PWB)



All data is in Feet unless otherwise stated
Coordinates are from Slot MD's are from Rig and TVD's are from Rig (Planned Datum #1 5161.0ft above Mean Sea Level)
Vertical Section is from 0.00N 0.00E on azimuth 199.440 degrees
Prepared by Integrated Petroleum Technologies, Inc.
Date Printed: 1-Oct-2015

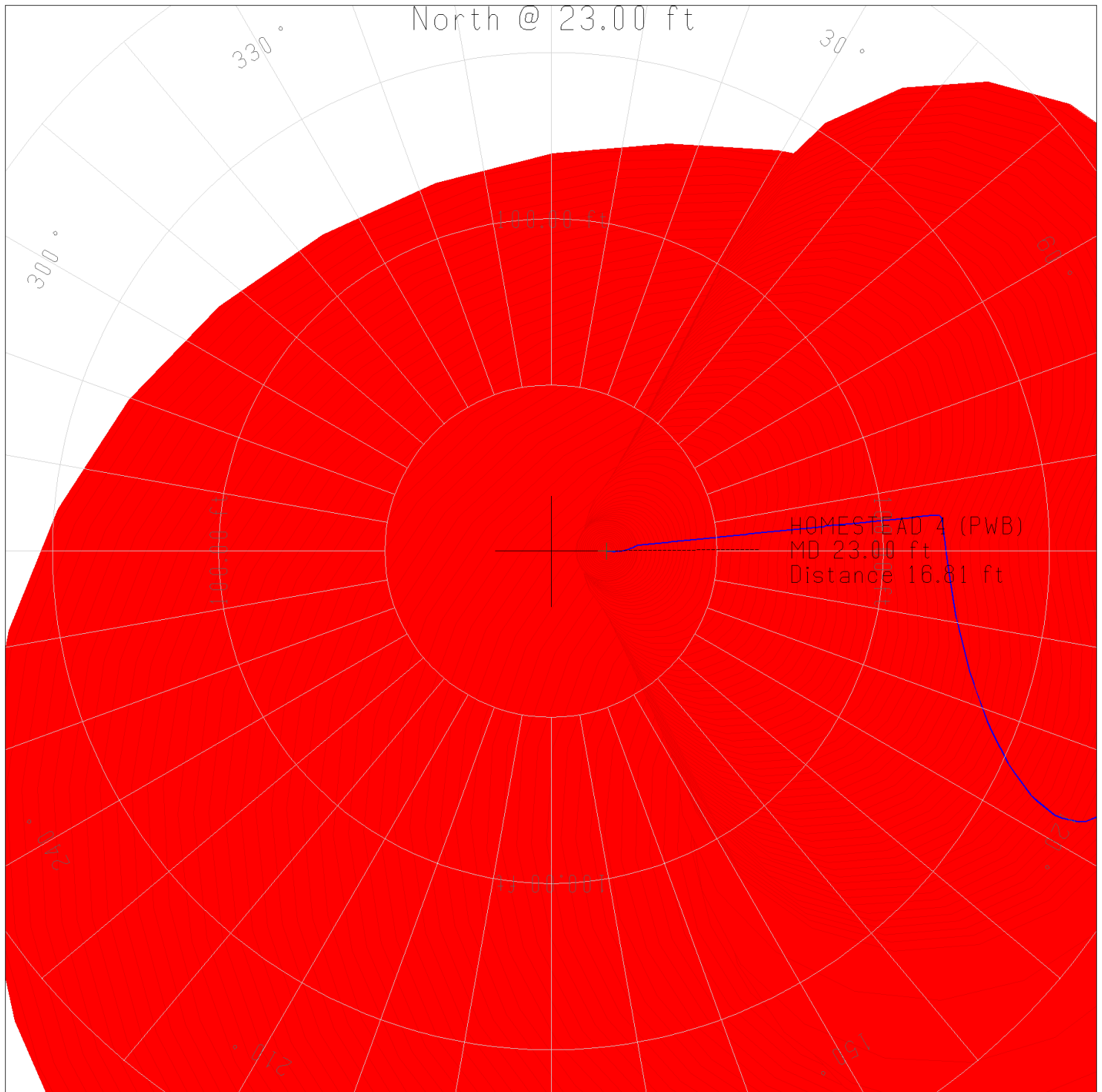


SYSDRILL
Closest Approach + Clearance Factor Summary Report
Wellbore: HOMESTEAD 3 (PWB)





SYSDRILL
Closest Approach + Clearance Factor Summary Report
Wellbore: HOMESTEAD 3 (PWB)



All data is in Feet unless otherwise stated
Coordinates are from Slot MD's are from Rig and TVD's are from Rig (Planned Datum #1 5161.0ft above Mean Sea Level)
Vertical Section is from 0.00N 0.00E on azimuth 199.440 degrees
Prepared by Integrated Petroleum Technologies, Inc.
Date Printed: 1-Oct-2015