

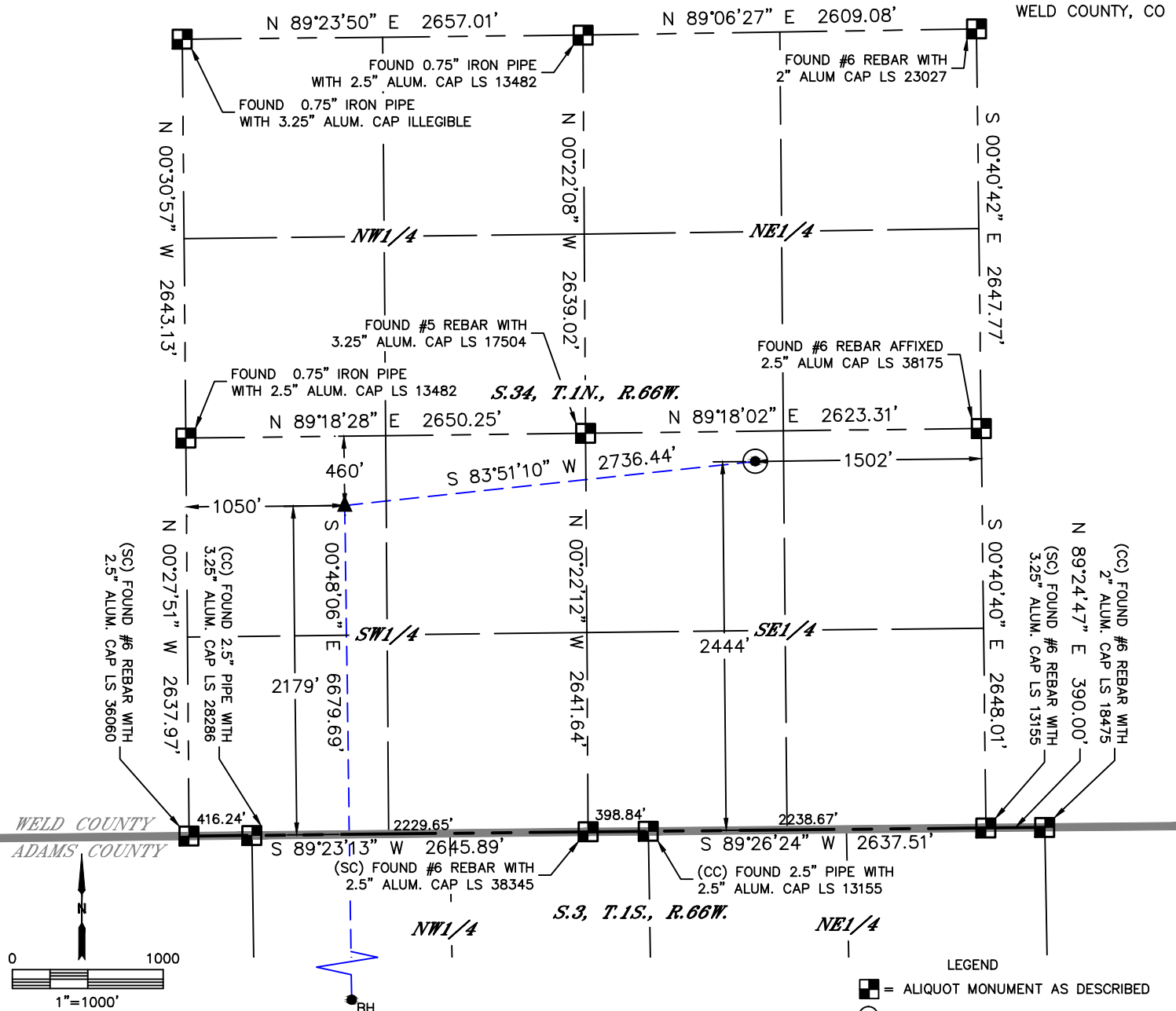


Lat40°, Inc. 6250 W. 10th Street, Unit 2, Greeley, CO 970-515-5294

WELL LOCATION CERTIFICATE

HOMESTEAD 2

SECTION: 34
TOWNSHIP: 1N
RANGE: 66W
6TH. P.M.
WELD COUNTY, CO



CLIENT: PETRO OPERATING CO.			LANDMAN: DEREK PETRIE			
INSTRUMENT OPERATOR: CHASE MILLER			SURVEY DATE: 7/24/2015		SURFACE USE: CROPLAND	
SHL FOOTAGE	SHL LAT °	SHL LONG °	SHL PDOP	SHL ELEV (FT.)	SHL 1/4/1/4	SHL S-T-R
2444 FSL 1502 FEL	40.00719	-104.75923	2.4	5139	NWSE	34-1N-66

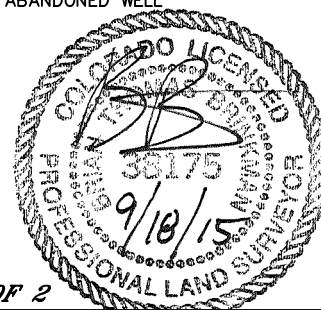
BHL FOOTAGE	BHL LAT °	BHL LONG °	BHL S-T-R	EP LAT °	EP LONG °	EP S-T-R
460 FSL 647 FWL	39.98812	-104.76881	3-1S-66	40.00645	-104.76894	34-1N-66

NOTE:

- 1) Bearings shown are Grid Bearings of the Colorado State Plane Coordinate System, North Zone, North American Datum 1983. The lineal dimensions as contained herein are based upon the "U.S. Survey Foot."
- 2) Distances to section lines measured at 90 degrees from said section lines.
- 3) Ground elevations are based on an observed GPS elevation (NAVD 1988 DATUM).
- 4) Latitude and Longitude shown are (NAD 83 DATUM).
- 5) IMPROVEMENTS: See LOCATION DRAWING for all visible improvements within 500' of oil and gas location.
- 6) This map does not represent a boundary survey.

NEAREST CULTURAL ITEMS	
BUILDING	±1001' NW
BUILDING UNIT	±1271' NW
HIGH OCCUPANCY BUILDING UNIT	±3218' SW
DESIGNATED OUTSIDE ACTIVITY AREA	5280'+
PUBLIC ROAD (ARROWHEAD DRIVE)	±1403' SW
ABOVE GROUND UTILITY	±1453' E
RAILROAD	5280'+
PROPERTY LINE	1' S, L11, B1

- LEGEND
- = ALIQUOT MONUMENT AS DESCRIBED
 - = CALCULATED POSITION
 - = SURFACE HOLE LOCATION (SHL)
 - ▲ = ENTRY POINT LOCATION (EP)
 - BH = BOTTOM HOLE LOCATION (BHL)
 - ⊙ = EXISTING WELL
 - ⊙ = ABANDONED WELL



SHEET 1 OF 2

Brian T. Brinkman—On behalf of Lat40°, Inc.
Colorado Licensed Professional Land Surveyor No. 38175
DATE: 9/18/2015
PROJECT#: 2014230

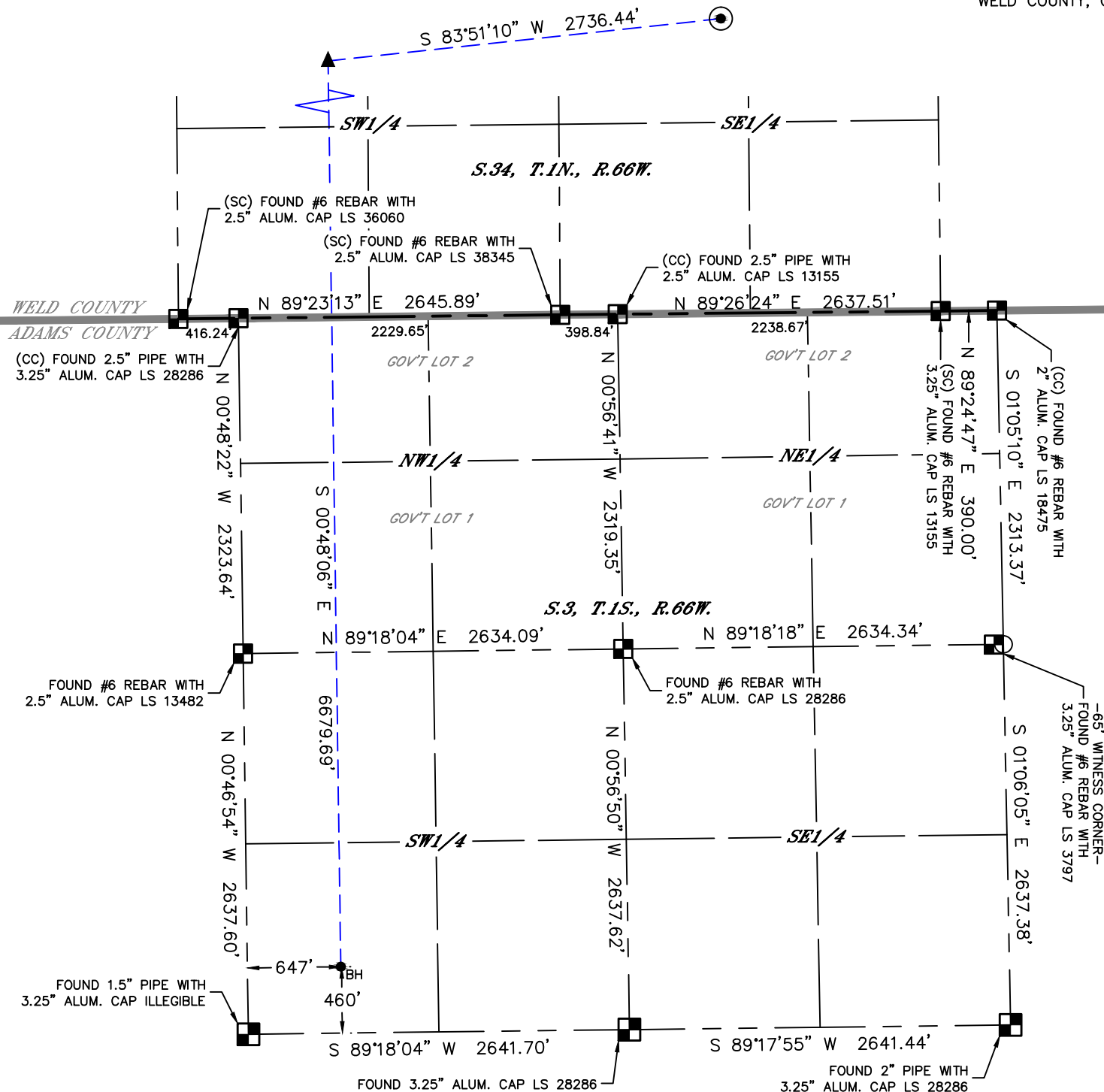


Lat40°, Inc. 6250 W. 10th Street, Unit 2, Greeley, CO 970-515-5294

WELL LOCATION CERTIFICATE

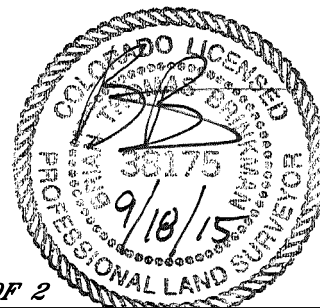
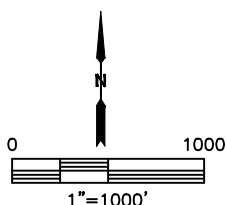
HOMESTEAD 2

SECTION: 34
TOWNSHIP: 1N
RANGE: 66W
6TH. P.M.
WELD COUNTY, CO



LEGEND

- = ALIQUOT MONUMENT AS DESCRIBED
- = CALCULATED POSITION
- ⊙ = SURFACE HOLE LOCATION (SHL)
- ▲ = ENTRY POINT LOCATION (EP)
- = BOTTOM HOLE LOCATION (BHL)
- ⊙ = EXISTING WELL
- ⊙ = ABANDONED WELL



SHEET 2 OF 2

Brian T. Brinkman—On behalf of Lat40°, Inc.
Colorado Licensed Professional Land Surveyor No. 38175
DATE: 9/18/2015
PROJECT#: 2014230

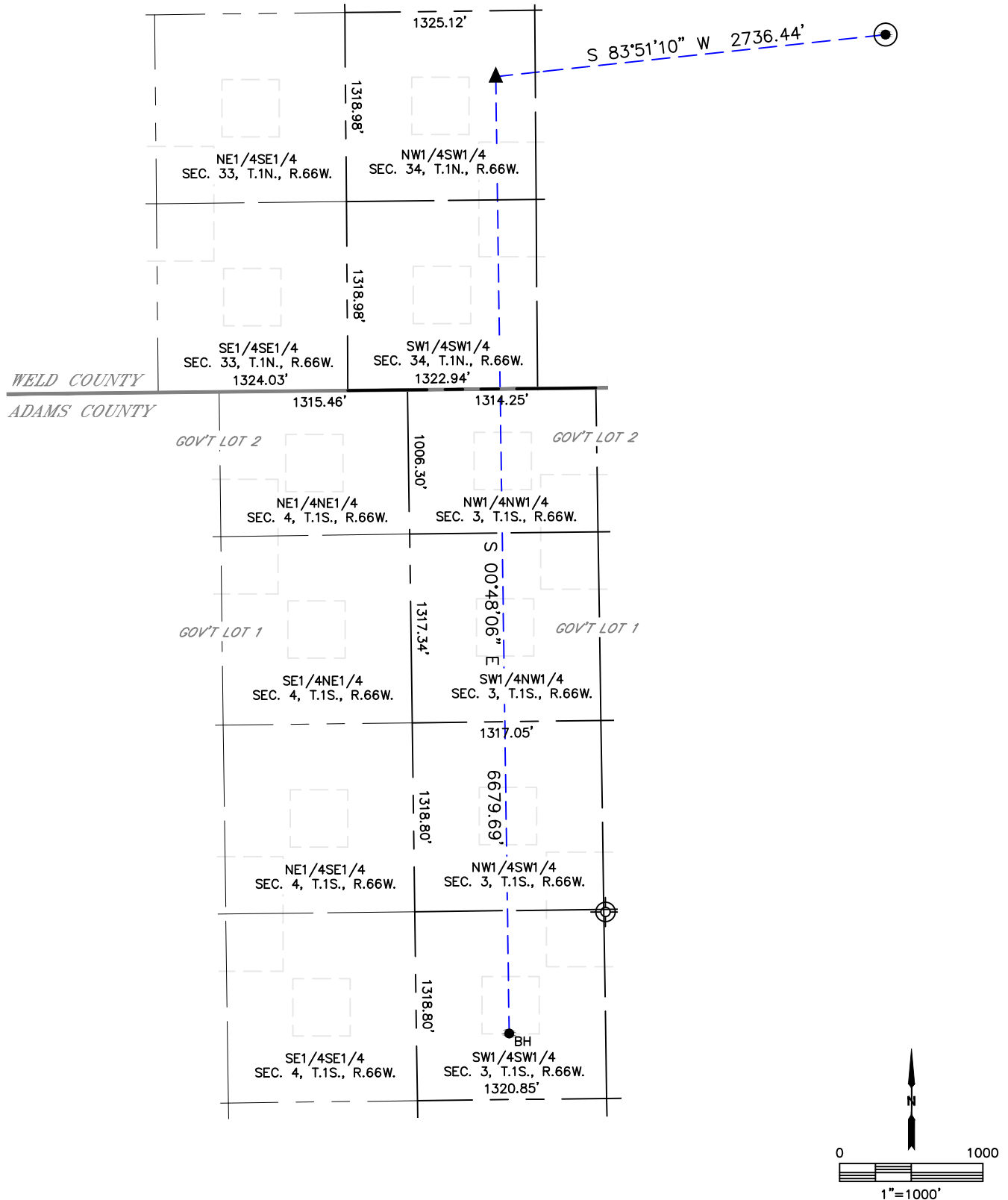


Lat40°, Inc. 6250 W. 10th Street, Unit 2, Greeley, CO 970-515-5294

SITE SKETCH

HOMESTEAD 2

SECTION: 34
TOWNSHIP: 1N
RANGE: 66W
6TH. P.M.
WELD COUNTY, CO



NOTE: NO EXISTING WELLS ADJACENT TO PROPOSED WELL BORE.

DATE: 9/18/2015
PROJECT#: 2014230