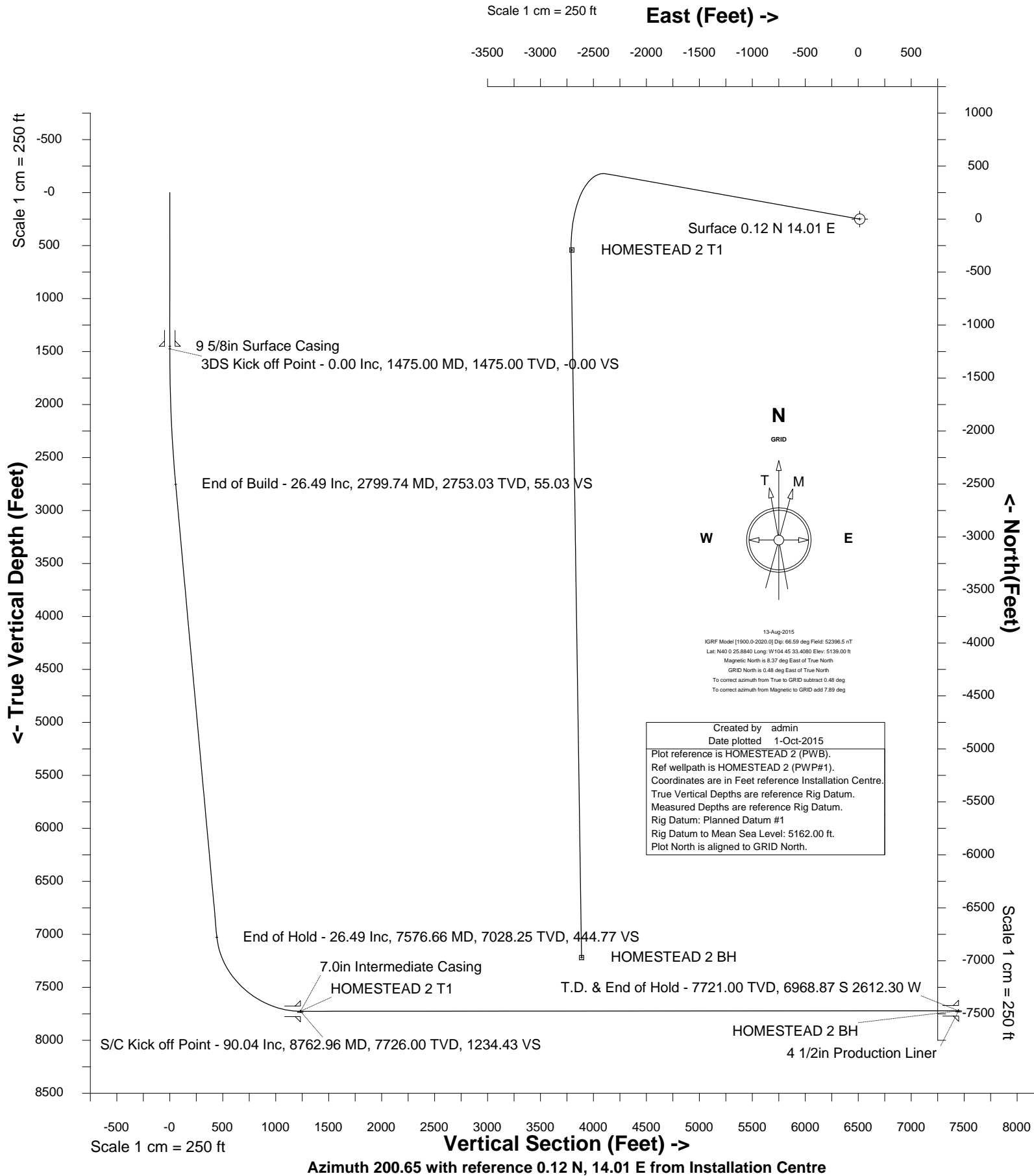


Wellbore HOMESTEAD 2 (PWB)





SYSDRILL
Well Design Combined Report
Wellbore: HOMESTEAD 2 (PWB)

Wellhead Details							
Name	Latitude	Longitude	Northing	Easting	North	East	Slot Elevation Above Ground
HOMESTEAD 2	40.00719000	-104.75923000	1246332.6905	3207505.0824	0.12N	14.01E	0.00

Declination		
Date	Source	Time
13-Aug-2015	IGRF Model [1900.0-2020.0]	08:38

Installation Details						
Name	Installation Position (Latitude)	Installation Position (Longitude)	Northing	Easting	Coord System Name	North Alignment
Homestead	40.00719000	-104.75928000	1246332.5735	3207491.0767	CO83-NF on NORTH AMERICAN DATUM 1983 datum	Grid

Summary Wellpath									
MD[ft]	Inc[deg]	Azi[deg]	TVD[ft]	North[ft]	East[ft]	Dogleg [deg/100ft]	Vertical Section[ft]	Northing	Easting
23.00	0.00	0.000	23.00	0.00N	0.00E		0.00	1246332.69	3207505.08
1475.00	0.00	280.110	1475.00	0.00N	0.00E	==>	0.00	1246332.69	3207505.08
2799.74	26.49	280.110	2753.03	52.82N	296.20W	2.00	55.03	1246385.51	3207208.89
7576.66	26.49	280.110	7028.25	426.95N	2394.16W	==>	444.77	1246759.62	3205111.01
8762.96	90.04	179.150	7726.00	292.14S	2725.29W	8.00	1234.43	1246040.56	3204779.89
15440.55	90.04	179.150	7721.00	6968.99S	2626.31W	==>	7447.44	1239363.95	3204878.87

Interpolated Wellpath								
MD[ft]	Inc[deg]	Azi[deg]	TVD[ft]	North[ft]	East[ft]	Dogleg [deg/100ft]	Vertical Section[ft]	All Station Comments
0.00	0.00	0.000	0.00	0.00N	0.00E		0.00	Rig Datum Slot Datum
23.00	0.00	0.000	23.00	0.00N	0.00E	==>	0.00	
100.00	0.00	0.000	100.00	0.00N	0.00E	==>	0.00	
200.00	0.00	0.000	200.00	0.00N	0.00E	==>	0.00	
300.00	0.00	0.000	300.00	0.00N	0.00E	==>	0.00	
400.00	0.00	0.000	400.00	0.00N	0.00E	==>	0.00	
500.00	0.00	0.000	500.00	0.00N	0.00E	==>	0.00	
600.00	0.00	0.000	600.00	0.00N	0.00E	==>	0.00	
700.00	0.00	0.000	700.00	0.00N	0.00E	==>	0.00	
800.00	0.00	0.000	800.00	0.00N	0.00E	==>	0.00	
900.00	0.00	0.000	900.00	0.00N	0.00E	==>	0.00	
1000.00	0.00	0.000	1000.00	0.00N	0.00E	==>	0.00	
1100.00	0.00	0.000	1100.00	0.00N	0.00E	==>	0.00	
1200.00	0.00	0.000	1200.00	0.00N	0.00E	==>	0.00	
1300.00	0.00	0.000	1300.00	0.00N	0.00E	==>	0.00	
1400.00	0.00	0.000	1400.00	0.00N	0.00E	==>	0.00	9 5/8in Surface Casing 3DS Kick off Point
1450.00	0.00	0.000	1450.00	0.00N	0.00E	==>	0.00	
1475.00	0.00	280.110	1475.00	0.00N	0.00E	==>	0.00	
1500.00	0.50	280.110	1500.00	0.02N	0.11W	2.00	0.02	
1600.00	2.50	280.110	1599.96	0.48N	2.68W	2.00	0.50	
1700.00	4.50	280.110	1699.77	1.55N	8.69W	2.00	1.62	
1800.00	6.50	280.110	1799.30	3.23N	18.13W	2.00	3.37	
1900.00	8.50	280.110	1898.44	5.52N	30.98W	2.00	5.76	
2000.00	10.50	280.110	1997.07	8.42N	47.23W	2.00	8.77	
2100.00	12.50	280.110	2095.05	11.92N	66.85W	2.00	12.42	
2200.00	14.50	280.110	2192.29	16.02N	89.83W	2.00	16.69	
2300.00	16.50	280.110	2288.64	20.71N	116.14W	2.00	21.58	
2400.00	18.50	280.110	2384.01	25.99N	145.74W	2.00	27.08	
2500.00	20.50	280.110	2478.27	31.85N	178.60W	2.00	33.18	
2600.00	22.50	280.110	2571.31	38.28N	214.68W	2.00	39.88	
2700.00	24.50	280.110	2663.01	45.28N	253.94W	2.00	47.17	End of Build
2799.74	26.49	280.110	2753.03	52.82N	296.20W	2.00	55.03	
2800.00	26.49	280.110	2753.26	52.84N	296.32W	==>	55.05	
2900.00	26.49	280.110	2842.76	60.67N	340.23W	==>	63.21	
3000.00	26.49	280.110	2932.26	68.51N	384.15W	==>	71.37	
3100.00	26.49	280.110	3021.76	76.34N	428.07W	==>	79.52	

All data is in Feet unless otherwise stated
Coordinates are from Slot MD's are from Rig and TVD's are from Rig (Planned Datum #1 5162.0ft above Mean Sea Level)
Vertical Section is from 0.00N 0.00E on azimuth 200.650 degrees
Bottom hole distance is 7447.44 Feet on azimuth 200.65 degrees from Wellhead
Calculation method uses Minimum Curvature method
Prepared by Integrated Petroleum Technologies, Inc.
Date Printed: 1-Oct-2015



SYSDRILL
Well Design Combined Report
Wellbore: HOMESTEAD 2 (PWB)

Interpolated Wellpath								
MD[ft]	Inc[deg]	Azi[deg]	TVD[ft]	North[ft]	East[ft]	Dogleg [deg/100ft]	Vertical Section[ft]	All Station Comments
3200.00	26.49	280.110	3111.25	84.17N	471.99W	==>	87.68	
3300.00	26.49	280.110	3200.75	92.00N	515.91W	==>	95.84	
3400.00	26.49	280.110	3290.25	99.83N	559.83W	==>	104.00	
3500.00	26.49	280.110	3379.75	107.67N	603.75W	==>	112.16	
3600.00	26.49	280.110	3469.24	115.50N	647.67W	==>	120.32	
3700.00	26.49	280.110	3558.74	123.33N	691.58W	==>	128.48	
3800.00	26.49	280.110	3648.24	131.16N	735.50W	==>	136.64	
3900.00	26.49	280.110	3737.74	138.99N	779.42W	==>	144.80	
4000.00	26.49	280.110	3827.23	146.83N	823.34W	==>	152.96	
4100.00	26.49	280.110	3916.73	154.66N	867.26W	==>	161.11	
4200.00	26.49	280.110	4006.23	162.49N	911.18W	==>	169.27	
4300.00	26.49	280.110	4095.73	170.32N	955.10W	==>	177.43	
4400.00	26.49	280.110	4185.22	178.15N	999.02W	==>	185.59	
4500.00	26.49	280.110	4274.72	185.98N	1042.93W	==>	193.75	
4600.00	26.49	280.110	4364.22	193.82N	1086.85W	==>	201.91	
4700.00	26.49	280.110	4453.72	201.65N	1130.77W	==>	210.07	
4800.00	26.49	280.110	4543.21	209.48N	1174.69W	==>	218.23	
4900.00	26.49	280.110	4632.71	217.31N	1218.61W	==>	226.39	
5000.00	26.49	280.110	4722.21	225.14N	1262.53W	==>	234.55	
5100.00	26.49	280.110	4811.71	232.98N	1306.45W	==>	242.70	
5200.00	26.49	280.110	4901.20	240.81N	1350.37W	==>	250.86	
5300.00	26.49	280.110	4990.70	248.64N	1394.28W	==>	259.02	
5400.00	26.49	280.110	5080.20	256.47N	1438.20W	==>	267.18	
5500.00	26.49	280.110	5169.70	264.30N	1482.12W	==>	275.34	
5600.00	26.49	280.110	5259.19	272.14N	1526.04W	==>	283.50	
5700.00	26.49	280.110	5348.69	279.97N	1569.96W	==>	291.66	
5800.00	26.49	280.110	5438.19	287.80N	1613.88W	==>	299.82	
5900.00	26.49	280.110	5527.69	295.63N	1657.80W	==>	307.98	
6000.00	26.49	280.110	5617.18	303.46N	1701.72W	==>	316.13	
6100.00	26.49	280.110	5706.68	311.30N	1745.63W	==>	324.29	
6200.00	26.49	280.110	5796.18	319.13N	1789.55W	==>	332.45	
6300.00	26.49	280.110	5885.68	326.96N	1833.47W	==>	340.61	
6400.00	26.49	280.110	5975.17	334.79N	1877.39W	==>	348.77	
6500.00	26.49	280.110	6064.67	342.62N	1921.31W	==>	356.93	
6600.00	26.49	280.110	6154.17	350.46N	1965.23W	==>	365.09	
6700.00	26.49	280.110	6243.67	358.29N	2009.15W	==>	373.25	
6800.00	26.49	280.110	6333.16	366.12N	2053.07W	==>	381.41	
6900.00	26.49	280.110	6422.66	373.95N	2096.98W	==>	389.57	
7000.00	26.49	280.110	6512.16	381.78N	2140.90W	==>	397.72	
7100.00	26.49	280.110	6601.66	389.62N	2184.82W	==>	405.88	
7200.00	26.49	280.110	6691.15	397.45N	2228.74W	==>	414.04	
7300.00	26.49	280.110	6780.65	405.28N	2272.66W	==>	422.20	
7400.00	26.49	280.110	6870.15	413.11N	2316.58W	==>	430.36	
7500.00	26.49	280.110	6959.65	420.94N	2360.50W	==>	438.52	
7576.66	26.49	280.110	7028.25	426.95N	2394.16W	==>	444.77	End of Hold
7600.00	26.24	275.950	7049.17	428.40N	2404.42W	8.00	447.04	
7700.00	26.52	257.890	7138.90	426.00N	2448.31W	8.00	464.76	
7800.00	28.94	241.440	7227.54	409.72N	2491.46W	8.00	495.20	
7900.00	33.02	228.030	7313.36	379.89N	2533.03W	8.00	537.78	
8000.00	38.23	217.570	7394.69	337.07N	2572.22W	8.00	591.67	7.0in Intermediate Casing S/C Kick off Point/Target, HOMESTEAD 2 T1
8100.00	44.17	209.420	7469.95	282.11N	2608.26W	8.00	655.81	
8200.00	50.58	202.890	7537.67	216.07N	2640.46W	8.00	728.96	
8300.00	57.29	197.490	7596.54	140.24N	2668.17W	8.00	809.69	
8400.00	64.20	192.860	7645.40	56.09N	2690.87W	8.00	896.44	
8500.00	71.23	188.740	7683.32	34.73S	2708.12W	8.00	987.51	
8600.00	78.35	184.960	7709.54	130.47S	2719.57W	8.00	1081.13	
8700.00	85.52	181.370	7723.56	229.25S	2725.00W	8.00	1175.48	
8762.00	89.97	179.180	7726.00	291.18S	2725.30W	8.00	1233.54	
8762.96	90.04	179.150	7726.00	292.14S	2725.29W	8.00	1234.43	
8800.00	90.04	179.150	7725.97	329.17S	2724.74W	==>	1268.90	
8900.00	90.04	179.150	7725.90	429.16S	2723.26W	==>	1361.94	
9000.00	90.04	179.150	7725.82	529.15S	2721.77W	==>	1454.98	

All data is in Feet unless otherwise stated
Coordinates are from Slot MD's are from Rig and TVD's are from Rig (Planned Datum #1 5162.0ft above Mean Sea Level)
Vertical Section is from 0.00N 0.00E on azimuth 200.650 degrees
Bottom hole distance is 7447.44 Feet on azimuth 200.65 degrees from Wellhead
Calculation method uses Minimum Curvature method
Prepared by Integrated Petroleum Technologies, Inc.
Date Printed: 1-Oct-2015



SYSDRILL
Well Design Combined Report
Wellbore: HOMESTEAD 2 (PWB)

Interpolated Wellpath								
MD[ft]	Inc[deg]	Azi[deg]	TVD[ft]	North[ft]	East[ft]	Dogleg [deg/100ft]	Vertical Section[ft]	All Station Comments
9100.00	90.04	179.150	7725.75	629.14S	2720.29W	==>	1548.02	
9200.00	90.04	179.150	7725.67	729.13S	2718.81W	==>	1641.07	
9300.00	90.04	179.150	7725.60	829.12S	2717.33W	==>	1734.11	
9400.00	90.04	179.150	7725.52	929.11S	2715.84W	==>	1827.15	
9500.00	90.04	179.150	7725.45	1029.10S	2714.36W	==>	1920.19	
9600.00	90.04	179.150	7725.37	1129.09S	2712.88W	==>	2013.24	
9700.00	90.04	179.150	7725.30	1229.08S	2711.40W	==>	2106.28	
9800.00	90.04	179.150	7725.22	1329.06S	2709.92W	==>	2199.32	
9900.00	90.04	179.150	7725.15	1429.05S	2708.43W	==>	2292.37	
10000.00	90.04	179.150	7725.07	1529.04S	2706.95W	==>	2385.41	
10100.00	90.04	179.150	7725.00	1629.03S	2705.47W	==>	2478.45	
10200.00	90.04	179.150	7724.92	1729.02S	2703.99W	==>	2571.49	
10300.00	90.04	179.150	7724.85	1829.01S	2702.50W	==>	2664.54	
10400.00	90.04	179.150	7724.77	1929.00S	2701.02W	==>	2757.58	
10500.00	90.04	179.150	7724.70	2028.99S	2699.54W	==>	2850.62	
10600.00	90.04	179.150	7724.62	2128.98S	2698.06W	==>	2943.66	
10700.00	90.04	179.150	7724.55	2228.97S	2696.58W	==>	3036.71	
10800.00	90.04	179.150	7724.47	2328.95S	2695.09W	==>	3129.75	
10900.00	90.04	179.150	7724.40	2428.94S	2693.61W	==>	3222.79	
11000.00	90.04	179.150	7724.32	2528.93S	2692.13W	==>	3315.83	
11100.00	90.04	179.150	7724.25	2628.92S	2690.65W	==>	3408.88	
11200.00	90.04	179.150	7724.18	2728.91S	2689.16W	==>	3501.92	
11300.00	90.04	179.150	7724.10	2828.90S	2687.68W	==>	3594.96	
11400.00	90.04	179.150	7724.03	2928.89S	2686.20W	==>	3688.01	
11500.00	90.04	179.150	7723.95	3028.88S	2684.72W	==>	3781.05	
11600.00	90.04	179.150	7723.88	3128.87S	2683.24W	==>	3874.09	
11700.00	90.04	179.150	7723.80	3228.86S	2681.75W	==>	3967.13	
11800.00	90.04	179.150	7723.73	3328.84S	2680.27W	==>	4060.18	
11900.00	90.04	179.150	7723.65	3428.83S	2678.79W	==>	4153.22	
12000.00	90.04	179.150	7723.58	3528.82S	2677.31W	==>	4246.26	
12100.00	90.04	179.150	7723.50	3628.81S	2675.82W	==>	4339.30	
12200.00	90.04	179.150	7723.43	3728.80S	2674.34W	==>	4432.35	
12300.00	90.04	179.150	7723.35	3828.79S	2672.86W	==>	4525.39	
12400.00	90.04	179.150	7723.28	3928.78S	2671.38W	==>	4618.43	
12500.00	90.04	179.150	7723.20	4028.77S	2669.90W	==>	4711.47	
12600.00	90.04	179.150	7723.13	4128.76S	2668.41W	==>	4804.52	
12700.00	90.04	179.150	7723.05	4228.74S	2666.93W	==>	4897.56	
12800.00	90.04	179.150	7722.98	4328.73S	2665.45W	==>	4990.60	
12900.00	90.04	179.150	7722.90	4428.72S	2663.97W	==>	5083.65	
13000.00	90.04	179.150	7722.83	4528.71S	2662.48W	==>	5176.69	
13100.00	90.04	179.150	7722.75	4628.70S	2661.00W	==>	5269.73	
13200.00	90.04	179.150	7722.68	4728.69S	2659.52W	==>	5362.77	
13300.00	90.04	179.150	7722.60	4828.68S	2658.04W	==>	5455.82	
13400.00	90.04	179.150	7722.53	4928.67S	2656.56W	==>	5548.86	
13500.00	90.04	179.150	7722.45	5028.66S	2655.07W	==>	5641.90	
13600.00	90.04	179.150	7722.38	5128.65S	2653.59W	==>	5734.94	
13700.00	90.04	179.150	7722.30	5228.63S	2652.11W	==>	5827.99	
13800.00	90.04	179.150	7722.23	5328.62S	2650.63W	==>	5921.03	
13900.00	90.04	179.150	7722.15	5428.61S	2649.15W	==>	6014.07	
14000.00	90.04	179.150	7722.08	5528.60S	2647.66W	==>	6107.11	
14100.00	90.04	179.150	7722.00	5628.59S	2646.18W	==>	6200.16	
14200.00	90.04	179.150	7721.93	5728.58S	2644.70W	==>	6293.20	
14300.00	90.04	179.150	7721.85	5828.57S	2643.22W	==>	6386.24	
14400.00	90.04	179.150	7721.78	5928.56S	2641.73W	==>	6479.29	
14500.00	90.04	179.150	7721.70	6028.55S	2640.25W	==>	6572.33	
14600.00	90.04	179.150	7721.63	6128.54S	2638.77W	==>	6665.37	
14700.00	90.04	179.150	7721.55	6228.52S	2637.29W	==>	6758.41	
14800.00	90.04	179.150	7721.48	6328.51S	2635.81W	==>	6851.46	
14900.00	90.04	179.150	7721.40	6428.50S	2634.32W	==>	6944.50	
15000.00	90.04	179.150	7721.33	6528.49S	2632.84W	==>	7037.54	
15100.00	90.04	179.150	7721.25	6628.48S	2631.36W	==>	7130.58	

All data is in Feet unless otherwise stated
Coordinates are from Slot MD's are from Rig and TVD's are from Rig (Planned Datum #1 5162.0ft above Mean Sea Level)
Vertical Section is from 0.00N 0.00E on azimuth 200.650 degrees
Bottom hole distance is 7447.44 Feet on azimuth 200.65 degrees from Wellhead
Calculation method uses Minimum Curvature method
Prepared by Integrated Petroleum Technologies, Inc.
Date Printed: 1-Oct-2015



SYSDRILL
Well Design Combined Report
Wellbore: HOMESTEAD 2 (PWB)

Interpolated Wellpath								
MD[ft]	Inc[deg]	Azi[deg]	TVD[ft]	North[ft]	East[ft]	Dogleg [deg/100ft]	Vertical Section[ft]	All Station Comments
15200.00	90.04	179.150	7721.18	6728.47S	2629.88W	==>	7223.63	
15300.00	90.04	179.150	7721.11	6828.46S	2628.39W	==>	7316.67	End of Hold/Target, 4 1/2in Production Liner, HOMESTEAD 2 BH
15400.00	90.04	179.150	7721.03	6928.45S	2626.91W	==>	7409.71	
15440.55	90.04	179.150	7721.00	6968.99S	2626.31W	==>	7447.44	

All data is in Feet unless otherwise stated
Coordinates are from Slot MD's are from Rig and TVD's are from Rig (Planned Datum #1 5162.0ft above Mean Sea Level)
Vertical Section is from 0.00N 0.00E on azimuth 200.650 degrees
Bottom hole distance is 7447.44 Feet on azimuth 200.65 degrees from Wellhead
Calculation method uses Minimum Curvature method
Prepared by Integrated Petroleum Technologies, Inc.
Date Printed: 1-Oct-2015



SYSDRILL
Well Design Combined Report
Wellbore: HOMESTEAD 2 (PWB)

Hole Sections

Diameter [in]	Start MD[ft]	Start TVD[ft]	Start North[ft]	Start East[ft]	End MD[ft]	End TVD[ft]	End North[ft]	End East[ft]
13 1/2	23.00	23.00	0.00N	0.00E	1450.00	1450.00	0.00N	0.00E
8 3/4	1450.00	1450.00	0.00N	0.00E	8762.00	7726.00	291.18S	2725.30W
6 1/8	8762.00	7726.00	291.18S	2725.30W	15440.55	7721.00	6968.99S	2626.31W

Casings

Name	Top MD[ft]	Top TVD[ft]	Top North[ft]	Top East[ft]	Shoe MD[ft]	Shoe TVD[ft]	Shoe North[ft]	Shoe East[ft]
9 5/8in Surface Casing	23.00	23.00	0.00N	0.00E	1450.00	1450.00	0.00N	0.00E
7.0in Intermediate Casing	23.00	23.00	0.00N	0.00E	8762.00	7726.00	291.18S	2725.30W
4 1/2in Production Liner	7645.00	7089.57	429.04N	2424.21W	15440.55	7721.00	6968.99S	2626.31W

Targets

Name	North[ft]	East[ft]	TVD[ft]	Latitude	Longitude	Northing	Easting
HOMESTEAD 2 BH	6968.99S	2626.31W	7721.00	39.98812000	-104.76881000	1239363.95	3204878.87
HOMESTEAD 2 T1	292.14S	2717.79W	7726.00	40.00645000	-104.76894000	1246040.56	3204787.39

Survey Tool Program

Reference	Survey Name	MD[ft]	TVD[ft]	Survey Tool	Error Model
399748	Planned	15440.55	7721.00	ISCWSA MWD	Rev 3 + Fixed Rig + Rotating

Notes

All data is in Feet unless otherwise stated
Coordinates are from Slot MD's are from Rig and TVD's are from Rig (Planned Datum #1 5162.0ft above Mean Sea Level)
Vertical Section is from 0.00N 0.00E on azimuth 200.650 degrees
Bottom hole distance is 7447.44 Feet on azimuth 200.65 degrees from Wellhead
Calculation method uses Minimum Curvature method
Prepared by Integrated Petroleum Technologies, Inc.
Date Printed: 1-Oct-2015



SYSDRILL
Closest Approach + Clearance Factor Summary Report
Wellbore: HOMESTEAD 2 (PWB)

Ellipse separations are reported ONLY if BOTH wells have uncertainty data
Only Depth and Magnetic Reference Field error terms are correlated across tie points
Scan limit is calculated on CENTRE to CENTRE distance
Summary data uses Closest Approach clearance calculation for all minima
Hole size/Casings ARE included
Hole size/Casings are NOT subtracted from Centre-Centre distance
Confidence limit of 95.00% / 2.80 SD.

Wellbore		
Name	Created	Last Revised
HOMESTEAD 2 (PWB)	17-Aug-2015	23-Sep-2015

Well		
Name	Government ID	Last Revised
HOMESTEAD 2		17-Aug-2015

Slot						
Name	Latitude	Longitude	Grid Northing	Grid Easting	North	East
HOMESTEAD 2	40.00719000	-104.75923000	1246332.6905	3207505.0824	0.12N	14.01E

Installation						
Name	Installation Position (Latitude)	Installation Position (Longitude)	Easting	Northing	Coord System Name	North Alignment
Homestead	40.00719000	-104.75928000	3207491.0767	1246332.5735	CO83-NF on NORTH AMERICAN DATUM 1983 datum	Grid

Clearance Summary							
Offset WellName	Separation [ft]	MD[ft]	Diverging From[ft]	Ellipse Separation [ft]	Ellipse MD[ft]	Clearance Factor	Clearance MD[ft]
HOMESTEAD 1	14.01	1450.17	8725.06	4.64	1450.00	1.06	15440.55
HOMESTEAD 3	17.20	1475.00	15440.55	-30.84	15440.55	0.89	15440.55
HOMESTEAD 4	33.81	1475.00	15440.55	24.55	1433.76	1.43	15440.55
HOMESTEAD 5	50.56	1475.00	15440.47	41.29	1433.76	1.53	15440.47
HOMESTEAD 6	64.53	1475.00	15440.55	55.27	1433.76	2.17	15440.55
HOMESTEAD 7	81.32	1475.00	15440.55	72.06	1433.76	2.75	15440.55
HOMESTEAD 8	98.11	1475.00	15440.55	88.85	1433.76	3.08	15440.55
HOMESTEAD 9	112.11	1475.00	15440.55	102.85	1433.76	3.67	15440.55
HOMESTEAD 10	128.91	1475.00	15440.55	119.65	1433.76	4.23	15440.55
HOMESTEAD 11	145.72	1475.00	15440.55	136.45	1433.76	4.62	15440.55
HOMESTEAD 12	162.52	1475.00	15440.55	153.26	1433.76	5.19	15440.55
HOMESTEAD 13	383.39	2024.31	15440.55	370.77	2040.72	5.75	15440.55
HOMESTEAD 14	406.21	1482.97	15440.55	394.69	1942.29	6.10	15440.55
HOMESTEAD 15	423.02	1475.00	15440.55	413.52	1893.08	6.61	15440.55
HOMESTEAD 16	439.83	1475.00	15440.55	430.58	1433.76	7.09	15440.55
HOMESTEAD 17	453.83	1475.00	15440.55	444.58	1433.76	7.46	15440.55
HOMESTEAD 18	470.64	1475.00	15440.55	461.39	1433.76	7.95	15440.55
HOMESTEAD 19	487.45	1475.00	15440.55	478.20	1433.76	8.43	15440.55
HOMESTEAD 20	504.25	1475.00	15440.55	495.01	1433.76	8.81	15440.55
HOMESTEAD 21	518.26	1475.00	15440.55	509.01	1433.76	9.30	15440.55
HOMESTEAD 22	535.07	1475.00	15440.55	525.82	1433.76	9.78	15440.55
HOMESTEAD 23	551.88	1475.00	15440.55	542.63	1433.76	10.16	15440.55
HOMESTEAD 24	565.88	1458.00	15440.55	556.64	1433.76	10.64	15440.55

All data is in Feet unless otherwise stated
Coordinates are from Slot MD's are from Rig and TVD's are from Rig (Planned Datum #1 5162.0ft above Mean Sea Level)
Vertical Section is from 0.00N 0.00E on azimuth 200.650 degrees
Prepared by Integrated Petroleum Technologies, Inc.
Date Printed: 1-Oct-2015

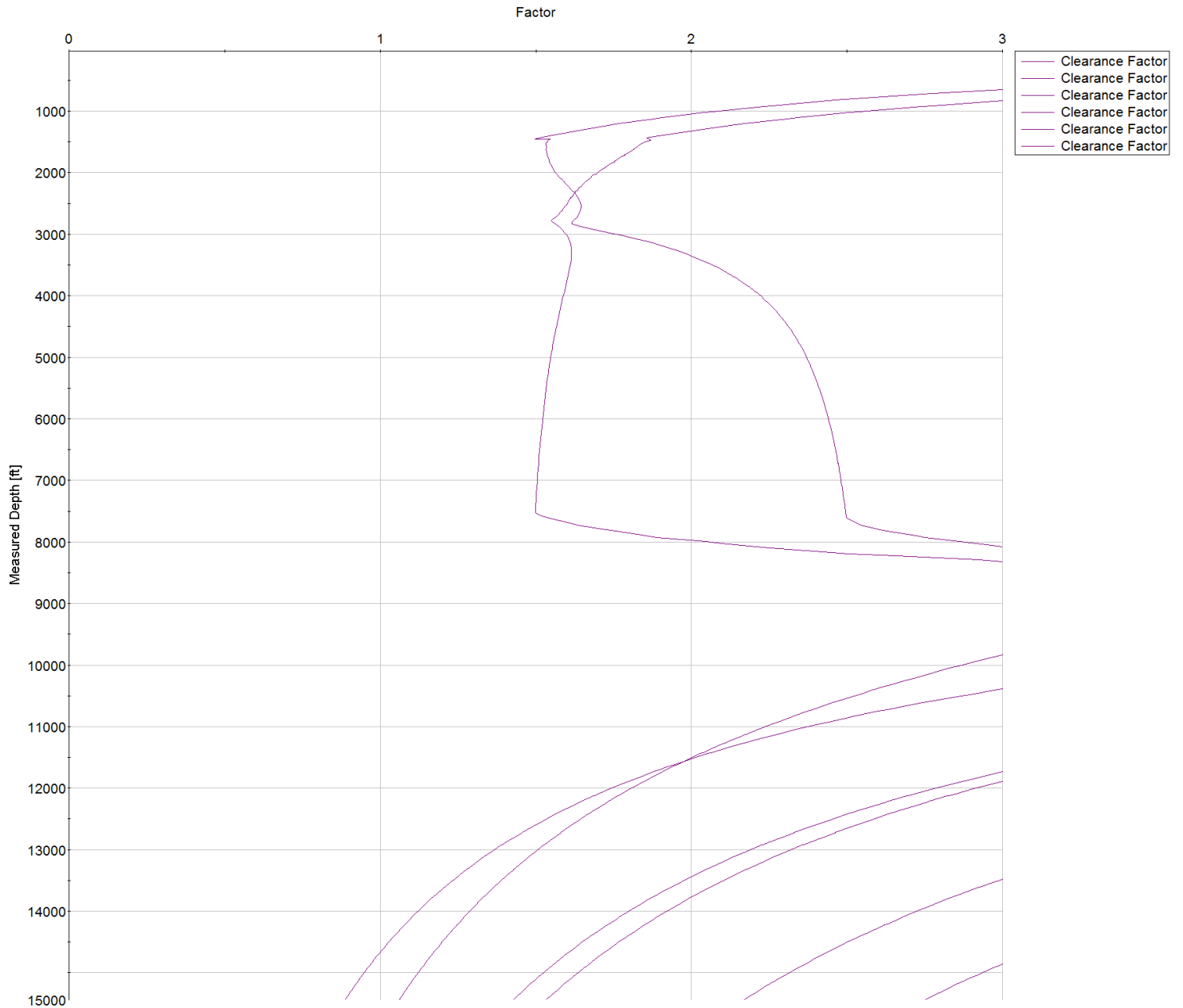


SYSDRILL
Closest Approach + Clearance Factor Summary Report
Wellbore: HOMESTEAD 2 (PWB)

Clearance Summary							
Offset WellName	Separation [ft]	MD[ft]	Diverging From[ft]	Ellipse Separation [ft]	Ellipse MD[ft]	Clearance Factor	Clearance MD[ft]
BERGMAN #2	602.64	14559.27	14559.27	420.47	14524.31	3.28	14475.10
WILLARD, JOHN W. GAS UNIT #1	1144.40	2975.76	2975.76	1114.44	3057.78	27.57	4681.79
VISTA USX #WW33-08D	1936.42	8274.31	8274.31	1865.69	8290.72	24.26	9143.73
UPRR 50 PAN AM M #1	2871.63	1475.00	9950.50	2855.71	1499.38	57.42	12572.21
BERGMAN #1	3351.71	1475.00	11644.57	3335.88	1515.78	34.03	12473.79
BEN STEVENSON GAS UNIT #1	3627.60	15440.55	15440.55	3421.90	15440.55	17.64	15440.55
BRIGHTON COMPANY #1	6257.01	14286.39	14286.39	6082.20	14376.67	33.61	15440.55
SHAW A #1	7188.78	15440.55	15440.55	6988.75	15440.55	35.94	15440.55

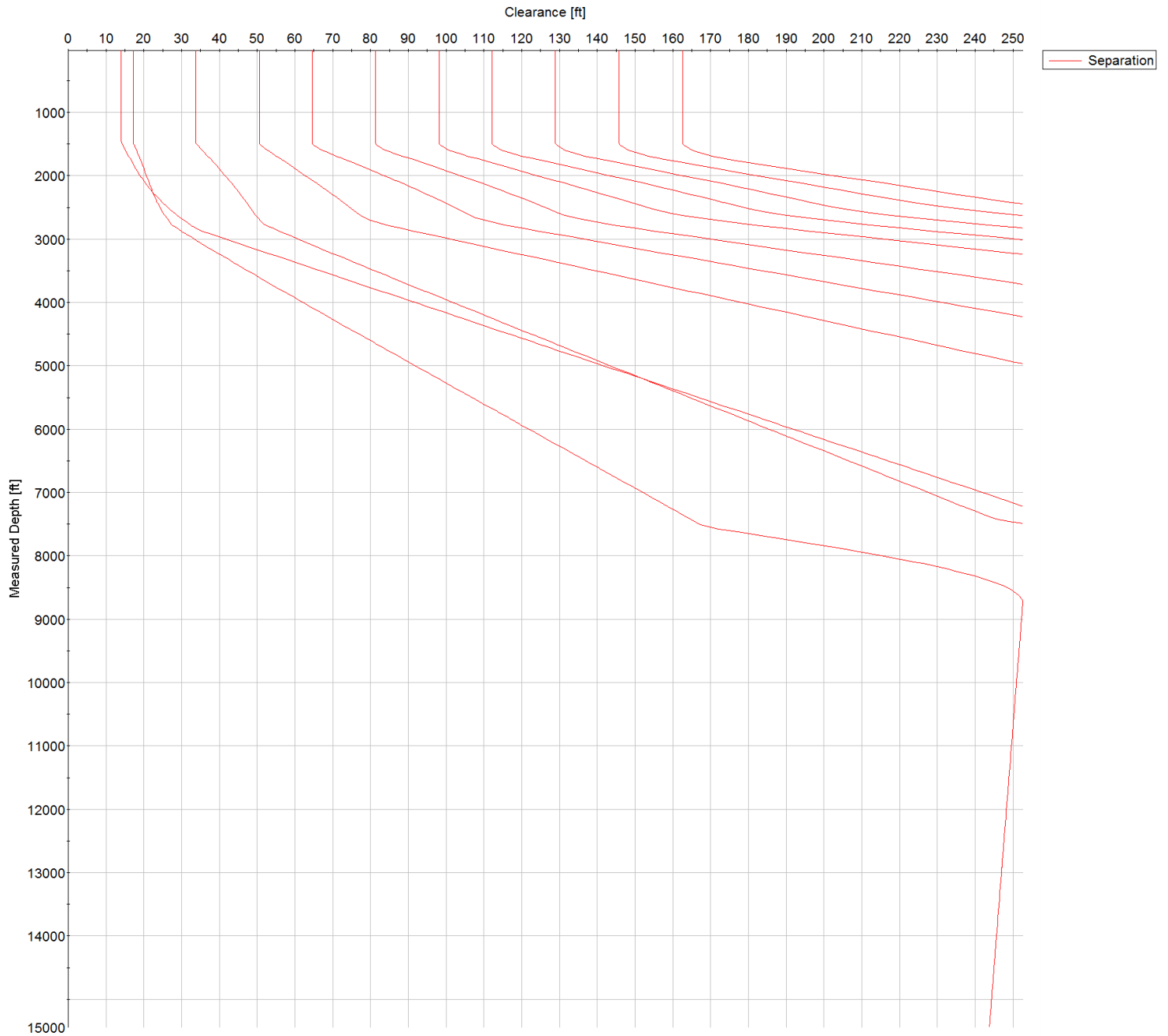


SYSDRILL
Closest Approach + Clearance Factor Summary Report
Wellbore: HOMESTEAD 2 (PWB)





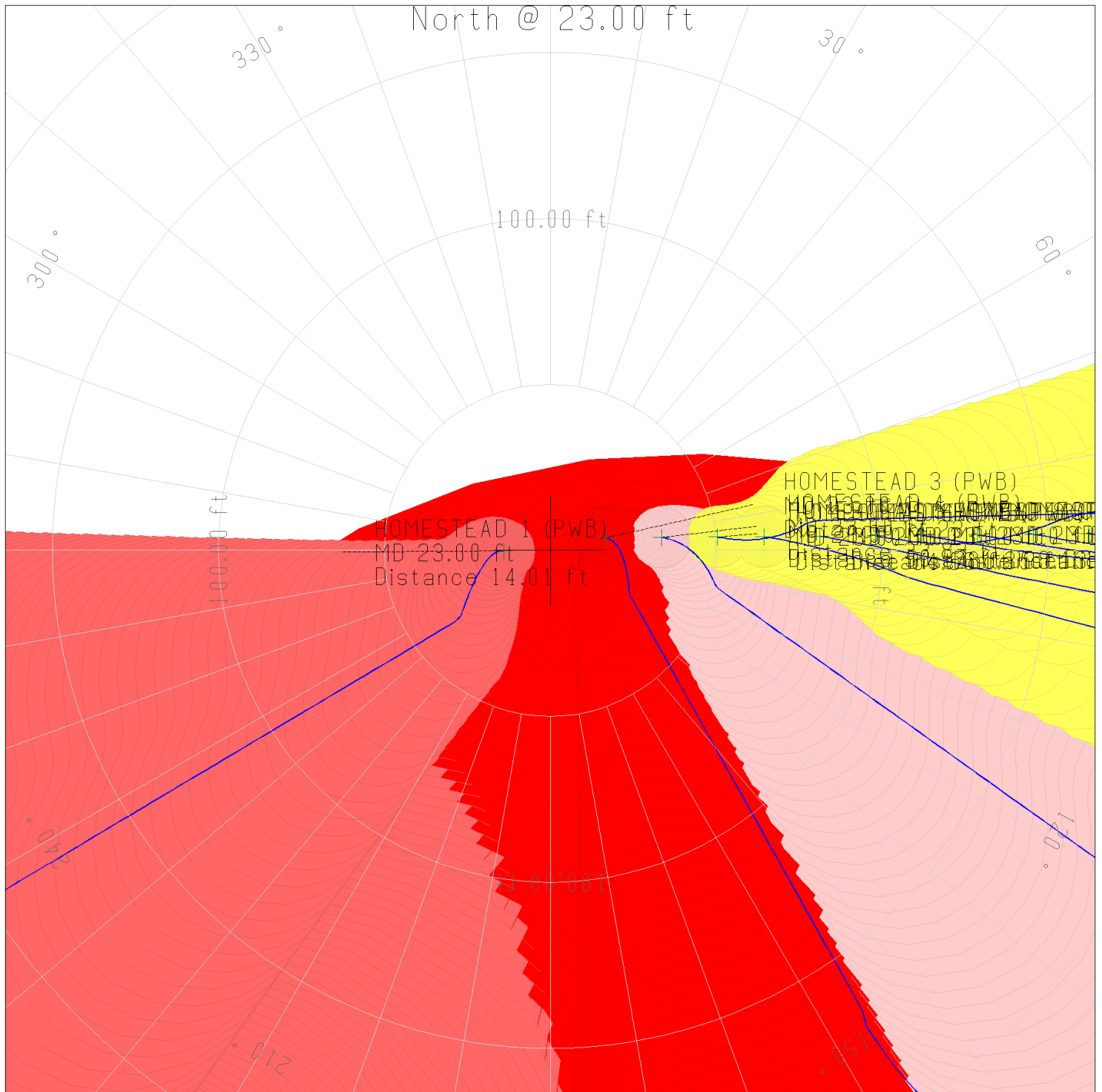
SYSDRILL
Closest Approach + Clearance Factor Summary Report
Wellbore: HOMESTEAD 2 (PWB)



All data is in Feet unless otherwise stated
Coordinates are from Slot MD's are from Rig and TVD's are from Rig (Planned Datum #1 5162.0ft above Mean Sea Level)
Vertical Section is from 0.00N 0.00E on azimuth 200.650 degrees
Prepared by Integrated Petroleum Technologies, Inc.
Date Printed: 1-Oct-2015



SYSDRILL
Closest Approach + Clearance Factor Summary Report
Wellbore: HOMESTEAD 2 (PWB)



All data is in Feet unless otherwise stated
Coordinates are from Slot MD's are from Rig and TVD's are from Rig (Planned Datum #1 5162.0ft above Mean Sea Level)
Vertical Section is from 0.00N 0.00E on azimuth 200.650 degrees
Prepared by Integrated Petroleum Technologies, Inc.
Date Printed: 1-Oct-2015