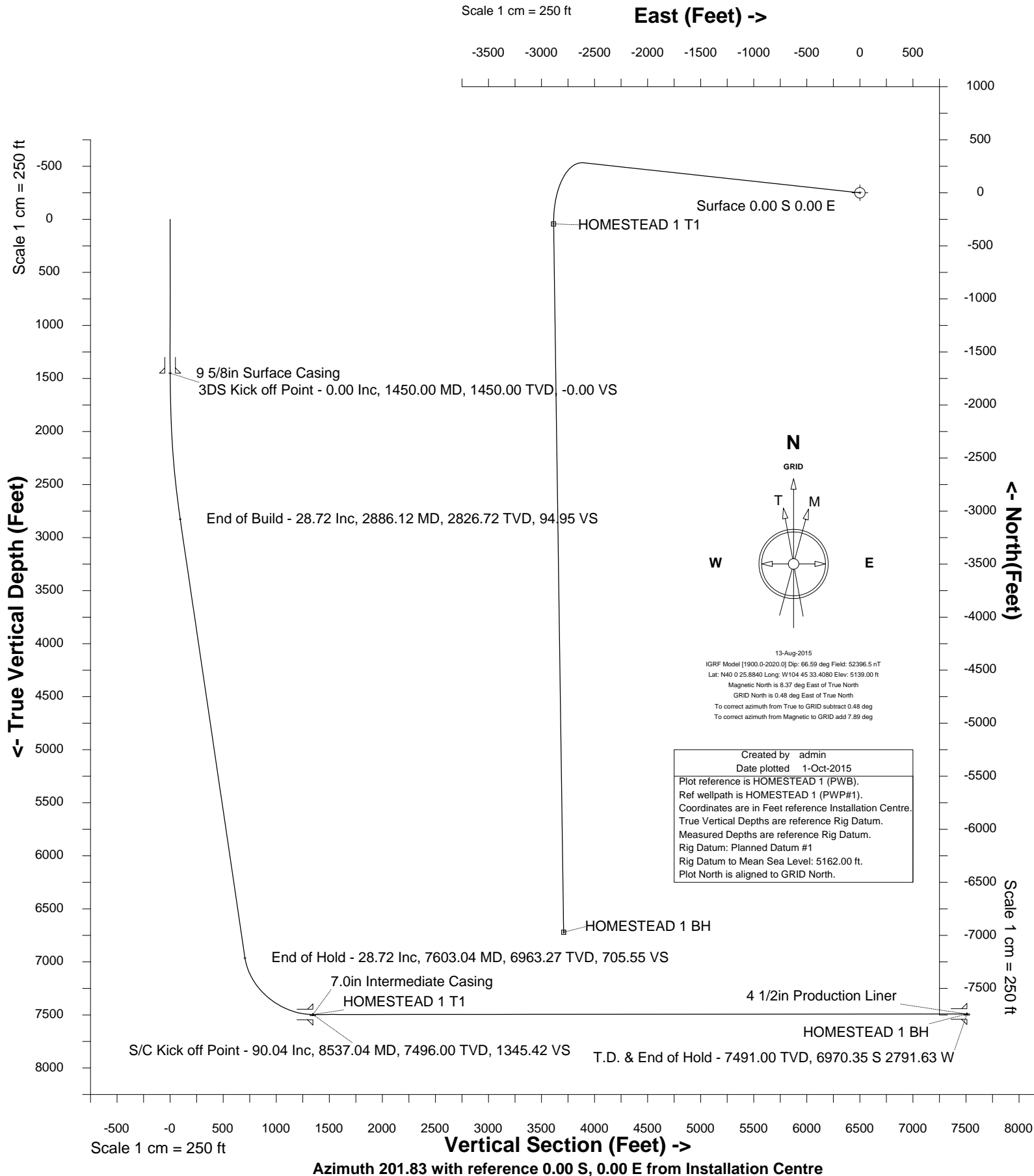


Wellbore HOMESTEAD 1 (PWB)





SYSDRILL
Well Design Combined Report
Wellbore: HOMESTEAD 1 (PWB)

Wellhead Details							
Name	Latitude	Longitude	Northing	Easting	North	East	Slot Elevation Above Ground
HOMESTEAD 1	40.00719000	-104.75928000	1246332.5735	3207491.0767	0.00N	0.00E	0.00

Declination		
Date	Source	Time
13-Aug-2015	IGRF Model [1900.0-2020.0]	08:38

Installation Details						
Name	Installation Position (Latitude)	Installation Position (Longitude)	Northing	Easting	Coord System Name	North Alignment
Homestead	40.00719000	-104.75928000	1246332.5735	3207491.0767	CO83-NF on NORTH AMERICAN DATUM 1983 datum	Grid

Summary Wellpath									
MD[ft]	Inc[deg]	Azi[deg]	TVD[ft]	North[ft]	East[ft]	Dogleg [deg/100ft]	Vertical Section[ft]	Northing	Easting
23.00	0.00	0.000	23.00	0.00N	0.00E		0.00	1246332.57	3207491.08
1450.00	0.00	276.200	1450.00	0.00N	0.00E	==>	0.00	1246332.57	3207491.08
2886.12	28.72	276.200	2826.72	38.07N	350.43W	2.00	94.95	1246370.64	3207140.66
7603.04	28.72	276.200	6963.27	282.86N	2603.97W	==>	705.55	1246615.43	3204887.20
15214.53	90.04	179.190	7491.00	6970.35S	2791.63W	==>	7508.60	1239362.47	3204699.54

Interpolated Wellpath								
MD[ft]	Inc[deg]	Azi[deg]	TVD[ft]	North[ft]	East[ft]	Dogleg [deg/100ft]	Vertical Section[ft]	All Station Comments
0.00	0.00	0.000	0.00	0.00N	0.00E		0.00	Rig Datum Slot Datum
23.00	0.00	0.000	23.00	0.00N	0.00E	==>	0.00	
100.00	0.00	0.000	100.00	0.00N	0.00E	==>	0.00	
200.00	0.00	0.000	200.00	0.00N	0.00E	==>	0.00	
300.00	0.00	0.000	300.00	0.00N	0.00E	==>	0.00	
400.00	0.00	0.000	400.00	0.00N	0.00E	==>	0.00	
500.00	0.00	0.000	500.00	0.00N	0.00E	==>	0.00	
600.00	0.00	0.000	600.00	0.00N	0.00E	==>	0.00	
700.00	0.00	0.000	700.00	0.00N	0.00E	==>	0.00	
800.00	0.00	0.000	800.00	0.00N	0.00E	==>	0.00	
900.00	0.00	0.000	900.00	0.00N	0.00E	==>	0.00	
1000.00	0.00	0.000	1000.00	0.00N	0.00E	==>	0.00	
1100.00	0.00	0.000	1100.00	0.00N	0.00E	==>	0.00	
1200.00	0.00	0.000	1200.00	0.00N	0.00E	==>	0.00	
1300.00	0.00	0.000	1300.00	0.00N	0.00E	==>	0.00	
1400.00	0.00	0.000	1400.00	0.00N	0.00E	==>	0.00	3DS Kick off Point, 9 5/8in Surface Casing
1450.00	0.00	276.200	1450.00	0.00N	0.00E	==>	0.00	
1500.00	1.00	276.200	1500.00	0.05N	0.43W	2.00	0.12	
1600.00	3.00	276.200	1599.93	0.42N	3.90W	2.00	1.06	
1700.00	5.00	276.200	1699.68	1.18N	10.84W	2.00	2.94	
1800.00	7.00	276.200	1799.13	2.31N	21.23W	2.00	5.75	
1900.00	9.00	276.200	1898.15	3.81N	35.06W	2.00	9.50	
2000.00	11.00	276.200	1996.63	5.68N	52.33W	2.00	14.18	
2100.00	13.00	276.200	2094.44	7.93N	72.99W	2.00	19.78	
2200.00	15.00	276.200	2191.46	10.54N	97.04W	2.00	26.29	
2300.00	17.00	276.200	2287.58	13.52N	124.45W	2.00	33.72	
2400.00	19.00	276.200	2382.68	16.86N	155.16W	2.00	42.04	
2500.00	21.00	276.200	2476.65	20.55N	189.17W	2.00	51.25	
2600.00	23.00	276.200	2569.36	24.59N	226.40W	2.00	61.34	
2700.00	25.00	276.200	2660.71	28.99N	266.84W	2.00	72.30	
2800.00	27.00	276.200	2750.59	33.72N	310.42W	2.00	84.11	End of Build
2886.12	28.72	276.200	2826.72	38.07N	350.43W	2.00	94.95	
2900.00	28.72	276.200	2838.89	38.79N	357.06W	==>	96.75	
3000.00	28.72	276.200	2926.59	43.98N	404.83W	==>	109.69	
3100.00	28.72	276.200	3014.29	49.17N	452.61W	==>	122.63	
3200.00	28.72	276.200	3101.98	54.36N	500.39W	==>	135.58	
3300.00	28.72	276.200	3189.68	59.55N	548.16W	==>	148.52	

All data is in Feet unless otherwise stated
Coordinates are from Slot MD's are from Rig and TVD's are from Rig (Planned Datum #1 5162.0ft above Mean Sea Level)
Vertical Section is from 0.00N 0.00E on azimuth 201.830 degrees
Bottom hole distance is 7508.60 Feet on azimuth 201.83 degrees from Wellhead
Calculation method uses Minimum Curvature method
Prepared by Integrated Petroleum Technologies, Inc.
Date Printed: 1-Oct-2015



SYSDRILL
Well Design Combined Report
Wellbore: HOMESTEAD 1 (PWB)

Interpolated Wellpath								
MD[ft]	Inc[deg]	Azi[deg]	TVD[ft]	North[ft]	East[ft]	Dogleg [deg/100ft]	Vertical Section[ft]	All Station Comments
3400.00	28.72	276.200	3277.37	64.74N	595.94W	==>	161.47	
3500.00	28.72	276.200	3365.07	69.93N	643.71W	==>	174.41	
3600.00	28.72	276.200	3452.76	75.11N	691.49W	==>	187.36	
3700.00	28.72	276.200	3540.46	80.30N	739.26W	==>	200.30	
3800.00	28.72	276.200	3628.16	85.49N	787.04W	==>	213.25	
3900.00	28.72	276.200	3715.85	90.68N	834.81W	==>	226.19	
4000.00	28.72	276.200	3803.55	95.87N	882.59W	==>	239.14	
4100.00	28.72	276.200	3891.24	101.06N	930.37W	==>	252.08	
4200.00	28.72	276.200	3978.94	106.25N	978.14W	==>	265.03	
4300.00	28.72	276.200	4066.63	111.44N	1025.92W	==>	277.97	
4400.00	28.72	276.200	4154.33	116.63N	1073.69W	==>	290.92	
4500.00	28.72	276.200	4242.03	121.82N	1121.47W	==>	303.86	
4600.00	28.72	276.200	4329.72	127.01N	1169.24W	==>	316.81	
4700.00	28.72	276.200	4417.42	132.20N	1217.02W	==>	329.75	
4800.00	28.72	276.200	4505.11	137.39N	1264.80W	==>	342.70	
4900.00	28.72	276.200	4592.81	142.58N	1312.57W	==>	355.64	
5000.00	28.72	276.200	4680.51	147.77N	1360.35W	==>	368.59	
5100.00	28.72	276.200	4768.20	152.96N	1408.12W	==>	381.53	
5200.00	28.72	276.200	4855.90	158.15N	1455.90W	==>	394.48	
5300.00	28.72	276.200	4943.59	163.34N	1503.67W	==>	407.42	
5400.00	28.72	276.200	5031.29	168.53N	1551.45W	==>	420.37	
5500.00	28.72	276.200	5118.98	173.72N	1599.23W	==>	433.31	
5600.00	28.72	276.200	5206.68	178.91N	1647.00W	==>	446.26	
5700.00	28.72	276.200	5294.38	184.10N	1694.78W	==>	459.20	
5800.00	28.72	276.200	5382.07	189.29N	1742.55W	==>	472.15	
5900.00	28.72	276.200	5469.77	194.48N	1790.33W	==>	485.09	
6000.00	28.72	276.200	5557.46	199.67N	1838.10W	==>	498.04	
6100.00	28.72	276.200	5645.16	204.86N	1885.88W	==>	510.98	
6200.00	28.72	276.200	5732.85	210.05N	1933.65W	==>	523.93	
6300.00	28.72	276.200	5820.55	215.24N	1981.43W	==>	536.87	
6400.00	28.72	276.200	5908.25	220.43N	2029.21W	==>	549.82	
6500.00	28.72	276.200	5995.94	225.62N	2076.98W	==>	562.76	
6600.00	28.72	276.200	6083.64	230.81N	2124.76W	==>	575.70	
6700.00	28.72	276.200	6171.33	236.00N	2172.53W	==>	588.65	
6800.00	28.72	276.200	6259.03	241.19N	2220.31W	==>	601.59	
6900.00	28.72	276.200	6346.73	246.38N	2268.08W	==>	614.54	
7000.00	28.72	276.200	6434.42	251.57N	2315.86W	==>	627.48	
7100.00	28.72	276.200	6522.12	256.76N	2363.64W	==>	640.43	
7200.00	28.72	276.200	6609.81	261.95N	2411.41W	==>	653.37	
7300.00	28.72	276.200	6697.51	267.14N	2459.19W	==>	666.32	
7400.00	28.72	276.200	6785.20	272.33N	2506.96W	==>	679.26	
7500.00	28.72	276.200	6872.90	277.52N	2554.74W	==>	692.21	
7600.00	28.72	276.200	6960.60	282.71N	2602.51W	==>	705.15	
7603.04	28.72	276.200	6963.27	282.86N	2603.97W	==>	705.55	End of Hold
7700.00	29.18	256.110	7048.31	279.70N	2650.19W	10.00	725.67	
7800.00	32.55	237.670	7134.33	259.41N	2696.70W	10.00	761.79	
7900.00	38.07	223.190	7216.04	222.45N	2740.65W	10.00	812.44	
8000.00	44.96	212.210	7290.97	169.95N	2780.69W	10.00	876.07	
8100.00	52.67	203.720	7356.84	103.49N	2815.60W	10.00	950.75	7.0in Intermediate Casing
8200.00	60.87	196.860	7411.64	25.09N	2844.34W	10.00	1034.21	
8300.00	69.36	191.040	7453.71	62.85S	2866.02W	10.00	1123.91	
8400.00	78.03	185.840	7481.77	157.68S	2879.99W	10.00	1217.13	
8500.00	86.79	180.960	7494.98	256.51S	2885.81W	10.00	1311.04	
8537.00	90.04	179.190	7496.00	293.49S	2885.86W	10.00	1345.39	7.0in Intermediate Casing
8600.00	90.04	179.190	7495.95	356.48S	2884.98W	==>	1403.54	
8700.00	90.04	179.190	7495.88	456.47S	2883.56W	==>	1495.83	
8800.00	90.04	179.190	7495.80	556.46S	2882.15W	==>	1588.13	
8900.00	90.04	179.190	7495.73	656.45S	2880.74W	==>	1680.43	
9000.00	90.04	179.190	7495.65	756.44S	2879.33W	==>	1772.73	
9100.00	90.04	179.190	7495.58	856.43S	2877.92W	==>	1865.02	
9200.00	90.04	179.190	7495.50	956.42S	2876.51W	==>	1957.32	
9300.00	90.04	179.190	7495.43	1056.41S	2875.10W	==>	2049.62	

All data is in Feet unless otherwise stated
Coordinates are from Slot MD's are from Rig and TVD's are from Rig (Planned Datum #1 5162.0ft above Mean Sea Level)
Vertical Section is from 0.00N 0.00E on azimuth 201.830 degrees
Bottom hole distance is 7508.60 Feet on azimuth 201.83 degrees from Wellhead
Calculation method uses Minimum Curvature method
Prepared by Integrated Petroleum Technologies, Inc.
Date Printed: 1-Oct-2015



SYSDRILL
Well Design Combined Report
Wellbore: HOMESTEAD 1 (PWB)

Interpolated Wellpath								
MD[ft]	Inc[deg]	Azi[deg]	TVD[ft]	North[ft]	East[ft]	Dogleg [deg/100ft]	Vertical Section[ft]	All Station Comments
9400.00	90.04	179.190	7495.35	1156.40S	2873.69W	==>	2141.92	
9500.00	90.04	179.190	7495.28	1256.39S	2872.27W	==>	2234.21	
9600.00	90.04	179.190	7495.20	1356.38S	2870.86W	==>	2326.51	
9700.00	90.04	179.190	7495.13	1456.37S	2869.45W	==>	2418.81	
9800.00	90.04	179.190	7495.05	1556.36S	2868.04W	==>	2511.11	
9900.00	90.04	179.190	7494.98	1656.35S	2866.63W	==>	2603.41	
10000.00	90.04	179.190	7494.90	1756.34S	2865.22W	==>	2695.70	
10100.00	90.04	179.190	7494.83	1856.33S	2863.81W	==>	2788.00	
10200.00	90.04	179.190	7494.75	1956.32S	2862.40W	==>	2880.30	
10300.00	90.04	179.190	7494.68	2056.31S	2860.99W	==>	2972.60	
10400.00	90.04	179.190	7494.61	2156.30S	2859.57W	==>	3064.89	
10500.00	90.04	179.190	7494.53	2256.29S	2858.16W	==>	3157.19	
10600.00	90.04	179.190	7494.46	2356.28S	2856.75W	==>	3249.49	
10700.00	90.04	179.190	7494.38	2456.27S	2855.34W	==>	3341.79	
10800.00	90.04	179.190	7494.31	2556.26S	2853.93W	==>	3434.08	
10900.00	90.04	179.190	7494.23	2656.25S	2852.52W	==>	3526.38	
11000.00	90.04	179.190	7494.16	2756.24S	2851.11W	==>	3618.68	
11100.00	90.04	179.190	7494.08	2856.23S	2849.70W	==>	3710.98	
11200.00	90.04	179.190	7494.01	2956.22S	2848.29W	==>	3803.28	
11300.00	90.04	179.190	7493.93	3056.21S	2846.87W	==>	3895.57	
11400.00	90.04	179.190	7493.86	3156.20S	2845.46W	==>	3987.87	
11500.00	90.04	179.190	7493.78	3256.19S	2844.05W	==>	4080.17	
11600.00	90.04	179.190	7493.71	3356.18S	2842.64W	==>	4172.47	
11700.00	90.04	179.190	7493.63	3456.17S	2841.23W	==>	4264.76	
11800.00	90.04	179.190	7493.56	3556.16S	2839.82W	==>	4357.06	
11900.00	90.04	179.190	7493.48	3656.15S	2838.41W	==>	4449.36	
12000.00	90.04	179.190	7493.41	3756.14S	2837.00W	==>	4541.66	
12100.00	90.04	179.190	7493.33	3856.13S	2835.59W	==>	4633.95	
12200.00	90.04	179.190	7493.26	3956.12S	2834.17W	==>	4726.25	
12300.00	90.04	179.190	7493.18	4056.11S	2832.76W	==>	4818.55	
12400.00	90.04	179.190	7493.11	4156.10S	2831.35W	==>	4910.85	
12500.00	90.04	179.190	7493.03	4256.09S	2829.94W	==>	5003.15	
12600.00	90.04	179.190	7492.96	4356.08S	2828.53W	==>	5095.44	
12700.00	90.04	179.190	7492.88	4456.07S	2827.12W	==>	5187.74	
12800.00	90.04	179.190	7492.81	4556.06S	2825.71W	==>	5280.04	
12900.00	90.04	179.190	7492.73	4656.05S	2824.30W	==>	5372.34	
13000.00	90.04	179.190	7492.66	4756.04S	2822.88W	==>	5464.63	
13100.00	90.04	179.190	7492.58	4856.03S	2821.47W	==>	5556.93	
13200.00	90.04	179.190	7492.51	4956.02S	2820.06W	==>	5649.23	
13300.00	90.04	179.190	7492.43	5056.01S	2818.65W	==>	5741.53	
13400.00	90.04	179.190	7492.36	5156.00S	2817.24W	==>	5833.82	
13500.00	90.04	179.190	7492.28	5255.99S	2815.83W	==>	5926.12	
13600.00	90.04	179.190	7492.21	5355.98S	2814.42W	==>	6018.42	
13700.00	90.04	179.190	7492.13	5455.97S	2813.01W	==>	6110.72	
13800.00	90.04	179.190	7492.06	5555.96S	2811.60W	==>	6203.02	
13900.00	90.04	179.190	7491.98	5655.95S	2810.18W	==>	6295.31	
14000.00	90.04	179.190	7491.91	5755.94S	2808.77W	==>	6387.61	
14100.00	90.04	179.190	7491.83	5855.93S	2807.36W	==>	6479.91	
14200.00	90.04	179.190	7491.76	5955.92S	2805.95W	==>	6572.21	
14300.00	90.04	179.190	7491.68	6055.91S	2804.54W	==>	6664.50	
14400.00	90.04	179.190	7491.61	6155.90S	2803.13W	==>	6756.80	
14500.00	90.04	179.190	7491.54	6255.89S	2801.72W	==>	6849.10	
14600.00	90.04	179.190	7491.46	6355.88S	2800.31W	==>	6941.40	
14700.00	90.04	179.190	7491.39	6455.87S	2798.90W	==>	7033.69	
14800.00	90.04	179.190	7491.31	6555.86S	2797.48W	==>	7125.99	
14900.00	90.04	179.190	7491.24	6655.85S	2796.07W	==>	7218.29	
15000.00	90.04	179.190	7491.16	6755.84S	2794.66W	==>	7310.59	
15100.00	90.04	179.190	7491.09	6855.83S	2793.25W	==>	7402.89	
15200.00	90.04	179.190	7491.01	6955.82S	2791.84W	==>	7495.18	
15214.53	90.04	179.190	7491.00	6970.35S	2791.63W	==>	7508.60	End of Hold/Target, 4 1/2in Production Liner, HOMESTEAD 1 BH

All data is in Feet unless otherwise stated
Coordinates are from Slot MD's are from Rig and TVD's are from Rig (Planned Datum #1 5162.0ft above Mean Sea Level)
Vertical Section is from 0.00N 0.00E on azimuth 201.830 degrees
Bottom hole distance is 7508.60 Feet on azimuth 201.83 degrees from Wellhead
Calculation method uses Minimum Curvature method
Prepared by Integrated Petroleum Technologies, Inc.
Date Printed: 1-Oct-2015

Hole Sections

Diameter [in]	Start MD[ft]	Start TVD[ft]	Start North[ft]	Start East[ft]	End MD[ft]	End TVD[ft]	End North[ft]	End East[ft]
13 1/2	23.00	23.00	0.00N	0.00E	1450.00	1450.00	0.00N	0.00E
8 3/4	1450.00	1450.00	0.00N	0.00E	8537.00	7496.00	293.49S	2885.86W
6 1/4	8536.00	7496.00	292.49S	2885.88W	15214.53	7491.00	6970.35S	2791.63W

Casings

Name	Top MD[ft]	Top TVD[ft]	Top North[ft]	Top East[ft]	Shoe MD[ft]	Shoe TVD[ft]	Shoe North[ft]	Shoe East[ft]
9 5/8in Surface Casing	23.00	23.00	0.00N	0.00E	1450.00	1450.00	0.00N	0.00E
7.0in Intermediate Casing	23.00	23.00	0.00N	0.00E	8537.00	7496.00	293.49S	2885.86W
4 1/2in Production Liner	7640.00	6995.71	283.59N	2621.63W	15214.53	7491.00	6970.35S	2791.63W

Targets

Name	North[ft]	East[ft]	TVD[ft]	Latitude	Longitude	Northing	Easting
HOMESTEAD 1 BH	6970.35S	2791.63W	7491.00	39.98812000	-104.76945000	1239362.47	3204699.54
HOMESTEAD 1 T1	293.52S	2885.86W	7496.00	40.00645000	-104.76959000	1246039.06	3204605.32

Survey Tool Program

Reference	Survey Name	MD[ft]	TVD[ft]	Survey Tool	Error Model
399753	Planned	15214.53	7491.00	ISCWSA MWD	Rev 3 + Fixed Rig + Rotating

Notes



SYSDRILL
Closest Approach + Clearance Factor Summary Report
Wellbore: HOMESTEAD 1 (PWB)

Ellipse separations are reported ONLY if BOTH wells have uncertainty data
Only Depth and Magnetic Reference Field error terms are correlated across tie points
Proximities beyond 2500.00ft with expansion rate of 0.00ft/1000ft are not reported
Scan limit is calculated on CENTRE to CENTRE distance
Summary data uses Closest Approach clearance calculation for all minima
Hole size/Casings ARE included
Hole size/Casings are NOT subtracted from Centre-Centre distance
Confidence limit of 95.00% / 2.80 SD.

Wellbore		
Name	Created	Last Revised
HOMESTEAD 1 (PWB)	17-Aug-2015	1-Oct-2015

Well		
Name	Government ID	Last Revised
HOMESTEAD 1		17-Aug-2015

Slot						
Name	Latitude	Longitude	Grid Northing	Grid Easting	North	East
HOMESTEAD 1	40.00719000	-104.75928000	1246332.5735	3207491.0767	0.00N	0.00E

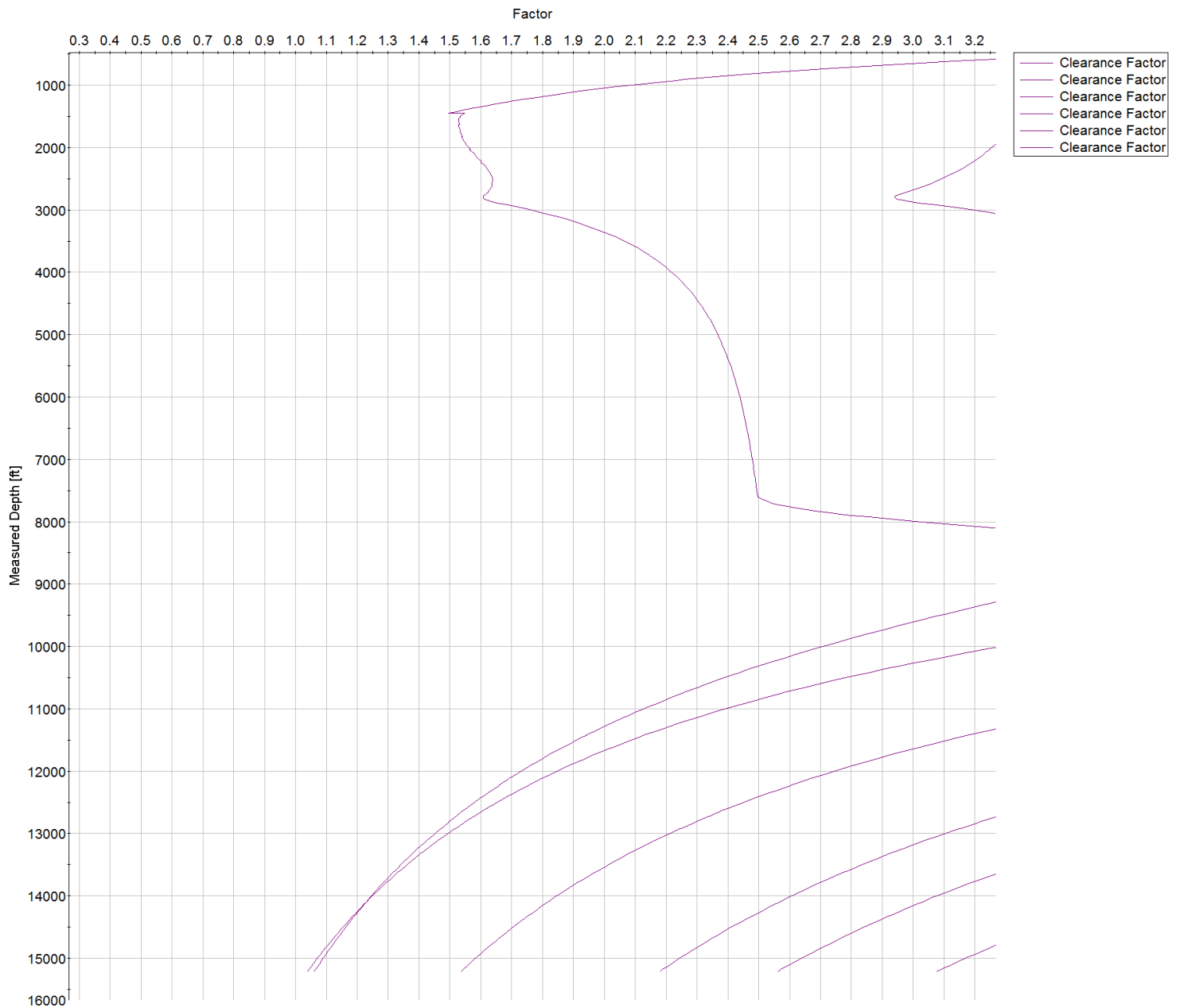
Installation						
Name	Installation Position (Latitude)	Installation Position (Longitude)	Easting	Northing	Coord System Name	North Alignment
Homestead	40.00719000	-104.75928000	3207491.0767	1246332.5735	CO83-NF on NORTH AMERICAN DATUM 1983 datum	Grid

Clearance Summary							
Offset WellName	Separation [ft]	MD[ft]	Diverging From[ft]	Ellipse Separation [ft]	Ellipse MD[ft]	Clearance Factor	Clearance MD[ft]
HOMESTEAD 2	14.01	1450.17	1450.17	4.64	1450.00	1.06	15214.53
HOMESTEAD 3	31.03	1450.17	15214.53	13.89	15214.53	1.04	15214.53
HOMESTEAD 4	47.76	1450.17	1450.17	38.40	1450.00	1.54	15214.53
HOMESTEAD 5	64.53	1450.17	15214.53	55.17	1450.00	2.18	15214.53
HOMESTEAD 6	78.52	1450.17	15214.53	69.16	1450.00	2.56	15214.53
HOMESTEAD 7	95.32	1450.17	8585.99	85.96	1450.00	3.08	15214.53
HOMESTEAD 8	112.11	1450.17	8585.99	102.75	1450.00	3.66	15214.53
HOMESTEAD 9	126.11	1450.17	15214.53	116.75	1450.00	4.10	15214.53
HOMESTEAD 10	142.91	1450.17	1450.17	133.56	1450.00	4.62	15214.53
HOMESTEAD 11	159.72	1450.17	8537.04	150.36	1450.00	5.17	15214.53
HOMESTEAD 12	176.52	1450.17	15214.53	167.17	1450.00	5.64	15214.53
HOMESTEAD 13	402.44	1991.50	15214.53	390.02	2007.91	6.17	15214.53
HOMESTEAD 14	420.22	1450.17	15214.53	410.87	1450.00	6.64	15214.53
HOMESTEAD 15	437.02	1450.17	1450.17	427.68	1450.00	32.86	2500.03
HOMESTEAD 16	453.83	1450.17	1450.17	444.49	1450.00	35.18	2483.63
HOMESTEAD 17	467.84	1450.17	1450.17	458.49	1450.00	37.52	2467.23
HOMESTEAD 18	484.65	1450.17	1450.17	475.30	1450.00	39.84	2385.20
HOMESTEAD 19	501.45	1450.17	1450.17	492.11	1450.00	42.21	2368.80
HOMESTEAD 20	518.26	1450.17	1450.17	508.92	1450.00	44.41	2368.80
HOMESTEAD 21	532.27	1450.17	1450.17	522.92	1450.00	46.77	2286.78
HOMESTEAD 22	549.08	1450.17	1450.17	539.74	1450.00	49.26	2270.38
HOMESTEAD 23	565.88	1450.17	1450.17	556.54	1450.00	51.42	2253.97



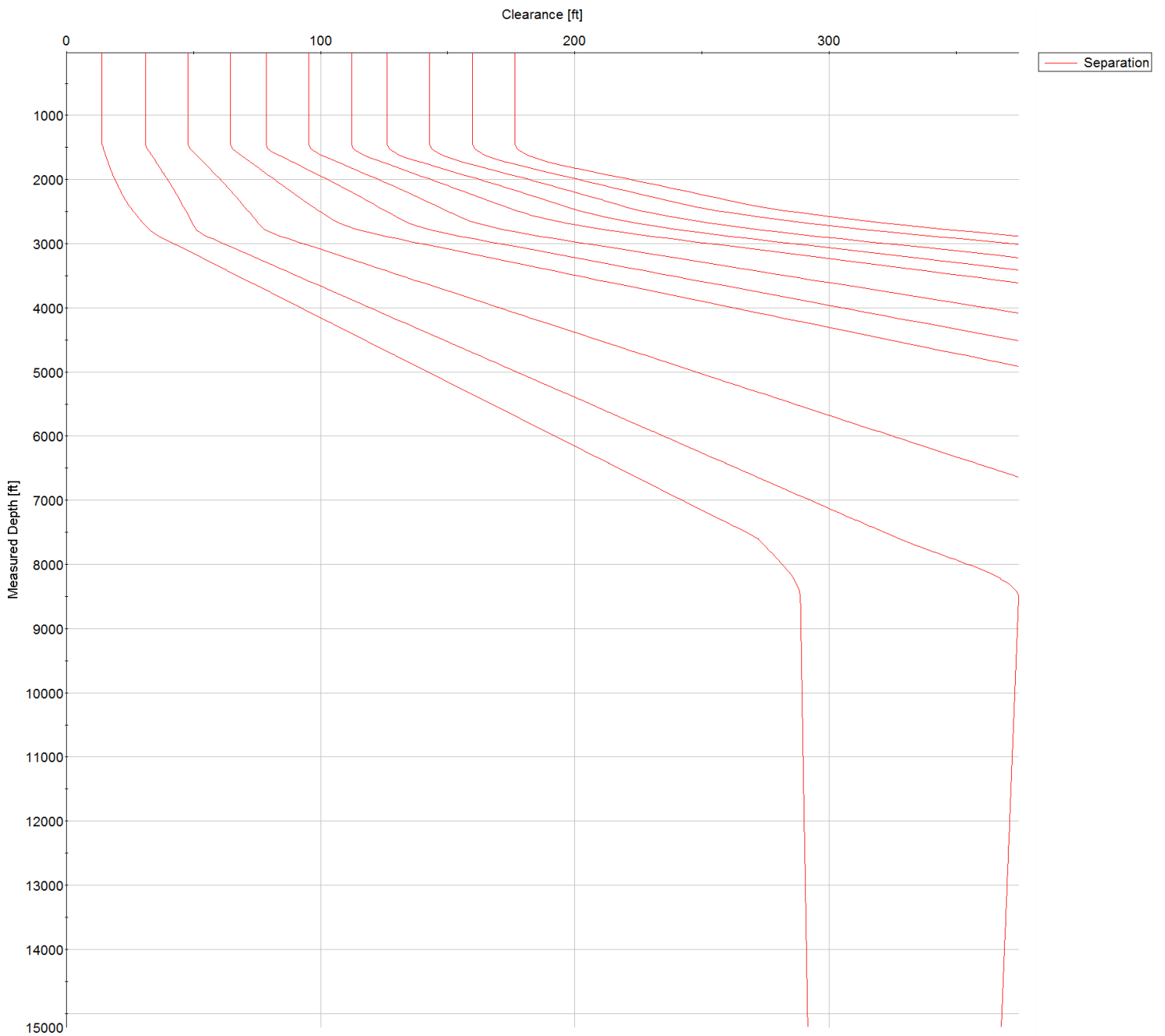
SYSDRILL
Closest Approach + Clearance Factor Summary Report
Wellbore: HOMESTEAD 1 (PWB)

Clearance Summary							
Offset WellName	Separation [ft]	MD[ft]	Diverging From[ft]	Ellipse Separation [ft]	Ellipse MD[ft]	Clearance Factor	Clearance MD[ft]
HOMESTEAD 24	579.89	1450.17	1450.17	570.55	1450.00	53.90	2188.35
BERGMAN #2	781.35	14333.88	14333.88	600.04	14294.65	4.27	14229.04
WILLARD, JOHN W. GAS UNIT #1	1169.20	2746.10	2746.10	1142.20	2811.71	29.61	4484.94
VISTA USX #WW33-08D	1802.72	8110.27	8110.27	1728.16	8126.67	21.67	8750.03





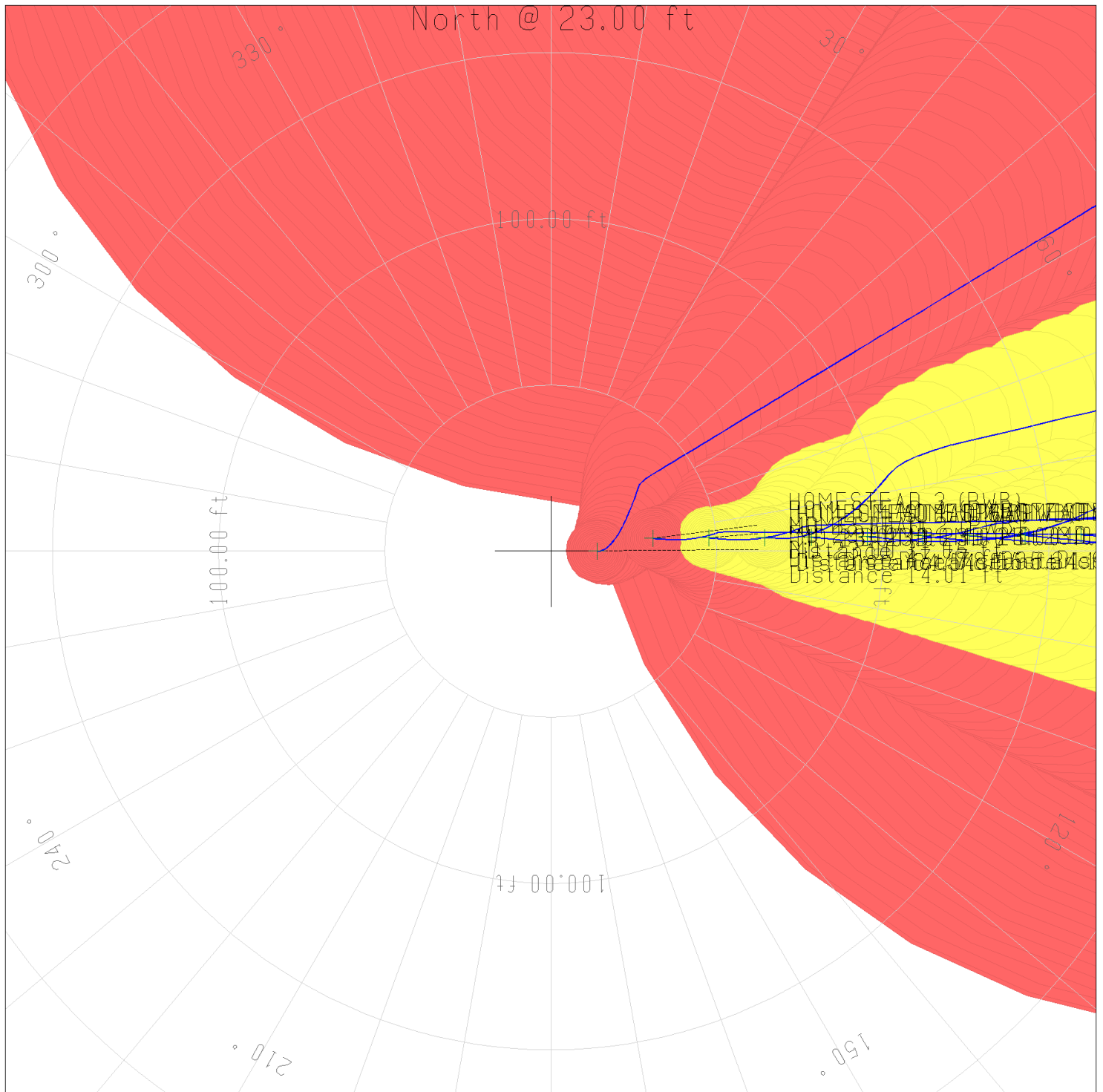
SYSDRILL
Closest Approach + Clearance Factor Summary Report
Wellbore: HOMESTEAD 1 (PWB)



All data is in Feet unless otherwise stated
Coordinates are from Slot MD's are from Rig and TVD's are from Rig (Planned Datum #1 5162.0ft above Mean Sea Level)
Vertical Section is from 0.00N 0.00E on azimuth 201.830 degrees
Prepared by Integrated Petroleum Technologies, Inc.
Date Printed: 1-Oct-2015



SYSDRILL
Closest Approach + Clearance Factor Summary Report
Wellbore: HOMESTEAD 1 (PWB)



All data is in Feet unless otherwise stated
Coordinates are from Slot MD's are from Rig and TVD's are from Rig (Planned Datum #1 5162.0ft above Mean Sea Level)
Vertical Section is from 0.00N 0.00E on azimuth 201.830 degrees
Prepared by Integrated Petroleum Technologies, Inc.
Date Printed: 1-Oct-2015