



Kerr-McGee Oil & Gas Onshore LP

A subsidiary of Anadarko Petroleum Corporation

1099 18th Street
Denver, CO 80202
720-929-6000

February 23, 2017

Matt Lepore
Director, Colorado Oil and Gas Conservation Commission
Department of Natural Resources
The Chancery Building
1120 Lincoln Street, Suite 801
Denver, CO 80203

Re: **30 Day Certification Letter - 318A.e**
SWARTZ 28N-12HZ (API # 05-123-42684)
Township 2 North, Range 65 West
Section 13: SW/4SE/4
Unit Acreage: 720
Unit Spacing: 02N-65W-Sec 01 SE/4SW/4; SW/4SE/4
02N-65W-Sec 12 E2W/2; W/2E/2
02N-65W-Sec 13 E2W/2; W/2E/2
Weld County, Colorado

Dear Director Lepore:

Kerr-McGee Oil and Gas Onshore LP ("KMG") hereby certifies that a thirty (30) day notice has been given by certified mail to all mineral owners in the proposed wellbore spacing unit. We have not received any objections to such well location, proposed spacing unit, or additional producing formation. KMG hereby respectfully requests approval of this boundary well.

If you have any questions or issues regarding this permit, please contact Cheryl Light at (720) 929-6461.

Very truly yours,

KERR-McGEE OIL AND GAS ONSHORE LP

A handwritten signature in blue ink that reads 'Cheryl Light'.

Cheryl Light
Senior Regulatory Analyst

WELL LOCATION CERTIFICATE: SWARTZ 28N-12HZ

SECTION 13, TOWNSHIP 2 NORTH, RANGE 65 WEST, 6TH P.M.

BH-386' FSL
2312' FEL

(BASIS OF BEARINGS) SEE NOTE 2
S 89°36'50" E 2594.45'

NW COR. SEC. 13
2" ALUM. CAP
PLS 25937, 1996

S 89°36'41" E 2594.89'

N ¼ COR. SEC. 13
2" ALUM. CAP
PLS 25937, 1996

NE COR. SEC. 13
3 ¼" ALUM. CAP
PLS 23520, 2002

SURFACE LOCATION
GROUND ELEVATION= 4877'
NAD83 STATE PLANE CO N
LATITUDE= 40.132087°
LONGITUDE= -104.610687°

LATITUDE= 40°07'55.412"
LONGITUDE= -104°36'38.473"

HEEL LOCATION
NAD83 STATE PLANE CO N
LATITUDE= 40.133199°
LONGITUDE= -104.610583°

LATITUDE= 40°07'59.516"
LONGITUDE= -104°36'40.260"

W ¼ COR. SEC. 13
3 ¼" ALUM. CAP
PLS 10855, 1998

S 89°55'24" E 2605.94'

BOTTOM HOLE LOCATION
NAD83 STATE PLANE CO N
LATITUDE= 40.161169°
LONGITUDE= -104.611183°

LATITUDE= 40°09'40.208"
LONGITUDE= -104°36'40.259"

C ¼ COR. SEC. 13
3 ¼" ALUM. CAP
PLS 24307, 2006

S 89°49'20" E 2602.73'

E ¼ COR. SEC. 13
3 ¼" ALUM. CAP
PLS 27269, 2004

NOTES:
BH AND HEEL
LOCATIONS PROVIDED BY CLIENT.
SEE ATTACHED MAP FOR ADDITIONAL
IMPROVEMENTS WITHIN 500'.

PDOP= 1.5
GPS OPERATOR: BEN HARDENBERGH

HEEL- 738' FSL
2304' FEL
N 19°29'21" W 428'
(TRUE N 18°54'52" W)
**SWARTZ
28N-12HZ**
2165'

SW COR. SEC. 13
2 ½" ALUM. CAP
PLS 34980, 2007

S 89°57'07" W 2609.78'

S ¼ COR. SEC. 13
2 ½" ALUM. CAP
PLS 38345, 2013

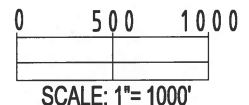
S 89°57'07" W 2609.78'

SE COR. SEC. 13
3 ¼" ALUM. CAP
PLS 27269, 1998

LEGEND

- ⊕ = EXISTING MONUMENT ⊕ = BOTTOM HOLE
● = PROPOSED WELL ▲ = HEEL LOCATION
BH = BOTTOM HOLE ○ = CALCULATED POSITION

WELL SWARTZ 28N-12HZ TO BE LOCATED
334' FSL AND 2165' FEL



NOTES:

- THIS FIELD SURVEY CONFORMS TO THE MINIMUM STANDARDS SET BY THE C.O.G.C.C., RULE NO. 215
- BEARINGS ARE BASED ON THE ASSUMPTION THAT THE NORTH LINE OF THE NORTHEAST QUARTER OF SECTION 13, BEARS S89°36'50"E BETWEEN THE MONUMENTS DESCRIBED HEREON.
- GRID DISTANCES ARE SHOWN, AS MEASURED IN THE FIELD, WITH TIES TO WELLS MEASURED PERPENDICULAR TO SECTION LINES. TO GET GROUND DISTANCES MULTIPLY THE SHOWN DISTANCE BY 1.000272228.
- ALL LINES SHOWN THAT ARE WITHOUT DIMENSION SHOULD BE CONSIDERED SCALED AND ONLY REPRESENT A GRAPHICAL DEPICTION OF THE APPROXIMATE LOCATION OF SAID LINE.
- CERTIFIED ON AUGUST 4, 2015 FOR WELLS STAKED ON JANUARY 5, 2015. THIRD REVISION DECEMBER 30, 2015 FOR HEEL AND BHL CHANGES.

SHEET 1 OF 3

I, JACOB S. FRISCH, A LICENSED PROFESSIONAL LAND SURVEYOR IN THE STATE OF COLORADO DO HEREBY CERTIFY TO **KERR-MCGEE OIL & GAS ONSHORE LP**, THAT THE SURVEY AND WELL LOCATION CERTIFICATE SHOWN HEREON WERE DONE BY ME OR UNDER MY DIRECT SUPERVISION AND THAT THE DRAWING SHOWN HEREON ACCURATELY DEPICTS THE PROPOSED LOCATION OF THE WELL. THIS CERTIFICATE DOES NOT REPRESENT A LAND SURVEY PLAT OR IMPROVEMENT SURVEY PLAT AS DEFINED BY C.R.S. 38-51-102 AND CANNOT BE RELIED UPON TO DETERMINE OWNERSHIP.

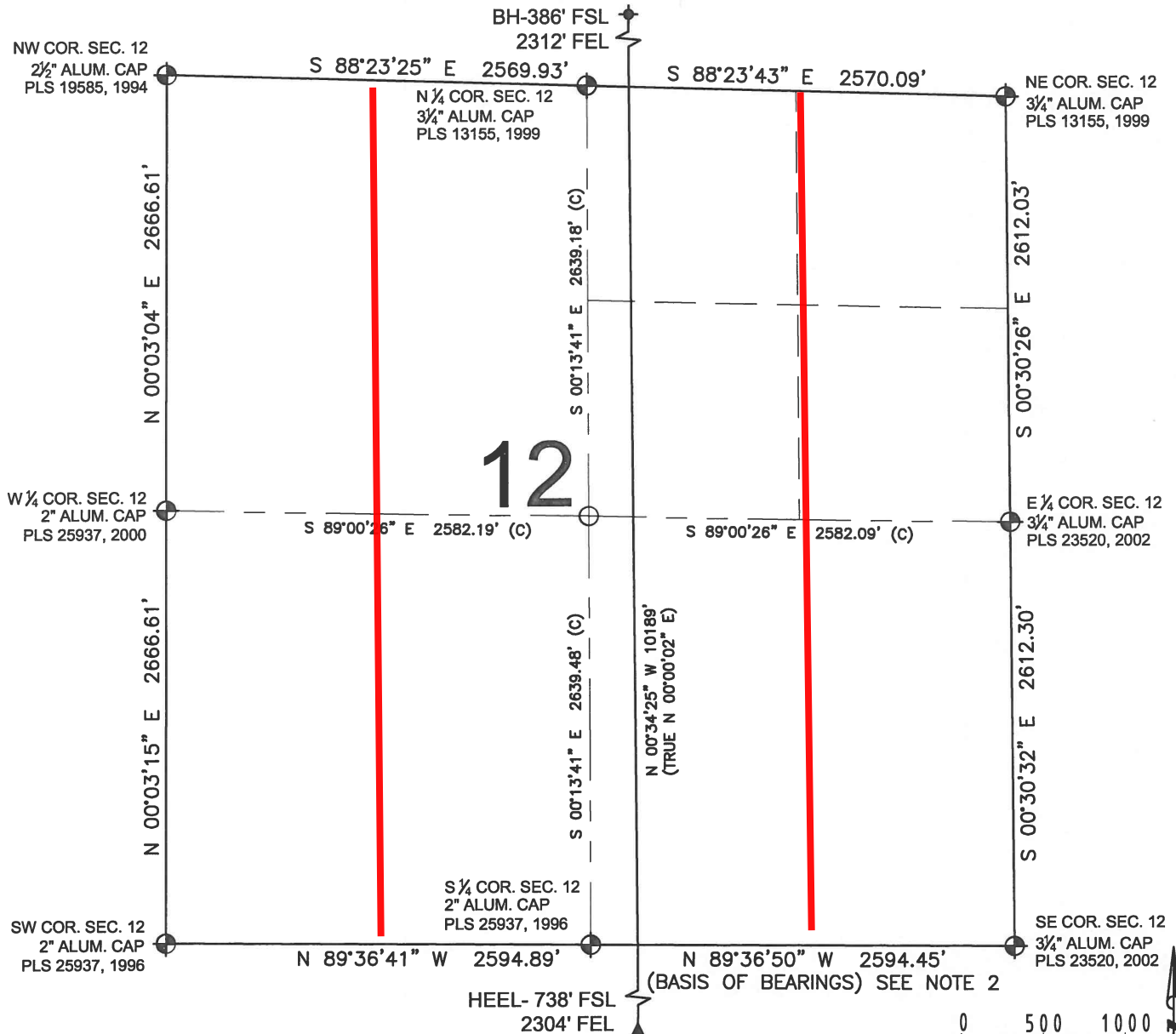


PREPARED BY:	FIELD DATE: 01-05-15	SURFACE LOCATION: SW 1/4 SE 1/4, SEC. 13, T2N, R65W, 6TH P.M.
BY:	DRAWING DATE: 12-12-16	WELD COUNTY, COLORADO
CHECKED:		

NOTICE: ACCORDING TO COLORADO LAW YOU MUST COMMENCE ANY LEGAL ACTION BASED UPON ANY DEFECT IN THIS SURVEY WITHIN THREE YEARS AFTER YOU FIRST DISCOVER SUCH DEFECT. IN NO EVENT MAY ANY ACTION BASED UPON ANY DEFECT IN THIS SURVEY BE COMMENCED MORE THAN TEN YEARS FROM THIS SAID DATE OF THIS CERTIFICATION SHOWN HEREON.

WELL LOCATION CERTIFICATE: SWARTZ 28N-12HZ

SECTION 12, TOWNSHIP 2 NORTH, RANGE 65 WEST, 6TH P.M.

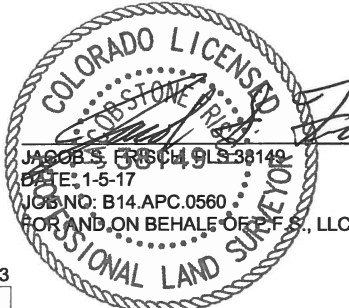


NOTES:

1. THIS FIELD SURVEY CONFORMS TO THE MINIMUM STANDARDS SET BY THE C.O.G.C.C., RULE NO. 215
2. BEARINGS ARE BASED ON THE ASSUMPTION THAT THE NORTH LINE OF THE NORTHEAST QUARTER OF SECTION 13, BEARS S89°36'50"E BETWEEN THE MONUMENTS DESCRIBED HEREON.
3. GRID DISTANCES ARE SHOWN, AS MEASURED IN THE FIELD, WITH TIES TO WELLS MEASURED PERPENDICULAR TO SECTION LINES. TO GET GROUND DISTANCES MULTIPLY THE SHOWN DISTANCE BY 1.000272228.
4. ALL LINES SHOWN THAT ARE WITHOUT DIMENSION SHOULD BE CONSIDERED SCALED AND ONLY REPRESENT A GRAPHICAL DEPICTION OF THE APPROXIMATE LOCATION OF SAID LINE.
5. CERTIFIED ON AUGUST 4, 2015 FOR WELLS STAKED ON JANUARY 5, 2015. THIRD REVISION DECEMBER 30, 2015 FOR HEEL AND BHL CHANGES.

LEGEND

- = EXISTING MONUMENT
- = PROPOSED WELL
- BH = BOTTOM HOLE
- (C) = CALCULATED
- ◆ = BOTTOM HOLE
- ▲ = HEEL LOCATION
- = CALCULATED POSITION



SHEET 2 OF 3

PREPARED BY:



FIELD DATE:

01-05-15

DRAWING DATE:

12-12-16

BY:

BMO

CHECKED:

CSG

SURFACE LOCATION:

SW 1/4 SE 1/4,

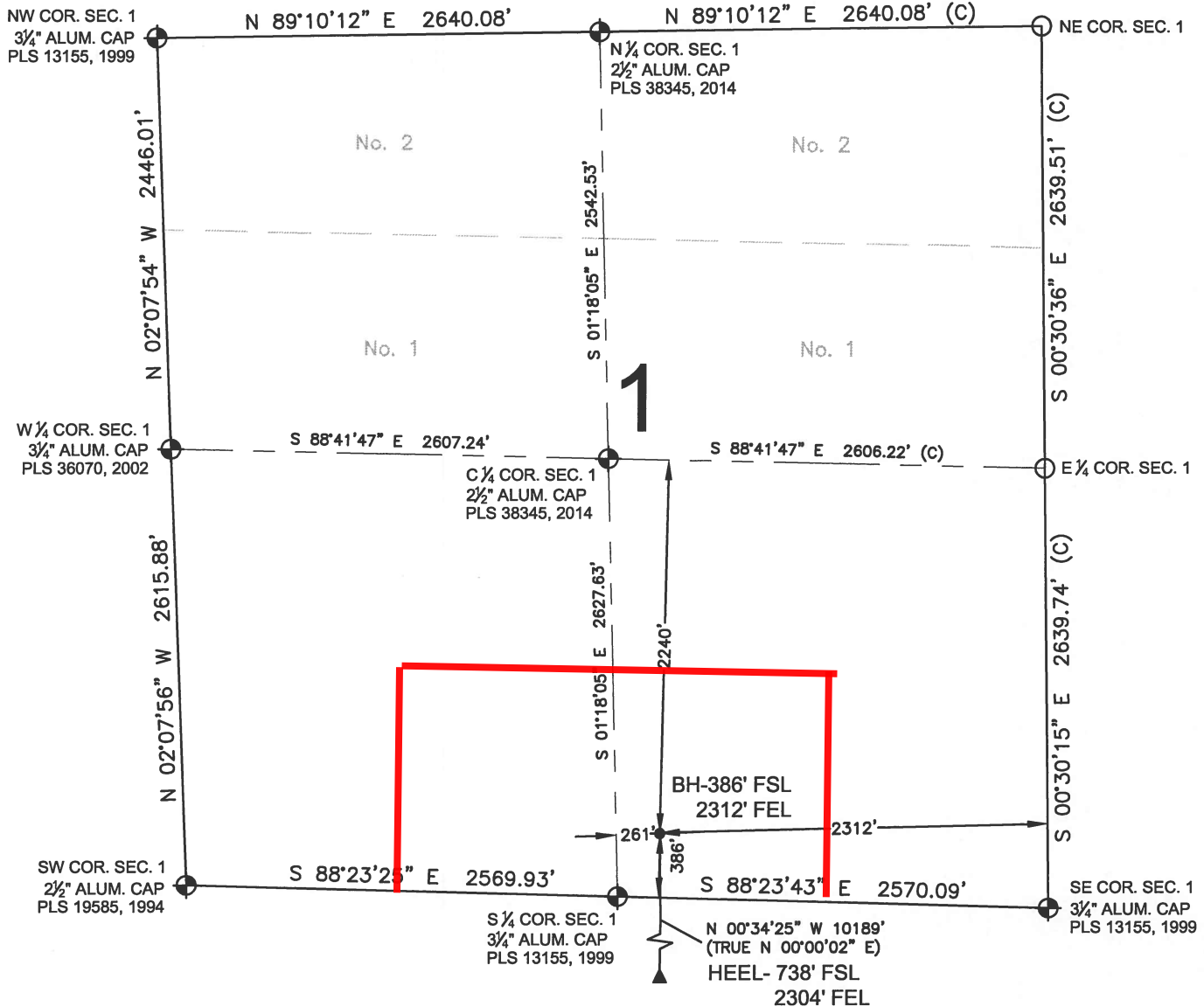
SEC. 13, T2N, R65W, 6TH P.M.

WELD COUNTY, COLORADO

NOTICE: ACCORDING TO COLORADO LAW YOU MUST COMMENCE ANY LEGAL ACTION BASED UPON ANY DEFECT IN THIS SURVEY WITHIN THREE YEARS AFTER YOU FIRST DISCOVER SUCH DEFECT. IN NO EVENT MAY ANY ACTION BASED UPON ANY DEFECT IN THIS SURVEY BE COMMENCED MORE THAN TEN YEARS FROM THIS SAID DATE OF THIS CERTIFICATION SHOWN HEREON.

WELL LOCATION CERTIFICATE: SWARTZ 28N-12HZ

SECTION 1, TOWNSHIP 2 NORTH, RANGE 65 WEST, 6TH P.M.



NOTES:

- THIS FIELD SURVEY CONFORMS TO THE MINIMUM STANDARDS SET BY THE C.O.G.C.C., RULE NO. 215
- BEARINGS ARE BASED ON THE ASSUMPTION THAT THE NORTH LINE OF THE NORTHEAST QUARTER OF SECTION 13, BEARS S89°36'50"E BETWEEN THE MONUMENTS DESCRIBED HEREON.
- GRID DISTANCES ARE SHOWN, AS MEASURED IN THE FIELD, WITH TIES TO WELLS MEASURED PERPENDICULAR TO SECTION LINES. TO GET GROUND DISTANCES MULTIPLY THE SHOWN DISTANCE BY 1.000272228.
- ALL LINES SHOWN THAT ARE WITHOUT DIMENSION SHOULD BE CONSIDERED SCALED AND ONLY REPRESENT A GRAPHICAL DEPICTION OF THE APPROXIMATE LOCATION OF SAID LINE.
- CERTIFIED AUGUST 4, 2015 FOR WELLS STAKED ON JANUARY 5, 2015. THIRD REVISION DECEMBER 30, 2016 FOR HEEL AND BHL CHANGES AND ADDITION OF SECTION 1. CORNERS ON THE EAST LINE OF SECTION 1 ARE CALCULATED DUE TO ROAD CONSTRUCTION AND WILL BE RESET BY THAT SURVEYOR AFTER CONSTRUCTION

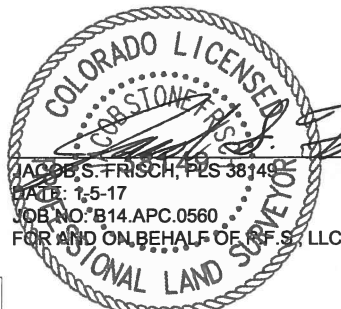
SHEET 3 OF 3

LEGEND

- = EXISTING MONUMENT
- = PROPOSED WELL
- BH = BOTTOM HOLE
- (C) = CALCULATED
- ◆ = BOTTOM HOLE
- ▲ = HEEL LOCATION
- = CALCULATED POSITION

0 500 1000

SCALE: 1"=1000'



NOTICE: ACCORDING TO COLORADO LAW YOU MUST COMMENCE ANY LEGAL ACTION BASED UPON ANY DEFECT IN THIS SURVEY WITHIN THREE YEARS AFTER YOU FIRST DISCOVER SUCH DEFECT. IN NO EVENT MAY ANY ACTION BASED UPON ANY DEFECT IN THIS SURVEY BE COMMENCED MORE THAN TEN YEARS FROM THIS SAID DATE OF THIS CERTIFICATION SHOWN HEREON.

PREPARED BY:



FIELD DATE:
01-05-15

DRAWING DATE:
12-12-16

BY: BMO
CHECKED: CSG

SURFACE LOCATION:

SW 1/4 SE 1/4,
SEC. 13, T2N, R65W, 6TH P.M.
WELD COUNTY, COLORADO