



photo 1: Facing south along the access road. There are signs of erosion along the road.

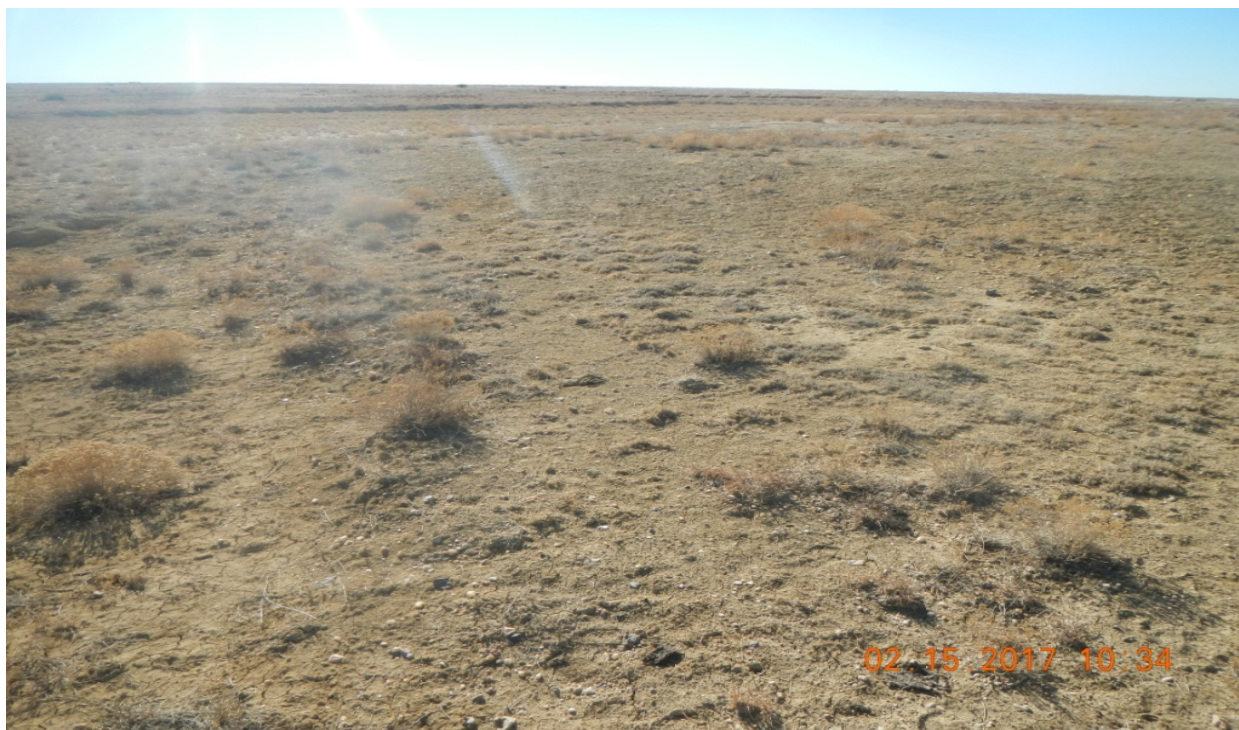


photo 2: Facing south toward the location.



photo 3: Facing west along the north fill slope.

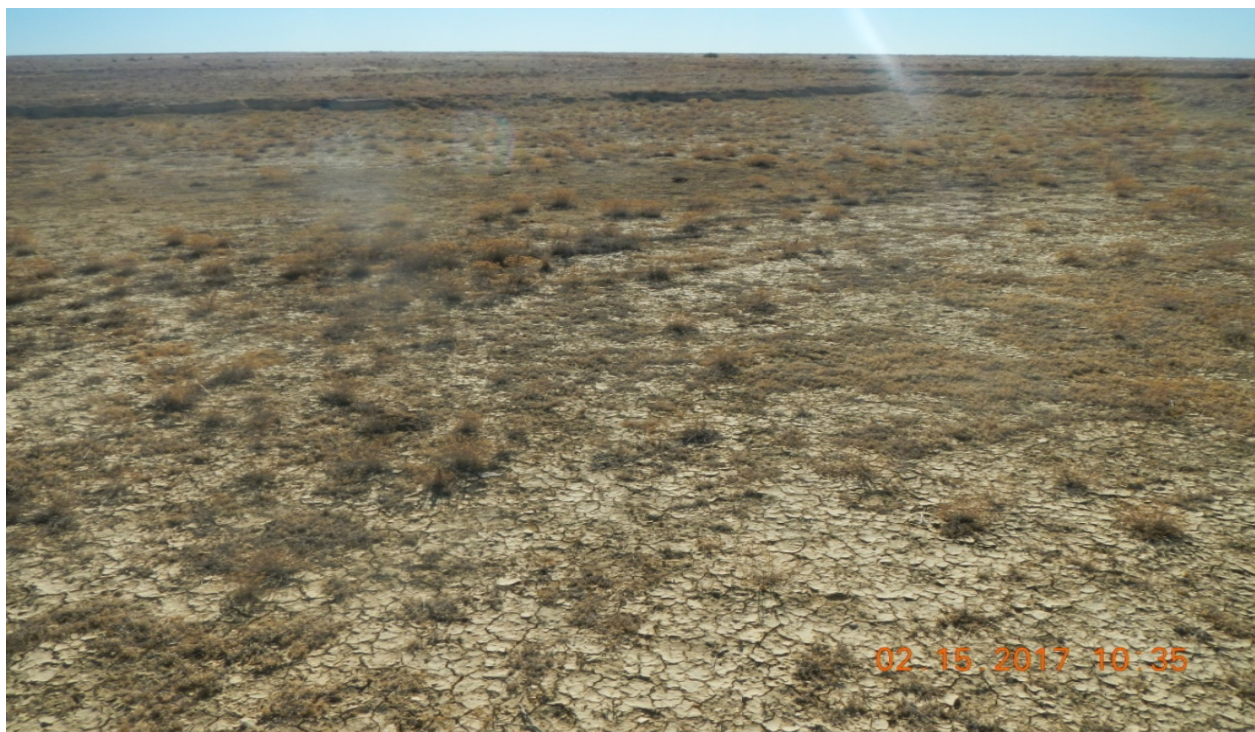


photo 4: Center of the location facing south.



photo 5: Facing east along the south cut slope.

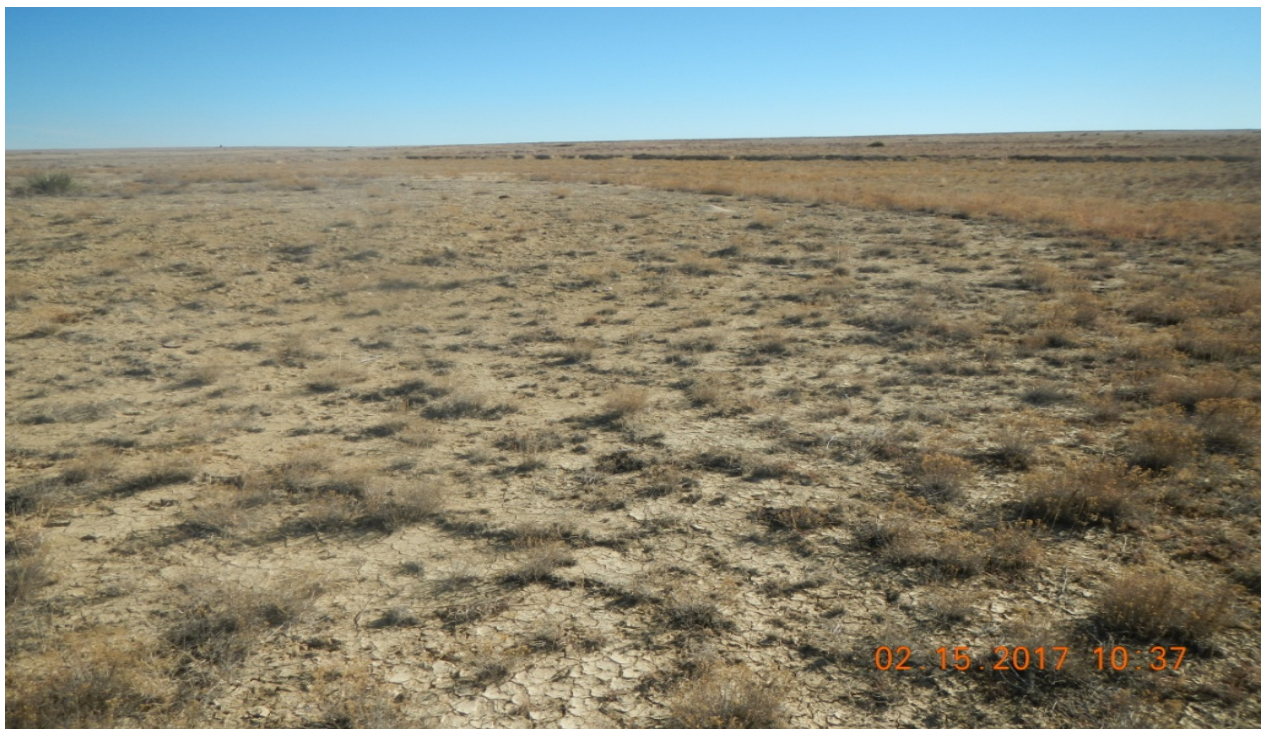


photo 6: Facing southwest toward the location.



photo 7: Facing north at the north side of the location. There is little to no vegetation establishment in this area.



photo 6: Facing west toward the surrounding undisturbed vegetation.



photo 6: Facing east toward the surrounding undisturbed vegetation.