

EXTRACTION OIL & GAS

WELD COUNTY, COLORADO (NAD 83)

SE NE SEC. 22 T6N R67W 6th P.M.

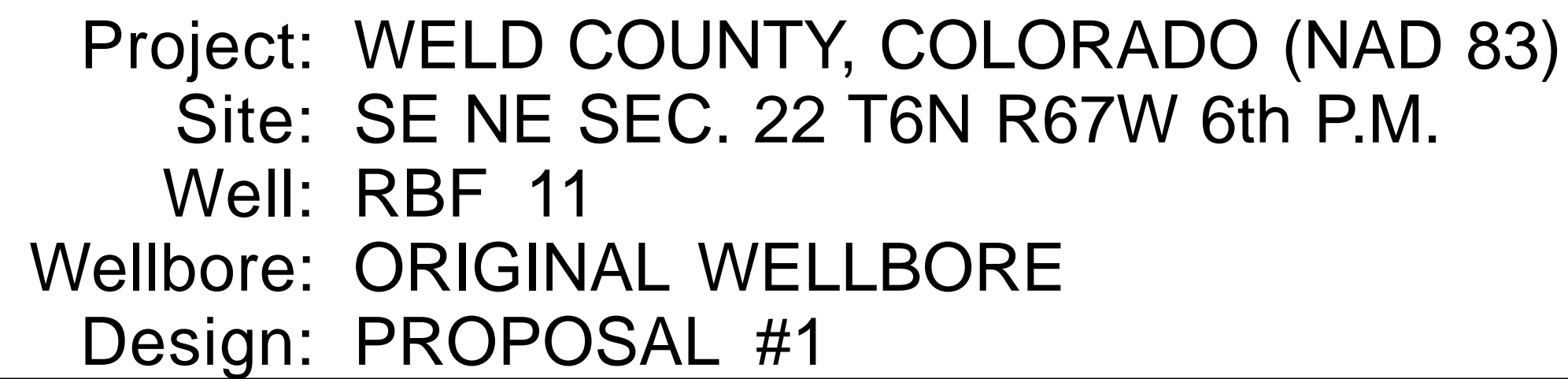
RBFB 11

ORIGINAL WELLBORE

25 October, 2016

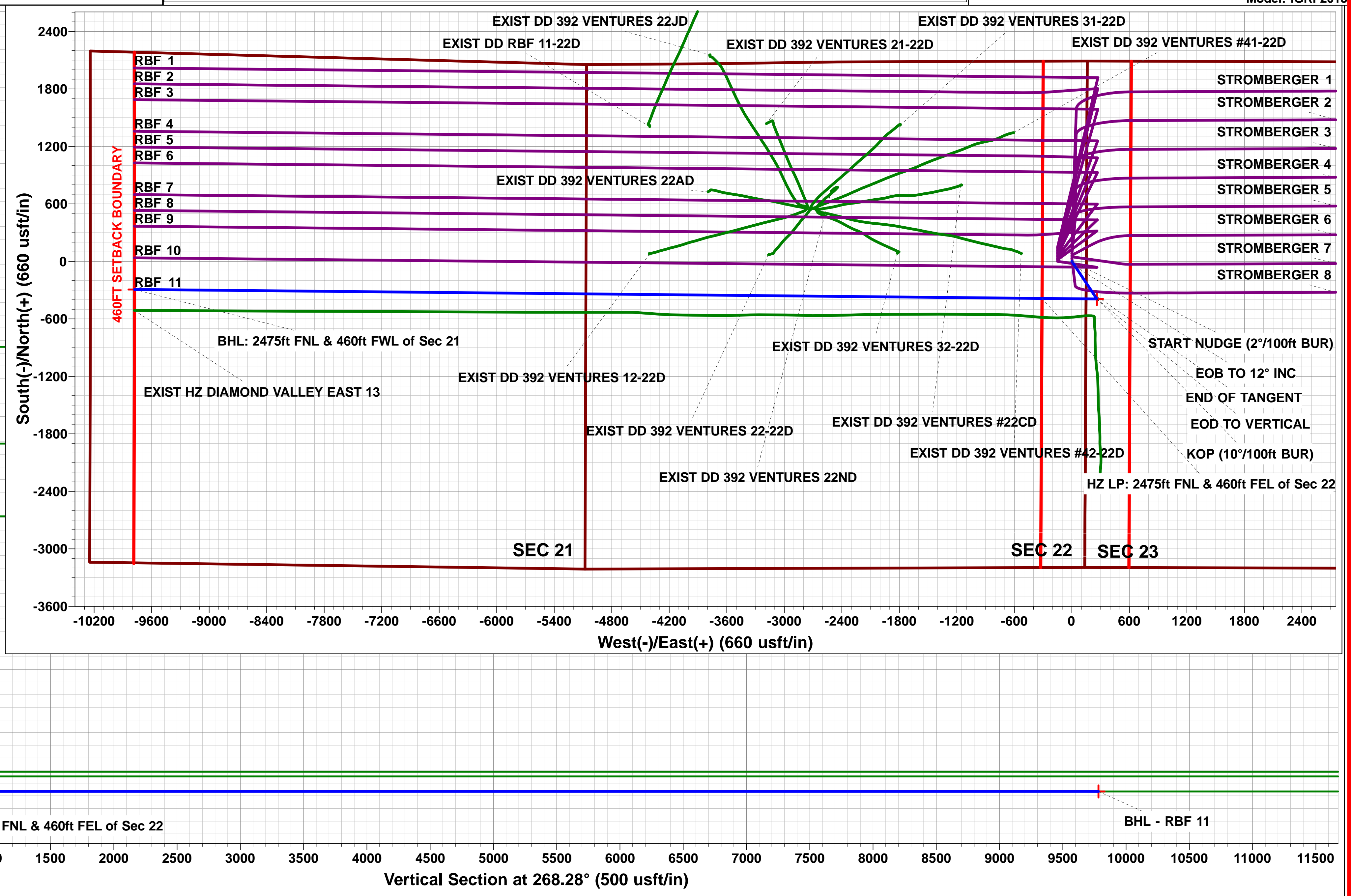
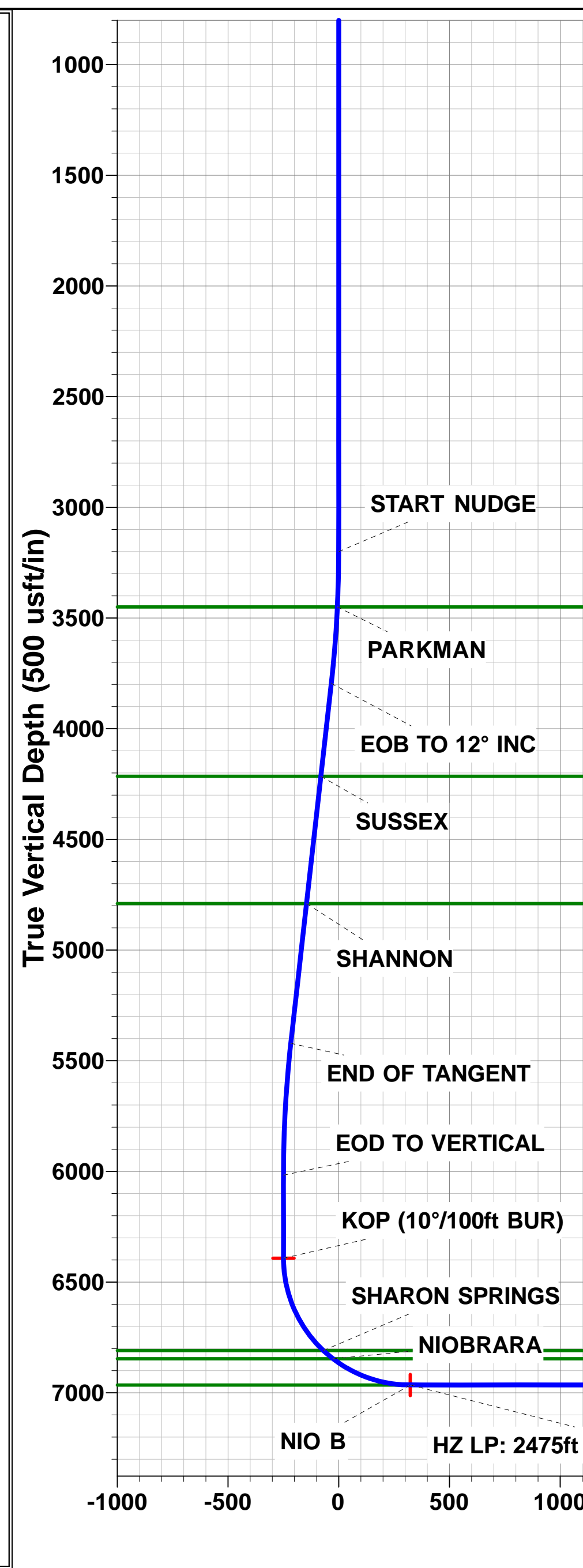
Plan: PROPOSAL #1





The plot displays the wellbore path in a vertical section. The Y-axis represents True Vertical Depth (250 usft/in) from 3250 to 6250. The X-axis represents the Vertical Section at 146.34° (250 usft/in) from -250 to 1250. The blue curve shows the wellbore path, which is nearly vertical until approximately 5500 usft depth, where it begins to curve. Key points and labels include:

- START NUDGE (2°/100ft BUR)**: Located at the top of the curve, near 3250 usft depth.
- PARKMAN**: A horizontal green line at approximately 3500 usft depth.
- EOB TO 12° INC**: A point on the curve at approximately 3750 usft depth.
- SUSSEX**: A horizontal green line at approximately 4250 usft depth.
- SHANNON**: A horizontal green line at approximately 4750 usft depth.
- END OF TANGENT**: A point on the curve at approximately 5500 usft depth.
- EOD TO VERTICAL**: A point on the curve at approximately 6000 usft depth.
- KOP (10°/100ft BUR)**: The Kick-off Point, marked with a red dot at the bottom of the curve, near 6250 usft depth.



Planning Report



Database:	EDM 5000.1 Single User Db	Local Co-ordinate Reference:	Well RBF 11
Company:	EXTRACTION OIL & GAS	TVD Reference:	KB-EST @ 4794.0usft (Original Well Elev)
Project:	WELD COUNTY, COLORADO (NAD 83)	MD Reference:	KB-EST @ 4794.0usft (Original Well Elev)
Site:	SE NE SEC. 22 T6N R67W 6th P.M.	North Reference:	True
Well:	RBF 11	Survey Calculation Method:	Minimum Curvature
Wellbore:	ORIGINAL WELLBORE		
Design:	PROPOSAL #1		

Project	WELD COUNTY, COLORADO (NAD 83)		
Map System:	US State Plane 1983	System Datum:	Mean Sea Level
Geo Datum:	North American Datum 1983		
Map Zone:	Colorado Northern Zone		Using geodetic scale factor

Site	SE NE SEC. 22 T6N R67W 6th P.M.		
Site Position:		Northing:	1,417,027.42 usft
From:	Lat/Long	Easting:	3,175,712.36 usft
Position Uncertainty:	0.0 usft	Slot Radius:	1.10000ft
		Latitude:	40.476424
		Longitude:	-104.868382
		Grid Convergence:	0.41 °

Well	RBF 11		
Well Position	+N/-S	-893.3 usft	Northing:
	+E/-W	-690.0 usft	Easting:
Position Uncertainty	0.0 usft	Wellhead Elevation:	usft
		Latitude:	40.473972
		Longitude:	-104.870862
		Ground Level:	4,778.0 usft

Wellbore	ORIGINAL WELLBORE				
Magnetics	Model Name	Sample Date	Declination (°)	Dip Angle (°)	Field Strength (nT)
	IGRF2015	25/10/2016	8.34	66.91	52,493

Design	PROPOSAL #1			
Audit Notes:				
Version:	Phase:	PROTOTYPE	Tie On Depth:	0.0
Vertical Section:	Depth From (TVD) (usft)	+N/-S (usft)	+E/-W (usft)	Direction (°)
	6,965.0	0.0	0.0	268.28

Plan Sections											
MD (usft)	Inc (°)	Azi (°)	Vertical Depth	SS (usft)	+N/-S (usft)	+E/-W (usft)	Dogleg Rate (°/100usft)	Build Rate (°/100usft)	Turn Rate (°/100usft)	TFO (°)	Target
0.0	0.00	0.00	0.0	-4,794.0	0.0	0.0	0.00	0.00	0.00	0.00	
3,200.0	0.00	0.00	3,200.0	-1,594.0	0.0	0.0	0.00	0.00	0.00	0.00	
3,800.1	12.00	146.34	3,795.8	-998.2	-52.1	34.7	2.00	2.00	0.00	146.34	
5,461.9	12.00	146.34	5,421.2	627.2	-339.8	226.3	0.00	0.00	0.00	0.00	
6,062.1	0.00	0.00	6,017.0	1,223.0	-391.9	261.0	2.00	-2.00	0.00	180.00	
6,437.1	0.00	0.00	6,392.0	1,598.0	-391.9	261.0	0.00	0.00	0.00	0.00	KOP - RBF 11
7,337.1	90.00	270.57	6,965.0	2,171.0	-386.2	-311.9	10.00	10.00	0.00	270.57	
16,803.7	90.00	270.56	6,965.0	2,171.0	-292.8	-9,778.0	0.00	0.00	0.00	-93.17	BHL - RBF 11

Database:	EDM 5000.1 Single User Db	Local Co-ordinate Reference:	Well RBF 11
Company:	EXTRACTION OIL & GAS	TVD Reference:	KB-EST @ 4794.0usft (Original Well Elev)
Project:	WELD COUNTY, COLORADO (NAD 83)	MD Reference:	KB-EST @ 4794.0usft (Original Well Elev)
Site:	SE NE SEC. 22 T6N R67W 6th P.M.	North Reference:	True
Well:	RBF 11	Survey Calculation Method:	Minimum Curvature
Wellbore:	ORIGINAL WELLBORE		
Design:	PROPOSAL #1		

Planned Survey

MD (usft)	Inc (°)	Azi (°)	TVD (usft)	SS (usft)	+N/-S (usft)	+E/-W (usft)	Vertical Section (usft)	Dogleg Rate (°/100usft)	Build Rate (°/100usft)	Turn Rate (°/100usft)
SHL: 2090ft FNL & 150ft FEL of Sec 22										
0.0	0.00	0.00	0.0	4,794.00	0.0	0.0	0.0	0.00	0.00	0.00
100.0	0.00	0.00	100.0	4,694.00	0.0	0.0	0.0	0.00	0.00	0.00
200.0	0.00	0.00	200.0	4,594.00	0.0	0.0	0.0	0.00	0.00	0.00
300.0	0.00	0.00	300.0	4,494.00	0.0	0.0	0.0	0.00	0.00	0.00
400.0	0.00	0.00	400.0	4,394.00	0.0	0.0	0.0	0.00	0.00	0.00
500.0	0.00	0.00	500.0	4,294.00	0.0	0.0	0.0	0.00	0.00	0.00
600.0	0.00	0.00	600.0	4,194.00	0.0	0.0	0.0	0.00	0.00	0.00
700.0	0.00	0.00	700.0	4,094.00	0.0	0.0	0.0	0.00	0.00	0.00
800.0	0.00	0.00	800.0	3,994.00	0.0	0.0	0.0	0.00	0.00	0.00
900.0	0.00	0.00	900.0	3,894.00	0.0	0.0	0.0	0.00	0.00	0.00
1,000.0	0.00	0.00	1,000.0	3,794.00	0.0	0.0	0.0	0.00	0.00	0.00
1,100.0	0.00	0.00	1,100.0	3,694.00	0.0	0.0	0.0	0.00	0.00	0.00
1,200.0	0.00	0.00	1,200.0	3,594.00	0.0	0.0	0.0	0.00	0.00	0.00
1,300.0	0.00	0.00	1,300.0	3,494.00	0.0	0.0	0.0	0.00	0.00	0.00
1,400.0	0.00	0.00	1,400.0	3,394.00	0.0	0.0	0.0	0.00	0.00	0.00
1,500.0	0.00	0.00	1,500.0	3,294.00	0.0	0.0	0.0	0.00	0.00	0.00
1,600.0	0.00	0.00	1,600.0	3,194.00	0.0	0.0	0.0	0.00	0.00	0.00
1,700.0	0.00	0.00	1,700.0	3,094.00	0.0	0.0	0.0	0.00	0.00	0.00
1,800.0	0.00	0.00	1,800.0	2,994.00	0.0	0.0	0.0	0.00	0.00	0.00
1,900.0	0.00	0.00	1,900.0	2,894.00	0.0	0.0	0.0	0.00	0.00	0.00
2,000.0	0.00	0.00	2,000.0	2,794.00	0.0	0.0	0.0	0.00	0.00	0.00
2,100.0	0.00	0.00	2,100.0	2,694.00	0.0	0.0	0.0	0.00	0.00	0.00
2,200.0	0.00	0.00	2,200.0	2,594.00	0.0	0.0	0.0	0.00	0.00	0.00
2,300.0	0.00	0.00	2,300.0	2,494.00	0.0	0.0	0.0	0.00	0.00	0.00
2,400.0	0.00	0.00	2,400.0	2,394.00	0.0	0.0	0.0	0.00	0.00	0.00
2,500.0	0.00	0.00	2,500.0	2,294.00	0.0	0.0	0.0	0.00	0.00	0.00
2,600.0	0.00	0.00	2,600.0	2,194.00	0.0	0.0	0.0	0.00	0.00	0.00
2,700.0	0.00	0.00	2,700.0	2,094.00	0.0	0.0	0.0	0.00	0.00	0.00
2,800.0	0.00	0.00	2,800.0	1,994.00	0.0	0.0	0.0	0.00	0.00	0.00
2,900.0	0.00	0.00	2,900.0	1,894.00	0.0	0.0	0.0	0.00	0.00	0.00
3,000.0	0.00	0.00	3,000.0	1,794.00	0.0	0.0	0.0	0.00	0.00	0.00
3,100.0	0.00	0.00	3,100.0	1,694.00	0.0	0.0	0.0	0.00	0.00	0.00
START NUDGE (2°/100ft BUR)										
3,200.0	0.00	0.00	3,200.0	1,594.00	0.0	0.0	0.0	0.00	0.00	0.00
3,300.0	2.00	146.34	3,300.0	1,494.02	-1.5	1.0	-0.9	2.00	2.00	0.00
3,400.0	4.00	146.34	3,399.8	1,394.16	-5.8	3.9	-3.7	2.00	2.00	0.00
PARKMAN										
3,450.3	5.01	146.34	3,450.0	1,344.00	-9.1	6.1	-5.8	2.00	2.00	0.00
3,500.0	6.00	146.34	3,499.5	1,294.55	-13.1	8.7	-8.3	2.00	2.00	0.00
3,600.0	8.00	146.34	3,598.7	1,195.30	-23.2	15.5	-14.8	2.00	2.00	0.00
3,700.0	10.00	146.34	3,697.5	1,096.53	-36.2	24.1	-23.0	2.00	2.00	0.00
3,800.0	12.00	146.34	3,795.6	998.38	-52.1	34.7	-33.1	2.00	2.00	0.00
EOB TO 12° INC										
3,800.1	12.00	146.34	3,795.8	998.23	-52.1	34.7	-33.1	2.00	2.00	0.00
3,900.0	12.00	146.34	3,893.4	900.56	-69.4	46.2	-44.1	0.00	0.00	0.00
4,000.0	12.00	146.34	3,991.3	802.75	-86.7	57.8	-55.1	0.00	0.00	0.00
4,100.0	12.00	146.34	4,089.1	704.94	-104.0	69.3	-66.1	0.00	0.00	0.00
4,200.0	12.00	146.34	4,186.9	607.12	-121.3	80.8	-77.1	0.00	0.00	0.00
SUSSEX										
4,228.8	12.00	146.34	4,215.0	579.00	-126.3	84.1	-80.3	0.00	0.00	0.00
4,300.0	12.00	146.34	4,284.7	509.31	-138.6	92.3	-88.1	0.00	0.00	0.00
4,400.0	12.00	146.34	4,382.5	411.49	-156.0	103.9	-99.2	0.00	0.00	0.00
4,500.0	12.00	146.34	4,480.3	313.68	-173.3	115.4	-110.2	0.00	0.00	0.00

Database:	EDM 5000.1 Single User Db	Local Co-ordinate Reference:	Well RBF 11
Company:	EXTRACTION OIL & GAS	TVD Reference:	KB-EST @ 4794.0usft (Original Well Elev)
Project:	WELD COUNTY, COLORADO (NAD 83)	MD Reference:	KB-EST @ 4794.0usft (Original Well Elev)
Site:	SE NE SEC. 22 T6N R67W 6th P.M.	North Reference:	True
Well:	RBF 11	Survey Calculation Method:	Minimum Curvature
Wellbore:	ORIGINAL WELLBORE		
Design:	PROPOSAL #1		

Planned Survey

MD (usft)	Inc (°)	Azi (°)	TVD (usft)	SS (usft)	+N/-S (usft)	+E/-W (usft)	Vertical Section (usft)	Dogleg Rate (°/100usft)	Build Rate (°/100usft)	Turn Rate (°/100usft)
4,600.0	12.00	146.34	4,578.1	215.87	-190.6	126.9	-121.2	0.00	0.00	0.00
4,700.0	12.00	146.34	4,675.9	118.05	-207.9	138.4	-132.2	0.00	0.00	0.00
4,800.0	12.00	146.34	4,773.8	20.24	-225.2	150.0	-143.2	0.00	0.00	0.00
SHANNON										
4,816.6	12.00	146.34	4,790.0	4.00	-228.1	151.9	-145.0	0.00	0.00	0.00
4,900.0	12.00	146.34	4,871.6	-77.57	-242.5	161.5	-154.2	0.00	0.00	0.00
5,000.0	12.00	146.34	4,969.4	-175.39	-259.8	173.0	-165.2	0.00	0.00	0.00
5,100.0	12.00	146.34	5,067.2	-273.20	-277.1	184.6	-176.2	0.00	0.00	0.00
5,200.0	12.00	146.34	5,165.0	-371.01	-294.4	196.1	-187.2	0.00	0.00	0.00
5,300.0	12.00	146.34	5,262.8	-468.83	-311.7	207.6	-198.2	0.00	0.00	0.00
5,400.0	12.00	146.34	5,360.6	-566.64	-329.0	219.1	-209.2	0.00	0.00	0.00
END OF TANGENT										
5,461.9	12.00	146.34	5,421.2	-627.23	-339.8	226.3	-216.0	0.00	0.00	0.00
5,500.0	11.24	146.34	5,458.5	-664.51	-346.2	230.5	-220.1	2.00	-2.00	0.00
5,600.0	9.24	146.34	5,556.9	-762.91	-360.9	240.4	-229.5	2.00	-2.00	0.00
5,700.0	7.24	146.34	5,655.9	-861.87	-372.9	248.3	-237.1	2.00	-2.00	0.00
5,800.0	5.24	146.34	5,755.3	-961.27	-381.9	254.4	-242.8	2.00	-2.00	0.00
5,900.0	3.24	146.34	5,855.0	-1,060.99	-388.1	258.5	-246.7	2.00	-2.00	0.00
6,000.0	1.24	146.34	5,954.9	-1,160.91	-391.3	260.6	-248.8	2.00	-2.00	0.00
EOD TO VERTICAL										
6,062.1	0.00	0.00	6,017.0	-1,223.00	-391.9	261.0	-249.2	2.00	-2.00	0.00
6,100.0	0.00	0.00	6,054.9	-1,260.91	-391.9	261.0	-249.2	0.00	0.00	0.00
6,200.0	0.00	0.00	6,154.9	-1,360.91	-391.9	261.0	-249.2	0.00	0.00	0.00
6,300.0	0.00	0.00	6,254.9	-1,460.91	-391.9	261.0	-249.2	0.00	0.00	0.00
6,400.0	0.00	0.00	6,354.9	-1,560.91	-391.9	261.0	-249.2	0.00	0.00	0.00
KOP (10°/100ft BUR)										
6,437.1	0.00	0.00	6,392.0	-1,598.00	-391.9	261.0	-249.2	0.00	0.00	0.00
6,500.0	6.29	270.57	6,454.8	-1,660.78	-391.9	257.6	-245.7	10.00	10.00	0.00
6,600.0	16.29	270.57	6,552.7	-1,758.72	-391.7	238.0	-226.2	10.00	10.00	0.00
6,700.0	26.29	270.57	6,645.8	-1,851.78	-391.3	201.7	-189.9	10.00	10.00	0.00
6,800.0	36.29	270.57	6,731.1	-1,937.12	-390.8	149.9	-138.1	10.00	10.00	0.00
6,900.0	46.29	270.57	6,806.2	-2,012.17	-390.1	84.0	-72.2	10.00	10.00	0.00
SHARON SPRINGS										
6,904.1	46.70	270.57	6,809.0	-2,015.00	-390.1	81.0	-69.3	10.00	10.00	0.00
NIOBRARA										
6,961.2	52.41	270.57	6,846.0	-2,052.00	-389.7	37.6	-25.9	10.00	10.00	0.00
7,000.0	56.29	270.57	6,868.6	-2,074.62	-389.4	6.0	5.6	10.00	10.00	0.00
7,100.0	66.29	270.57	6,916.6	-2,122.60	-388.5	-81.6	93.1	10.00	10.00	0.00
7,200.0	76.29	270.57	6,948.6	-2,154.63	-387.6	-176.1	187.7	10.00	10.00	0.00
7,300.0	86.29	270.57	6,963.8	-2,169.76	-386.6	-274.9	286.3	10.00	10.00	0.00
HZ LP: 2475ft FNL & 460ft FEL of Sec 22 - NIO B										
7,337.1	90.00	270.57	6,965.0	-2,171.00	-386.2	-311.9	323.3	10.00	10.00	0.00
7,400.0	90.00	270.57	6,965.0	-2,170.96	-385.6	-374.8	386.2	0.00	0.00	0.00
7,500.0	90.00	270.57	6,965.0	-2,170.96	-384.6	-474.8	486.1	0.00	0.00	0.00
7,600.0	90.00	270.57	6,965.0	-2,170.96	-383.6	-574.8	586.0	0.00	0.00	0.00
7,700.0	90.00	270.57	6,965.0	-2,170.96	-382.6	-674.8	686.0	0.00	0.00	0.00
7,800.0	90.00	270.57	6,965.0	-2,170.96	-381.6	-774.8	785.9	0.00	0.00	0.00
7,900.0	90.00	270.57	6,965.0	-2,170.96	-380.6	-874.8	885.8	0.00	0.00	0.00
8,000.0	90.00	270.57	6,965.0	-2,170.96	-379.6	-974.8	985.7	0.00	0.00	0.00
8,100.0	90.00	270.57	6,965.0	-2,170.96	-378.6	-1,074.8	1,085.6	0.00	0.00	0.00
8,200.0	90.00	270.57	6,965.0	-2,170.96	-377.6	-1,174.8	1,185.6	0.00	0.00	0.00
8,300.0	90.00	270.57	6,965.0	-2,170.96	-376.6	-1,274.8	1,285.5	0.00	0.00	0.00
8,400.0	90.00	270.57	6,965.0	-2,170.96	-375.6	-1,374.8	1,385.4	0.00	0.00	0.00

Planning Report



Database:	EDM 5000.1 Single User Db	Local Co-ordinate Reference:	Well RBF 11
Company:	EXTRACTION OIL & GAS	TVD Reference:	KB-EST @ 4794.0usft (Original Well Elev)
Project:	WELD COUNTY, COLORADO (NAD 83)	MD Reference:	KB-EST @ 4794.0usft (Original Well Elev)
Site:	SE NE SEC. 22 T6N R67W 6th P.M.	North Reference:	True
Well:	RBF 11	Survey Calculation Method:	Minimum Curvature
Wellbore:	ORIGINAL WELLBORE		
Design:	PROPOSAL #1		

Planned Survey										
MD (usft)	Inc (°)	Azi (°)	TVD (usft)	SS (usft)	+N/-S (usft)	+E/-W (usft)	Vertical Section (usft)	Dogleg Rate (°/100usft)	Build Rate (°/100usft)	Turn Rate (°/100usft)
8,500.0	90.00	270.57	6,965.0	-2,170.96	-374.6	-1,474.8	1,485.3	0.00	0.00	0.00
8,600.0	90.00	270.57	6,965.0	-2,170.96	-373.6	-1,574.8	1,585.3	0.00	0.00	0.00
8,700.0	90.00	270.57	6,965.0	-2,170.96	-372.7	-1,674.8	1,685.2	0.00	0.00	0.00
8,800.0	90.00	270.57	6,965.0	-2,170.96	-371.7	-1,774.8	1,785.1	0.00	0.00	0.00
8,900.0	90.00	270.57	6,965.0	-2,170.96	-370.7	-1,874.8	1,885.0	0.00	0.00	0.00
9,000.0	90.00	270.57	6,965.0	-2,170.96	-369.7	-1,974.8	1,984.9	0.00	0.00	0.00
9,100.0	90.00	270.57	6,965.0	-2,170.96	-368.7	-2,074.8	2,084.9	0.00	0.00	0.00
9,200.0	90.00	270.57	6,965.0	-2,170.96	-367.7	-2,174.7	2,184.8	0.00	0.00	0.00
9,300.0	90.00	270.57	6,965.0	-2,170.96	-366.7	-2,274.7	2,284.7	0.00	0.00	0.00
9,400.0	90.00	270.57	6,965.0	-2,170.96	-365.7	-2,374.7	2,384.6	0.00	0.00	0.00
9,500.0	90.00	270.57	6,965.0	-2,170.96	-364.7	-2,474.7	2,484.5	0.00	0.00	0.00
9,600.0	90.00	270.57	6,965.0	-2,170.96	-363.7	-2,574.7	2,584.5	0.00	0.00	0.00
9,700.0	90.00	270.57	6,965.0	-2,170.96	-362.7	-2,674.7	2,684.4	0.00	0.00	0.00
9,800.0	90.00	270.57	6,965.0	-2,170.96	-361.8	-2,774.7	2,784.3	0.00	0.00	0.00
9,900.0	90.00	270.57	6,965.0	-2,170.96	-360.8	-2,874.7	2,884.2	0.00	0.00	0.00
10,000.0	90.00	270.57	6,965.0	-2,170.96	-359.8	-2,974.7	2,984.1	0.00	0.00	0.00
10,100.0	90.00	270.57	6,965.0	-2,170.96	-358.8	-3,074.7	3,084.1	0.00	0.00	0.00
10,200.0	90.00	270.57	6,965.0	-2,170.96	-357.8	-3,174.7	3,184.0	0.00	0.00	0.00
10,300.0	90.00	270.57	6,965.0	-2,170.96	-356.8	-3,274.7	3,283.9	0.00	0.00	0.00
10,400.0	90.00	270.57	6,965.0	-2,170.96	-355.8	-3,374.7	3,383.8	0.00	0.00	0.00
10,500.0	90.00	270.57	6,965.0	-2,170.96	-354.8	-3,474.7	3,483.7	0.00	0.00	0.00
10,600.0	90.00	270.57	6,965.0	-2,170.96	-353.8	-3,574.7	3,583.7	0.00	0.00	0.00
10,700.0	90.00	270.57	6,965.0	-2,170.96	-352.8	-3,674.7	3,683.6	0.00	0.00	0.00
10,800.0	90.00	270.57	6,965.0	-2,170.96	-351.9	-3,774.7	3,783.5	0.00	0.00	0.00
10,900.0	90.00	270.57	6,965.0	-2,170.96	-350.9	-3,874.7	3,883.4	0.00	0.00	0.00
11,000.0	90.00	270.57	6,965.0	-2,170.96	-349.9	-3,974.7	3,983.3	0.00	0.00	0.00
11,100.0	90.00	270.57	6,965.0	-2,170.96	-348.9	-4,074.7	4,083.3	0.00	0.00	0.00
11,200.0	90.00	270.57	6,965.0	-2,170.96	-347.9	-4,174.6	4,183.2	0.00	0.00	0.00
11,300.0	90.00	270.57	6,965.0	-2,170.97	-346.9	-4,274.6	4,283.1	0.00	0.00	0.00
11,400.0	90.00	270.57	6,965.0	-2,170.97	-345.9	-4,374.6	4,383.0	0.00	0.00	0.00
11,500.0	90.00	270.57	6,965.0	-2,170.97	-344.9	-4,474.6	4,483.0	0.00	0.00	0.00
11,600.0	90.00	270.57	6,965.0	-2,170.97	-343.9	-4,574.6	4,582.9	0.00	0.00	0.00
11,700.0	90.00	270.57	6,965.0	-2,170.97	-343.0	-4,674.6	4,682.8	0.00	0.00	0.00
11,800.0	90.00	270.57	6,965.0	-2,170.97	-342.0	-4,774.6	4,782.7	0.00	0.00	0.00
11,900.0	90.00	270.57	6,965.0	-2,170.97	-341.0	-4,874.6	4,882.6	0.00	0.00	0.00
12,000.0	90.00	270.57	6,965.0	-2,170.97	-340.0	-4,974.6	4,982.6	0.00	0.00	0.00
12,100.0	90.00	270.57	6,965.0	-2,170.97	-339.0	-5,074.6	5,082.5	0.00	0.00	0.00
12,200.0	90.00	270.57	6,965.0	-2,170.97	-338.0	-5,174.6	5,182.4	0.00	0.00	0.00
12,300.0	90.00	270.57	6,965.0	-2,170.97	-337.0	-5,274.6	5,282.3	0.00	0.00	0.00
12,400.0	90.00	270.57	6,965.0	-2,170.97	-336.1	-5,374.6	5,382.2	0.00	0.00	0.00
12,500.0	90.00	270.56	6,965.0	-2,170.97	-335.1	-5,474.6	5,482.2	0.00	0.00	0.00
12,600.0	90.00	270.56	6,965.0	-2,170.97	-334.1	-5,574.6	5,582.1	0.00	0.00	0.00
12,700.0	90.00	270.56	6,965.0	-2,170.97	-333.1	-5,674.6	5,682.0	0.00	0.00	0.00
12,800.0	90.00	270.56	6,965.0	-2,170.97	-332.1	-5,774.6	5,781.9	0.00	0.00	0.00
12,900.0	90.00	270.56	6,965.0	-2,170.97	-331.1	-5,874.6	5,881.8	0.00	0.00	0.00
13,000.0	90.00	270.56	6,965.0	-2,170.97	-330.1	-5,974.6	5,981.8	0.00	0.00	0.00
13,100.0	90.00	270.56	6,965.0	-2,170.97	-329.2	-6,074.6	6,081.7	0.00	0.00	0.00
13,200.0	90.00	270.56	6,965.0	-2,170.97	-328.2	-6,174.5	6,181.6	0.00	0.00	0.00
13,300.0	90.00	270.56	6,965.0	-2,170.97	-327.2	-6,274.5	6,281.5	0.00	0.00	0.00
13,400.0	90.00	270.56	6,965.0	-2,170.98	-326.2	-6,374.5	6,381.4	0.00	0.00	0.00
13,500.0	90.00	270.56	6,965.0	-2,170.98	-325.2	-6,474.5	6,481.4	0.00	0.00	0.00
13,600.0	90.00	270.56	6,965.0	-2,170.98	-324.2	-6,574.5	6,581.3	0.00	0.00	0.00
13,700.0	90.00	270.56	6,965.0	-2,170.98	-323.2	-6,674.5	6,681.2	0.00	0.00	0.00
13,800.0	90.00	270.56	6,965.0	-2,170.98	-322.3	-6,774.5	6,781.1	0.00	0.00	0.00

Database:	EDM 5000.1 Single User Db	Local Co-ordinate Reference:	Well RBF 11
Company:	EXTRACTION OIL & GAS	TVD Reference:	KB-EST @ 4794.0usft (Original Well Elev)
Project:	WELD COUNTY, COLORADO (NAD 83)	MD Reference:	KB-EST @ 4794.0usft (Original Well Elev)
Site:	SE NE SEC. 22 T6N R67W 6th P.M.	North Reference:	True
Well:	RBF 11	Survey Calculation Method:	Minimum Curvature
Wellbore:	ORIGINAL WELLBORE		
Design:	PROPOSAL #1		

Planned Survey

MD (usft)	Inc (°)	Azi (°)	TVD (usft)	SS (usft)	+N/-S (usft)	+E/-W (usft)	Vertical Section (usft)	Dogleg Rate (°/100usft)	Build Rate (°/100usft)	Turn Rate (°/100usft)
13,900.0	90.00	270.56	6,965.0	-2,170.98	-321.3	-6,874.5	6,881.1	0.00	0.00	0.00
14,000.0	90.00	270.56	6,965.0	-2,170.98	-320.3	-6,974.5	6,981.0	0.00	0.00	0.00
14,100.0	90.00	270.56	6,965.0	-2,170.98	-319.3	-7,074.5	7,080.9	0.00	0.00	0.00
14,200.0	90.00	270.56	6,965.0	-2,170.98	-318.3	-7,174.5	7,180.8	0.00	0.00	0.00
14,300.0	90.00	270.56	6,965.0	-2,170.98	-317.3	-7,274.5	7,280.7	0.00	0.00	0.00
14,400.0	90.00	270.56	6,965.0	-2,170.98	-316.4	-7,374.5	7,380.7	0.00	0.00	0.00
14,500.0	90.00	270.56	6,965.0	-2,170.98	-315.4	-7,474.5	7,480.6	0.00	0.00	0.00
14,600.0	90.00	270.56	6,965.0	-2,170.98	-314.4	-7,574.5	7,580.5	0.00	0.00	0.00
14,700.0	90.00	270.56	6,965.0	-2,170.98	-313.4	-7,674.5	7,680.4	0.00	0.00	0.00
14,800.0	90.00	270.56	6,965.0	-2,170.98	-312.4	-7,774.5	7,780.3	0.00	0.00	0.00
14,900.0	90.00	270.56	6,965.0	-2,170.98	-311.4	-7,874.5	7,880.3	0.00	0.00	0.00
15,000.0	90.00	270.56	6,965.0	-2,170.99	-310.5	-7,974.5	7,980.2	0.00	0.00	0.00
15,100.0	90.00	270.56	6,965.0	-2,170.99	-309.5	-8,074.5	8,080.1	0.00	0.00	0.00
15,200.0	90.00	270.56	6,965.0	-2,170.99	-308.5	-8,174.5	8,180.0	0.00	0.00	0.00
15,300.0	90.00	270.56	6,965.0	-2,170.99	-307.5	-8,274.4	8,279.9	0.00	0.00	0.00
15,400.0	90.00	270.56	6,965.0	-2,170.99	-306.5	-8,374.4	8,379.9	0.00	0.00	0.00
15,500.0	90.00	270.56	6,965.0	-2,170.99	-305.6	-8,474.4	8,479.8	0.00	0.00	0.00
15,600.0	90.00	270.56	6,965.0	-2,170.99	-304.6	-8,574.4	8,579.7	0.00	0.00	0.00
15,700.0	90.00	270.56	6,965.0	-2,170.99	-303.6	-8,674.4	8,679.6	0.00	0.00	0.00
15,800.0	90.00	270.56	6,965.0	-2,170.99	-302.6	-8,774.4	8,779.6	0.00	0.00	0.00
15,900.0	90.00	270.56	6,965.0	-2,170.99	-301.6	-8,874.4	8,879.5	0.00	0.00	0.00
16,000.0	90.00	270.56	6,965.0	-2,170.99	-300.7	-8,974.4	8,979.4	0.00	0.00	0.00
16,100.0	90.00	270.56	6,965.0	-2,170.99	-299.7	-9,074.4	9,079.3	0.00	0.00	0.00
16,200.0	90.00	270.56	6,965.0	-2,170.99	-298.7	-9,174.4	9,179.2	0.00	0.00	0.00
16,300.0	90.00	270.56	6,965.0	-2,171.00	-297.7	-9,274.4	9,279.2	0.00	0.00	0.00
16,400.0	90.00	270.56	6,965.0	-2,171.00	-296.7	-9,374.4	9,379.1	0.00	0.00	0.00
16,500.0	90.00	270.56	6,965.0	-2,171.00	-295.8	-9,474.4	9,479.0	0.00	0.00	0.00
16,600.0	90.00	270.56	6,965.0	-2,171.00	-294.8	-9,574.4	9,578.9	0.00	0.00	0.00
16,700.0	90.00	270.56	6,965.0	-2,171.00	-293.8	-9,674.4	9,678.8	0.00	0.00	0.00
16,800.0	90.00	270.56	6,965.0	-2,171.00	-292.8	-9,774.4	9,778.8	0.00	0.00	0.00
BHL: 2475ft FNL & 460ft FWL of Sec 21										
16,803.7	90.00	270.56	6,965.0	-2,171.00	-292.8	-9,778.0	9,782.4	0.00	0.00	0.00

Formations

MD (usft)	TVD (usft)	Name	Lithology	Dip (°)	Dip Direction (°)
3,450.3	3,450.0	PARKMAN			
4,228.8	4,215.0	SUSSEX			
4,816.6	4,790.0	SHANNON			
6,904.1	6,809.0	SHARON SPRINGS			
6,961.2	6,846.0	NIOBRARA			
7,337.1	6,965.0	NIO B			

Database:	EDM 5000.1 Single User Db	Local Co-ordinate Reference:	Well RBF 11
Company:	EXTRACTION OIL & GAS	TVD Reference:	KB-EST @ 4794.0usft (Original Well Elev)
Project:	WELD COUNTY, COLORADO (NAD 83)	MD Reference:	KB-EST @ 4794.0usft (Original Well Elev)
Site:	SE NE SEC. 22 T6N R67W 6th P.M.	North Reference:	True
Well:	RBF 11	Survey Calculation Method:	Minimum Curvature
Wellbore:	ORIGINAL WELLBORE		
Design:	PROPOSAL #1		

Plan Annotations

MD (usft)	TVD (usft)	Local Coordinates		Comment
		+N/-S (usft)	+E/-W (usft)	
0.0	0.0	0.0	0.0	SHL: 2090ft FNL & 150ft FEL of Sec 22
3,200.0	3,200.0	0.0	0.0	START NUDGE (2°/100ft BUR)
3,800.1	3,795.8	-52.1	34.7	EOB TO 12° INC
5,461.9	5,421.2	-339.8	226.3	END OF TANGENT
6,062.1	6,017.0	-391.9	261.0	EOD TO VERTICAL
6,437.1	6,392.0	-391.9	261.0	KOP (10°/100ft BUR)
7,337.1	6,965.0	-386.2	-311.9	HZ LP: 2475ft FNL & 460ft FEL of Sec 22
16,803.7	6,965.0	-292.8	-9,778.0	BHL: 2475ft FNL & 460ft FWL of Sec 21