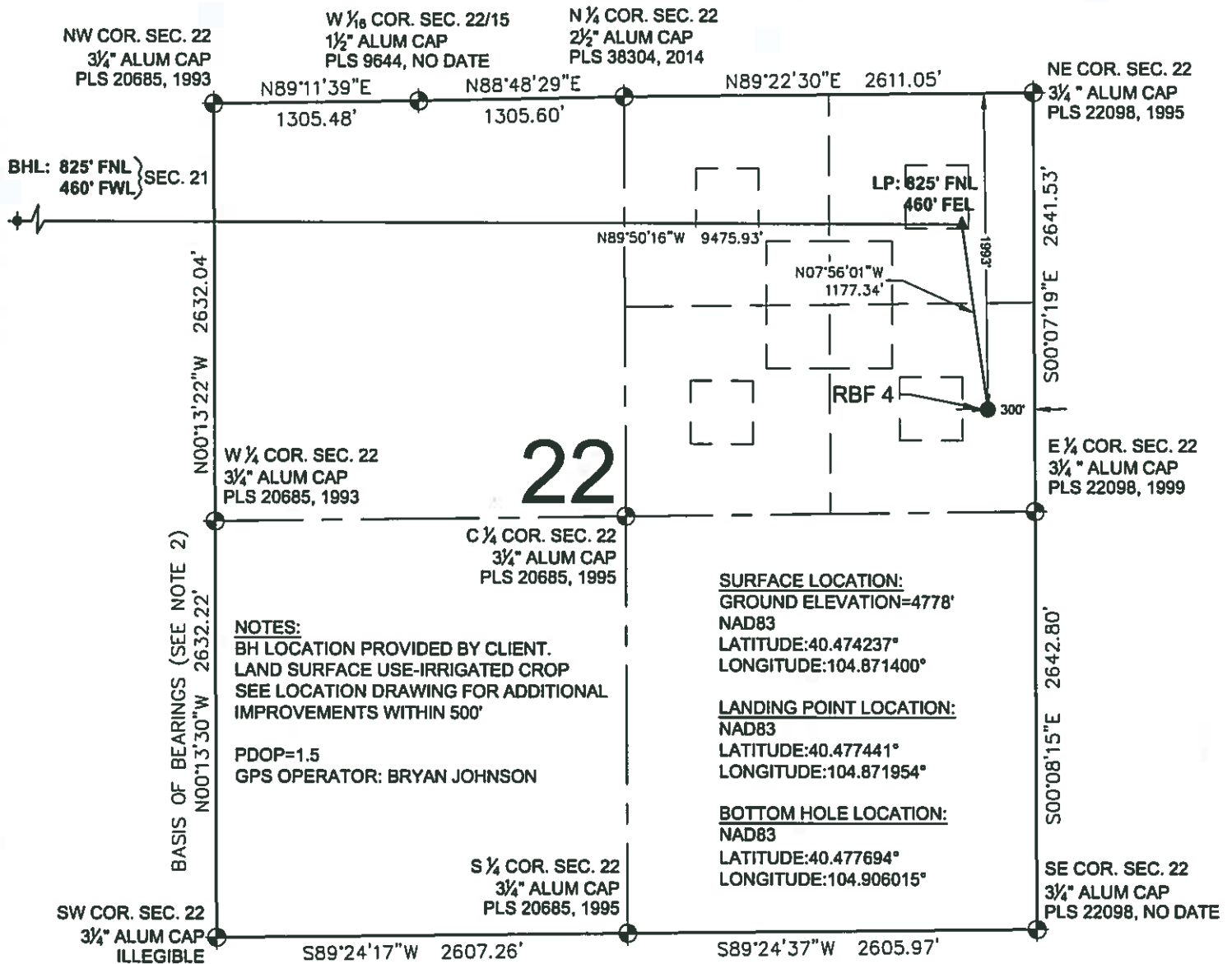


RBF 4
WELL LOCATION CERTIFICATE



LEGEND

- ⊕ = EXISTING MONUMENT ♦ = BOTTOM HOLE
○ = CALCULATED POSITION ▲ = LANDING POINT
● = PROPOSED WELL LP = LANDING POINT
◆ = EXISTING WELL BHL = BOTTOM HOLE LOCATION

WELL RBF 4 TO BE LOCATED
1993' FNL & 300' FEL



NOTES:

1. THIS FIELD SURVEY CONFORMS TO THE MINIMUM STANDARDS SET BY THE C.O.G.C.C., RULE NO. 215
2. BEARINGS AND DISTANCE SHOWN HEREON ARE GRID AND BASED ON THE COLORADO STATE PLANE COORDINATE SYSTEM, NAD 83/2011 BETWEEN MONUMENTS AS LABELED HEREON AND ELEVATIONS SHOWN ARE NAVD 88, AS DERIVED BY GPS OBSERVATIONS.
3. GRID DISTANCES ARE SHOWN, AS MEASURED IN THE FIELD, WITH TIES TO WELLS MEASURED PERPENDICULAR TO SECTION LINES.

I, MICHAEL L. POOL, A LICENSED PROFESSIONAL LAND SURVEYOR IN THE STATE OF COLORADO DO HEREBY CERTIFY TO EXTRACTION OIL & GAS, THAT THE SURVEY AND WELL LOCATION CERTIFICATE SHOWN HEREON WERE DONE BY ME OR UNDER MY DIRECT SUPERVISION AND THAT THE DRAWING SHOWN HEREON ACCURATELY DEPICTS THE PROPOSED LOCATION OF THE WELL. THIS CERTIFICATE DOES NOT REPRESENT A LAND SURVEY PLAT OR IMPROVEMENT SURVEY PLAT AS DEFINED BY C.R.S. 38-51-102 AND CANNOT BE RELIED UPON TO DETERMINE OWNERSHIP.

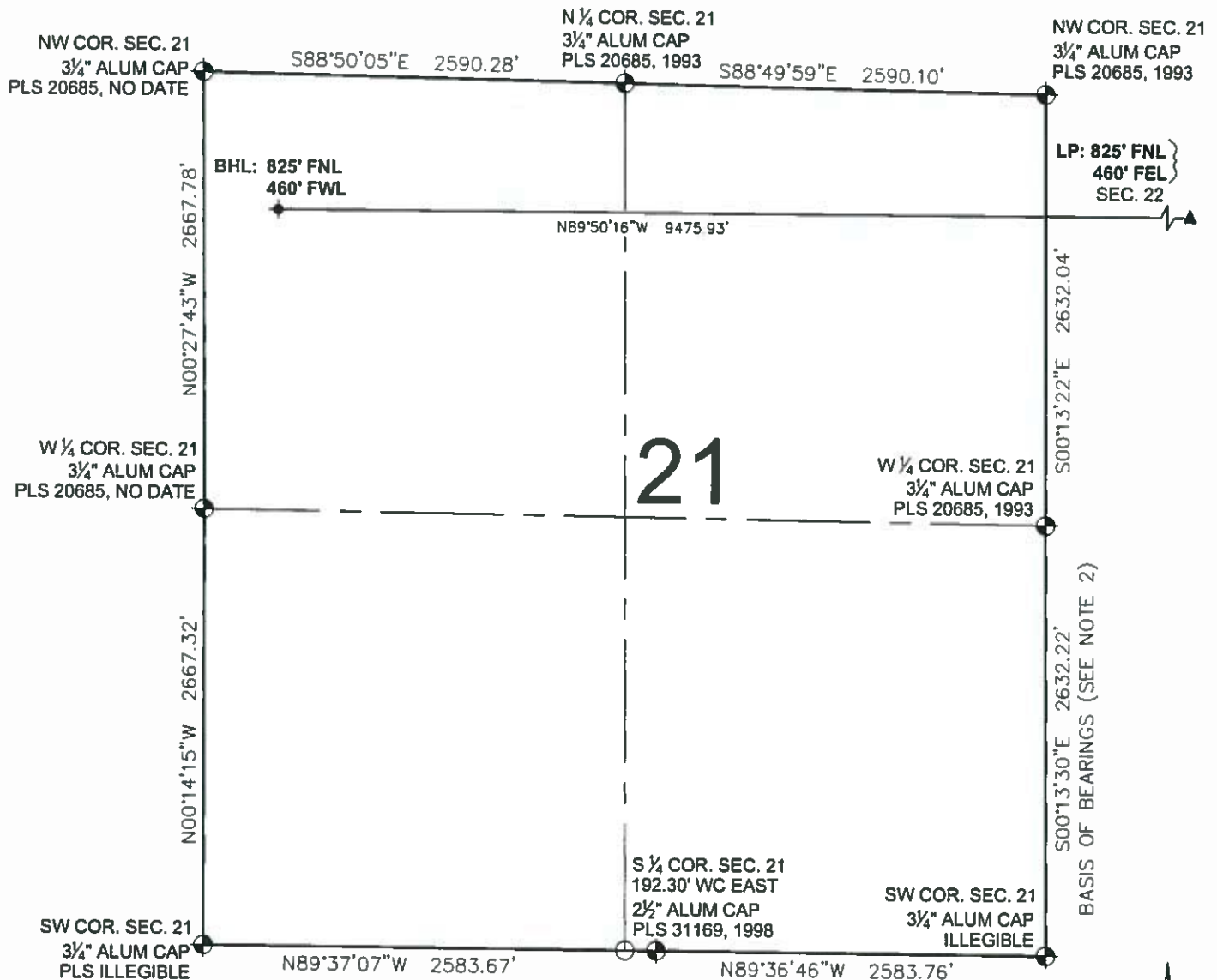
MICHAEL L. POOL, PLS 38304
COLORADO LICENSED PROFESSIONAL LAND SURVEYOR
FOR AND ON BEHALF OF P.F.S., LLC



SHEET 1 OF 2

PREPARED BY: PFS Petroleum Field Services, LLC 7535 HiLoop Circle Denver, CO 80221	FIELD DATE: 06-24-15 DRAWING DATE: 10-07-16 BY: CSG CHECKED BY: BMO	WELL NAME: RBF 4 SURFACE LOCATION: SE 1/4 NE 1/4 SEC. 22 T6N, R67W, 6TH P.M. WELD COUNTY, COLORADO	PREPARED FOR: EXTRACTION Oil & Gas
---	--	--	---

RBF 4 WELL LOCATION CERTIFICATE



LEGEND

- ⊕ = EXISTING MONUMENT ✦ = BOTTOM HOLE
- = CALCULATED POSITION ▲ = LANDING POINT
- = PROPOSED WELL LP = LANDING POINT
- ◆ = EXISTING WELL BHL = BOTTOM HOLE LOCATION

MICHAEL L. POOL, PLS 38304
COLORADO LICENSED PROFESSIONAL LAND SURVEYOR
FOR AND ON BEHALF OF P.F.S., LLC



SHEET 2 OF 2

PREPARED BY: 	FIELD DATE: 06-24-15	WELL NAME: RBF 4	PREPARED FOR: 	
	DRAWING DATE: 10-07-16	SURFACE LOCATION: SE 1/4 NE 1/4 SEC. 22 T6N, R67W, 6TH P.M. WELD COUNTY, COLORADO		
	BY: CSG	CHECKED BY: BMO		