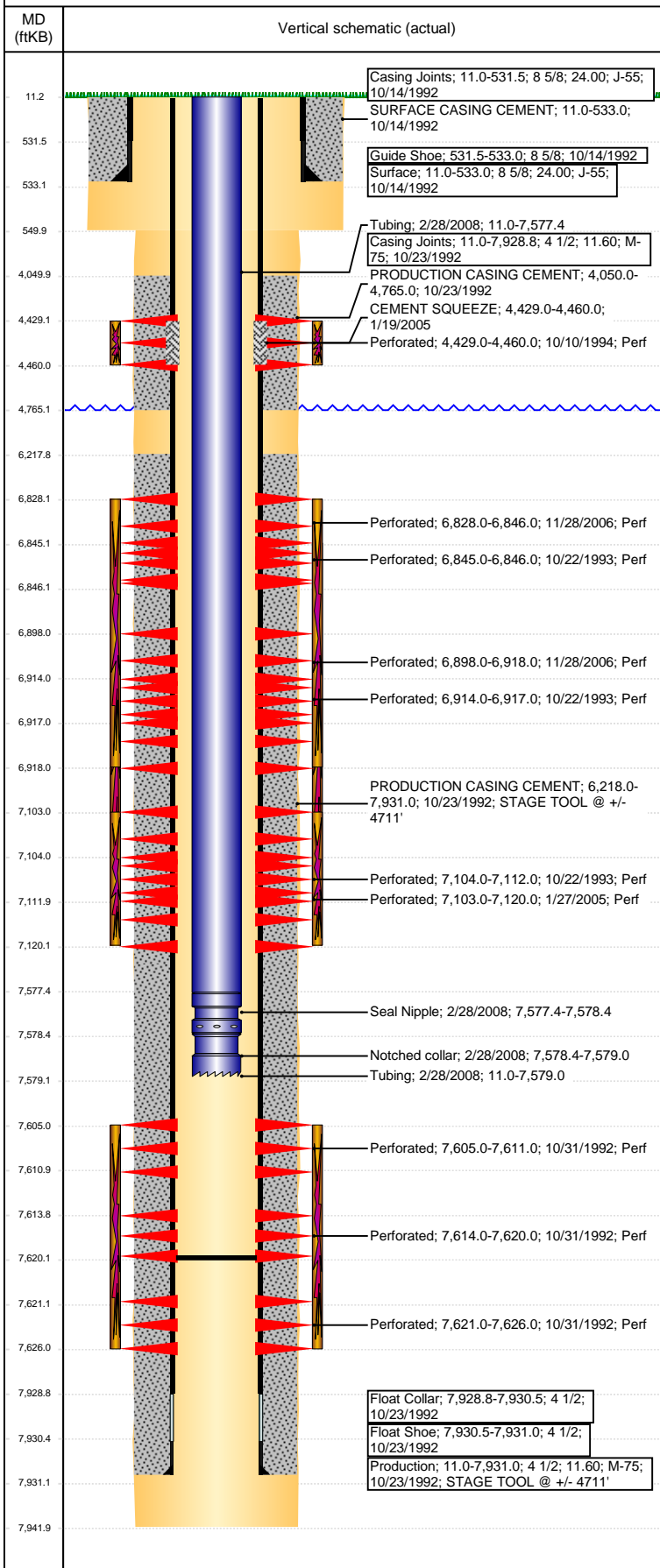


Well Name: MOSER 34-06G

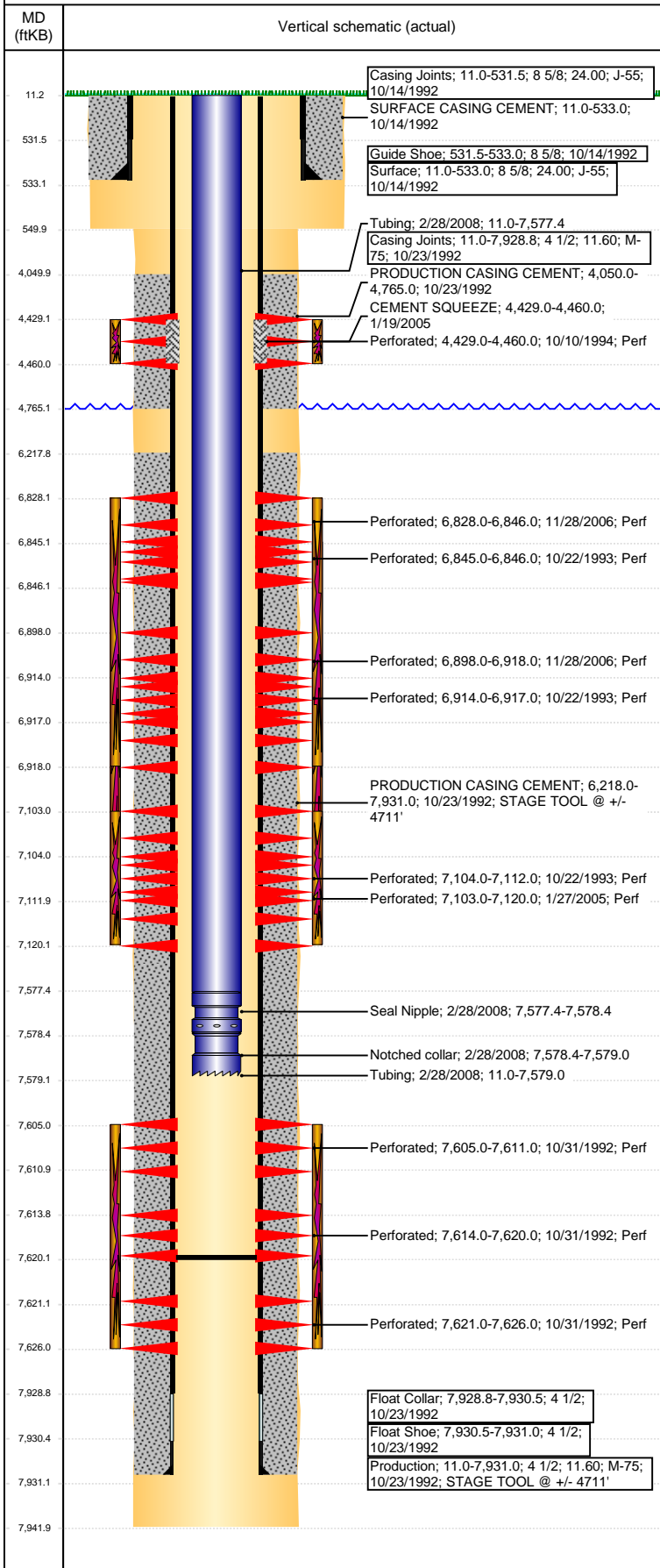
VERTICAL - ORIGINAL HOLE, 2/22/2017 9:04:27 AM



Well Header							
API	05-123-16262	Business Unit	DJ BASIN	District	15	Well Config	VERTICAL
Original KB Elevation (ft)	4,779	KB - GL / MSL (ftKB)	11.00	Spud Date	10/13/1992	P & A Date	
Comment							
DISCREPANCY: DRL RPT SURF CSG DEPTHS 533' & 537'. ST RPT SURF CSG @ 537', SCHEMATIC SURF CSG @ 533'. USED 533'							
Directions To Well							
Congressional Location							
Quarter 3	Quarter 4	Section	Township	TwNS Dir	Range	Range E/W Dir	
SE	NW	34	4	N	65	W	
Bottom Hole Location							
North-South Distance (ft)	From N or S Line	East-West Distance (ft)	From E or W Line				
Plug Back Total Depths							
Date	Depth (ftKB)	Method	Com				
10/31/1992	7,845.0	CASED HOLE LOG	DEPTH LOGGER ON CBL				
2/28/2008	7,620.0	TAG	CLEAN OUT TO LAND TUBING				
Wellbore Sections							
Section Des	Size (in)	Act Top, MD (ftKB)	Act Btm, MD (ftKB)				
SURFACE	12 1/4	11	550				
PRODUCTION	7 7/8	550	7,942				
Zone Statuses							
Zone Name	Status Date	Status	Fluid Type	Job	Prod Method		
NIOBRARA	11/8/1993	PR		RECOMPLETI...			
NIOBRARA	10/10/1994	SI		RECOMPLETI...			
NIOBRARA	11/15/1994	PR		RECOMPLETI...			
NIOBRARA	12/14/2006	PR		RE-FRAC, 11/2...			
NIOBRARA	3/3/2008	PR		COMMINGLE...			
CODELL	11/8/1993	PR		RECOMPLETI...			
CODELL	10/10/1994	SI		RECOMPLETI...			
CODELL	11/15/1994	PR		RECOMPLETI...			
CODELL	3/9/2005	PR		RE-FRAC, 1/17...			
CODELL	11/27/2006	SI		RE-FRAC, 11/2...			
CODELL	3/3/2008	PR		COMMINGLE...			
SUSSEX	11/15/1994	PR		RECOMPLETI...			
SUSSEX	1/19/2005	AB		RE-FRAC, 1/17...			
J SAND	11/17/1992	PR		DRILLING/CO...			
J SAND	10/22/1993	SI		RECOMPLETI...			
J SAND	11/8/1993	PR		RECOMPLETI...			
J SAND	10/10/1994	SI		RECOMPLETI...			
J SAND	11/15/1994	PR		RECOMPLETI...			
J SAND	1/21/2005	SI		RE-FRAC, 1/17...			
J SAND	3/3/2008	PR		COMMINGLE...			
Casing Strings							
Surface, 533.0ftKB							
Casing Description	Run Date	OD (in)	Wt/Len (l...)	Grade	Top, MD (ft...)	MD (ftKB)	
Surface	10/14/1992	8 5/8	24.00	J-55	11.0	533.0	
Production, 7,931.0ftKB							
Casing Description	Run Date	OD (in)	Wt/Len (l...)	Grade	Top, MD (ft...)	MD (ftKB)	
Production	10/23/1992	4 1/2	11.60	M-75	11.0	7,931.0	
Cement							
Description	SURFACE CASING CEMENT			Top Depth (ftKB)	Bottom Depth (ftKB)		
				11.0	533.0		
Description	PRODUCTION CASING CEMENT			Top Depth (ftKB)	Bottom Depth (ftKB)		
				4,050.0	4,765.0		
Description	PRODUCTION CASING CEMENT			Top Depth (ftKB)	Bottom Depth (ftKB)		
				6,218.0	7,931.0		
Description	CEMENT SQUEEZE			Top Depth (ftKB)	Bottom Depth (ftKB)		
				4,429.0	4,460.0		
Tubing Strings							
Tubing Description	Run Date	String...	ID (in)	Wt (lb/ft)	Grade	Len (ft)	Set De...
Tubing	2/28/2008	2 3/8	2.00	4.70	J-55	7,568.00	

Well Name: MOSER 34-06G

VERTICAL - ORIGINAL HOLE, 2/22/2017 9:04:29 AM



Tubing Components							
Item Des	OD (in)	Wt (lb/ft)	Grade	Jts	Len (ft)	Btm (ftKB)	Btm (TVD) (ftKB)
Tubing	2 3/8	4.70	J-55	244	7,566.40	7,577.4	
Seal Nipple	2 3/8			1	1.00	7,578.4	
Notched collar	2 3/8			1	0.60	7,579.0	

Other In Hole				
Run Date	Des	OD (in)	Top (ftKB)	Btm (ftKB)

Logs			
Date	Type	Top, MD (ftKB)	Btm, MD (ftKB)
10/22/1992	COMPENSATED DENSITY	3,650.0	7,897.0
10/22/1992	GAMMA RAY	4,350.0	7,616.0
10/22/1992	INDUCTION	532.0	7,941.0
10/31/1992	SONIC CEMENT BOND	3,800.0	7,840.0
11/5/2010	GYRO	0.0	7,550.0

Perforation Data					
Linked Zone	Bnch/St g	Sum of Entered Shot Total	Top (ftKB)	Btm (ftKB)	Date
SUSSEX, ORIGINAL HOLE		31	4,429.00	4,460.00	10/10/1994
NIOBRARA, ORIGINAL HOLE		108	6,828.00	6,846.00	11/28/2006
NIOBRARA, ORIGINAL HOLE	A	2	6,845.00	6,846.00	10/22/1993
NIOBRARA, ORIGINAL HOLE		120	6,898.00	6,918.00	11/28/2006
NIOBRARA, ORIGINAL HOLE	B	4	6,914.00	6,917.00	10/22/1993
CODELL, ORIGINAL HOLE		68	7,103.00	7,120.00	1/27/2005
CODELL, ORIGINAL HOLE		9	7,104.00	7,112.00	10/22/1993
J SAND, ORIGINAL HOLE		12	7,605.00	7,611.00	10/31/1992
J SAND, ORIGINAL HOLE		12	7,614.00	7,620.00	10/31/1992
J SAND, ORIGINAL HOLE		10	7,621.00	7,626.00	10/31/1992
Total (Sum)		376			

Stimulation Intervals		
Start Date	Primary Job Type	
11/11/1992	DRILLING/COMPLETION - ORIGINAL	
Technical Result	Tech Result Details	Tech Result Note
Comment TRIPLE ENTRY FRAC		
Start Date	Primary Job Type	
11/4/1993	RECOMPLETION	
Technical Result	Tech Result Details	Tech Result Note
Comment LIMITED ENTRY FRAC		
Start Date	Primary Job Type	
10/25/1994	RECOMPLETION	
Technical Result	Tech Result Details	Tech Result Note
Comment		
Start Date	Primary Job Type	
1/27/2005	RE-FRAC	
Technical Result	Tech Result Details	Tech Result Note
Comment		
Start Date	Primary Job Type	
12/13/2006	RE-FRAC	
Technical Result	Tech Result Details	Tech Result Note
Comment		