

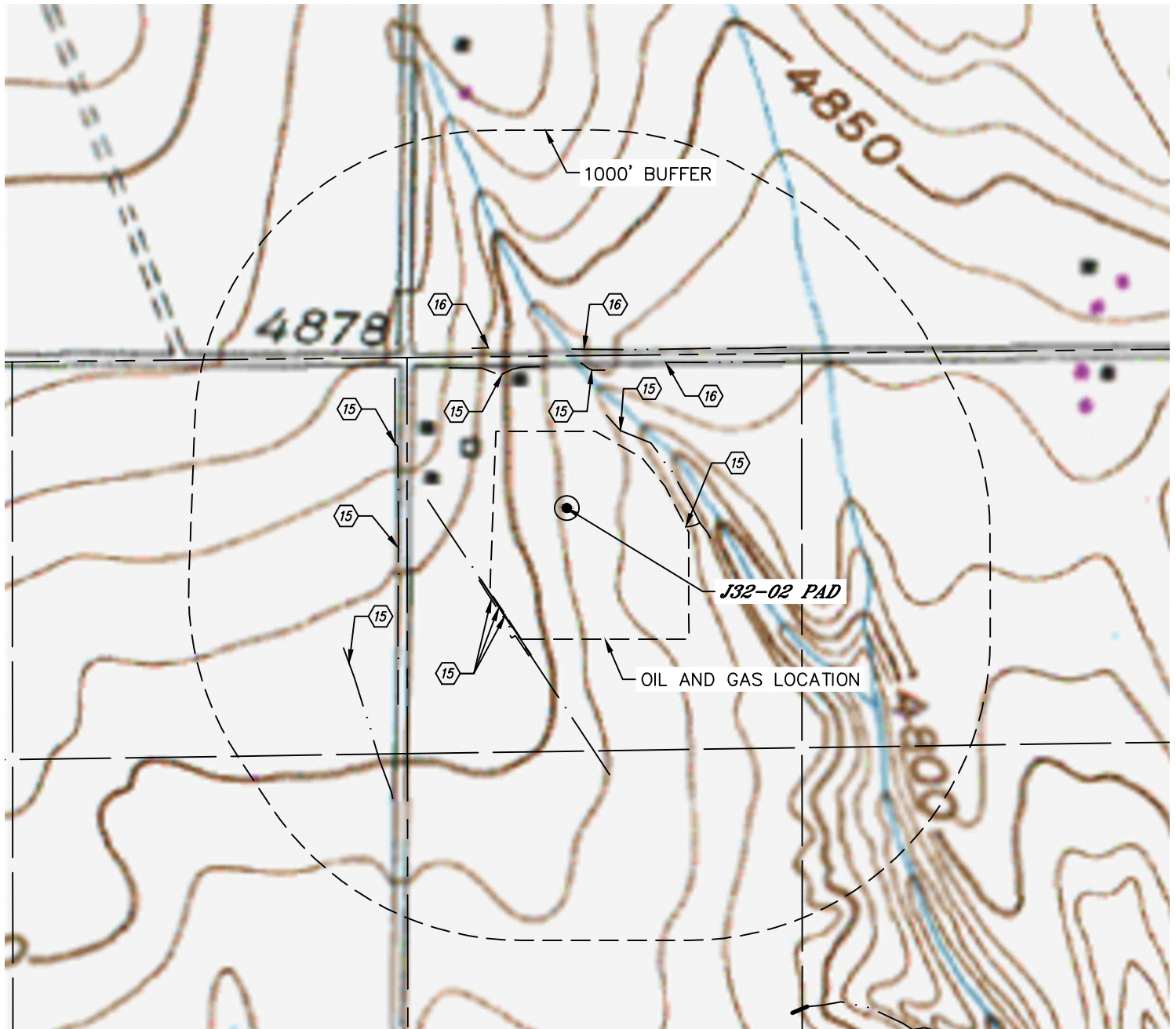


Lat40°, Inc. 6250 W. 10th Street, Unit 2, Greeley, CO 970-515-5294

HYDROLOGY MAP

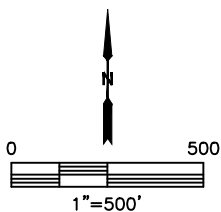
J32-02 PAD

SECTION: 32
TOWNSHIP: 5N
RANGE: 66W
6TH. P.M.
WELD COUNTY, CO



DISTANCES MEASURED FROM THE EDGE OF THE OIL AND GAS LOCATION.

- 15 DITCH 0' & 43' NE, 2', 5', 11' & 524' SW, 190' & 202' N, 310' & 333' W
- 16 BORROW DITCH 272' & 277' N, 315' NE



DATE: 1/16/2017
PROJECT#: 2016030