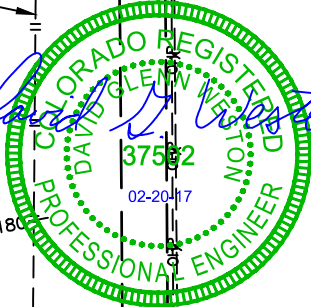
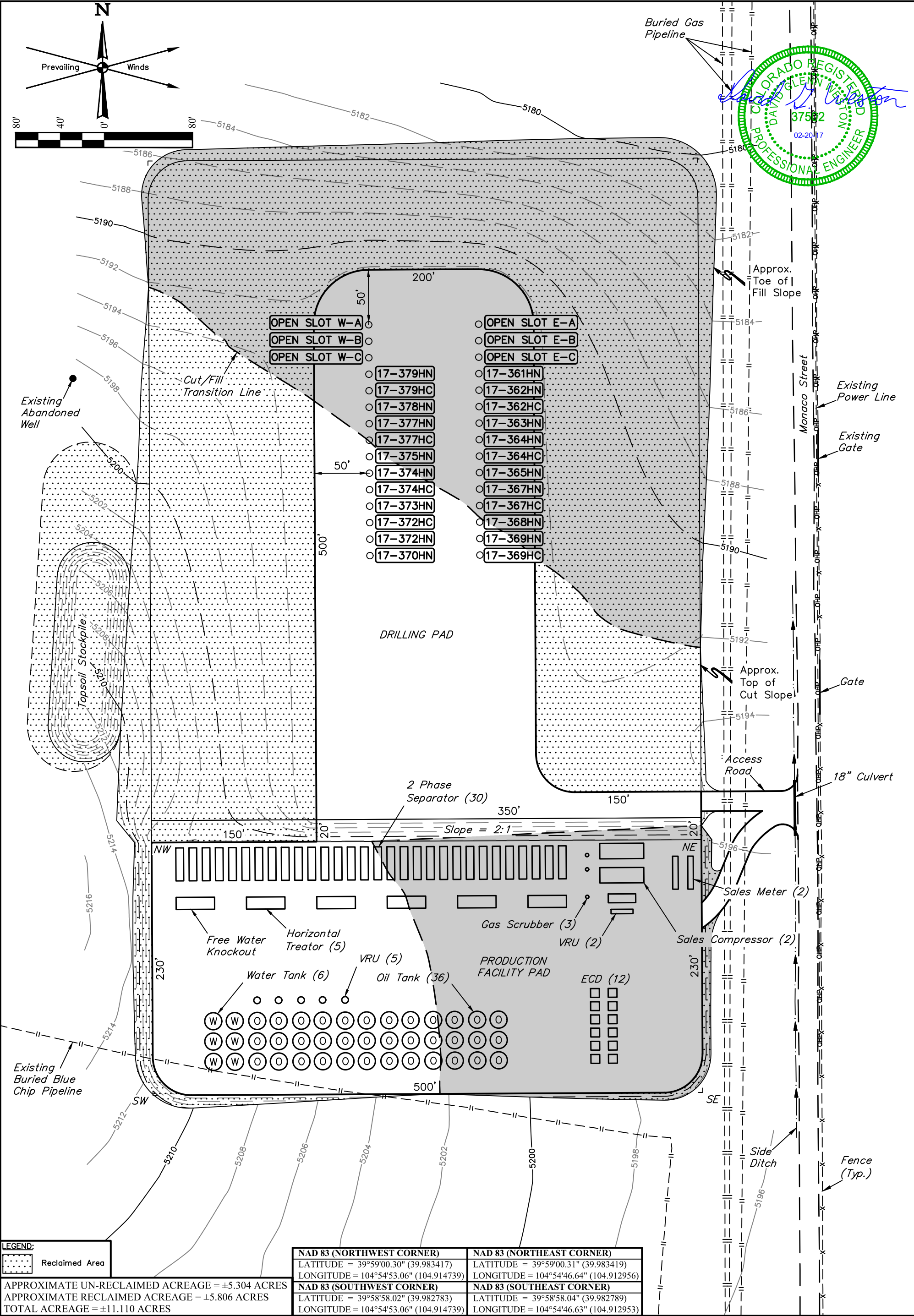


ADAMS COUNTY, COLORADO

DESCRIPTION:



UINTAH
ENGINEERING & LAND SURVEYING



GREAT WESTERN OPERATING COMPANY

OCHO LD PAD
NE 1/4 NW 1/4, SECTION 8, T1S, R67W, 6th P.M.
ADAMS COUNTY, COLORADO

SURVEYED BY	Z.B., G.W.	05-24-16	SCALE
DRAWN BY	D.COX	02-20-17	1" = 80'
PRODUCTION FACILITY LAYOUT			FIGURE #3



UELS, LLC
Corporate Office * 85 South 200 East
Vernal, UT 84078 * (435) 789-1017