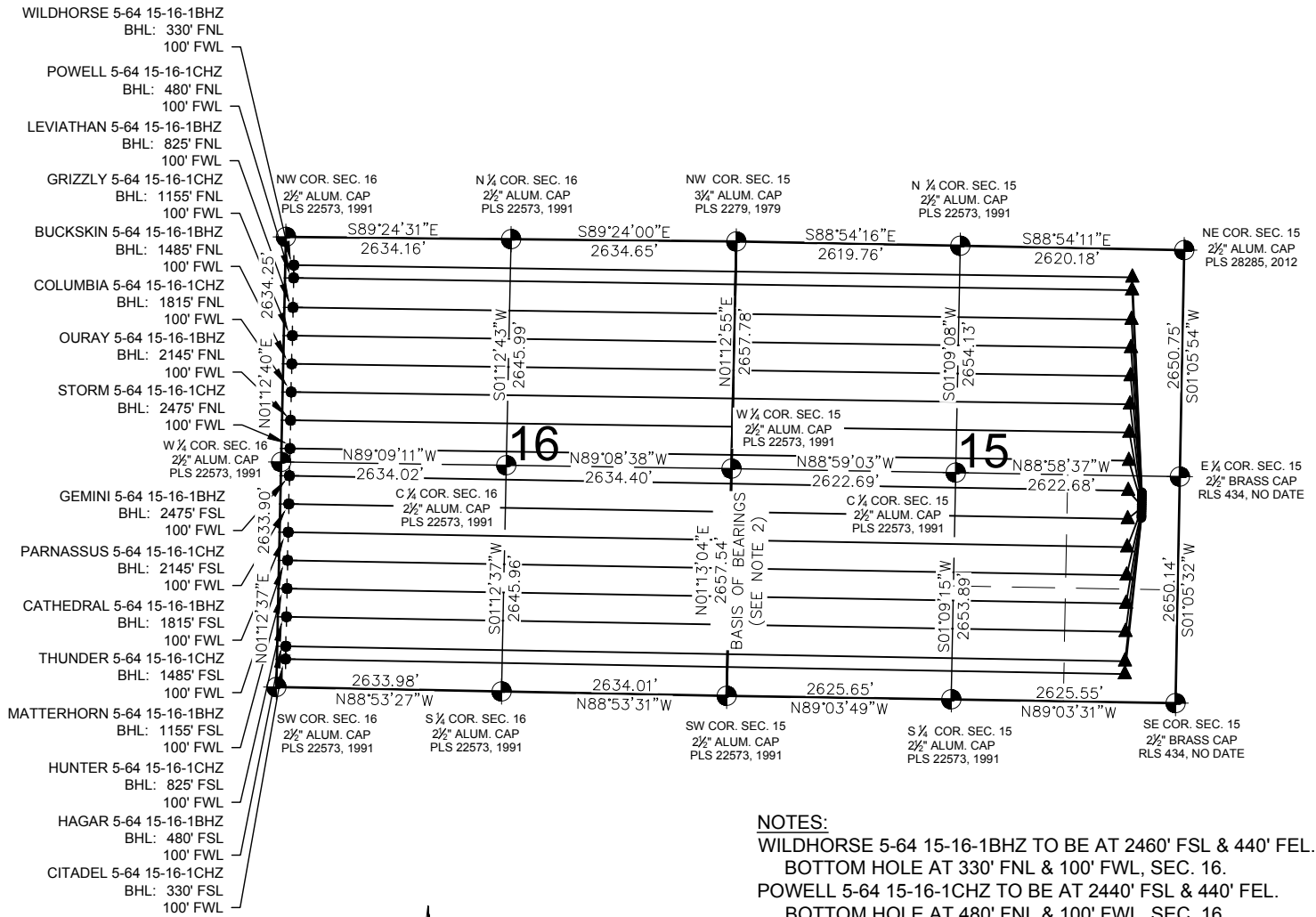


# HIGHLANDS 5-64 15-16 PAD MULTI-WELL PLAN



## NOTES:

- WILDHORSE 5-64 15-16-1BHZ TO BE AT 2460' FSL & 440' FEL.
- BOTTOM HOLE AT 330' FNL & 100' FWL, SEC. 16.
- POWELL 5-64 15-16-1CHZ TO BE AT 2440' FSL & 440' FEL.
- BOTTOM HOLE AT 480' FNL & 100' FWL, SEC. 16.
- LEVIATHAN 5-64 15-16-1BHZ TO BE AT 2420' FSL & 440' FEL.
- BOTTOM HOLE AT 825' FNL & 100' FWL, SEC. 16.
- GRIZZLY 5-64 15-16-1CHZ TO BE AT 2400' FSL & 440' FEL.
- BOTTOM HOLE AT 1155' FNL & 100' FWL, SEC. 16.
- BUCKSKIN 5-64 15-16-1BHZ TO BE AT 2380' FSL & 440' FEL.
- BOTTOM HOLE AT 1485' FNL & 100' FWL, SEC. 16.
- COLUMBIA 5-64 15-16-1CHZ TO BE AT 2360' FSL & 440' FEL.
- BOTTOM HOLE AT 1815' FNL & 100' FWL, SEC. 16.
- OURAY 5-64 15-16-1BHZ TO BE AT 2340' FSL & 440' FEL.
- BOTTOM HOLE AT 2145' FNL & 100' FWL, SEC. 16.
- STORM 5-64 15-16-1CHZ TO BE AT 2320' FSL & 440' FEL.
- BOTTOM HOLE AT 2475' FNL & 100' FWL, SEC. 16.
- GEMINI 5-64 15-16-1BHZ TO BE AT 2300' FSL & 440' FEL.
- BOTTOM HOLE AT 2475' FSL & 100' FWL, SEC. 16.
- PARNASSUS 5-64 15-16-1CHZ TO BE AT 2280' FSL & 440' FEL.
- BOTTOM HOLE AT 2145' FSL & 100' FWL, SEC. 16.
- CATHEDRAL 5-64 15-16-1BHZ TO BE AT 2260' FSL & 440' FEL.
- BOTTOM HOLE AT 1815' FSL & 100' FWL, SEC. 16.
- THUNDER 5-64 15-16-1CHZ TO BE AT 2240' FSL & 440' FEL.
- BOTTOM HOLE AT 1485' FSL & 100' FWL, SEC. 16.
- MATTERHORN 5-64 15-16-1BHZ TO BE AT 2220' FSL & 440' FEL.
- BOTTOM HOLE AT 1155' FSL & 100' FWL, SEC. 16.
- HUNTER 5-64 15-16-1CHZ TO BE AT 2200' FSL & 440' FEL.
- BOTTOM HOLE AT 825' FSL & 100' FWL, SEC. 16.
- HAGAR 5-64 15-16-1BHZ TO BE AT 2180' FSL & 440' FEL.
- BOTTOM HOLE AT 480' FSL & 100' FWL, SEC. 16.
- CITADEL 5-64 15-16-1CHZ TO BE AT 2160' FSL & 440' FEL.
- BOTTOM HOLE AT 330' FSL & 100' FWL, SEC. 16.

## LEGEND

- = EXISTING MONUMENT
- = PROPOSED WELL
- ◆ = BOTTOM HOLE
- ▲ = LANDING POINT
- LP = LANDING POINT
- BHL = BOTTOM HOLE LOCATION

## NOTES:

- THIS FIELD SURVEY CONFORMS TO THE MINIMUM STANDARDS SET BY THE C.O.G.C.C., RULE NO. 215
- BEARINGS ARE BASED ON THE ASSUMPTION THAT THE WEST LINE OF THE SOUTHWEST QUARTER OF SECTION 15, BEARS N01°13'04"E BETWEEN THE MONUMENTS SHOWN HEREON.
- ALL DISTANCES AND BEARINGS SHOWN HEREON ARE GROUND VALUES AS GPS MEASURED IN THE FIELD, WITH TIES TO WELLS MEASURED PERPENDICULAR TO SECTION LINES. THIS LOW DISTORTION PROJECTION (LDP) IS BASED ON THE NORTH AMERICAN DATUM OF 1983, U.S. SURVEY FOOT WITH A LATITUDE ORIGIN OF 39.608492°, A CENTRAL MERIDIAN LONGITUDE OF -104.548224°, AND A SCALE FACTOR ON THE CENTRAL MERIDIAN OF 1.000281 (EXACT). THE LDP BASIS OF BEARINGS IS GEODETIC NORTH.
- FIELD VERIFICATION OF MONUMENTS COMPLETED WITHIN 1 YEAR OF SIGNATURE DATE.

FIELD DATE:  
11-17-16

DRAWING DATE:  
02-20-17

BY:  
IJM

CHECKED BY:  
KAD

SITE NAME:  
HIGHLANDS 5-64 15-16 PAD

SURFACE LOCATION:  
NE 1/4 SE 1/4 SEC. 15, T5S, R64W, 6TH P.M.  
ARAPAHOE COUNTY, COLORADO

PREPARED FOR: