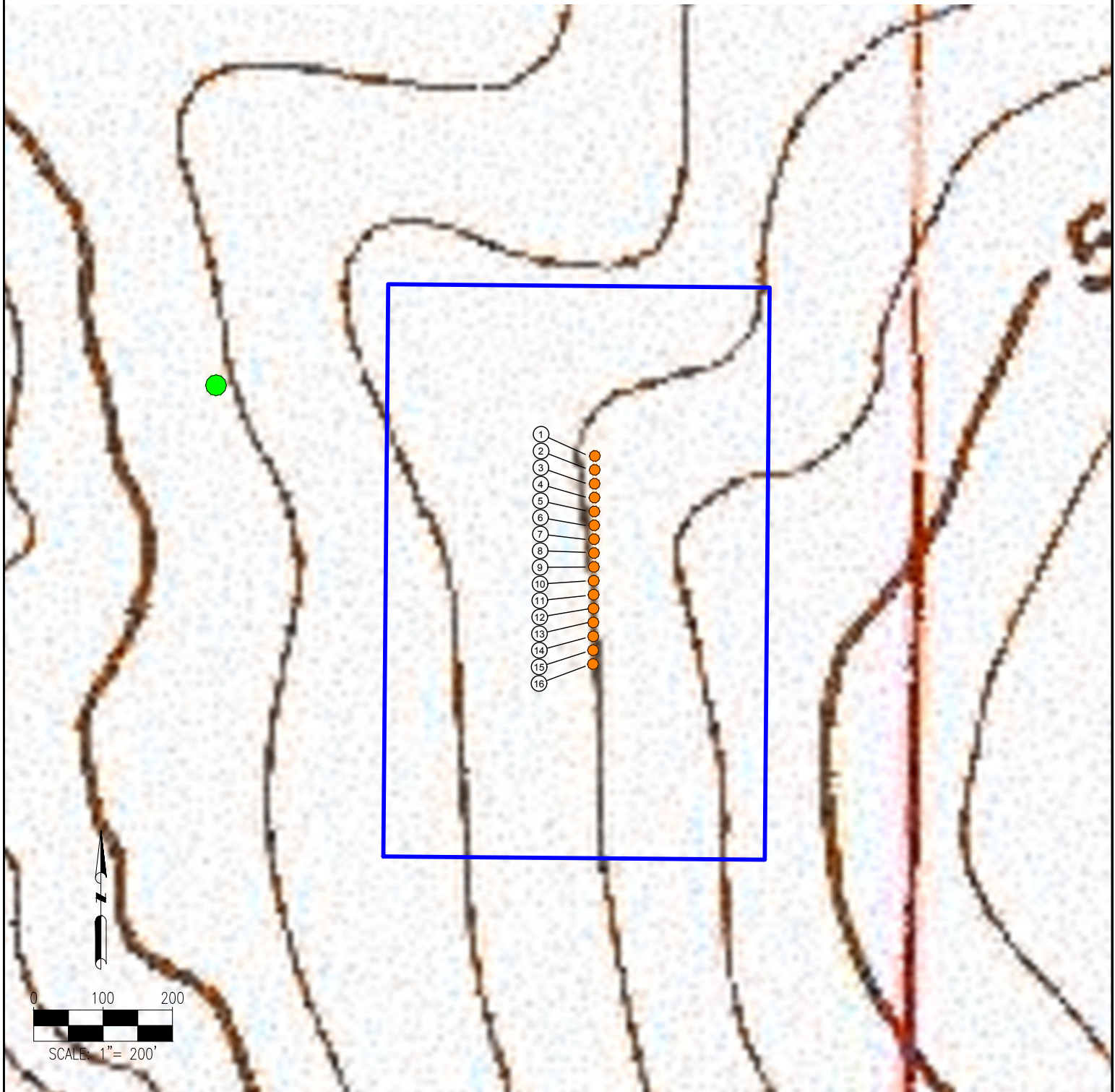


HIGHLANDS 5-64 15-16 PAD REFERENCE AREA MAP



1. WILDHORSE 5-64 15-16-1BHZ
2. POWELL 5-64 15-16-1CHZ
3. LEVIATHAN 5-64 15-16-1BHZ
4. GRIZZLY 5-64 15-16-1CHZ
5. BUCKSKIN 5-64 15-16-1BHZ
6. COLUMBIA 5-64 15-16-1CHZ

7. OURAY 5-64 15-16-1BHZ
8. STORM 5-64 15-16-1CHZ
9. GEMINI 5-64 15-16-1BHZ
10. PARNASSUS 5-64 15-16-1CHZ
11. CATHEDRAL 5-64 15-16-1BHZ
12. THUNDER 5-64 15-16-1CHZ

13. MATTERHORN 5-64 15-16-1BHZ
14. HUNTER 5-64 15-16-1CHZ
15. HAGAR 5-64 15-16-1BHZ
16. CITADEL 5-64 15-16-1CHZ

REFERENCE LOCATION

REFERENCE PHOTO POINT

LAT: 39.615320°
LONG: -104.532922°
ELEVATION: 5909'

DISCLAIMER:
THIS PLOT DOES NOT REPRESENT A MONUMENTED LAND SURVEY AND SHOULD NOT BE
RELIED UPON TO DETERMINE BOUNDARY LINES, PROPERTY OWNERSHIP OR OTHER
PROPERTY INTERESTS. PARCEL LINES, IF DEPICTED HAVE NOT BEEN FIELD VERIFIED AND
MAY BE BASED UPON PUBLICLY AVAILABLE DATA THAT ALSO HAS NOT BEEN
INDEPENDENTLY VERIFIED.

DATA SOURCE:
TOPO MAP: USGS

PUBLICLY AVAILABLE DATA SOURCES HAVE NOT BEEN
INDEPENDENTLY VERIFIED BY PFS.

LEGEND:

- = PROPOSED WELL
- = REFERENCE PHOTO POINT
- = DISTURBANCE AREA



7535 Hilltop Circle
Denver, CO 80221
(303) 928-7128
www.ascentgeomatics.com

FIELD DATE:
11-17-16

DRAWING DATE:
12-06-16

BY:
IJM

CHECKED BY:
KAD

SITE NAME:
HIGHLANDS 5-64 15-16 PAD

SURFACE LOCATION:
NE 1/4 SE 1/4 SEC. 15, T5S, R64W, 6TH P.M.
ARAPAHOE COUNTY, COLORADO

PREPARED FOR:

