



Project: Mesa County, CO
 Site: Gunderson 20-03 Pad
 Well: Gunderson BCU 20-07E
 Wellbore: Wellbore #1
 Design: Design #3
 Latitude: 39.266783
 Longitude: -107.795281
 Ground Level: 7146.0
 well @ 7176.0usft (H&P #522)



PROJECT DETAILS: Mesa County, CO

Geodetic System: US State Plane 1983
 Datum: North American Datum 1983
 Ellipsoid: GRS 1980
 Zone: Colorado Central Zone
 System Datum: Mean Sea Level

REFERENCE INFORMATION

Co-ordinate (N/E) Reference: Well Gunderson BCU 20-07E, True North
 Vertical (TVD) Reference: well @ 7176.0usft (H&P #522)
 Section (VS) Reference: Slot - (0.0N, 8.8E)
 Measured Depth Reference: well @ 7176.0usft (H&P #522)
 Calculation Method: Minimum Curvature

WELL DETAILS: Gunderson BCU 20-07E

+N/-S	+E/-W	Northing	Ground Level: 7146.0 Easting	Latitude	Longitude
0.0	0.0	1530268.31	2350230.40	39.266783	-107.795281

WELLBORE TARGET DETAILS (MAP CO-ORDINATES AND LAT/LONG)

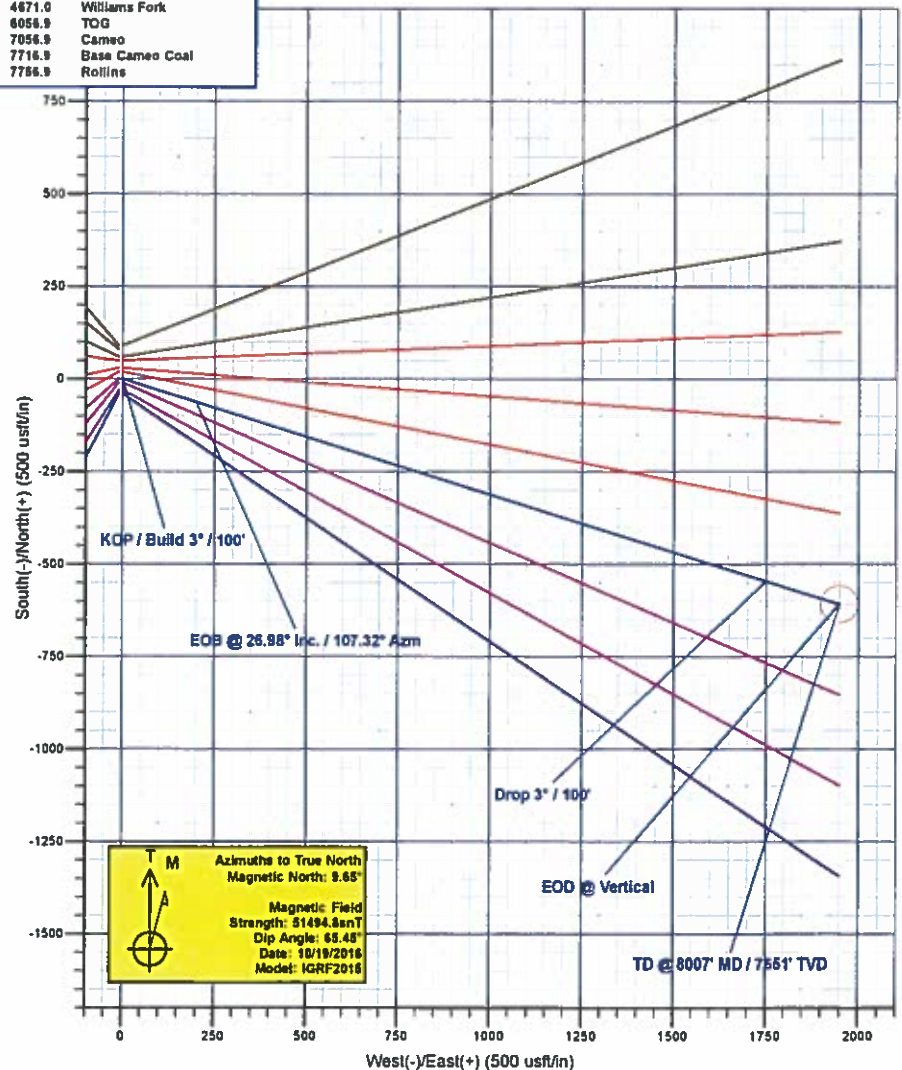
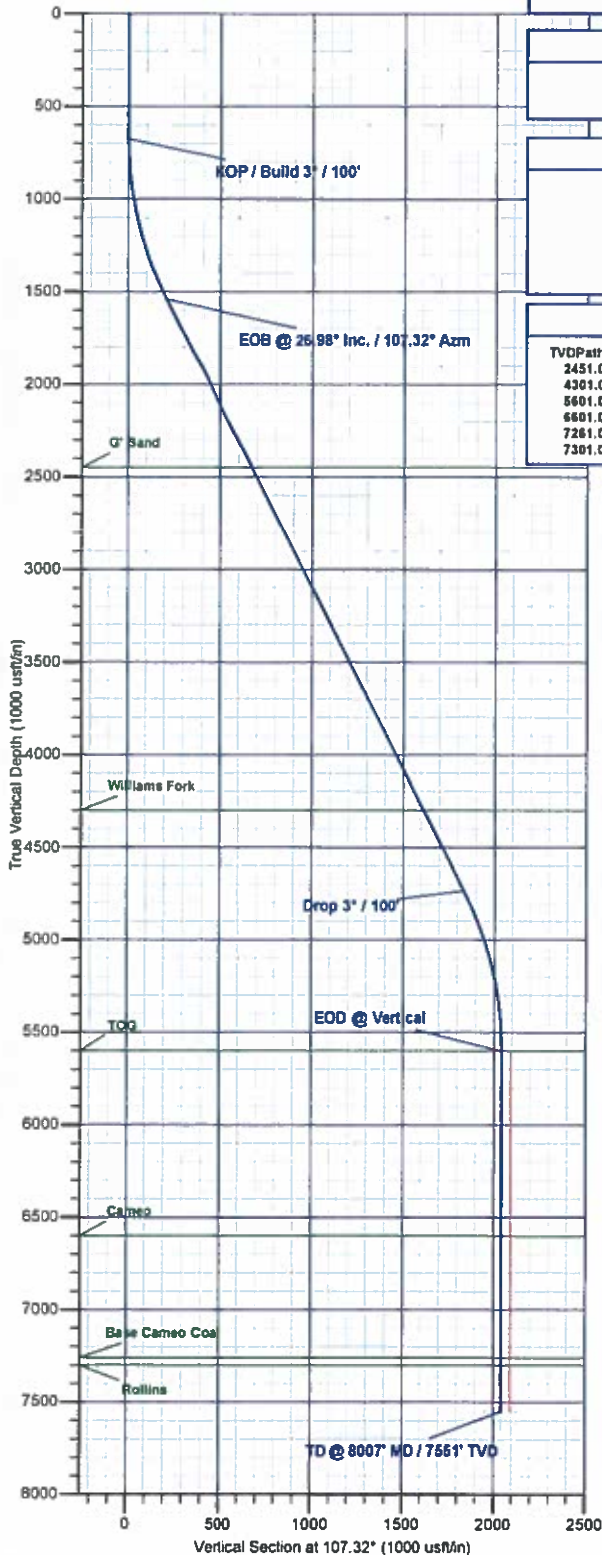
Name	TVD	+N/-S	+E/-W	Northing	Easting	Latitude	Longitude
PBHL - Gunderson BCU 20-07E	7551.0	-607.8	1949.0	1529811.47	2352163.46	39.265114	-107.788397

SECTION DETAILS

MD	Inc	Azi	TVD	+N/-S	+E/-W	Diag	TFace	VSect	Annotation
0.0	0.00	0.00	0.0	0.0	0.0	0.00	0.00	0.0	
675.0	0.00	0.00	675.0	0.0	0.0	0.00	0.00	0.0	KOP / Build 3° / 100'
1574.5	26.98	107.32	1541.5	-61.9	198.5	3.00	107.32	207.9	EOB @ 26.98° Inc. / 107.32° Azm
5157.4	26.98	107.32	4734.4	-545.9	1750.5	0.00	0.00	1833.7	Drop 3° / 100'
6056.9	0.00	0.00	5601.0	-607.8	1949.0	3.00	180.00	2041.5	EOD @ Vertical
8006.9	0.00	0.00	7551.0	-607.8	1949.0	0.00	0.00	2041.5	TD @ 8007' MD / 7551' TVD

FORMATION TOP DETAILS

TVDPath	MDPath	Formation
2451.0	2595.0	G' Sand
4301.0	4671.0	Williams Fork
5601.0	6056.9	TOG
6601.0	7056.9	Cameo
7261.0	7716.9	Base Cameo Coal
7301.0	7756.9	Rollins



Plan: Design #3 (Gunderson BCU 20-07E/Wellbore #1)

Created By: Will Jircik Date: 11:20, February 14 2017



Laramie Energy, LLC

Mesa County, CO

Gunderson 20-03 Pad

Gunderson BCU 20-07E

Wellbore #1

Plan: Design #3

QES Well Planning Report

14 February, 2017





Well Planning Report



Database:	EDM5002	Local Co-ordinate Reference:	Well Gunderson BCU 20-07E
Company:	Laramie Energy, LLC	TVD Reference:	well @ 7176 0usft (H&P #522)
Project:	Mesa County, CO	MD Reference:	well @ 7176 0usft (H&P #522)
Site:	Gunderson 20-03 Pad	North Reference:	True
Well:	Gunderson BCU 20-07E	Survey Calculation Method:	Minimum Curvature
Wellbore:	Wellbore #1		
Design:	Design #3		

Project	Mesa County, CO		
Map System:	US State Plane 1983	System Datum:	Mean Sea Level
Geo Datum:	North American Datum 1983		
Map Zone:	Colorado Central Zone		

Site	Gunderson 20-03 Pad			
Site Position:		Northing:	1,530,258.75 usft	Latitude: 39.266756
From:	Lat/Long	Easting:	2,350,219.97 usft	Longitude: -107.795317
Position Uncertainty:	0.0 usft	Slot Radius:	13-3/16"	Grid Convergence: -1.45°

Well	Gunderson BCU 20-07E			
Well Position	+N/-S	9.8 usft	Northing:	1,530,268.31 usft
	+E/-W	10.2 usft	Easting:	2,350,230.40 usft
Position Uncertainty	0.0 usft	Wellhead Elevation:	0.0 usft	Ground Level: 7,146.0 usft

Wellbore	Wellbore #1				
Magnetics	Model Name	Sample Date	Declination (°)	Dip Angle (°)	Field Strength (nT)
	IGRF2015	10/19/2016	9.65	65.45	51,495

Design	Design #3			
Audit Notes:				
Version:	Phase:	PLAN	Tie On Depth:	0.0
Vertical Section:	Depth From (TVD) (usft)	+N/-S (usft)	+E/-W (usft)	Direction (°)
	0.0	0.0	0.0	107.32

Plan Sections										
Measured Depth (usft)	Inclination (°)	Azimuth (°)	Vertical Depth (usft)	+N/-S (usft)	+E/-W (usft)	Dogleg Rate (°/100usft)	Build Rate (°/100usft)	Turn Rate (°/100usft)	TFO (°)	Target
0.0	0.00	0.00	0.0	0.0	0.0	0.00	0.00	0.00	0.00	
675.0	0.00	0.00	675.0	0.0	0.0	0.00	0.00	0.00	0.00	
1,574.5	26.98	107.32	1,541.6	-61.9	198.5	3.00	3.00	0.00	107.32	
5,157.4	26.98	107.32	4,734.4	-545.9	1,750.5	0.00	0.00	0.00	0.00	
6,056.9	0.00	0.00	5,601.0	-607.8	1,949.0	3.00	-3.00	0.00	180.00	
8,006.9	0.00	0.00	7,551.0	-607.8	1,949.0	0.00	0.00	0.00	0.00	PBHL - Gunderson Bl



Well Planning Report



Database:	EDM5002	Local Co-ordinate Reference:	Well Gunderson BCU 20-07E
Company:	Laramie Energy, LLC	TVD Reference:	well @ 7176.0usft (H&P #522)
Project:	Mesa County, CO	MD Reference:	well @ 7176.0usft (H&P #522)
Site:	Gunderson 20-03 Pad	North Reference:	True
Well:	Gunderson BCU 20-07E	Survey Calculation Method:	Minimum Curvature
Wellbore:	Wellbore #1		
Design:	Design #3		

Planned Survey

Measured Depth (usft)	Inclination (°)	Azimuth (°)	Vertical Depth (usft)	+N/-S (usft)	+E/-W (usft)	Vertical Section (usft)	Dogleg Rate (°/100usft)	Build Rate (°/100usft)	Turn Rate (°/100usft)
0.0	0.00	0.00	0.0	0.0	0.0	0.0	0.00	0.00	0.00
100.0	0.00	0.00	100.0	0.0	0.0	0.0	0.00	0.00	0.00
200.0	0.00	0.00	200.0	0.0	0.0	0.0	0.00	0.00	0.00
300.0	0.00	0.00	300.0	0.0	0.0	0.0	0.00	0.00	0.00
400.0	0.00	0.00	400.0	0.0	0.0	0.0	0.00	0.00	0.00
500.0	0.00	0.00	500.0	0.0	0.0	0.0	0.00	0.00	0.00
600.0	0.00	0.00	600.0	0.0	0.0	0.0	0.00	0.00	0.00
KOP / Build 3° / 100'									
675.0	0.00	0.00	675.0	0.0	0.0	0.0	0.00	0.00	0.00
700.0	0.75	107.32	700.0	0.0	0.2	0.2	3.00	3.00	0.00
800.0	3.75	107.32	799.9	-1.2	3.9	4.1	3.00	3.00	0.00
900.0	6.75	107.32	899.5	-3.9	12.6	13.2	3.00	3.00	0.00
1,000.0	9.75	107.32	998.4	-8.2	26.3	27.6	3.00	3.00	0.00
1,100.0	12.75	107.32	1,096.5	-14.0	45.0	47.1	3.00	3.00	0.00
1,200.0	15.75	107.32	1,193.4	-21.3	68.5	71.7	3.00	3.00	0.00
1,300.0	18.75	107.32	1,288.9	-30.2	96.8	101.4	3.00	3.00	0.00
1,400.0	21.75	107.32	1,382.7	-40.5	129.8	136.0	3.00	3.00	0.00
1,500.0	24.75	107.32	1,474.6	-52.2	167.5	175.4	3.00	3.00	0.00
8 5/8"									
1,530.0	25.65	107.32	1,501.7	-56.0	179.7	188.2	3.00	3.00	0.00
EOB @ 26.98° Inc. / 107.32° Azm									
1,574.5	26.98	107.32	1,541.6	-61.9	198.5	207.9	3.00	3.00	0.00
1,600.0	26.98	107.32	1,564.3	-65.3	209.6	219.5	0.00	0.00	0.00
1,700.0	26.98	107.32	1,653.4	-78.9	252.9	264.9	0.00	0.00	0.00
1,800.0	26.98	107.32	1,742.6	-92.4	296.2	310.3	0.00	0.00	0.00
1,900.0	26.98	107.32	1,831.7	-105.9	339.5	355.6	0.00	0.00	0.00
2,000.0	26.98	107.32	1,920.8	-119.4	382.8	401.0	0.00	0.00	0.00
2,100.0	26.98	107.32	2,009.9	-132.9	426.1	446.4	0.00	0.00	0.00
2,200.0	26.98	107.32	2,099.0	-146.4	469.5	491.8	0.00	0.00	0.00
2,300.0	26.98	107.32	2,188.1	-159.9	512.8	537.1	0.00	0.00	0.00
2,400.0	26.98	107.32	2,277.2	-173.4	556.1	582.5	0.00	0.00	0.00
2,500.0	26.98	107.32	2,366.3	-186.9	599.4	627.9	0.00	0.00	0.00
G' Sand									
2,595.0	26.98	107.32	2,451.0	-199.8	640.6	671.0	0.00	0.00	0.00
2,600.0	26.98	107.32	2,455.5	-200.4	642.7	673.3	0.00	0.00	0.00
2,700.0	26.98	107.32	2,544.6	-213.9	686.1	718.6	0.00	0.00	0.00
2,800.0	26.98	107.32	2,633.7	-227.5	729.4	764.0	0.00	0.00	0.00
2,900.0	26.98	107.32	2,722.8	-241.0	772.7	809.4	0.00	0.00	0.00
3,000.0	26.98	107.32	2,811.9	-254.5	816.0	854.8	0.00	0.00	0.00
3,100.0	26.98	107.32	2,901.0	-268.0	859.3	900.1	0.00	0.00	0.00
3,200.0	26.98	107.32	2,990.1	-281.5	902.6	945.5	0.00	0.00	0.00
3,300.0	26.98	107.32	3,079.3	-295.0	946.0	990.9	0.00	0.00	0.00
3,400.0	26.98	107.32	3,168.4	-308.5	989.3	1,036.3	0.00	0.00	0.00
3,500.0	26.98	107.32	3,257.5	-322.0	1,032.6	1,081.6	0.00	0.00	0.00
3,600.0	26.98	107.32	3,346.6	-335.5	1,075.9	1,127.0	0.00	0.00	0.00
3,700.0	26.98	107.32	3,435.7	-349.0	1,119.2	1,172.4	0.00	0.00	0.00
3,800.0	26.98	107.32	3,524.8	-362.5	1,162.6	1,217.8	0.00	0.00	0.00
3,900.0	26.98	107.32	3,613.9	-376.0	1,205.9	1,263.1	0.00	0.00	0.00
4,000.0	26.98	107.32	3,703.0	-389.6	1,249.2	1,308.5	0.00	0.00	0.00
4,100.0	26.98	107.32	3,792.2	-403.1	1,292.5	1,353.9	0.00	0.00	0.00
4,200.0	26.98	107.32	3,881.3	-416.6	1,335.8	1,399.3	0.00	0.00	0.00
4,300.0	26.98	107.32	3,970.4	-430.1	1,379.1	1,444.6	0.00	0.00	0.00
4,400.0	26.98	107.32	4,059.5	-443.6	1,422.5	1,490.0	0.00	0.00	0.00
4,500.0	26.98	107.32	4,148.6	-457.1	1,465.8	1,535.4	0.00	0.00	0.00



Well Planning Report



Database:	EDM5002	Local Co-ordinate Reference:	Well Gunderson BCU 20-07E
Company:	Laramie Energy, LLC	TVD Reference:	well @ 7176.0usft (H&P #522)
Project:	Mesa County, CO	MD Reference:	well @ 7178.0usft (H&P #522)
Site:	Gunderson 20-03 Pad	North Reference:	True
Well:	Gunderson BCU 20-07E	Survey Calculation Method:	Minimum Curvature
Wellbore:	Wellbore #1		
Design:	Design #3		

Planned Survey

Measured Depth (usft)	Inclination (°)	Azimuth (°)	Vertical Depth (usft)	+N/-S (usft)	+E/-W (usft)	Vertical Section (usft)	Dogleg Rate (°/100usft)	Build Rate (°/100usft)	Turn Rate (°/100usft)
4,600.0	26.98	107.32	4,237.7	-470.6	1,509.1	1,580.8	0.00	0.00	0.00
Williams Fork									
4,671.0	26.98	107.32	4,301.0	-480.2	1,539.9	1,613.0	0.00	0.00	0.00
4,700.0	26.98	107.32	4,326.8	-484.1	1,552.4	1,626.1	0.00	0.00	0.00
4,800.0	26.98	107.32	4,415.9	-497.6	1,595.7	1,671.5	0.00	0.00	0.00
4,900.0	26.98	107.32	4,505.1	-511.1	1,639.1	1,716.9	0.00	0.00	0.00
5,000.0	26.98	107.32	4,594.2	-524.6	1,682.4	1,762.3	0.00	0.00	0.00
5,100.0	26.98	107.32	4,683.3	-538.1	1,725.7	1,807.7	0.00	0.00	0.00
Drop 3° / 100'									
5,157.4	26.98	107.32	4,734.4	-545.9	1,750.6	1,833.7	0.00	0.00	0.00
5,200.0	25.71	107.32	4,772.6	-551.5	1,768.6	1,852.6	3.00	-3.00	0.00
5,300.0	22.71	107.32	4,863.8	-563.7	1,807.7	1,893.6	3.00	-3.00	0.00
5,400.0	19.71	107.32	4,957.0	-574.5	1,842.3	1,929.8	3.00	-3.00	0.00
5,500.0	16.71	107.32	5,052.0	-583.8	1,872.1	1,961.0	3.00	-3.00	0.00
5,600.0	13.71	107.32	5,148.5	-591.6	1,897.1	1,987.2	3.00	-3.00	0.00
5,700.0	10.71	107.32	5,246.2	-597.9	1,917.3	2,008.4	3.00	-3.00	0.00
5,800.0	7.71	107.32	5,344.9	-602.7	1,932.6	2,024.4	3.00	-3.00	0.00
5,900.0	4.71	107.32	5,444.3	-605.9	1,942.9	2,035.2	3.00	-3.00	0.00
6,000.0	1.71	107.32	5,544.2	-607.5	1,948.2	2,040.8	3.00	-3.00	0.00
EOD @ Vertical - TOG									
6,056.9	0.00	0.00	5,601.0	-607.8	1,949.0	2,041.6	3.00	-3.00	0.00
6,100.0	0.00	0.00	5,644.1	-607.8	1,949.0	2,041.6	0.00	0.00	0.00
6,200.0	0.00	0.00	5,744.1	-607.8	1,949.0	2,041.6	0.00	0.00	0.00
6,300.0	0.00	0.00	5,844.1	-607.8	1,949.0	2,041.6	0.00	0.00	0.00
6,400.0	0.00	0.00	5,944.1	-607.8	1,949.0	2,041.6	0.00	0.00	0.00
6,500.0	0.00	0.00	6,044.1	-607.8	1,949.0	2,041.6	0.00	0.00	0.00
6,600.0	0.00	0.00	6,144.1	-607.8	1,949.0	2,041.6	0.00	0.00	0.00
6,700.0	0.00	0.00	6,244.1	-607.8	1,949.0	2,041.6	0.00	0.00	0.00
6,800.0	0.00	0.00	6,344.1	-607.8	1,949.0	2,041.6	0.00	0.00	0.00
6,900.0	0.00	0.00	6,444.1	-607.8	1,949.0	2,041.6	0.00	0.00	0.00
7,000.0	0.00	0.00	6,544.1	-607.8	1,949.0	2,041.6	0.00	0.00	0.00
Cameo									
7,056.9	0.00	0.00	6,601.0	-607.8	1,949.0	2,041.6	0.00	0.00	0.00
7,100.0	0.00	0.00	6,644.1	-607.8	1,949.0	2,041.6	0.00	0.00	0.00
7,200.0	0.00	0.00	6,744.1	-607.8	1,949.0	2,041.6	0.00	0.00	0.00
7,300.0	0.00	0.00	6,844.1	-607.8	1,949.0	2,041.6	0.00	0.00	0.00
7,400.0	0.00	0.00	6,944.1	-607.8	1,949.0	2,041.6	0.00	0.00	0.00
7,500.0	0.00	0.00	7,044.1	-607.8	1,949.0	2,041.6	0.00	0.00	0.00
7,600.0	0.00	0.00	7,144.1	-607.8	1,949.0	2,041.6	0.00	0.00	0.00
7,700.0	0.00	0.00	7,244.1	-607.8	1,949.0	2,041.6	0.00	0.00	0.00
Base Cameo Coal									
7,716.9	0.00	0.00	7,261.0	-607.8	1,949.0	2,041.6	0.00	0.00	0.00
Rollins									
7,756.9	0.00	0.00	7,301.0	-607.8	1,949.0	2,041.6	0.00	0.00	0.00
7,800.0	0.00	0.00	7,344.1	-607.8	1,949.0	2,041.6	0.00	0.00	0.00
7,900.0	0.00	0.00	7,444.1	-607.8	1,949.0	2,041.6	0.00	0.00	0.00
8,000.0	0.00	0.00	7,544.1	-607.8	1,949.0	2,041.6	0.00	0.00	0.00
TD @ 8007' MD / 7551' TVD									
8,006.9	0.00	0.00	7,551.0	-607.8	1,949.0	2,041.6	0.00	0.00	0.00



Well Planning Report



Database:	EDM5002	Local Co-ordinate Reference:	Well Gunderson BCU 20-07E
Company:	Laramie Energy, LLC	TVD Reference:	well @ 7176.0usft (H&P #522)
Project:	Mesa County, CO	MD Reference:	well @ 7176.0usft (H&P #522)
Site:	Gunderson 20-03 Pad	North Reference:	True
Well:	Gunderson BCU 20-07E	Survey Calculation Method:	Minimum Curvature
Wellbore:	Wellbore #1		
Design:	Design #3		

Design Targets

Target Name - hit/miss target - Shape	Dip Angle (°)	Dip Dir. (°)	TVD (usft)	+N/-S (usft)	+E/-W (usft)	Northing (usft)	Easting (usft)	Latitude	Longitude
PBHL - Gunderson BCU - plan hits target center - Circle (radius 50.0)	0.00	0.00	7,551.0	-607.8	1,949.0	1,529,611.47	2,352,163.47	39.265114	-107.788397

Casing Points

Measured Depth (usft)	Vertical Depth (usft)	Name	Casing Diameter (")	Hole Diameter (")
1,530.0	1,501.7	8 5/8"	8-5/8	11

Formations

Measured Depth (usft)	Vertical Depth (usft)	Name	Lithology	Dip (°)	Dip Direction (°)
2,595.0	2,451.0	G' Sand		0.00	
4,671.0	4,301.0	Williams Fork		0.00	
6,056.9	5,601.0	TOG		0.00	
7,056.9	6,601.0	Cameo		0.00	
7,716.9	7,261.0	Base Cameo Coal		0.00	
7,756.9	7,301.0	Rollins		0.00	

Plan Annotations

Measured Depth (usft)	Vertical Depth (usft)	Local Coordinates		Comment
		+N/-S (usft)	+E/-W (usft)	
675.0	675.0	0.0	0.0	KOP / Build 3" / 100'
1,574.5	1,541.6	-61.9	198.5	EOB @ 26.98° Inc. / 107.32° Azm
5,157.4	4,734.4	-545.9	1,750.6	Drop 3" / 100'
6,056.9	5,601.0	-607.8	1,949.0	EOD @ Vertical
8,006.9	7,551.0	-607.8	1,949.0	TD @ 8007' MD / 7551' TVD