



Corporate Office
1775 Sherman Street, #3000
Denver, Colorado 80203
303.860.5800
www.pdce.com

February 13, 2017

Department of Natural Resources
Oil and Gas Conservation Commission
The Chancery Building
Attn: Matt Lepore
1120 Lincoln St., Suite 801
Denver, CO 80203

Re: **30 Day Certification Letter – Rule 318Ae**
Sandin 24V-341
SWNE Section 24, T5N-R65W, 6th PM
Weld County, Colorado

Dear Director,

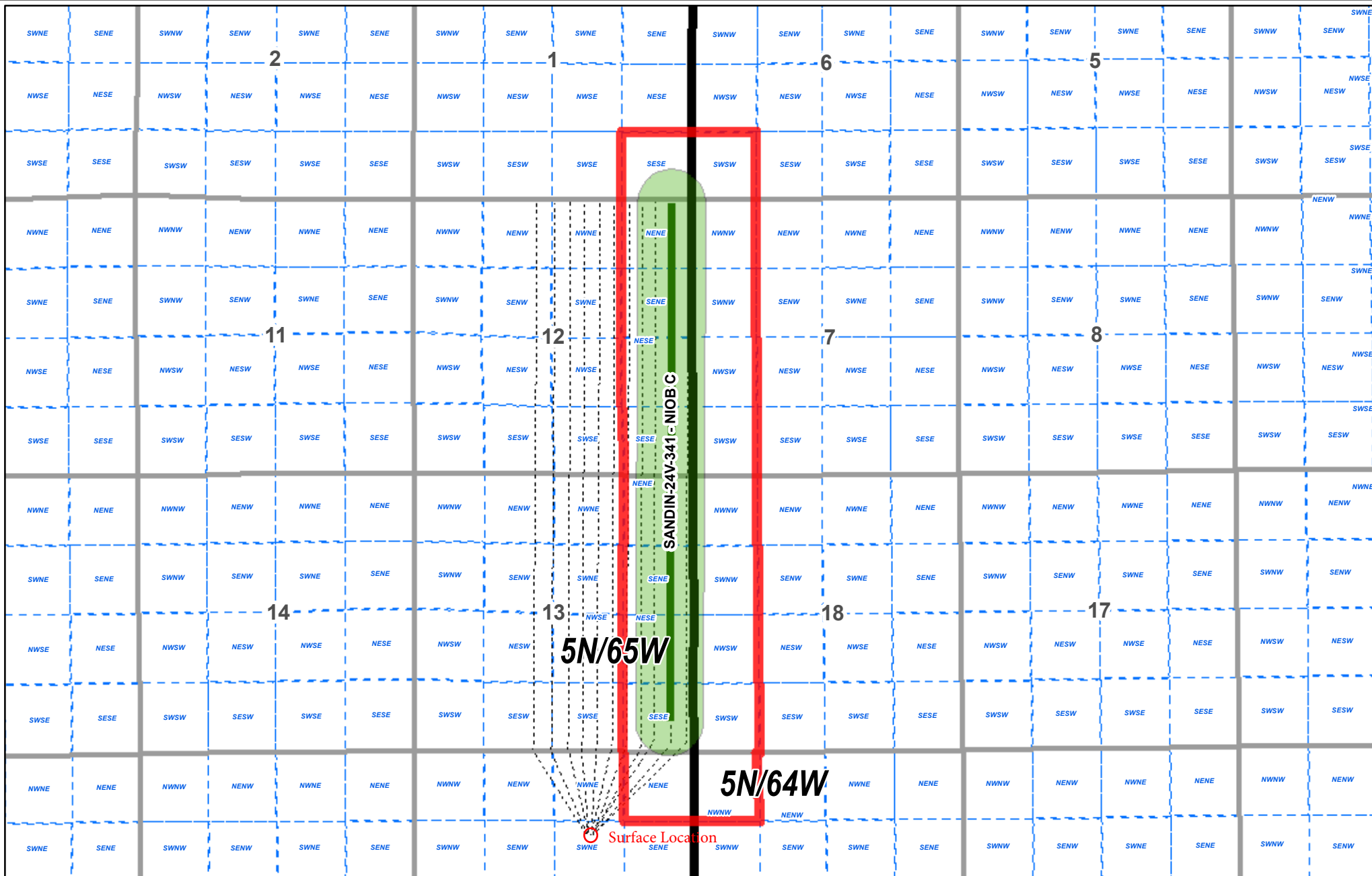
PDC Energy, Inc. ("PDC") hereby certifies to the Director that a thirty (30-day) notice has been given by certified mail to all owners in the proposed wellbore spacing unit consisting of T5N-R64W Section 6: SWSW, Section 7: W2W2, Section 18: W2W2, Section 19: NWNW; T5N-R65W Section 1: SESE, Section 12: E2E2, Section 13: E2E2, Section 24: NENE, 800 acres. We have not received any objections to such well location or proposed spacing unit, therefore, PDC hereby requests the Director to approve the well.

If you should have any questions or concerns regarding this permit, please contact the undersigned at (303) 318-6102.

Sincerely,

A handwritten signature in blue ink that reads "Venessa Chase".

Venessa Chase
Permitting Supervisor - Wattenberg
PDC Energy



DJ Preliminary Proposed Spacing Unit

SANDIN 24V-341 NIOB C

Date: 1/6/2017

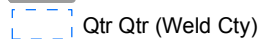
Legend



Townships



Sections



Qtr Qtr (Weld Cty)



Preliminary Proposed Spacing Unit



Spaced Wellbore



460' Foot Wellbore Buffer

Disclaimer:

PDC Energy, Inc. makes no representation or warranty regarding the accuracy or completeness of this map, which is being provided as a courtesy only. PDC Energy, Inc. expressly disclaims all liability and responsibility for any representation, warranty, statement or depiction in this map, whether express, statutory or implied, as to the content, character or nature of any information contained in this map, including, but not limited to, the leasehold acreage positions, well locations and statuses or any other information depicted. Any conclusions derived from this map are at the sole cost, risk and expense of the user. © 2014 PDC Energy, Inc. All Rights Reserved.

