

EXTRACTION OIL & GAS

Weld County

Sec 21-T5N-R65W

AD-DAIRY 4-20-24

ORIGINAL WELLBORE

Plan: PROPOSAL #1

Standard Planning Report

13 February, 2017



Azimuths to True North
Magnetic North: 8° 28'

Magnetic Field
Strength: 52516.2snT
Dip Angle: 66.88°
Date: 5/22/2016
Model: IGRF2015

WELL DETAILS: AD-DAIRY 4-20-24

+N/-S	+E/-W	Northing	Ground Level:	4638.0			
0.0	0.0	1383308.78	Easting	Latitude	Longitude		Slot
			3229414.22	40° 22' 57.576 N	104° 40' 35.328 W		

ANNOTATIONS

MD	Inc	Azi	TVD	+N/-S	+E/-W	Vsect	Departure	Annotation
730.0	0.00	0.00	730.0	0.0	0.0	0.0	0.0	Build 2°/100'
1218.5	9.77	195.57	1216.1	-40.0	-11.2	-40.0	41.5	Hold 9.77° Inc
6549.1	9.77	195.57	6469.5	-911.3	-254.0	-911.3	946.1	KOP, Build 10°/100'
7424.1	90.00	270.68	7010.0	-994.5	-827.4	-994.5	1536.1	LP @ 90° Inc, 270.68° Azm Hold
19741.5	90.00	270.68	7010.0	-848.9	-13143.9	-848.9	13853.5	TD at 19741.5' MD

SECTION DETAILS

Sec	MD	Inc	Azi	TVD	+N-S	+E-W	Dleg	TFace	VSec	Target
1	0.0	0.00	0.00	0.0	0.0	0.0	0.00	0.00	0.0	
2	730.0	0.00	0.00	730.0	0.0	0.0	0.00	0.00	0.0	
3	1218.5	9.77	195.57	1216.1	-40.0	-11.2	2.00	195.57	13.7	
4	6549.1	9.77	195.57	6469.5	-911.3	-254.0	0.00	0.00	312.2	
5	7424.1	90.00	270.68	7010.0	-994.5	-827.4	10.00	75.31	889.8	HZ LANDING PNT -
6	19741.5	90.00	270.68	7010.0	-848.9	-13143.9	0.00	0.00	13171.3	BHL - AD-DAIRY 4-

DESIGN TARGET DETAILS

Name	TVD	+N/-S	+E/-W	Northing	Easting	Latitude	Longitude	Shape
BHL - AD-DAIRY 4-20-24	7010.0	-848.9	-13143.9	1382337.80	3216278.73	40° 22' 49.152 N	104° 43' 25.176 W	Point
HZ LANDING PNT - AD-DAIRY 4-20-24	7010.0	-994.5	-827.4	1382306.63	3228596.07	40° 22' 47.748 N	104° 40' 46.020 W	Point

FORMATION TOP DETAILS

TVDPATH	MDPATH	FORMATION
3800.0	3840.4	PARKMAN
4550.0	4601.4	SUSSEX
5060.0	5118.9	SHANNON
6865.0	7004.4	SHARON SPRINGS
6890.0	7043.8	NIOBRARA

PROJECT DETAILS: Weld County

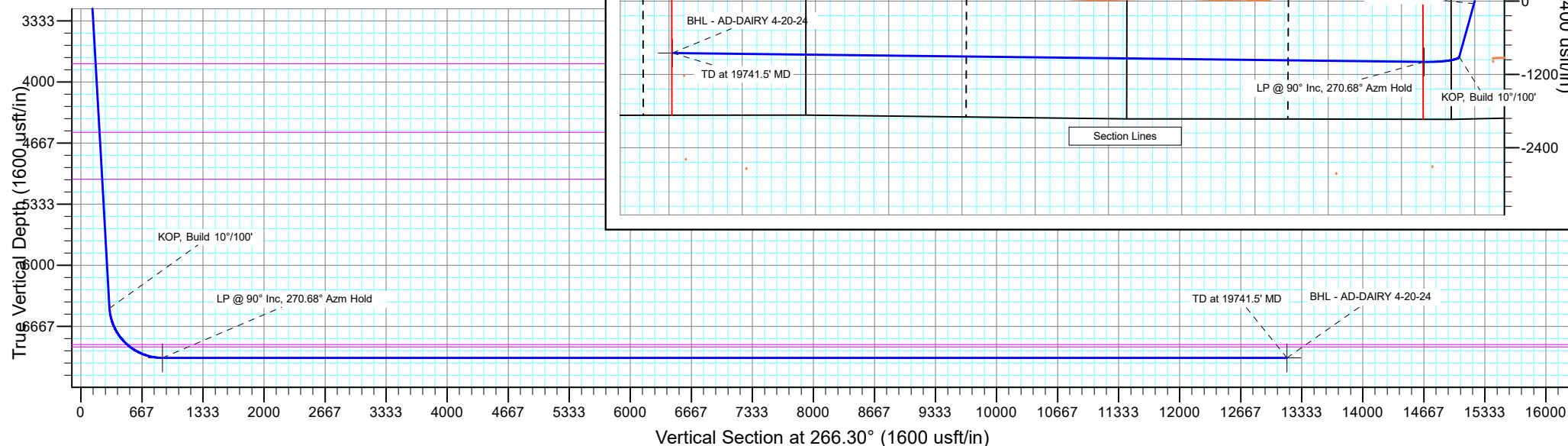
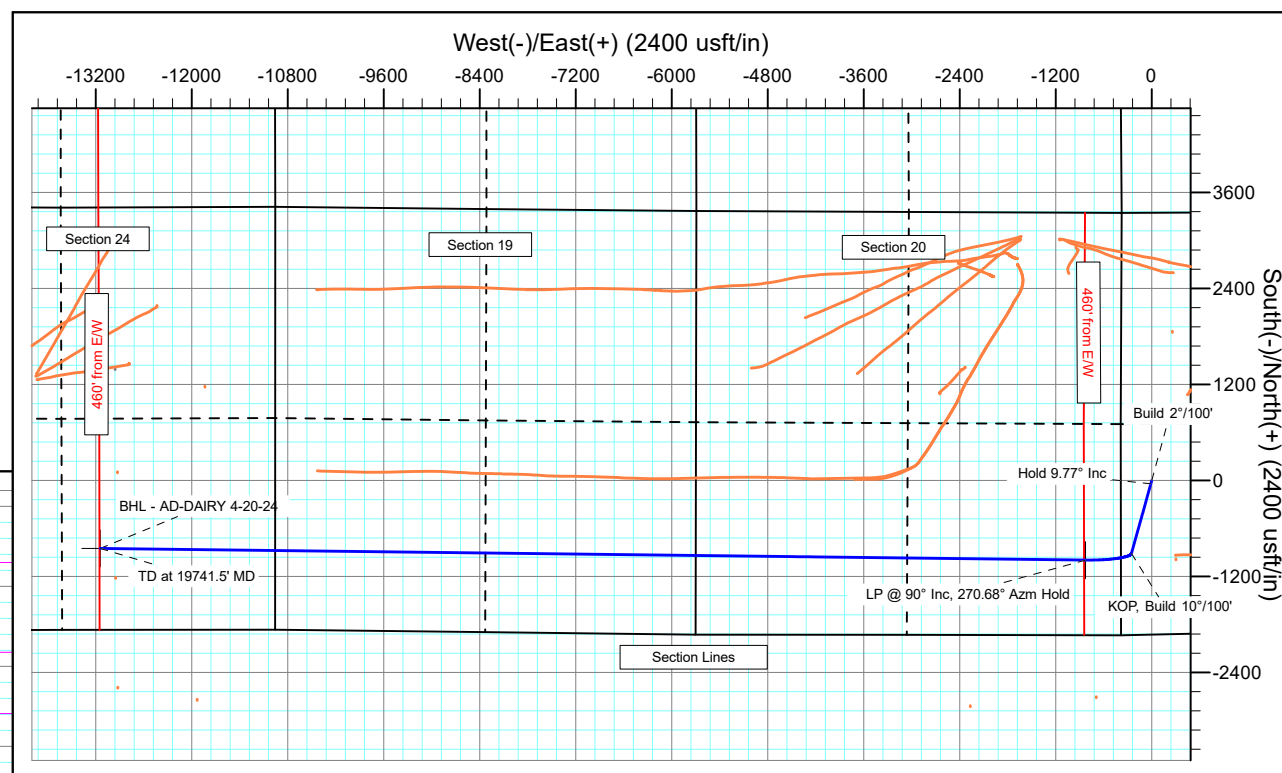
Geodetic System: US State Plane 1983
Datum: North American Datum 1983
Ellipsoid: GRS 1980
Zone: Colorado Northern Zone

System Datum: Mean Sea Level

SHL:
368' FWL, 1924' FSL
Sec 21-T5N-R65W

LP"
938' FSL, 460' FEL
Sec 20-T5N-R65W

BHL:
1018' FSL, 2207' FEL
Sec 24-T5N-R66W



Planning Report

Database:	EDT_32Bit_ODBC	Local Co-ordinate Reference:	Well AD-DAIRY 4-20-24
Company:	EXTRACTION OIL & GAS	TVD Reference:	KB-EST @ 4655.0usft (Original Well Elev)
Project:	Weld County	MD Reference:	KB-EST @ 4655.0usft (Original Well Elev)
Site:	Sec 21-T5N-R65W	North Reference:	True
Well:	AD-DAIRY 4-20-24	Survey Calculation Method:	Minimum Curvature
Wellbore:	ORIGINAL WELLBORE		
Design:	PROPOSAL #1		

Project	Weld County		
Map System:	US State Plane 1983	System Datum:	Mean Sea Level
Geo Datum:	North American Datum 1983		
Map Zone:	Colorado Northern Zone		

Site		Sec 21-T5N-R65W			
Site Position:		Northing:	1,383,619.20 usft	Latitude:	40° 23' 0.636 N
From:	Lat/Long	Easting:	3,229,494.91 usft	Longitude:	104° 40' 34.248 W
Position Uncertainty:	0.0 usft	Slot Radius:	13.200 in	Grid Convergence:	0.53 °

Well	AD-DAIRY 4-20-24					
Well Position	+N/-S	-309.7 usft	Northing:	1,383,308.78 usft	Latitude:	40° 22' 57.576 N
	+E/-W	-83.6 usft	Easting:	3,229,414.22 usft	Longitude:	104° 40' 35.328 W
Position Uncertainty		0.0 usft	Wellhead Elevation:		Ground Level:	4,638.0 usft

Wellbore	ORIGINAL WELLBORE				
Magnetics	Model Name	Sample Date	Declination (°)	Dip Angle (°)	Field Strength (nT)
	IGRF2015	5/22/2016	8.28	66.88	52,516.17316259

Design	PROPOSAL #1			
Audit Notes:				
Version:	Phase:	PROTOTYPE	Tie On Depth:	0.0
Vertical Section:	Depth From (TVD) (usft)	+N/-S (usft)	+E/-W (usft)	Direction (°)
	0.0	0.0	0.0	0.00

Plan Survey Tool Program			Date	2/13/2017	
Depth From (usft)	Depth To (usft)	Survey (Wellbore)	Tool Name	Remarks	
1	0.0	19,741.5	PROPOSAL #1 (ORIGINAL WEL	MWD OWSG Rev 2	
				OWSG MWD - Standard	

Plan Sections										
Measured Depth (usft)	Inclination (°)	Azimuth (°)	Vertical Depth (usft)	+N/-S (usft)	+E/-W (usft)	Dogleg Rate (°/100ft)	Build Rate (°/100ft)	Turn Rate (°/100ft)	TFO (°)	Target
0.0	0.00	0.00	0.0	0.0	0.0	0.00	0.00	0.00	0.00	
730.0	0.00	0.00	730.0	0.0	0.0	0.00	0.00	0.00	0.00	
1,218.5	9.77	195.57	1,216.1	-40.0	-11.2	2.00	2.00	0.00	195.57	
6,549.1	9.77	195.57	6,469.5	-911.3	-254.0	0.00	0.00	0.00	0.00	
7,424.1	90.00	270.68	7,010.0	-994.5	-827.4	10.00	9.17	8.58	75.31	HZ LANDING PNT - /
19,741.5	90.00	270.68	7,010.0	-848.9	-13,143.9	0.00	0.00	0.00	0.00	BHL - AD-DAIRY 4-20

Planning Report

Database:	EDT_32Bit_ODBC	Local Co-ordinate Reference:	Well AD-DAIRY 4-20-24
Company:	EXTRACTION OIL & GAS	TVD Reference:	KB-EST @ 4655.0usft (Original Well Elev)
Project:	Weld County	MD Reference:	KB-EST @ 4655.0usft (Original Well Elev)
Site:	Sec 21-T5N-R65W	North Reference:	True
Well:	AD-DAIRY 4-20-24	Survey Calculation Method:	Minimum Curvature
Wellbore:	ORIGINAL WELLBORE		
Design:	PROPOSAL #1		

Planned Survey									
Measured Depth (usft)	Inclination (°)	Azimuth (°)	Vertical Depth (usft)	+N/-S (usft)	+E/-W (usft)	Vertical Section (usft)	Dogleg Rate (°/100ft)	Build Rate (°/100ft)	Turn Rate (°/100ft)
0.0	0.00	0.00	0.0	0.0	0.0	0.0	0.00	0.00	0.00
100.0	0.00	0.00	100.0	0.0	0.0	0.0	0.00	0.00	0.00
200.0	0.00	0.00	200.0	0.0	0.0	0.0	0.00	0.00	0.00
300.0	0.00	0.00	300.0	0.0	0.0	0.0	0.00	0.00	0.00
400.0	0.00	0.00	400.0	0.0	0.0	0.0	0.00	0.00	0.00
500.0	0.00	0.00	500.0	0.0	0.0	0.0	0.00	0.00	0.00
600.0	0.00	0.00	600.0	0.0	0.0	0.0	0.00	0.00	0.00
700.0	0.00	0.00	700.0	0.0	0.0	0.0	0.00	0.00	0.00
730.0	0.00	0.00	730.0	0.0	0.0	0.0	0.00	0.00	0.00
Build 2°/100'									
800.0	1.40	195.57	800.0	-0.8	-0.2	-0.8	2.00	2.00	0.00
900.0	3.40	195.57	899.9	-4.9	-1.4	-4.9	2.00	2.00	0.00
1,000.0	5.40	195.57	999.6	-12.2	-3.4	-12.2	2.00	2.00	0.00
1,100.0	7.40	195.57	1,099.0	-23.0	-6.4	-23.0	2.00	2.00	0.00
1,200.0	9.40	195.57	1,197.9	-37.1	-10.3	-37.1	2.00	2.00	0.00
1,218.5	9.77	195.57	1,216.1	-40.0	-11.2	-40.0	2.00	2.00	0.00
Hold 9.77° Inc									
1,300.0	9.77	195.57	1,296.5	-53.3	-14.9	-53.3	0.00	0.00	0.00
1,400.0	9.77	195.57	1,395.0	-69.7	-19.4	-69.7	0.00	0.00	0.00
1,500.0	9.77	195.57	1,493.6	-86.0	-24.0	-86.0	0.00	0.00	0.00
1,600.0	9.77	195.57	1,592.1	-102.4	-28.5	-102.4	0.00	0.00	0.00
1,700.0	9.77	195.57	1,690.7	-118.7	-33.1	-118.7	0.00	0.00	0.00
1,800.0	9.77	195.57	1,789.2	-135.1	-37.6	-135.1	0.00	0.00	0.00
1,900.0	9.77	195.57	1,887.8	-151.4	-42.2	-151.4	0.00	0.00	0.00
2,000.0	9.77	195.57	1,986.3	-167.8	-46.8	-167.8	0.00	0.00	0.00
2,100.0	9.77	195.57	2,084.9	-184.1	-51.3	-184.1	0.00	0.00	0.00
2,200.0	9.77	195.57	2,183.4	-200.5	-55.9	-200.5	0.00	0.00	0.00
2,300.0	9.77	195.57	2,282.0	-216.8	-60.4	-216.8	0.00	0.00	0.00
2,400.0	9.77	195.57	2,380.5	-233.1	-65.0	-233.1	0.00	0.00	0.00
2,500.0	9.77	195.57	2,479.1	-249.5	-69.5	-249.5	0.00	0.00	0.00
2,600.0	9.77	195.57	2,577.6	-265.8	-74.1	-265.8	0.00	0.00	0.00
2,700.0	9.77	195.57	2,676.2	-282.2	-78.6	-282.2	0.00	0.00	0.00
2,800.0	9.77	195.57	2,774.7	-298.5	-83.2	-298.5	0.00	0.00	0.00
2,900.0	9.77	195.57	2,873.3	-314.9	-87.8	-314.9	0.00	0.00	0.00
3,000.0	9.77	195.57	2,971.8	-331.2	-92.3	-331.2	0.00	0.00	0.00
3,100.0	9.77	195.57	3,070.4	-347.6	-96.9	-347.6	0.00	0.00	0.00
3,200.0	9.77	195.57	3,168.9	-363.9	-101.4	-363.9	0.00	0.00	0.00
3,300.0	9.77	195.57	3,267.5	-380.3	-106.0	-380.3	0.00	0.00	0.00
3,400.0	9.77	195.57	3,366.0	-396.6	-110.5	-396.6	0.00	0.00	0.00
3,500.0	9.77	195.57	3,464.6	-412.9	-115.1	-412.9	0.00	0.00	0.00
3,600.0	9.77	195.57	3,563.1	-429.3	-119.6	-429.3	0.00	0.00	0.00
3,700.0	9.77	195.57	3,661.7	-445.6	-124.2	-445.6	0.00	0.00	0.00
3,800.0	9.77	195.57	3,760.2	-462.0	-128.8	-462.0	0.00	0.00	0.00
3,840.4	9.77	195.57	3,800.0	-468.6	-130.6	-468.6	0.00	0.00	0.00
PARKMAN									
3,900.0	9.77	195.57	3,858.8	-478.3	-133.3	-478.3	0.00	0.00	0.00
4,000.0	9.77	195.57	3,957.3	-494.7	-137.9	-494.7	0.00	0.00	0.00
4,100.0	9.77	195.57	4,055.9	-511.0	-142.4	-511.0	0.00	0.00	0.00
4,200.0	9.77	195.57	4,154.4	-527.4	-147.0	-527.4	0.00	0.00	0.00
4,300.0	9.77	195.57	4,253.0	-543.7	-151.5	-543.7	0.00	0.00	0.00
4,400.0	9.77	195.57	4,351.5	-560.1	-156.1	-560.1	0.00	0.00	0.00
4,500.0	9.77	195.57	4,450.1	-576.4	-160.6	-576.4	0.00	0.00	0.00
4,600.0	9.77	195.57	4,548.6	-592.7	-165.2	-592.7	0.00	0.00	0.00

Planning Report

Database:	EDT_32Bit_ODBC	Local Co-ordinate Reference:	Well AD-DAIRY 4-20-24
Company:	EXTRACTION OIL & GAS	TVD Reference:	KB-EST @ 4655.0usft (Original Well Elev)
Project:	Weld County	MD Reference:	KB-EST @ 4655.0usft (Original Well Elev)
Site:	Sec 21-T5N-R65W	North Reference:	True
Well:	AD-DAIRY 4-20-24	Survey Calculation Method:	Minimum Curvature
Wellbore:	ORIGINAL WELLBORE		
Design:	PROPOSAL #1		

Planned Survey									
Measured Depth (usft)	Inclination (°)	Azimuth (°)	Vertical Depth (usft)	+N/-S (usft)	+E/-W (usft)	Vertical Section (usft)	Dogleg Rate (°/100ft)	Build Rate (°/100ft)	Turn Rate (°/100ft)
4,601.4	9.77	195.57	4,550.0	-593.0	-165.3	-593.0	0.00	0.00	0.00
SUSSEX									
4,700.0	9.77	195.57	4,647.1	-609.1	-169.7	-609.1	0.00	0.00	0.00
4,800.0	9.77	195.57	4,745.7	-625.4	-174.3	-625.4	0.00	0.00	0.00
4,900.0	9.77	195.57	4,844.2	-641.8	-178.9	-641.8	0.00	0.00	0.00
5,000.0	9.77	195.57	4,942.8	-658.1	-183.4	-658.1	0.00	0.00	0.00
5,100.0	9.77	195.57	5,041.3	-674.5	-188.0	-674.5	0.00	0.00	0.00
5,118.9	9.77	195.57	5,060.0	-677.6	-188.8	-677.6	0.00	0.00	0.00
SHANNON									
5,200.0	9.77	195.57	5,139.9	-690.8	-192.5	-690.8	0.00	0.00	0.00
5,300.0	9.77	195.57	5,238.4	-707.2	-197.1	-707.2	0.00	0.00	0.00
5,400.0	9.77	195.57	5,337.0	-723.5	-201.6	-723.5	0.00	0.00	0.00
5,500.0	9.77	195.57	5,435.5	-739.9	-206.2	-739.9	0.00	0.00	0.00
5,600.0	9.77	195.57	5,534.1	-756.2	-210.7	-756.2	0.00	0.00	0.00
5,700.0	9.77	195.57	5,632.6	-772.5	-215.3	-772.5	0.00	0.00	0.00
5,800.0	9.77	195.57	5,731.2	-788.9	-219.9	-788.9	0.00	0.00	0.00
5,900.0	9.77	195.57	5,829.7	-805.2	-224.4	-805.2	0.00	0.00	0.00
6,000.0	9.77	195.57	5,928.3	-821.6	-229.0	-821.6	0.00	0.00	0.00
6,100.0	9.77	195.57	6,026.8	-837.9	-233.5	-837.9	0.00	0.00	0.00
6,200.0	9.77	195.57	6,125.4	-854.3	-238.1	-854.3	0.00	0.00	0.00
6,300.0	9.77	195.57	6,223.9	-870.6	-242.6	-870.6	0.00	0.00	0.00
6,400.0	9.77	195.57	6,322.5	-887.0	-247.2	-887.0	0.00	0.00	0.00
6,500.0	9.77	195.57	6,421.0	-903.3	-251.7	-903.3	0.00	0.00	0.00
6,549.1	9.77	195.57	6,469.5	-911.3	-254.0	-911.3	0.00	0.00	0.00
KOP, Build 10°/100'									
6,600.0	12.09	219.74	6,519.4	-919.6	-258.6	-919.6	10.00	4.57	47.50
6,650.0	15.69	234.36	6,568.0	-927.6	-267.4	-927.6	10.00	7.19	29.24
6,700.0	19.89	243.30	6,615.6	-935.3	-280.5	-935.3	10.00	8.40	17.89
6,750.0	24.39	249.14	6,661.9	-942.8	-297.8	-942.8	10.00	8.99	11.69
6,800.0	29.04	253.24	6,706.5	-950.0	-319.0	-950.0	10.00	9.30	8.19
6,850.0	33.78	256.28	6,749.2	-956.8	-344.2	-956.8	10.00	9.49	6.08
6,900.0	38.59	258.64	6,789.6	-963.2	-373.0	-963.2	10.00	9.60	4.73
6,950.0	43.43	260.55	6,827.3	-969.1	-405.2	-969.1	10.00	9.68	3.82
7,000.0	48.29	262.15	6,862.1	-974.5	-440.7	-974.5	10.00	9.73	3.19
7,004.4	48.72	262.28	6,865.0	-974.9	-444.0	-974.9	10.00	9.76	2.93
SHARON SPRINGS									
7,043.8	52.57	263.36	6,890.0	-978.7	-474.2	-978.7	10.00	9.77	2.75
NIOBRARA									
7,050.0	53.18	263.52	6,893.7	-979.3	-479.1	-979.3	10.00	9.79	2.58
7,100.0	58.08	264.73	6,921.9	-983.5	-520.2	-983.5	10.00	9.80	2.41
7,150.0	62.99	265.81	6,946.5	-987.1	-563.5	-987.1	10.00	9.82	2.17
7,200.0	67.91	266.80	6,967.3	-990.0	-608.9	-990.0	10.00	9.84	1.99
7,250.0	72.83	267.73	6,984.1	-992.2	-655.9	-992.2	10.00	9.85	1.85
7,300.0	77.76	268.61	6,996.8	-993.8	-704.2	-993.8	10.00	9.85	1.76
7,350.0	82.69	269.45	7,005.3	-994.6	-753.5	-994.6	10.00	9.86	1.69
7,400.0	87.62	270.28	7,009.5	-994.7	-803.3	-994.7	10.00	9.86	1.65
7,424.1	90.00	270.68	7,010.0	-994.5	-827.4	-994.5	10.00	9.86	1.64
LP @ 90° Inc, 270.68° Azm Hold									
7,500.0	90.00	270.68	7,010.0	-993.6	-903.3	-993.6	0.00	0.00	0.00
7,600.0	90.00	270.68	7,010.0	-992.4	-1,003.3	-992.4	0.00	0.00	0.00
7,700.0	90.00	270.68	7,010.0	-991.2	-1,103.3	-991.2	0.00	0.00	0.00
7,800.0	90.00	270.68	7,010.0	-990.1	-1,203.3	-990.1	0.00	0.00	0.00
7,900.0	90.00	270.68	7,010.0	-988.9	-1,303.3	-988.9	0.00	0.00	0.00

Planning Report

Database:	EDT_32Bit_ODBC	Local Co-ordinate Reference:	Well AD-DAIRY 4-20-24
Company:	EXTRACTION OIL & GAS	TVD Reference:	KB-EST @ 4655.0usft (Original Well Elev)
Project:	Weld County	MD Reference:	KB-EST @ 4655.0usft (Original Well Elev)
Site:	Sec 21-T5N-R65W	North Reference:	True
Well:	AD-DAIRY 4-20-24	Survey Calculation Method:	Minimum Curvature
Wellbore:	ORIGINAL WELLBORE		
Design:	PROPOSAL #1		

Planned Survey										
Measured Depth (usft)	Inclination (°)	Azimuth (°)	Vertical Depth (usft)	+N/-S (usft)	+E/-W (usft)	Vertical Section (usft)	Dogleg Rate (°/100ft)	Build Rate (°/100ft)	Turn Rate (°/100ft)	
8,000.0	90.00	270.68	7,010.0	-987.7	-1,403.2	-987.7	0.00	0.00	0.00	
8,100.0	90.00	270.68	7,010.0	-986.5	-1,503.2	-986.5	0.00	0.00	0.00	
8,200.0	90.00	270.68	7,010.0	-985.3	-1,603.2	-985.3	0.00	0.00	0.00	
8,300.0	90.00	270.68	7,010.0	-984.2	-1,703.2	-984.2	0.00	0.00	0.00	
8,400.0	90.00	270.68	7,010.0	-983.0	-1,803.2	-983.0	0.00	0.00	0.00	
8,500.0	90.00	270.68	7,010.0	-981.8	-1,903.2	-981.8	0.00	0.00	0.00	
8,600.0	90.00	270.68	7,010.0	-980.6	-2,003.2	-980.6	0.00	0.00	0.00	
8,700.0	90.00	270.68	7,010.0	-979.4	-2,103.2	-979.4	0.00	0.00	0.00	
8,800.0	90.00	270.68	7,010.0	-978.2	-2,203.2	-978.2	0.00	0.00	0.00	
8,900.0	90.00	270.68	7,010.0	-977.1	-2,303.2	-977.1	0.00	0.00	0.00	
9,000.0	90.00	270.68	7,010.0	-975.9	-2,403.2	-975.9	0.00	0.00	0.00	
9,100.0	90.00	270.68	7,010.0	-974.7	-2,503.2	-974.7	0.00	0.00	0.00	
9,200.0	90.00	270.68	7,010.0	-973.5	-2,603.2	-973.5	0.00	0.00	0.00	
9,300.0	90.00	270.68	7,010.0	-972.3	-2,703.2	-972.3	0.00	0.00	0.00	
9,400.0	90.00	270.68	7,010.0	-971.1	-2,803.2	-971.1	0.00	0.00	0.00	
9,500.0	90.00	270.68	7,010.0	-970.0	-2,903.1	-970.0	0.00	0.00	0.00	
9,600.0	90.00	270.68	7,010.0	-968.8	-3,003.1	-968.8	0.00	0.00	0.00	
9,700.0	90.00	270.68	7,010.0	-967.6	-3,103.1	-967.6	0.00	0.00	0.00	
9,800.0	90.00	270.68	7,010.0	-966.4	-3,203.1	-966.4	0.00	0.00	0.00	
9,900.0	90.00	270.68	7,010.0	-965.2	-3,303.1	-965.2	0.00	0.00	0.00	
10,000.0	90.00	270.68	7,010.0	-964.1	-3,403.1	-964.1	0.00	0.00	0.00	
10,100.0	90.00	270.68	7,010.0	-962.9	-3,503.1	-962.9	0.00	0.00	0.00	
10,200.0	90.00	270.68	7,010.0	-961.7	-3,603.1	-961.7	0.00	0.00	0.00	
10,300.0	90.00	270.68	7,010.0	-960.5	-3,703.1	-960.5	0.00	0.00	0.00	
10,400.0	90.00	270.68	7,010.0	-959.3	-3,803.1	-959.3	0.00	0.00	0.00	
10,500.0	90.00	270.68	7,010.0	-958.1	-3,903.1	-958.1	0.00	0.00	0.00	
10,600.0	90.00	270.68	7,010.0	-957.0	-4,003.1	-957.0	0.00	0.00	0.00	
10,700.0	90.00	270.68	7,010.0	-955.8	-4,103.1	-955.8	0.00	0.00	0.00	
10,800.0	90.00	270.68	7,010.0	-954.6	-4,203.1	-954.6	0.00	0.00	0.00	
10,900.0	90.00	270.68	7,010.0	-953.4	-4,303.0	-953.4	0.00	0.00	0.00	
11,000.0	90.00	270.68	7,010.0	-952.2	-4,403.0	-952.2	0.00	0.00	0.00	
11,100.0	90.00	270.68	7,010.0	-951.1	-4,503.0	-951.1	0.00	0.00	0.00	
11,200.0	90.00	270.68	7,010.0	-949.9	-4,603.0	-949.9	0.00	0.00	0.00	
11,300.0	90.00	270.68	7,010.0	-948.7	-4,703.0	-948.7	0.00	0.00	0.00	
11,400.0	90.00	270.68	7,010.0	-947.5	-4,803.0	-947.5	0.00	0.00	0.00	
11,500.0	90.00	270.68	7,010.0	-946.3	-4,903.0	-946.3	0.00	0.00	0.00	
11,600.0	90.00	270.68	7,010.0	-945.1	-5,003.0	-945.1	0.00	0.00	0.00	
11,700.0	90.00	270.68	7,010.0	-944.0	-5,103.0	-944.0	0.00	0.00	0.00	
11,800.0	90.00	270.68	7,010.0	-942.8	-5,203.0	-942.8	0.00	0.00	0.00	
11,900.0	90.00	270.68	7,010.0	-941.6	-5,303.0	-941.6	0.00	0.00	0.00	
12,000.0	90.00	270.68	7,010.0	-940.4	-5,403.0	-940.4	0.00	0.00	0.00	
12,100.0	90.00	270.68	7,010.0	-939.2	-5,503.0	-939.2	0.00	0.00	0.00	
12,200.0	90.00	270.68	7,010.0	-938.1	-5,603.0	-938.1	0.00	0.00	0.00	
12,300.0	90.00	270.68	7,010.0	-936.9	-5,702.9	-936.9	0.00	0.00	0.00	
12,400.0	90.00	270.68	7,010.0	-935.7	-5,802.9	-935.7	0.00	0.00	0.00	
12,500.0	90.00	270.68	7,010.0	-934.5	-5,902.9	-934.5	0.00	0.00	0.00	
12,600.0	90.00	270.68	7,010.0	-933.3	-6,002.9	-933.3	0.00	0.00	0.00	
12,700.0	90.00	270.68	7,010.0	-932.1	-6,102.9	-932.1	0.00	0.00	0.00	
19,741.5	90.00	270.68	7,010.0	-848.9	-13,143.9	-848.9	0.00	0.00	0.00	
TD at 19741.5' MD										

Planning Report

Database:	EDT_32Bit_ODBC	Local Co-ordinate Reference:	Well AD-DAIRY 4-20-24
Company:	EXTRACTION OIL & GAS	TVD Reference:	KB-EST @ 4655.0usft (Original Well Elev)
Project:	Weld County	MD Reference:	KB-EST @ 4655.0usft (Original Well Elev)
Site:	Sec 21-T5N-R65W	North Reference:	True
Well:	AD-DAIRY 4-20-24	Survey Calculation Method:	Minimum Curvature
Wellbore:	ORIGINAL WELLBORE		
Design:	PROPOSAL #1		

Design Targets									
Target Name	Dip Angle	Dip Dir.	TVD	+N/-S	+E/-W	Northing	Easting	Latitude	Longitude
- hit/miss target	(°)	(°)	(usft)	(usft)	(usft)	(usft)	(usft)		
- Shape									
HZ LANDING PNT - AD-	0.00	0.00	7,010.0	-994.5	-827.4	1,382,306.63	3,228,596.07	40° 22' 47.748 N	104° 40' 46.020 W
- plan hits target center									
- Point									
BHL - AD-DAIRY 4-20-2	0.00	0.00	7,010.0	-848.9	-13,143.9	1,382,337.80	3,216,278.74	40° 22' 49.152 N	104° 43' 25.176 W
- plan hits target center									
- Point									

Formations						
Measured Depth	Vertical Depth	Name	Lithology	Dip	Dip Direction	
(usft)	(usft)			(°)	(°)	
3,840.4	3,800.0	PARKMAN				
4,601.4	4,550.0	SUSSEX				
5,118.9	5,060.0	SHANNON				
7,004.4	6,865.0	SHARON SPRINGS				
7,043.8	6,890.0	NIOBRARA				

Plan Annotations					
Measured Depth	Vertical Depth	Local Coordinates			
(usft)	(usft)	+N/-S	+E/-W	Comment	
(usft)	(usft)	(usft)	(usft)		
730.0	730.0	0.0	0.0	Build 2°/100'	
1,218.5	1,216.1	-40.0	-11.2	Hold 9.77° Inc	
6,549.1	6,469.5	-911.3	-254.0	KOP, Build 10°/100'	
7,424.1	7,010.0	-994.5	-827.4	LP @ 90° Inc, 270.68° Azm Hold	
19,741.5	7,010.0	-848.9	-13,143.9	TD at 19741.5' MD	