

EXTRACTION OIL & GAS

Weld County

Sec 21-T5N-R65W

AD-DAIRY 3-20-24

ORIGINAL WELLBORE

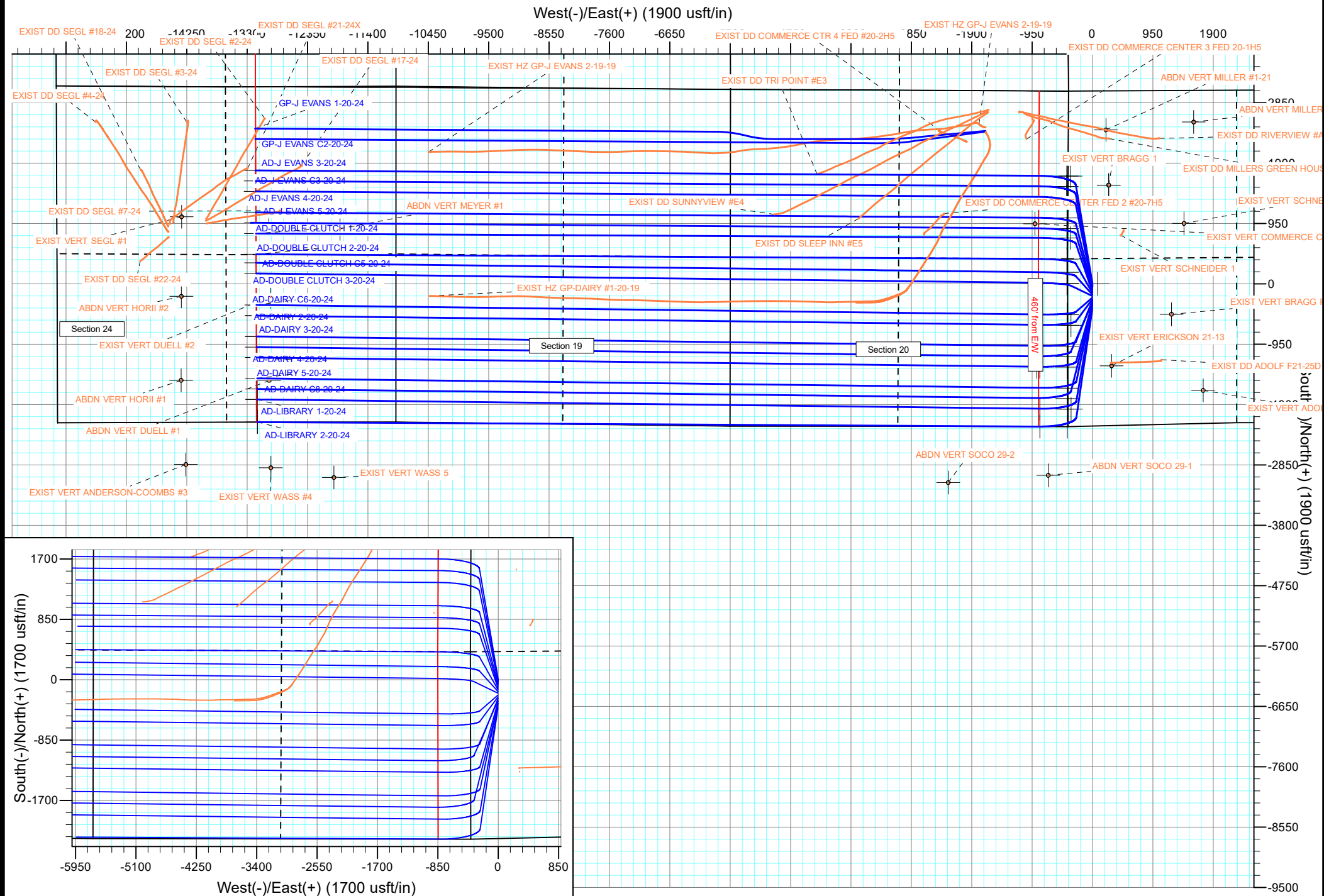
PROPOSAL #1

Anticollision Report

13 February, 2017



Project: Weld County
Site: Sec 21-T5N-R65W
Well: ARDREY SPIDER
ORIGINAL WELLBORE
PROPOSAL #1



Anticollision Report

Company:	EXTRACTION OIL & GAS	Local Co-ordinate Reference:	Well AD-DAIRY 3-20-24
Project:	Weld County	TVD Reference:	KB-EST @ 4655.0usft (Original Well Elev)
Reference Site:	Sec 21-T5N-R65W	MD Reference:	KB-EST @ 4655.0usft (Original Well Elev)
Site Error:	0.0 usft	North Reference:	True
Reference Well:	AD-DAIRY 3-20-24	Survey Calculation Method:	Minimum Curvature
Well Error:	0.0 usft	Output errors are at	2.00 sigma
Reference Wellbore	ORIGINAL WELLBORE	Database:	EDT_32Bit_ODBC
Reference Design:	PROPOSAL #1	Offset TVD Reference:	Offset Datum

Reference	PROPOSAL #1		
Filter type:	NO GLOBAL FILTER: Using user defined selection & filtering criteria		
Interpolation Method:	MD + Stations Interval 100.0usft	Error Model:	ISCWSA
Depth Range:	Unlimited	Scan Method:	Closest Approach 3D
Results Limited by:	Maximum center-center distance of 10,000.0 usft	Error Surface:	Pedal Curve
Warning Levels Evaluated at:	2.00 Sigma	Casing Method:	Not applied

Survey Tool Program	Date	2/13/2017		
From (usft)	To (usft)	Survey (Wellbore)	Tool Name	Description
0.0	19,719.6	PROPOSAL #1 (ORIGINAL WELLBORE)	MWD OWSG Rev 2	OWSG MWD - Standard

Summary						
Site Name	Reference Measured Depth (usft)	Offset Measured Depth (usft)	Distance Between Centres (usft)	Distance Between Ellipses (usft)	Separation Factor	Warning
Offset Well - Wellbore - Design						
Sec 20-T5N-R65W						
ABDN VERT MEYER #1 - Wellbore #1 - Design #1	18,430.0	7,144.0	1,710.8	1,253.6	3.742	CC, ES
ABDN VERT MEYER #1 - Wellbore #1 - Design #1	18,500.0	7,144.0	1,712.3	1,253.8	3.735	SF
EXIST DD COMMERCE CENTER 3 FED 20-1H5 - Wellb	2,195.6	2,262.5	2,987.5	2,975.7	251.769	CC
EXIST DD COMMERCE CENTER 3 FED 20-1H5 - Wellb	3,300.0	3,709.3	2,994.0	2,975.0	157.096	ES
EXIST DD COMMERCE CENTER 3 FED 20-1H5 - Wellb	9,700.0	7,106.9	3,847.5	3,765.9	47.175	SF
EXIST DD COMMERCE CENTER FED 2 #20-7H5 - Wel	8,929.0	7,034.2	2,063.3	1,985.2	26.422	CC
EXIST DD COMMERCE CENTER FED 2 #20-7H5 - Wel	9,000.0	7,035.0	2,064.5	1,985.1	25.970	ES
EXIST DD COMMERCE CENTER FED 2 #20-7H5 - Wel	9,500.0	7,040.7	2,140.9	2,053.3	24.462	SF
EXIST DD COMMERCE CTR 4 FED #20-2H5 - Wellbore	2,218.5	2,289.3	3,186.7	3,174.6	263.570	CC, ES
EXIST DD COMMERCE CTR 4 FED #20-2H5 - Wellbore	10,500.0	7,113.8	3,680.2	3,572.1	34.046	SF
EXIST DD MILLERS GREEN HOUSE #A10 - Wellbore #	2,603.5	3,112.4	2,860.5	2,838.8	131.795	CC
EXIST DD MILLERS GREEN HOUSE #A10 - Wellbore #	2,619.9	3,127.6	2,860.5	2,838.7	130.976	ES
EXIST DD MILLERS GREEN HOUSE #A10 - Wellbore #	8,700.0	7,239.9	4,035.6	3,961.1	54.167	SF
EXIST DD RIVERVIEW #A9 - Wellbore #1 - Wellbore #1	2,626.6	3,279.2	2,846.4	2,817.5	98.280	CC
EXIST DD RIVERVIEW #A9 - Wellbore #1 - Wellbore #1	2,700.0	3,322.3	2,846.9	2,817.2	95.926	ES
EXIST DD RIVERVIEW #A9 - Wellbore #1 - Wellbore #1	6,600.0	7,052.7	3,465.7	3,395.8	49.602	SF
EXIST DD SLEEP INN #E5 - Wellbore #1 - Wellbore #1	10,271.2	7,774.9	1,980.0	1,841.1	14.254	CC
EXIST DD SLEEP INN #E5 - Wellbore #1 - Wellbore #1	10,300.0	7,776.5	1,980.2	1,841.0	14.228	ES
EXIST DD SLEEP INN #E5 - Wellbore #1 - Wellbore #1	10,400.0	7,781.7	1,984.2	1,844.2	14.180	SF
EXIST DD SUNNYVIEW #E4 - Wellbore #1 - Wellbore #	11,569.4	8,127.7	2,025.8	1,825.4	10.111	CC
EXIST DD SUNNYVIEW #E4 - Wellbore #1 - Wellbore #	11,600.0	8,132.6	2,026.0	1,825.4	10.098	ES
EXIST DD SUNNYVIEW #E4 - Wellbore #1 - Wellbore #	11,700.0	8,148.4	2,029.8	1,828.6	10.088	SF
EXIST DD TRI POINT #E3 - Wellbore #1 - Wellbore #1	10,934.7	7,897.5	2,668.8	2,499.6	15.768	CC
EXIST DD TRI POINT #E3 - Wellbore #1 - Wellbore #1	11,000.0	7,893.0	2,669.6	2,499.3	15.674	ES
EXIST DD TRI POINT #E3 - Wellbore #1 - Wellbore #1	11,300.0	7,893.0	2,693.6	2,519.5	15.474	SF
EXIST HZ GP-DAIRY #1-20-19 - ORIGINAL WELLBORE	10,295.6	8,205.0	663.2	524.6	4.787	CC, ES, SF
EXIST HZ GP-DAIRY #1-20-19 - SIDETRACK - SIDETR	12,839.4	10,825.2	629.4	354.8	2.292	CC
EXIST HZ GP-DAIRY #1-20-19 - SIDETRACK - SIDETR	17,000.0	14,984.8	680.1	182.9	1.368	Level 3, ES, SF
EXIST HZ GP-J EVANS 2-19-19 - MWD SURVEYS - MW	15,500.0	15,500.0	2,987.7	2,464.0	5.705	SF
EXIST HZ GP-J EVANS 2-19-19 - MWD SURVEYS - MW	17,048.8	13,082.0	2,937.4	2,438.9	5.893	CC
EXIST HZ GP-J EVANS 2-19-19 - MWD SURVEYS - MW	17,100.0	13,082.0	2,937.8	2,438.4	5.882	ES
EXIST HZ GP-J EVANS 2-19-19 - SURFACE GYROS - S	0.0	17.6	3,204.2			
EXIST HZ GP-J EVANS 2-19-19 - SURFACE GYROS - S	13,700.0	1,163.0	8,644.3	8,562.0	104.994	SF
EXIST VERT COMMERCE CENTER #1 - Wellbore #1 - D	2,144.0	2,149.0	1,509.7	1,459.9	30.299	CC
EXIST VERT COMMERCE CENTER #1 - Wellbore #1 - D	2,300.0	2,304.9	1,512.0	1,458.5	28.271	ES
EXIST VERT COMMERCE CENTER #1 - Wellbore #1 - D	7,800.0	7,015.0	1,946.3	1,770.4	11.069	SF
GP-J EVANS 1-20-24 - ORIGINAL WELLBORE - PROPO	2,144.0	2,178.0	3,154.7	3,142.4	257.677	CC

CC - Min centre to center distance or convergent point, SF - min separation factor, ES - min ellipse separation

Anticollision Report

Company:	EXTRACTION OIL & GAS	Local Co-ordinate Reference:	Well AD-DAIRY 3-20-24
Project:	Weld County	TVD Reference:	KB-EST @ 4655.0usft (Original Well Elev)
Reference Site:	Sec 21-T5N-R65W	MD Reference:	KB-EST @ 4655.0usft (Original Well Elev)
Site Error:	0.0 usft	North Reference:	True
Reference Well:	AD-DAIRY 3-20-24	Survey Calculation Method:	Minimum Curvature
Well Error:	0.0 usft	Output errors are at	2.00 sigma
Reference Wellbore	ORIGINAL WELLBORE	Database:	EDT_32Bit_ODBC
Reference Design:	PROPOSAL #1	Offset TVD Reference:	Offset Datum

Summary						
Site Name	Reference Measured Depth (usft)	Offset Measured Depth (usft)	Distance Between Centres (usft)	Distance Between Ellipses (usft)	Separation Factor	Warning
Offset Well - Wellbore - Design						
Sec 20-T5N-R65W						
GP-J EVANS 1-20-24 - ORIGINAL WELLBORE - PROPO	19,719.6	17,073.4	3,274.5	2,617.2	4.982	ES, SF
GP-J EVANS C2-20-24 - ORIGINAL WELLBORE - PROP	19,719.6	17,242.3	3,107.6	2,450.2	4.728	CC, ES, SF

Anticollision Report

Company:	EXTRACTION OIL & GAS	Local Co-ordinate Reference:	Well AD-DAIRY 3-20-24
Project:	Weld County	TVD Reference:	KB-EST @ 4655.0usft (Original Well Elev)
Reference Site:	Sec 21-T5N-R65W	MD Reference:	KB-EST @ 4655.0usft (Original Well Elev)
Site Error:	0.0 usft	North Reference:	True
Reference Well:	AD-DAIRY 3-20-24	Survey Calculation Method:	Minimum Curvature
Well Error:	0.0 usft	Output errors are at	2.00 sigma
Reference Wellbore	ORIGINAL WELLBORE	Database:	EDT_32Bit_ODBC
Reference Design:	PROPOSAL #1	Offset TVD Reference:	Offset Datum

Summary						
Site Name	Reference Measured Depth (usft)	Offset Measured Depth (usft)	Distance Between Centres (usft)	Distance Between Ellipses (usft)	Separation Factor	Warning
Offset Well - Wellbore - Design						
Sec 21-T5N-R65W						
ABDN VERT MILLER #1-21 - Wellbore #1 - Design #1	2,144.0	2,147.0	2,695.2	2,645.4	54.112	CC
ABDN VERT MILLER #1-21 - Wellbore #1 - Design #1	2,200.0	2,203.0	2,695.8	2,644.6	52.728	ES
ABDN VERT MILLER #1-21 - Wellbore #1 - Design #1	7,250.0	7,006.2	3,515.1	3,348.2	21.059	SF
ABDN VERT MILLER F 21-3 - Wellbore #1 - Design #1	2,144.0	2,134.0	3,231.1	3,181.4	65.042	CC
ABDN VERT MILLER F 21-3 - Wellbore #1 - Design #1	2,200.0	2,190.0	3,231.6	3,180.6	63.373	ES
ABDN VERT MILLER F 21-3 - Wellbore #1 - Design #1	6,900.0	6,801.9	4,020.9	3,860.6	25.076	SF
ABDN VERT SOCO 29-1 - Wellbore #1 - Design #1	7,297.4	7,003.0	2,036.9	1,868.1	12.068	CC
ABDN VERT SOCO 29-1 - Wellbore #1 - Design #1	7,300.0	7,002.5	2,036.9	1,868.0	12.066	ES
ABDN VERT SOCO 29-1 - Wellbore #1 - Design #1	7,700.0	7,006.0	2,085.7	1,909.6	11.843	SF
ABDN VERT SOCO 29-2 - Wellbore #1 - Design #1	8,813.9	7,011.0	2,166.6	1,966.5	10.831	CC
ABDN VERT SOCO 29-2 - Wellbore #1 - Design #1	8,900.0	7,011.0	2,168.3	1,965.8	10.711	ES
ABDN VERT SOCO 29-2 - Wellbore #1 - Design #1	9,300.0	7,011.0	2,220.4	2,008.0	10.453	SF
AD-DAIRY 2-20-24 - ORIGINAL WELLBORE - PROPOS	2,144.0	2,144.0	21.9	6.9	1.462	Level 3, CC
AD-DAIRY 2-20-24 - ORIGINAL WELLBORE - PROPOS	19,719.6	19,689.8	327.8	-375.6	0.466	Level 1, ES, SF
AD-DAIRY 4-20-24 - ORIGINAL WELLBORE - PROPOS	700.0	700.0	47.4	42.8	10.293	CC
AD-DAIRY 4-20-24 - ORIGINAL WELLBORE - PROPOS	19,719.6	19,741.5	331.5	-371.8	0.471	Level 1, ES, SF
AD-DAIRY 5-20-24 - ORIGINAL WELLBORE - PROPOS	400.0	400.0	72.9	70.4	29.737	CC
AD-DAIRY 5-20-24 - ORIGINAL WELLBORE - PROPOS	19,605.7	85,278.9	659.3	-1,816.0	0.266	Level 1, ES, SF
AD-DAIRY C6-20-24 - ORIGINAL WELLBORE - PROPO	2,144.0	2,143.0	47.4	32.4	3.167	CC
AD-DAIRY C6-20-24 - ORIGINAL WELLBORE - PROPO	19,719.6	19,887.6	538.4	-114.0	0.825	Level 1, ES, SF
AD-DAIRY C7-20-24 - ORIGINAL WELLBORE - PROPO	1,700.0	1,700.0	25.5	13.7	2.166	CC
AD-DAIRY C7-20-24 - ORIGINAL WELLBORE - PROPO	19,719.4	19,868.0	268.7	-195.5	0.579	Level 1, ES, SF
AD-DAIRY C8-20-24 - ORIGINAL WELLBORE - PROPO	300.0	300.0	94.8	93.0	54.615	CC, ES
AD-DAIRY C8-20-24 - ORIGINAL WELLBORE - PROPO	19,719.6	19,943.7	853.2	171.9	1.252	Level 3, SF
AD-DOUBLE CLUTCH 1-20-24 - ORIGINAL WELLBORE	1,700.0	1,699.0	142.1	130.3	12.072	CC, ES
AD-DOUBLE CLUTCH 1-20-24 - ORIGINAL WELLBORE	19,719.6	19,721.7	1,621.0	917.7	2.305	SF
AD-DOUBLE CLUTCH 2-20-24 - ORIGINAL WELLBORE	2,144.0	2,143.0	120.2	105.3	8.041	CC, ES
AD-DOUBLE CLUTCH 2-20-24 - ORIGINAL WELLBORE	19,719.6	19,692.5	1,293.2	589.8	1.839	SF
AD-DOUBLE CLUTCH 3-20-24 - ORIGINAL WELLBORE	2,144.0	2,144.0	72.9	57.9	4.872	CC, ES
AD-DOUBLE CLUTCH 3-20-24 - ORIGINAL WELLBORE	19,719.6	19,595.1	990.7	288.3	1.410	Level 3, SF
AD-DOUBLE CLUTCH C5-20-24 - ORIGINAL WELLBOR	2,144.0	2,143.0	94.7	79.8	6.335	CC, ES
AD-DOUBLE CLUTCH C5-20-24 - ORIGINAL WELLBOR	19,719.6	19,882.7	1,177.3	484.4	1.699	SF
AD-J EVANS 3-20-24 - ORIGINAL WELLBORE - PROPO	100.0	99.0	262.3	262.0	875.508	CC, ES
AD-J EVANS 3-20-24 - ORIGINAL WELLBORE - PROPO	19,719.6	19,852.6	2,611.8	1,908.4	3.713	SF
AD-J EVANS 4-20-24 - ORIGINAL WELLBORE - PROPO	300.0	299.0	215.0	213.2	124.148	CC, ES
AD-J EVANS 4-20-24 - ORIGINAL WELLBORE - PROPO	19,719.6	19,792.4	2,284.0	1,580.7	3.247	SF
AD-J EVANS 5-20-24 - ORIGINAL WELLBORE - PROPO	400.0	399.0	193.1	190.6	78.860	CC, ES
AD-J EVANS 5-20-24 - ORIGINAL WELLBORE - PROPO	19,719.6	19,741.7	1,952.5	1,249.2	2.776	SF
AD-J EVANS C3-20-24 - ORIGINAL WELLBORE - PROP	200.0	199.0	240.5	239.4	237.024	CC, ES
AD-J EVANS C3-20-24 - ORIGINAL WELLBORE - PROP	19,719.6	20,027.0	2,457.0	1,756.2	3.506	SF
AD-J EVANS C4-20-24 - ORIGINAL WELLBORE - PROP	1,100.0	1,099.0	167.6	160.1	22.443	CC, ES
AD-J EVANS C4-20-24 - ORIGINAL WELLBORE - PROP	19,719.6	19,934.8	1,801.0	1,102.3	2.578	SF
AD-LIBRARY 1-20-24 - ORIGINAL WELLBORE - PROP	200.0	200.0	120.2	119.2	118.117	CC, ES
AD-LIBRARY 1-20-24 - ORIGINAL WELLBORE - PROP	19,719.6	19,845.8	990.9	287.7	1.409	Level 3, SF
AD-LIBRARY 2-20-24 - ORIGINAL WELLBORE - PROP	100.0	100.0	145.7	145.4	484.015	CC, ES
AD-LIBRARY 2-20-24 - ORIGINAL WELLBORE - PROP	19,719.6	19,903.3	1,347.9	644.9	1.917	SF
EXIST DD ADOLF F21-25D - Wellbore #1 - Wellbore #1	773.9	768.9	1,023.8	1,019.8	253.128	CC
EXIST DD ADOLF F21-25D - Wellbore #1 - Wellbore #1	900.0	885.9	1,024.4	1,019.6	215.807	ES
EXIST DD ADOLF F21-25D - Wellbore #1 - Wellbore #1	6,650.0	6,672.2	1,389.1	1,348.0	33.819	SF
EXIST VERT ADOLF F 21-14 - Wellbore #1 - Design #1	6,410.7	6,345.3	2,143.7	1,991.8	14.113	CC
EXIST VERT ADOLF F 21-14 - Wellbore #1 - Design #1	6,550.0	6,482.7	2,144.0	1,988.8	13.808	ES
EXIST VERT ADOLF F 21-14 - Wellbore #1 - Design #1	6,750.0	6,672.6	2,182.6	2,022.5	13.636	SF
EXIST VERT BRAGG 1 - Wellbore #1 - Design #1	2,144.0	2,124.0	1,836.0	1,786.4	37.034	CC

CC - Min centre to center distance or convergent point, SF - min separation factor, ES - min ellipse separation

Anticollision Report

Company:	EXTRACTION OIL & GAS	Local Co-ordinate Reference:	Well AD-DAIRY 3-20-24
Project:	Weld County	TVD Reference:	KB-EST @ 4655.0usft (Original Well Elev)
Reference Site:	Sec 21-T5N-R65W	MD Reference:	KB-EST @ 4655.0usft (Original Well Elev)
Site Error:	0.0 usft	North Reference:	True
Reference Well:	AD-DAIRY 3-20-24	Survey Calculation Method:	Minimum Curvature
Well Error:	0.0 usft	Output errors are at	2.00 sigma
Reference Wellbore	ORIGINAL WELLBORE	Database:	EDT_32Bit_ODBC
Reference Design:	PROPOSAL #1	Offset TVD Reference:	Offset Datum

Summary

Site Name	Reference Measured Depth (usft)	Offset Measured Depth (usft)	Distance Between Centres (usft)	Distance Between Ellipses (usft)	Separation Factor	Warning
Offset Well - Wellbore - Design						
Sec 21-T5N-R65W						
EXIST VERT BRAGG 1 - Wellbore #1 - Design #1	2,200.0	2,180.0	1,836.5	1,785.6	36.086	ES
EXIST VERT BRAGG 1 - Wellbore #1 - Design #1	7,000.0	6,857.8	2,615.7	2,453.5	16.122	SF
EXIST VERT BRAGG PM F 21-11 - Wellbore #1 - Design	2,144.0	2,132.0	1,263.4	1,213.4	25.244	CC
EXIST VERT BRAGG PM F 21-11 - Wellbore #1 - Design	2,400.0	2,387.7	1,265.8	1,209.8	22.591	ES
EXIST VERT BRAGG PM F 21-11 - Wellbore #1 - Design	6,600.0	6,530.7	1,568.3	1,412.4	10.059	SF
EXIST VERT ERICKSON 21-13 - Wellbore #1 - Design #	6,558.8	6,509.7	680.3	524.5	4.368	CC, ES
EXIST VERT ERICKSON 21-13 - Wellbore #1 - Design #	6,650.0	6,578.9	686.6	529.0	4.356	SF
EXIST VERT SCHNEIDER 1 - Wellbore #1 - Wellbore #1	2,165.2	2,172.2	1,207.4	1,199.0	143.373	CC, ES
EXIST VERT SCHNEIDER 1 - Wellbore #1 - Wellbore #1	6,700.0	6,633.9	1,842.7	1,817.1	71.999	SF
EXIST VERT SCHNEIDER 22-21 - Wellbore #1 - Design	2,144.0	2,132.0	1,885.7	1,836.1	37.975	CC
EXIST VERT SCHNEIDER 22-21 - Wellbore #1 - Design	2,200.0	2,188.0	1,886.2	1,835.2	37.003	ES
EXIST VERT SCHNEIDER 22-21 - Wellbore #1 - Design	6,700.0	6,626.0	2,553.3	2,396.8	16.319	SF
EXIST VERT WASS 5 - Wellbore #1 - Design #1	18,479.2	7,069.0	2,204.4	1,746.6	4.816	CC
EXIST VERT WASS 5 - Wellbore #1 - Design #1	18,500.0	7,069.0	2,204.5	1,746.1	4.809	ES
EXIST VERT WASS 5 - Wellbore #1 - Design #1	18,700.0	7,069.0	2,215.4	1,752.5	4.786	SF
EXIST VERT WASS 6 - Wellbore #1 - Design #1	18,151.9	7,069.0	3,512.1	3,063.2	7.824	CC
EXIST VERT WASS 6 - Wellbore #1 - Design #1	18,200.0	7,069.0	3,512.4	3,062.2	7.801	ES
EXIST VERT WASS 6 - Wellbore #1 - Design #1	18,600.0	7,069.0	3,540.6	3,081.1	7.706	SF
SW NE SEC. 26 T5N R66W 6th P.M.						
ABDN VERT DUELL #1 - Wellbore #1 - Design #1	19,516.5	7,102.0	691.7	203.6	1.417	Level 3, CC, ES, SF
ABDN VERT HORII #1 - Wellbore #1 - Design #1	19,719.6	7,154.0	1,375.4	1,058.3	4.337	CC, ES, SF
ABDN VERT HORII #2 - Wellbore #1 - Design #1	19,719.6	7,143.0	1,344.6	1,030.8	4.285	CC, ES, SF
ABDN VERT RKW #1 - Wellbore #1 - Design #1	19,552.4	7,146.0	1,920.0	1,430.4	3.922	CC
ABDN VERT RKW #1 - Wellbore #1 - Design #1	19,600.0	7,146.0	1,920.6	1,430.0	3.915	ES
ABDN VERT RKW #1 - Wellbore #1 - Design #1	19,700.0	7,146.0	1,925.7	1,433.7	3.914	SF
EXIST DD SEGL #17-24 - Wellbore #1 - Wellbore #1	19,039.8	19,039.8	2,707.2	2,332.4	7.223	CC
EXIST DD SEGL #17-24 - Wellbore #1 - Wellbore #1	19,100.0	19,100.0	2,707.9	2,332.0	7.204	ES
EXIST DD SEGL #17-24 - Wellbore #1 - Wellbore #1	19,200.0	19,200.0	2,712.0	2,334.6	7.186	SF
EXIST DD SEGL #18-24 - Wellbore #1 - Wellbore #1	19,719.6	7,324.2	3,196.7	2,889.6	10.410	CC, ES, SF
EXIST DD SEGL #21-24X - Wellbore #1 - Wellbore #1	19,719.6	7,495.2	2,647.5	2,268.4	6.984	CC, ES, SF
EXIST DD SEGL #22-24 - Wellbore #1 - Wellbore #1	19,719.6	7,219.4	2,183.0	1,969.7	10.232	CC, ES, SF
EXIST DD SEGL #2-24 - Wellbore #1 - Wellbore #1	19,636.8	7,508.2	3,433.8	3,060.7	9.204	CC
EXIST DD SEGL #2-24 - Wellbore #1 - Wellbore #1	19,700.0	7,508.4	3,434.4	3,060.1	9.176	ES
EXIST DD SEGL #2-24 - Wellbore #1 - Wellbore #1	19,719.6	7,508.5	3,434.8	3,060.2	9.169	SF
EXIST DD SEGL #3-24 - Wellbore #1 - Wellbore #1	19,719.6	7,602.6	3,559.8	3,203.3	9.987	CC, ES, SF
EXIST DD SEGL #4-24 - Wellbore #1 - Wellbore #1	19,719.6	7,758.4	4,226.2	3,922.7	13.921	CC, ES, SF
EXIST DD SEGL #7-24 - Wellbore #1 - Wellbore #1	19,380.4	7,369.6	1,986.3	1,617.7	5.389	CC
EXIST DD SEGL #7-24 - Wellbore #1 - Wellbore #1	19,400.0	7,369.7	1,986.4	1,617.4	5.383	ES
EXIST DD SEGL #7-24 - Wellbore #1 - Wellbore #1	19,500.0	7,370.4	1,989.9	1,619.4	5.371	SF
EXIST VERT ANDERSON-COOMBS #2 - Wellbore #1 -	19,719.6	7,100.0	3,518.3	3,186.9	10.617	CC, ES, SF
EXIST VERT ANDERSON-COOMBS #3 - Wellbore #1 -	19,719.6	7,139.0	2,302.2	1,853.5	5.131	CC, ES, SF
EXIST VERT DUELL #2 - Wellbore #1 - Design #1	19,509.8	7,125.0	628.6	140.4	1.288	Level 3, CC, ES, SF
EXIST VERT SEGL #1 - Wellbore #1 - Design #1	19,719.6	7,163.0	2,224.6	1,782.6	5.033	CC, ES, SF
EXIST VERT WASS #2 - Wellbore #1 - Design #1	19,472.0	7,105.0	3,334.4	2,847.4	6.847	CC
EXIST VERT WASS #2 - Wellbore #1 - Design #1	19,600.0	7,105.0	3,336.8	2,846.3	6.803	ES
EXIST VERT WASS #2 - Wellbore #1 - Design #1	19,719.6	7,105.0	3,343.5	2,850.2	6.777	SF
EXIST VERT WASS #4 - Wellbore #1 - Design #1	19,472.8	7,101.3	2,062.9	1,575.9	4.236	CC
EXIST VERT WASS #4 - Wellbore #1 - Design #1	19,500.0	7,101.3	2,063.1	1,575.3	4.229	ES
EXIST VERT WASS #4 - Wellbore #1 - Design #1	19,600.0	7,101.3	2,066.8	1,576.5	4.216	SF

CC - Min centre to center distance or convergent point, SF - min separation factor, ES - min ellipse separation